



SCN15 & SC156 Shown

Sustaining Capacity .....▶ 12 - 24 tons  
 Thread Pitch Range.....▶ 1.5 - 3 in.  
 Weight Range.....▶ 5.5 - 29.25 lbs.

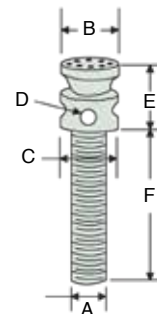
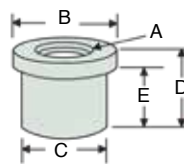
- ▶ Holds the load indefinitely without creep down.
- ▶ The shoulder nut is placed into piping or other fixed form, and the screw & cap assembly is threaded through it.

### RECOMMENDED LEVER BARS

Please refer to page 148 for additional details.

\* Lever Bars Sold Separately

Screw Jack Model	Lever Bar Model
<i>SJ156</i>	SLB24
<i>SJ158</i>	SLB24
<i>SJ1512</i>	SLB24
<i>SJ208</i>	SLB35
<i>SJ2010</i>	SLB35
<i>SJ2012</i>	SLB35
<i>SJ258</i>	SLB42
<i>SJ2512</i>	SLB42
<i>SJ2518</i>	SLB42



Model	Sustaining Capacity (tons)	Dimensions (in)						Weight (lbs)
		A	B	C	D	E	F	
		Modified Acme Thread Diameter - Pitch A (Thread)	Width	Diameter	Height			
<i>SC156</i>	12	1.5 - 3	2.87	2.25	.87	3.75	5.68	5.5
<i>SC158</i>		1.5 - 3	2.87	2.25	.87	3.75	7.68	6.25
<i>SC1512</i>		1.5 - 3	2.87	2.25	.87	3.75	11.68	7.75
<i>SC208</i>	20	2 - 2.5	3.13	2.87	.93	4	7.56	10.5
<i>SC2010</i>		2 - 2.5	3.13	2.87	.93	4	9.56	12
<i>SC2012</i>		2 - 2.5	3.13	2.87	.93	4	11.56	13.5
<i>SC258</i>	24	2.5 - 2.5	3.25	3.25	1.81	5	7.81	16.75
<i>SC2512</i>		2.5 - 2.5	3.25	3.25	1.81	5	11.86	21.75
<i>SC2518</i>		2.5 - 2.5	3.25	3.25	1.81	5	17.81	29.25
<b>Shoulder Nuts</b>								
<i>SCN15</i>	---	1.5 - 3	3	2.41	3	2.25	---	3.25
<i>SCN20</i>	---	2 - 2.5	4	3	3.25	2.25	---	5
<i>SCN25</i>	---	2.5 - 2.5	5	3.93	4	3	---	11

Mechanical Jacks