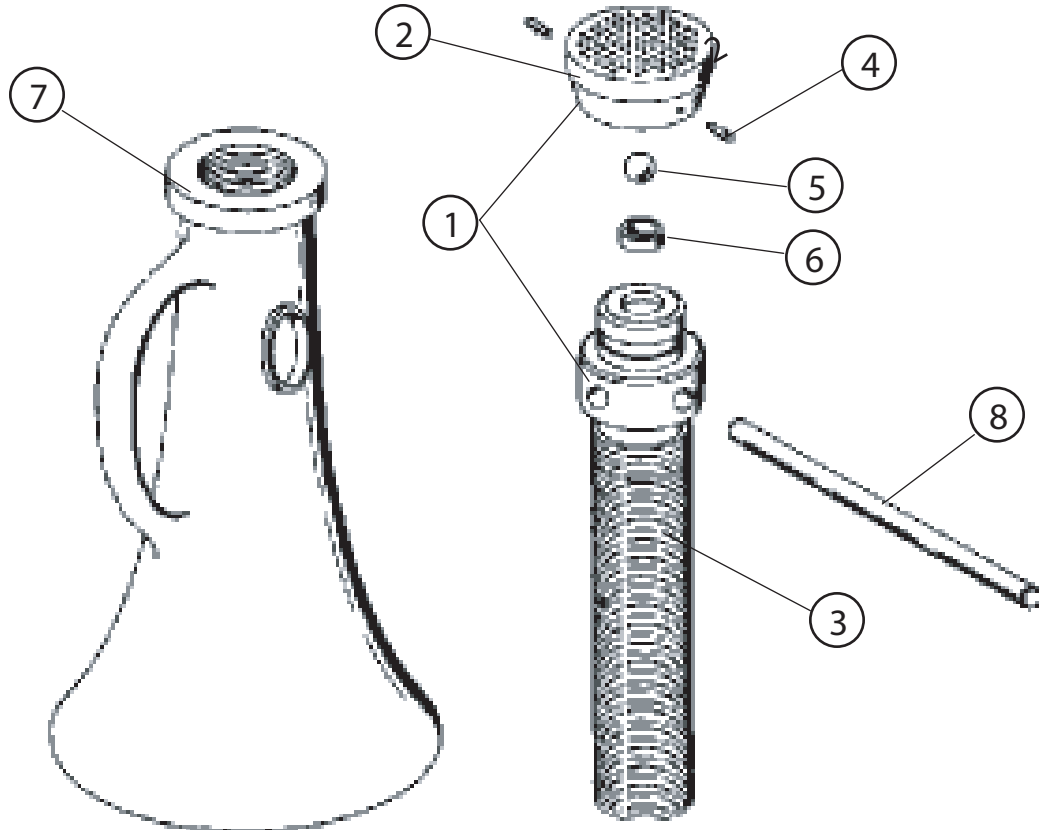




WWW.TKSIMPLEX.COM

TECHNICAL REPAIR PART SHEET  
All SJ Series Models  
SJ SERIES SCREW JACK

PART SHEET NUMBER	REVISION NUMBER/LETTER	DATE CODE RANGE	DOCUMENT DATE
54100	E	N/A	03/13



ITEM	DESCRIPTION	MODEL AND PRODUCT ITEM NUMBERS									QTY
		SJ156	SJ158	SJ1512	SJ208	SJ2010	SJ2012	SJ258	SJ2512	SJ2518	
1	CAP & SCREW ASSEMBLY	SC156	SC158	SC1512	SC208	SC2010	SC2012	SC258	SC2512	SC2518	1
2	CAP	*	*	*	*	*	*	*	*	*	1
3	SCREW	90016	90019	90025	90036	90039	90043	90056	90059	90068	1
4	SPIRAL PIN	*	*	*	*	*	*	*	*	*	3
5	BALL BEARING	*	*	*	*	*	*	*	*	*	1
6	THRUST WASHER	*	*	*	*	*	*	*	*	*	1
7	HOUSING	N/A	N/A	N/A	N/A	N/A	N/A	N/A	N/A	N/A	1
<b>LEVER BAR ACCESSORY</b>											
8	ROUND LEVER BAR	SLB24			SLB35			SLB42			1
*	CAP KIT COMPONENTS	RK1.501			RK2.001			RK2.501			1

**NOTE: HOUSINGS ARE NOT AVAILABLE AS SERVICABLE ITEMS.**



To maintain your warranty:  
Have your products inspected and repaired by a SIMPLEX Authorized Service Center.  
Visit [www.tksimplex.com](http://www.tksimplex.com) to locate the nearest one.



**WARRANTY STATEMENT**

Simplex products are warranted to be free of defects in materials and workmanship under normal use for as long as they are owned by the original purchaser, subject to the exclusions and limitations listed. This warranty does not cover ordinary normal wear & tear, abuse, overloading, alterations, (including repairs or attempted repairs by parties other than SIMPLEX or its Authorized Service Centers), improper fluid, or use in a manner for which they are not intended or use which is contrary to instructions for the products. If the customer believes a product is defective, the product must be delivered, or shipped freight prepaid, to the nearest SIMPLEX Authorized Service Center.