

Specifications

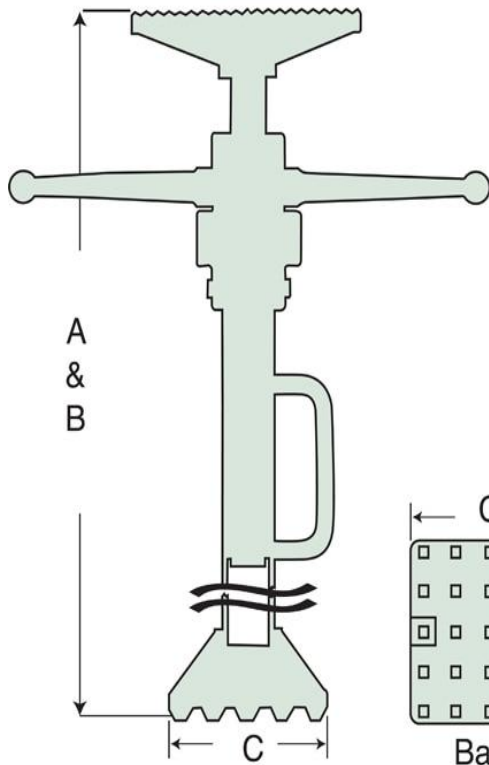
Units: **Imperial** Metric

Capacity (imperial tons)	4
Stroke (in)	38
Power Source	Mechanical
Head Type	S Type Head - 36 square inches in support area.
Head Length (in)	9
Head Width (in)	4
Weight (lbs)	42

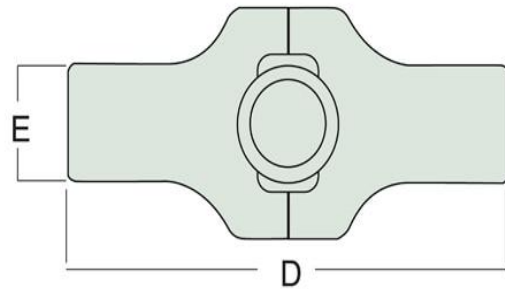
Dimensions

Units: **Imperial** Metric

Collapsed Height (in)	75
Extended Height (in)	113
Dimension A (in)	75
Dimension B (in)	113
Dimension C (in)	7.38
Dimension D (in)	9
Dimension E (in)	4
Base Length (in)	7.38



E & F Style Head



S Style Head

