

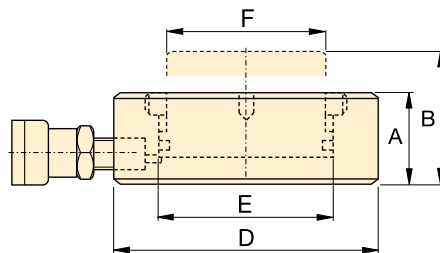
# CULP-Series, Ultra-Flat Cylinders with Stop-Ring **ENERPAC**

## ▼ CULP50 Ultra-Flat Cylinder, with Stop-Ring



- Up to 4% side load of maximum capacity
- Stop-ring for maximum stroke limitation
- Extremely low collapsed height
- Nitrocarburized surface treatment for harsh conditions

▼ The Ultra-Flat cylinders are designed for applications where high lifting forces are required in confined spaces starting at 1.10 inch (CUSP200 is shown).



## CULP Series



Capacity:

**10 - 100 tons**

Stroke:

**0.24 inches**

Maximum Operating Pressure:

**10,150 psi**

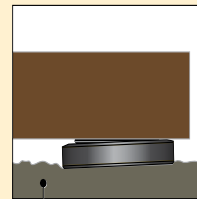


### IMPORTANT!

All Ultra-Flat Cylinders require a solid lifting surface for correct support.

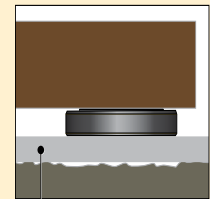
The use of these flat cylinders on surfaces such as sand, mud or dirt, may result in cylinder damage.

 **INCORRECT!**



Rough soil

 **CORRECT!**



Flat lifting surface

For more safety instructions see our Yellow Pages.

### Hoses

Enerpac offers a complete line of high-quality hydraulic hoses. To ensure the integrity of your system, specify only genuine Enerpac hydraulic hoses.

Page: **148**

Cylinder Capacity @ 10,150 psi ton (max.)	Stroke (in)	Model Number	Cylinder Effective Area (in <sup>2</sup> )	Oil Capacity (in <sup>3</sup> )	Collapsed Height A (in)	Extended Height B (in)	Outside Diameter D (in)	Cylinder Bore Diameter E (in)	Plunger Diameter F (in)	Weight (lbs)
10 (10.9)	0.24	<b>CULP10</b> <sup>1)</sup>	2.15	0.51	1.08	1.32	2.83	1.65	1.49	2
20 (22.2)	0.24	<b>CULP20</b> <sup>1)</sup>	4.38	1.04	1.26	1.50	3.54	2.36	2.16	4
30 (34.8)	0.24	<b>CULP30</b> <sup>1)</sup>	6.85	1.62	1.38	1.61	4.13	2.95	2.64	6
50 (61.8)	0.24	<b>CULP50</b> <sup>1)</sup>	12.17	2.88	1.75	1.99	5.51	3.94	3.54	11.9
100 (121.1)	0.24	<b>CULP100</b> <sup>2)</sup>	23.85	5.63	2.55	2.79	7.67	5.51	4.92	25.3

<sup>1)</sup> Coupler AR630 including dustcap: Use HB7206 hose including AH630 coupler to connect to your pump.

<sup>2)</sup> Coupler CR400 including dustcap: Use HC-Series hose including CH604 coupler to connect to your pump.