



777 Oakmont Lane, Westmont, IL 60559
1.800.323.9114 • Outside U.S. 1-630-590-6990
www.tksimplex.com

G5 SERIES TORQUE POWER PUMP

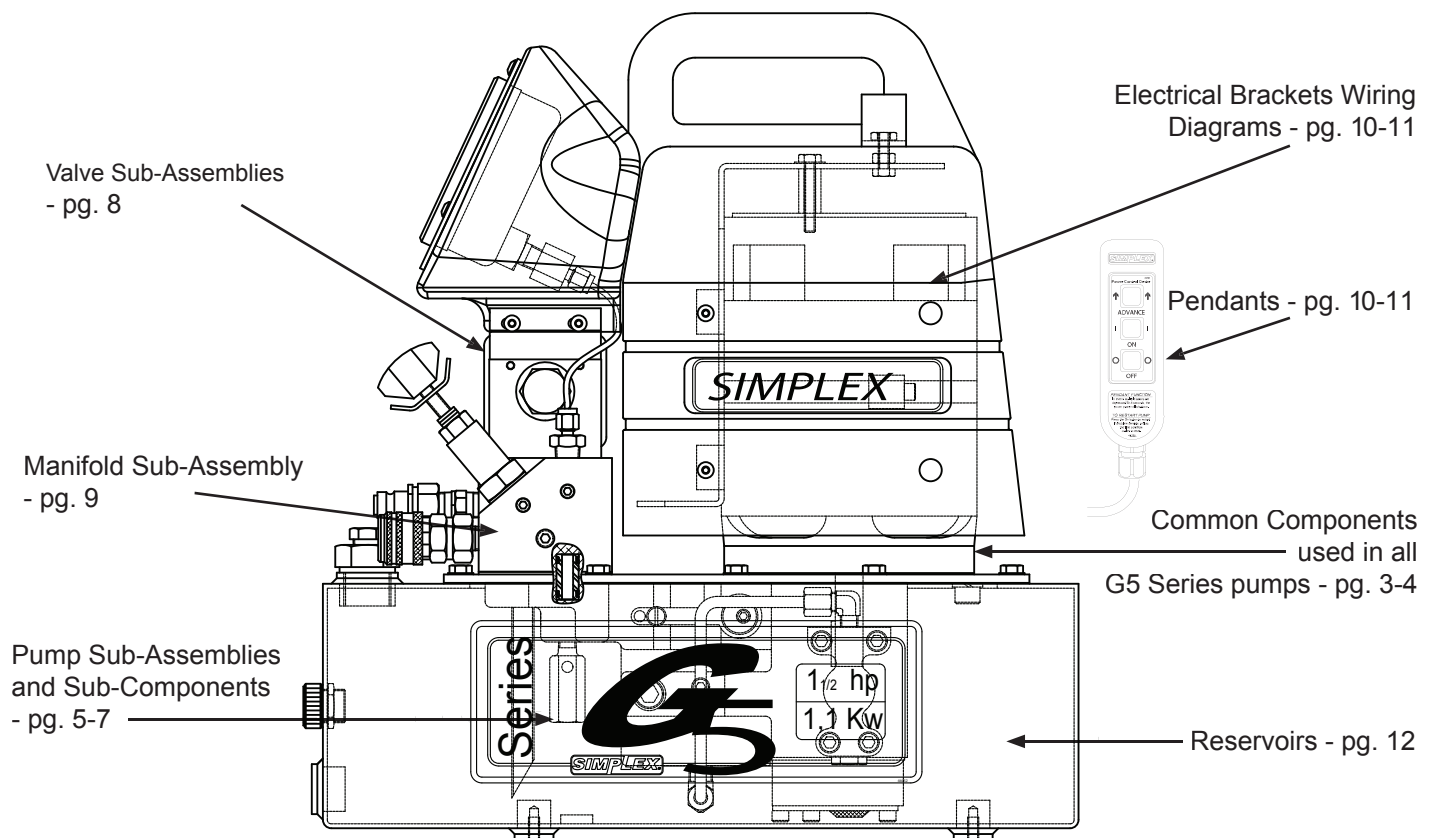
PARTS IDENTIFICATION MANUAL

Reference # - TD058

Rev. - D

Date - 1/14

This illustration is for reference purposes only. The appearance of your unit may differ from the unit shown.



G5 Torque Wrench Power Pump

How to Identify Parts for Your Model.

MODEL MATRIX

Understanding our model number configurations:

	PUMP CLASS		PUMP TYPE			OPTION 1	OPTION 2	OPTION 3
Sample Model #:	G	5	1	7	3	T	Z	R
Description:	Model	Performance Series	Power Consumption	Valve Function	Reservoir Size	Options		
	G = Gen II Pump	5 = 1.5 HP	1 = 115 VAC 2 = 230 VAC	7 = Torque Wrench	1 = 1 Gal 2 = 1.5 Gal 3 = 2.5 Gal	T = Torque Wrench A = Auto Cycle C = Caster Wheel Kit H = Heat Exchanger R = Roll Cage Z = Multi-port (torque)		

MODEL NUMBER & DATE CODE LOCATION

For Example, the date code and serial number

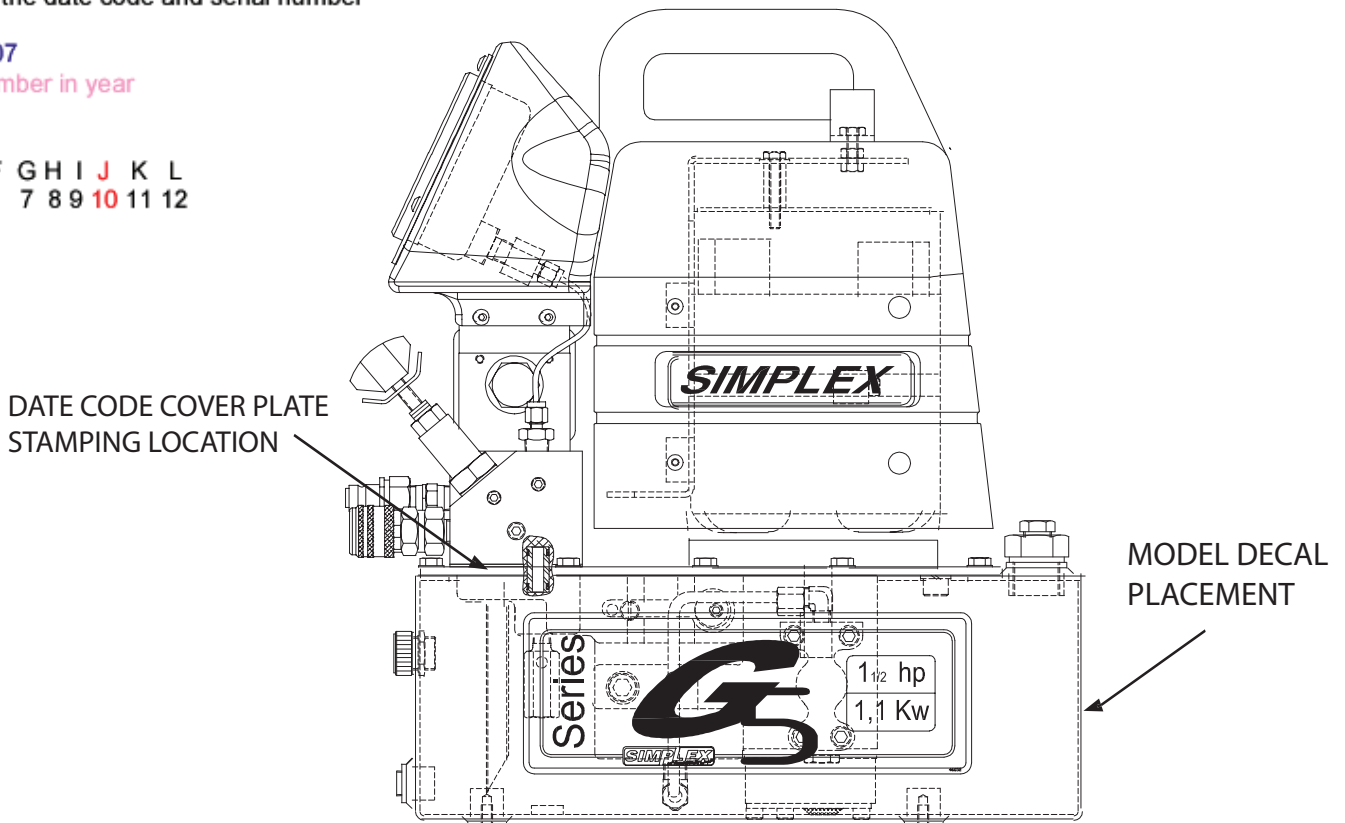
J= **October**

07 = **Year 2007**

42= **Week number in year**

J 07 42

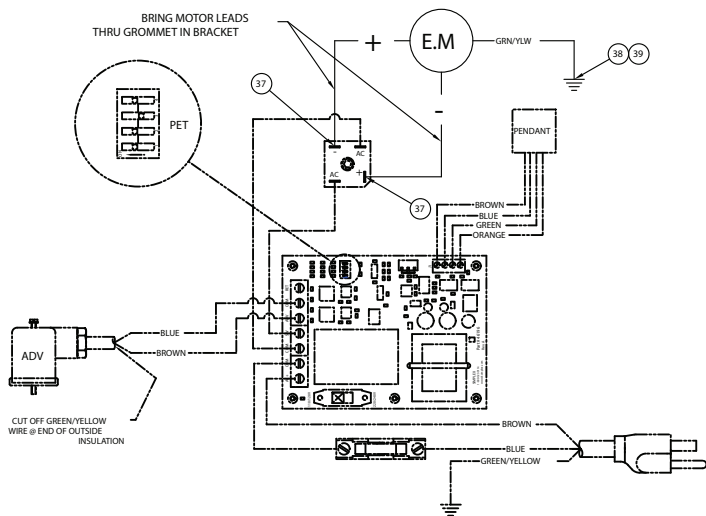
A B C D E F G H I **J** K L
1 2 3 4 5 6 7 8 9 **10** 11 12



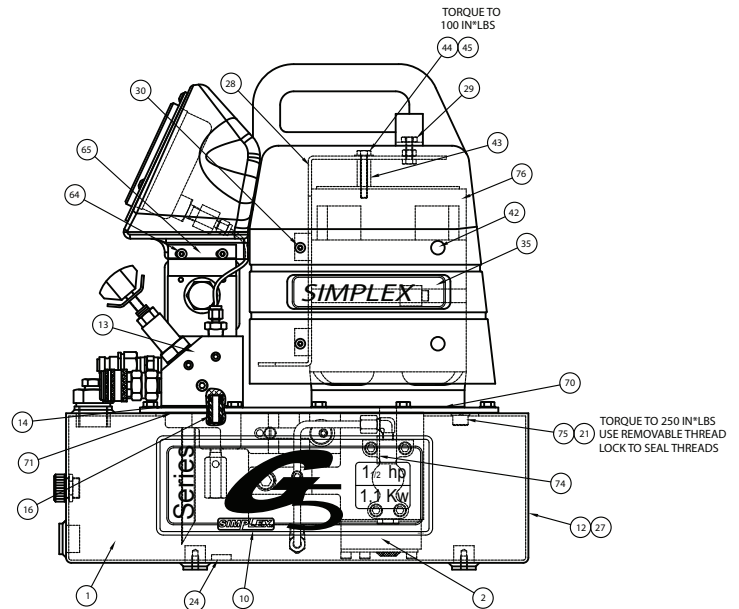
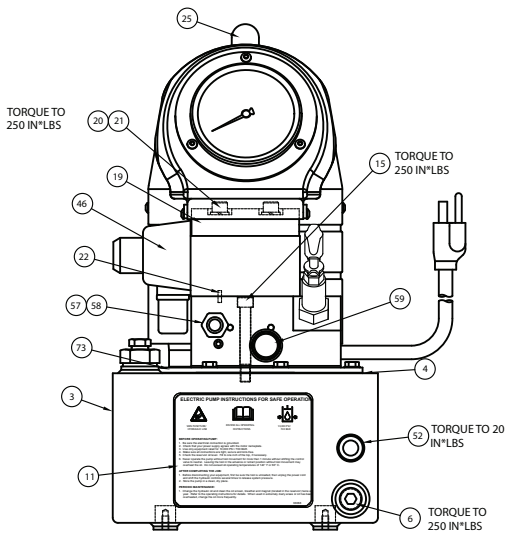
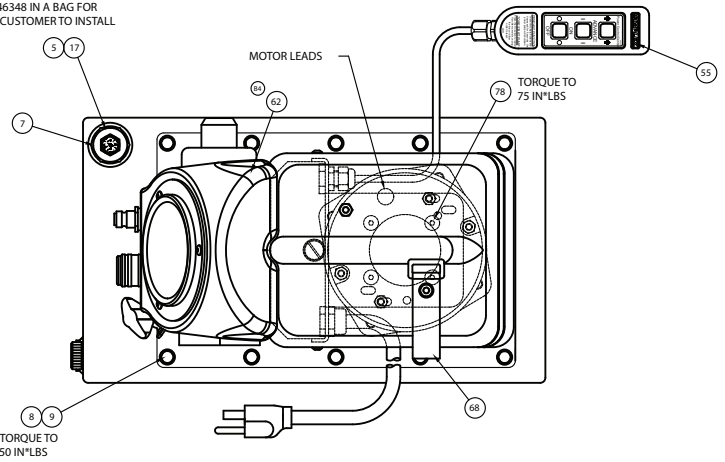
G5 Series Electric Power Pump

Common components used in pumps

NOTE: This illustration is for reference only. The appearance of your unit may differ from unit shown.



INSTALL SHIPPING PLUG 87145 AND SHIP BREATHER VENT 46348 IN A BAG FOR CUSTOMER TO INSTALL



G5 Torque Wrench Power Pump

Common components used in pumps

ITEM #	DESCRIPTION	115V	230V	QTY.
02	PUMP ASM.	SEE PAGE 5-7		1.00
03	RESERVOIR	SEE PAGE 12		1.00
04	RESERVOIR GASKET	*		1.00
05	BREATHER VENT 3/8" NPT	46348	46348	1.00
06	PIPE PLUG 1/2"	46697	46697	1.00
07	SAE #12 HEX PLUG WITH PT	46118	46118	1.00
08	HHCS 1/4-20 X .75 PLT	65891	65891	14.00
09	SEALING WASHER	65892	65892	14.00
10	G5 RESERVOIR DECAL	46052	46052	2.00
11	LABEL SAFE USE ELEC	68068	68068	1.00
12	BLANK DECAL 3 X 4	87305	87305	1.00
13	MANIFOLD ASM.	SEE PAGE 9		1.00
14	VALVE GASKET	69242	69242	1.00
15	SHCS 3/8-16 X 2 3/4	99921	99921	3.00
16	ADAPTER ASSY.	68963	68963	1.00
17	HEX PIPE PLUG 3/8" W/ COATING	46513	46513	1.00
19	VALVE ASM. 2P/4W	SEE PAGE 8		1.00
20	SHCS 3/8-16 X 3 1/2	88363	88363	4.00
21	LOCK WASHER 3/8	93943	93943	6.00
22	ROLL PIN 1/8 X 3/8 LG	561604	561604	1.00
24	MAGNET	66021	66021	1.00
25	MOTOR SHROUD W/ HANDLE	45534	45534	1.00
27	DECAL OVERLAY	46539	46539	1.00
28	BRACKET ASM	SEE PAGE 10-11		1.00

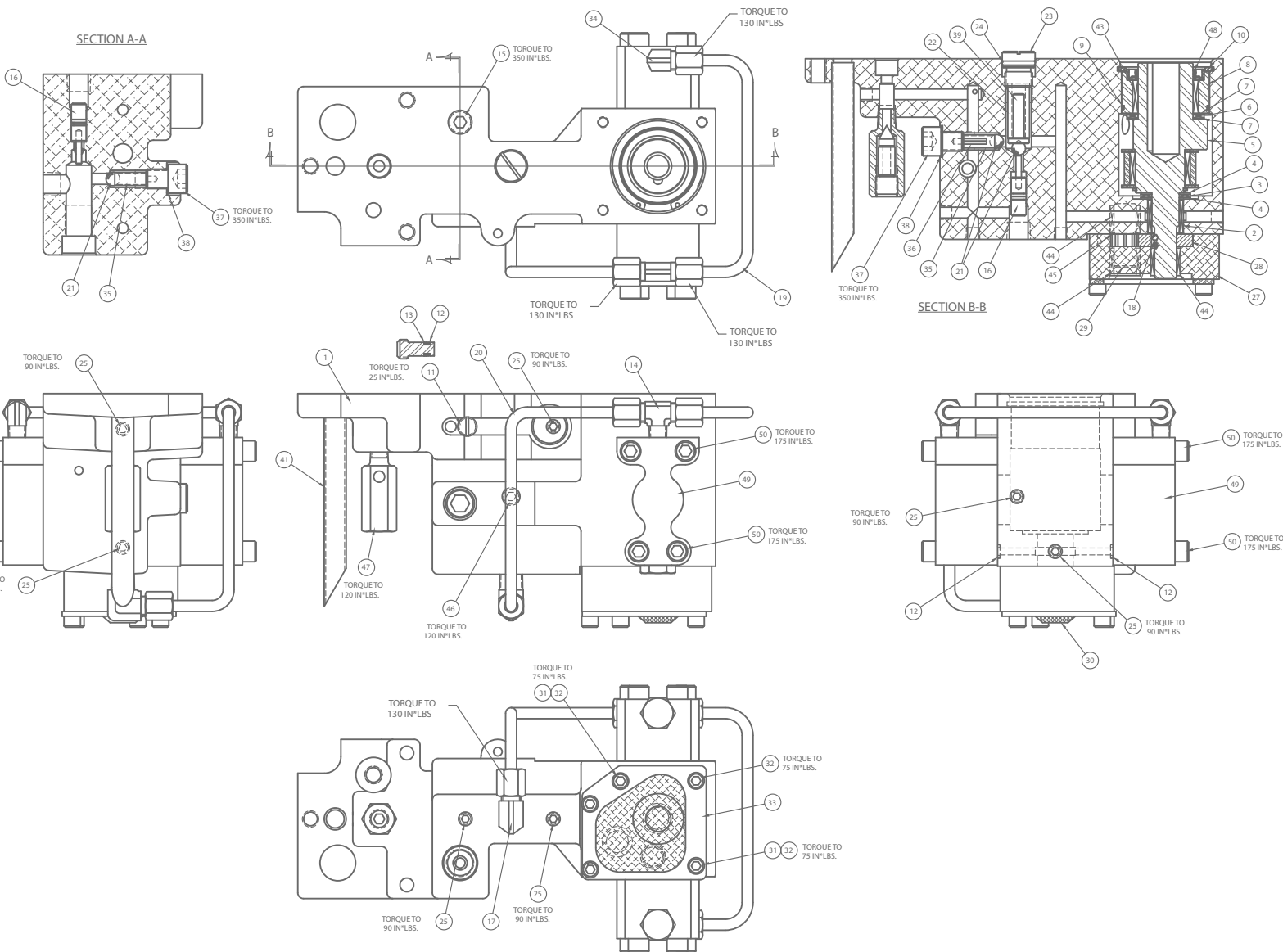
ITEM #	DESCRIPTION	115V	230V	QTY.
29	HEAVY HEX JAM NUT 1/4-20	69234	69234	2.00
30	BHCS 10-24 x 3/8 LG	69236	69236	4.00
35	SIMPLEX DECAL 5.71" x 1.15"	46355	46355	2.00
37	QUICK DISCON. FLAG BLUE	44491	44491	2.00
38	RING TERMINAL 1/4"	69717	69717	1.00
39	SHCS 10-32 X 1/4"	45175	45175	1.00
42	HOLE PLUG 1/4"	46405	46405	4.00
43	SPACER 1"	69353	69759	2.00
44	HHCS 1/4-20 X 1.50	84417	87260	2.00
45	WASHER 1/4" SS	88429	88429	2.00
46	COIL WITH DIN CONNECTOR	46294	46324	1.00
52	SIGHT GAUGE	46009	46009	1.00
57	1/4 IN NIPPLE	4100067	4100067	1.00
58	1/4" NIPPLE	CT210	CT210	1.00
59	1/4" SELF-LOCKING COUPLER	45765	45765	1.00
62	GAUGE SHROUD ASSEMBLY	46474	46474	1.00
64	BHCS 10-24 x .50	44559	44559	4.00
65	GAUGE SHROUD MNT PLATE'	46588	46588	2.00
68	VELCRO STRAP 1x14	46310	46310	1.00
70	GASKET-MOTOR	*		1.00
71	PUMP GASKET G5	*		1.00
73	COVER PLATE	SEE PAGE 12		1.00
74	PIN,DOWEL 3/16 1" LONG	69026	69026	1.00
75	SHCS 3/8-16 X 1	93594	93594	2.00
76	1 1/2HP, PM MOTOR	68376	68403	1.00
78	FHCS 1/4-28 x 0.50 LONG	46279	46279	4.00

G 5 REBUILD KIT (* = COMPONENTS) -- PART # 54488

G5 Series Electric Power Pump

Pump Assembly

PART # 46335SS (PUMP ASM G5)



G5 Series Electric Power Pump

Pump Assembly

PART # 46335SS (PUMP ASM G5)

ITEM #	DESCRIPTION	PART #	QTY
1	PUMP BODY G5	45750	1
2	BEARING ROLLER 5/8x13/16x5/8 WIDE	68360	1
3	THRUST BEARING	66033	1
4	THRUST WASHER	66474	2
5	ECCENTRIC SHAFT ASM 5/8" G5	PAGE 7	1
6	THRUST BEARING	66106	1
7	THRUST WASHER	66108	2
8	ECCENTRIC SHAFT ADAPTER G5	45908	1
9	O-RING 1 3/4 X 1 7/8	*	1
10	RETAINING RING	68978	1
11	POW'R BUD DUMP PLUG	43283	1
12	O-RING 3/16X5/16	*	3
13	BACKUP WASHER	56080087	1
14	MALE TEE 1/8" PIPE TO 1/4" TUBE	45426	1
15	PIPE PLUG 1/4" FLUSH W/ COATING	46509	1
16	UNLOADING PISTON ASSEMBLY	PAGE 7	2
17	MALE ELBOW 1/4" TUBE 1/4" PIPE	45929	1
18	BALL 1/8"	90906	2
19	G5 PISTON BLOCK TUBE	46548	1
20	OUTLET TUBE PISTON BLOCK	45815	1
21	BALL 5/16"	91701	3
22	UNLOADING SPRING	43671	1
23	ADJUSTING SCREW G5	45903	1
24	O-RING 5/8X3/4 URETH	*	1
25	PIPE PLUG FLUSH 1/16 W/ COATING	40049	7
27	BOTTOM PLATE	45900	1
28	GEAR SET 9/33"	45823S	1
29	SHAFT-IDLER	68850	1
30	SCREEN	*	1
31	TUBE-GUIDE .11	68894	2
32	SHCS 1/4-28 X 1 3/4	68255	5
33	PLATE-SCREEN MTG.	68927	1
34	MALE ELBOW 1/8 PIPE	69354	1
35	SPRING	68225	2
36	ROLL PIN 1/8 X 3/4 LONG	97782	1
37	BALL STOP G5	45904	2
38	GASKET 29/64 X 5/8	*	2
39	SPRING CAP UNLOADING VALVE	43673	1
41	TUBE RETURN	68569	1
43	BEARING ROLLER 1 1/4x1 1/2x3/4 WIDE	66030	1
44	BEARING ROLLER 1/2x11/16x1/2 WIDE	68891	3
45	RING-RETAINING	68892	1
46	PIPE PLUG 1/8" FLUSH W/ COATING	46508	1
47	CART REL. VAL. ASSEMBLY	66220SS	1
48	SHAFT SEAL G5	*	1
49	PISTON BLOCK ASM. G-SERIES 0.255"	PAGE 7	2
50	SHCS 5/16-24 X 1.75	69392	8

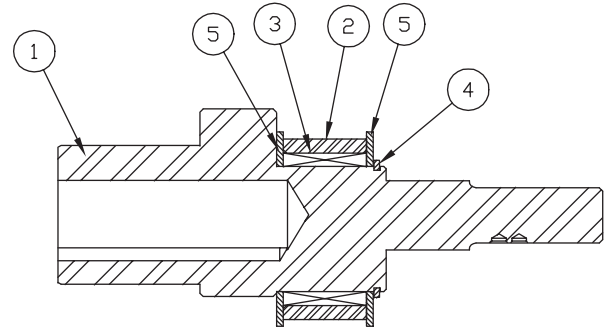
* = G5 REBUILD KIT PART # 54488

G5 Series Electric Power Pump

Pump Sub Assembly

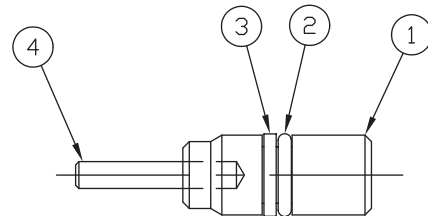
PART #45820SS (ECCENTRIC SHAFT ASM.)

ITEM #	DESCRIPTION	PART #	QTY.
01	ECCENTRIC SHAFT 5/8"	45819	1.00
02	ECCENTRIC RING	45907	1.00
03	ROLL BEARING 1 1/8x1 3/8x3/4 WIDE	45926	1.00
04	RETAINING RING EXTERNAL 1 1/8"	45931	1.00
05	THRUST WASHER	68026C	2.00



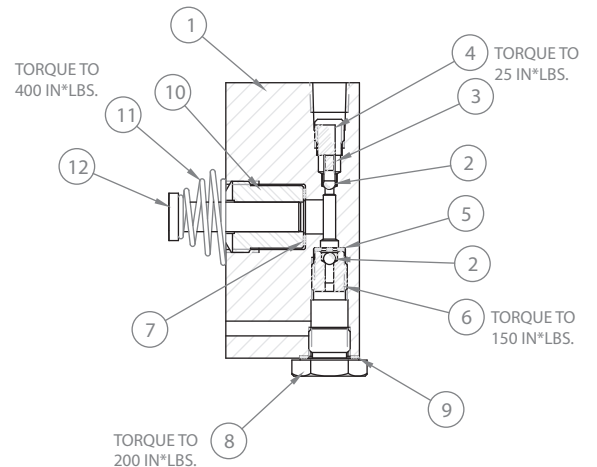
PART# 43766SS (UNLOADING PISTON ASM.)

ITEM #	DESCRIPTION	PART #	QTY.
01	UNLOAD PISTON	43765	1.00
02	O RING 1/4X3/8	5602009	1.00
03	BACK-UP WASHER TEF	43768	1.00
04	DOWEL PIN 1/8X3/4 LG	43686	1.00



PART# 46336SS (PISTON BLK ASM.)

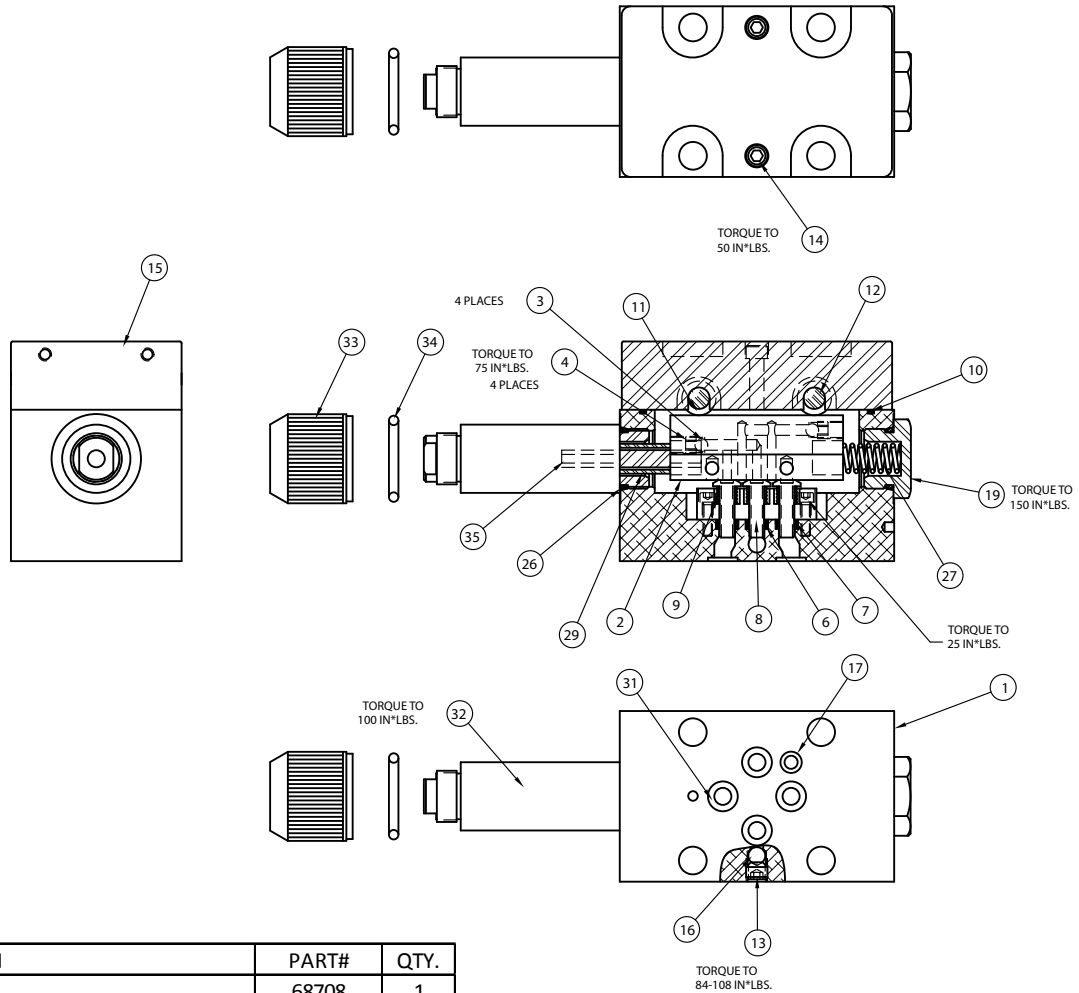
ITEM #	DESCRIPTION	PART #	QTY
1	PISTON BLOCK	45539	1
2	BALL 1/8"	90906	2
3	SPRING	66042	1
4	BALL STOP	68810	1
5	BALL RETAINER	66043	1
6	INTAKE SEAT	66046	1
7	GASKET 25/64X19/32	85726	1
8	PLUG PISTON BLOCK	68825	1
9	GASKET 29/64 X 5/8	86269	1
10	ADAPTOR .255 DIA.	68909	1
11	SPRING, PISTON	68340	1
12	PISTON .255 DIA.	68222	1



G5 Series Electric Power Pump

Valve Sub Assemblies

(46291SS) SOLENOID VALVE 115V. / 230V.



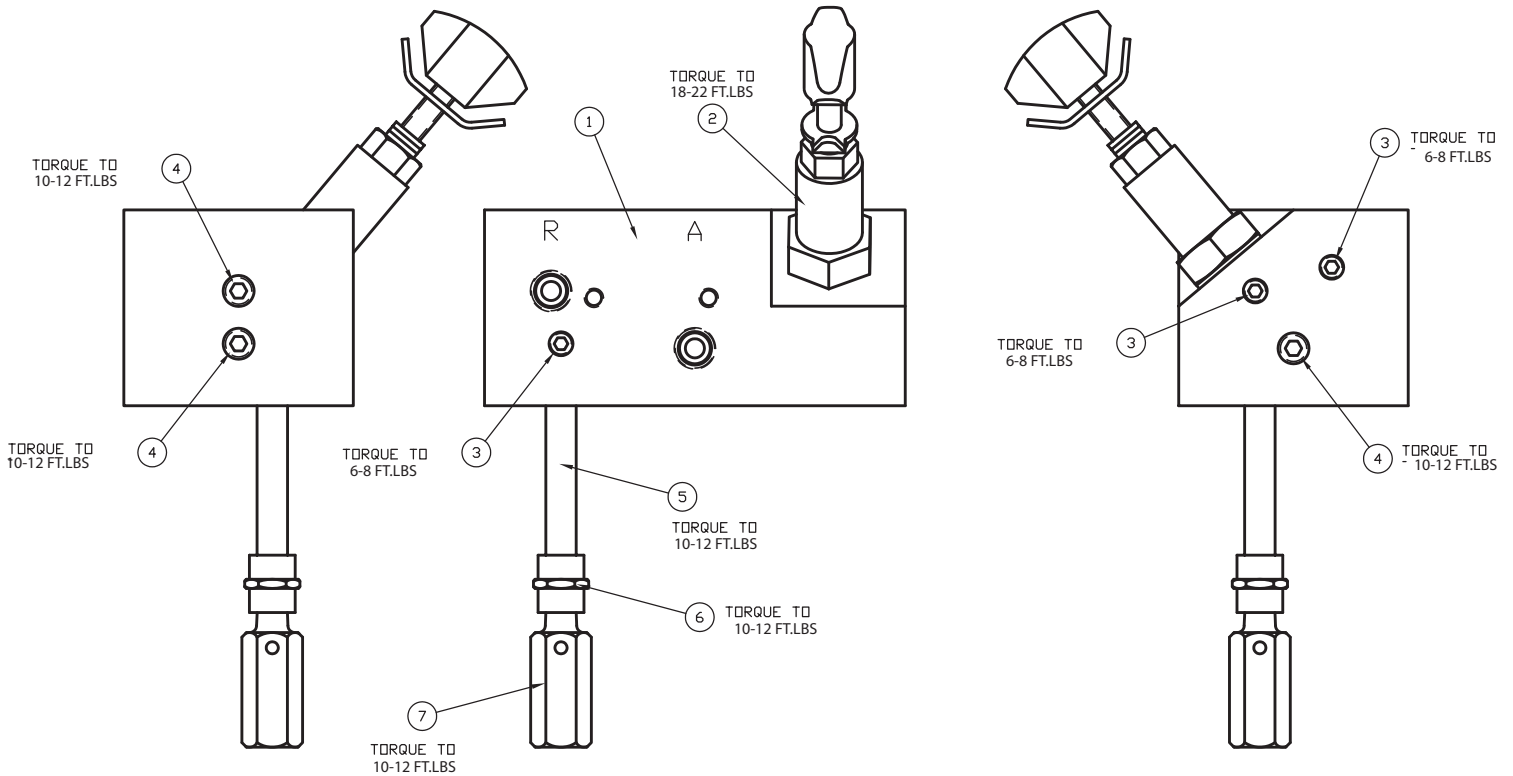
ITEM#	DESCRIPTION	PART#	QTY.
1	BODY-VALVE	68708	1
2	SLIDER TANDEM CENTER	68709	1
3	3/16" DIA. BALL REF WM581649	90548	4
4	SET SCREW 1/4-28 X 1/4 CUP	40254	4
6	O RING REF M792041	*	3
7	BACK UP WASHER	*	3
8	SHEAR SEAL	68383	3
9	SPRING	68384	3
10	O-RING 2 5/8 X 2 3/4	5602038	1
11	BEARING ROLLER 5/16x1/2x5/16 WIDE	68385	4
12	PIN BEARING	68390	2
13	SET SCREW 5/16-18 X 1/4 CUP	94418	1
14	SHCS #10-32 X 1" LG PLATED	68264	2
15	VALVE TOP PLATE MACHINED	46272	1
16	1/4" DIA. BALL	92549	1
17	O-RING (.19x.31x.06)BUNA	*	1
19	VALVE PLUG 2 POSITION SLIDER	46271	1
26	O RING	*	2
27	SPRING	68711	1
31	O-RING 5/16X7/16 URE	*	4
+ 32	PUSHER-SOLENOID	68729SS	1
33	RETAINER	++	1
34	O-RING	++	1
35	PUSHER PIN	++	1

*	PACKING KIT 4 WAY SOLENOID VALVE	54491	
+	PUSHER SOLENOID CONTAINS SPOOL ASSEMBLY, RETAINER, O-RING & PUSHER PIN		
++	PUSHER REPAIR KIT	68729RK	
	CONTAINS 1 EACH OF RETAINER, O-RING & PUSHER PIN		

G5 Series Electric Power Pump

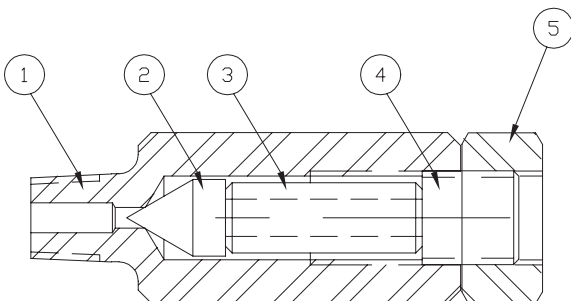
Manifold Assembly

(46292SS) MANIFOLD ASM.



ITEM #	DESCRIPTION	PART #	QTY.
01	VALVE MANIFOLD	46270	1.00
02	CARTRIDGE RELIEF VALVE	45423	1.00
03	1/16 PIPE PLUG-FLUSH	40049	3.00
04	PIPE PLUG 1/8" FLUSH	81093	3.00
05	PIPE NIPPLE 1/8 NPT	68917	1.00
06	PIPE COUPLING 1/8	68918	1.00
07	INT.RELIEF ASM HF	68999SS	1.00

(68999SS) INT. RELIEF ASM.

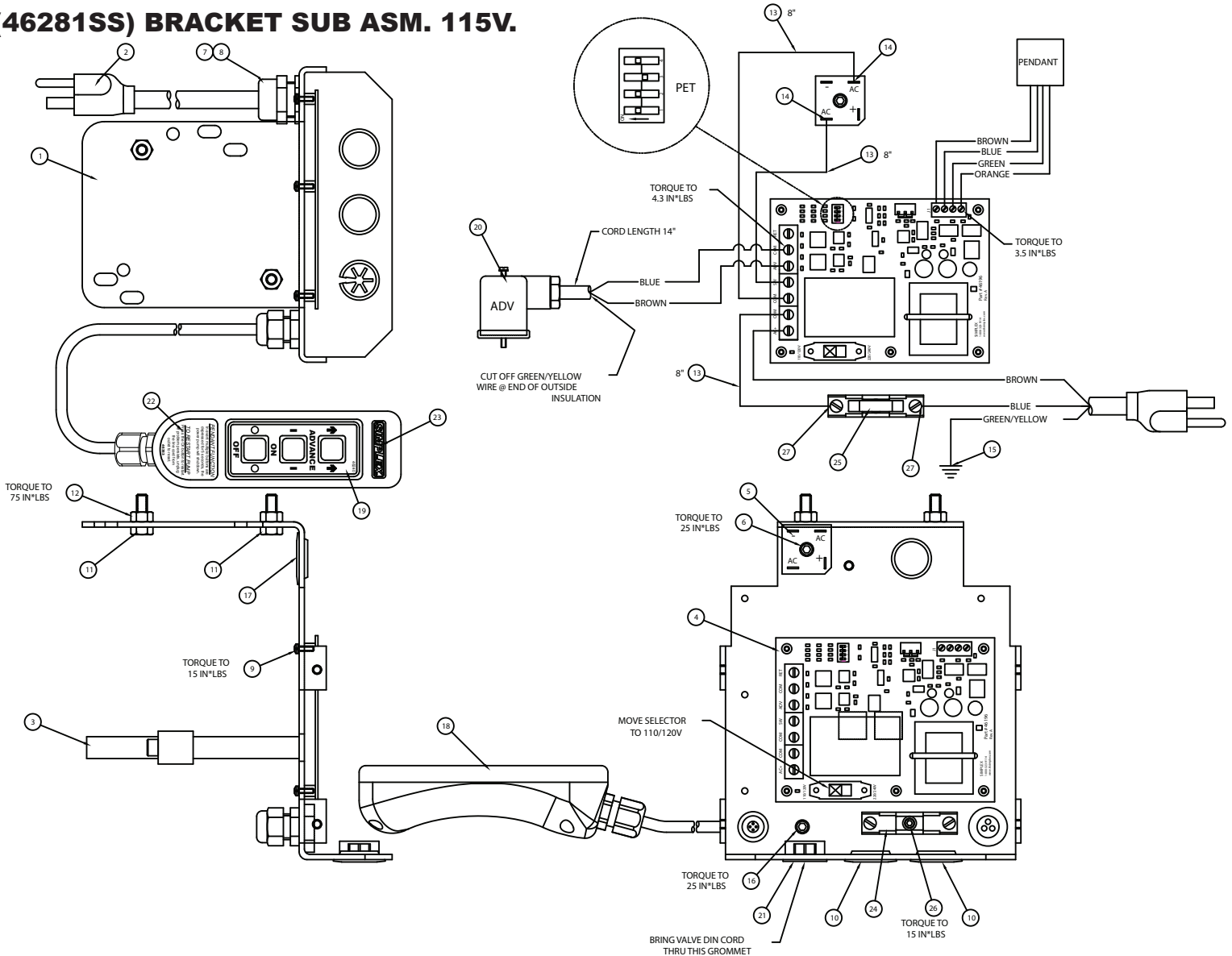


ITEM #	DESCRIPTION	PART #	QTY.
01	CARTRIDGE	66096	1.00
02	CONE REL VLVE	66086	1.00
03	POPPET RELIEF SPRING	44641	1.00
04	RELIEF VALVE ADJUSTING SCREW	66083	1.00
05	HEX NUT 7/16-20	68920	1.00

G5 Torque Wrench Power Pump

Bracket Sub Assemblies

(46281SS) BRACKET SUB ASM. 115V.



ITEM #	DESCRIPTION	PART #	QTY.
01	MOUNTING BRACKET /G5	46233	1.00
02	PLUG AND CORD ASSY	68595	1.00
03	HOSE CLAMP	69235	1.00
04	CIRCUIT BOARD BASIC	46196	1.00
05	BRIDGE RECTIFIER 25A	68623	1.00
06	SHCS #10-32 X 1/2	66805	1.00
07	FITTING,CORD L-TIGHT	68375	1.00
08	LOCKNUT 1/2 INCH	85510	1.00
09	MACHINE SCREW W/ LOCK WASH	46248	5.00
10	HOLE PLUG 7/8"	69652	2.00
11	HHCS 1/4-20 X .75 PLT	65891	2.00
12	HEX NUT 1/4-20 PLATD	93849	2.00
13	WIRE #14 BLACK	68261B	2.00
14	QUICK DISCON. FLAG BLUE	44491	2.00

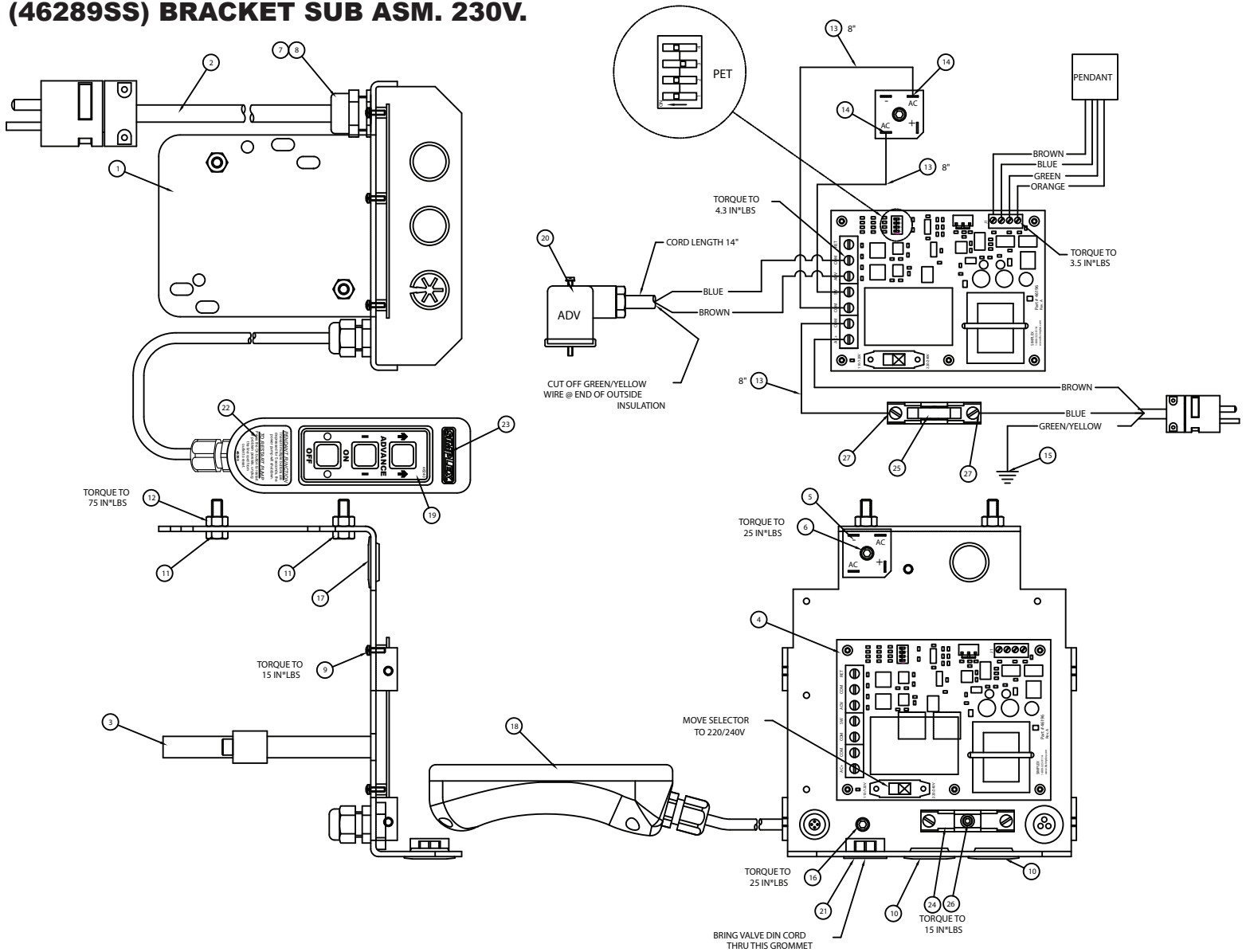
ITEM #	DESCRIPTION	PART #	QTY.
15	RING TERMINAL 1/4"	69917	1.00
16	SHCS #10-32X1/4" LG PLATED	45175	1.00
17	GROMMET 7/8" HOLE	69855	1.00
18	PENDANT ASSEMBLY BASIC	46220	1.00
19	MEMBRANE SWITCH LABEL PET	*	1.00
20	MOLDED DIN CONNECTOR W/ CORD	46327	1.00
21	PUSH THRU BUSHING	46420	1.00
22	DECAL PENDANT INSTRUCTION	*	1.00
23	SIMPLEX DECAL 1.25" x 0.25"	*	1.00
24	FUSE HOLDER 30 AMP	46481	1.00
25	FUSE 25 AMP	46482	1.00
26	SHCS #6-32 x 1/4 LONG	46506	1.00
27	SPADE TERMINAL	68116	2.00

G SERIES PENDANT DECAL KIT (* = COMPONENTS) -- PART # 54489

G5 Torque Wrench Power Pump

Bracket Sub Assemblies

(46289SS) BRACKET SUB ASM. 230V.



ITEM #	DESCRIPTION	PART #	QTY.
01	MOUNTING BRACKET	46233	1.00
02	Cord Asem. 230V US/CAN Lg 6FT	DD4773052	1.00
03	HOSE CLAMP	69235	1.00
04	CIRCUIT BOARD BASIC	46196	1.00
05	BRIDGE RECTIFIER 25A	68623	1.00
06	SHCS #10-32 X 1/2	66805	1.00
07	FITTING, CORD L-TIGHT	68375	1.00
08	LOCKNUT 1/2 INCH	85510	1.00
09	MACHINE SCREW W/ LOCK WASH	46248	5.00
10	HOLE PLUG 7/8"	69652	2.00
11	HHCS 1/4-20 X .75 PLT	65891	2.00
12	HEX NUT 1/4-20 PLATD	93849	2.00
13	WIRE #14 BLACK	68261B	2.00
14	QUICK DISCON. FLAG BLUE	44491	2.00

ITEM #	DESCRIPTION	PART #	QTY.
15	RING TERMINAL 1/4"	69917	1.00
16	SHCS #10-32X1/4" LG PLATED	45175	1.00
17	GROMMET 7/8" HOLE	69855	1.00
18	PENDANT ASSEMBLY BASIC	46220	1.00
19	MEMBRANE SWITCH LABEL PET	*	1.00
20	MOLDED DIN CONNECTOR W/ CORD	46327	1.00
21	PUSH THRU BUSHING	46420	1.00
22	DECAL PENDANT INSTRUCTION	*	1.00
23	SIMPLEX DECAL 1.25" x 0.25"	*	1.00
24	FUSE HOLDER 30 AMP	46481	1.00
25	FUSE 12 AMP	46739	1.00
26	SHCS #6-32 x 1/4 LONG	46506	1.00
27	SPADE TERMINAL	68116	2.00

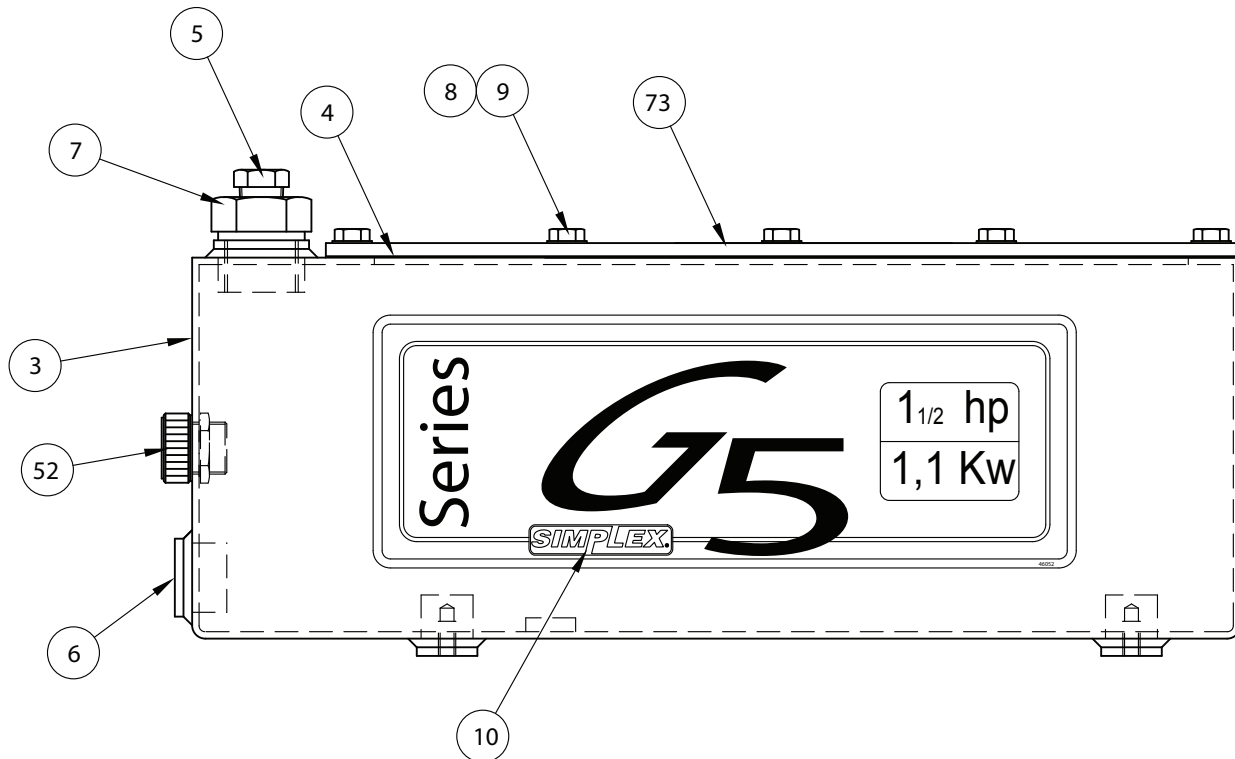
G SERIES PENDANT DECAL KIT (* = COMPONENTS) -- PART # 54489

G5 Series Electric Power Pump

Reservoirs

(45996P) 1.5 GALLON RESERVIOR

(46213P) 2.5 GALLON RESERVIOR



ITEM #	DESCRIPTION	QTY.	1.5 GALLON	2.5 GALLON	QTY.
03	RESERVOIR	1.00	45996P	46213P	1.00
04	RESERVOIR GASKET	1.00	85469	85469	1.00
05	BREATHER VENT 3/8" NPT	1.00	46348	46348	1.00
06	1/2 SOC PIPE PLUG	1.00	46697	46697	1.00
07	SAE #12 HEX PLUG WITH PORT	0.00	46118	46118	1.00
08	HHCS 1/4-20 x 3/4 LG PLATED	9.00	65891	65891	14.00
09	SEALING WASHER	9.00	65892	65892	14.00
10	G5 RESERVOIR DECAL	1.00	46052	46052	1.00
52	SIGHT GAUGE	1.00	46009	46009	1.00
73	COVER PLATE	1.00	45928	45928	1.00



UNITED STATES HOME OFFICE
777 OAKMONT LANE, STE. 800 - WESTMONT, IL 60559
PHONE: 1-630-590-6990 • FAX 1-630-590-6955 • TOLL FREE: 1-800-323-9114
EMAIL: sales@tksimplex.com • www.tksimplex.com