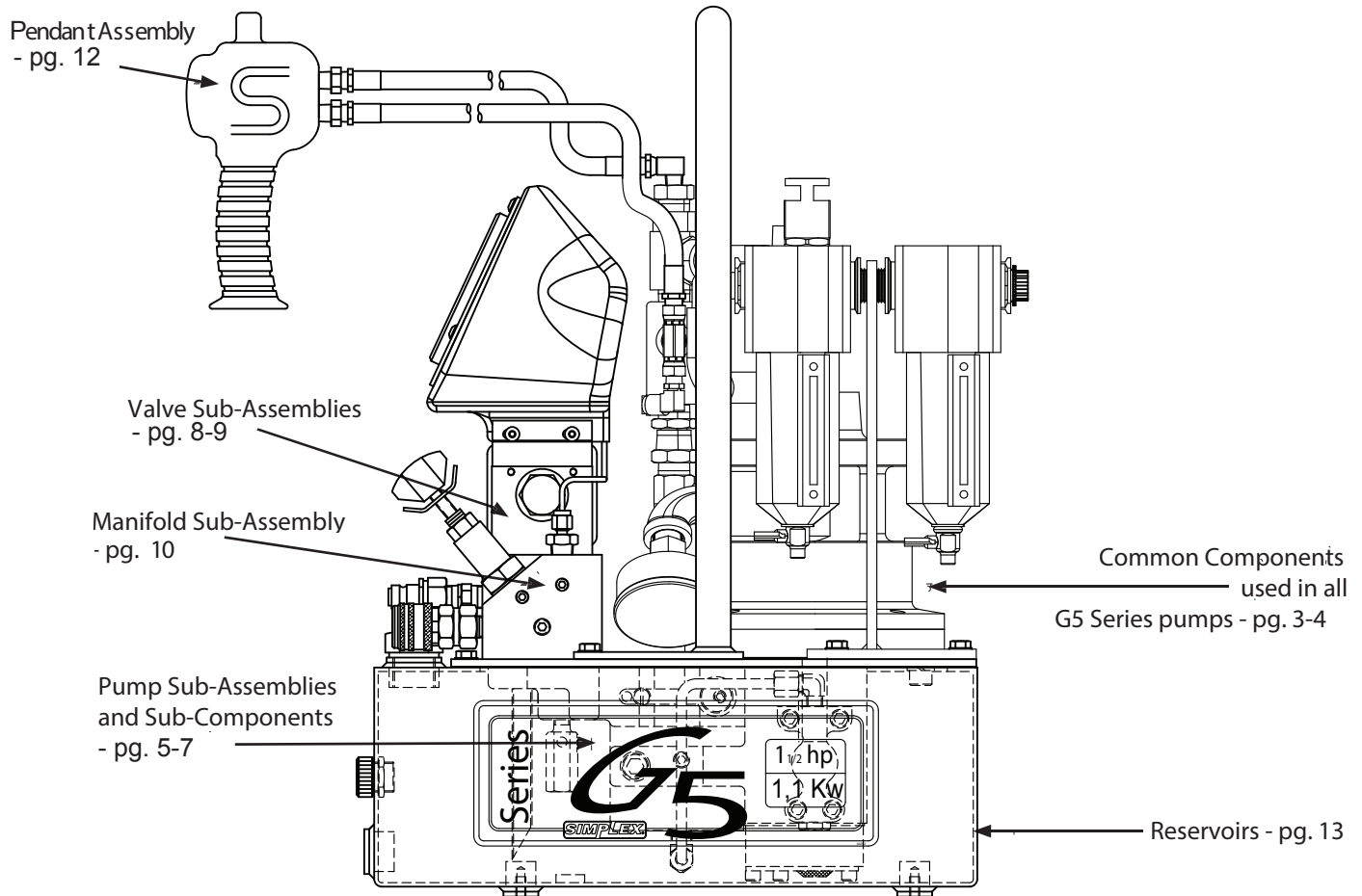




N86 W12500 Westbrook Crossing, Menomonee Falls, WI 53051
Phone - USA only: (800) 323-9114
Phone - Inside/Outside USA: (262) 293-1575
FAX (262) 597-1127
www.tksimplex.com

G5 SERIES AIR TORQUE PUMP
PARTS IDENTIFICATION MANUAL
Reference # - TD059
Rev. - B
Date - 6/20

.....
This illustration is for reference purposes only. The
appearance of your unit may differ from the unit shown.
.....



G5 Torque Wrench Power Pump

How to Identify Parts for Your Model.

MODEL MATRIX

Understanding our model number configurations:

	PUMP CLASS		PUMP TYPE			OPTION 1
Sample Model #:	G	5	7	7	2	T
Description:	Model	Performance Series	Power Consumption	Valve Function	Reservoir Size	Options
	G = Gen II Pump	5 = 3HP Air Motor	7 = Rotary Vane	7 = Torque Wrench 4Way/ 2Position	2 = 1.5 Gallon 3 = 2.5 Gallon	T = Torque Wrench

MODEL NUMBER & DATE CODE LOCATION

For Example, the date code and serial number

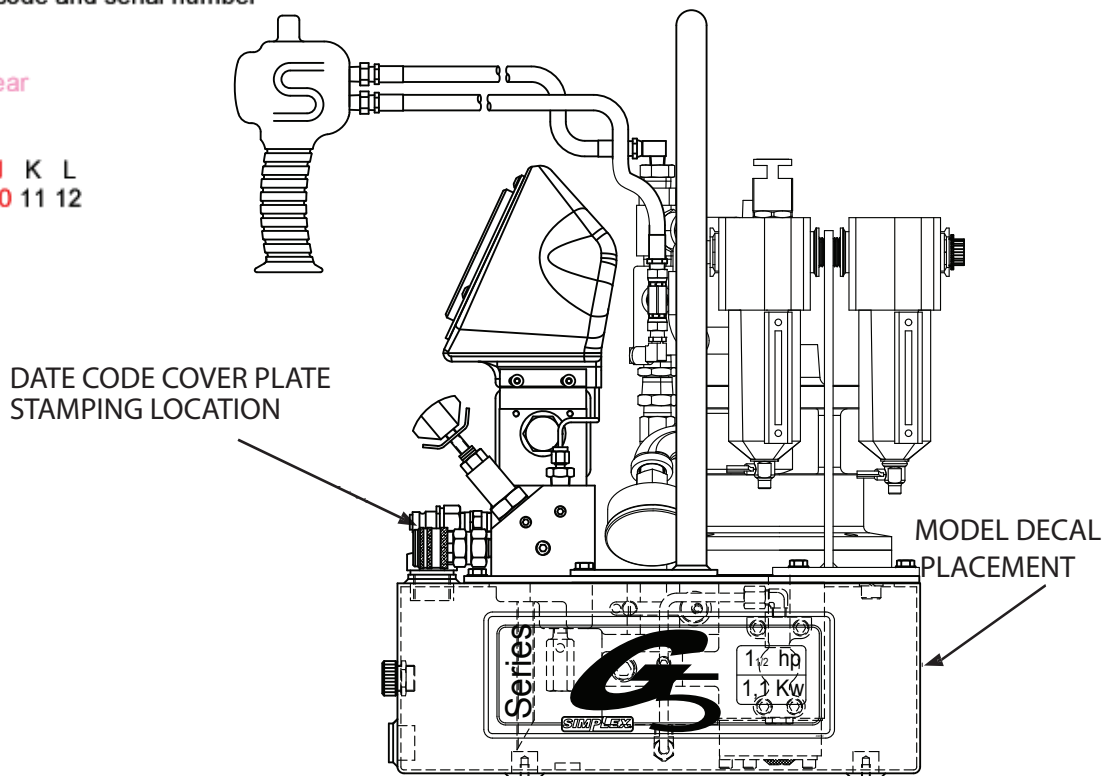
J= **October**

07 = **Year 2007**

42= **Week number in year**

J 07 42

A B C D E F G H I J K L
1 2 3 4 5 6 7 8 9 10 11 12



G5 Torque Wrench Power Pump

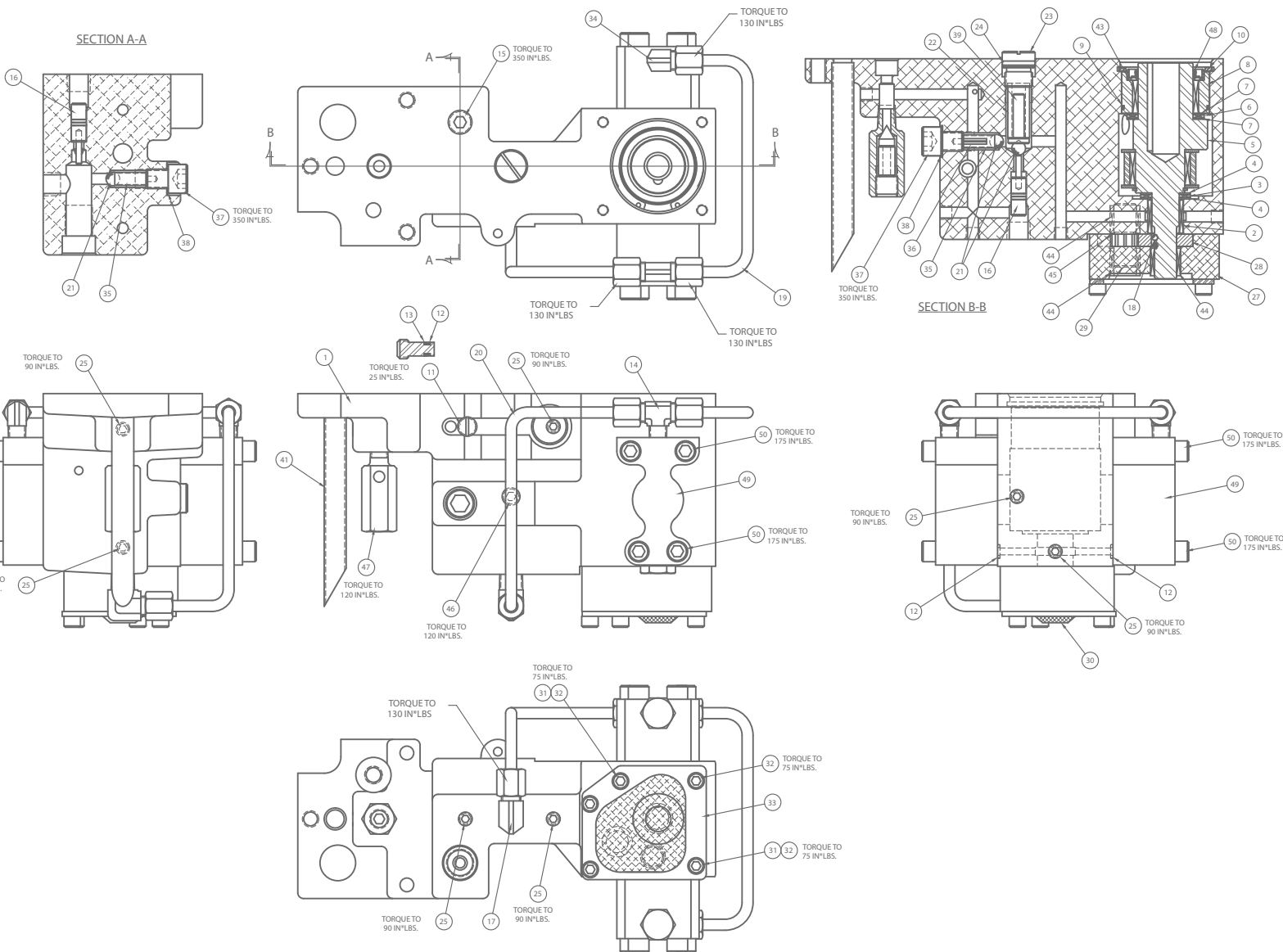
Common Components

ITEM #	DESCRIPTION	PART #	QTY.
2	PUMP ASM. G5 2 STAGE	SEE PAGE 5-7	1
3	RESERVOIR	SEE PAGE 13	1
4	RESERVOIR GASKET	85469	1
5	BREATHER VENT 3/8" NPT	46348	1
6	PIPE PLUG 1/2" W/ COATING	46697	1
7	SAE #12 HEX PLUG WITH PORT	46118	1
8	HHCS 1/4-20 X .75 PLT	65891	14
9	SEALING WASHER	65892	14
10	RESERVOIR DECAL G5	46052	2
11	SAFE USE DECAL AIR	68394	1
12	BLANK DECAL 3 X 4	87305	1
13	MANIFOLD ASM. TORQUE WRENCH	SEE PAGE 10	1
14	VALVE GASKET	69242	1
15	SHCS 3/8-16 X 2 3/4	99921	3
16	VAL ADP	SEE PAGE 9	1
17	HEX PIPE PLUG 3/8" W/ COATING	46513	1
19	AIR SOLENOID 4W/2P NORMALLY RETRACT	SEE PAGE 8	1
20	SHCS 3/8-16 X 3 1/2	88363	4
21	LOCKWASHER 3/8 PLATED	93943	6
22	ROLL PIN 1/8 X 3/8 LG	561604	1
24	MAGNET	66021	1
25	HANDLE	46378	1
27	DECAL OVERLAY	46539	1
41	PENDANT AIR TORQ WRE	SEE PAGE 12	1
52	SIGHT GAUGE	46009	1
57	1/4 IN NIPPLE	4100067	1
58	1/4" NIPPLE	CT210	1
59	1/4" SELF-LOCKING COUPLER	45765	1
62	GAUGE SHROUD ASSEMBLY TORQUE WRENCH	SEE PAGE 7	1
64	BHCS 10-24X.50 316SS	44559	4
65	GAUGE SHROUD MOUNTING PLATE	46588	2
70	GASKET-MOTOR	66012	1
71	PUMP GASKET G5	46032	1
72	STREET ELBOW	86244	1
73	COVER PLATE G5 TORQUE WRENCH	46334	1
74	PIN,DOWEL 3/16 1" LONG	69026	1
75	SHCS 3/8-16 X 3/4 LG	97084	4
76	AIR MOTOR 6AM PAINTED BLACK	86447B	1
78	FHCS 1/4-28 x 0.50 LONG	46279	4
79	MOTOR STANDOFF	46392	1
81	ELBOW MALE 1/2 NPT PIPE	86243	1
82	AIR CONTROL VALVE ASSEMBLY	SEE PAGE 9	1
83	MALE HEX NIPPLE 1/4" - 1/8"	45970	1
84	SHUTTLE VALVE	44245	1
88	HOSE CLAMP	87283	2
89	HOSE	41965	1
90	FILTER/LUBRICATOR ASSEMBLY G5	SEE PAGE 11	1
91	HOSE- PUSH LOK	69645R	11"
92	NYLON TUBING	S69361	19"
93	ANTI-FREEZE LUBE	18243	1
95	MALE ELBOW 1/4" TUBE	68794	2
96	FILLER PLUG	68571	1

G5 Torque Wrench Power Pump

Pump Assembly

PART # 46335SS (PUMP ASM G5)



G5 Torque Wrench Power Pump

Pump Assembly

PART # 46335SS (PUMP ASM G5)

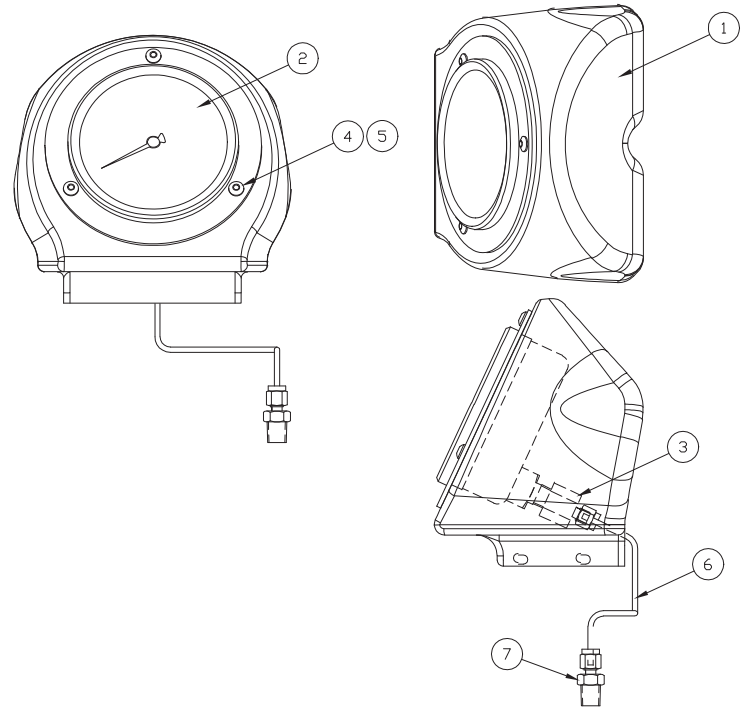
ITEM #	DESCRIPTION	PART #	QTY
1	PUMP BODY G5	45750	1
2	BEARING ROLLER 5/8x13/16x5/8 WIDE	68360	1
3	THRUST BEARING	66033	1
4	THRUST WASHER	66474	2
5	ECCENTRIC SHAFT ASM 5/8" G5	45820SS	1
6	THRUST BEARING	66106	1
7	THRUST WASHER	66108	2
8	ECCENTRIC SHAFT ADAPTER G5	45908	1
9	O-RING 1 3/4 X 1 7/8	5602031	1
10	RETAINING RING	68978	1
11	POW'R BUD DUMP PLUG	43283	1
12	O-RING 3/16X5/16	5602008	3
13	BACKUP WASHER	56080087	1
14	MALE TEE 1/8" PIPE TO 1/4" TUBE	45426	1
15	PIPE PLUG 1/4" FLUSH W/ COATING	46509	1
16	UNLOADING PISTON ASSEMBLY	43766SS	2
17	MALE ELBOW 1/4" TUBE 1/4" PIPE	45929	1
18	BALL 1/8"	90906	2
19	G5 PISTON BLOCK TUBE	46548	1
20	OUTLET TUBE PISTON BLOCK	45815	1
21	BALL 5/16"	91701	3
22	UNLOADING SPRING	43671	1
23	ADJUSTING SCREW G5	45903	1
24	O-RING 5/8X3/4 URETH	56020162	1
25	PIPE PLUG FLUSH 1/16 W/ COATING	40049	7
27	BOTTOM PLATE	45900	1
28	GEAR SET 9/33"	45823S	1
29	SHAFT-IDLER	68850	1
30	SCREEN	68921	1
31	TUBE-GUIDE .11	68894	2
32	SHCS 1/4-28 X 1 3/4	68255	5
33	PLATE-SCREEN MTG.	68927	1
34	MALE ELBOW 1/8 PIPE	69354	1
35	SPRING	68225	2
36	ROLL PIN 1/8 X 3/4 LONG	97782	1
37	BALL STOP G5	45904	2
38	GASKET 29/64 X 5/8	86269	2
39	SPRING CAP UNLOADING VALVE	43673	1
41	TUBE RETURN	68569	1
43	BEARING ROLLER 1 1/4x1 1/2x3/4 WIDE	66030	1
44	BEARING ROLLER 1/2x11/16x1/2 WIDE	68891	3
45	RING-RETAINING	68892	1
46	PIPE PLUG 1/8" FLUSH W/ COATING	46508	1
47	CART REL. VAL. ASSEMBLY	66220SS	1
48	SHAFT SEAL G5	45930	1
49	PISTON BLOCK ASM. G-SERIES 0.255"	46336SS	2
50	SHCS 5/16-24 X 1.75	69392	8

G5 Torque Wrench Power Pump

Pump Sub Assembly

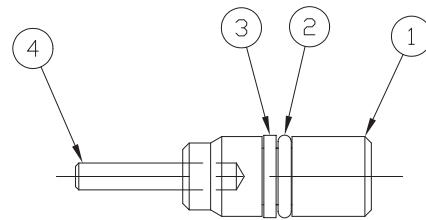
PART# 46474SS (GAUGE SHROUD ASSM)

ITEM#	DESCRIPTION	PART#	QTY
1	GAUGE SHROUD	46290	1
2	GAUGE TORQUE WRENCH W/ FLANGE	46329	1
3	FEMALE CONNECTOR 1/4 NPT-1/8 TUBE	46106	1
4	BHCS 10-24X.50 316SS	44559	3
5	U-STYLE NUT 10-24	46337	3
6	GAUGE TUBING TORQUE WRENCH	46398	1
7	MALE FITTING 1/4" NPT TO 1/8" TUBE	46293	1



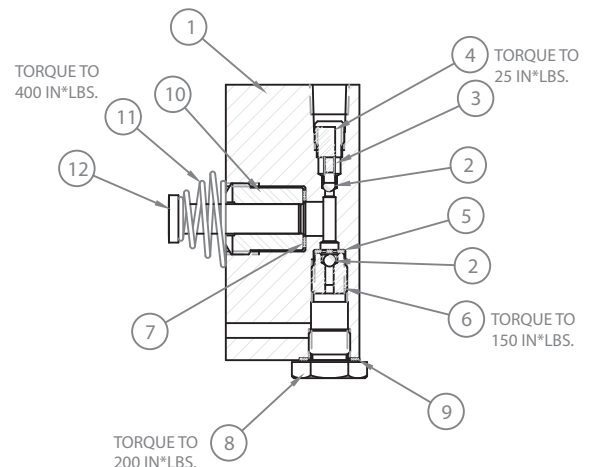
PART# 43766SS (UNLOADING PISTON ASM.)

ITEM #	DESCRIPTION	PART #	QTY.
01	UNLOAD PISTON	43765	1.00
02	O RING 1/4X3/8	5602009	1.00
03	BACK-UP WASHER TEF	43768	1.00
04	DOWEL PIN 1/8X3/4 LG	43686	1.00



PART# 46336SS (PISTON BLK ASM.)

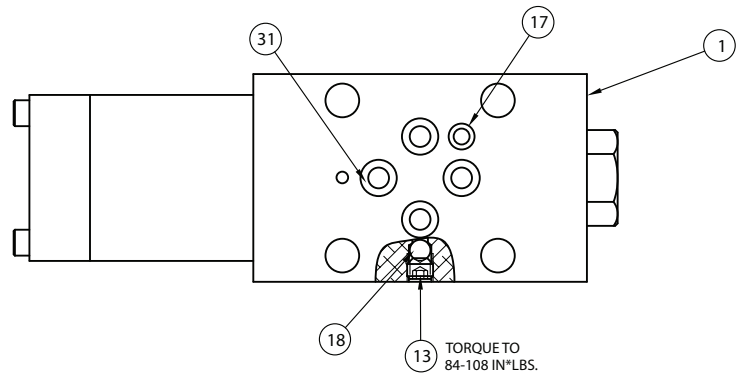
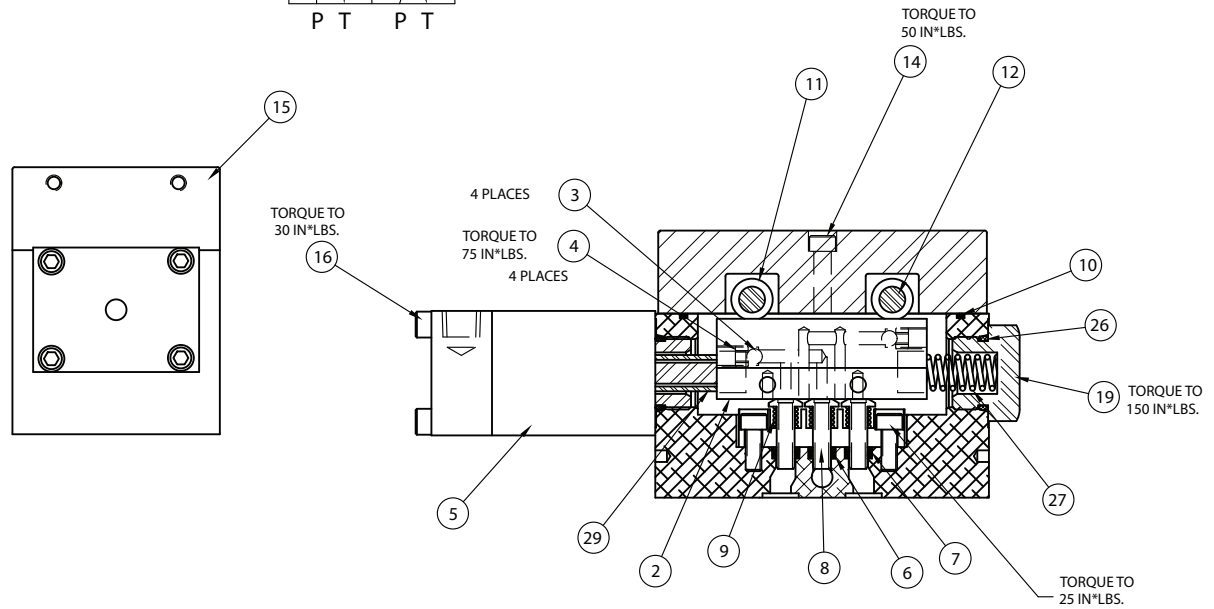
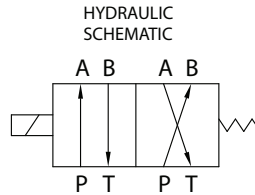
ITEM #	DESCRIPTION	PART #	QTY
1	PISTON BLOCK G3	45539	1
2	BALL 1/8"	90906	2
3	SPRING	66042	1
4	BALL STOP	68810	1
5	BALL RETAINER	66043	1
6	INTAKE SEAT	66046	1
7	GASKET 25/64X19/32	85726	1
8	PLUG PISTON BLOCK	68825	1
9	GASKET 29/64 X 5/8	86269	1
10	ADAPTOR .255 DIA.	68909	1
11	SPRING, PISTON	68340	1
12	PISTON .255 DIA.	68222	1



G5 Torque Wrench Power Pump

Valve Assembly

PART#46297SS (AIR SOLENOID 4W/2P)



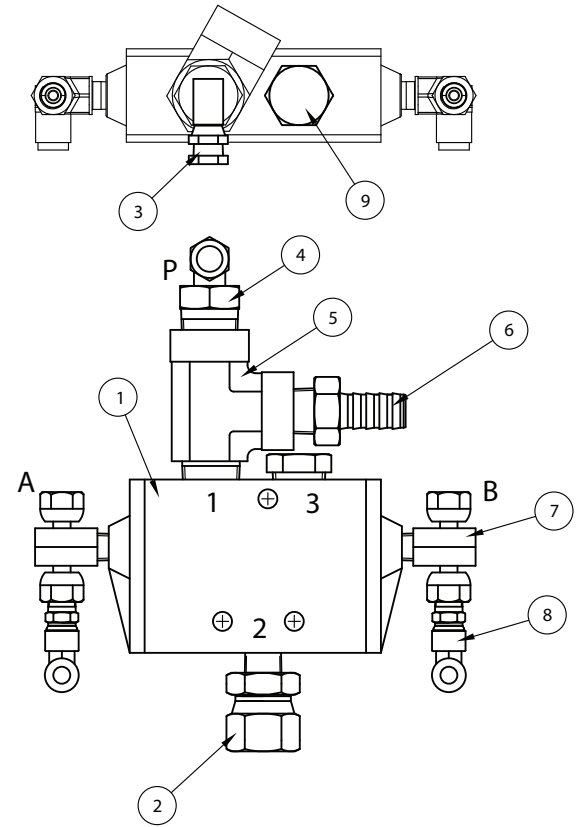
ITEM#	DESCRIPTION	PART #	QTY
1	BODY-VALVE	68708	1
2	SLIDER ADV/RET ONLY	44328	1
3	BALL 3/16"	90548	4
4	SET SCREW 1/4-28 X 1/4 CUP	40254	4
5	AIR CYL ASM	41954SS	1
6	O-RING 7/32X11/32	5602009	3
7	BACK UP WASHER	68391	3
8	SHEAR SEAL	68383	3
9	SPRING	68384	3
10	O-RING 2 5/8 X 2 3/4	5602038	1
11	BEARING ROLLER 5/16x1/2x5/16 WIDE	68385	4
12	PIN BEARING	68390	2
13	SET SCREW 5/16-18 X 1/4 CUP	94418	1
14	SHCS #10-32 X 1" LG PLATED	68264	2
15	VALVE TOP PLATE MACHINED	46272	1
16	SHCS #10-24 X 3.25"	41959	4
17	O-RING 3/16X5/16	5602008	1
18	BALL 1/4"	92549	1
19	VALVE PLUG 2 POSITION SLIDER	46271	1
26	O-RING SAE PORT #10	5603910	1
27	SPRING	68711	1
29	SPACER VALVE SLIDER	46418	1
31	O-RING 5/16X7/16 URE	56020112	4

G5 Torque Wrench Power Pump

Valve Sub Assembly

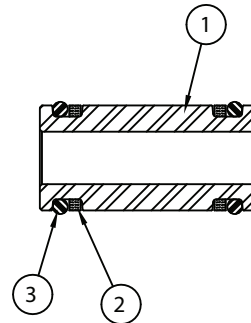
PART# 46544SS (AIR CONTROL VALVE ASSM.)

ITEM #	DESCRIPTION	PART #	QTY
1	AIR CONTROL VALVE 1/2" PORTS	45969	1
2	1/2" STRAIGHT SWIVEL	42967	1
3	SWIVEL ADP 1/8 90	42380	1
4	PIPE ADP 1/2-1/8	42377	1
5	MALE RUN TEE 1/2	42378	1
6	HOSE BARB 1/2" NPT TO 1/2" TUBE	45990	1
7	1/8 SWIVEL TEE	42968	2
8	SWIVEL NUT ELBOW	69362	2
9	1/2" NPT HEX HEAD PIPE PLUG	46117	1



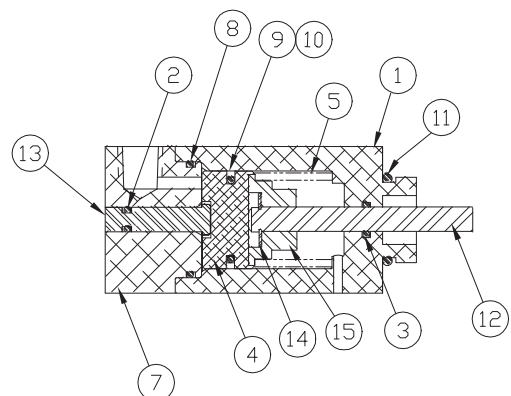
PART# 68963SS (VALVE ADPT)

ITEM#	DESCRIPTION	PART#	QTY.
1	VALVE ADP	88073	1
2	B-U RING	65881	2
3	O-RING 3/8X1/2	5602012	2



PART# 41954SS (AIR CYL ASSM)

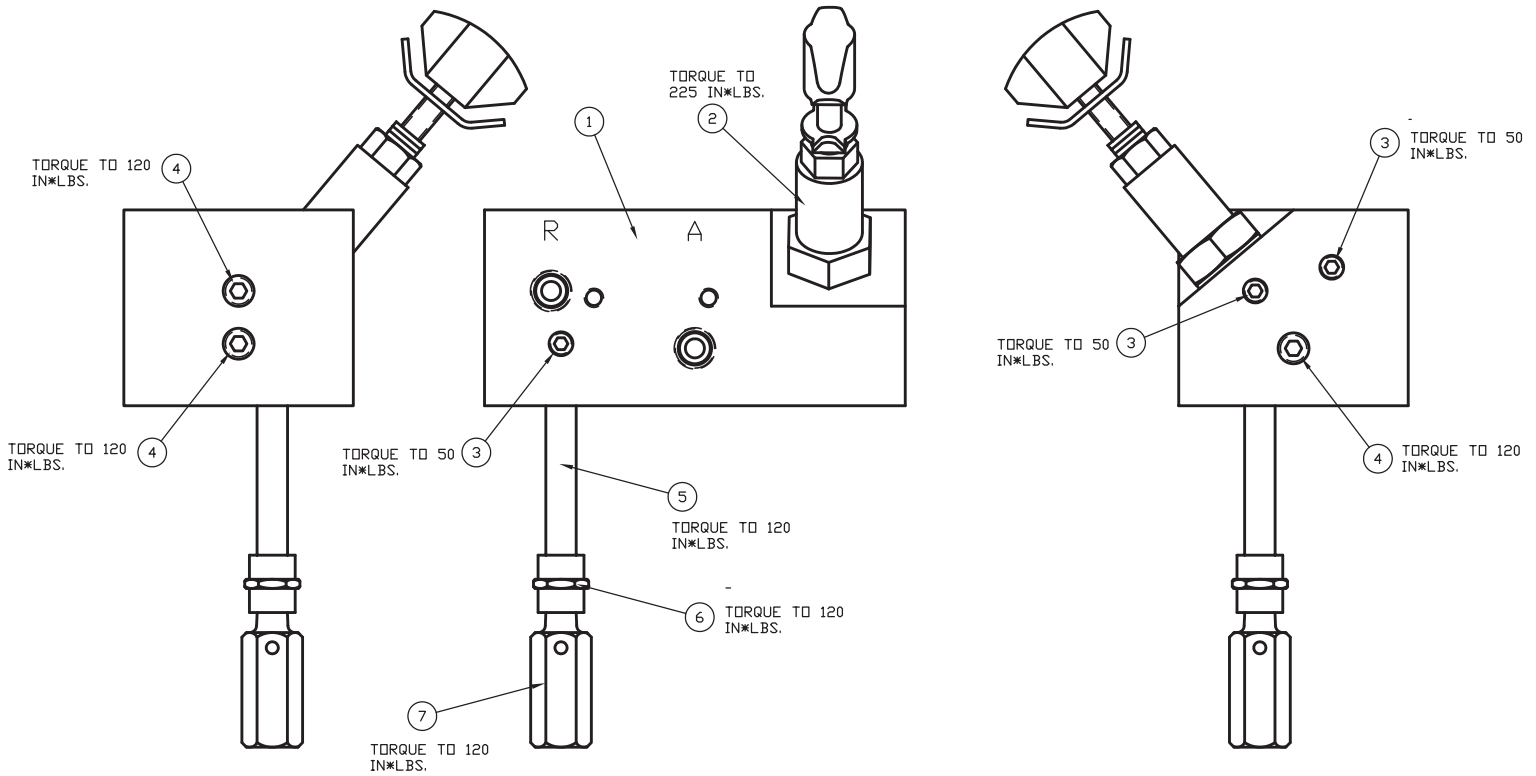
ITEM #	DESCRIPTION	PART #	QTY
1	BODY AIR CYL	42744	1
2	O-RING 1/8 X 1/4	5602006	1
3	O RING 1/4X3/8	5602010	1
4	AIR CYLINDER PISTON	42747	1
5	SPRING AIR CYL	42749	1
7	END CAP	41956	1
8	O-RING 1 1/16X1 3/16	5602023	1
9	SEAL	68497	1
10	O-RING 11/16X13/16	5602017	1
11	O-RING SAE PORT #10	5603910	1
12	PUSH PIN AIR VALVE	42746	1
13	OVERRIDE PIN	41958	1
14	E-RING 1/4" SHAFT	42750	1
15	SPRING PLATE AIR VLV	42748	1



G5 Torque Wrench Power Pump

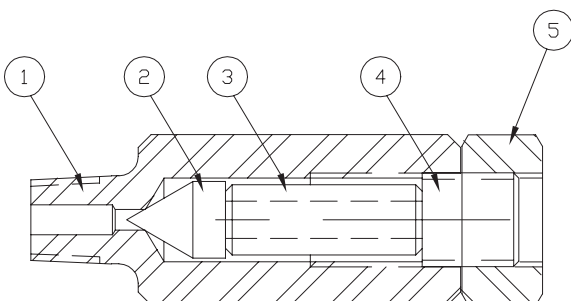
Manifold Assembly

(46292SS) MANIFOLD ASM.



ITEM #	DESCRIPTION	PART #	QTY.
01	VALVE MANIFOLD	46270	1.00
02	CARTRIDGE RELIEF VALVE	45423	1.00
03	1/16 PIPE PLUG-FLUSH	40049	3.00
04	PIPE PLUG 1/8" FLUSH	81093	3.00
05	PIPE NIPPLE 1/8 NPT	68917	1.00
06	PIPE COUPLING 1/8	68918	1.00
07	INT.RELIEF ASM HF	68999SS	1.00

(68999SS) INT. RELIEF ASM.

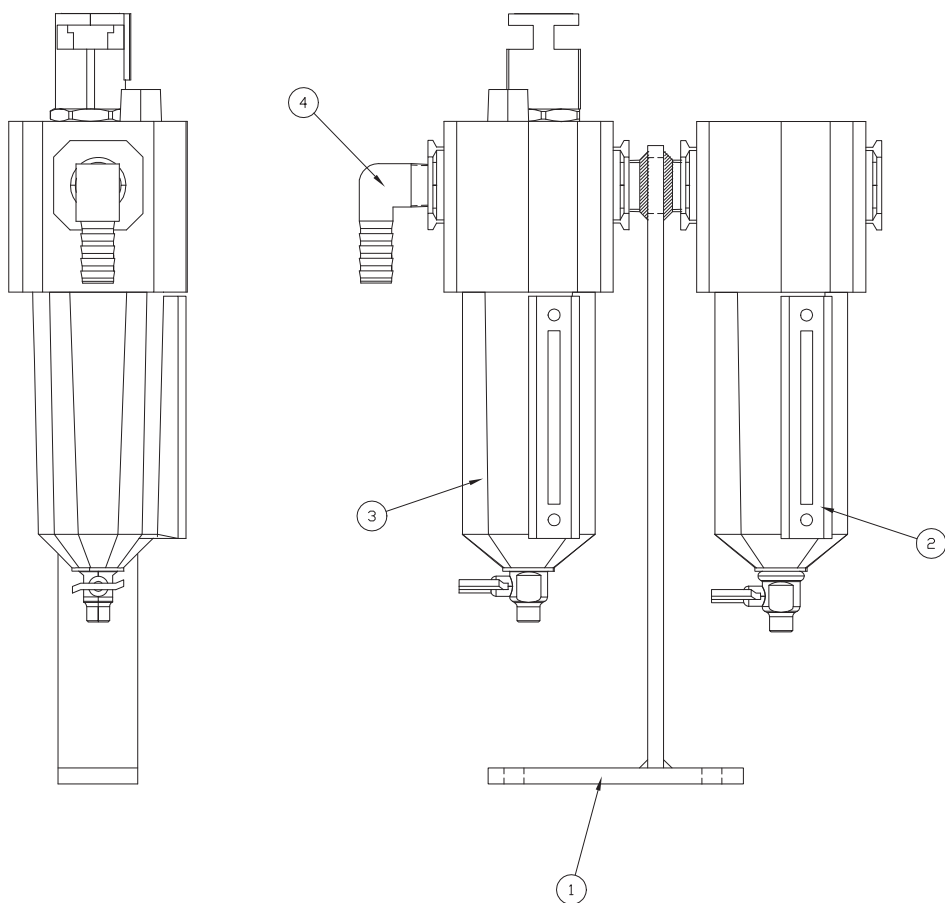


ITEM #	DESCRIPTION	PART #	QTY.
01	CARTRIDGE	66096	1.00
02	CONE REL VLVE	66086	1.00
03	POPPET RELIEF SPRING	44641	1.00
04	RELIEF VALVE ADJUSTING SCREW	66083	1.00
05	HEX NUT 7/16-20	68920	1.00

G5 Torque Wrench Power Pump

Filter Lube Assembly

PART# 46542SS (FILTER LUBRICATOR)



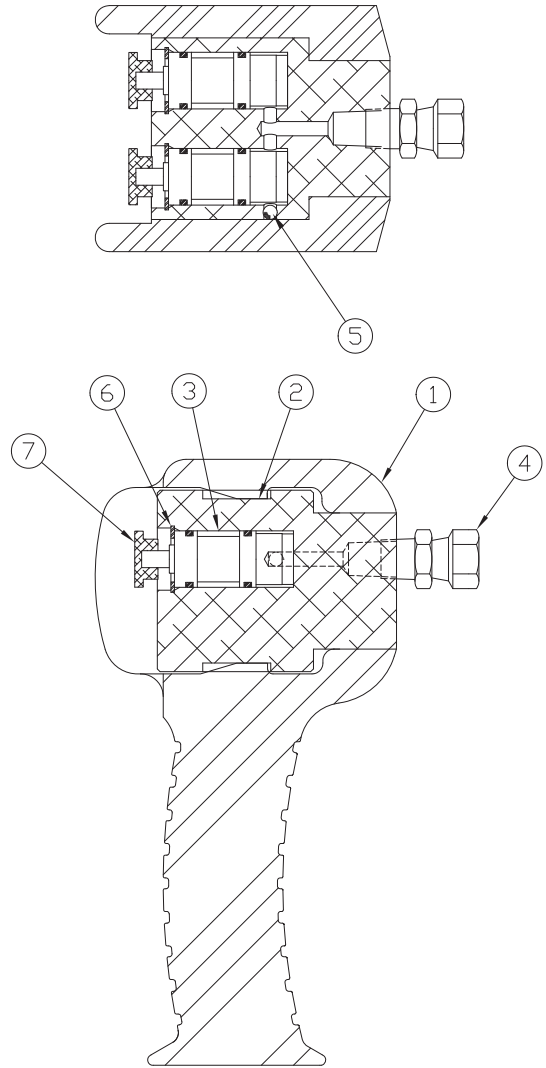
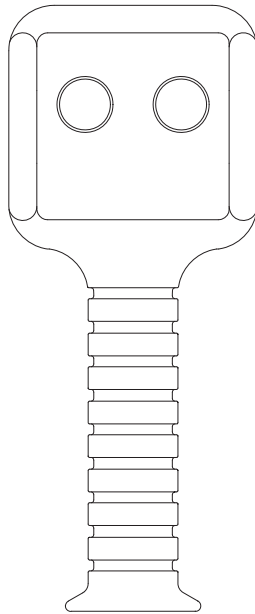
ITEM #	DESCRIPTION	PART #	QTY
1	FILTER/LUBRICATOR BRACKET	46395	1
2	AIR FILTER	86241	1
3	AIR LUBRICATOR	86242	1
4	HOSE BARB ELBOW 1/2" NPT TO 1/2" TUBE	45991	1

G5 Torque Wrench Power Pump

Pendant Assembly

PART# 68799SS (PENDANT ASSM.)

ITEM#	DESCRIPTION	PART #	QTY
1	PENDANT BODY	41968	1
2	AIR PEND. BLOCK MOD.	68796	1
3	CARTRIDGE-AIR	41963	2
4	SWIVEL ADP 1/8	42381	3
5	BALL 5/32	6069613	3
6	RETAINING-RING	68808	2
7	CARTRIDGE CAP	41970	2

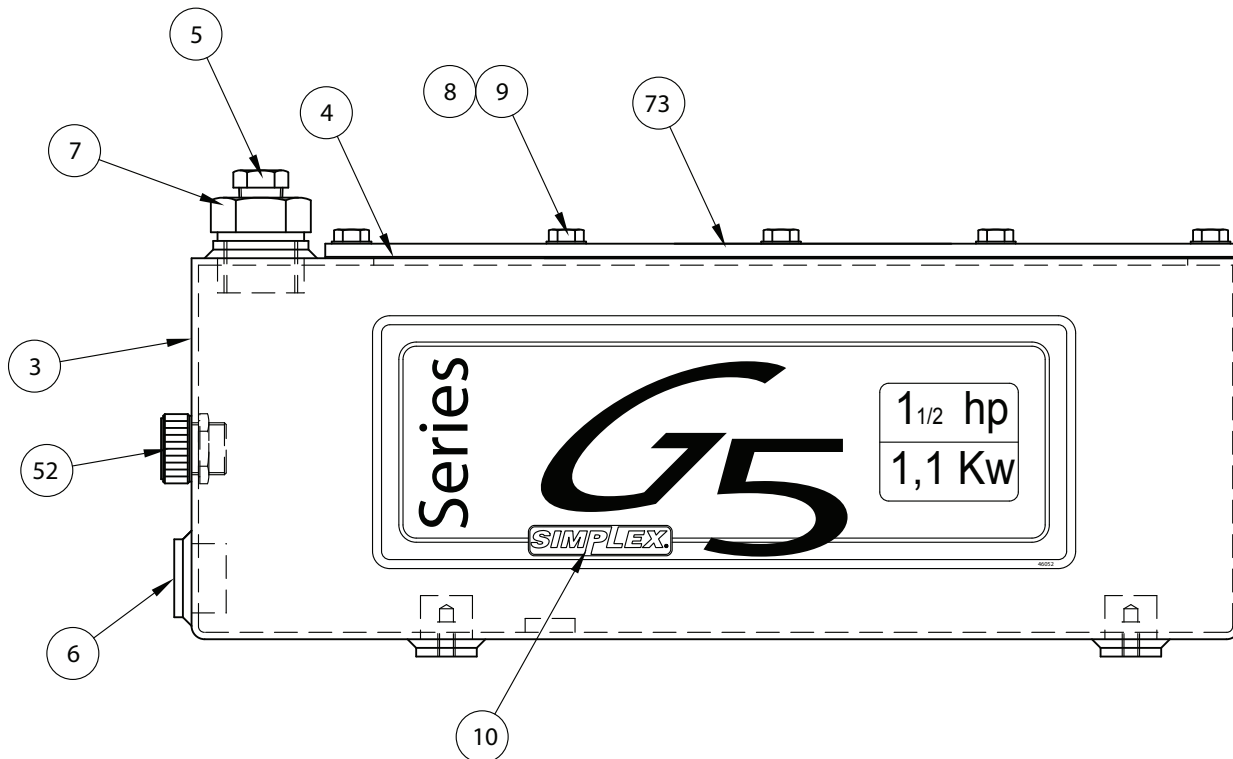


G5 Torque Wrench Power Pump

Reservoirs

(45996P) 1.5 GALLON RESERVIOR

(46213P) 2.5 GALLON RESERVIOR



1.5 GALLON RESERVOIR

NOTE: THIS ILLUSTRATION IS FOR REFERENCE ONLY.
THE APPEARANCE OF YOUR UNIT MAY DIFFER
FROM UNIT SHOWN.

ITEM #	DESCRIPTION	1.5 GALLON	2.5 GALLON	QTY.
03	RESERVOIR	45996P	46213P	1.00
04	RESERVOIR GASKET	85469	85469	1.00
05	BREATHER VENT 3/8" NPT	46348	46348	1.00
06	PIPE PLUG	46697	46697	1.00
07	SAE #12 HEX PLUG WITH PORT	46118	46118	1.00
08	HHCS 1/4-20 x 3/4 LG PLATED	65891	65891	14.00
09	SEALING WASHER	65892	65892	14.00
10	G5 RESERVOIR DECAL	46052	46052	1.00
52	SIGHT GAUGE	46009	46009	1.00
73	COVER PLATE	46334	46344	1.00

NOTE: ALL RESERVOIRS ARE POWDER COATED BLACK



UNITED STATES HOME OFFICE
N86 W12500 Westbrook Crossing - Menomonee Falls, WI 53051
PHONE - USA only: (800) 323-9114 • Inside/Outside USA: (262) 293-1575
FAX: (262) 597-1127
www.tksimplex.com