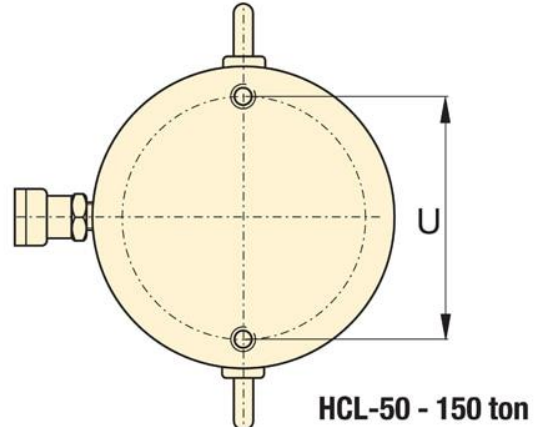
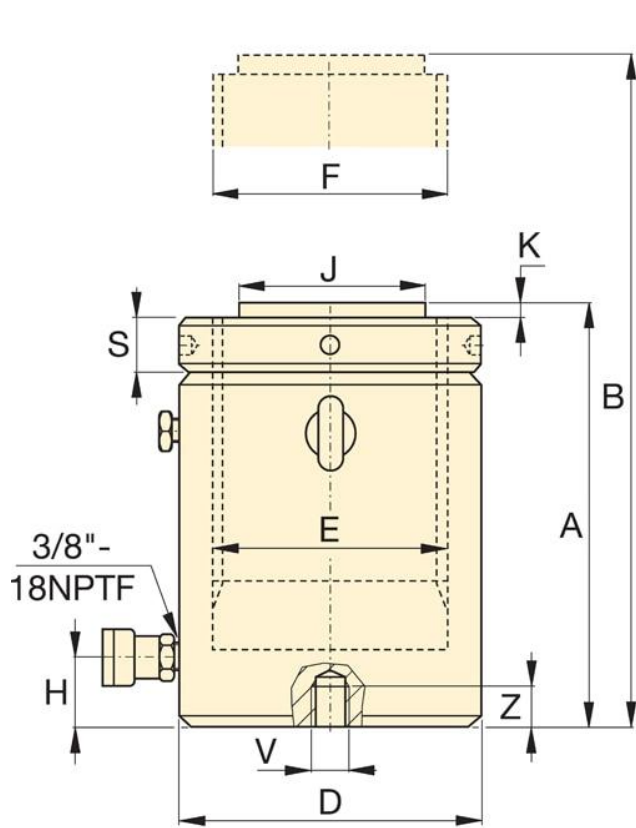


Specification

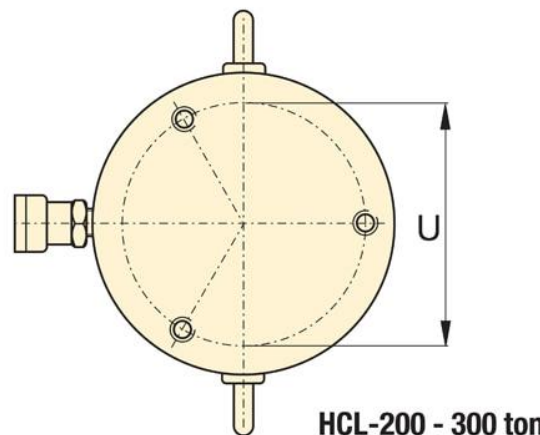
Maximum Operating Pressure (psi)	10,000
Capacity Class (tonnage)	150
Maximum Cylinder Capacity Advance (tons)	168
Stroke (in)	9.84
Collapsed Height A (in)	16.1
Extended Height B (in)	25.94
Return Type	Single-Acting, Load Return
Plunger Type	Solid
Material	Steel
Cylinder Effective Area Advance (in ²)	33.14
Oil Capacity Advance (in ³)	326.21
Sideload Resistance of Maximum Capacity (percentage)	10%
Surface Treatment	Nitride
Coupler	CR400 Coupler
Weight (lbs)	255

Dimensions

Collapsed Height A (in)	16.1
Collapsed Height With Optional Tilt Saddle A1 (in)	16.73
Optional Tilt Saddle Addition To Collapsed Height A1 (in)	0.71
Optional Tilt Saddle Diameter J1 (in)	4.96
Extended Height B (in)	25.94
Outside Diameter D (in)	8.46
Cylinder Bore Diameter E (in)	6.5
Base to Advance Port H (in)	1.61
Saddle Diameter J1 (in)	5.12
Saddle Protrusion from Plunger K (in)	0.08
Saddle Maximum Tilt Angle Radius (degrees)	5
Base Mounting Holes Thread V	M12 x 1,75



HCL-50 - 150 ton



HCL-200 - 300 ton