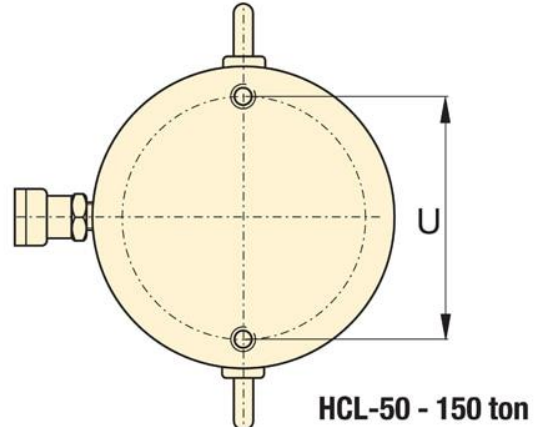
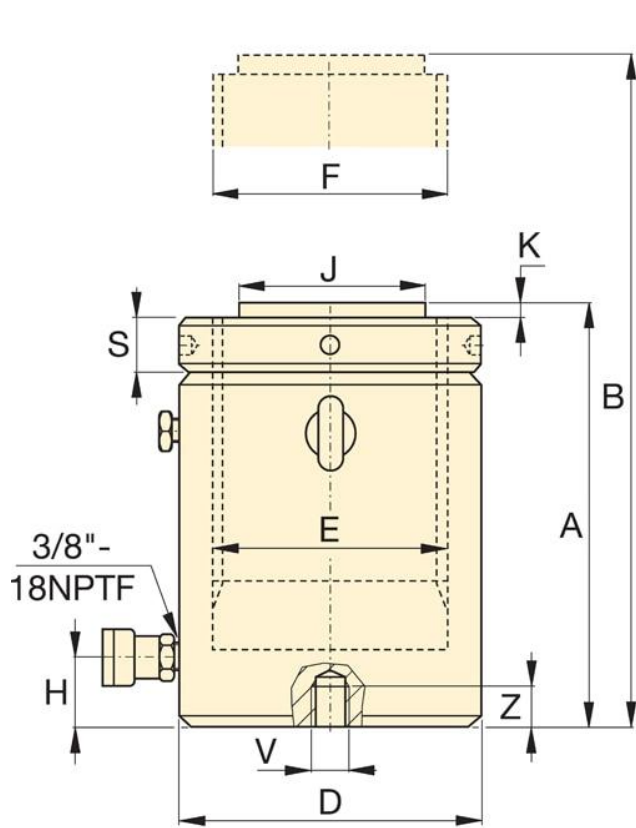


# Specification

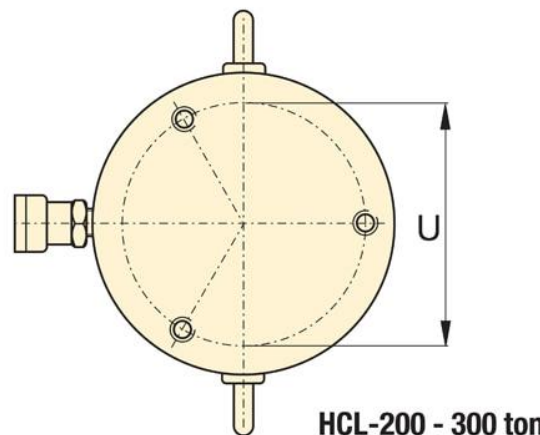
Maximum Operating Pressure (psi)	10,000
Capacity Class (tonnage)	50
Maximum Cylinder Capacity Advance (tons)	62
Stroke (in)	5.91
Collapsed Height A (in)	10.39
Extended Height B (in)	16.3
Return Type	Single-Acting, Load Return
Plunger Type	Solid
Material	Steel
Cylinder Effective Area Advance (in <sup>2</sup> )	12.17
Oil Capacity Advance (in <sup>3</sup> )	71.89
Sideload Resistance of Maximum Capacity (percentage)	10%
Surface Treatment	Nitride
Coupler	CR400 Coupler
Weight (lbs)	60

# Dimensions

Collapsed Height A (in)	10.39
Collapsed Height With Optional Tilt Saddle A1 (in)	10.98
Optional Tilt Saddle Addition To Collapsed Height A1 (in)	0.59
Optional Tilt Saddle Diameter J1 (in)	2.8
Extended Height B (in)	16.3
Outside Diameter D (in)	5.12
Cylinder Bore Diameter E (in)	3.94
Base to Advance Port H (in)	0.94
Saddle Diameter J1 (in)	2.8
Saddle Protrusion from Plunger K (in)	0.08
Saddle Maximum Tilt Angle Radius (degrees)	5
Base Mounting Holes Thread V	M8 x 1,25



HCL-50 - 150 ton



HCL-200 - 300 ton