



## Repair Parts Sheet

### Pow'r Riser Lifting Jacks PR Series - 150 Ton Air Models

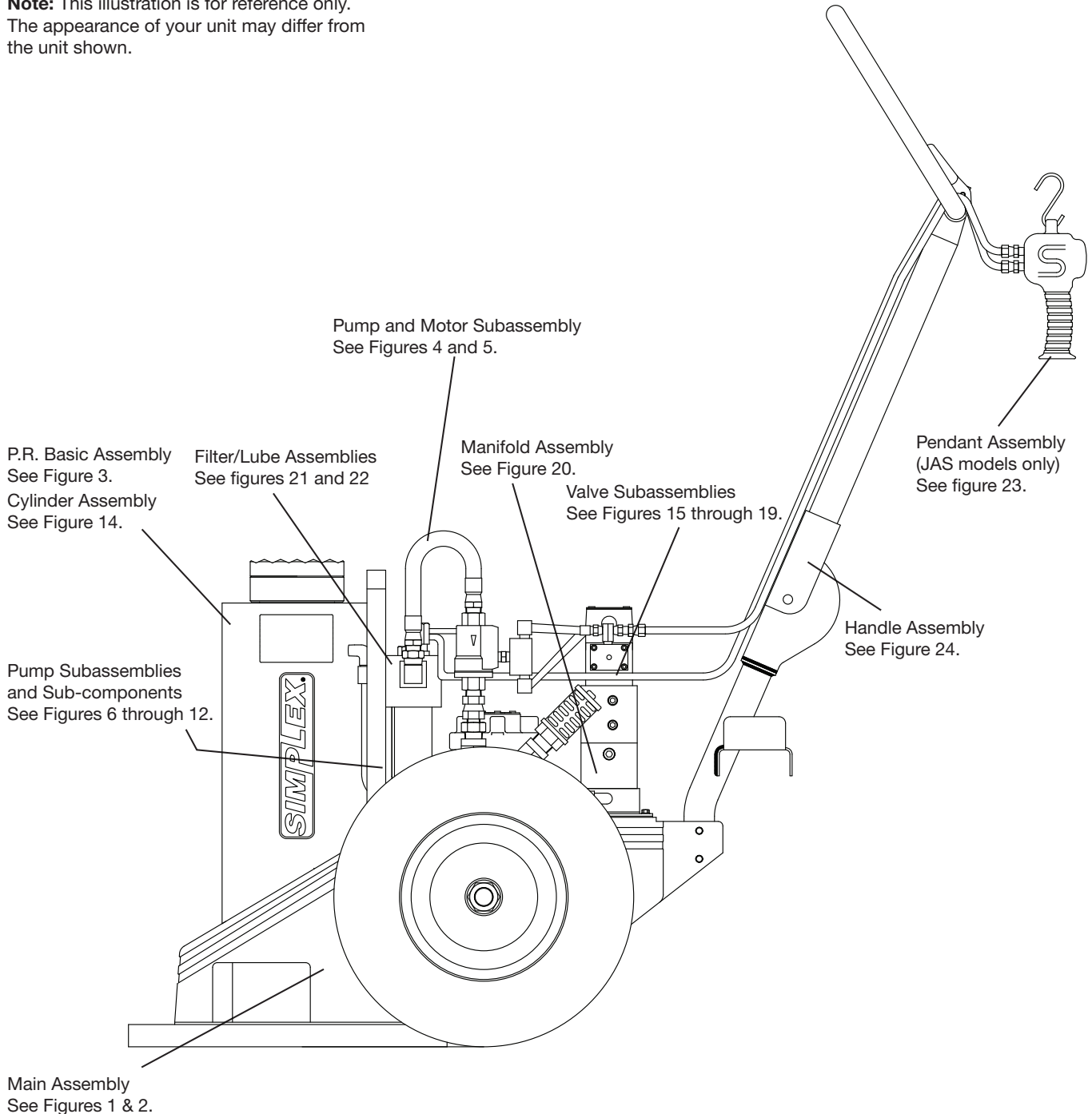
TD163 Rev. C 11/2021

For Date Codes Beginning with the Letter "B"

#### To Protect Your Warranty, Use Only SIMPLEX Hydraulic Oil.

Simplex recommends that all kit components be installed to insure optimum performance of the repaired product.

**Note:** This illustration is for reference only.  
The appearance of your unit may differ from  
the unit shown.

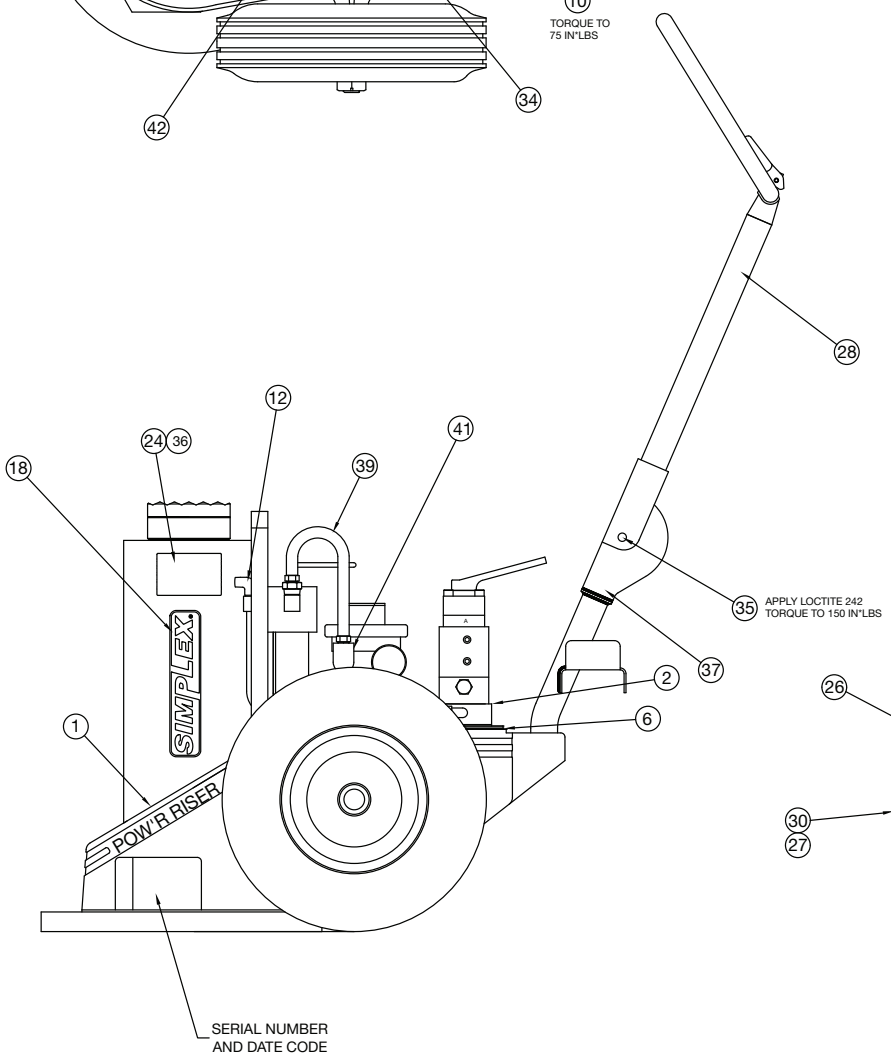
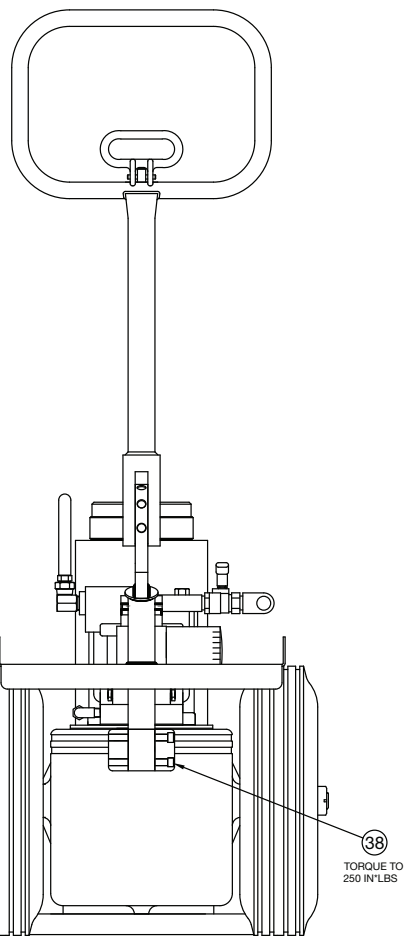
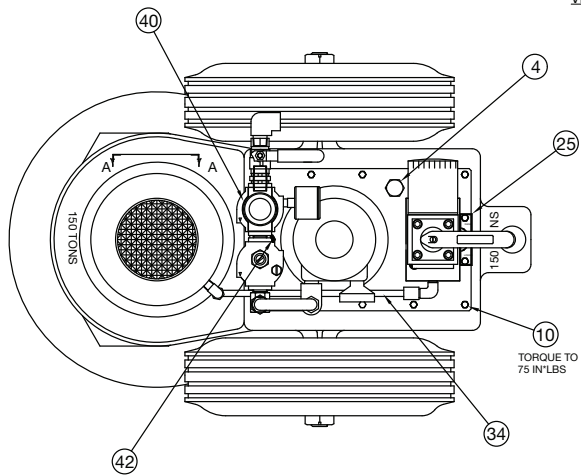
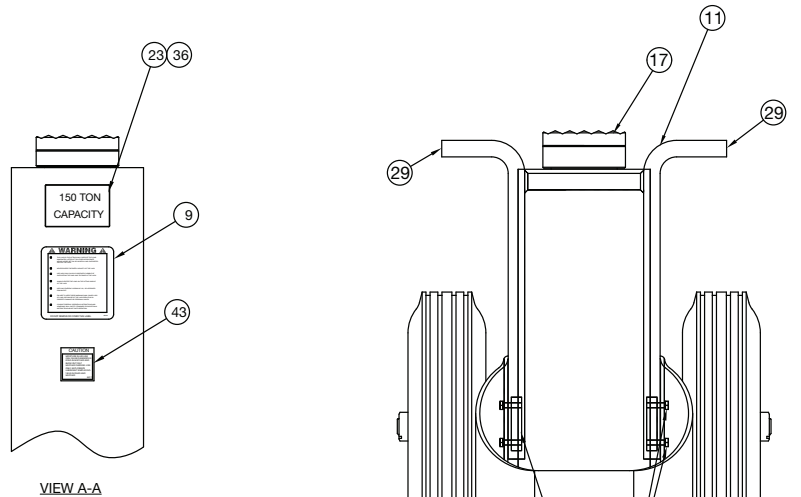


**Figure 1 - Main Assembly JA Models**

**Note:** This illustration is for reference only. The appearance of your unit may differ from unit shown.

**Testing Procedure:**

Load to full rated capacity, hold and check. No drift allowed. Lift 2.75-1.75" @ 1 minute. Lower and check load holding .31" drift max. before load lock off.



Repair Parts List (Refer to figure 1)				
Item	Model		Qty.	Description
	JAI5026	JAI5037		
1	42045SS	41943SS	1	PR Basic Asm (See Fig 3)
2	46460SS	46460SS	1	Subassembly, Pump and Motor (see Figure 4)
4	S88743	S88743	1	Plug Hex O-Ring
6	S85469	S85469	1	Gasket
9	89292	89292	1	Decal, Warning PWR R
10	S69429	S69429	14	Screw 1/4-20 x 3/4" St
11	S42358	N/A	1	Lifting Bar 24" PR
12	S40085	S40085	1	Male Elbow 3/8-3/8"
13	S42363	N/A	4	HCS 5/16-18 x 1.25" Plt.
14	S93942	N/A	4	Lock Washer 5/16"
15	S42365	N/A	2	Nut Plt - Lift Bar
17	S42208	S42208	1	Load Cap PR Long Stm
18	89967	89967	1	Simplex Logo - Large
23	42532SS	42532SS	1	Label 150 Ton Capacity
24	46459	46485	1	Model Label
25	S86027	S86027	1	Control Valve Plate
26	41944SS	41944SS	2	Tire/Rim Assembly
27	S41945	S41945	2	Spacer
28	41961SS	41961SS	1	Handle Assembly (see figure 24)
29	S43021	N/A	2	Square Hole Plug PR
30	S46053	S46053	2	1"-8 Hex Lock Nut
34	41977S	S41978	1	Tube
35	S41983	S41983	1	Screw Shoulder
36	S46359	S46359	2	Decal Overlay
37	S42281	S42281	1	Lower Weldment 5" PR
38	84692	84692	2	SHC 3/8-16 x 1.75"
39	S41779	S41779	1	Air Tubing PR
40	DS1037900SS	DS1037900SS	1	Filter/Lubricator ASM (see figure 21)
41	S86244	S86244	1	Street Elbow
42	S69264	S69264	1	Breather Vent
43	88111	88111	1	Caution Decal

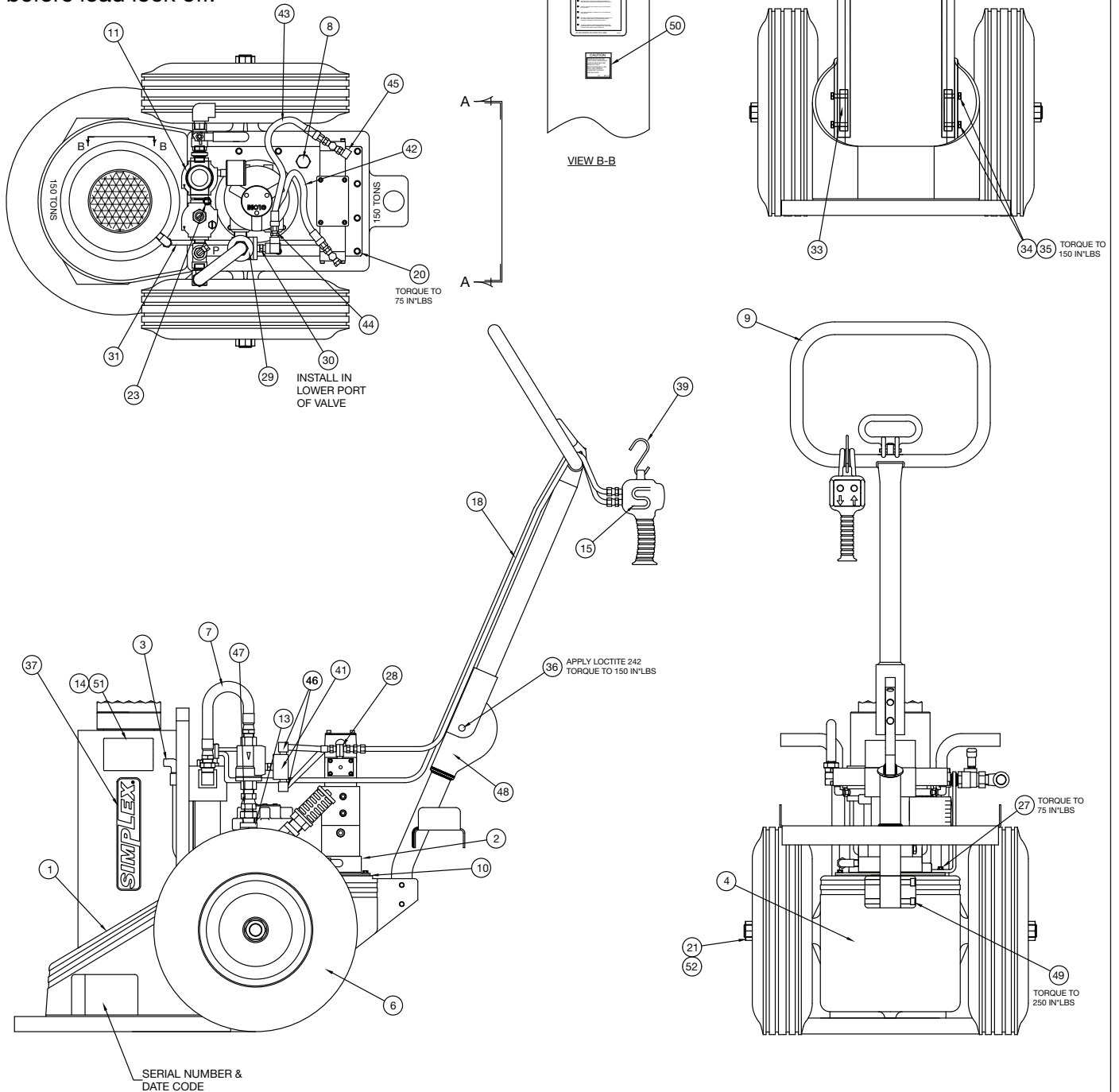
N/A = Not Available.

**Figure 2 - Main Assembly JAS Models**

**Note:** This illustration is for reference only. The appearance of your unit may differ from unit shown.

**Testing Procedure:**

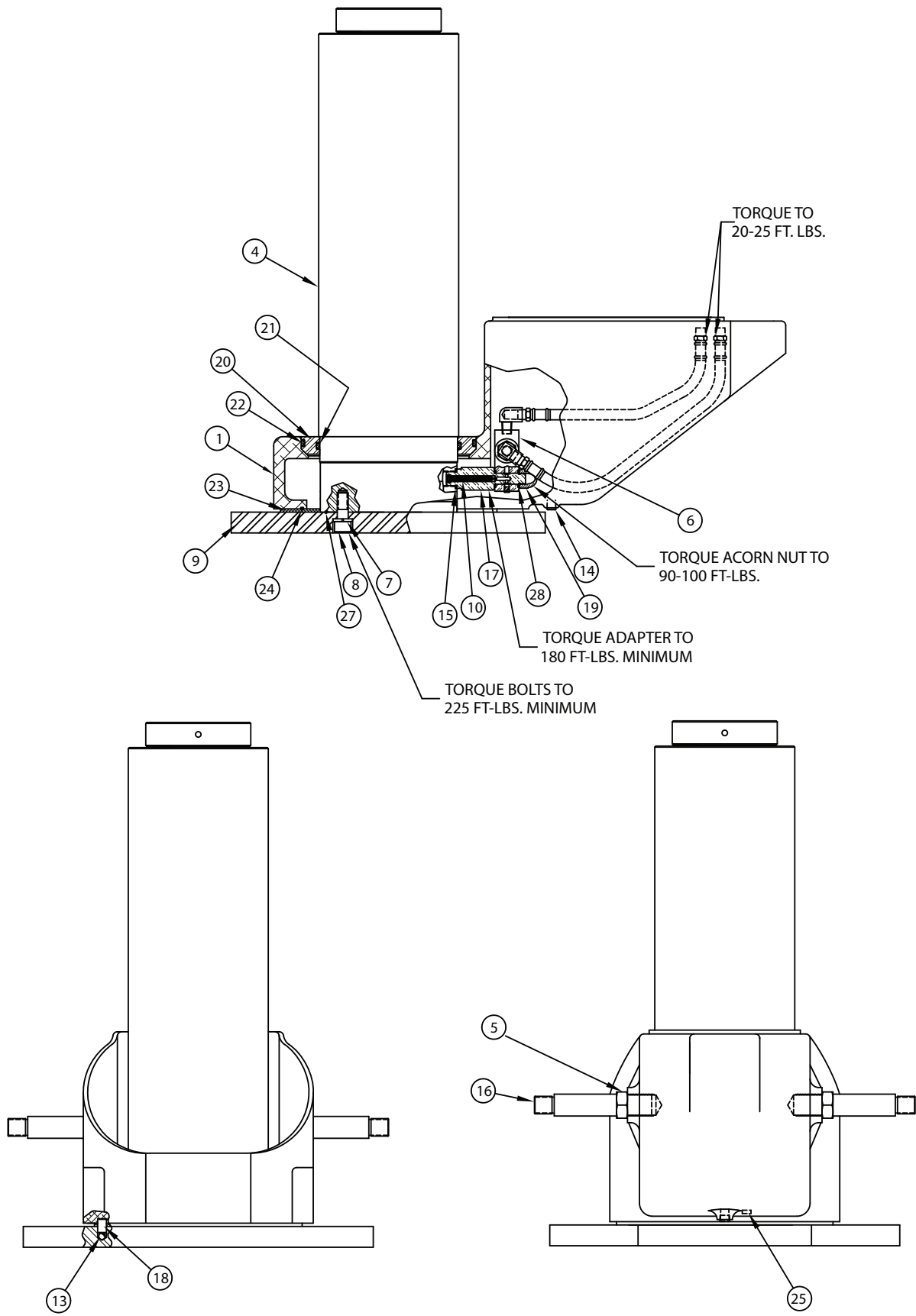
Load the jack to full rated capacity, hold and check. No drift allowed. Lift 2.75-1.75" @ 1 minute. Lower and check load holding .31" drift max. before load lock off.



Repair Parts List (Refer to figure 2)				
Item	Model		Qty.	Description
	JAS15026	JAS15037		
1	42045SS	41943SS	1	PR Basic ASM. (see figure 3)
2	69769SS	69769SS	1	Pump Sub ASM 100T PR (see figure 5)
3	S40085	S40085	1	Male Elbow 3/8-3/8 Ferulok
5	S42208	S42208	1	Load Cap PR Long STM
6	S41944	S41944	2	Semi Pneumatic Tire
7	S41779	S41779	1	Air Tubing Powr Rise
8	S88743	S88743	1	Plug Hex O-Ring
9	41961SS	41961SS	1	Handle ASM (see figure 24)
10	S85469	S85469	1	Reservoir Gasket
11	DS1019900SS	DS1019900SS	1	Filter/Lubricator/Regulator ASM (see figure 22)
12	S43021	NA	2	Square Hole Plug PR
13	S86243	S86243	1	Elbow Male 1/2 NPT Pipe
14	42445	42446	1	Model Label
15	41950SS	41950SS	1	Motor Pendant Air (see figure 23)
16	42532SS	42532SS	1	150 Ton Capacity LBL
18	S41965	S41965	1	Hose-EA.
19	89292	89292	1	Decal, Warning-PWR.RI
20	S69249	S69249	14	HHFCS, 1/4-20 X .625
21	S46053	S46053	2	Hex Lock Nut 1"-8
23	S69264	S69264	1	Breather Vent
24	NA	S42505	1	Hanger 10" Lock Ring
25	NA	S42552	4	SHCS 10-32 X 1/2" SS
26	NA	S93940	4	Lockwasher #10
28	S42968	S42968	2	1/8 Swivel Tee
29	SDS1024660	SDS1024660	1	Air Control Valve
30	S45970	S45970	1	Male Hex Nipple 1/4 - 1/8
31	41977S	S41978	1	Tube
32	S42358	NA	1	Lifting Bar 24" PR
33	S42365	NA	2	Nut PLT - Lift Bar
34	S42363	NA	4	HHCS 5/16-18 X 1.25 PLT
35	S93942	NA	4	5/16" Lock Washer Zinc Plate
36	S41983	S41983	1	Screw Shoulder
37	89967	89967	1	Simplex Logo Large
39	S42367	S42367	1	S-Hook Pendant
41	S44245	S44245	1	Shuttle Valve
42	S43099	S43099	1	Hose 1/4" 10.5LG
43	S43098	S43098	1	Hose 1/4" 12.25LG
44	S42667	S42667	2	Reducer 1/4"-1/8"
45	S42966	S42966	1	1/8" Street Elbow
46	S18970	S18970	2	Elbow 1/4 90Deg STRT
47	S42967	S42967	1	1/2" Straight Swivel
48	S42281	S42281	1	Lower Weldment 5" PR
49	84692	84692	2	SHCS 3/8-16 X 1.75
50	88111	88111	1	Caution Decal
51	S46539	S46539	2	Decal Overlay
52	S41945	S41945	2	Spacer

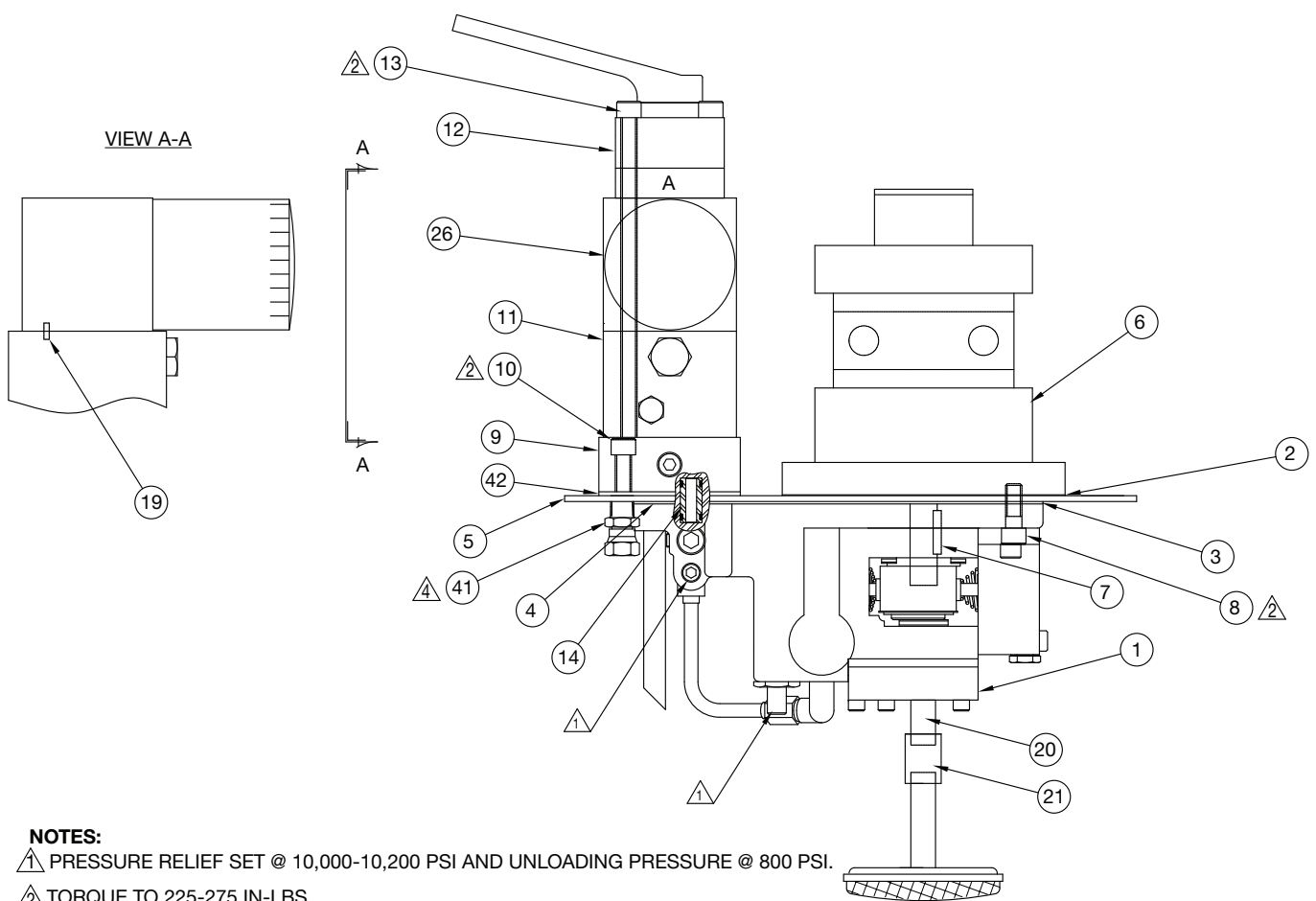
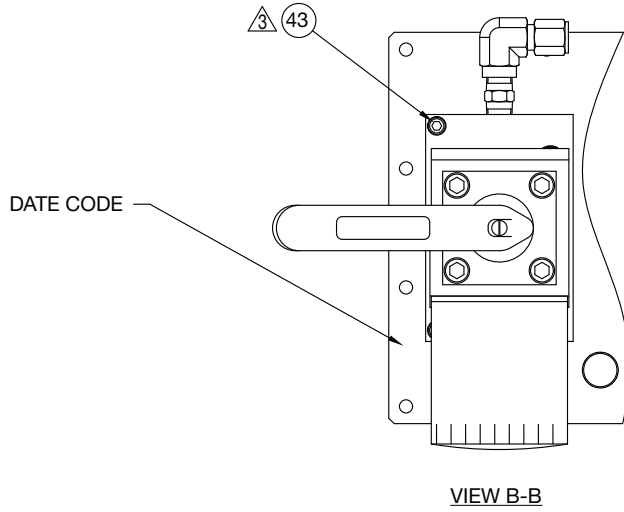
N/A = Not Available.

Figure 3 - 42045SS, 41943SS Pow'r Riser Basic Assembly



Repair Parts List (Refer to figure 3)				
Item	Model		Qty.	Description
	JAS15026 JA15026	JAS15037 JA15037		
<b>BASIC ASSY</b>	<b>42045SS</b>	<b>41943SS</b>		
1	S41886	S41886	1	Housing Mach P. R.
4	S42050SS	41926SS	1	150 Ton Cylinder Assy. (see figure 14)
5	S85477	S85477	2	Jam Nut
6	42353SS	42353SS	1	O.C. Valve and Hoses
7	S93947	S93947	6	Lock Washer 5/8"
8	S93605	S93605	6	SHCS 5/8-11 x 1.5" Lg.
9	S41975	S41975	1	P.R. Base
10	S89754	S89754	1	Screen - 2" Nipple
13	S44968	S44968	2	Rubber Ball 3/8" 70
14	S93950	S93950	1	1/4" Soc Pipe Plug
15	◆	◆	1	Gasket Adapter
16	S41948	S41948	2	Axle Shaft
17	S41947	S41947	1	Adapter O.C. Valve
18	S42275	S42275	2	PR Base Pin
19	S46740	S46740	1	Acorn Nut 5/8-11
20	S41974	S41974	1	Ring 150 Ton
21	◆	◆	1	O-Ring 7-3/4" X 8-1/4"
22	◆	◆	1	O-Ring 9" x 9-1/2"
23	◆	◆	1	Gasket Base
24	◆	◆	1	O-Ring Power Riser
25	66021	66021	1	Magnet
27	◆	◆	1	O-Ring 7" x 7-1/4"
28	S68183	S68183	2	Gasket Plug
◆ Included in 54411 Repair Kit.				

Figure 4 - 46460SS Pump and Motor Sub-Assembly (JA models only)



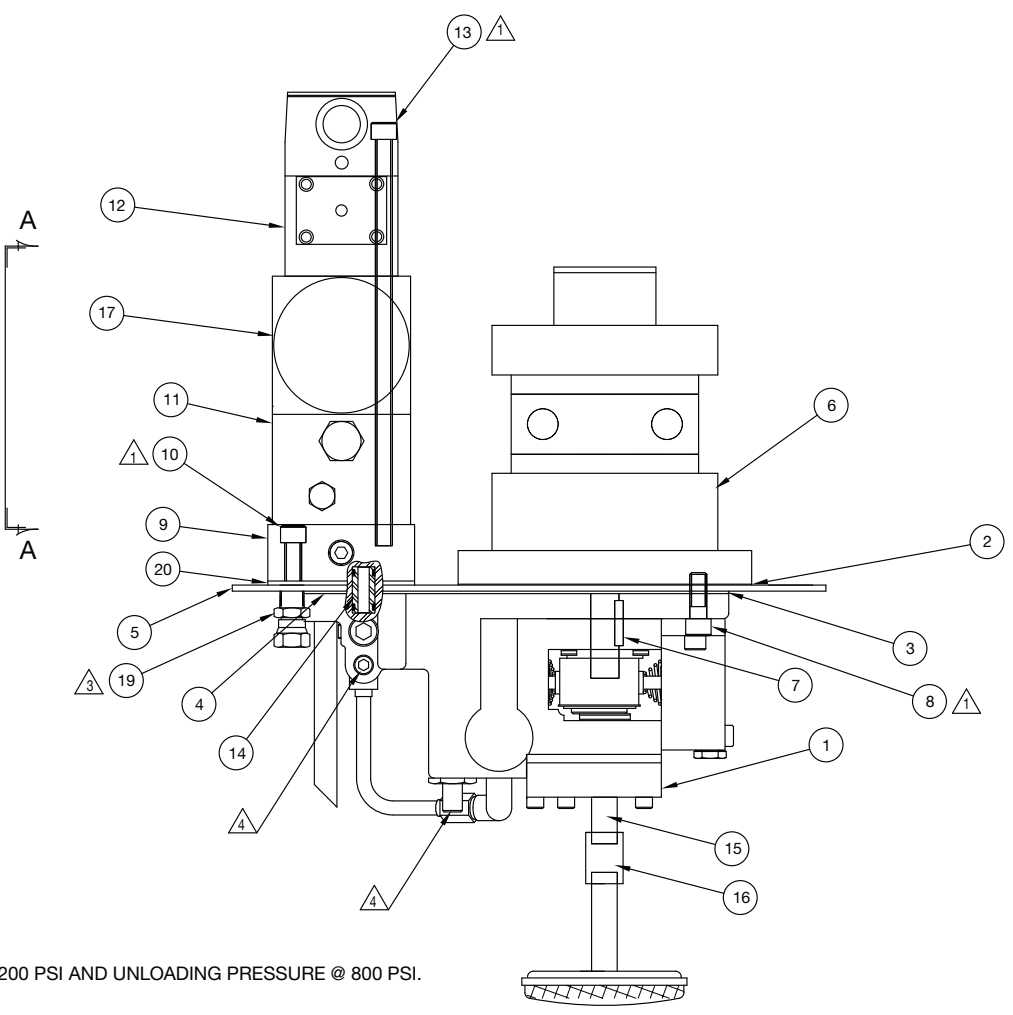
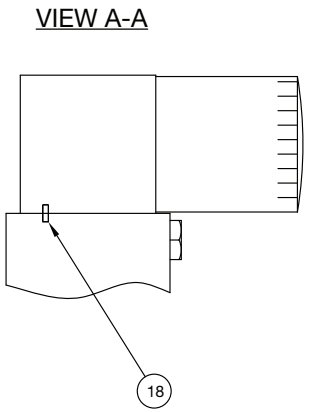
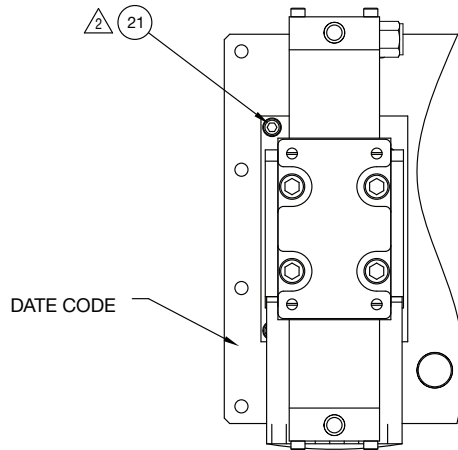
**NOTES:**

- ▲ PRESSURE RELIEF SET @ 10,000-10,200 PSI AND UNLOADING PRESSURE @ 800 PSI.
- ▲ TORQUE TO 225-275 IN-LBS.
- ▲ TORQUE TO 75-100 IN-LBS.
- ▲ TORQUE TO 325-375 IN-LBS.



<b>Repair Parts List (Refer to figure 4)</b>			
<b>Item</b>	<b>Part Number</b>	<b>Qty.</b>	<b>Description</b>
1	(See Fig. 6)	1	Pump Asm
2	★	1	Gasket-Motor
3	★	1	Gasket-Pump @ Motor
4	★	1	Gasket-Pump @ Valve
5	DD6038101S	1	Reservoir Cover Plate
6	♣	1	Air Motor 8AM
7	S69026	1	Pin Dowel 3/16-1
8	S93596	2	SHCS 3/8-16 x 1-1/4
9	(See Fig. 20)	1	Manifold Asm NPR
10	S86184	3	SHCS 3/8-16 x 1-1/2"
11	(See Fig. 19)	1	Locking Valve w/relief
12	(See Fig. 15)	1	Control Valve Asm.
13	S42383	4	SHCS 3/8-16 x 8.0"
14	(See Fig. 12)	1	Adapter Assy.
19	561604	1	Roll Pin 1/8 x 3/8" Lg.
20	S69442	1	Nipple 1/4 NPT x 3"
21	S80241	1	Pipe Coupling 1/4"
26	(See Fig. 11)	1	Filter Block Asm
41	S41964	2	Swivel Fitting
42	DD6106037S	1	Valve Gasket
43	93584	2	SHCS, 1/4-20 x 1.25" Lg
★ Included in S54177 Repair Kit.			
♣ 6028099 Motor Vane Repair Kit			

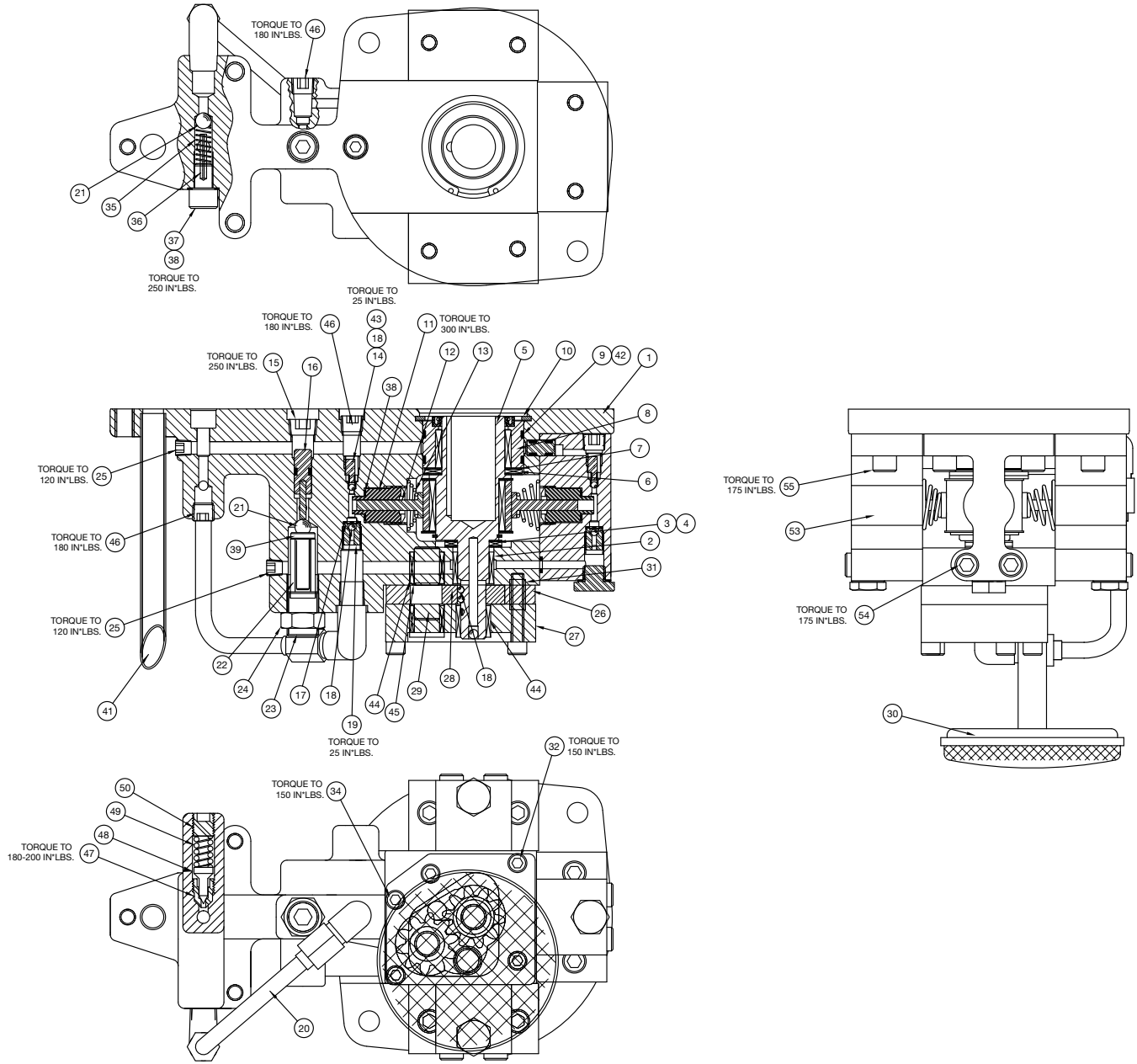
Figure 5 - 69769SS Pump and Motor Sub-Assembly (JAS models only)



- NOTES:**
- △ TORQUE TO 225-275 IN-LBS.
  - △ TORQUE TO 75-100 IN-LBS.
  - △ TORQUE TO 325-375 IN-LBS.
  - △ PRESSURE RELIEF SET @ 10,000-10,200 PSI AND UNLOADING PRESSURE @ 800 PSI.

<b>Repair Parts List (Refer to figure 5)</b>			
<b>Item</b>	<b>Part Number</b>	<b>Qty.</b>	<b>Description</b>
1	(See Fig. 6)	1	Pump ASM
2	★	1	Gasket-Motor
3	★	1	Gasket-Pump Motor
4	★	1	Gasket-Pump @ Valve
5	DD6038101S	1	Plate, Reservoir Cover Pow'r Riser
6	♣	1	Air Motor 8AMNRV28A
7	S69026	1	Pin, Dowel 3/16 1" Long
8	S93596	2	SHCS 3/8-16 X 1-1/4
9	(See Fig. 20)	1	Manifold ASM NPR
10	S86184	3	SHCS 3/8-16 X 1.5
11	(See Fig. 19)	1	Locking VLVE W/REL
12	(See Fig. 16)	1	3P4wm VLV. ASM.AIR
13	S42737	4	SHCS 3/8-16 X 9.0
14	(See Fig. 12)	1	Adapter Assy.
15	S69442	1	Nipple 1/4 NPT X 1.5L
16	S80241	1	Pipe Coupling 1/4
17	(See Fig. 11)	1	Filter Block ASM
18	561604	2	Spring Pin
19	S41964	2	Swivel Fitting
20	DD6106037S	1	Gasket, Valve Pow'r Riser
21	93584	2	1/4-20 SHCS 1.25 LG
★ Included in S54177 Repair Kit.			
♣ 6028099 Motor Vane Repair Kit			

Figure 6 - 69445SS Pump Assembly

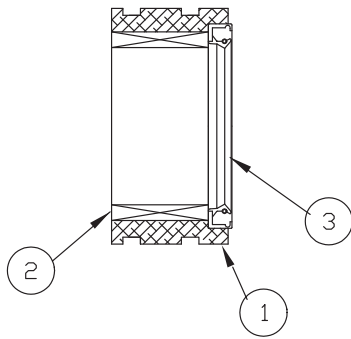


**Repair Parts List (Refer to figure 6)**

Item	Part Number	Qty.	Description	Item	Part Number	Qty.	Description
1	S44917	1	Pump Body 4 Piston	28	68855S	1	Gear Set
2	S68360	1	Bearing, Roller	29	S68850	1	Shaft-Idler
3	S66033	1	Thrust Bearing	30	S68884	1	Screen
4	S66474	2	Thrust Washer	31	S68922	2	Tube-Guide .22
5	(See Fig. 9)	1	Eccentric Shaft Assembly	32	S68255	4	SHCS 1/4-28 x 1-3/4"
6	S66106	1	Thrust Bearing	34	89148	1	SHCS 1/4-28 x 1-1/2"
7	S66108	2	Thrust Washer	35	S68225	1	Spring
8	(See Fig. 7)	1	Adapter-Shaft Asm.	36	S81332	1	Roll Pin 1/8 x 15/16"
9	★	2	O-Ring 1-7/8 x 2" Ure	37	S68226	1	Screw, Ball Stop
10	S68978	1	Retaining Ring	38	S85726	2	Gasket 25/64 x 19/32"
11	S68915	1	Adaptor .210 Dia.	39	S43673	1	Spring Cap Unload Valve
12	S68830	1	Piston .210 Dia.	41	S68569	1	Tube Return
13	S68340	1	Spring, Piston	42	★	2	Shaft Adp Backup Was.
14	S68810	1	Ball Stop	43	S66042	1	Spring
15	S93950	1	1/4" Soc Pipe Plug	44	S68891	3	Bearing
16	(See Fig. 8)	1	Unloading Piston Assy	45	S68892	1	Ring-Retaining
17	S66043	1	Ball Retainer	46	S81093	3	Pipe Plug 1/8" Flush
18	S90906	5	Ball 1/8"	47	▲	1	Seat - Ext Relief
19	S66046	1	Intake Seat	48	▲	1	Cone - Ext Relief
20	68851SS	1	Tube Asm	49	▲	1	Spring - Relief Valve
21	S91701	2	Ball 5/16"	50	S66083	1	Relief Valve Adj. Screw
22	S43671	1	Unloading Spring	53	68832SS	3	Piston Blk .210
23	S43674	1	Set Screw Unloading Valve	54	69392	6	SHCS 5/16-24 x 1.75"
24	S43675	1	Hex Nut Unloading Valve	55	S82687	6	SHCS 5/16-24 x 5/8"
25	S97641	2	1/16" Soc Pipe Plug				
27	S68849	1	Plate-Bottom				

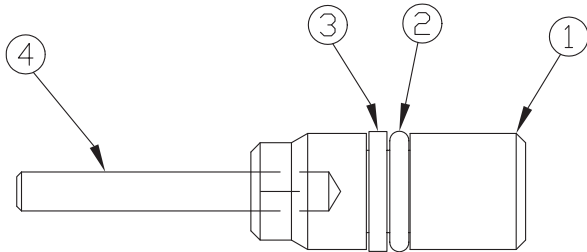
★ Included in S54177 Repair Kit. ▲ Included in 55057 Relief Kit.

Figure 7 - 68829SS Adapt-Shaft Assembly



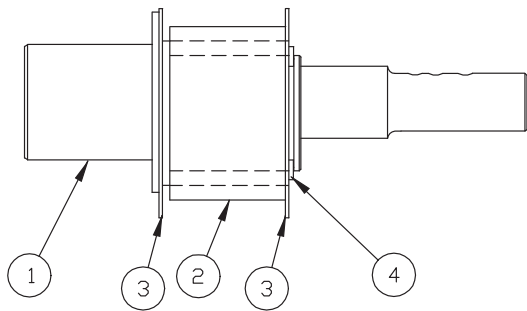
Repair Parts List (Refer to figure 7)			
Item	Part Number	Qty.	Description
1	S68912	1	Adapter Shaft
2	S66030	1	Bearing
3	★	1	Seal
★Included in Repair Kit S54177.			

Figure 8 - 43766SS Unloading Piston Assembly



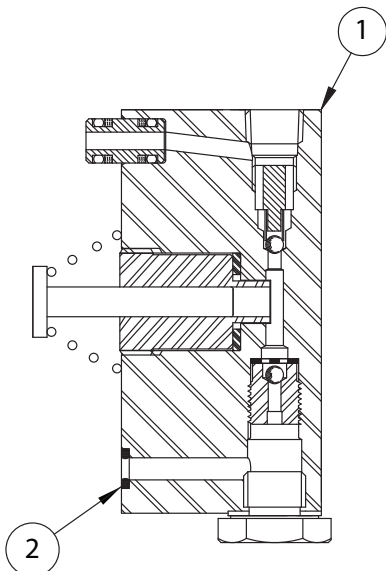
Repair Parts List (Refer to figure 8)			
Item	Part Number	Qty.	Description
1	S43765	1	Unload Piston
2	S5602009	1	O-Ring
3	S43768	1	Back-Up Washer
4	S43686	1	Roll Pin

Figure 9 - 68906SS Eccentric Shaft Assembly



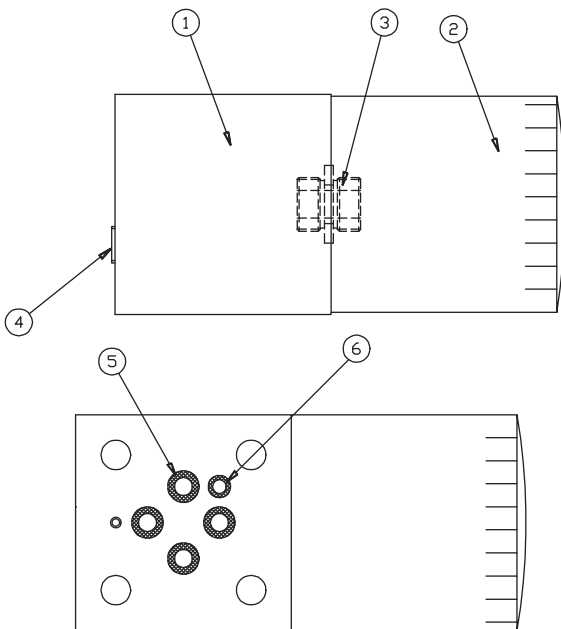
Repair Parts List (Refer to figure 9)			
Item	Part Number	Qty.	Description
1	S68907	1	Eccentric Shaft
2	68818SS	1	Bearing
3	S69475	2	Bearing Washer
4	S67863	1	Retaining Ring
5	S90548	1	Ball

Figure 10 - 68832SS Piston Block Assembly



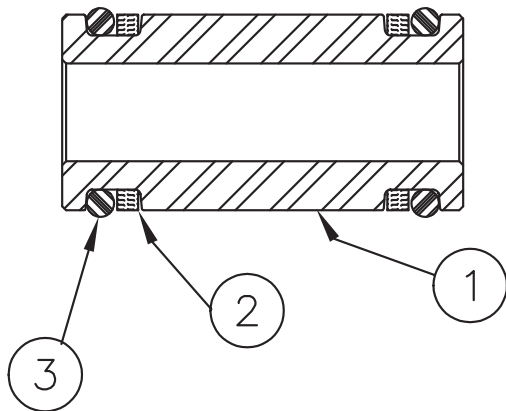
Repair Parts List (Refer to figure 10)			
Item	Part Number	Qty.	Description
1	68832SS	1	Piston Block Assembly (Includes item 2)
2	★	1	O-Ring 3/16 x 5/16"
★ Included in Repair Kit 54177. <b>Note:</b> Piston block components are shown in Fig. 10 for reference only. Order complete 68832SS piston block assembly if replacement is required. Piston block assembly is not repairable.			

Figure 11 - 69740USS Filter Block Assembly



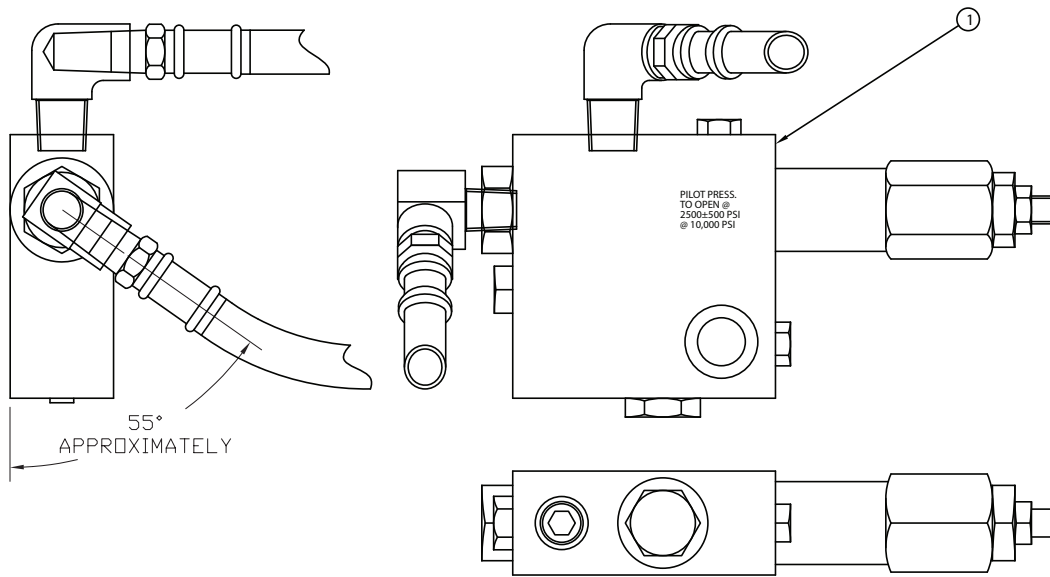
Repair Parts List (Refer to figure 11)			
Item	Part Number	Qty.	Description
1	S69546	1	Filter Block
2	S69670	1	Oil Filter Power Pump
3	S69144	1	Adapter Filter
4	S93950	2	1/4" Soc Pipe Plug
5	S56020112	4	O-Ring 5/16 x 7/16" URE
6	S5602008	1	O-Ring 3/16 x 5/16"

Figure 12 - 68963SS Adapter Assembly



Repair Parts List (Refer to figure 12)			
Item	Part Number	Qty.	Description
1	S88073	1	Valve Adapter
2	★ S65881	2	B-U Ring
3	S5602012	2	O-ring 3/8 x 1/2"
★Included in Repair Kit S54177.			

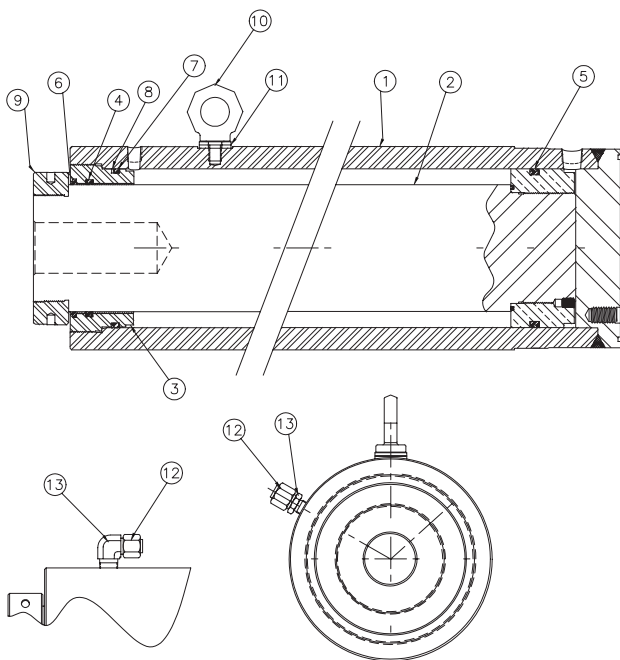
Figure 13 - 42353SS Over-Center Valve Subassembly



Repair Parts List (Refer to figure 13)			
Item	Part Number	Qty.	Description
1	42353SS	1	Valve, Over-Center

**Note:** Item 1 includes OC valve subassembly, elbows and hydraulic hoses. Items not sold separately. Order complete 42353SS OC valve assembly if replacement is required. Valve is not repairable.

Figure 14 - S42050SS, 41926SS Cylinder Assembly



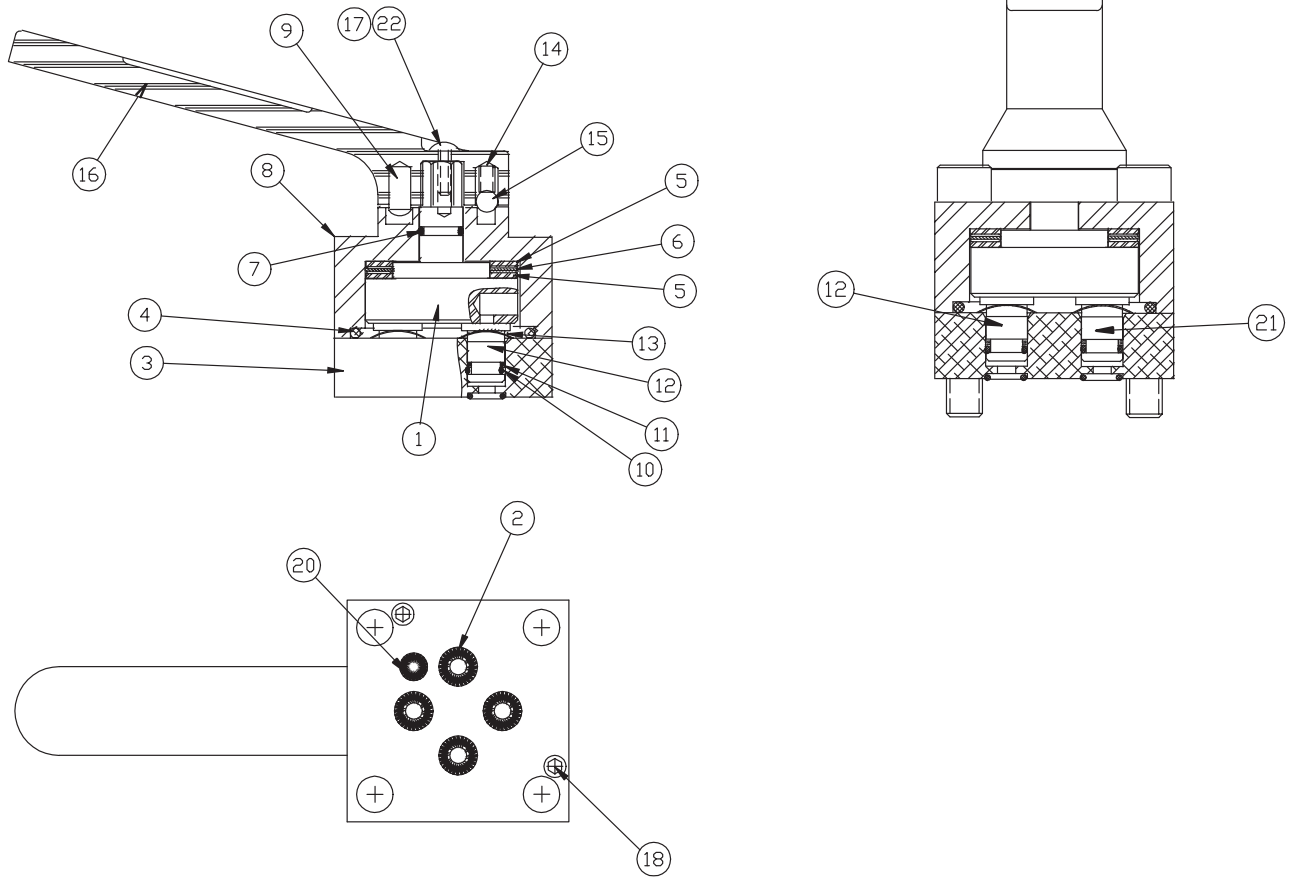
View for S42050SS      View for 41926SS

Repair Parts List (Refer to figure 14)				
Model	JA15026 JAS15026	JA15037 JAS15037		
Item	Asm. S42050SS	Asm. 41926SS	Qty.	Description
1	N/A	N/A	1	Cylinder Weldment
2	42051SS	41930SS	1	Piston Rod Asm.
3	41933SS	41933SS	1	Head Gland
4	*	*	1	T-Seal Rod 5" Dia
5	*	*	1	T-Seal Piston 6-1/4"
6	*	*	1	Wiper 5" Rod Dia
7	*	*	1	O-Ring 6" x 6-1/4"
8	*	*	1	B-U Washer
9	S41934	S41934	1	Ring
10	N/A	S43308	1	Swivel Eye Bolt 1/2"
11	N/A	S44888	1	Washer Eyebolt
12	S45664	S45664	1	O-Ring Face Seal Plug
13	S44865	S45666	1	O-Ring Ftg. 3/8" NPT

\* Included in 54403SS Repair Kit. N/A = Not Available.



Figure 15 - 69101SS 4-Way Manual Valve Subassembly (JA models only)

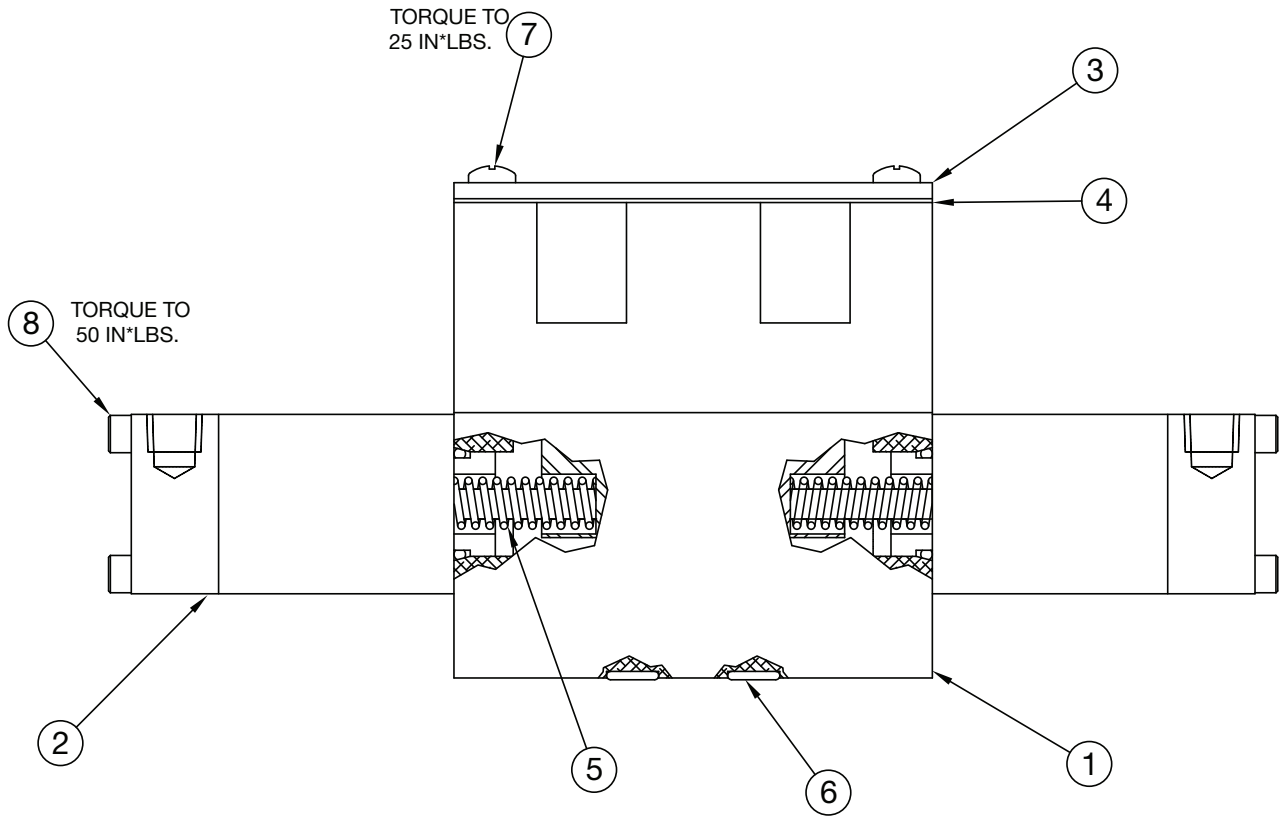


**Repair Parts List (Refer to figure 15)**

Item	Part Number	Qty.	Description	Item	Part Number	Qty.	Description
1	S43762	1	Valve Rotor	12	S68029	1	Shear Seal
2	*	4	O-Ring	13	S68028	3	Spring Washer
3	S68180	1	Subplate - Valve	14	S68025	1	Detent Spring
4	*	1	O-Ring	15	92549	1	Ball
5	S68026	2	Thrust Washer	16	S69091	1	Valve Handle
6	S68155	1	Thrust Bearing	17	S44595	1	Screw
7	*	1	O-Ring	18	S85317	2	Screw
8	S69135	1	Upper Valve Block	N/S	S93598	4	Screw
9	S93804	1	Drive Lok Pin	20	S5602008	1	O-Ring
10	*	3	O-Ring	21	S68181	2	Shear Seal
11	*	3	Washer	22	SY0010765	1	Lockwasher

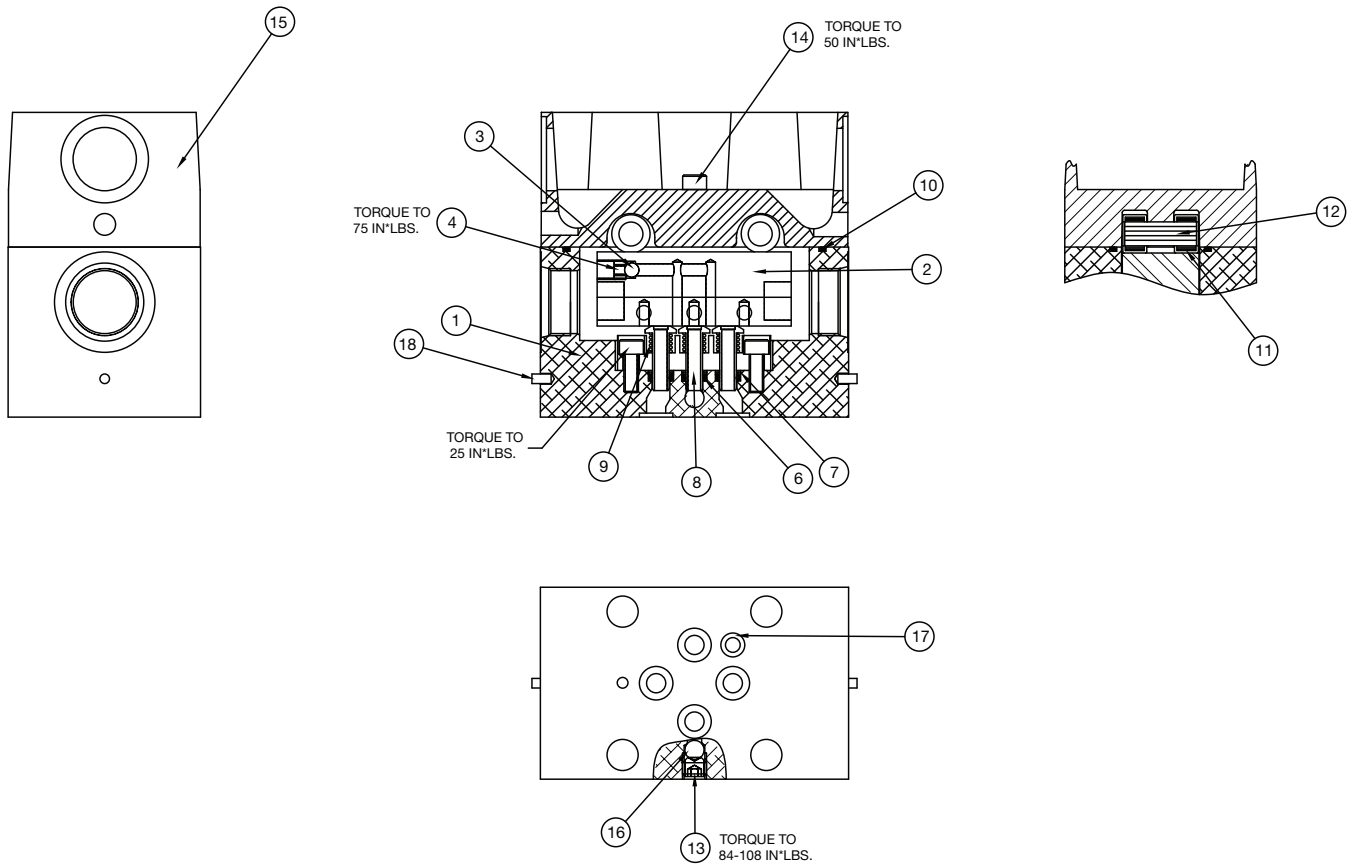
N/S = Not Shown. \* Included in Valve Kit 54490.

Figure 16 - 41949SS 3P4WM Air Valve Assembly (JAS models only)



Repair Parts List (Refer to figure 16)			
Item	Part Number	Qty.	Description
1	(See Fig. 17)	1	Valve Assembly TC
2	(See Fig. 18)	2	Air CYL ASM
3	S68388	1	Cover, Valve
4	S68389	1	Gasket CVR
5	S68711	2	Spring
6	★	4	O-Ring 5/16 x 7/16 URE
7	S98250	4	Screw, Fill HD Mach
8	S41959	8	SHCS #10-24 x 3.25"
★Included in Valve Kit 54491.			

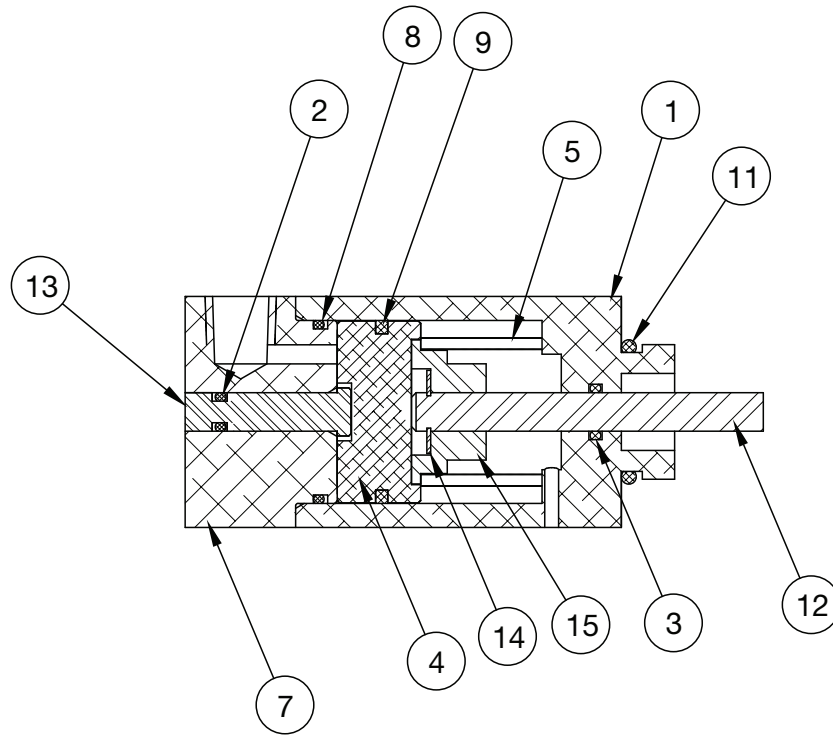
Figure 17 - 68710SS Valve Assembly TC (JAS models only)



Repair Parts List (Refer to figure 17)			
Item	Part Number	Qty.	Description
1	S68708	1	Body-Valve
2	S68709	1	Slider Tandem Center
3	S90548	1	3/16" Dia Ball
4	S40254	1	Set Screw 1/4 - 28 x 1/4 Cup
6	★	3	O-Ring
7	★	3	Back Up Washer
8	S68383	3	Shear Seal
9	S68384	3	Spring
10	S5602038	1	O-Ring
11	S68385	4	Bearing Roller 5/16 x 1/2 x 5/16 Wide
12	S68390	2	Pin Bearing
13	94418	1	Set Screw 5/16 - 18 x 1/4 Cup
14	S68264	2	SHCS #10 - 32 x 1" LG
15	S68381	1	Plate-Top Machining
16	92549	1	1/4" Dia. Ball
17	★	1	O-Ring (0.19 x 0.31 x 0.06) Buna
18	S69636	2	Roll Pin 1/8 x 1/4 LG

★Included in Valve Kit 54491.

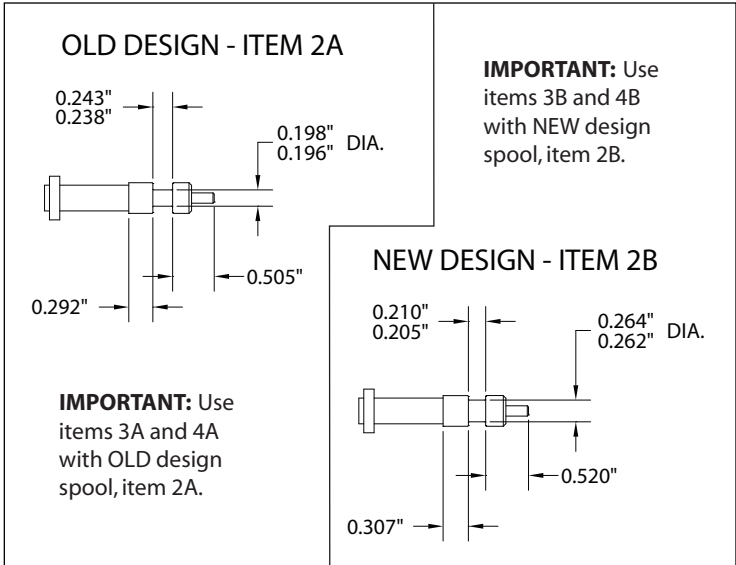
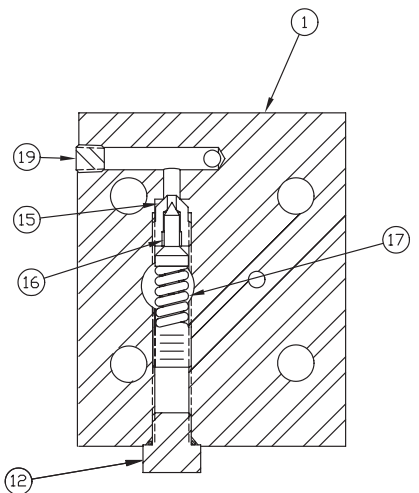
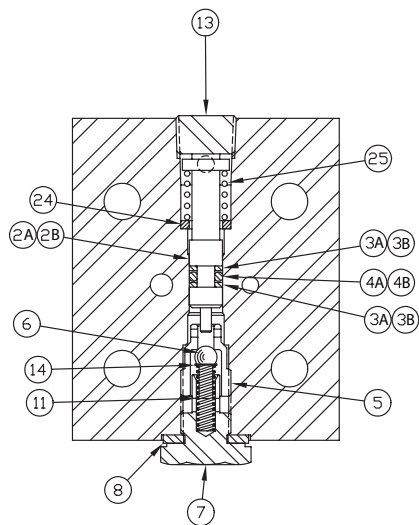
Figure 18 - 41954SS Air Cylinder Assembly (JAS models only)



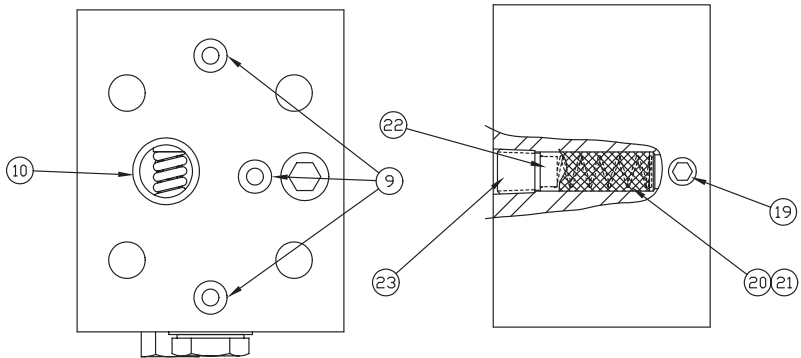
Repair Parts List (Refer to figure 18)			
Item	Part Number	Qty.	Description
1	S42744	1	Air Cylinder Body ZA
2	S5602006	1	O-Ring 0.12 x 0.25 x 0.06
3	S5602010	1	O-Ring
4	S42747	1	Air Cylinder Piston ZA
5	S42749	1	Spring Air CYL
7	S41956	1	End Cap
8	S5602023	1	O-Ring
9	SDD2957141	1	Ring Glide 1 3/16"
11	S5603910	1	O-Ring
12	S42746	1	Push Pin Air Valve
13	S41958	1	Override Pin
14	S42750	1	E-Ring 1/4" Shaft
15	S42748	1	Spring Plate Air VLV

Figure 19 - 42480SS Locking Valve Subassembly (with relief)

**SPOOL AND SEAL REPLACEMENT INFORMATION**



**Note:** Old design spool (2A) must be replaced with new design spool (2B) if it is worn or damaged. Old design spool (2A) is no longer available.

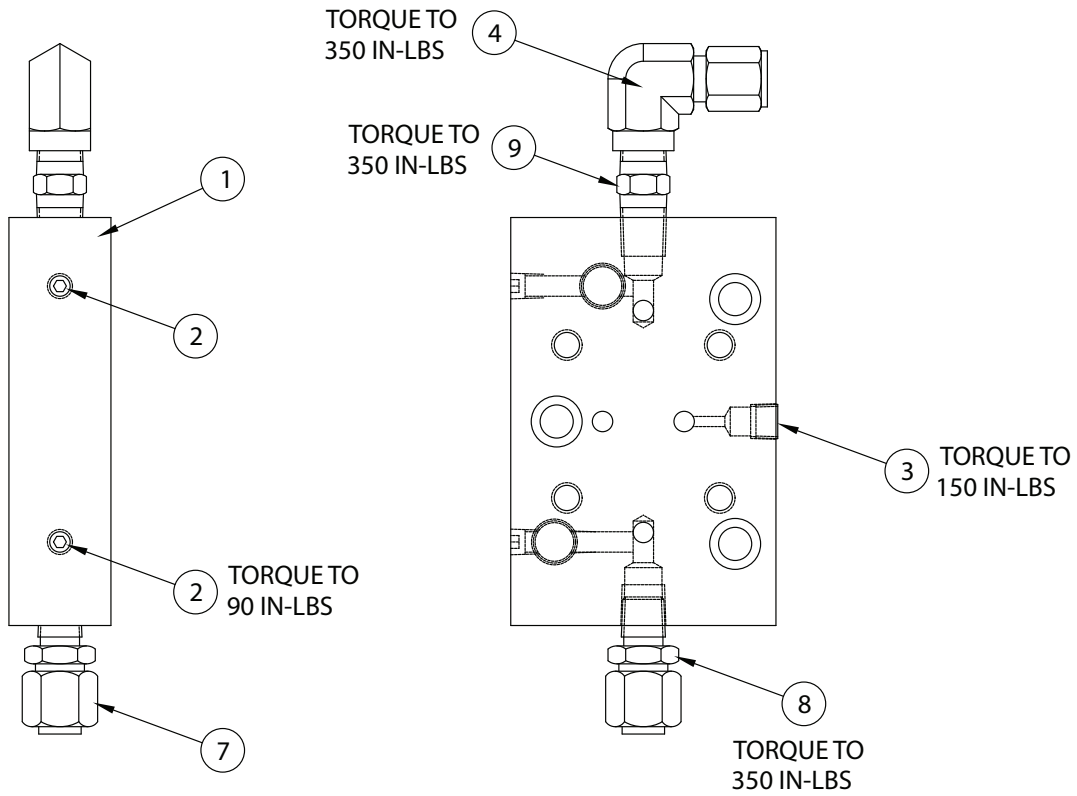


**Repair Parts List (Refer to figure 19)**

Item	Part Number	Qty.	Description	Item	Part Number	Qty.	Description
1	S42307	1	Locking Valve Body - Relief	12	S68258	1	Plug SAE #4
2A	(not available)	1	Spool Piston (old design)	13	S84084	1	Pipe Plug 3/8" NPT Flush
2B	S42727	1	Spool Piston (new design)	14	S69870	1	Spring Eyelet Lock
3A	S5608106	2	Backup Washer 8-106	15	▲	1	Seat - Ext Relief
3B	❖*	2	Backup Washer TEF -010	16	▲	1	Cone - Ext Relief
4A	S5602106	1	O-Ring 3/16 x 3/8"	17	▲	1	Spring - Relief Valve
4B	❖*	1	O-Ring 1/4 x 3/8"	18	S66083	1	Relief Valve Adjusting Scr.
5	S68590	1	Seat	19	40049	3	1/16" Pipe Plug - Flush
6	S92526	1	Ball 9/32"	20	S69518	1	Screen O.C. Valve
7	S69508	1	Plug - Adapt P.R. Lock	21	S42423	1	Screen O.C. Valve
8	S68183	1	Gasket - Plug	22	S69517	1	Screen Cap
9	*	3	O-Ring 1/4 x 3/8" Ureth	23	46509	1	Pipe Plug 1/4" Flush
10	*	1	O-Ring 5/8 x 3/4" Ureth	24	S42726	1	Washer PR Lock Block
11	S68870	1	Compression Spring	25	S68871	1	Compression Spring

▲ Included in 55057 Relief Kit. ❖ Included with item 2B \* Included in 54686 Seal Kit

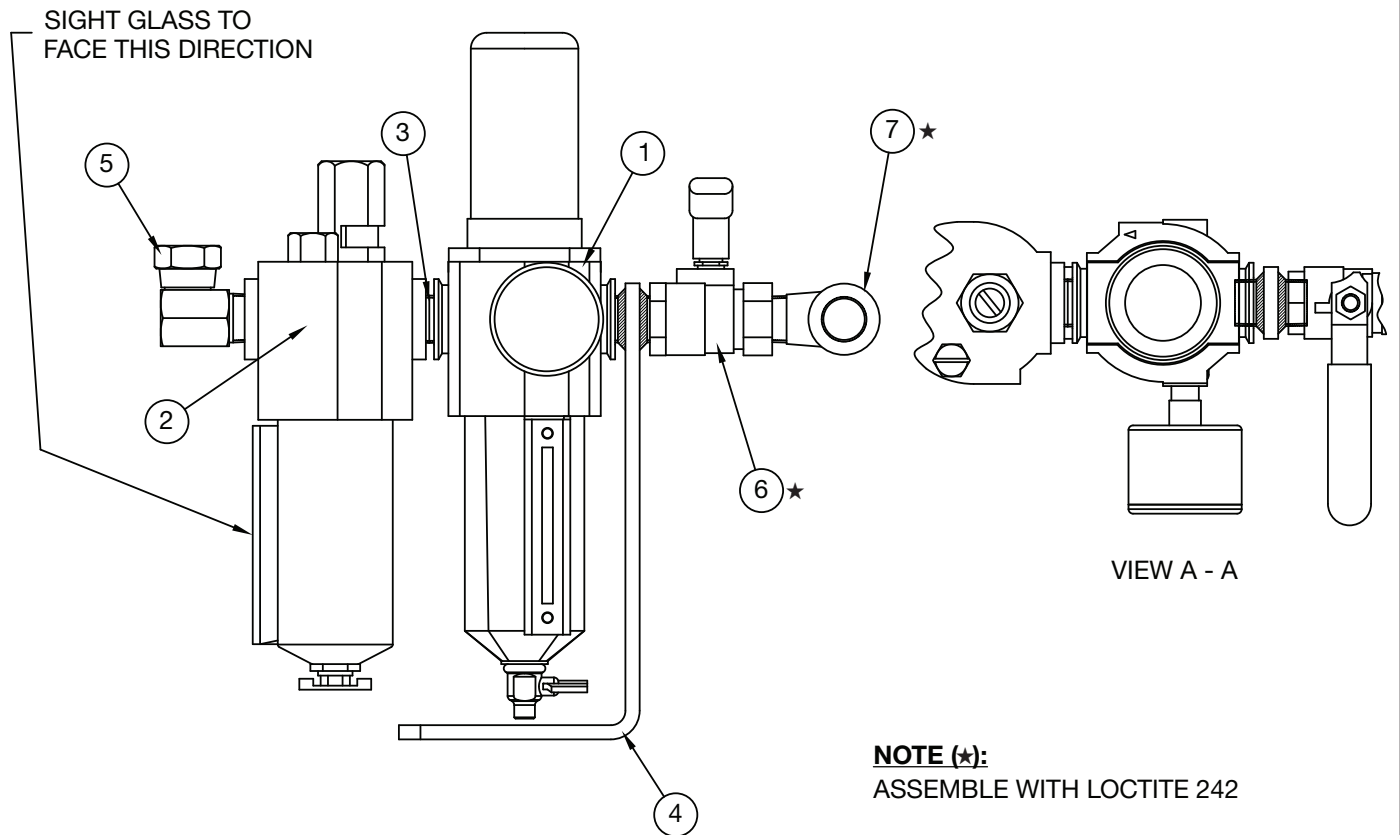
Figure 20 - 69749SS Manifold Assembly



**Repair Parts List (Refer to figure 20)**

Item	Part Number	Qty.	Description	Item	Part Number	Qty.	Description
1	S69429	1	Manifold Pow'r Riser	7	S45664	1	O-Ring Face Seal Plug
2	40049	2	1/16" Pipe Plug - Flush	8	S45663	1	O-Ring Face Tube Ftg 1/4"
3	S81093	1	Pipe Plug 1/8" Flush	9	S4100067	1	Nipple 1/4"
4	S43166	1	Elbow 90 3/8 - 1/4"				

Figure 21 - DS1037900SS Filer/Lubricator

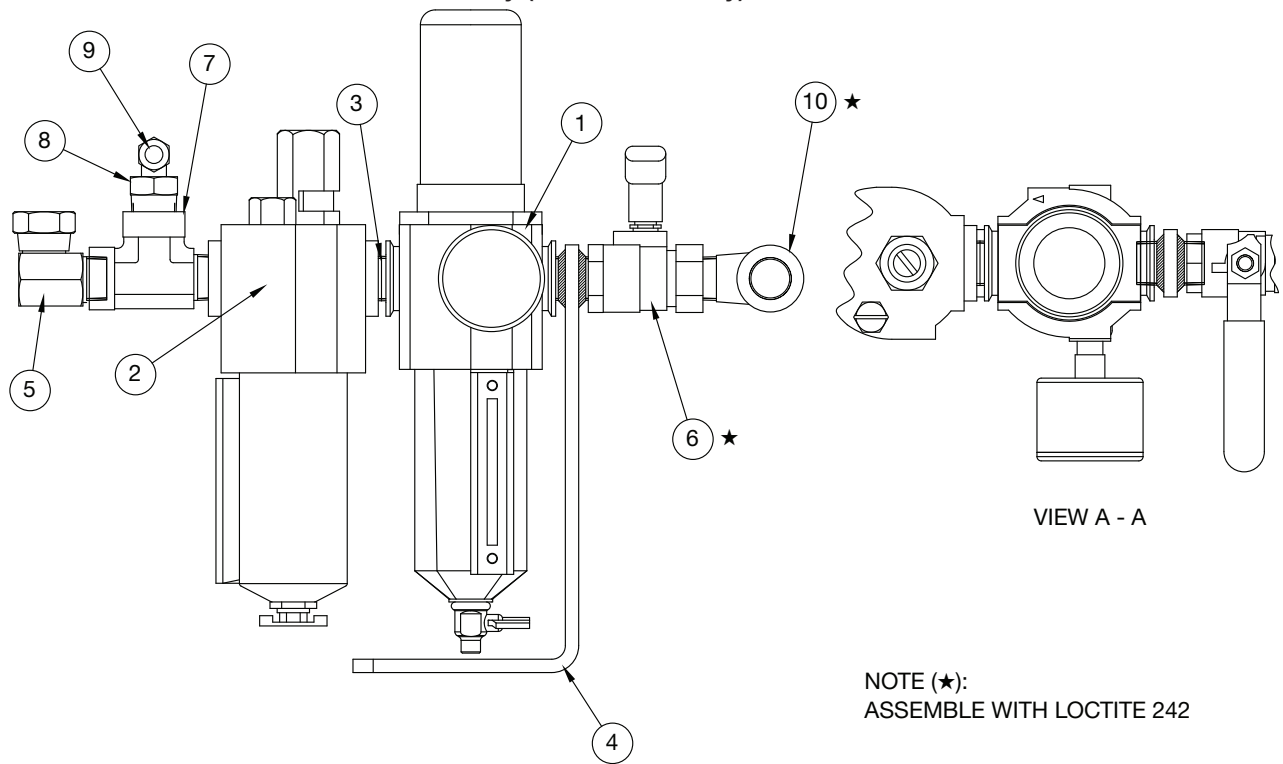


**NOTE (\*):**  
ASSEMBLE WITH LOCTITE 242

**Repair Parts List (Refer to figure 21)**

Item	Part Number	Qty.	Description	Item	Part Number	Qty.	Description
1	SDS1018118	1	Air Filter	5	S41763	1	Swivel Male 1/2 NPTF
2	S86242	1	Air Lubricator	6	S85851	1	Air Valve
3	S69998	1	Pipe Nipple	7	S86244	1	Street Elbow
4	S42511	1	Bracket Weldment				

Figure 22 - DS1019900SS Filter Lube Assembly (JAS models only)



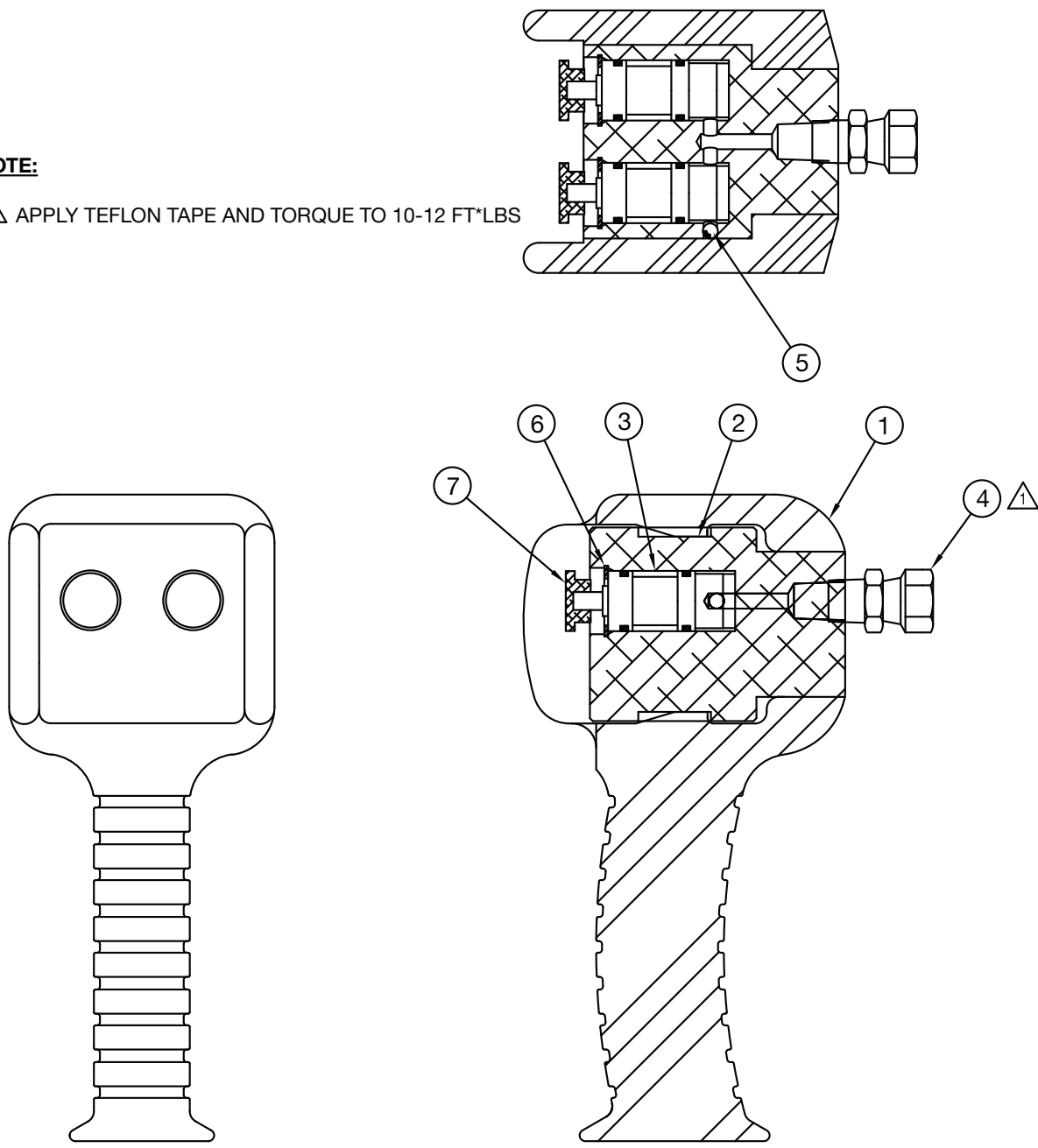
Repair Parts List (Refer to figure 22)			
Item	Part Number	Qty.	Description
1	SDS1018118	1	Filter/Regulator
2	S86242	1	Air Lubricator
3	S69998	1	Pipe Nipple 1/2" BRS
4	S42511	1	BRCKT/Nipple WELDMT
5	S41763	1	Swivel Male 1/2 NPTF
6	S85851	1	Air Valve
7	S42378	1	Male Run Tee 1/2
8	S42377	1	Pipe ADP 1/2 - 1/8
9	S42380	1	Swivel ADP 1/8 90
10	S86244	1	Street Elbow



Figure 23 - DS1019900SS Filter Lube Assembly (JAS models only)

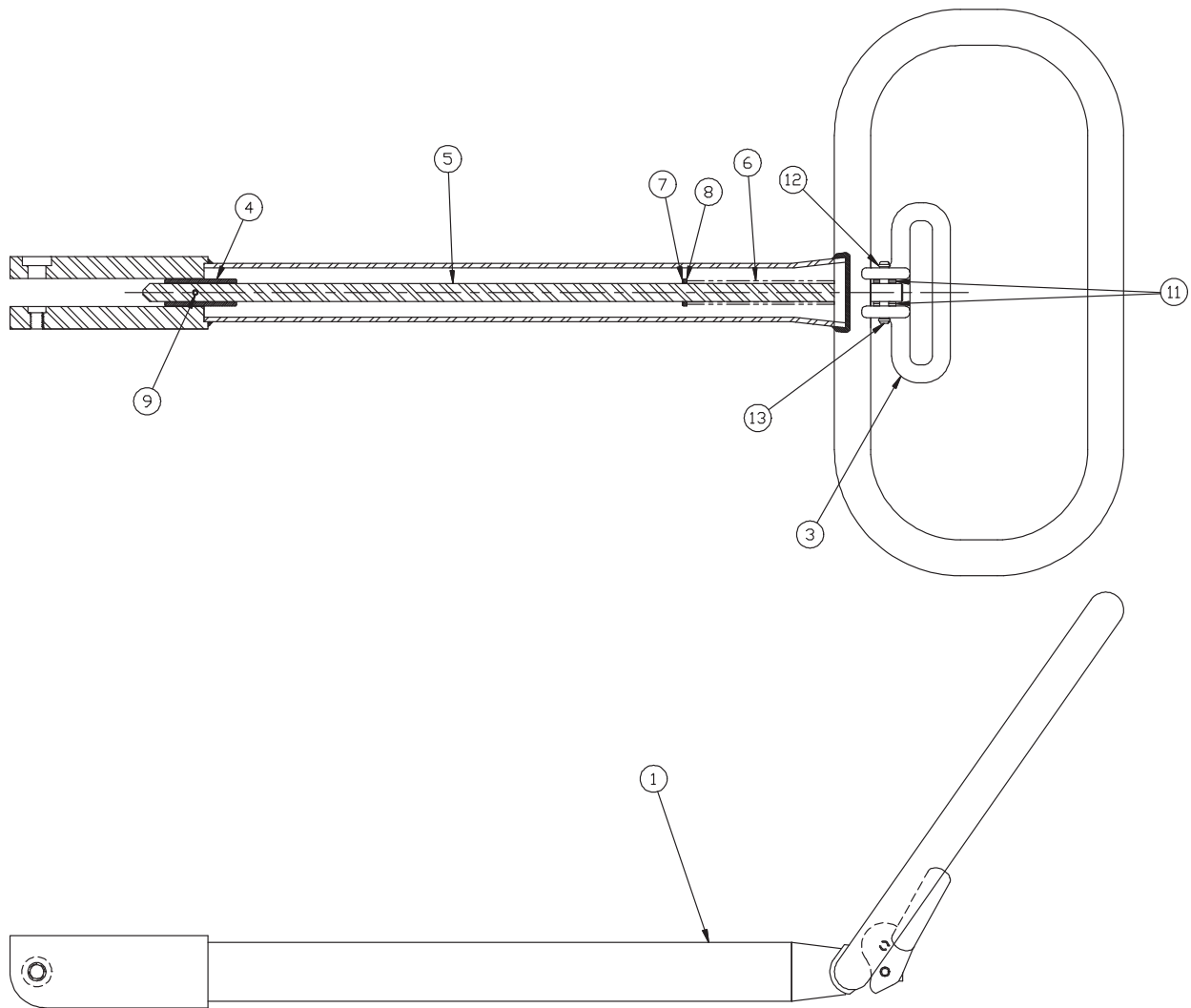
**NOTE:**

⚠️ APPLY TEFLON TAPE AND TORQUE TO 10-12 FT\*LBS



Repair Parts List (Refer to figure 23)			
Item	Part Number	Qty.	Description
1	S41968	1	Pendant Body
2	S41969	1	Block Air Pendant
3	S41963	2	Cartridge - Air
4	S42381	3	Swivel ADP 1/8
5	S606961	3	5/32" Dia. Ball
6	S68808	2	Retaining Ring
7	S41970	2	Cartridge Cap

Figure 24 - 41961SS Upper Handle Assembly



**Repair Parts List (Refer to figure 24)**

Item	Part Number	Qty.	Description	Item	Part Number	Qty.	Description
1	S41595	1	Upper Weldment	8	S41614	1	Washer 9/16" ID x 3/32"
3	S42368	1	Handle Lock Lever	9	S42497	1	Roll Pin 5/32 x 7/8"
4	S41600	1	Sleeve	11	S88429	4	Washer SS 1/4"
5	S41601	1	Handle Rod	12	S42340	4	Pin Ring
6	S41602	1	Spring . 656 x 9.50"	13	S42338	2	Pin Handle Lever
7	S41613	1	E-Ring .8/.82 x .042				



N86 W12500 Westbrook Crossing  
 Menomonee Falls, WI 53051  
 Phone - USA Only: 1 (800) 323-9114  
 Phone - Inside/Outside USA: 1 (262) 293-1575  
 Fax: 1 (262) 597-1127  
[www.tksimplex.com](http://www.tksimplex.com)