



Repair Parts Sheet

Pow'r Riser Lifting Jacks PR Series - 200 Ton Air Models

TD164 Rev. C 11/2021

For Date Codes Beginning with the Letter "B"

To Protect Your Warranty, Use Only SIMPLEX Hydraulic Oil.

Simplex recommends that all kit components be installed to insure optimum performance of the repaired product.

Note: This illustration is for reference only.
The appearance of your unit may differ from
the unit shown.

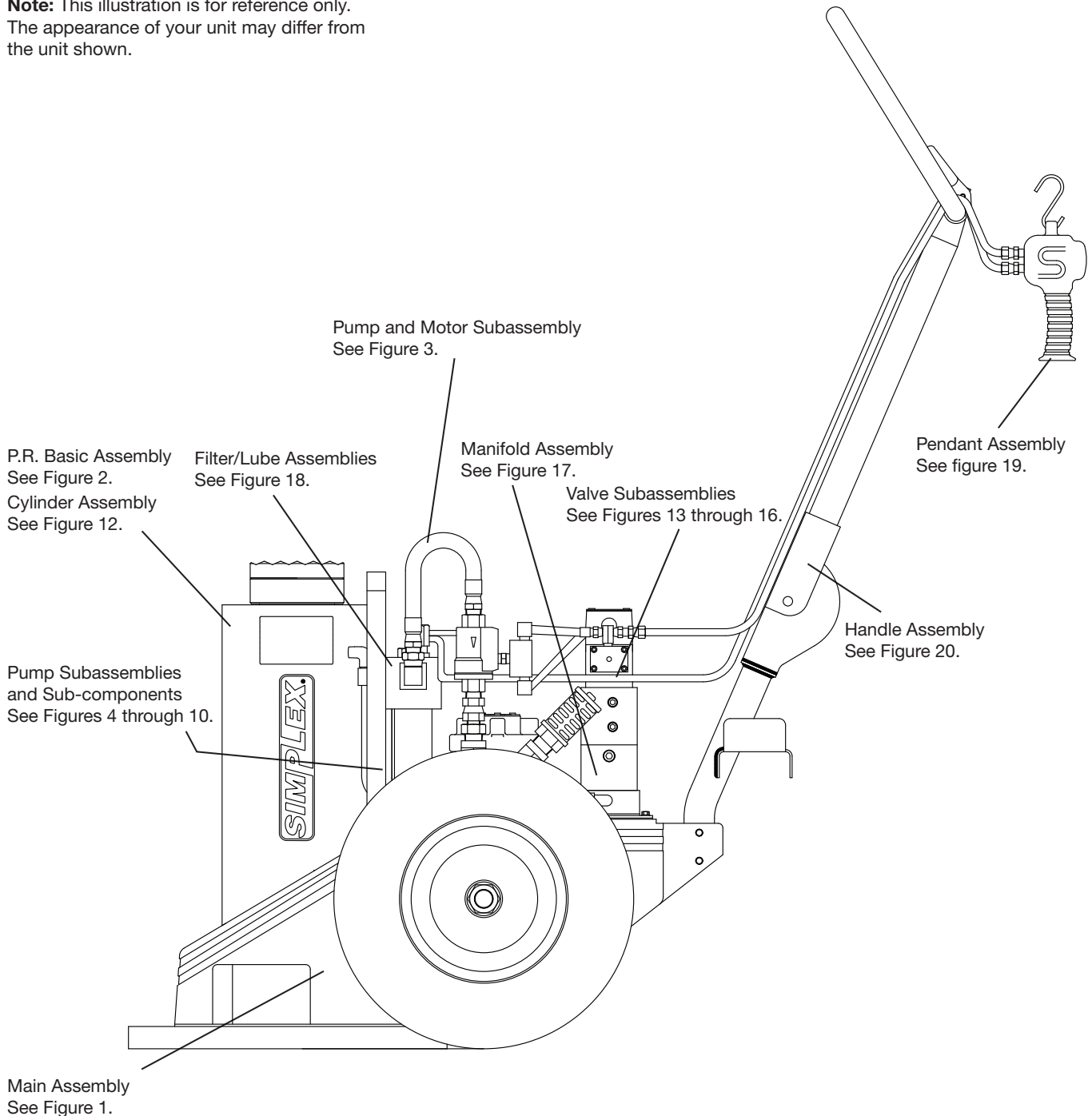
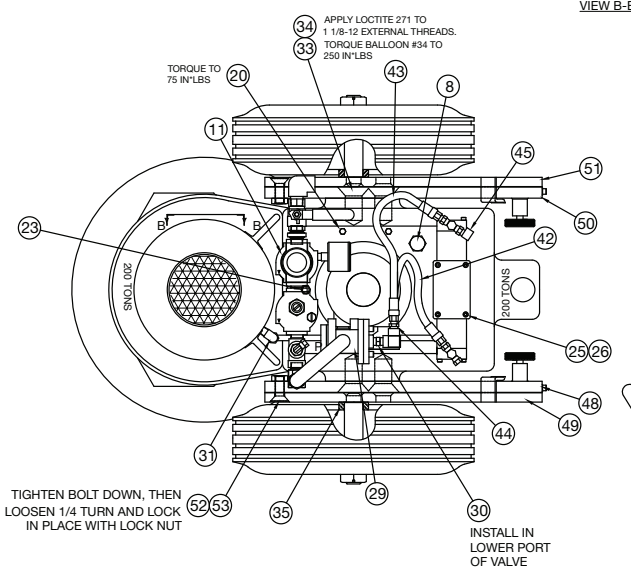
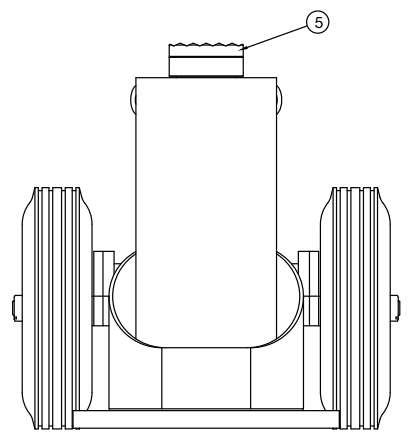
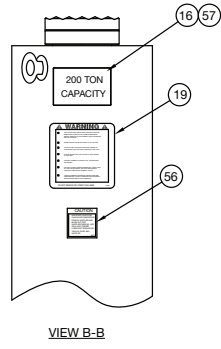
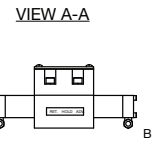
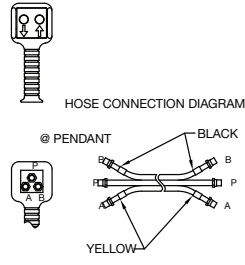


Figure 1 - Main Assembly

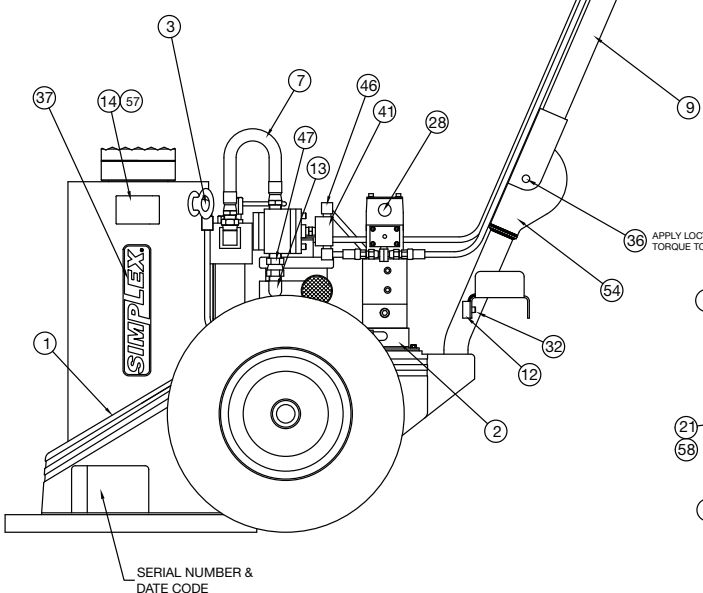
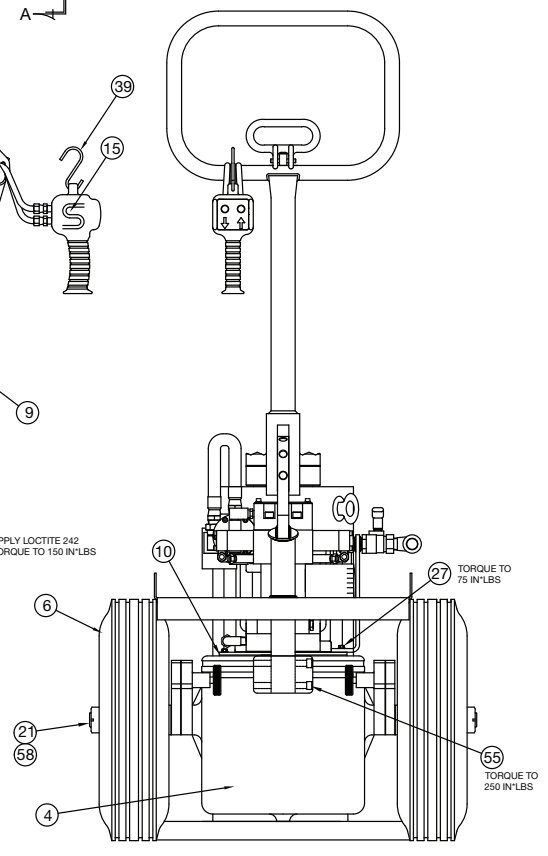
Note: This illustration is for reference only. The appearance of your unit may differ from unit shown.

Testing Procedure:

Load to 200 Tons, hold and check.
 No drift allowed. Lift 2.5-1.75"
 @ 1 minute. Lower and check
 load holding 0.31" drift max.
 before load lock off.



TIGHTEN BOLT DOWN, THEN LOOSEN 1/4 TURN AND LOCK IN PLACE WITH LOCK NUT

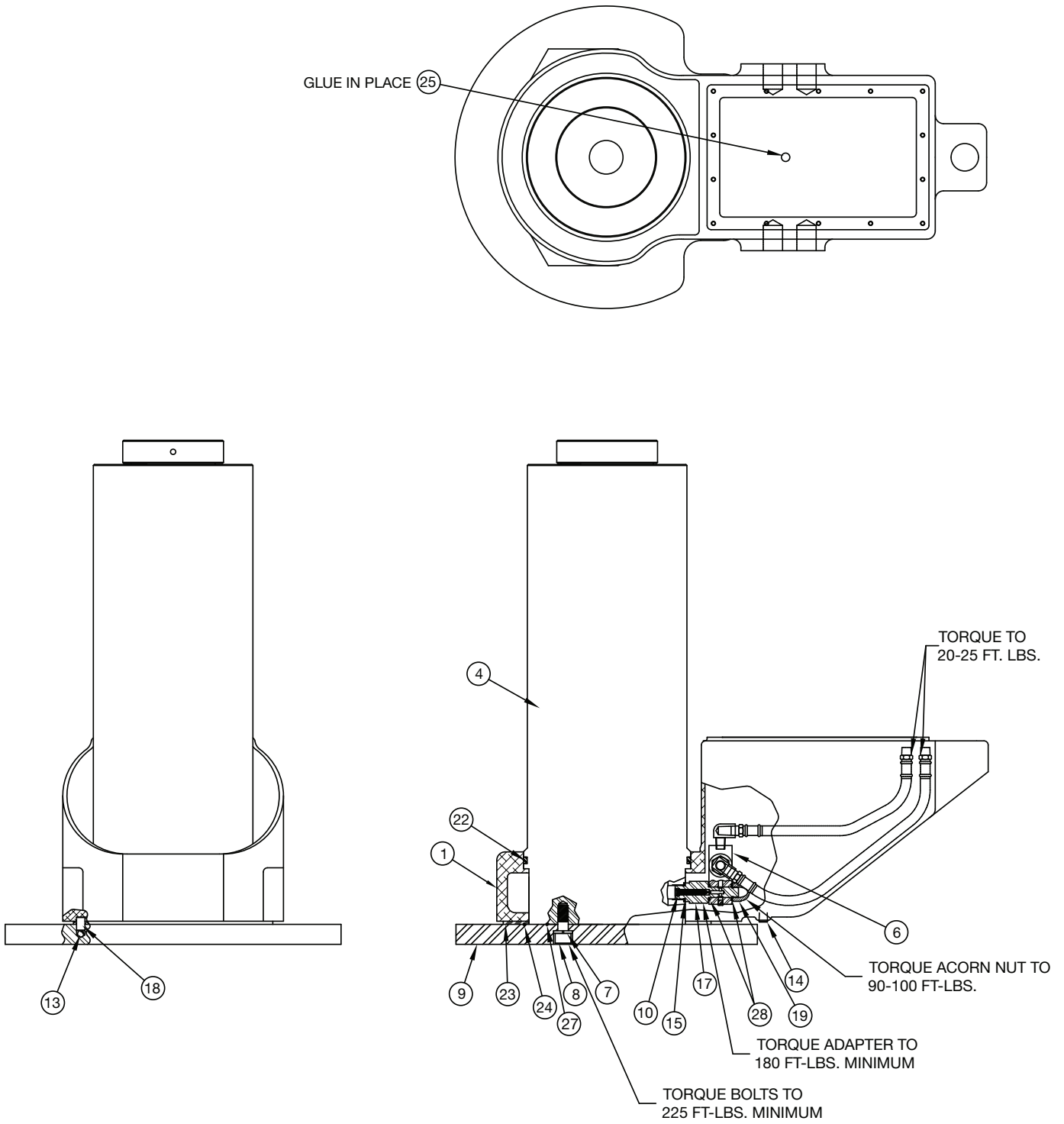


Repair Parts List (Refer to figure 1)					
Item	Model	Qty	Model	Qty.	Description
	JAS20026		JAS20037		
1	43659SS	1	43321SS	1	PR Basic ASM. (See Figure 2)
2	69769SS	1	69769SS	1	Pump Sub ASM PR (See Figure 3)
3	S40085	1	S40085	1	Male Elbow 3/8-3/8 Ferulok
5	S42208	1	S42208	1	Load Cap PR Long STM
6	S41944	2	S41944	2	Semi Pneumatic Tire
7	S41779	1	S41779	1	Air Tubing Powr Rise
8	S88743	1	S88743	1	Plug Hex O-Ring
9	41961SS	1	41961SS	1	Handle ASM (See Figure 20)
10	S85469	1	S85469	1	Reservoir Gasket
11	DS1019900SS	1	DS1019900SS	1	Filter/Lubricator/Regulator Asm (See Figure 18)
12	S43314	2	S43314	3	Spacer Adaptor Lock Ring
13	S86243	1	S86243	1	Elbow Male 1/2 NPT Pipe
14	43653	1	43372	1	Model Label
15	41950SS	1	41950SS	1	Motor Pendant Air (See Figure 19)
16	S43373	1	S43373	1	200 Ton Capacity LBL
18	S41965	1	S41965	1	Hose-EA.
19	89292	1	89292	1	Decal,Warning-PWR.RI
20	S69249	14	S69249	14	HHFCS, 1/4-20 X .625
21	S46053	2	S46053	2	Hex Lock Nut 1"-8
23	S69264	1	S69264	1	Breather Vent
24	N/A	1	S42505	1	Hanger 10" Lock Ring
25	N/A	4	S42552	4	SHCS 10-32 X 1/2" SS
26	N/A	4	S93940	4	Lockwasher #10
28	S42968	2	S42968	2	1/8 Swivel Tee
29	SDS1024660	1	SDS1024660	1	Air Control Valve
30	S45970	1	S45970	1	Male Hex Nipple 1/4 - 1/8
31	S43658	1	S43620	1	Tube
32	S93580	4	S93580	6	SHCS 1/4-20 X 3/8 LG
33	43326SS	4	43326SS	4	Threaded Insert
34	S43328	4	S43328	4	FHCS 3/4-10 X 2.00
35	S43331	2	S43331	2	Spacer P.R. Axle
36	S41983	1	S41983	1	Screw Shoulder

Repair Parts List (Refer to figure 1)					
Item	Model	Qty	Model	Qty.	Description
	JAS20026		JAS20037		
37	89967	1	89967	1	Simplex Logo Large
39	S42367	1	S42367	1	S-Hook Pendant
41	S44245	1	S44245	1	Shuttle Valve
42	S43099	1	S43099	1	Hose 1/4" 10.5LG
43	S43098	1	S43098	1	Hose 1/4" 12.25LG
44	S42667	2	S42667	2	Reducer 1/4"-1/8"
45	S42966	1	S42966	1	1/8" Street Elbow
46	S18970	2	S18970	2	Elbow1/4 90DEG STRT
47	S42967	1	S42967	1	1/2" Straight Swivel
48	43342SS	1	43342SS	1	Axle Asm Left Side
49	S43338	1	S43338	1	Axle Wldmt Left Side
50	43343SS	1	43343SS	1	Axle Asm Right Side
51	S43340	1	S43340	1	Axle Wldmt Right Sid
52	S42810	2	S42810	2	Fhcs 5/8-18 X 1.75 LK
53	S93882	2	S93882	2	Hex Nut 5/8-18
54	S42281	1	S42281	1	Lower Weldm't 5" PR
55	84692	2	84692	2	SHCS 3/8-16 X 1.75
56	88111	1	88111	1	Caution Decal
57	S46539	2	S46539	2	Decal Overlay
58	S41945	2	S41945	2	Spacer

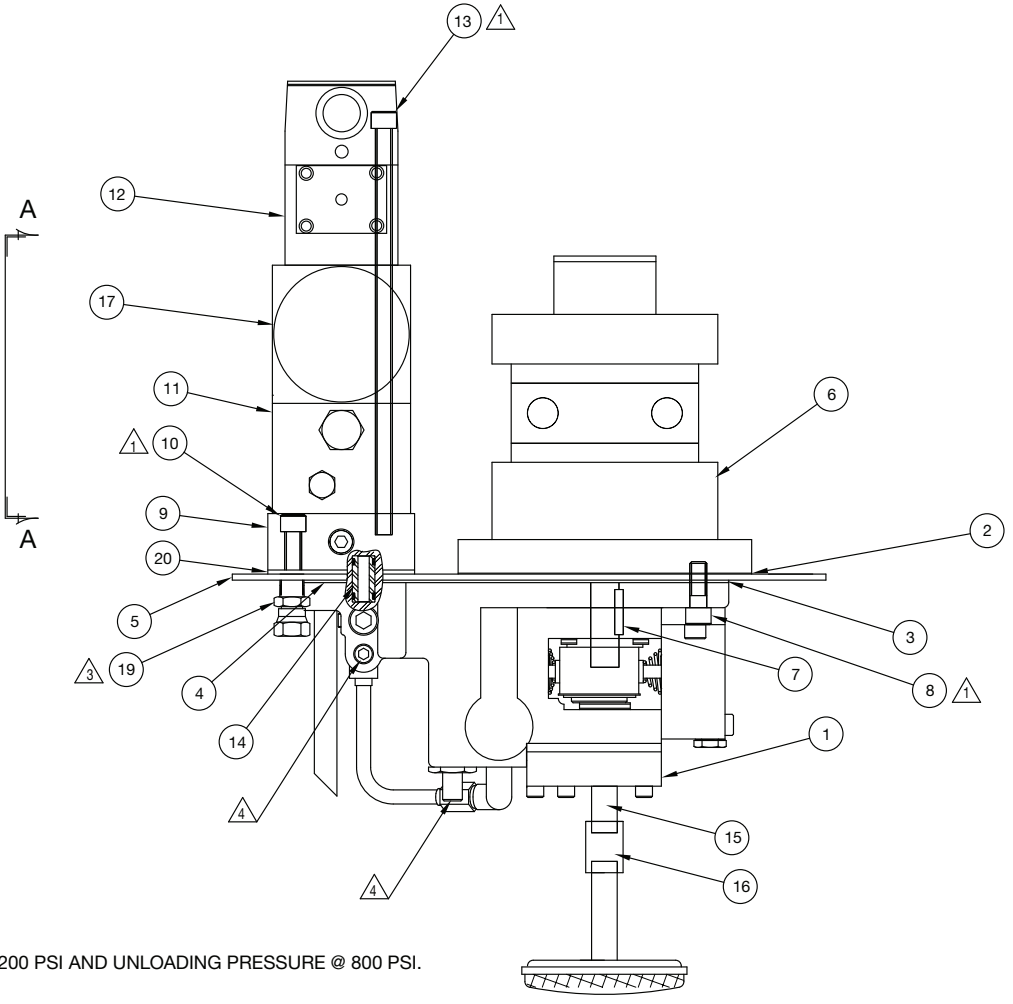
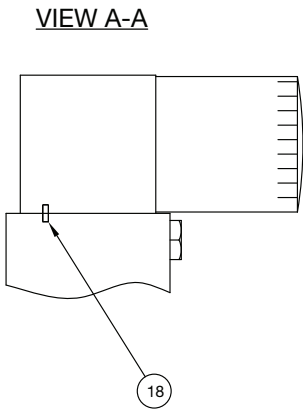
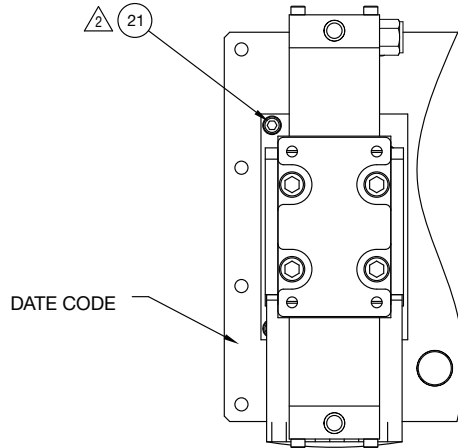
N/A = Not Available.

Figure 2 - 43659SS, 43321SS Pow'r Riser Basic Assembly



Repair Parts List (Refer to figure 2)				
Item	Model		Qty.	Description
	JAS20026	JAS20037		
BASIC ASSY	43659SS	43321SS		
1	S41886	S41886	1	Housing Mach P. R.
4	43656SS	43316SS	1	200 Ton Cylinder Assy. (see figure 12)
6	42353SS	42353SS	1	O.C. Valve and Hoses
7	S93947	S93947	6	Lock Washer 5/8"
8	S93605	S93605	6	SHCS 5/8-11 x 1.5" Lg.
9	S43285	S43285	1	P.R. Base
10	S43320	S43320	1	Screen - Nipple
13	S44968	S44968	2	Rubber Ball 3/8" 70
14	S93950	S93950	1	1/4" Soc Pipe Plug
15	◆	◆	1	Gasket Adapter
17	S43317	S43317	1	Adapter O.C. Valve
18	S42275	S42275	2	PR Base Pin
19	S46740	S46740	1	Acorn Nut 5/8-11
22	◆	◆	1	O-Ring 9" x 9-1/2"
23	◆	◆	1	Gasket Base
24	◆	◆	1	O-Ring Power Riser
25	66021	66021	1	Magnet
27	◆	◆	1	O-Ring 7" x 7-1/4"
28	S68183	S68183	2	Gasket Plug
◆ Included in 54411 Repair Kit.				

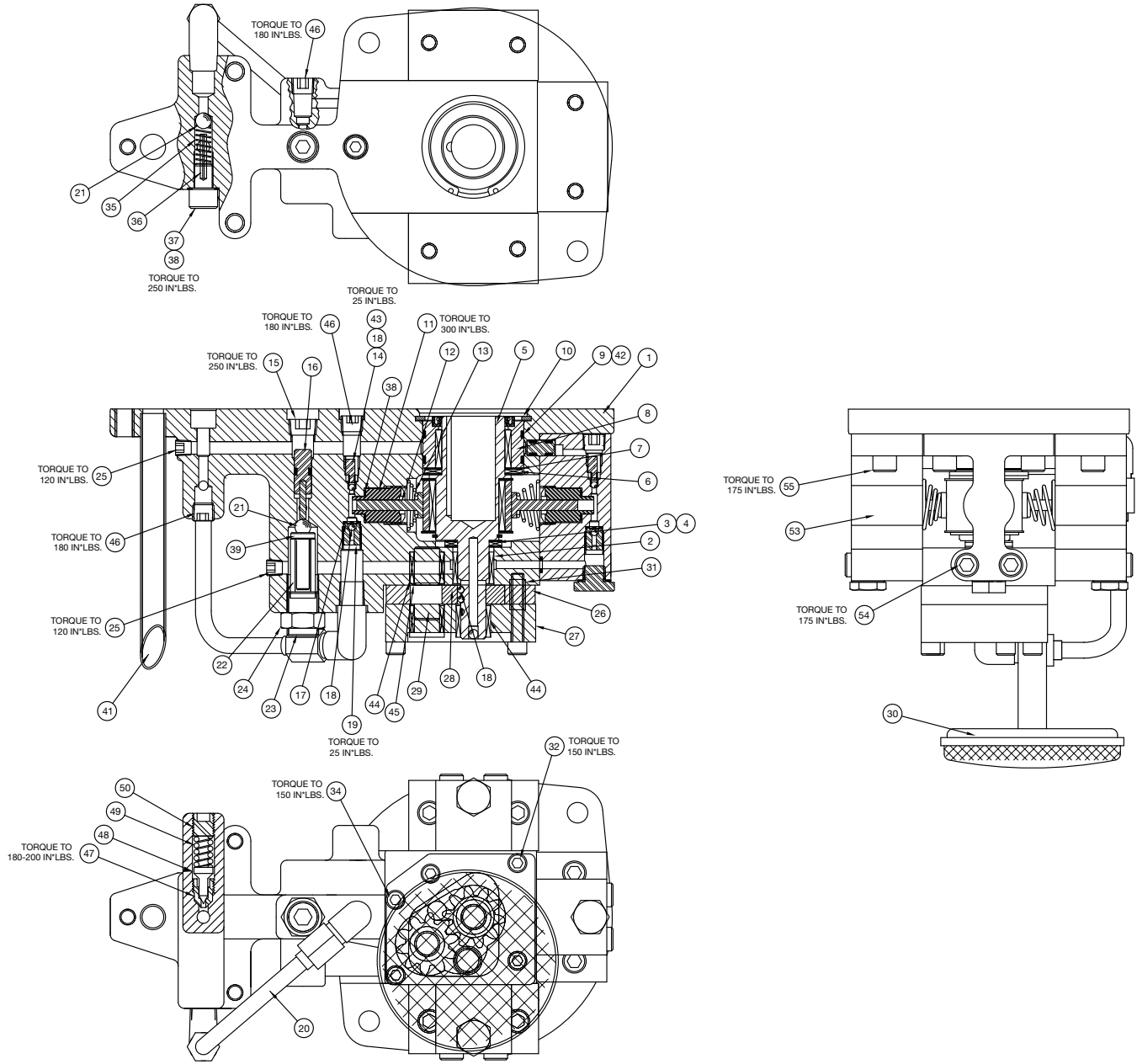
Figure 3 - 69769SS Pump and Motor Sub-Assembly



- NOTES:**
- △ TORQUE TO 225-275 IN-LBS.
 - △ TORQUE TO 75-100 IN-LBS.
 - △ TORQUE TO 325-375 IN-LBS.
 - △ PRESSURE RELIEF SET @ 10,000-10,200 PSI AND UNLOADING PRESSURE @ 800 PSI.

Repair Parts List (Refer to figure 3)			
Item	Part Number	Qty.	Description
1	(See Fig. 4)	1	Pump ASM
2	★	1	Gasket-Motor
3	★	1	Gasket-Pump Motor
4	★	1	Gasket-Pump @ Valve
5	DD6038101S	1	Plate, Reservoir Cover Pow'r Riser
6	⊕	1	Air Motor 8AMNRV28A
7	S69026	1	Pin, Dowel 3/16 1" Long
8	S93596	2	SHCS 3/8-16 X 1-1/4
9	(See Fig. 17)	1	Manifold ASM NPR
10	S86184	3	SHCS 3/8-16 X 1.5
11	(See Fig. 16)	1	Locking VLVE W/REL
12	(See Fig. 13)	1	3P4wm VLV. ASM.AIR
13	S42737	4	SHCS 3/8-16 X 9.0
14	(See Fig. 10)	1	Adapter Assy.
15	S69442	1	Nipple 1/4 NPT X 1.5L
16	S80241	1	Pipe Coupling 1/4
17	(See Fig. 9)	1	Filter Block ASM
18	561604	2	Spring Pin
19	S41964	2	Swivel Fitting
20	DD6106037S	1	Gasket, Valve Pow'r Riser
21	93584	2	1/4-20 SHCS 1.25 LG
★ Included in S54177 Repair Kit.			
⊕ 6028099 Motor Vane Repair Kit			

Figure 4 - 69445SS Pump Assembly

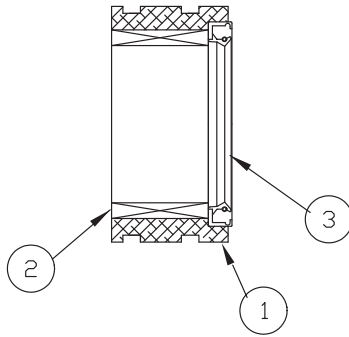


Repair Parts List (Refer to figure 4)

Item	Part Number	Qty.	Description	Item	Part Number	Qty.	Description
1	S44917	1	Pump Body 4 Piston	28	68855S	1	Gear Set
2	S68360	1	Bearing, Roller	29	S68850	1	Shaft-Idler
3	S66033	1	Thrust Bearing	30	S68884	1	Screen
4	S66474	2	Thrust Washer	31	S68922	2	Tube-Guide .22
5	(See Fig. 7)	1	Eccentric Shaft Assembly	32	S68255	4	SHCS 1/4-28 x 1-3/4"
6	S66106	1	Thrust Bearing	34	89148	1	SHCS 1/4-28 x 1-1/2"
7	S66108	2	Thrust Washer	35	S68225	1	Spring
8	(See Fig. 5)	1	Adapter-Shaft Asm.	36	S81332	1	Roll Pin 1/8 x 15/16"
9	★	2	O-Ring 1-7/8 x 2" Ure	37	S68226	1	Screw, Ball Stop
10	S68978	1	Retaining Ring	38	S85726	2	Gasket 25/64 x 19/32"
11	S68915	1	Adaptor .210 Dia.	39	S43673	1	Spring Cap Unload Valve
12	S68830	1	Piston .210 Dia.	41	S68569	1	Tube Return
13	S68340	1	Spring, Piston	42	★	2	Shaft Adp Backup Was.
14	S68810	1	Ball Stop	43	S66042	1	Spring
15	S93950	1	1/4" Soc Pipe Plug	44	S68891	3	Bearing
16	(See Fig. 6)	1	Unloading Piston Assy	45	S68892	1	Ring-Retaining
17	S66043	1	Ball Retainer	46	S81093	3	Pipe Plug 1/8" Flush
18	S90906	5	Ball 1/8"	47	▲	1	Seat - Ext Relief
19	S66046	1	Intake Seat	48	▲	1	Cone - Ext Relief
20	68851SS	1	Tube Asm	49	▲	1	Spring - Relief Valve
21	S91701	2	Ball 5/16"	50	S66083	1	Relief Valve Adj. Screw
22	S43671	1	Unloading Spring	53	68832SS	3	Piston Blk .210
23	S43674	1	Set Screw Unloading Valve	54	69392	6	SHCS 5/16-24 x 1.75"
24	S43675	1	Hex Nut Unloading Valve	55	S82687	6	SHCS 5/16-24 x 5/8"
25	S97641	2	1/16" Soc Pipe Plug				
27	S68849	1	Plate-Bottom				

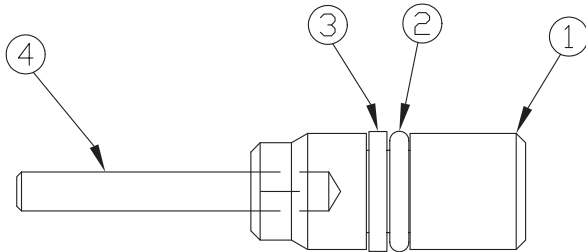
★ Included in S54177 Repair Kit. ▲ Included in 55057 Relief Kit.

Figure 5 - 68829SS Adapt-Shaft Assembly



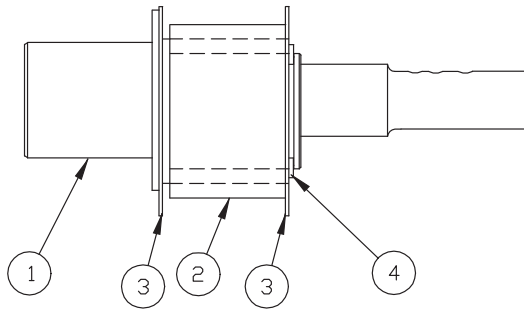
Repair Parts List (Refer to figure 5)			
Item	Part Number	Qty.	Description
1	S68912	1	Adapter Shaft
2	S66030	1	Bearing
3	★	1	Seal
★Included in Repair Kit S54177.			

Figure 6 - 43766SS Unloading Piston Assembly



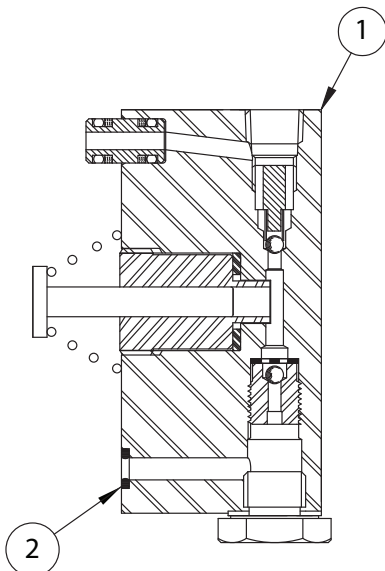
Repair Parts List (Refer to figure 6)			
Item	Part Number	Qty.	Description
1	S43765	1	Unload Piston
2	S5602009	1	O-Ring
3	S43768	1	Back-Up Washer
4	S43686	1	Roll Pin

Figure 7 - 68906SS Eccentric Shaft Assembly



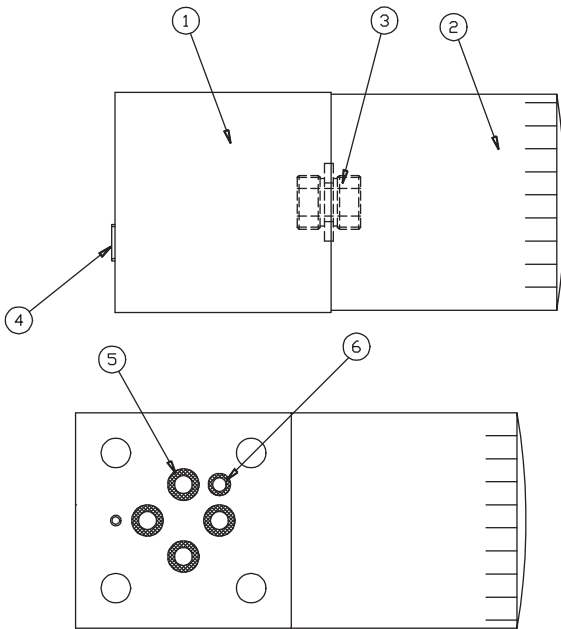
Repair Parts List (Refer to figure 7)			
Item	Part Number	Qty.	Description
1	S68907	1	Eccentric Shaft
2	68818SS	1	Bearing
3	S69475	2	Bearing Washer
4	S67863	1	Retaining Ring
5	S90548	1	Ball

Figure 8 - 68832SS Piston Block Assembly



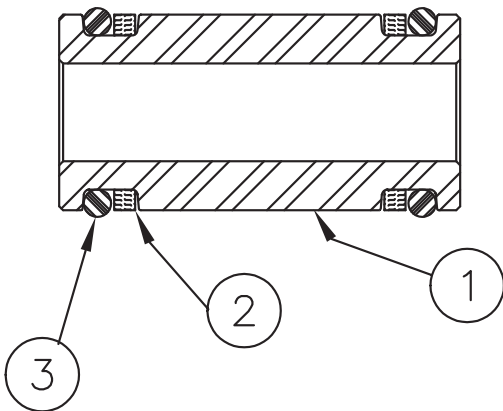
Repair Parts List (Refer to figure 8)			
Item	Part Number	Qty.	Description
1	68832SS	1	Piston Block Assembly (Includes item 2)
2	★	1	O-Ring 3/16 x 5/16"
★ Included in Repair Kit 54177. Note: Piston block components are shown in Fig. 10 for reference only. Order complete 68832SS piston block assembly if replacement is required. Piston block assembly is not repairable.			

Figure 9 - 69740USS Filter Block Assembly



Repair Parts List (Refer to figure 9)			
Item	Part Number	Qty.	Description
1	S69546	1	Filter Block
2	S69670	1	Oil Filter Power Pump
3	S69144	1	Adapter Filter
4	S93950	2	1/4" Soc Pipe Plug
5	S56020112	4	O-Ring 5/16 x 7/16" URE
6	S5602008	1	O-Ring 3/16 x 5/16"

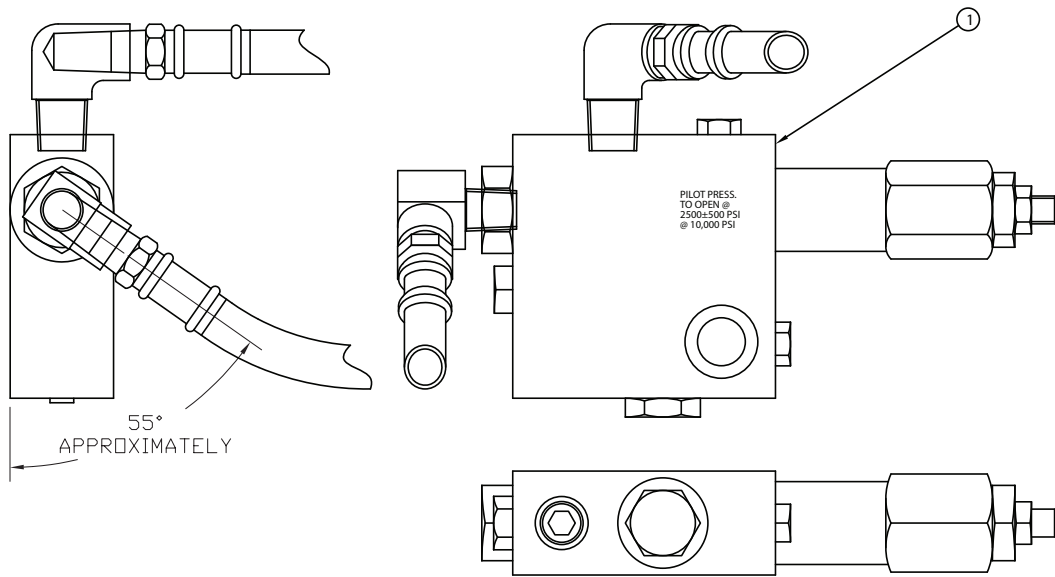
Figure 10 - 68963SS Adapter Assembly



Repair Parts List (Refer to figure 10)			
Item	Part Number	Qty.	Description
1	S88073	1	Valve Adapter
2	★	2	B-U Ring
3	S5602012	2	O-ring 3/8 x 1/2"

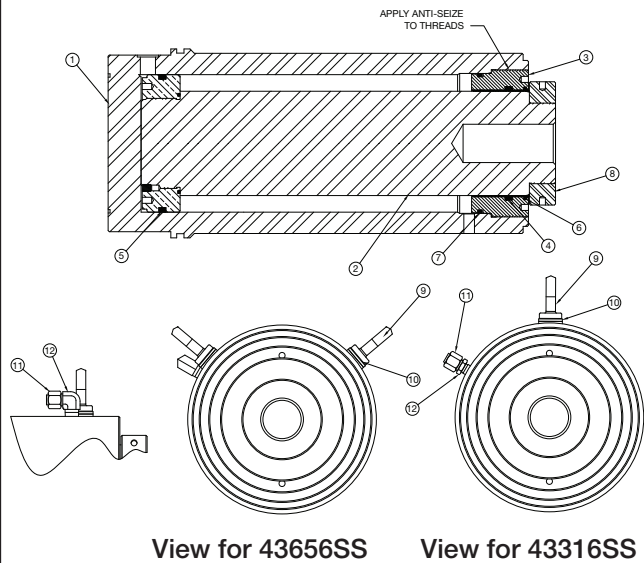
★Included in Repair Kit S54177.

Figure 11 - 42353SS Over-Center Valve Subassembly



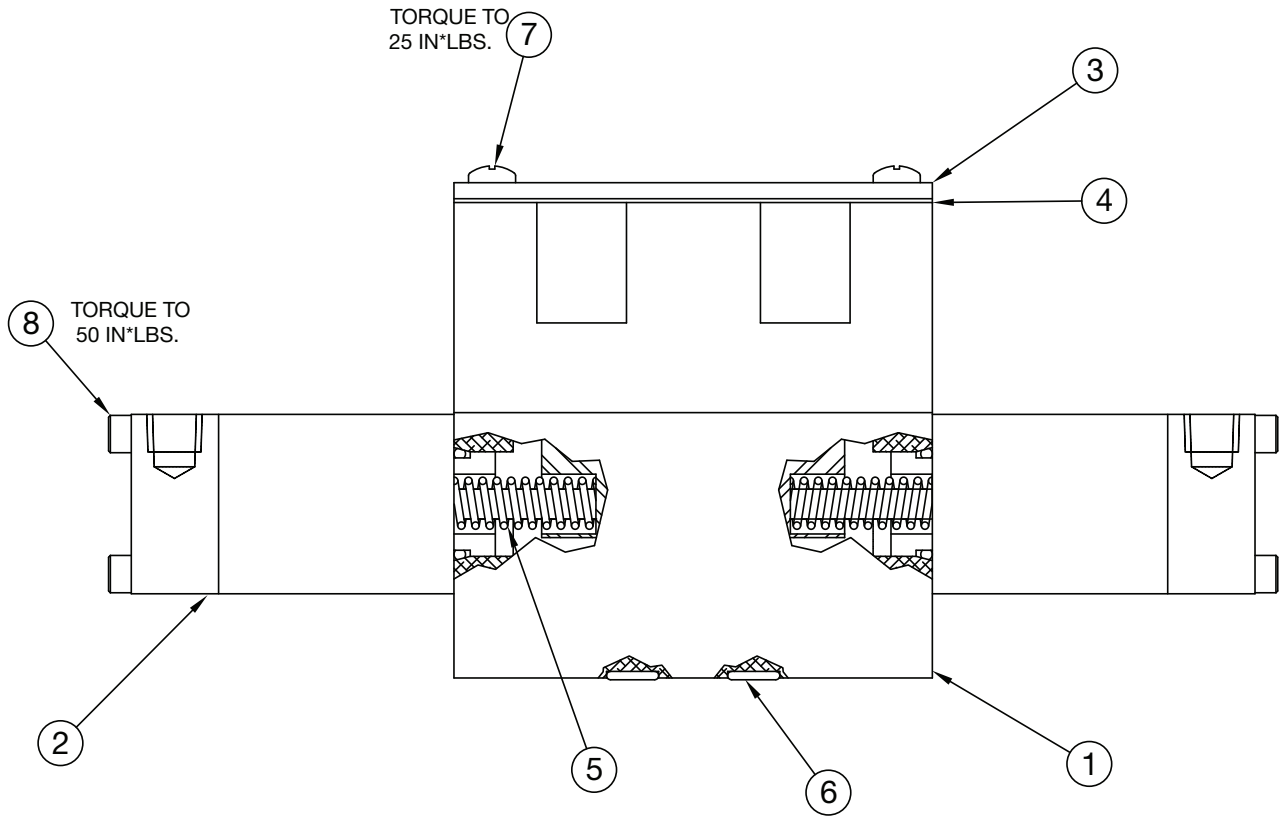
Repair Parts List (Refer to figure 11)			
Item	Part Number	Qty.	Description
1	42353SS	1	Valve, Over-Center
Note: Item 1 includes OC valve subassembly, elbows and hydraulic hoses. Items not sold separately. Order complete 42353SS OC valve assembly if replacement is required. Valve is not repairable.			

Figure 12 - 43656SS, 43316SS Cylinder Assembly



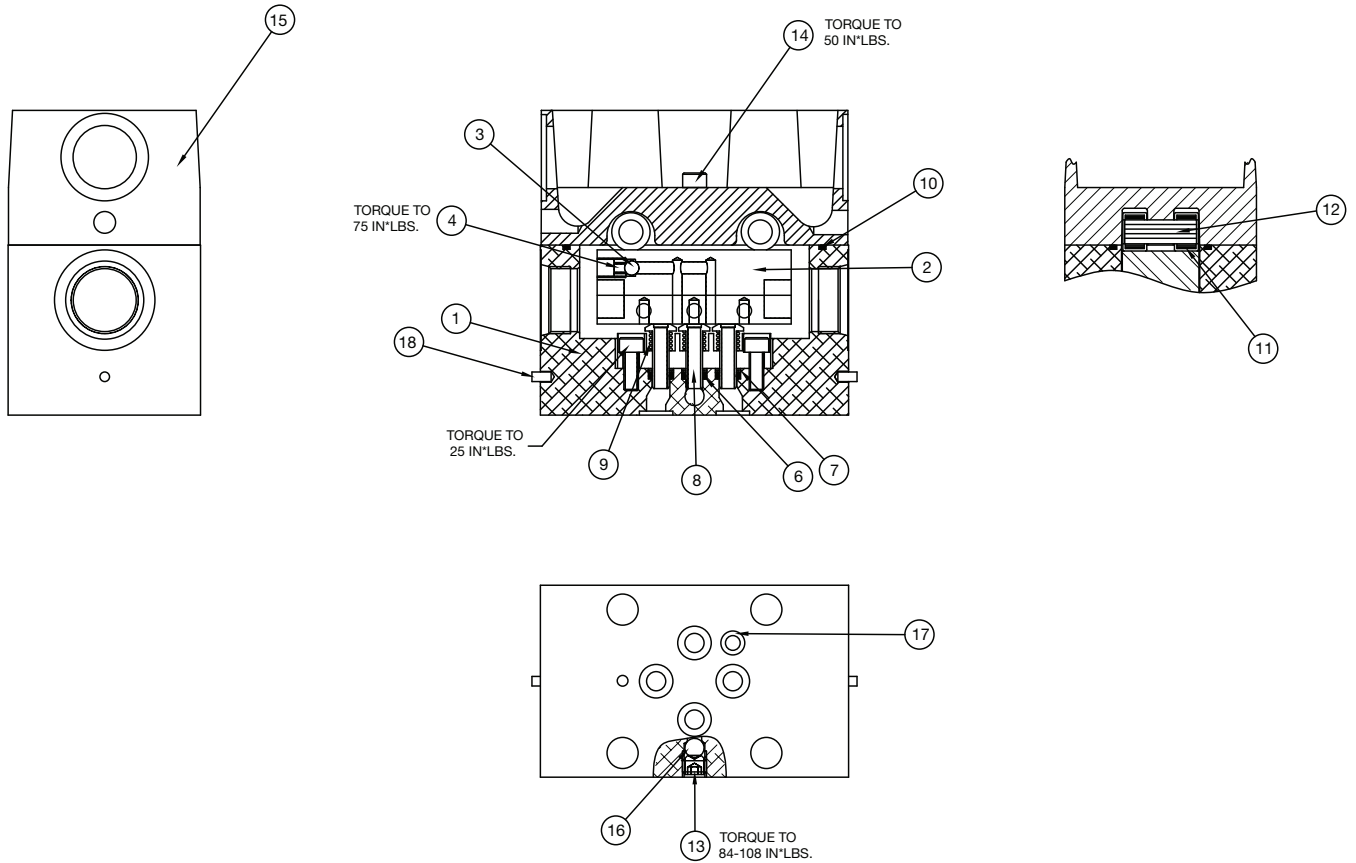
Repair Parts List (Refer to figure 12)					
Model	JAS20026		JAS20037		
Item	Asm. 43656SS	Qty.	Asm. 43316SS	Qty.	Description
1	N/A	1	N/A	1	Cylinder Weldment
2	43660SS	1	43296SS	1	Piston Rod Asm.
3	S43299	1	S43299	1	Head Gland
4	*	1	*	1	T-Seal Rod 5-1/2" Dia
5	*	1	*	1	T-Seal Piston 7-1/4"
6	*	1	*	1	Wiper 5-1/2" Rod Dia
7	*	1	*	1	O-Ring 7" x 7-3/8"
8	S43298	1	S43298	1	Ring
9	S43308	2	S43308	1	Swivel Eye Bolt 1/2"
10	S44888	2	S44888	1	Washer Eyebolt
11	S45664	1	S45664	1	O-Ring Face Seal Plug
12	S44865	1	S45666	1	O-Ring Ftg, 3/8" NPT
* Included in 54410 Repair Kit. N/A = Not Available.					

Figure 13 - 41949SS 3P4WM Air Valve Assembly



Repair Parts List (Refer to figure 13)			
Item	Part Number	Qty.	Description
1	(See Fig. 17)	1	Valve Assembly TC
2	(See Fig. 18)	2	Air CYL ASM
3	S68388	1	Cover, Valve
4	S68389	1	Gasket CVR
5	S68711	2	Spring
6	★	4	O-Ring 5/16 x 7/16 URE
7	S98250	4	Screw, Fill HD Mach
8	S41959	8	SHCS #10-24 x 3.25"
★Included in Valve Kit 54491.			

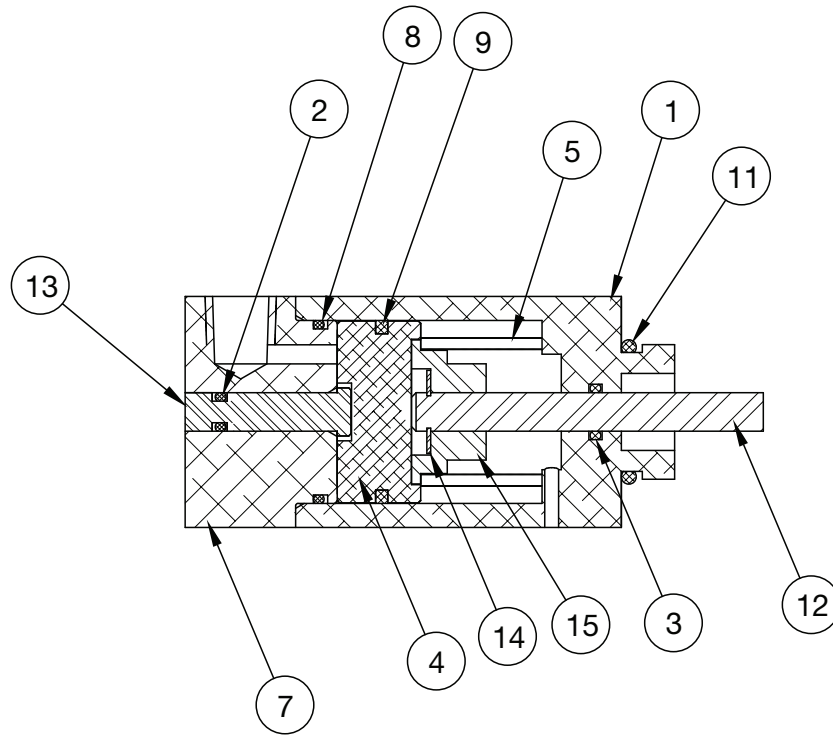
Figure 14 - 68710SS Valve Assembly TC



Repair Parts List (Refer to figure 14)			
Item	Part Number	Qty.	Description
1	S68708	1	Body-Valve
2	S68709	1	Slider Tandem Center
3	S90548	1	3/16" Dia Ball
4	S40254	1	Set Screw 1/4 - 28 x 1/4 Cup
6	★	3	O-Ring
7	★	3	Back Up Washer
8	S68383	3	Shear Seal
9	S68384	3	Spring
10	S5602038	1	O-Ring
11	S68385	4	Bearing Roller 5/16 x 1/2 x 5/16 Wide
12	S68390	2	Pin Bearing
13	94418	1	Set Screw 5/16 - 18 x 1/4 Cup
14	S68264	2	SHCS #10 - 32 x 1" LG
15	S68381	1	Plate-Top Machining
16	92549	1	1/4" Dia. Ball
17	★	1	O-Ring (0.19 x 0.31 x 0.06) Buna
18	S69636	2	Roll Pin 1/8 x 1/4 LG

★Included in Valve Kit 54491.

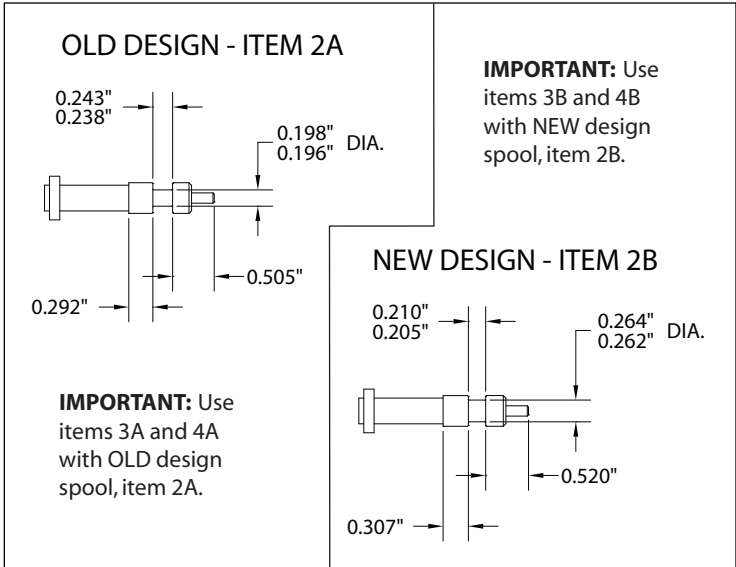
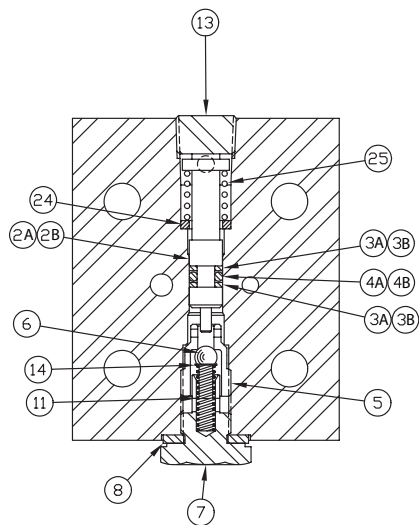
Figure 15 - 41954SS Air Cylinder Assembly



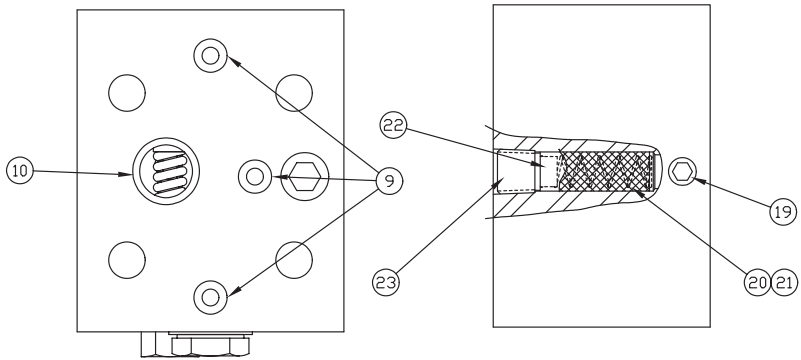
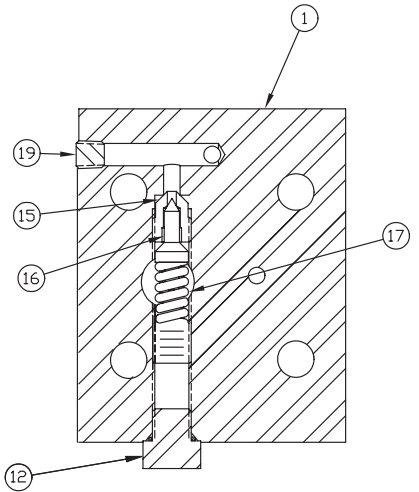
Repair Parts List (Refer to figure 15)			
Item	Part Number	Qty.	Description
1	S42744	1	Air Cylinder Body ZA
2	S5602006	1	O-Ring 0.12 x 0.25 x 0.06
3	S5602010	1	O-Ring
4	S42747	1	Air Cylinder Piston ZA
5	S42749	1	Spring Air CYL
7	S41956	1	End Cap
8	S5602023	1	O-Ring
9	SDD2957141	1	Ring Glide 1 3/16"
11	S5603910	1	O-Ring
12	S42746	1	Push Pin Air Valve
13	S41958	1	Override Pin
14	S42750	1	E-Ring 1/4" Shaft
15	S42748	1	Spring Plate Air VLV

Figure 16 - 42480SS Locking Valve Subassembly (with relief)

SPOOL AND SEAL REPLACEMENT INFORMATION



Note: Old design spool (2A) must be replaced with new design spool (2B) if it is worn or damaged. Old design spool (2A) is no longer available.

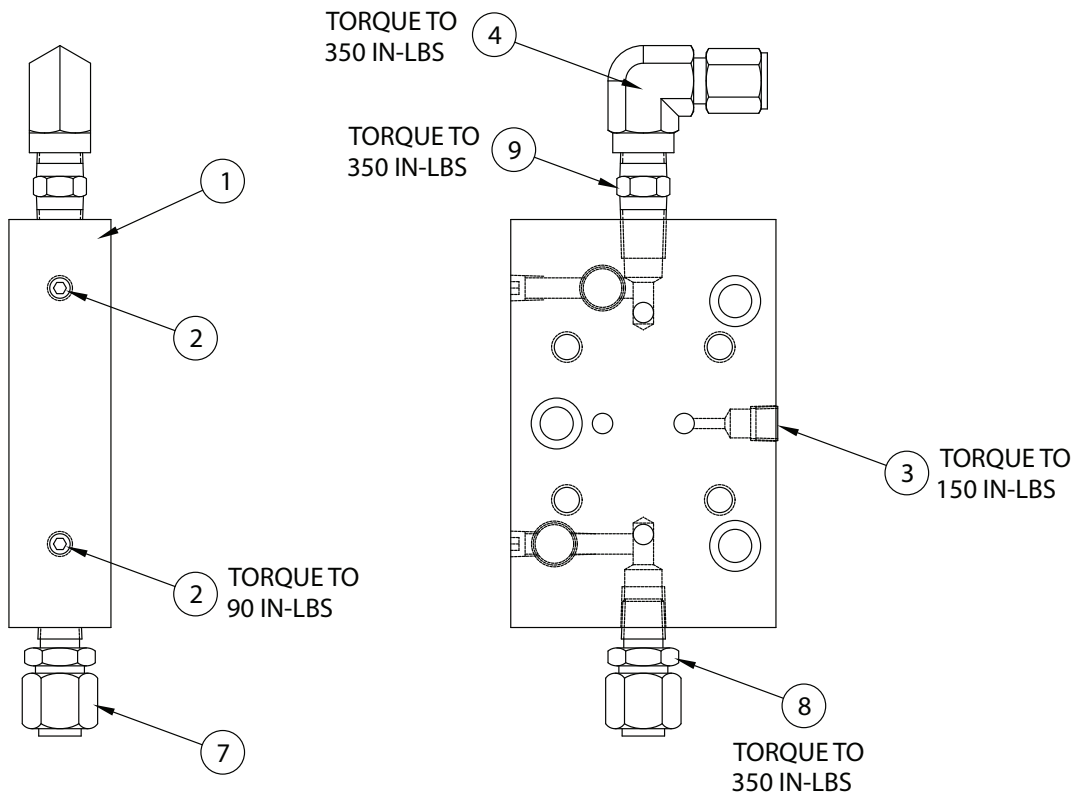


Repair Parts List (Refer to figure 16)

Item	Part Number	Qty.	Description	Item	Part Number	Qty.	Description
1	S42307	1	Locking Valve Body - Relief	12	S68258	1	Plug SAE #4
2A	(not available)	1	Spool Piston (old design)	13	S84084	1	Pipe Plug 3/8" NPT Flush
2B	S42727	1	Spool Piston (new design)	14	S69870	1	Spring Eyelet Lock
3A	S5608106	2	Backup Washer 8-106	15	▲	1	Seat - Ext Relief
3B	❖*	2	Backup Washer TEF -010	16	▲	1	Cone - Ext Relief
4A	S5602106	1	O-Ring 3/16 x 3/8"	17	▲	1	Spring - Relief Valve
4B	❖*	1	O-Ring 1/4 x 3/8"	18	S66083	1	Relief Valve Adjusting Scr.
5	S68590	1	Seat	19	40049	3	1/16" Pipe Plug - Flush
6	S92526	1	Ball 9/32"	20	S69518	1	Screen O.C. Valve
7	S69508	1	Plug - Adapt P.R. Lock	21	S42423	1	Screen O.C. Valve
8	S68183	1	Gasket - Plug	22	S69517	1	Screen Cap
9	*	3	O-Ring 1/4 x 3/8" Ureth	23	46509	1	Pipe Plug 1/4" Flush
10	*	1	O-Ring 5/8 x 3/4" Ureth	24	S42726	1	Washer PR Lock Block
11	S68870	1	Compression Spring	25	S68871	1	Compression Spring

▲ Included in 55057 Relief Kit. ❖ Included with item 2B * Included in 54686 Seal Kit

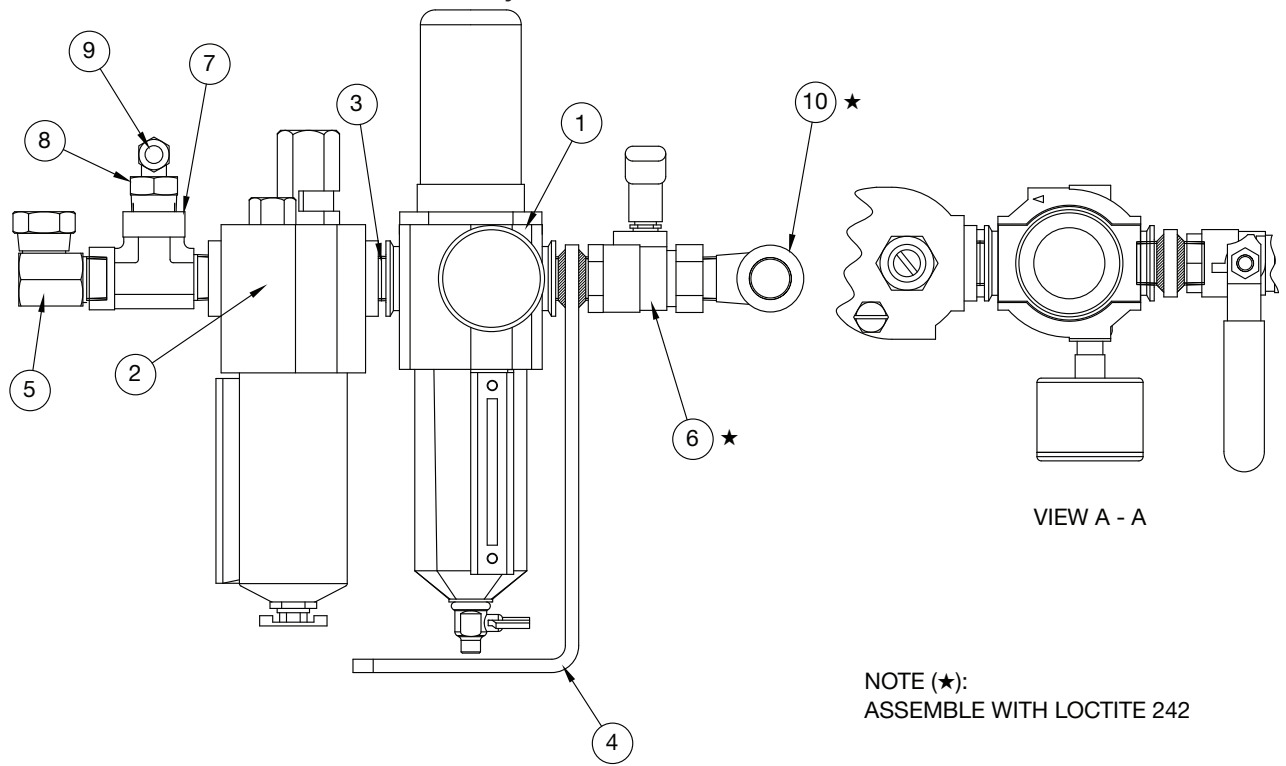
Figure 17 - 69749SS Manifold Assembly



Repair Parts List (Refer to figure 17)

Item	Part Number	Qty.	Description	Item	Part Number	Qty.	Description
1	S69429	1	Manifold Pow'r Riser	7	S45664	1	O-Ring Face Seal Plug
2	40049	2	1/16" Pipe Plug - Flush	8	S45663	1	O-Ring Face Tube Ftg 1/4"
3	S81093	1	Pipe Plug 1/8" Flush	9	S4100067	1	Nipple 1/4"
4	S43166	1	Elbow 90 3/8 - 1/4"				

Figure 18 - DS1019900SS Filter Lube Assembly

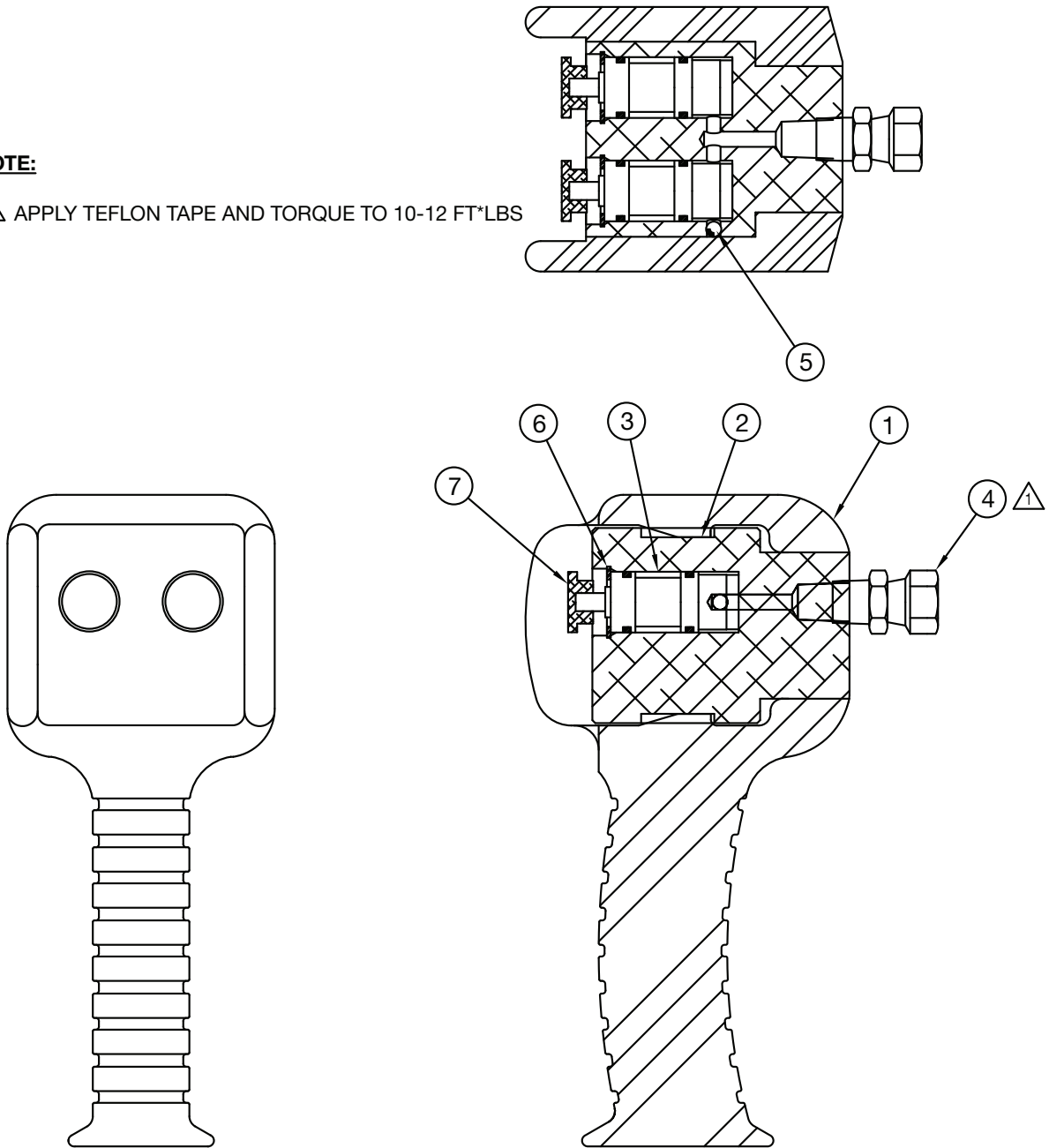


Repair Parts List (Refer to figure 18)			
Item	Part Number	Qty.	Description
1	SDS1018118	1	Filter/Regulator
2	S86242	1	Air Lubricator
3	S69998	1	Pipe Nipple 1/2" BRS
4	S42511	1	BRCKT/Nipple WELDMT
5	S41763	1	Swivel Male 1/2 NPTF
6	S85851	1	Air Valve
7	S42378	1	Male Run Tee 1/2
8	S42377	1	Pipe ADP 1/2 - 1/8
9	S42380	1	Swivel ADP 1/8 90
10	S86244	1	Street Elbow

Figure 19 - DS1019900SS Filter Lube Assembly

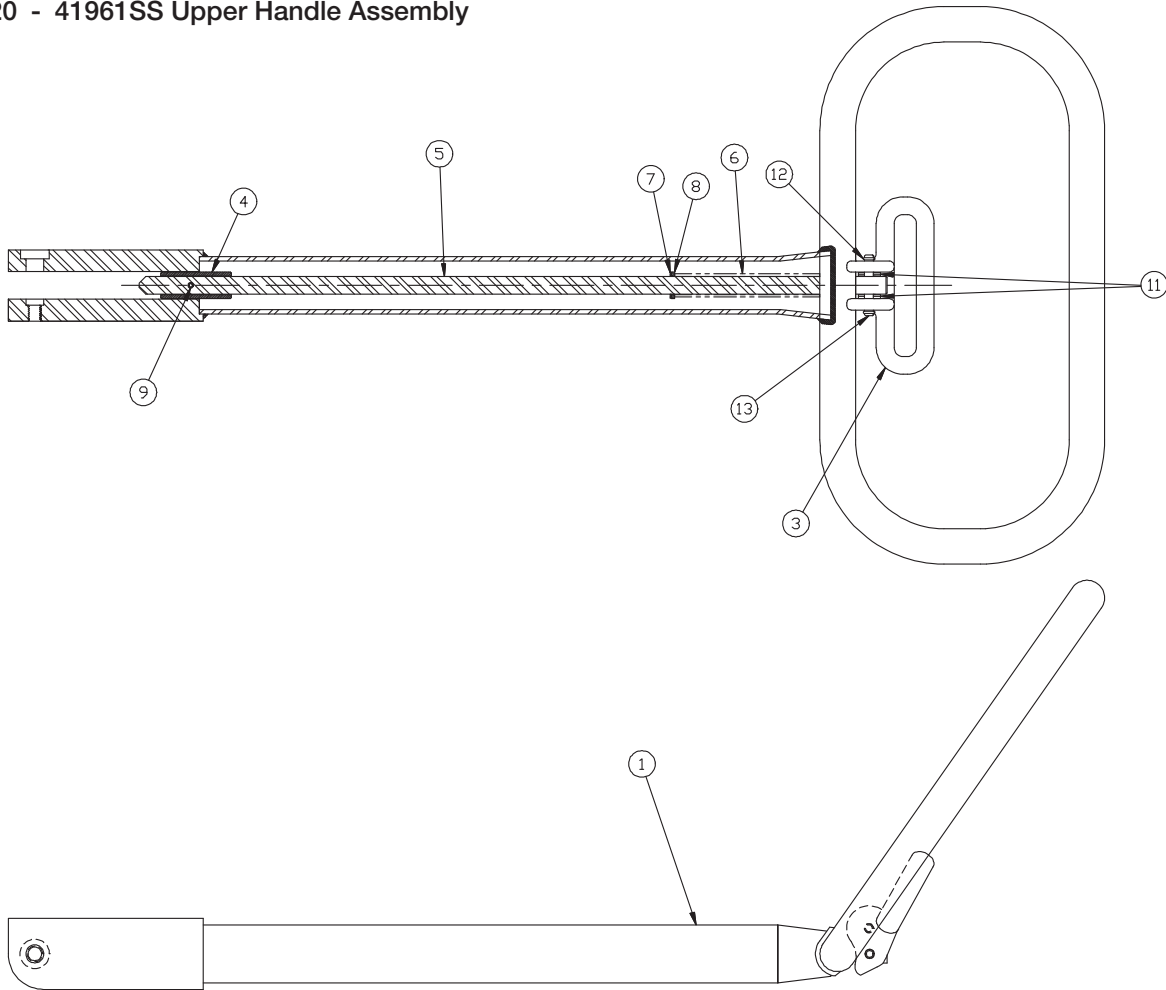
NOTE:

⚠️ APPLY TEFLON TAPE AND TORQUE TO 10-12 FT*LBS



Repair Parts List (Refer to figure 19)			
Item	Part Number	Qty.	Description
1	S41968	1	Pendant Body
2	S41969	1	Block Air Pendant
3	S41963	2	Cartridge - Air
4	S42381	3	Swivel ADP 1/8
5	S606961	3	5/32" Dia. Ball
6	S68808	2	Retaining Ring
7	S41970	2	Cartridge Cap

Figure 20 - 41961SS Upper Handle Assembly



Repair Parts List (Refer to figure 20)

Item	Part Number	Qty.	Description	Item	Part Number	Qty.	Description
1	S41595	1	Upper Weldment	8	S41614	1	Washer 9/16" ID x 3/32"
3	S42368	1	Handle Lock Lever	9	S42497	1	Roll Pin 5/32 x 7/8"
4	S41600	1	Sleeve	11	S88429	4	Washer SS 1/4"
5	S41601	1	Handle Rod	12	S42340	4	Pin Ring
6	S41602	1	Spring .656 x 9.50"	13	S42338	2	Pin Handle Lever
7	S41613	1	E-Ring .8/.82 x .042				



N86 W12500 Westbrook Crossing
 Menomonee Falls, WI 53051
 Phone - USA Only: 1 (800) 323-9114
 Phone - Inside/Outside USA: 1 (262) 293-1575
 Fax: 1 (262) 597-1127
www.tksimplex.com