

To Protect Your Warranty, Use Only ENERPAC Hydraulic Oil.

Enerpac recommends that all kit components be installed to insure optimum performance of the repaired pump.



Flow vs. Pressure	850 cu. in./min. @ 50 psi	105 cu. in./min. @ 1,000 psi	30 cu. in./min. @ 10,000 psi
Air Pressure	60-100 psi		
Air Consumption	40 cfm @ 100 psi		
Relief Valve Adjustment Range	800-10,000 psi		
dBA Noise Level	80-90 dBA @ 100 psi air pressure		

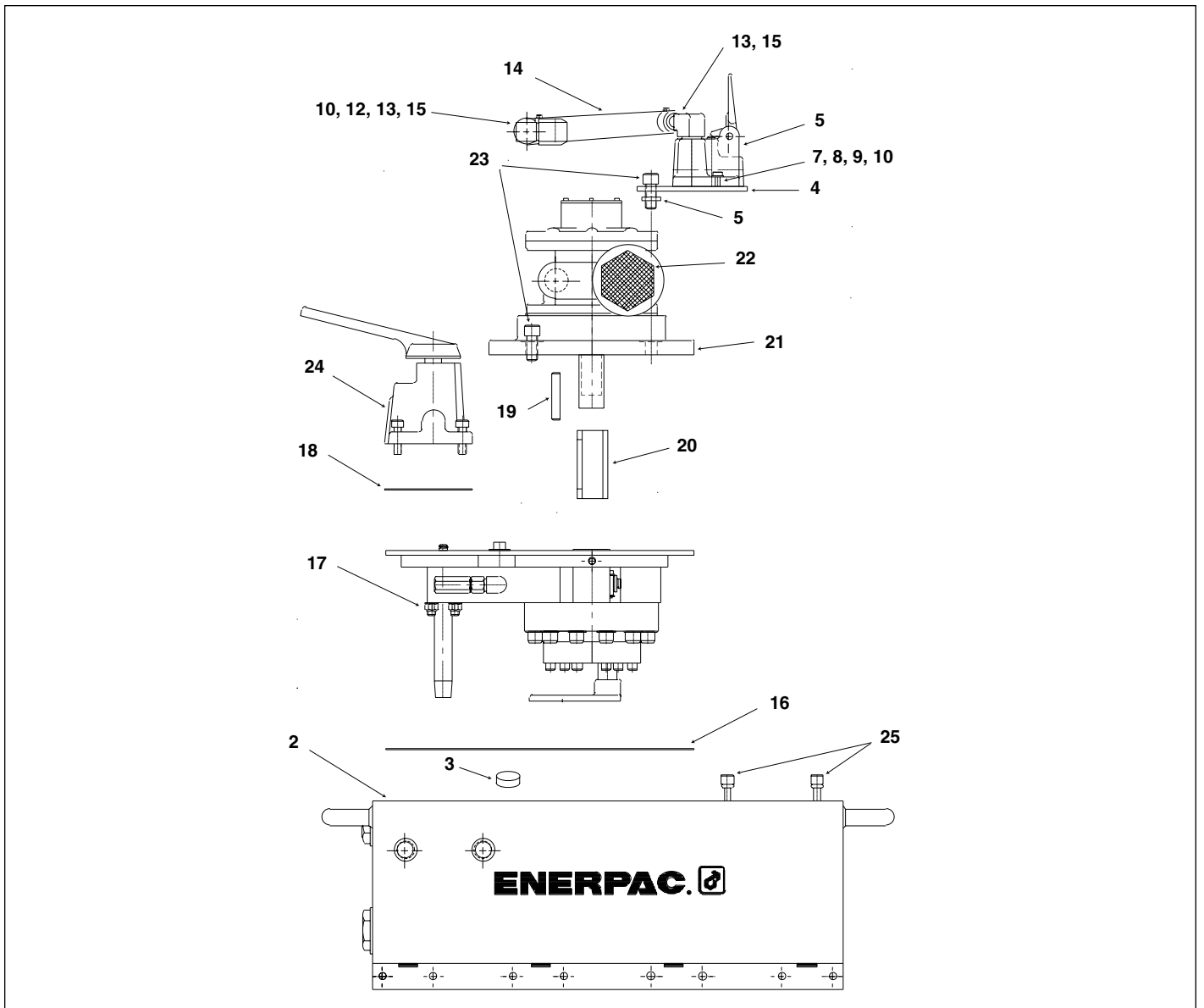


Figure 1, Pump and Reservoir Assembly

Repair Parts List for Figure 1							
Item	Part Number	Qty.	Description	Item	Part Number	Qty.	Description
2	DA11509025SR	1	8 liter (2 Gallon) Reservoir	13	DA5414095	2	Coupling
	DA11510025SR	1	20 liter (5 Gallon) Reservoir	14	DA5415646	1	Hose
	DA11511025SR	1	40 liter (10 Gallon) Reservoir	15	CB40299	2	Hose Clamp
3	C187018	3	Reservoir Magnet	16	★DA12114037	1	Reservoir Gasket
4	DA4920101	1	Air Valve Mounting Bracket	17	Pump Assembly — See Pump Section, pages 4 - 6		
5	B1032066	2	Spacer Washer	18	★F786167	1	Valve Gasket
6	VA-2	1	Air Valve Assembly	19	BA0520059	1	Pin
7	CBA523028-1A	2	Screw	20	DA4918038	1	Sleeve
8	B1086108	2	Flat Washer	21	DA4931900SR	1	Air Motor
9	B1065066	2	Lockwasher	22	M628950	1	Muffer
10	CBE1050120-1D	2	Hex Nut	23	CCA1025028-1A	4	Screw
11	G582039	1	Reducer Bushing	24	Directional Valve — See Valve Section, pages 7 - 9		
12	FZ1616	1	Street Elbow	25	CSS4729D	4	Screw (5 and 10 Gallon)

★ Indicates items included in and available only as part of Repair Kit PE304050K

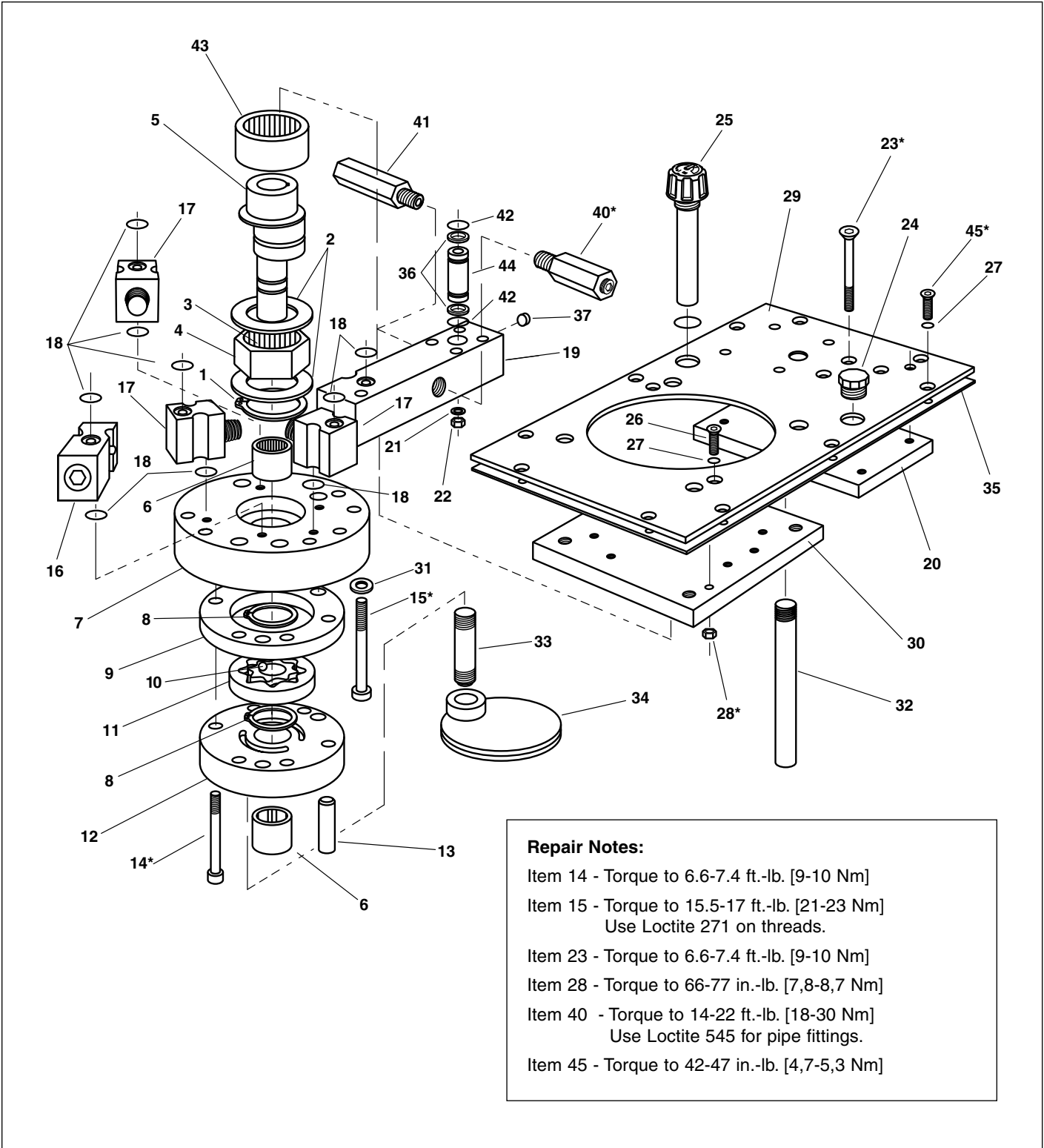


Figure 2, Basic Pump Assembly

Repair Parts List for Figure 2

Item	Part Number	Qty.	Description	Item	Part Number	Qty.	Description
1	★CCA1035044-1A	1	Retaining Ring	24	A8071006	1	Plug
2	BSS4725D	2	Ring	25	DA7454223	1	Level Gauge (2 & 5 Gallon)
3	BSS4599D	1	Needle Bearing		DA7455223	1	Level Gauge (10 Gallon)
4	DA3837350SR	1	Hex Cam Global Pump	26	CBA523028-1B	2	Screw
5	DA3824537SR	1	Eccentric	27	★B1003503	12	O-Ring
6	BSS5255D	2	Needle Bearing	28	DC1469120	2	Nut
7	DC3580101SR	1	Upper Plate with Bearing	29	DA12032101	1	Top Plate
8	★DA1985044	2	Retaining Ring	30	DA3832101SR	1	High Pressure Plate/Bearing
9	BSS5484D	1	Middle Plate	31	CAE1080108-1A	10	Washer
10	★B1005016	2	³ / ₁₆ " Ball	32	DA4104431	1	Return Pipe (8 & 20 liter)
11	BSS5117DSR	1	Gerotor Set		DA4105431	1	Return Pipe (40 liter)
12	BSS5371DSR	1	Bottom Plate with Bearing	33	DA4106431	1	Intake Pipe (8 & 20 liter)
13	CAA1029061-2B	2	Dowel Pin		DA4103431	1	Intake Pipe (40 liter)
14	CBA631028-1A	6	Screw	34	CV838950SR	1	Intake Filter
15	BSS5974D	10	Screw	35	★DA12114037	1	Gasket
16	DC633900SR	1	By-Pass Valve	36	★BSS0368D	2	Back-Up Ring
17	DA11976950SR	3	Piston Block	37	A1006245	1	Plug
18	★B1013803	9	O-Ring	40	DA5999900SR	1	Safety Valve
19	CS396096	1	Connector Block	41	DA5999900SR	1	Relief Valve
20	BSS5898D	1	Support Plate	42	★B1007503	2	O-Ring
21	CCE1060108-6A	4	Lock Washer	43	DA3831155	1	Bearing
22	CBB1060120-1D	4	Nut	44	DA9261096	1	Connector
23	CBA637028-1B	4	Screw	45	CBA519028-1B	10	Screw

★ Indicates items included in and available only as part of Repair Kit PE304050K

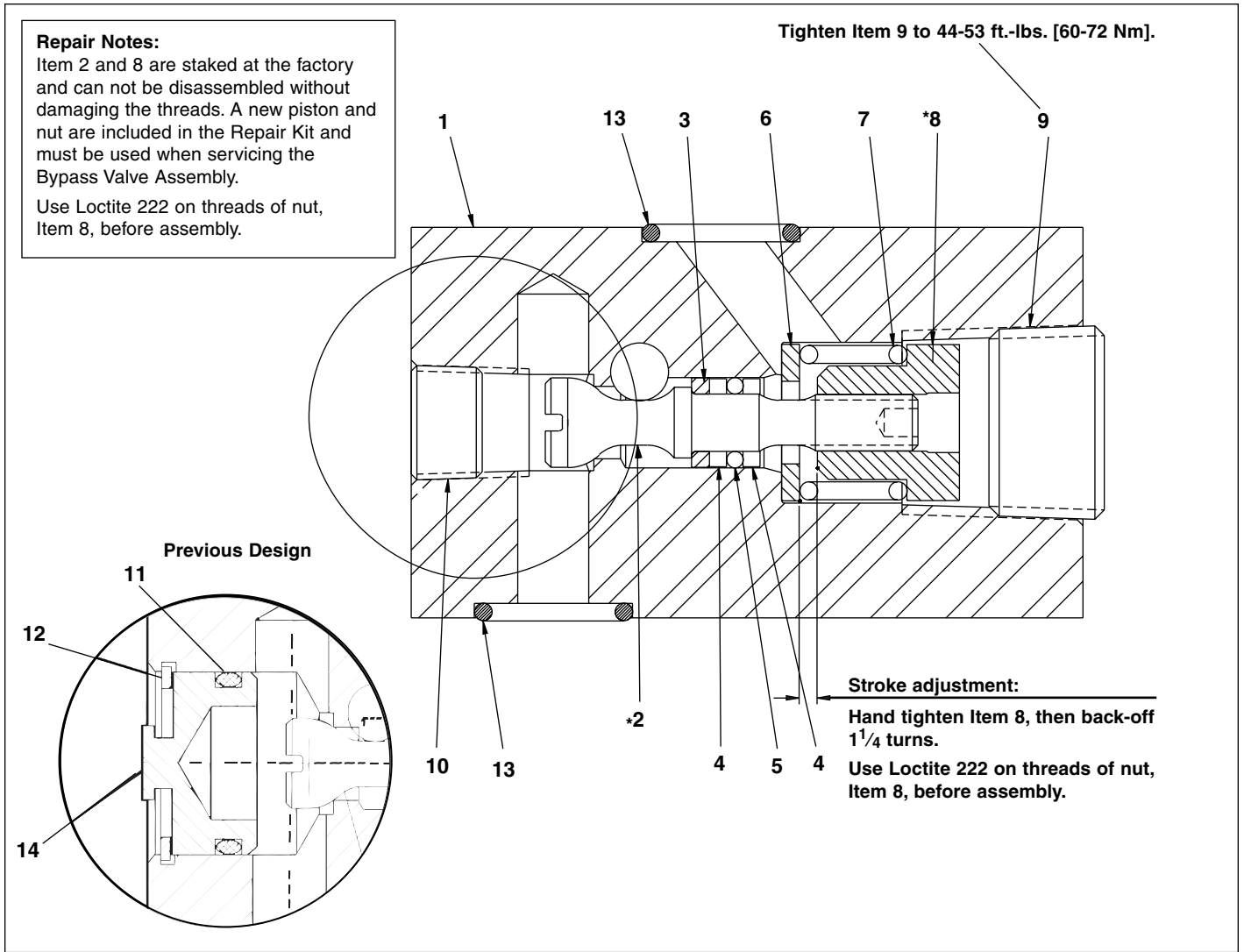


Figure 3, Bypass Valve Assembly (Early Models)

Repair Parts List for Figure 3							
Item	Part Number	Qty.	Description	Item	Part Number	Qty.	Description
1	DC633900SR		Complete Bypass Valve	8	★	1	Nut
2	★	1	Piston	9	A8071006	1	Plug
3	★	1	Stop Ring	10	A1007245	1	Plug
4	★	2	Back-Up Washer	11	★	1	O-Ring
5	★	1	O-Ring	12	★	1	Retaining Ring
6	CAE1070108-1A	1	Washer	13	★	2	O-Ring
7	BSS5528D	1	Spring	14	BSS5578D	1	Cap

★ Indicates items included in and available only as part of Repair Kit CY359900K

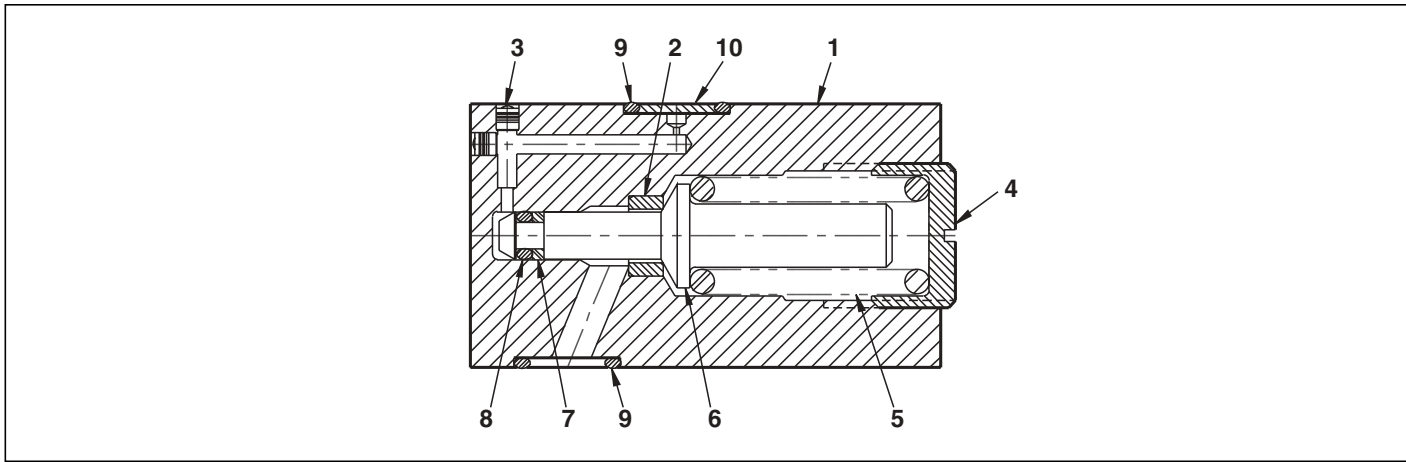


Figure 4, Bypass Valve Assembly (Late Models)

Repair Parts List for Figure 4							
Item	Part Number	Qty.	Description	Item	Part Number	Qty.	Description
1	DC617190	1	Valve Body	6	DC1117051	1	Piston
2	Not Serviceable	1	Seat (Pressed In)	7	★	1	B/U Washer
3	F100009-57	2	Expander Plug	8	★	1	O-Ring
4	DC625006	1	End Plug	9	★	2	O-Ring
5	★	1	Spring	10	★	1	Filter Disc

★ Indicates items included in and available only as part of Repair Kit DC633900K

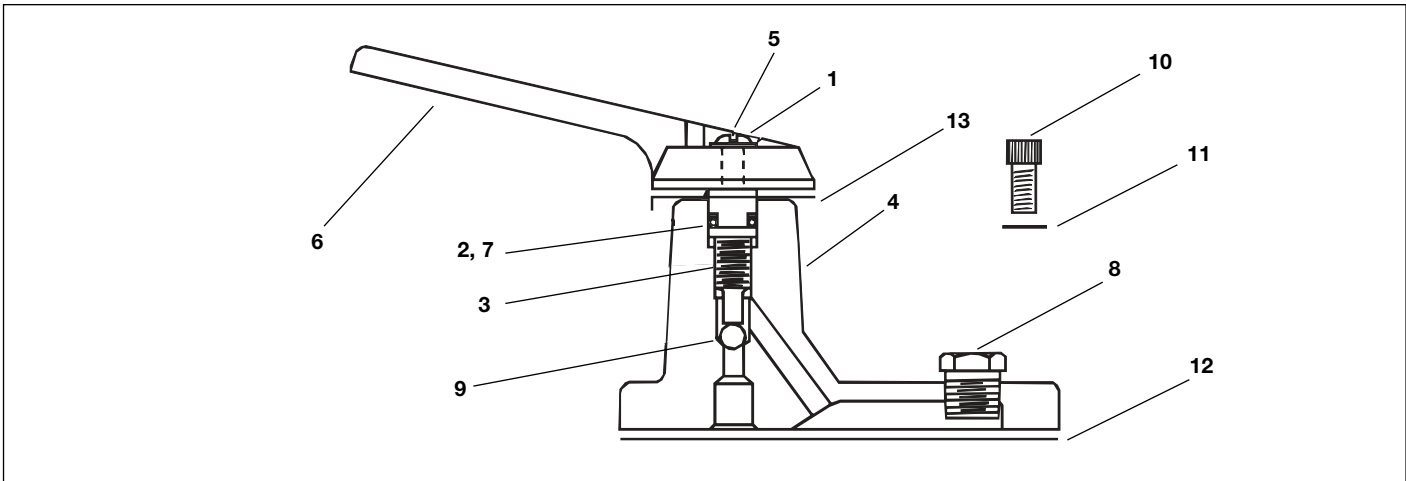


Figure 5, VM-2 Valve Assembly

Repair Parts List for Figure 5							
Item	Part Number	Qty.	Description	Item	Part Number	Qty.	Description
1	B1086108	1	Washer	7	★B1111203	1	O-Ring
2	★B1111564	1	Back-up Washer	8	R515245-2	1	Pipe Plug
3	C790010SR	1	Valve Stem	9	★B1009016	1	5/16" Ball
4	-----	1	Valve Body (Not Sold Separately, Order Complete VM-2)	10	B1351028	6	Screw
5	C302128	1	Screw	11	★C846037	6	Copper Gasket
6	Y402070	1	Valve Handle	12	★F786167	1	Valve Gasket (Not Shown)
				13	C756160	1	Retainer

★ Indicates items included in and available only as part of Repair Kit VM2K1

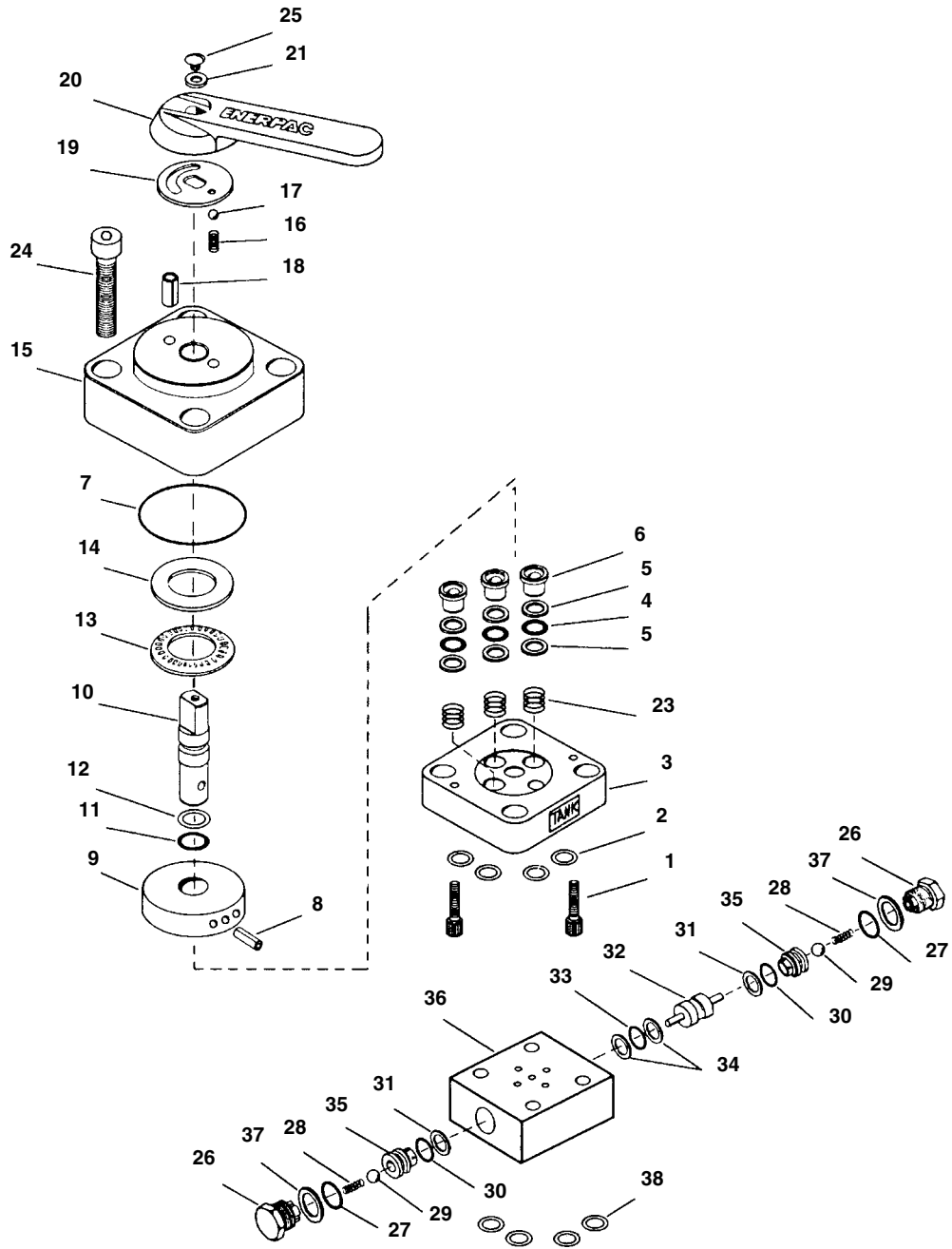


Figure 6, 3-Way and 4-Way Manual Valve Assembly

Repair Parts List for Figure 6

Item	Part Number	Qty.	Description	Item	Part Number	Qty.	Description
1	B1326028	2	Cap Screw	22	★ B1051057	1	Pin
2	★ B1111803	4	O-Ring	23	★ CB28110	3	Spring
3	CH539190	1	Body	24	B1389028	4	Capscrew (VM-3 & VM-4 Only)
4	★ B1006503	3	O-Ring		B1401028	4	Capscrew (VM-3L & VM-4L Only)
5	★ B1011564	6	Back-up Washer	25	★ A8076048	1	Screw
6	★ DA9560041	3	Shear Seal	26	R515245-2	2	Plug (VM-3L & VM-4L Only)
7	★ B1269503	1	O-Ring	27	★ B1116803	2	O-Ring (VM-3L & VM-4L Only)
8	★ B1109057	1	Spring Pin	28	★ CJ656110	2	Spring (VM-3L & VM-4L Only)
9	CH538950SR	1	Disc Ass'y. (VM-3 Only)	29	★ B1008016	2	⁹ / ₃₂ " Ball (VM-3L & VM-4L Only)
	CH542950SR	1	Disc Ass'y. (VM-3L, VM-4, VM-4L)	30	★ B1011503	2	O-Ring (VM-3L & VM-4L Only)
10	CH536104	1	Shaft	31	★ B1113564	2	Back-up Washer (VM-3L & VM-4L Only)
11	★ B1007503	1	O-Ring	32	CK598900SR	1	Piston Ass'y. (VM-3L Only)
12	★ B1012564	1	Back-up Washer		Y128900W	1	Piston Ass'y. (VM-4L Only)
13	CB328281	1	Needle Bearing	33	★ B1009503	1	O-Ring (VM-3L & VM-4L Only)
14	CB327101	1	Bearing Plate	34	★ B1111564	2	Back-up Washer (VM-3L & VM-4L Only)
15	CB324001	1	Cap	35	Y126290	2	Seat (VM-3L & VM-4L Only)
16	★ A8039110	1	Spring	36	CL889950SR	1	Body (VM-3L only)
17	★ B1006016	1	⁷ / ₃₂ " Ball		CL888950SR	1	Body (VM-4L only)
18	★ B1126057	1	Spring Pin	37	★ CR355167	2	Gasket
19	A8005071	1	Detent Disc	38	★ B111803	4	O-ring (VM-3L and VM-4L only)
20	Y325070	1	Valve Handle				
21	★ B1086108	1	Washer				

★ Items included in and available only as part of Repair Kit VM4K3.

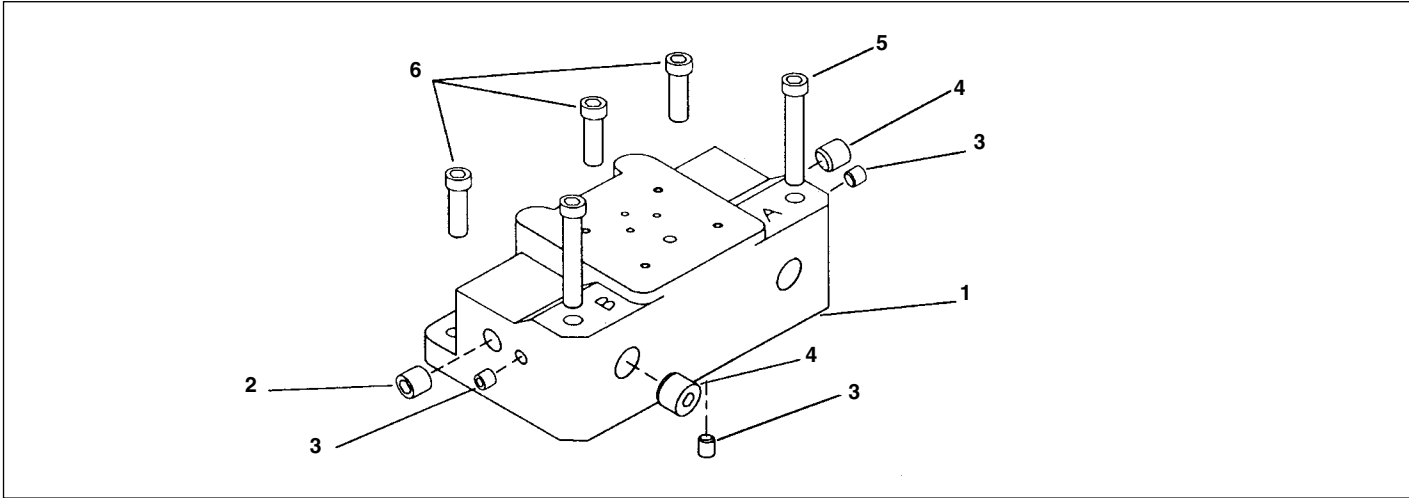


Figure 7, Manual Valve Mounting Block Assembly

Repair Parts List for Figure 7							
Item	Part Number	Qty.	Description	Item	Part Number	Qty.	Description
1	CB303038	1	Adaptor Block	4	A1009245	1	Pipe Plug (VM-3, VM-3L)
2	DA6192245	1	Pipe Plug	5	B1359028	2	Capscrew
3	A1006245	2	Pipe Plug	6	B1351028	3	Capscrew

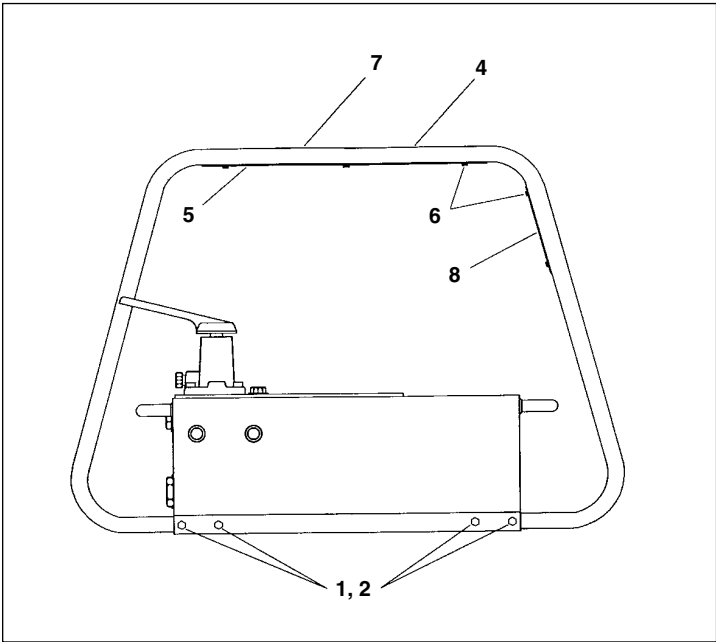


Figure 8, Roll Bar Assembly (shown without motor)

Repair Parts List for Figure 8			
Item	Part Number	Qty.	Description
1	CBB627046-1A	8	Screw
2	BSS5632D	8	Lock Nut
4	DA4254201	2	Roll Bar
5	DA4340098	1	Cover Plate (8 liter models)
	DA4341098	1	Cover Plate (20 liter models)
6	CB558028	10	Self-Tapping Screw
7	CL544026	1	Decal
8	DA4518098	1	Plate (8 liter models)
	DA4517098	1	Plate (20 liter models)

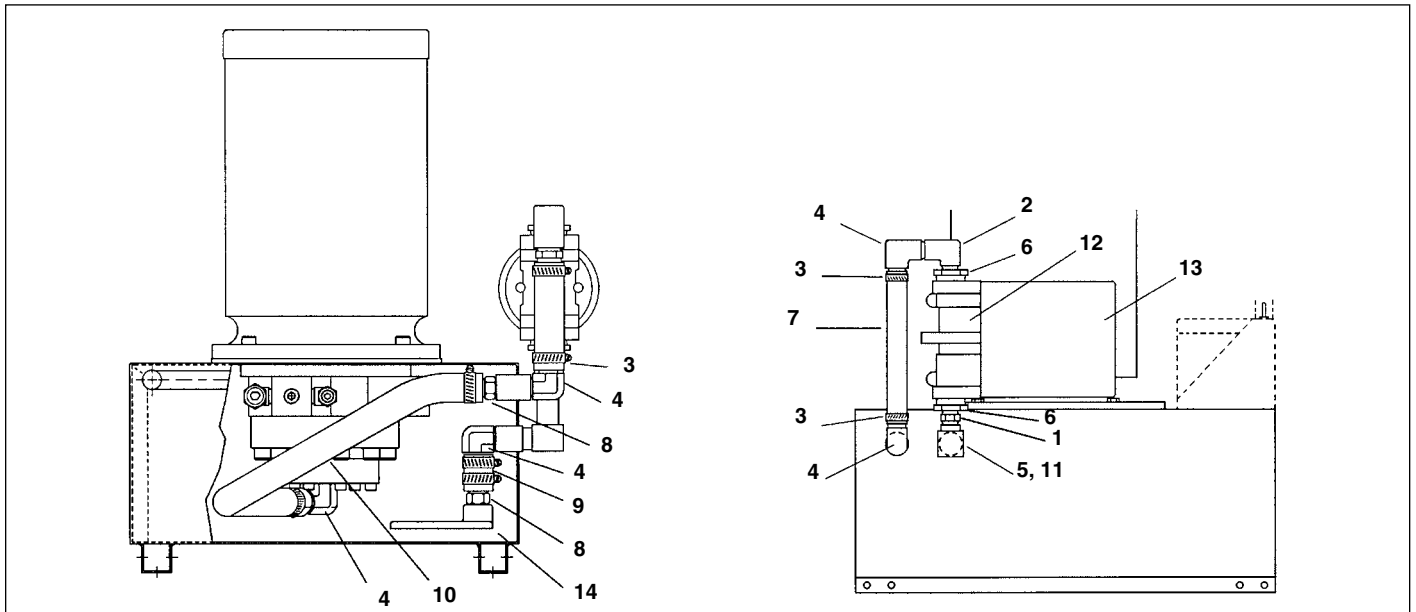


Figure 9, Optional Intake Filter

Repair Parts List for Figure 9

Item	Part Number	Qty.	Description	Item	Part Number	Qty.	Description
1	CJ651096	1	Nipple, 3/8"NPT (2 & 5 Gal.)	8	CB117096	2	Connector, 3/8"NPT Hose Barb
	DA4332431	1	Nipple, 3/8"NPT (10 Gallon)	9	DA3606268SR	1	2" Hose
2	CJ655291	1	Street Elbow, 3/8"NPT	10	DA3607268SR	1	15.25" Hose
3	CB40299	6	Hose Clamp	11	DA541095	1	Nipple, 3/8"NPT
4	CB46096	4	Elbow, 3/8" NPT x 5/8" Hose Barb	12	DA4333118	1	Manifold & Filter Assembly
5	CN330096	1	Elbow, 3/8"NPT Female	13	PFE-250	1	Filter Element
6	F100095-26	2	Reducer	14	CV838950SR	1	Intake Filter Assembly
7	DA4334268	1	6.125" Hose				

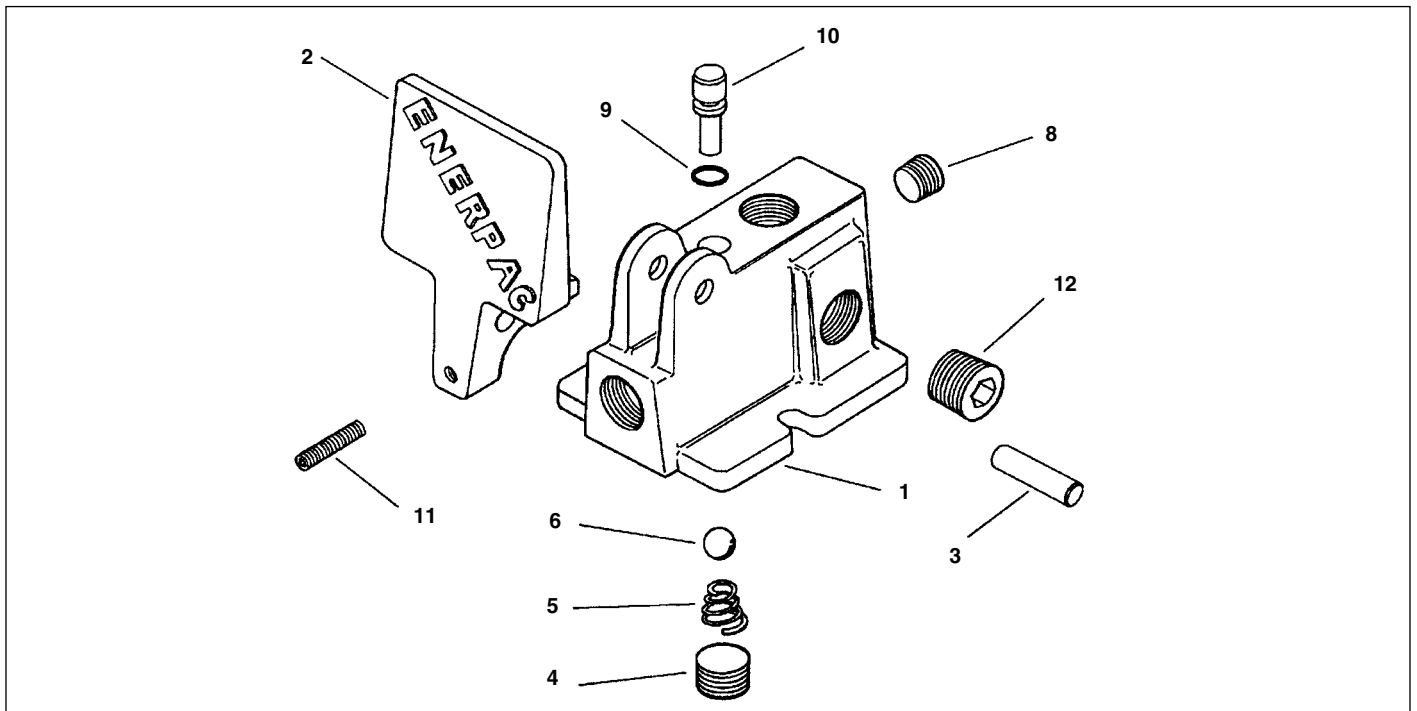


Figure 10, VA-2 Air Valve

Repair Parts List for Figure 10

Item	Part Number	Qty.	Description	Item	Part Number	Qty.	Description
1	Y414190	1	Valve Body	8	A1007245	1	Flush Plug
2	Y411070	1	Handle	9	B1003503	1	O-Ring
3	B1132057	1	Pin	10	Y370030	1	Plunger
4	A1008245	1	Flush Plug	11	Y421028	1	Screw
5	Y404110	1	Spring	12	A1009245	1	Flush Plug
6	Y415016	1	3/8" Ball				

Enerpac Worldwide Locations◆ e-mail: info@enerpac.com◆ internet: www.enerpac.com**Australia**

ENERPAC, Applied Power Australia Ltd.
Block V Unit 3
Regents Park Estate
391 Park Road
Regents Park NSW 2143
(P.O. Box 261) Australia
Tel: +61 297 438 988
Fax: +61 297 438 648

Canada

Actuant Canada Corporation
6615 Ordan Drive, Unit 14-15
Mississauga, Ontario L5T 1X2
Tel: +1 905 564 5749
Fax: +1 905 564 0305

Toll Free:

Tel: +1 800 268 4987
Fax: +1 800 461 2456

China

Applied Power China Ltd.
1F, 269 Fute N. Road
Waigaoqiao Free Trade Zone
Pudong New District
Shanghai, 200 131
China
Tel: +86 21 5866 9099
Fax: +86 21 5866 7156

**France, Turkey, Greece,
Africa, Middle East**

ENERPAC S.A.
B.P. 200
Parc d'Activités
du Moulin de Massy
F-91882 Massy CEDEX (Paris) France
Tel: +33 1 601 368 68
Fax: +33 1 692 037 50

**Germany, Switzerland,
Austria, Eastern Europe**

ENERPAC
Applied Power GmbH
P.O. Box 300113
D-40401 Düsseldorf
Germany
Tel: +49 211 471 490
Fax: +49 211 471 49 28

Hong Kong

ENERPAC
Room 907 Workingberg
Commercial Building
41-47 Marble Road
North Point
Tel: +852-2561 6295
Fax: +852-2561 6772

India

ENERPAC
Hydraulics (India) Pvt Ltd
Plot No. A-571
MIDC, TTC Industrial Area
Mahape-400 701
Navi Mumbai, India
Tel: +91 22 769 47 78
Fax: +91 22 769 84 73

Italy

ENERPAC
Applied Power Italiana S.p.A.
Via Canova 4
20094 Corsico (Milano)
Tel: +39 02 4861 1110
Fax: +39 02 4860 1288

Japan

Applied Power Japan Ltd.
1-1-11, Shimomae
Toda-shi
Saitama Pref.
Japan 335-0016
Tel: +81-48-430-2311
Fax: +81-48-430-1117

Mexico

ENERPAC Applied Power
Mexico S.A. de C.V.
Avenida Principal
La Paz #100
Fracc. Industrial La Paz
42092 Pachuca, Hidalgo
Tel: +52 771 337 00
Fax: +52 771 838 00

**The Netherlands, Belgium,
Luxembourg, Sweden, Denmark,
Norway, Finland, United Kingdom,
Ireland**

ENERPAC B.V.
Storkstraat 25
P.O. Box 269, 3900 AG Veenendaal
The Netherlands
Tel: +31 318 535 911
Fax: +31 318 525 613
+31 318 535 848
UK, Ireland
Tel: +44 01527 598 900
Fax: +44 01527 585 500

Singapore

Applied Power Asia Pte Ltd
No. 8, Ang Mo Kio,
Industrial Park 2
#01-00
Singapore 569500
Thomson Road, P.O. Box 114
Singapore 915704
Tel: +65 484 5108
Fax: +65 484 5669

South Korea

ENERPAC
Applied Power Korea Ltd.
163-12 Dodang-Dong
Wonmi-Ku, Buchun-shi
Kyunggi-Do
Republic of Korea
Tel: +82 32 675 08 36
Fax: +82 32 675 30 02/73

Spain, Portugal

ENERPAC
Applied Power International S.A.
Avda. Camino de lo Cortao
21 - Nave 3
San Sebastian de los Reyes
28709 Madrid
Spain
Tel: +34 91 661 11 25
Fax: +34 91 661 47 89

**USA, Latin America
and Caribbean**

ENERPAC
P.O. Box 3241
6101 N. Baker Road
Milwaukee, WI 53209 USA
Tel: +1 262 781 6600
Fax: +1 262 783 9562

User inquiries:

+1 800 433 2766

Distributor inquiries/orders:

+1 800 558 0530

All Enerpac products are guaranteed against defects in workmanship and materials for as long as you own them.
For your nearest authorized Enerpac Service Center, visit us at www.enerpac.com

092501

NS1299B