

# HYDRAULIC TOOLS

NS Series – Nut Splitters



NS Series Shown

**Nut Range** .....▶ .5 - 2.88 in.  
**Weight** .....▶ 1.8 - 75.1 lbs.  
**Maximum Pressure** .....▶ 10,000 psi

- ▶ Cuts hardened nuts up to grade 8 & 2H.
- ▶ Replacement chisel and set screws included.
- ▶ Cuts nuts from .5” to 2.88”.
- ▶ Rugged carrying case included.
- ▶ Not designed to cut square nuts.

Hydraulic Tools



**HOSES - pages 78 - 79**

Heavy duty and thermo plastic hydraulic hoses to meet your requirements and safety factor.



**THINK SAFETY**

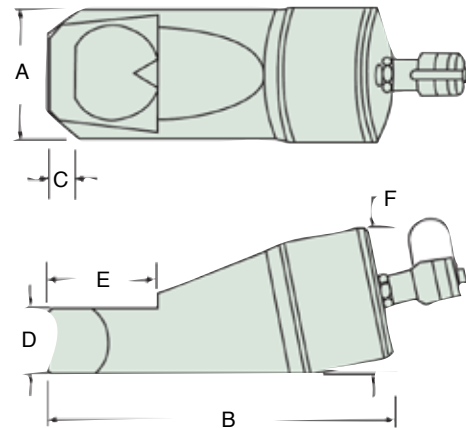
Please refer to pages 4&5 for a complete list of safety tips and recommendations.



**COUPLERS - pages 74 - 75**

High flow quick disconnect couplers provide a quick change to a variety of pumps.

Refineries, steel mills and power plants rely heavily on Simplex nut splitters for removing stubborn or rusted nuts easily and safely. ▼



Model	Stud Diameter (in)	Nut A/F (in)	A (in)	B (in)	C (in)	D (in)	E (in)	F (in)	Wgt. (lbs.)	Suggested Hand Pump
NS1319	.25 - .44	.5 - .75	1.57	4.76	.28	.75	1.14	1.93	1.8	P42 / P72
NS1924	.44 - .56	.75 - .94	2.13	5.77	.39	.98	1.57	2.42	4.4	P42 / P72
NS2432	.56 - .75	.94 - 1.13	2.52	7	.51	1.18	2.05	2.99	6.6	P42 / P72
NS3241	.75 - 1	1.13 - 1.56	2.97	8.09	.63	1.42	2.56	3.38	9.7	P42 / P72
NS4150	1 - 1.25	1.56 - 2	3.70	9.61	.83	1.77	3.00	4.17	18	P140
NS5060	1.25 - 1.5	2 - 2.25	4.17	10.60	.94	2.13	3.62	4.90	26	P140
NS6075	1.5 - 1.87	2.38 - 2.88	6.26	14.37	1.06	2.95	4.37	7.20	75.1	P140