



Repair Parts Sheet

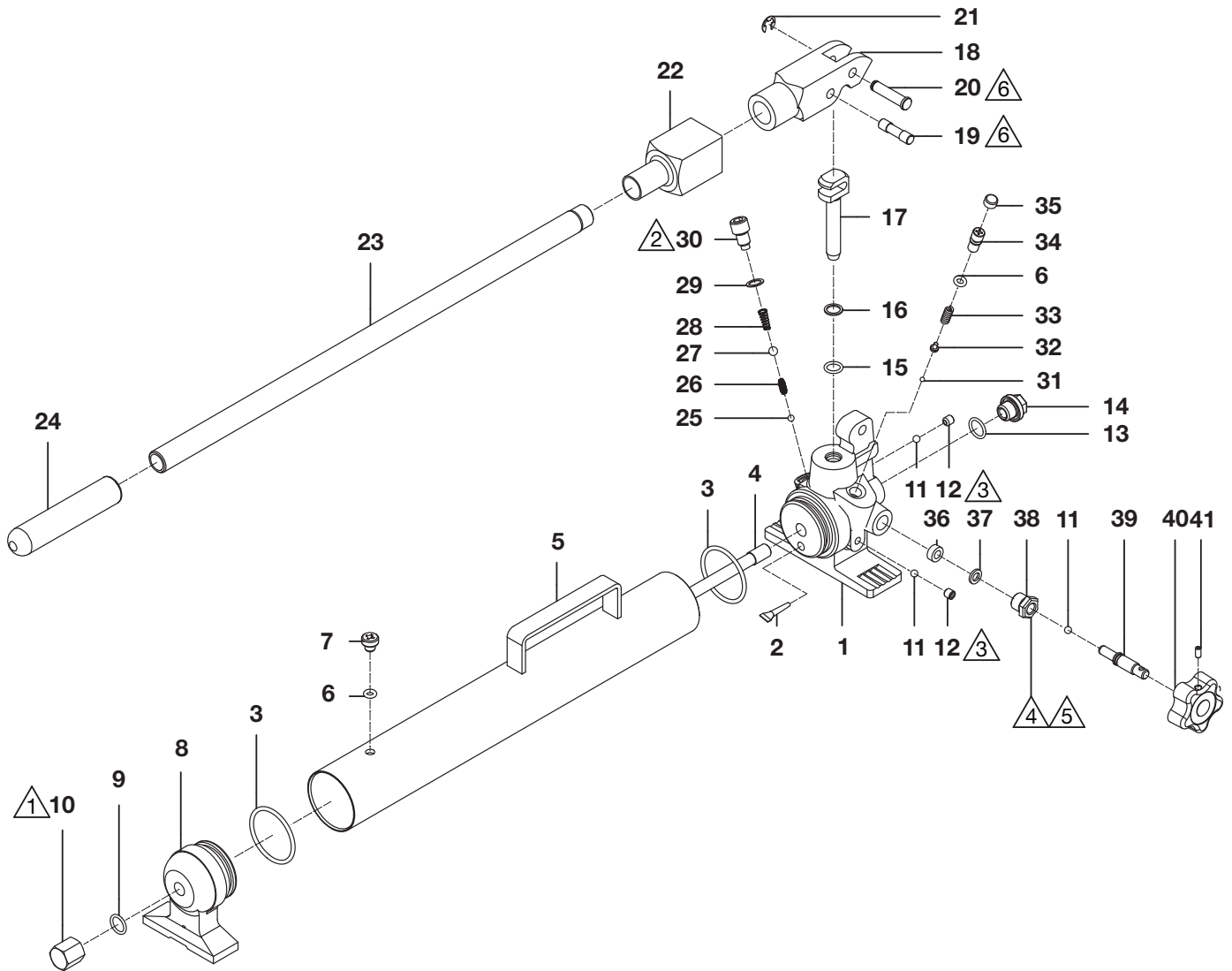
Hand Pump P41

54222 Rev. C 12/2019

Product Date Code Beginning With "B"

To Protect Your Warranty, Use Only SIMPLEX Hydraulic Oil.

Simplex recommends that all kit components be installed to ensure optimum performance of the repaired product.



Notes:

- | | |
|------------------------|--|
| △1 Torque to 30-35 Nm. | △4 Torque to 19-21 Nm. |
| △2 Torque to 40-42 Nm. | △5 Apply Loctite 277. |
| △3 Torque to 10-12 Nm. | △6 Apply roller grease to contact surfaces of pin and plunger. |

Repair Parts List			
Item No.	Part Number	Qty.	Description
1	6067189	1	Pump Housing
2	6067001	1	Oil Filter
3	★ 6067003	2	O-Ring
4	6067002	1	Tie Rod
5	6067004	1	Reservoir
6	★ 6067201	2	O-Ring
7	6067245	1	Air Release Screw
8	6067005	1	Tail Base
9	★ 6067006	1	O-Ring
10	6067007	1	Nut
11	⊕ 6067300	3	Steel Ball
12	6067244	2	Set Screw
13	★ 6045170	1	O-Ring
14	6045171	1	Nipple
15	+★ 6067020	1	O-Ring
16	+★ 6067021	1	Back-Up Ring
17	+ 6067041	1	Pump Piston
18	* 6067115	1	Yoke
19	* 6067118	1	Piston Pin
20	* 6067027	1	Yoke Pin
21	* 6067026	1	E-Ring
22	* 6067053	1	Yoke Cover

Repair Parts List (Continued)			
Item No.	Part Number	Qty.	Description
23	* 6067024	1	Handle
24	* 6067234	1	Handle Grip
25	6045053	1	Steel Ball
26	6067117	1	Inlet Ball Spring
27	6067013	1	Steel Ball
28	6067049	1	Outlet Ball Spring
29	★ 6067014	1	Copper Washer
30	6067015	1	Valve Cover Screw
31	6067034	1	Steel Ball
32	6067033	1	Spring End Cap
33	6067120	1	H.P. Spring
34	6067029	1	Overload Cover Screw
35	6067084	1	Cap
36	⊕ 6067037	1	Release Valve Packing
37	⊕ 6067282	1	Washer
38	⊕ 6067038	1	Release Nut
39	⊕ 6067116	1	Release Valve Screw
40	⊕ 6045077	1	Release Knob
41	⊕ 6045078	1	Screw
42	◆ DD5629026	1	Model Decal, CE

Notes:

- ★ Included in Seal Kit DD8064900.
- ◆ Included in Decal Kit DD8065900.
- * Included in Handle kit DD8066900.
- ⊕ Included in Release Handle Kit DD8067900.
- + Included in Plunger Kit DD8068900.



N86 W12500 Westbrook Crossing
Menomonee Falls, WI 53051
Phone - USA Only: 1 (800) 323-9114
Phone - Inside/Outside USA: 1 (262) 293-1575
Fax: 1 (262) 597-1127
www.tksimplex.com