

**HIGH-
TONNAGE
CYLINDERS**

RLL, RCX, RCG,
RCL, RCR-SERIES

HYDRAULIC CYLINDERS

For Your Heavy Lifting Applications



SIMPLEX®

HIGH-TONNAGE CYLINDERS

RLL, RCX, RCG, RCL, RCR-Series Cylinders



Simplex High-Tonnage Cylinders are the go-to cylinder series for multipoint heavy lifting applications. With unique features differentiating each series within the range, there is an ideal solution for all types of applications.

RCX, RCG, RCL, RCR-Series Cylinders

- Replaceable wear bands improve seal life and side load capacity.
- Custom strokes and capacities up to 1000 ton.

RLL-Series – Low-Profile Pancake Lock Nut

- Load-return – for weighing, lifting and positioning applications.
- Red band warns operator to end of stroke, over-flow port prevents over-stroke without stop ring.
- Body, lock nut and saddle feature black nitride coating to improve corrosion and wear resistance.

RCX-Series – Low-Profile Load-Return

- Body features black nitride coating up to 250 ton to improve corrosion and wear resistance.
- Load-return – for weighing, lifting and positioning applications.
- Red band warns operator to end of stroke, over-flow port prevents over-stroke without stop ring.

RCG-Series – Single-Acting Load-Return

- Load-Return.
- Mechanical end of stroke avoids over-travel at full pressure.

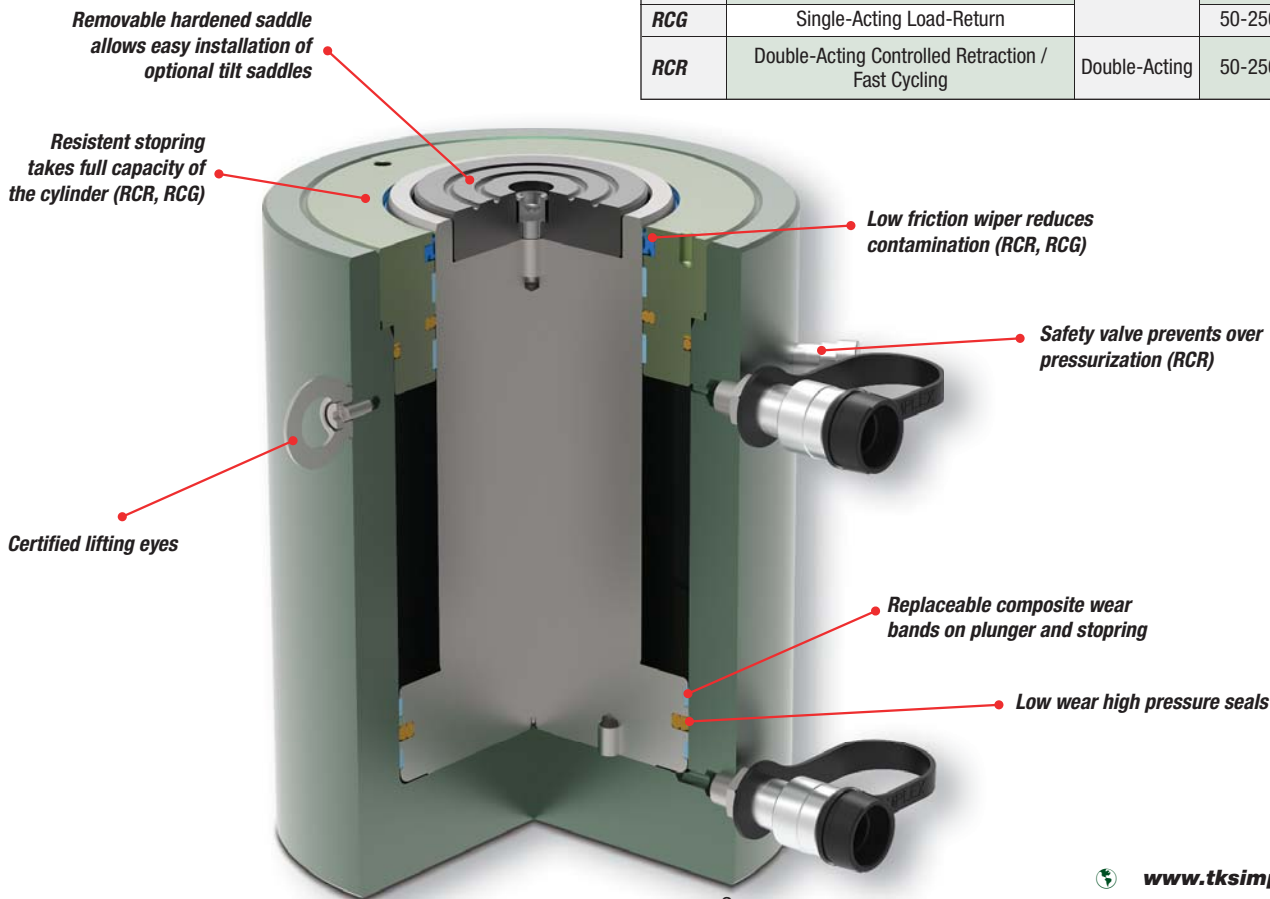
RCL-Series – Lock Nut Load-Return

- Load-Return.
- Lock nut provides safe mechanical load holding for an extended period of time.
- Red band warns operator to end of stroke, over-flow port prevents over-stroke without stop ring.

RCR-Series – Double-Acting Hydraulic Return

- Hydraulic Return for controlled retraction.
- Safety valve on the retract side prevents accidental over-pressurization.

| Cylinder Series | Description / Applications | Cylinder Type | Capacity (tons) | Strokes (in) |
|-----------------|--|---------------|-----------------|--------------|
| RLL | Single-Acting Low-Profile Pancake Lock Nut | Single-Acting | 55-575 | 1.77-1.97 |
| RCX | Single-Acting Low-Profile Load-Return | | 150-575 | 1.97-11.81 |
| RCL | Single-Acting Mechanical Load Holding / Lock Nut Load-Return | | 30-250 | 1.97-11.81 |
| RCG | Single-Acting Load-Return | | 50-250 | 1.97-11.81 |
| RCR | Double-Acting Controlled Retraction / Fast Cycling | Double-Acting | 50-250 | 1.97-11.81 |





RLL-2502, RLL-1502, RLL502 Shown

Capacity Range▶ 55 - 575 tons

Stroke Range▶ 1.77 - 1.97 in.

Maximum Pressure▶ 10,150 psi

- ▶ Lock nut tested to 150% of rated load.
- ▶ Lock nut provides safe mechanical load holding for an extended period of time.
- ▶ Red band warns operator to end of stroke, over-flow port prevents over-stroke.
- ▶ Built-in tilt saddle to improve side-load resistance.
- ▶ Body, lock nut and saddle feature black nitride coating to improve corrosion and wear resistance.
- ▶ Low-Profile for use in confined areas.



POWER PUMPS

Simplex offers a wide variety of lightweight power pumps to fit any application.



TILT SADDLES

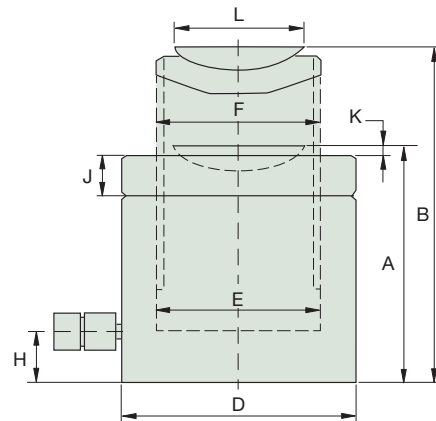
All RLL-Series cylinders include a built-in Tilt Saddle.



HOSES

Heavy-duty and thermo-plastic hydraulic hoses to meet your requirements and safety factor.

Simplex RLL-Series cylinders are designed for where space is at a minimum. ▼



| Model | Capacity (ton) | Stroke (in) | Oil Capacity Required (cu.in.) | A | B | D Outside Diameter (in) | E Cylinder Bore Diameter (in) | F Plunger Diameter (Threaded) (mm) | H Base to Adv. Port (in) | J Lock Nut Height (in) | K Saddle Pro- trusion from Plunger (in) | L Saddle Diameter (in) | Effective Area (sq.in.) | Wt. (lbs) |
|----------------|-------------------|----------------|---|-----------------------------|----------------------------|----------------------------------|---|--|-----------------------------------|---------------------------------|---|---------------------------------|-------------------------------|--------------|
| | | | | Collapsed Height (in) | Extended Height (in) | | | | | | | | | |
| RLL502 | 55 | 1.97 | 21.66 | 4.92 | 6.89 | 4.92 | 3.74 | Tr 95x4 | 0.79 | 0.83 | 0.24 | 3.62 | 10.97 | 24 |
| RLL1002 | 104 | 1.77 | 36.43 | 5.39 | 7.17 | 6.50 | 5.12 | Tr 130x6 | 0.91 | 1.22 | 0.31 | 4.96 | 20.57 | 49 |
| RLL1502 | 158 | 1.77 | 55.23 | 5.83 | 7.60 | 8.07 | 6.30 | Tr 160x6 | 1.10 | 1.50 | 0.35 | 5.83 | 31.17 | 86 |
| RLL2502 | 247 | 1.77 | 86.23 | 6.10 | 7.87 | 10.04 | 7.87 | Tr 200x6 | 1.26 | 1.57 | 0.39 | 6.18 | 48.70 | 137 |
| RLL3002 | 341 | 1.77 | 119.11 | 6.81 | 8.58 | 12.20 | 9.25 | Tr 235x6 | 1.50 | 1.77 | 0.43 | 8.46 | 67.22 | 214 |
| RLL4002 | 450 | 1.77 | 157.23 | 7.09 | 8.86 | 13.78 | 10.63 | Tr 270x6 | 1.73 | 1.97 | 0.39 | 10.24 | 88.75 | 287 |
| RLL5002 | 575 | 1.77 | 206.74 | 7.68 | 9.45 | 15.75 | 12.01 | Tr 305x6 | 1.97 | 2.36 | 0.39 | 11.61 | 113.24 | 406 |

HIGH-TONNAGE CYLINDERS

RCX-Series - Low-Profile Load-Return



Capacity Range▶ 158 - 575 tons

Stroke Range▶ 1.97 - 11.81 in.

Maximum Pressure▶ 10,150 psi

- ▶ Load-return. For weighing, lifting and positioning applications in Civil Engineering.
- ▶ Red band warns operator to end of stroke, over-flow port prevents over-stroke, without stop-ring.
- ▶ Black nitrided body, up to 250 ton.
- ▶ Replaceable wear bands improve seal life and side load capacity.
- ▶ Custom strokes and capacities up to 1000 ton.
- ▶ Optional tilt saddles.



POWER PUMPS

Simplex offers a wide variety of lightweight power pumps to fit any application.



OPTIONAL TILT SADDLES

Highly recommended for side load applications.



HOSES

Heavy-duty and thermo plastic hydraulic hoses to meet your requirements and safety factor.



LIFTING EYES

Certified lifting eyes.



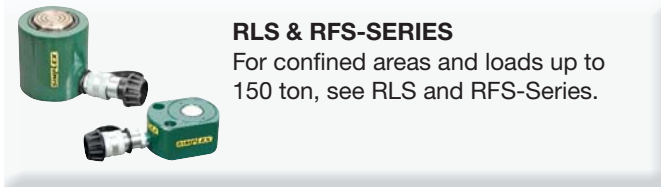
| <i>Model</i> | Capacity (tons) | Stroke (in) | Oil Capacity Required (cu.in.) | Effective Area (sq.in.) | Wt. (lbs) |
|-----------------|--------------------|----------------|--------------------------------------|-------------------------------|--------------|
| <i>RCX1502</i> | 158 | 1.97 | 61.35 | 31.16 | 95 |
| <i>RCX1506</i> | | 5.91 | 184.04 | 31.16 | 164 |
| <i>RCX15012</i> | | 11.81 | 368.09 | 31.16 | 256 |
| <i>RCX2502</i> | 247 | 1.97 | 95.86 | 48.69 | 165 |
| <i>RCX2506</i> | | 5.91 | 287.57 | 48.69 | 266 |
| <i>RCX25012</i> | | 11.81 | 575.14 | 48.69 | 412 |
| <i>RCX3002</i> | 341 | 1.97 | 132.34 | 67.23 | 243 |
| <i>RCX3006</i> | | 5.91 | 397.02 | 67.23 | 388 |
| <i>RCX30012</i> | | 11.81 | 794.05 | 67.23 | 589 |
| <i>RCX4002</i> | 450 | 1.97 | 174.70 | 88.75 | 356 |
| <i>RCX4006</i> | | 5.91 | 524.09 | 88.75 | 538 |
| <i>RCX40012</i> | | 11.81 | 1,048.18 | 88.75 | 803 |
| <i>RCX5002</i> | 575 | 1.97 | 222.92 | 113.25 | 498 |
| <i>RCX5006</i> | | 5.91 | 668.77 | 113.25 | 736 |
| <i>RCX50012</i> | | 11.81 | 1,337.55 | 113.25 | 1082 |



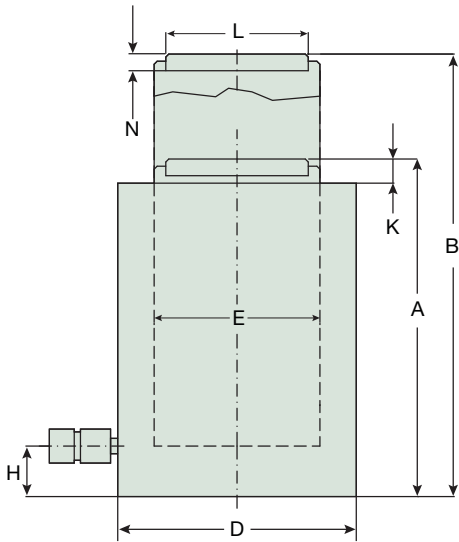
RCG-SERIES
For mechanical stop ring, see RCG-Series.



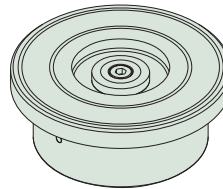
THINK SAFETY
Manufacturer's rating of load and stroke are maximum safe limits.
Good practice encourages using only 80% of these ratings!



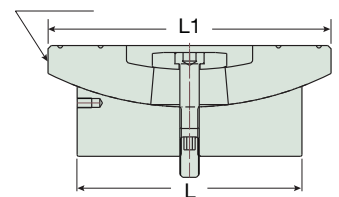
RLS & RFS-SERIES
For confined areas and loads up to 150 ton, see RLS and RFS-Series.



Optional tilt saddle.



TILTING ±5°



| A | B | D | E | H | K | L | N | Cylinder Model |
|------------------|-----------------|------------------|------------------------|-------------------|--------------------------------|-----------------|---------------|-----------------|
| Collapsed Height | Extended Height | Outside Diameter | Cylinder Bore Diameter | Base to Adv. Port | Saddle Protrusion from Plunger | Saddle Diameter | Saddle Height | |
| (in) | (in) | (in) | (in) | (in) | (in) | (in) | (in) | |
| 6.30 | 8.27 | 8.27 | 6.30 | 1.57 | 0.24 | 3.70 | 0.79 | RCX1502 |
| 10.79 | 16.69 | 8.27 | 6.30 | 1.57 | 0.24 | 3.70 | 0.79 | RCX1506 |
| 16.93 | 28.72 | 8.27 | 6.30 | 1.57 | 0.24 | 3.70 | 0.79 | RCX15012 |
| 7.09 | 9.06 | 10.24 | 7.87 | 1.97 | 0.24 | 4.45 | 0.79 | RCX2502 |
| 11.46 | 17.36 | 10.24 | 7.87 | 1.97 | 0.24 | 4.45 | 0.79 | RCX2506 |
| 17.76 | 29.57 | 10.24 | 7.87 | 1.97 | 0.24 | 4.45 | 0.79 | RCX25012 |
| 7.60 | 9.57 | 12.01 | 9.25 | 2.17 | 0.31 | 5.51 | 1.18 | RCX3002 |
| 12.17 | 18.07 | 12.01 | 9.25 | 2.17 | 0.31 | 5.51 | 1.18 | RCX3006 |
| 18.46 | 30.28 | 12.01 | 9.25 | 2.17 | 0.31 | 5.51 | 1.18 | RCX30012 |
| 8.46 | 10.43 | 13.78 | 10.63 | 2.56 | 0.39 | 6.26 | 1.18 | RCX4002 |
| 12.80 | 18.70 | 13.78 | 10.63 | 2.56 | 0.39 | 6.26 | 1.18 | RCX4006 |
| 19.09 | 30.91 | 13.78 | 10.63 | 2.56 | 0.39 | 6.26 | 1.18 | RCX40012 |
| 9.06 | 11.03 | 15.75 | 12.01 | 2.95 | 0.39 | 7.05 | 1.18 | RCX5002 |
| 13.39 | 19.29 | 15.75 | 12.01 | 2.95 | 0.39 | 7.05 | 1.18 | RCX5006 |
| 19.69 | 31.50 | 15.75 | 12.01 | 2.95 | 0.39 | 7.05 | 1.18 | RCX50012 |

| With Tilt Saddle | | |
|------------------|---------|-------------------|
| A (in) | L1 (in) | Tilt Saddle Model |
| 7.05 | 3.82 | CATS150 |
| 11.54 | 3.82 | CATS150 |
| 17.68 | 3.82 | CATS150 |
| 7.99 | 4.96 | CATS200 |
| 12.36 | 4.96 | CATS200 |
| 18.66 | 4.96 | CATS200 |
| 9.13 | 6.89 | CATS300 |
| 13.70 | 6.89 | CATS300 |
| 20.00 | 6.89 | CATS300 |
| 10.35 | 8.27 | CATS400 |
| 14.69 | 8.27 | CATS400 |
| 20.98 | 8.27 | CATS400 |
| 10.91 | 9.06 | CATS500 |
| 15.24 | 9.06 | CATS500 |
| 21.54 | 9.06 | CATS500 |

HIGH-TONNAGE CYLINDERS

RCG-Series - Single-Acting, Load-Return



Capacity Range▶ 55 - 247 tons
 Stroke Range▶ 5.91 - 11.81 in.
 Maximum Pressure▶ 10,150 psi

- ▶ Load-return.
- ▶ Mechanical end of stroke avoids over travel at full pressure.
- ▶ Replaceable wear bands improve seal life and side load capacity.
- ▶ Custom strokes and capacities up to 1000 ton.
- ▶ Optional tilt saddles.



POWER PUMPS

Simplex offers a wide variety of lightweight power pumps to fit any application.



OPTIONAL TILT SADDLES

Highly recommended for side load applications.



HOSES

Heavy-duty and thermo plastic hydraulic hoses to meet your requirements and safety factor.



LIFTING EYES

Certified lifting eyes.



| Model | Capacity (tons) | Stroke (in) | Oil Capacity Required (cu.in.) | Effective Area (sq.in.) | Wt. (lbs) |
|-----------------|-----------------|-------------|--------------------------------|-------------------------|-----------|
| RCG506 | 55 | 5.91 | 64.88 | 10.99 | 58 |
| RCG5012 | | 11.81 | 129.76 | 10.99 | 84 |
| RCG1006 | 104 | 5.91 | 121.50 | 20.57 | 102 |
| RCG10012 | | 11.81 | 242.99 | 20.57 | 149 |
| RCG1502 | 158 | 1.97 | 61.35 | 31.16 | 118 |
| RCG1506 | | 5.91 | 184.04 | 31.16 | 162 |
| RCG15012 | | 11.81 | 368.09 | 31.16 | 230 |
| RCG2502 | 247 | 1.97 | 95.86 | 48.69 | 198 |
| RCG2506 | | 5.91 | 287.57 | 48.69 | 265 |
| RCG25012 | | 11.81 | 575.14 | 48.69 | 372 |



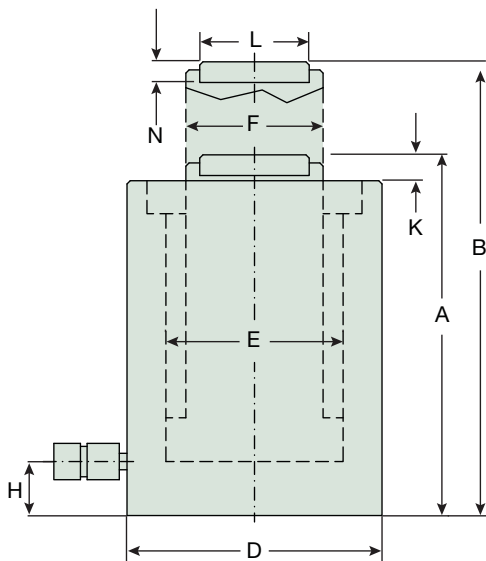
RCR-SERIES DOUBLE-ACTING CYLINDERS
For hydraulic and controlled return, use RCR-Series.



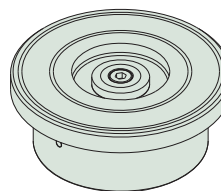
THINK SAFETY
Manufacturer's rating of load and stroke are maximum safe limits.
Good practice encourages using only 80% of these ratings!



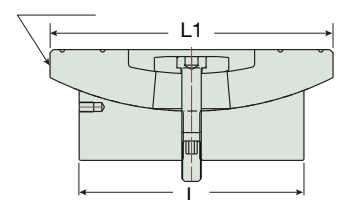
RLS-SERIES
For confined areas and loads up to 100 ton, see RLS-Series.



Optional tilt saddle.



TILTING ±5°



| A | B | D | E | F | H | K | L | N | Cylinder Model |
|-----------------------|----------------------|-----------------------|-----------------------------|-----------------------|------------------------|-------------------------------------|----------------------|--------------------|----------------|
| Collapsed Height (in) | Extended Height (in) | Outside Diameter (in) | Cylinder Bore Diameter (in) | Plunger Diameter (in) | Base to Adv. Port (in) | Saddle Protrusion from Plunger (in) | Saddle Diameter (in) | Saddle Height (in) | |
| 12.05 | 17.95 | 4.92 | 3.74 | 2.95 | 0.98 | 0.24 | 1.97 | 0.79 | RCG506 |
| 18.16 | 29.96 | 4.92 | 3.74 | 2.95 | 0.98 | 0.24 | 1.97 | 0.79 | RCG5012 |
| 11.65 | 17.56 | 6.69 | 5.12 | 3.94 | 1.18 | 0.24 | 2.80 | 0.79 | RCG1006 |
| 17.77 | 29.58 | 6.69 | 5.12 | 3.94 | 1.18 | 0.24 | 2.80 | 0.79 | RCG10012 |
| 8.39 | 10.35 | 8.27 | 6.30 | 4.33 | 1.57 | 0.24 | 3.70 | 0.79 | RCG1502 |
| 12.53 | 18.44 | 8.27 | 6.30 | 4.33 | 1.57 | 0.24 | 3.70 | 0.79 | RCG1506 |
| 18.83 | 30.64 | 8.27 | 6.30 | 4.33 | 1.57 | 0.24 | 3.70 | 0.79 | RCG15012 |
| 9.17 | 11.14 | 10.24 | 7.87 | 5.51 | 1.97 | 0.24 | 4.45 | 0.98 | RCG2502 |
| 13.11 | 19.02 | 10.24 | 7.87 | 5.51 | 1.97 | 0.24 | 4.45 | 0.98 | RCG2506 |
| 19.62 | 31.43 | 10.24 | 7.87 | 5.51 | 1.97 | 0.24 | 4.45 | 0.98 | RCG25012 |

| With Tilt Saddle | | |
|------------------|---------|-------------------|
| A (in) | L1 (in) | Tilt Saddle Model |
| 12.60 | 2.80 | CATS50 |
| 18.71 | 2.80 | CATS50 |
| 12.05 | 2.80 | CATS100 |
| 18.16 | 2.80 | CATS100 |
| 9.13 | 3.82 | CATS150 |
| 13.28 | 3.82 | CATS150 |
| 19.58 | 3.82 | CATS150 |
| 9.88 | 4.96 | CATS200 |
| 13.82 | 4.96 | CATS200 |
| 20.33 | 4.96 | CATS200 |

HIGH-TONNAGE CYLINDERS

RCL-Series - Lock Nut Load-Return



Capacity Range▶ 34 - 247 tons
 Stroke Range▶ 1.97 - 11.81 in.
 Maximum Pressure▶ 10,150 psi

- ▶ Lock nut tested to 150% of rated load.
- ▶ Lock nut provides safe mechanical load holding for an extended period of time.
- ▶ Red band warns operator to end of stroke, over-flow port prevents over-stroke, without stop ring.
- ▶ As custom, possibility to include stop ring for mechanical end of stroke.
- ▶ Body, lock nut and saddle feature black nitride coating to improve corrosion and wear resistance.
- ▶ Load-return.
- ▶ Replaceable wear bands improve seal life and side load capacity.
- ▶ Custom strokes and capacities up to 1000 ton.
- ▶ Optional tilt saddles.



POWER PUMPS

Simplex offers a wide variety of lightweight power pumps to fit any application.



OPTIONAL TILT SADDLES

Highly recommended for side load applications.



HOSES

Heavy-duty and thermo plastic hydraulic hoses to meet your requirements and safety factor.



LIFTING EYES

Certified lifting eyes.

TYPICAL APPLICATIONS

Used for foundation supporting, bridge construction and ship building.



| Model | Capacity (tons) | Stroke (in) | Oil Capacity Required (cu.in.) | Effective Area (sq.in.) | Wt. (lbs) |
|----------|-----------------|-------------|--------------------------------|-------------------------|-----------|
| RCL302 | 34 | 1.97 | 13.48 | 6.85 | 19 |
| RCL304 | | 3.94 | 26.96 | 6.85 | 26 |
| RCL306 | | 5.91 | 40.44 | 6.85 | 34 |
| RCL308 | | 7.87 | 53.92 | 6.85 | 40 |
| RCL3012 | | 11.81 | 80.88 | 6.85 | 55 |
| RCL502 | 55 | 1.97 | 21.63 | 10.99 | 32 |
| RCL506 | | 5.91 | 64.88 | 10.99 | 55 |
| RCL5010 | | 9.84 | 108.14 | 10.99 | 77 |
| RCL1002 | 104 | 1.97 | 40.50 | 20.57 | 70 |
| RCL1006 | | 5.91 | 121.50 | 20.57 | 111 |
| RCL10010 | | 9.84 | 202.49 | 20.57 | 152 |
| RCL1502 | 158 | 1.97 | 61.35 | 31.16 | 115 |
| RCL1506 | | 5.91 | 184.04 | 31.16 | 183 |
| RCL15012 | | 11.81 | 368.08 | 31.16 | 276 |
| RCL2506 | 247 | 5.91 | 287.56 | 48.69 | 298 |
| RCL25012 | | 11.81 | 575.13 | 48.69 | 444 |



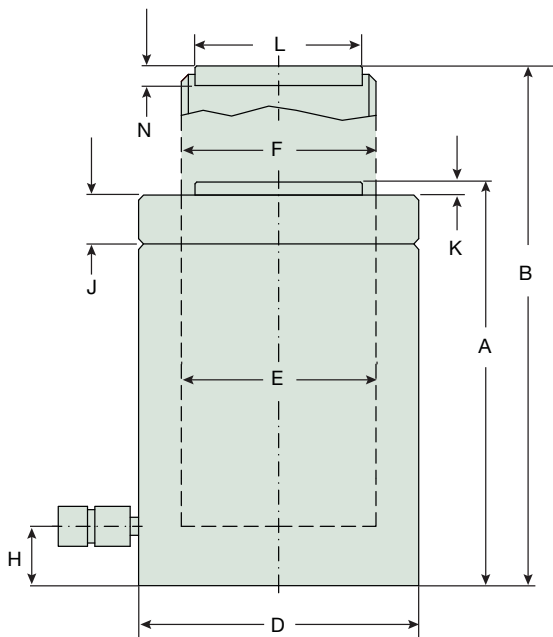
RLL LOW-HEIGHT CYLINDERS

For confined areas use RLL-Series, pancake cylinders.

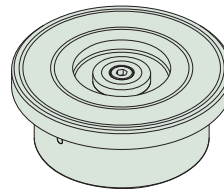


THINK SAFETY

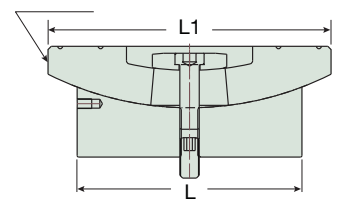
Manufacturer's rating of load and stroke are maximum safe limits. Good practice encourages using only 80% of these ratings!



Optional tilt saddle.



TILTING ±5°



| A | B | D | E | F | H | J | K | L | N | Cylinder Model |
|-----------------------|----------------------|-----------------------|-----------------------------|----------------------------------|------------------------|----------------------|-------------------------------------|----------------------|--------------------|-----------------|
| Collapsed Height (in) | Extended Height (in) | Outside Diameter (in) | Cylinder Bore Diameter (in) | Plunger Diameter (Threaded) (mm) | Base to Adv. Port (in) | Lock Nut Height (in) | Saddle Protrusion from Plunger (in) | Saddle Diameter (in) | Saddle Height (in) | |
| 5.55 | 7.52 | 3.94 | 2.95 | Tr 75x4 | 0.79 | 0.79 | 0.12 | 1.97 | 0.79 | RCL302 |
| 7.52 | 11.46 | 3.94 | 2.95 | Tr 75x4 | 0.79 | 0.79 | 0.12 | 1.97 | 0.79 | RCL304 |
| 9.69 | 15.59 | 3.94 | 2.95 | Tr 75x4 | 0.79 | 0.79 | 0.12 | 1.97 | 0.79 | RCL306 |
| 11.65 | 19.53 | 3.94 | 2.95 | Tr 75x4 | 0.79 | 0.79 | 0.12 | 1.97 | 0.79 | RCL308 |
| 15.94 | 27.76 | 3.94 | 2.95 | Tr 75x4 | 0.79 | 0.79 | 0.12 | 1.97 | 0.79 | RCL3012 |
| 6.02 | 7.99 | 4.92 | 3.74 | Tr 95x4 | 0.98 | 0.83 | 0.12 | 1.97 | 0.79 | RCL502 |
| 10.28 | 16.18 | 4.92 | 3.74 | Tr 95x4 | 0.98 | 0.83 | 0.12 | 1.97 | 0.79 | RCL506 |
| 14.41 | 24.25 | 4.92 | 3.74 | Tr 95x4 | 0.98 | 0.83 | 0.12 | 1.97 | 0.79 | RCL5010 |
| 7.09 | 9.06 | 6.69 | 5.12 | Tr 130x6 | 1.18 | 1.22 | 0.12 | 2.80 | 0.79 | RCL1002 |
| 11.22 | 17.13 | 6.69 | 5.12 | Tr 130x6 | 1.18 | 1.22 | 0.12 | 2.80 | 0.79 | RCL1006 |
| 15.39 | 25.24 | 6.69 | 5.12 | Tr 130x6 | 1.18 | 1.22 | 0.12 | 2.80 | 0.79 | RCL10010 |
| 7.68 | 9.65 | 8.27 | 6.30 | Tr 160x6 | 1.57 | 1.50 | 0.12 | 3.70 | 0.79 | RCL1502 |
| 12.17 | 18.07 | 8.27 | 6.30 | Tr 160x6 | 1.57 | 1.50 | 0.12 | 3.70 | 0.79 | RCL1506 |
| 18.31 | 30.12 | 8.27 | 6.30 | Tr 160x6 | 1.57 | 1.50 | 0.12 | 3.70 | 0.79 | RCL15012 |
| 12.91 | 18.82 | 10.24 | 7.87 | Tr 200x6 | 1.97 | 1.57 | 0.12 | 4.45 | 0.98 | RCL2506 |
| 19.21 | 31.02 | 10.24 | 7.87 | Tr 200x6 | 1.97 | 1.57 | 0.12 | 4.45 | 0.98 | RCL25012 |

| With Tilt Saddle | | |
|------------------|---------|-------------------|
| A (in) | L1 (in) | Tilt Saddle Model |
| 6.10 | 2.80 | CATS50 |
| 8.07 | 2.80 | CATS50 |
| 10.24 | 2.80 | CATS50 |
| 12.20 | 2.80 | CATS50 |
| 16.50 | 2.80 | CATS50 |
| 6.57 | 2.80 | CATS50 |
| 10.83 | 2.80 | CATS50 |
| 14.96 | 2.80 | CATS50 |
| 7.48 | 2.80 | CATS100 |
| 11.61 | 2.80 | CATS100 |
| 15.79 | 2.80 | CATS100 |
| 8.43 | 3.82 | CATS150 |
| 12.91 | 3.82 | CATS150 |
| 19.06 | 3.82 | CATS150 |
| 13.62 | 4.96 | CATS200 |
| 19.92 | 4.96 | CATS200 |

HIGH-TONNAGE CYLINDERS

RCR-Series, Double-Acting, Hydraulic Return



Capacity Range▶ 55 - 247 tons
 Stroke Range▶ 1.97 - 11.81 in.
 Maximum Pressure▶ 10,150 psi

- ▶ Double-Acting, hydraulic return.
- ▶ Safety valve on the retract side to prevent accidental over-pressure.
- ▶ Replaceable wear bands improve seal life and side load capacity.
- ▶ Custom strokes and capacities up to 1000 ton.
- ▶ Optional tilt saddles.



POWER PUMPS

Simplex offers a wide variety of lightweight power pumps to fit any application.



OPTIONAL TILT SADDLES

Highly recommended for side load applications.



HOSES

Heavy-duty and thermo plastic hydraulic hoses to meet your requirements and safety factor.



LIFTING EYES

Certified lifting eyes.

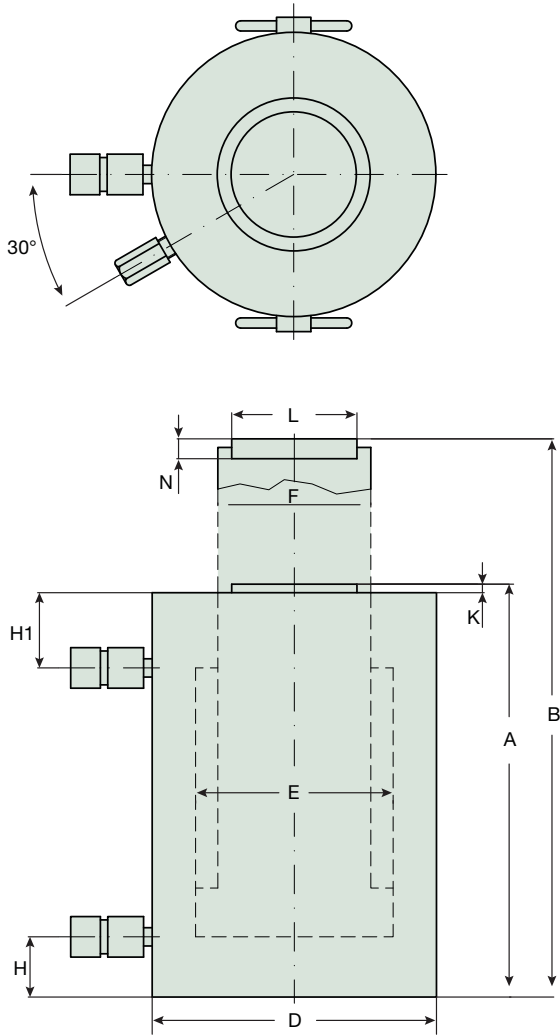


| Model | Capacity (tons) | Stroke (in) | Oil Capacity Required (cu.in.) | Effective Area (sq.in.) | Wt. (lbs) |
|-----------------|-----------------|-------------|--------------------------------|-------------------------|-----------|
| <i>RCR502</i> | 55 | 1.97 | 21.63 | 10.99 | 42 |
| <i>RCR506</i> | | 5.91 | 64.88 | 10.99 | 58 |
| <i>RCR5012</i> | | 11.81 | 129.76 | 10.99 | 84 |
| <i>RCR1002</i> | 104 | 1.97 | 40.50 | 20.57 | 72 |
| <i>RCR1006</i> | | 5.91 | 121.50 | 20.57 | 102 |
| <i>RCR10012</i> | | 11.81 | 242.99 | 20.57 | 149 |
| <i>RCR1502</i> | 158 | 1.97 | 61.35 | 31.16 | 118 |
| <i>RCR1506</i> | | 5.91 | 184.04 | 31.16 | 162 |
| <i>RCR15012</i> | | 11.81 | 368.09 | 31.16 | 230 |
| <i>RCR2502</i> | 247 | 1.97 | 95.86 | 48.69 | 198 |
| <i>RCR2506</i> | | 5.91 | 287.57 | 48.69 | 265 |
| <i>RCR25012</i> | | 11.81 | 575.14 | 48.69 | 372 |

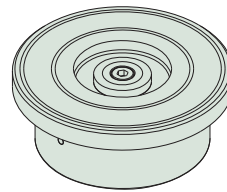


THINK SAFETY

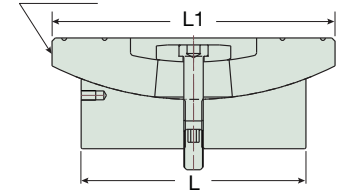
Manufacturer's rating of load and stroke are maximum safe limits. Good practice encourages using only 80% of these ratings!



Optional tilt saddle.



TILTING ±5°



| A | B | D | E | F | H | H1 | K | L | N | Cylinder Model |
|-----------------------|----------------------|-----------------------|-----------------------------|-----------------------|------------------------|--------------------------|-------------------------------------|----------------------|--------------------|-----------------|
| Collapsed Height (in) | Extended Height (in) | Outside Diameter (in) | Cylinder Bore Diameter (in) | Plunger Diameter (in) | Base to Adv. Port (in) | Top to Retract Port (in) | Saddle Protrusion From Plunger (in) | Saddle Diameter (in) | Saddle Height (in) | |
| 8.11 | 10.08 | 4.92 | 3.74 | 2.95 | 0.98 | 2.95 | 0.24 | 1.97 | 0.79 | RCR502 |
| 12.05 | 17.95 | 4.92 | 3.74 | 2.95 | 0.98 | 2.95 | 0.24 | 1.97 | 0.79 | RCR506 |
| 18.15 | 29.96 | 4.92 | 3.74 | 2.95 | 0.98 | 3.15 | 0.24 | 1.97 | 0.79 | RCR5012 |
| 7.72 | 9.69 | 6.69 | 5.12 | 3.94 | 1.18 | 2.36 | 0.24 | 2.80 | 0.79 | RCR1002 |
| 11.65 | 17.56 | 6.69 | 5.12 | 3.94 | 1.18 | 2.36 | 0.24 | 2.80 | 0.79 | RCR1006 |
| 17.77 | 29.58 | 6.69 | 5.12 | 3.94 | 1.18 | 2.56 | 0.24 | 2.80 | 0.79 | RCR10012 |
| 8.39 | 10.35 | 8.27 | 6.30 | 4.33 | 1.57 | 2.56 | 0.24 | 3.70 | 0.79 | RCR1502 |
| 12.53 | 18.44 | 8.27 | 6.30 | 4.33 | 1.57 | 2.76 | 0.24 | 3.70 | 0.79 | RCR1506 |
| 18.83 | 30.64 | 8.27 | 6.30 | 4.33 | 1.57 | 3.15 | 0.24 | 3.70 | 0.79 | RCR15012 |
| 9.17 | 11.14 | 10.24 | 7.87 | 5.51 | 1.97 | 2.95 | 0.24 | 4.45 | 0.98 | RCR2502 |
| 13.11 | 19.02 | 10.24 | 7.87 | 5.51 | 1.97 | 2.95 | 0.24 | 4.45 | 0.98 | RCR2506 |
| 19.62 | 31.43 | 10.24 | 7.87 | 5.51 | 1.97 | 3.35 | 0.24 | 4.45 | 0.98 | RCR25012 |

| With Tilt Saddle | | |
|------------------|---------|-------------------|
| A (in) | L1 (in) | Tilt Saddle Model |
| 10.63 | 2.80 | CATS50 |
| 18.50 | 2.80 | CATS50 |
| 30.51 | 2.80 | CATS50 |
| 10.08 | 2.80 | CATS100 |
| 17.95 | 2.80 | CATS100 |
| 29.97 | 2.80 | CATS100 |
| 11.10 | 3.82 | CATS150 |
| 19.19 | 3.82 | CATS150 |
| 31.39 | 3.82 | CATS150 |
| 9.88 | 4.96 | CATS200 |
| 13.82 | 4.96 | CATS200 |
| 20.33 | 4.96 | CATS200 |

SIMPLEX Product Lines

cylinders



hand pumps



power pumps



accessories



bolting



lifting jacks



hydraulic tools



presses



mechanical jacks



Visit us on the web.
www.tksimplex.com

Your Simplex Distributor:

N86 W12500 Westbrook Crossing
Menomonee Falls, WI 53051
Phone (USA): 1.800.323.9114
Phone (INSIDE / OUTSIDE USA): 1.262.293.1575
Fax: 1.262.597.1127