

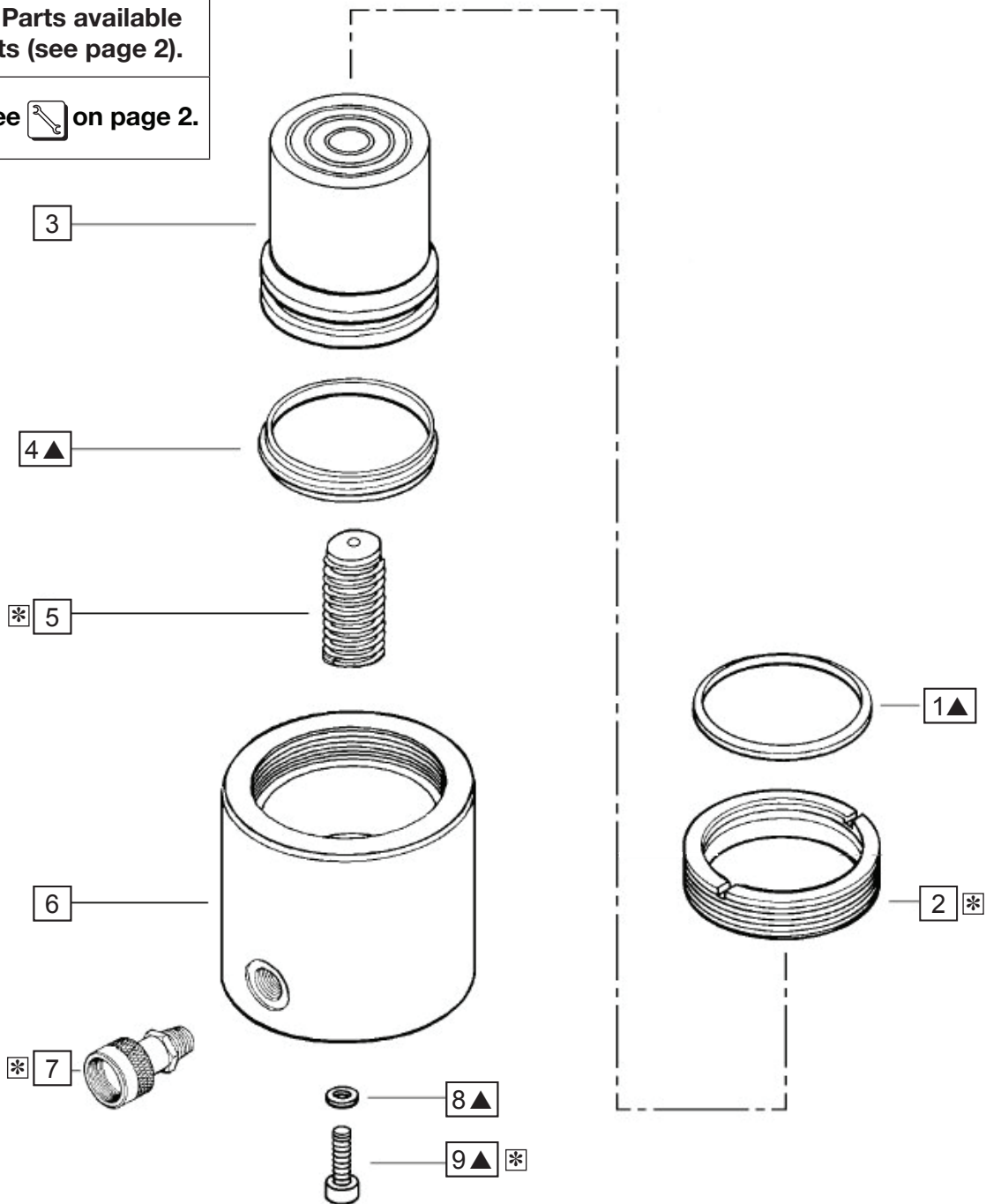
Index:

English.....	1-2
Português.....	3-4
Polski.....	5-6

Repair Parts Sheet	Revision	Revision Date	Product Code Beginning
L1217	Q	09/20	A: RCS 101/201 B: RCS 302 D: RCS 502/1002

▲ = Parts available in kits (see page 2).

* See  on page 2.



Repair Parts List

Item nr.	Description	Qty.	RCS101	RCS201	RCS302	RCS502	RCS1002	
1	Wiper Ring	1	▲	▲	▲	▲	▲	
2	Stop Ring	1	CR28044	CR39044	CR83044	DA2556044	CR106044	
3	Plunger	1	CR80040	CR79040	CR78040	DA2557040	DA9419040	
4	G-T Ring	1	▲	▲	▲	▲	▲	
5	Spring assy.	1	CU678900	CU678900	DC5215900	DC5215900	DC5215900	
6	Cylinder Base	1	Not available as a service item. Order a new cylinder.					
7	Coupler	1	CR400	CR400	CR400	CR400	CR400	
8	Gasket	1	▲	▲	▲	▲	▲	
9	Screw	1	▲	▲	▲	▲	▲	
10	Caution decal (not shown)	1	▲	▲	▲	▲	▲	
11	Enerpac decal (not shown)	1	▲	▲	▲	▲	▲	
12	Dust Cap (not shown)	1	▲	▲	▲	▲	▲	
13	Handle	1	-	-	-	-	CM584070	
▲	Repair Kit		RCS101K	RCS201K	RCS302K	RCS502K	RCS1002K	

▲ = Indicates item included as part of repair kit (not sold separately).
Parts included in repair kits will vary, depending on kit ordered.



Service Notes		
Item	Model	Torque / Remark
2	All	Apply Loctite 222 to threads
5	RCS101 / 201	40 – 45 in-lbs [4.5 – 5.1 Nm]
5	RCS302 / 502 / 1002	90 – 95 in-lbs [10.2 – 10.7 Nm]
7	All	25 – 60 ft-lbs [34 – 81 Nm]
7	All	Use Loctite 545 or Teflon tape
9	RCS101 / 201	40 – 45 in-lbs [4.5 – 5.1 Nm]
9	RCS302 / 502 / 1002	90 – 95 in-lbs [10.2 – 10.7 Nm]
13	RCS1002	Secure with Loctite 242

ENERPAC

Visit www.enerpac.com for the location of the
Enerpac Authorized Service Center nearest you.



www.enerpac.com