

# SIMPLEX®

WWW.TKSIMPLEX.COM

TECHNICAL REPAIR PART SHEET

## S3000A

### .75 Ton Hydraulic Spreader

PART SHEET NUMBER

REVISION NUMBER/LETTER

DATE CODE RANGE

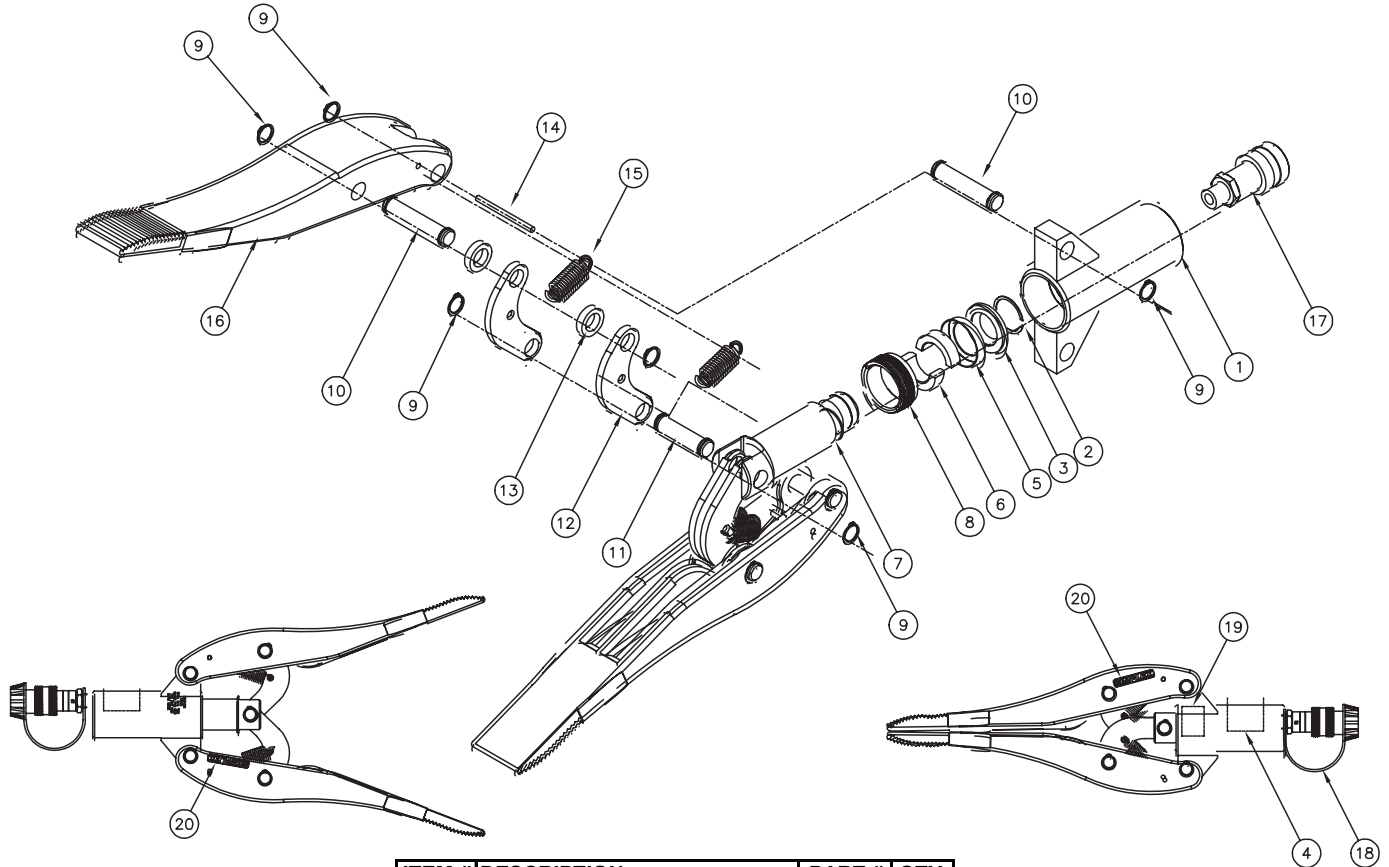
DOCUMENT DATE

TD131

A

S3000A D08 AND ABOVE

04/13



ITEM #	DESCRIPTION	PART #	QTY.
1	BASE SUB ASM.	N/A	1
2	RET RING	6110083	1
3	U CUP	*	1
4	MAX LOAD DECAL	6110085	1
5	CUP BUSHING	6110086	1
6	ROD BEARING	6110087	1
7	PLUNGER	6110088	1
8	RING	6110089	1
9	RETAINING RING	*	1
10	SPREADER ARM PIN	6110091	2
11	PIN	6110092	1
12	LINK	6110093	4
13	SPACER	6110094	4
14	ANCHOR PIN	6110095	2
15	PULL SPRING	6110096	4
16	SPREADER ARM PUR COMP.	6110097	2
17	FEMALE COUPLER	40858	1
18	DUST CAP	CR215	1
19	CAUTION DECAL	87753	1
20	SIMPLEX DECAL	88187	2

NOTE: (\* = KIT COMPONENTS) PART# 54496

NOTE: PART SHEET IS DESIGNATED FOR DATE CODES D08 AND ABOVE.



To maintain your warranty:  
Have your products inspected and repaired by an SIMPLEX Authorized Service Center.  
Visit [www.tksimplex.com](http://www.tksimplex.com) to locate the nearest one.

