

# Specification

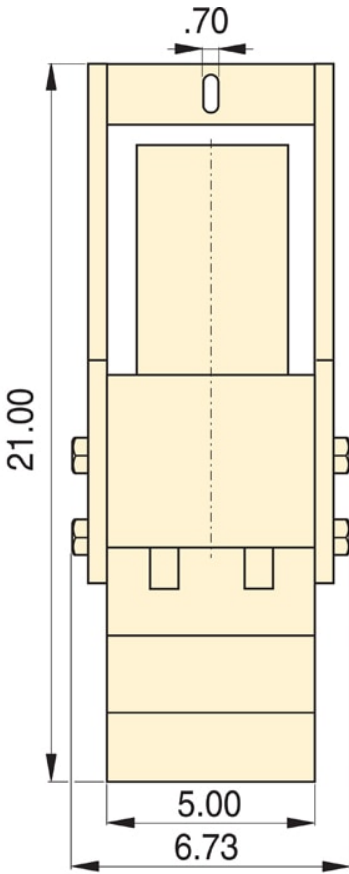
Units:

**Imperial**

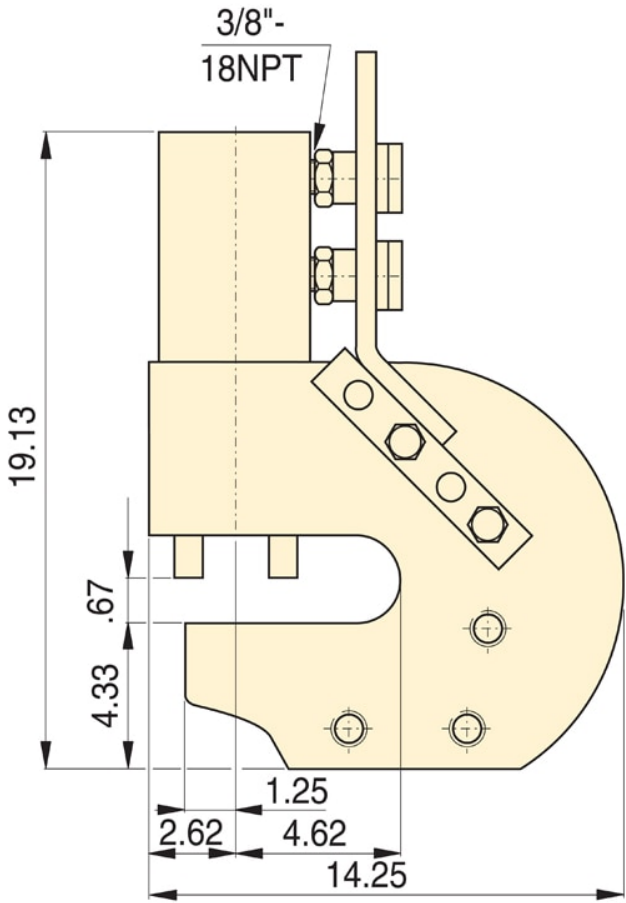
Metric

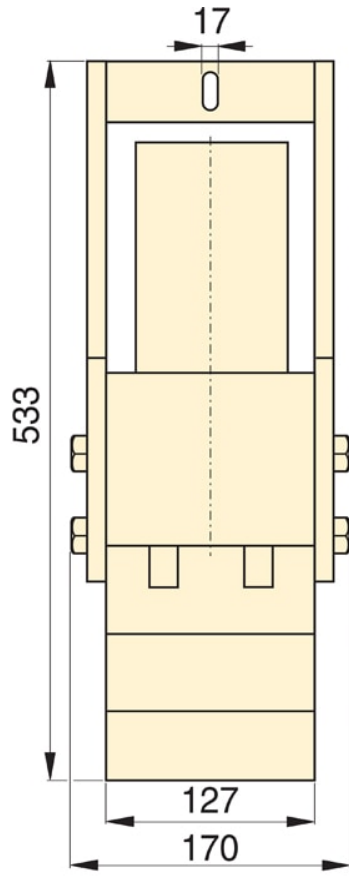
Maximum Operating Pressure (psi)	10,000
Capacity (imperial tons)	50
Cylinder Return Type	Double-Acting, Hydraulic Return
Hole Shape	Circle
Pump Power Source	Electric Pump
Oil Capacity Advance (in <sup>3</sup> )	17
Oil Capacity Retract (in <sup>3</sup> )	14
Weight (lbs)	384

# Dimensions



50-Ton Punch Press





**50-Ton Punch Press**

