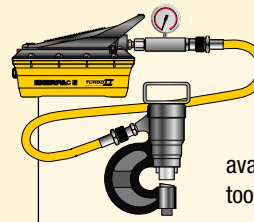


Enerpac offers an extensive range of dedicated tools for a variety of specific and flexible applications.

Whatever your requirement... cutting, punching, spreading or bending... you can be sure that Enerpac has the correct tool to do your job safely and efficiently.

Featuring maintenance sets, machine lifts and load skates, as well as hole punches, pipe benders and cable cutters, Enerpac has the tools to ensure that even your most demanding applications can be undertaken with the highest degree of safety and accuracy.



Tool-Pump Sets

Most hydraulic tools in this section are available in sets, for a perfect tool-pump match.



Hydraulic System Set-up

Check out our 'Yellow Pages' section for help on system set-ups and valving configurations.

Page: 270













Bolting Tools

More Enerpac Tools you will find in our Bolting Tools section in this catalogue.

Page: 182



Hydraulic Tools Section Overview

| Capacity ton (kN) | Tool type and functions | Series | | Page |
|-----------------------------------|---|----------------------------|---|--------------|
| 2,5 - 12,5 (22 - 116) | Maintenance Sets | MS |  | 164 ▶ |
| 35 - 50 (311 - 498) | Punch Punch-Pump Sets | MSP |  | 168 ▶ |
| | | SP | | 170 ▶ |
| 16 (157) | Lifting Wedge | LW |  | 172 ▶ |
| 8,5 - 20 (75 - 178) | Machine Lifts | SOH |  | 173 ▶ |
| 1 - 80 (8,9 - 712) | Heavy-Duty Load Skates | ER ES ELP |  | 174 ▶ |
| 19 - 453 litres | Industrial Storage Cases | CM |  | 176 ▶ |
| 0,75 - 1,0 (6 - 8,9) | Hydraulic Wedgie Spread Cylinders | A WR |  | 177 ▶ |
| 3 - 20 (26 - 178) | Hydraulic Cutterheads Cutterhead-Pump Sets | WHC WHR STC |  | 178 ▶ |
| 3 - 20 (26 - 178) | Self-Contained Hydraulic Cutters | WMC |  | 179 ▶ |
| Nominal Bore ½ - 4 inch | Pipe Bender Sets | STB |  | 180 ▶ |

▼ Shown: MS2-10



- All sets include Enerpac pump, hose, cylinder and gauge
- Lock-on or threaded connectors
- Complete maintenance set for almost every maintenance application.

The Universal Hydraulic Tool Box



Maintenance Sets

Enerpac Maintenance sets are a complete assortment of hydraulic powered tools. Using these sets allows you to quickly configure a unique tool to meet your most difficult jobs.

Built around the Enerpac lightweight hand pump, hose and cylinder, these sets enable you to push, pull, lift, press, straighten, spread and clamp with forces up to 12,5 ton.



More Information







For detailed information on all included attachments, see the next pages.

Page: 166



Clamping a workpiece is just one of the many applications for the Enerpac maintenance sets. ▶

▼ QUICK SELECTION CHART

| Capacity using attachments* ton (kN) | Set Model Number |  |  |  |  |  | Number of Attachment Components |  (kg) |
|---|------------------|---|---|---|--|---|---------------------------------|---|
| 2,5 (22) | MS2-4 | P-142 | HC-7206 | RC-55 | GP-10S | GA-4 | 33 | 26 |
| 2,5 (22) | MSFP-5 | P-142 | HC-7206 | RC-55 | GP-10S | GA-4 | 24 | 20 |
| 5,0 (50) | MSFP-10 | P-392 | HC-7206 | RC-106 | G2535L | GA-3 | 23 | 48 |
| 5,0 (50) | MS2-10 | P-392 | HC-7206 | RC-106 | GP-10S | GA-2 | 35 | 63 |
| 12,5 (116) | MS2-20 | P-392 | HC-7206 | RC-256 | GP-10S | GA-2 | 13 | 95 |
| 5,0-12,5 (50-116) | MS2-1020 | P-392 | HC-7206 | RC-102, -106, -256 | GP-10S | GA-2 | 53 | 158 |

* If no attachments are being used, capacity is double these values. Maximum operating pressure is then 700 bar.

Universal Maintenance Sets



CAUTION!

When cylinders are used with maintenance set attachments or components, the maximum system pressure must be limited to half the rated pressure (350 bar).



WARNING!

Only use attachments provided with set. Non-Enerpac attachments and longer extension tubes will reduce column strength, potentially creating unsafe conditions.

MS Series



Capacity (using attachments):

2,5 - 12,5 ton

Maximum Operating Pressure:

350 bar

▼ APPLICATION EXAMPLES




MS-Series, Maintenance Sets



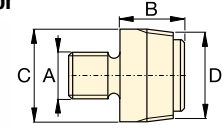
CAUTION! When cylinders are used with maintenance set attachments or components, the maximum system pressure must be limited to half the rated pressure (350 bar).

Note: All dimensions in millimetres.

| Set Model Number | MS2-4 | MSFP-5 | MSFP-10 | MS2-10 | MS2-20 | MS2-1020 |
|--|--------------|--------------|--------------|--------------|------------|--------------------------|
| Base, Collar and Plunger Attachments | 2,5 ton | 2,5 ton | 5,0 ton | 5,0 ton | 12,5 ton | 5,0 - 12,5 ton |
| Cylinder Model(s) | RC-55 | RC-55 | RC-106 | RC-106 | RC-256 | RC-102, 106, 256 |
| 1 | A-23 | A-23 | A-13 | A-13 | A-28 | A-13, A-28 |
| 2 | A-25 | A-25 | A-21 | A-21 | A-27 | A-21, A-27 |
| 3 | A-1034 | A-1034 | A-20 | A-20 | A-595 | A-20, A-595 |
| 4 | MZ-4010 | MZ-4010 | A-14 | A-14 | A-243 | A-14, A-243 |
| 5 | A-545 | A-545 | A-10 | A-10 | - | A-10 (2x) |
| 6 | - | - | - | A-8 | - | A-8 |
| 7 | A-530 | A-530 | A-6 | A-6 | - | A-6 |
| 8 | MZ-4011 | - | - | A-192 | - | A-192 |
| 9 | - | - | - | A-305 | - | A-305 |
| 10 | A-531 | A-531 | A-18 | A-18 | - | A-18 |
| 11 | - | - | - | A-185 | - | A-185 |
| 12 | A-532 | A-532 | A-15 | A-15 | - | A-15 |
| 13 | - | - | - | - | A-607 | A-607 |
| 14 | A-629 | A-629 | A-129 | A-129 | - | A-129 |
| 15 | A-539 | A-539 | A-128 | A-128 | - | A-128 |
| Chains and Attachments for Pulling Applications | 2,5 ton | 2,5 ton | 5,0 ton | 5,0 ton | 12,5 ton | 5,0 - 12,5 ton |
| 16 | A-558 | - | - | A-132 | A-238 | A-132, A-238 |
| 17 | - | - | - | A-5 (2x) | - | A-5 (2x) |
| 18 | A-557 (2x) | - | - | A-141 (2x) | A-218 (2x) | A-141 (2x), A-18 (2x) |
| Extension Tubes, Connectors and Adaptors | 2,5 ton | 2,5 ton | 5,0 ton | 5,0 ton | 12,5 ton | 5,0 - 12,5 ton |
| 19 | A-544 | - | - | A-19 (2x) | A-242 (2x) | A-19 (2x) A-242 (2x) |
| 20 | WR-5 | WR-5 | WR-5 | A-92 | - | A-92 |
| 21 | MZ-4013 (4x) | MZ-4013 (4x) | A-16 (4x) | A-16 (4x) | - | A-16 (4x) |
| 22 | MZ-4007 (3x) | MZ-4007 (3x) | MZ-1050 (3x) | MZ-1050 (2x) | - | MZ-1050 (3x) |
| 23 | MZ-4008 (2x) | - | - | MZ-1051 | - | MZ-1051 (2x) |
| 24 | MZ-4009 | MZ-4009 | MZ-1052 | MZ-1052 | - | MZ-1052 |
| 25 | - | - | - | A-285 | - | A-285 |
| 26 | A-650 | - | - | - | - | - |
| 27 Length (mm) | 76 | MZ-4002 | MZ-4002 | - | - | - |
|  | 127 | MZ-4003 | MZ-4003 | MZ-1002 | MZ-1002 | - |
| | 254 | MZ-4004 | MZ-4004 | MZ-1003 | MZ-1003 | A-239 |
| | 254 | - | - | - | - | A-239 |
| | 457 | MZ-4005 (2x) | MZ-4005 | MZ-1004 | MZ-1004 | A-240 |
| | 457 | - | - | - | - | A-240 |
| | 584 | MZ-4006 | MZ-4006 | - | - | - |
| 762 | - | - | MZ-1005 | MZ-1005 | A-241 | |
| 762 | - | - | - | - | - | |
| 28 Storage Case | CM-6 | CM-6 | CW-350 | CW-350 | CW-350 | CW-750 |
| Set Weight (kg) | 26 | 20 | 48 | 63 | 95 | 158 |

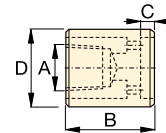
Base, Collar and Plunger Attachments

1 Threaded Adaptor



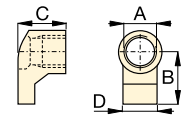
| ton | Model Nr. | A | B | C | D |
|------|-----------|----------------|----|----|---------------------|
| 2,5 | A-23 | 3/4" - 16 UN | 28 | 26 | 3/4" - 14 NPT |
| 5,0 | A-13 | 1" - 8 UN | 31 | 42 | 1 1/4" - 11 1/2 NPT |
| 12,5 | A-28 | 1 1/2" - 16 UN | 47 | 69 | 2" - 11 1/2 NPT |

2 Base Attachment



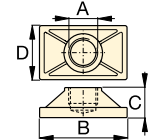
| ton | Model Nr. | A | B | C | D |
|------|-----------|---------------------|----|----|----|
| 2,5 | A-25 | 3/4" - 14 NPT | 50 | 12 | 44 |
| 5,0 | A-21 | 1 1/4" - 11 1/2 NPT | 57 | 12 | 65 |
| 12,5 | A-27 | 2" - 11 1/2 NPT | 63 | 12 | 98 |

3 Collar Toe



| ton | Model Nr. | A | B | C | D |
|------|-----------|-----------------|-----|----|----|
| 2,5 | A-1034 | 1 1/2" - 16 UN | 54 | 50 | 31 |
| 5,0 | A-20 | 2 1/4" - 14 UN | 80 | 57 | 57 |
| 12,5 | A-595 | 3 5/16" - 12 UN | 103 | 51 | 80 |

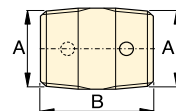
4 Flat Base



| ton | Model Nr. | A | B | C | D |
|------|-----------|---------------------|-----|----|-----|
| 2,5 | MZ-4010 | 3/4" - 14 NPT | 114 | 31 | 63 |
| 5,0 | A-14 | 1 1/4" - 11 1/2 NPT | 165 | 35 | 88 |
| 12,5 | A-243* | 2" - 11 1/2 NPT | 165 | 58 | 165 |

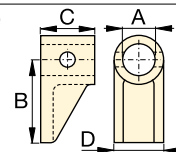
* A-243 is a round base model.

5 Threaded Connector



| ton | Model Nr. | A | B |
|-----|-----------|---------------------|----|
| 2,5 | A-545 | 3/4" - 14 NPT | 35 |
| 5,0 | A-10 | 1 1/4" - 11 1/2 NPT | 41 |

6 Lock-on Clamp Toe



| ton | Model Nr. | A | B | C | D |
|-----|-----------|----|-----|----|----|
| 5,0 | A-8 | 43 | 105 | 50 | 57 |

Universal Maintenance Sets, MS-Series

7 Threaded Plunger Toe

| ton | Model Nr. | A | B | C | D |
|-----|--------------|---------------|----|----|----|
| 2,5 | A-530 | ¾" - 14 NPT | 57 | 25 | 33 |
| 5,0 | A-6 | 1¼" - 11½ NPT | 82 | 31 | 57 |

14 Wedge Head

| ton | Model Nr. | A | B | C | D |
|-----|--------------|---------------|-----|----|----|
| 2,5 | A-629 | ¾" - 14 NPT | 69 | 33 | 28 |
| 5,0 | A-129 | 1¼" - 11½ NPT | 101 | 50 | 44 |

20 Spreader

| ton | Model Nr. | A | B | C | D |
|-----|-------------|-------------|-----|------|-----|
| 1,0 | WR-5 | — | 223 | 12,8 | 94 |
| 1,0 | A-92 | 2¼" - 14 UN | 244 | 35 | 158 |

8 Collar Clamp Head

| ton | Model Nr. | A | B | C | D |
|-----|----------------|-------------|----|----|-------------|
| 2,5 | MZ-4011 | ¾" - 14 NPT | 49 | 76 | 1½" - 16 UN |
| 5,0 | A-192 | 42 | 63 | 50 | 2¼" - 14 UN |

15 Rubber Flex Head

| ton | Model Nr. | A | B | C |
|-----|--------------|---------------|----|----|
| 2,5 | A-539 | ¾" - 14 NPT | 44 | 69 |
| 5,0 | A-128 | 1¼" - 11½ NPT | 86 | 86 |

21 Lock Pin

| ton | Model Nr. | A | B |
|-----|----------------|------|----|
| 2,5 | MZ-4013 | 7,9 | 41 |
| 5,0 | A-16 | 11,2 | 82 |

9 Spreader Toe

| ton | Model Nr. | A | B | C | D |
|-----|--------------|---------------|-----|----|----|
| 5,0 | A-305 | 1¼" - 11½ NPT | 114 | 25 | 50 |

Chains and Attachments for Pulling

16 Single Chain Plate

| ton | Model Nr. | A | B | C | D |
|------|--------------|-------------|-----|-----|-----|
| 2,5 | A-558 | 1½" - 16 UN | 196 | 39 | 44 |
| 5,0 | A-132 | 2¼" - 14 UN | 307 | 63 | 79 |
| 12,5 | A-238 | 3⅝" - 12 UN | 450 | 102 | 125 |

22 Lock-on Connector

| ton | Model Nr. | A | B |
|-----|----------------|----|-----|
| 2,5 | MZ-4007 | 19 | 79 |
| 5,0 | MZ-1050 | 33 | 127 |

10 Serrated Saddle

| ton | Model Nr. | A | B | C |
|-----|--------------|---------------|----|----|
| 2,5 | A-531 | ¾" - 14 NPT | 27 | 31 |
| 5,0 | A-18 | 1¼" - 11½ NPT | 38 | 50 |

17 Double Chain Plate

| ton | Model Nr. | A | B | C | D |
|-----|------------|---------------|-----|----|-----|
| 5,0 | A-5 | 1¼" - 11½ NPT | 130 | 50 | 126 |

23 Male Lock-on Adaptor

| ton | Model Nr. | A | B | C |
|-----|----------------|---------------|----|----|
| 2,5 | MZ-4008 | ¾" - 14 NPT | 60 | 19 |
| 5,0 | MZ-1051 | 1¼" - 11½ NPT | 90 | 33 |

11 Smooth Saddle

| ton | Model Nr. | A | B | C |
|-----|--------------|---------------|----|----|
| 5,0 | A-185 | 1¼" - 11½ NPT | 38 | 50 |

18 Chain with Hook

| ton | Model Nr. | Chain Length |
|------|--------------|--------------|
| 2,5 | A-557 | 1,5 metres |
| 5,0 | A-141 | 1,8 metres |
| 12,5 | A-218 | 2,4 metres |

24 Female Lock-on Adaptor

| ton | Model Nr. | A | B | C |
|-----|----------------|---------------|----|----|
| 2,5 | MZ-4009 | ¾" - 14 NPT | 65 | 19 |
| 5,0 | MZ-1052 | 1¼" - 11½ NPT | 96 | 33 |

12 90° V-Base

| ton | Model Nr. | A | B | C | D |
|-----|--------------|---------------|----|----|----|
| 2,5 | A-532 | ¾" - 14 NPT | 38 | 47 | 25 |
| 5,0 | A-15 | 1¼" - 11½ NPT | 54 | 57 | 54 |

Tubes, Connectors and Adaptors

19 Pipe Coupling

| ton | Model Nr. | A | B | C |
|------|--------------|---------------|----|----|
| 2,5 | A-544 | ¾" - 14 NPT | 42 | 33 |
| 5,0 | A-19 | 1¼" - 11½ NPT | 49 | 54 |
| 12,5 | A-242 | 2" - 11½ NPT | 88 | 82 |

25 Adjustable Extension

| ton | Model Nr. | A | B | C | D |
|-----|--------------|---------------|-----|-----|----|
| 5,0 | A-285 | 1¼" - 11½ NPT | 335 | 441 | 33 |

13 Plunger Base

| ton | Model Nr. | A | B | C |
|------|--------------|--------------|-----|----|
| 12,5 | A-607 | 2" - 11½ NPT | 166 | 38 |

26 Slip-on Extension

| ton | Model Nr. | A | B | C |
|-----|--------------|-------------|-----|-----|
| 2,5 | A-650 | ¾" - 14 NPT | 200 | 365 |

SP-Series, Lightweight Hydraulic Punch

▼ Shown: SP-35S



- 12,7 mm thick capacity through mild steel
- Round, oblong and square punches and dies are available to solve your punching applications
- Long life Enerpac single-acting, spring return design
- Durable steel case keeps tools and dies together and provides for easy carrying and storage
- CR-400 coupler included.

Much Faster than Drilling



Tool Kit SPK-10

Included with all 35 Ton punches, this tool kit is used to remove and install the punch into the head. Can be ordered as a replacement under model number **SPK-10**.



Ordering Information

The 35 ton hydraulic Punch may be ordered by itself or as a set, including a pump. A punch or die may also be ordered separately or as a matched set. Please refer to the Quick Selection Chart information on top of the next page.

▼ SP-Series, Lightweight Hydraulic Punch – Much Faster than Drilling.





▼ STANDARD PUNCHES AND DIES SELECTION CHART

| Hole Shape | Imperial ¹⁾ (inch) | | Metric ¹⁾ (mm) | |
|------------|----------------------------------|-----------|------------------------------|-----------|
| | Hole Size | Bolt Size | Hole Size | Bolt Size |
| ● | 0,31 | 1/4 | 7,9 | – |
| ● | 0,38 | 5/16 | 9,5 | M8 |
| ● | 0,44 | 3/8 | 11,1 | M10 |
| ● | 0,53 | 7/16 | 13,5 | M12 |
| ● | 0,56 | 1/2 | 14,3 | – |
| ● | 0,69 | 5/8 | 17,5 | M16 |
| ● | 0,78 | – | 19,8 | M18 |
| ● | 0,81 | 3/4 | 20,6 | – |
| ■ | 0,31 | 1/4 | 7,9 | – |
| ■ | 0,38 | 5/16 | 9,5 | M8 |
| ■ | 0,44 | 3/8 | 11,1 | M10 |
| ■ | 0,50 | 7/16 | 12,7 | M12 |
| ■ | .31 x .75 | 1/4 | 7,9 x 19 | – |
| ■ | .38 x .75 | 5/16 | 9,5 x 19 | M8 |
| ■ | .44 x .75 | 3/8 | 11,1 x 19 | M10 |
| ■ | .50 x .75 | 7/16 | 12,7 x 19 | M12 |

¹⁾ Material thickness should not exceed hole diameter.

Single-Acting, Spring Return Hydraulic Punch

▼ QUICK SELECTION CHART

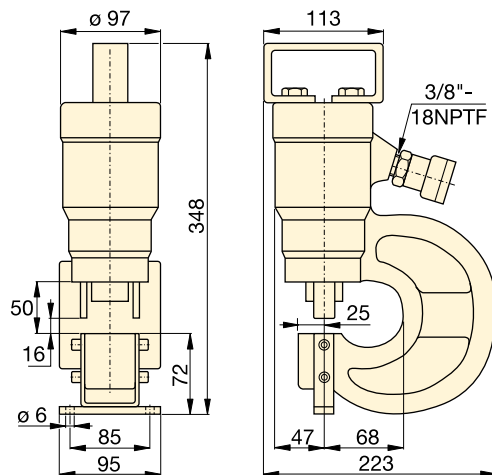
| *  | Punch & Die Set | Included | | | | Model Number |  (kg) |
|---|-----------------|------------|---------|--------|---------------|------------------|--|
| | | Pump | Hose | Gauge | Gauge Adaptor | | |
| SP-35 | Standard** | P-392 | HC-7206 | GP-10S | GA-2 | STP-35H | 25 |
| SP-35 | Standard** | PATG-1102N | HC-7206 | GP-10S | GA-2 | STP-35A | 29 |
| SP-35 | - | - | - | - | - | SP-35 | 16 |
| SP-35 | Standard** | - | - | - | - | SP-35S | 18 |
| SP-35 | Standard** | PUD-1100E | HC-7206 | - | - | SP-35SPE | 29 |
| SP-35 | Metric*** | - | - | - | - | MSP-351 | 21 |
| SP-35 | Metric*** | PUD-1100E | HC-7206 | - | - | MSP-351PE | 32 |

* Punch oil capacity: 76 cm³

Includes the following punch and die sets:

** SPD-438, SPD-688, SPD-563 and SPD-813

*** SPD-375, SPD-531, SPD-438 and SPD-688



MSP SP STP Series



Capacity:

35 ton

Hole Sizes:

7,9 - 20,6 mm

Maximum Operating Pressure:

700 bar




CAUTION!

The chart below is for reference only! Maximum allowable material thickness to be punched varies with set wear.



CAUTION!

Material thickness should not exceed hole diameter.

| Model Nr. Standard Punch & Die Set | Maximum allowable material thickness to be punched (mm) Material thickness should not exceed hole diameter | | | | | | | | | | |
|--|---|------|------|------|------|------|-----|-----|------|------|------|
| | 1) | 2) | 3) | 4) | 5) | 6) | 7) | 8) | 9) | 10) | 11) |
|  SPD-313 | 7,9 | 7,9 | 6,4 | 6,4 | 6,4 | 6,4 | 3,3 | 4,8 | 6,4 | 6,4 | 6,4 |
| SPD-375 | 9,7 | 9,7 | 7,9 | 7,9 | 7,9 | 7,9 | 4,8 | 6,4 | 7,9 | 7,9 | 7,9 |
| SPD-438 | 11,2 | 11,2 | 9,7 | 9,7 | 9,7 | 7,9 | 4,8 | 7,9 | 7,9 | 7,9 | 7,9 |
| SPD-531 | 12,7 | 12,7 | 11,2 | 11,2 | 11,2 | 9,7 | 6,4 | 7,9 | 9,7 | 9,7 | 9,7 |
| SPD-563 | 12,7 | 12,7 | 12,7 | 11,2 | 12,7 | 11,2 | 6,4 | 9,7 | 11,2 | 11,2 | 11,2 |
| SPD-688 | 12,7 | 12,7 | 12,7 | 11,2 | 12,7 | 10,2 | 6,4 | 7,9 | 10,2 | 10,2 | 10,2 |
| SPD-781 | 12,7 | 12,7 | 12,7 | 11,2 | 12,7 | 9,7 | 6,4 | 7,9 | 9,7 | 9,9 | 9,7 |
| SPD-813 | 12,7 | 12,7 | 12,7 | 11,2 | 12,7 | 7,9 | 4,8 | 7,9 | 7,9 | 7,9 | 7,9 |
| SPD-458 | 7,9 | 7,9 | 6,4 | 6,4 | 6,4 | 6,4 | 3,3 | 4,8 | 6,4 | 6,4 | 6,4 |
| SPD-549 | 9,7 | 9,7 | 7,9 | 7,9 | 7,9 | 7,9 | 4,8 | 6,4 | 7,9 | 7,9 | 7,9 |
| SPD-639 | 11,2 | 11,2 | 9,7 | 9,7 | 9,7 | 7,9 | 4,8 | 7,9 | 7,9 | 7,9 | 7,9 |
| SPD-728 | 12,7 | 12,7 | 11,2 | 11,2 | 11,2 | 9,7 | 6,4 | 7,9 | 9,7 | 9,7 | 8,6 |
| SPD-106 | 7,9 | 7,9 | 6,4 | 6,4 | 6,4 | 6,4 | 3,3 | 4,8 | 6,4 | 6,4 | 6,4 |
| SPD-125 | 9,7 | 9,7 | 7,9 | 7,9 | 7,9 | 7,9 | 4,8 | 6,4 | 7,9 | 7,9 | 7,9 |
| SPD-188 | 11,2 | 11,2 | 9,7 | 9,7 | 9,7 | 7,9 | 4,8 | 7,9 | 7,9 | 7,9 | 7,9 |
| SPD-250 | 12,7 | 12,7 | 11,2 | 11,2 | 11,2 | 9,7 | 6,4 | 7,9 | 9,7 | 9,7 | 9,7 |

Steel Qualities (see table):

- 1) Mild A-7
- 2) Boiler Plate
- 3) Structural A-36
- 4) Struct Corten (ASTM A242)
- 5) Cold Rolled C-1018
- 6) Hot Rolled C-1050
- 7) Hot Rolled C-1095
- 8) Hot Rolled C-1095 Annealed
- 9) Stainless Annealed
- 10) Stainless 304 Hot Rolled
- 11) Stainless 316 Cold Rolled

▼ The hydraulic punch cuts the time spent forming holes.



SP-Series, 50 Ton Hydraulic Punch

▼ Shown: SP-50100



- Available as a complete set including electric pump and hoses
- Double-acting cylinder design for fast cycle times
- Punch and die changeover tools included
- Lifting bracket included
- Adjustable power stripper prevents movement of the metal during stripping
- CR-400 female couplers included.

Cuts the Time Spent Forming Holes



Depth Stop

For simplified repetitive punching applications an adjustable Depth Stop is available. Order model number: **SP-110**.



Foot Mounting Kit

A foot mounting kit for easy mounting of the 50 ton punch to workbench or fixture is available. Order model number: **SP-120**.



Ordering Information

The 50-ton Hydraulic Punch may be ordered by itself or as a set with an electric pump. A punch and die may be ordered as a matched set.

Please refer to the selection chart information.




◀ Save time using the 50-ton Enerpac Punch.

▼ Shown below is the 50 ton punch with SP-120 and SP-110 assembled.



50 Ton Double-Acting Hydraulic Punch

▼ QUICK SELECTION CHART PUNCH SETS

| Included | | | | Set Model Number |  (kg) |
|---------------------|------------------|---------------|---------------------|------------------|---|
| Model Number Punch* | Punch & Die Sets | Electric Pump | Hydraulic Hose (2x) | | |
| SP-50 | All ** | - | - | SP-50100 | 116 |
| SP-50 | All ** | ZE4410SE | HC-7206 | SP-5000E | 174 |

* Punch Oil Capacity:
Advance: 278 cm³
Retract: 229 cm³

** All standard sets from chart below.

SP Series



Capacity:

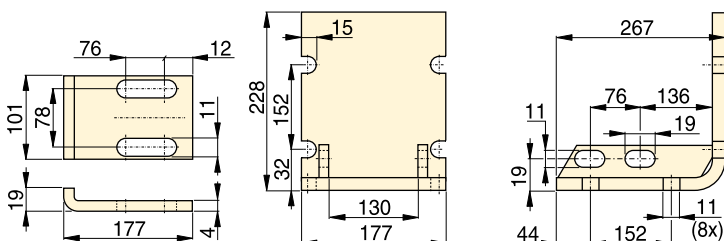
50 ton (490 kN)

Hole Sizes:

13,5 - 26,2 mm

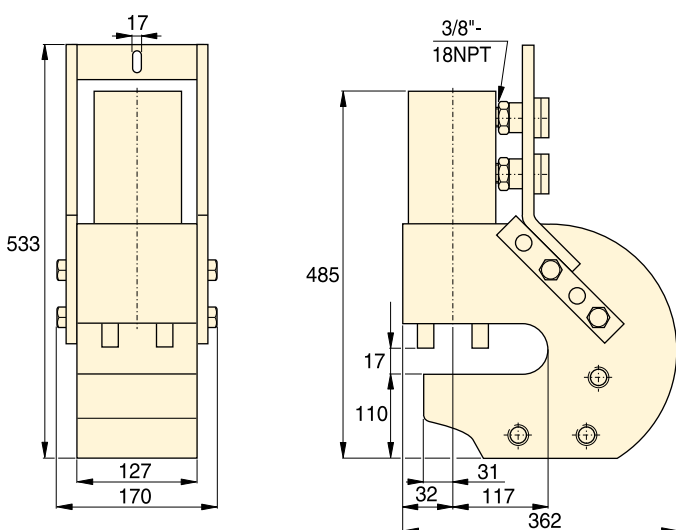
Maximum Operating Pressure:

700 bar



SP-110

SP-120



SP-50



CAUTION!

Material thickness should not exceed hole diameter.



CAUTION!

Chart below is for reference only! Maximum allowable material thickness to be punched varies with set wear.

Steel Qualities (see table below):

- 1) Mild A-7
- 2) Boiler Plate
- 3) Structural A-36
- 4) Struct Corten (ASTM A242)
- 5) Cold Rolled C-1018
- 6) Hot Rolled C-1050
- 7) Hot Rolled C-1095
- 8) Hot Rolled C-1095 Annealed
- 9) Stainless Annealed
- 10) Stainless 304 Hot Rolled
- 11) Stainless 316 Cold Rolled

▼ STANDARD PUNCH AND DIE SELECTION CHART

| Hole Shape | Hole Size (mm) | Bolt Size (mm) | Model Numbers Standard Punch and Die Set | Maximum Allowable Material Thickness To Be Punched (mm) | | | | | | | | | | |
|------------|-------------------|-------------------|--|---|------|------|------|------|------|-----|------|------|------|------|
| | | | | 1) | 2) | 3) | 4) | 5) | 6) | 7) | 8) | 9) | 10) | 11) |
| ● | 13,5 | M12 | SP-150 | 13,5 | 13,5 | 13,5 | 13,5 | 13,5 | 12,4 | 8,1 | 10,2 | 12,4 | 12,4 | 12,4 |
| ● | 16,7 | M16 | SP-170 | - | - | - | - | - | 13,0 | 8,1 | 10,2 | 13,0 | 13,0 | 13,0 |
| ● | 19,8 | M18 | SP-190 | - | - | - | - | - | 12,4 | 8,1 | 10,2 | 12,4 | 12,7 | 12,4 |
| ● | 23,1 | M20 | SP-121 | 14,2 | 14,2 | 14,2 | 12,7 | 14,2 | 8,9 | 5,6 | 8,9 | 8,9 | 8,9 | 8,9 |
| ● | 26,2 | M24 | SP-123 | 14,2 | 14,2 | 14,2 | 11,2 | 14,2 | 7,9 | 4,8 | 7,9 | 7,9 | 7,9 | 7,9 |

LW-Series, Hydraulic Vertical Lifting Wedge

▼ LW-16 with SB-2 and optional LWB-1



- Requires very small access gap of only 10 mm
- Lifting force 16 ton at 700 bar hydraulic pressure
- Each step can spread under full load
- Straight vertical lifting
- Unique interlocking wedge design: no first step bending and risk of slipping out
- Single-acting, spring return cylinder
- Lifting wedge LW-16 includes safety block SB-2
- Includes RC-Series Cylinder with CR-400 coupler.

▼ For lifting heavy equipment with minimum floor clearance the LW-16 is the ideal tool.



LW Series

Maximum Lifting Force:

16 ton (157 kN)

Lifting Stroke:

21 mm

Tip Clearance / Maximum Spread *:

10 mm / 81,5 mm

Maximum Operating Pressure:

700 bar



Power Box

Tool box with P-392 hand pump, gauge adaptor assembly, hose and LW-16.

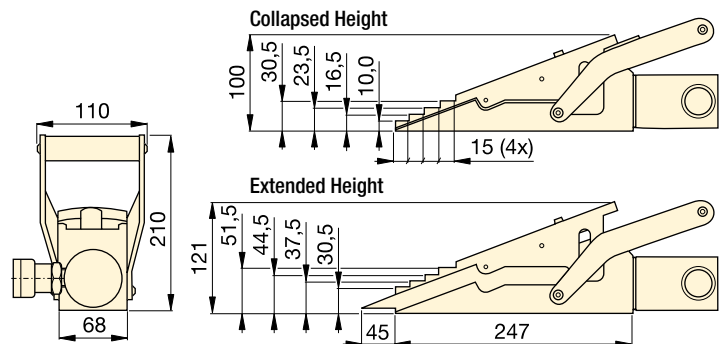
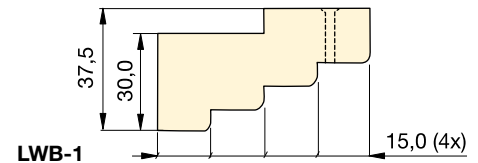
Page: 55



Control Manifolds

Control Manifold to control two or four lifting wedges simultaneously.
AM-21 with 3 ports 3/8" NPTF
AM-41 with 5 ports 3/8" NPTF.

Page: 118



| Maximum Lifting Force | Lifting Stroke | Model Number | Tip Clearance | Maximum Operating Pressure | Oil Capacity | |
|-----------------------|----------------|--------------|---------------|----------------------------|--------------------|------|
| ton (kN) | (mm) | | (mm) | (bar) | (cm ³) | (kg) |
| 16 (157) | 21 | LW-16 | 10 | 700 | 78 | 9,0 |

Use optional stepped block LWB-1 to increase wedge lifting height by 30 mm.

* Using LWB-1.

Hydraulic Machine Lifts

▼ SOH-10-6



SOH Series

Lifting Capacity:

8,5 - 20 ton

Stroke:

136 - 157 mm

Toe Clearance:

20 mm

Maximum Operating Pressure:

700 bar

- For lifting heavy equipment with minimum available access
- Remote hydraulic pump enhances safety
- Low height lifting toe
- Precision guided to reduce friction and isolate cylinder from side-loads
- Two extendable support feet provide extra stability
- Includes RC-Series DUO Cylinder with CR-400 coupler.



RSM-Series Flat-Jac®

Low height, single acting spring-return cylinders are ideal for space restricted applications.

Page: 22

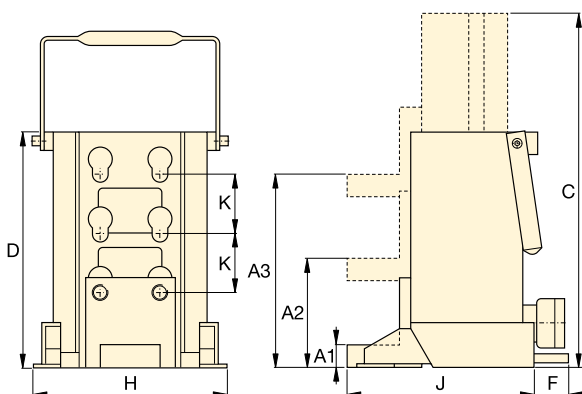


Load Skates

In combination with the Enerpac Machine Lifts we recommend Load Skates for moving heavy loads.

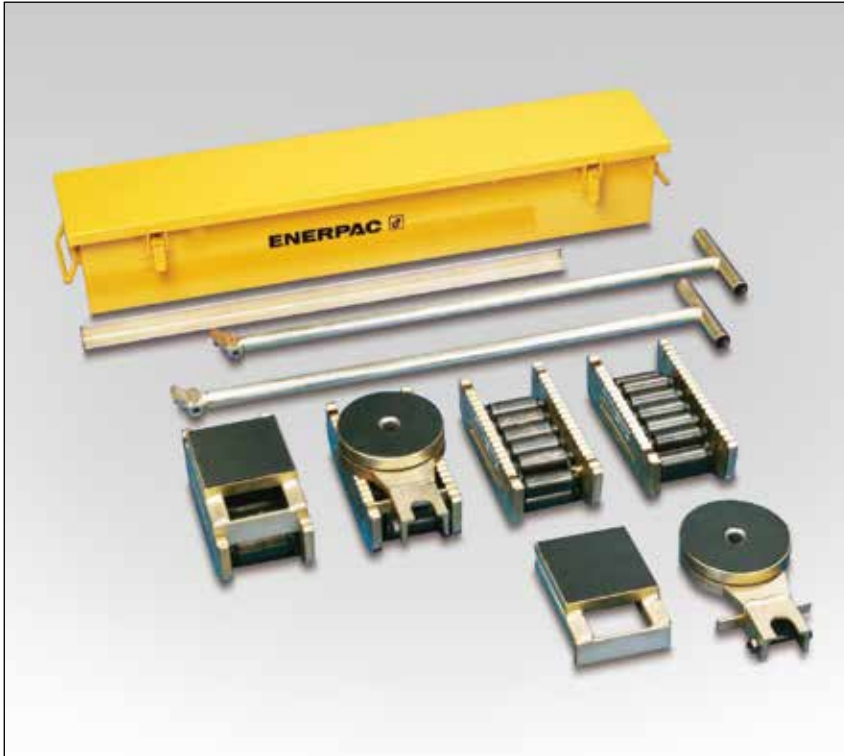
Page: 174

▼ Limited access under this machine makes the Enerpac hydraulic machine lift the perfect solution.



| Capacity | Toe Clearance (mm) | | | Stroke | Model Number | Oil Capacity | Dimensions (mm) | | | | | | 🏋️ (kg) |
|----------|--------------------|------------|------------|--------|--------------|--------------|---------------------|---------------------|----|-----|-----|----|---------|
| | Minimum A1 | Central A2 | Maximum A3 | | | | Total Ext. Height C | Total Body Height D | F | H | J | K | |
| 8,5 (75) | 20 | 95 | 169 | 136 | SOH-10-6 | 224 | 430 | 294 | – | 190 | 214 | 74 | 26 |
| 20 (178) | 30 | 110 | 190 | 157 | SOH-23-6 | 525 | 472 | 320 | 65 | 265 | 250 | 80 | 45 |

▼ Shown: Set ERS-20



- Rugged and sturdy construction for long life
- Low profile construction for increased stability
- Low rolling-resistance allows for easy transportation
- Attachable load leveling plates and swivel turntables for turning corners.

Move Heavy Loads Easily and Safely



Sets (see table) include all components necessary to handle a variety of applications.

Two **ELB-1** link-up bars, two **ERH-1** handles (875 mm long) and one **EMB-1** metal box are included.

Optional long handle **ERH-2** (1180 mm) available for 60 and 80 ton only.



Lifting Wedge and Machine Lifts

To place the Load Skates, the load must first be lifted. This can be done easily and safely using the Enerpac Lifting Wedge or Machine Lifts.

Page: 172

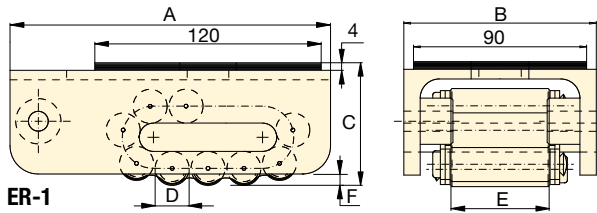
▼ Heavy transport using Load Skates. The machine is first lifted, using SOH-Series Enerpac Machine Lifts.



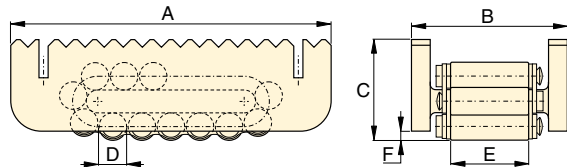
▼ Chemical tank transportation: The first few centimetres the load was lifted with RCS-Series low height cylinders and then moved on to load skates for transportation.



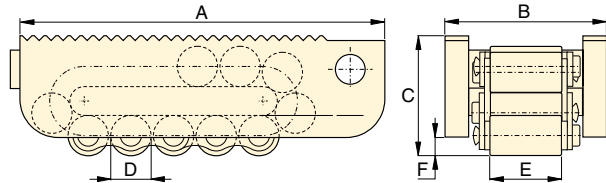
Heavy Duty Caterroller™ Load Skates



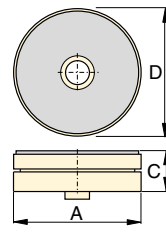
ER-1



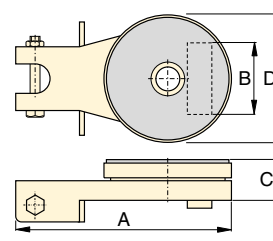
ER-10, ER-15, ER-30



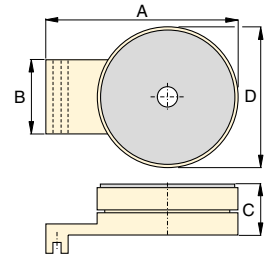
ER-60, ER-80



ES-1, Turntable Swivel



ES-10, ES-15, ES-30 Turntable Swivel



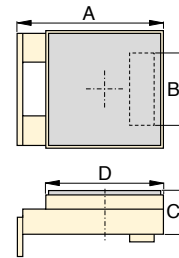
ES-60, ES-80, Turntable Swivel

**EL
ER
ES
Series**

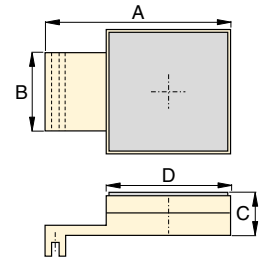


Maximum Carrying Capacity:
80 ton (711 kN)

| Load Skates may be ordered separately or as a matched set. | | | | | |
|--|------------------|------------------|------------------------|----------------------|---|
| Set Capacity * | Set Model Number | Load Skates (4x) | Turntable Swivels (2x) | Leveling Plates (2x) | Weight including handles and metal box (kg) |
| 20 (178) | ERS-20 | ER-10 | ES-10 | ELP-10 | 49 |
| 30 (267) | ERS-30 | ER-15 | ES-15 | ELP-15 | 55 |
| 60 (533) | ERS-60 | ER-30 | ES-30 | ELP-30 | 75 |



ELP-10, ELP-15, ELP-30 Levelling Plate



ELP-60, ELP-80 Levelling Plate

* Sets are designed to enable two skates to take full load for extra safety on uneven floor surfaces

| | Capacity ton (kN) | Model Number | Dimensions (mm) | | | | | | Contact Rolls per Skate | Rollers per Skate | Weight (kg) |
|---------------------------------|----------------------|--------------|-----------------|-----|-----|-----|----|----|-------------------------|-------------------|-------------|
| | | | A | B | C | D | E | F | | | |
| Load Skates | 1 (8,9) | ER-1 | 170 | 100 | 65 | 18 | 51 | 6 | 4 | 11 | 3,8 |
| | 10 (89) | ER-10 | 210 | 102 | 66 | 18 | 51 | 6 | 5 | 15 | 5,2 |
| | 15 (133) | ER-15 | 220 | 115 | 75 | 24 | 60 | 10 | 4 | 13 | 7,3 |
| | 30 (267) | ER-30 | 270 | 130 | 92 | 30 | 68 | 10 | 4 | 13 | 13,0 |
| | 60 (533) | ER-60 | 380 | 168 | 125 | 42 | 76 | 16 | 4 | 13 | 31,9 |
| Turntable Swivel | 1 (8,9) | ES-1 | 207 | - | 26 | 90 | - | - | - | - | 1,1 |
| | 10 (89) | ES-10 | 220 | 73 | 42 | 130 | - | - | - | - | 3,7 |
| | 15 (133) | ES-15 | 220 | 86 | 42 | 130 | - | - | - | - | 3,7 |
| | 30 (267) | ES-30 | 250 | 96 | 48 | 150 | - | - | - | - | 5,3 |
| | 60 (533) | ES-60 | 275 | 114 | 61 | 190 | - | - | - | - | 13,7 |
| Levelling Plate | 10 (89) | ELP-10 | 149 | 73 | 42 | 120 | - | - | - | - | 3,7 |
| | 15 (133) | ELP-15 | 149 | 86 | 42 | 120 | - | - | - | - | 3,7 |
| | 30 (267) | ELP-30 | 178 | 96 | 48 | 130 | - | - | - | - | 5,3 |
| | 60 (533) | ELP-60 | 270 | 114 | 61 | 180 | - | - | - | - | 13,8 |
| | 80 (711) | ELP-80 | 350 | 128 | 61 | 200 | - | - | - | - | 18,8 |

▼ CM-16



- Protect your equipment from dust, water, grease and dirt
- Reduce losses on the jobsite, maintenance area or shop
- Durable steel, painted with rust-resistant primer and finished in durable enamel
- Heavy duty hinges and lifting handles
- Lockable.

▼ When not storing the lifting system, this heavy-duty storage case doubles as a work station.



CM Series

Case Size:

19 - 453 litres

Protect your Equipment



Maintenance Sets

Enerpac Maintenance sets are a complete assortment of hydraulic powered tools.

Using these sets allows you to quickly configure a unique tool to meet your most difficult jobs.

Built around the Enerpac lightweight hand pump, hose and cylinder, these sets enable you to push, pull, lift, press, straighten, spread and clamp with forces up to 12,5 ton.

Page: **164**




Hydraulic Pullers

These hydraulic pullers eliminate time-consuming and unsafe hammering, heating or prying. Damage to parts is minimized

through the use of controlled hydraulic power.

Page: **145**

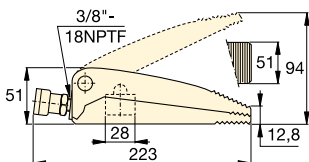
| Case Size (litres) | Model Number | Dimensions L x W x H (mm) | Thickness (mm) |  (kg) |
|-----------------------|--------------|---------------------------------|-------------------|---|
| 19 | CM-6 | 597 x 178 x 178 | 0,9 | 7 |
| 32 | CM-1 | 635 x 292 x 168 | 0,9 | 8 |
| 127 | CM-4 | 787 x 457 x 355 | 1,5 | 16 |
| 212 | CM-7 | 1206 x 381 x 457 | 1,9 | 57 |
| 453 | CM-16 | 1219 x 609 x 609 | 1,5 | 55 |

Hydraulic Wedgie and Spread Cylinders

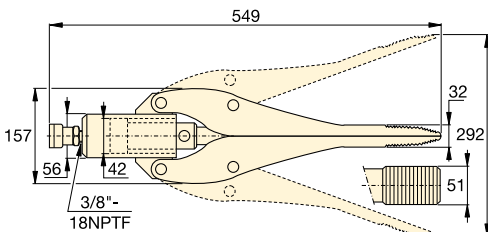
▼ Shown clockwise from top: **WR-15, WR-5, A-92**



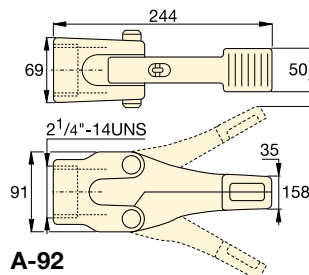
- **WR-5:** For use in very confined work areas
- **WR-15:** For long stroke spreading applications
- **Single-acting, spring return**
- **A-92:** Spreader attachment; threads on 10 ton RC-Series cylinders * (except RC-101).




WR-5



WR-15



A-92

| Cylinder Capacity | Tip Clearance | Model Number | Maximum Spread | Cylinder Effective Area | Oil Capacity |  |
|-------------------|---------------|---------------|----------------|-------------------------|--------------------|---|
| ton (kN) | (mm) | | (mm) | (cm ²) | (cm ³) | (kg) |
| 1,0 (8,9) | 12,8 | WR-5 | 94 | 6,5 | 10 | 2,3 |
| 0,75 (6) | 32,0 | WR-15 | 292 | 14,5 | 64 | 11,3 |
| 1,0 (8,9) | 35,0 | A-92 * | 158 | – | – | 3,6 |

* Maximum system pressure must be limited to half the rated pressure (350 bar).

A WR Series



Capacity:

0,75 - 1,0 ton

Tip Clearance:

12,8 - 35 mm

Maximum Spread:

94 - 292 mm

Maximum Operating Pressure:

700 bar



RC-Series Cylinders

10 ton RC-Series DUO cylinders (except RC-101) fit into A-92 Spreader Attachment.

Page: **6**



Porta Power Sets

Portable tool sets with hand pump, gauge adaptor assembly, hose and WR-5, RC-, RCS, RSM- or LW-Series cylinder.

Page: **55**



Best Match Hand Pump

To power your WR-5 and WR-15 the **P-392** hand pump is an ideal choice. Use Enerpac H700-Series hose (page 114) for hydraulic connection.

Page: **66**

▼ A WR-5 wedgie cylinder is used to loosen a bridge bearing.



WHC-Series, Hydraulic Cutterheads

▼ Shown from left to right: WHC-4000, WHC-750

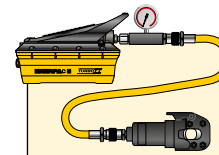


WHC, WHR, STC Series

Capacity:
3 - 20 ton

Cutting Capacity:
Ø 13 - 101 mm

Maximum Operating Pressure:
700 bar



Tool-Pump Sets

Cutterheads marked with an * are available as sets (pump, tool, gauge, couplers and hose) for your ordering convenience.

| Cutterhead Model Nr. | Pump Model Nr. | Set Model Number |
|----------------------|----------------|-------------------|
| WHC-750 | P-392 | STC-750H |
| WHC-750 | P-392FP | STC-750FP |
| WHC-750 | PATG-1102N | STC-750A |
| WHC-1250 | P-392 | STC-1250H |
| WHC-1250 | P-392FP | STC-1250FP |
| WHC-1250 | PATG-1102N | STC-1250A |

- Single-acting, spring return on all models, except WHR-1250
- Guillotine action for smooth cutting operation
- Lifting handles on larger models for easy transport
- Carrying bag included for easy carrying and tool protection
- Ideal for use with most Enerpac pumps featuring 3-way valve or dump valve and 700 bar pressure rating (except WHR-1250, which requires 4-way valve)
- CR-400 coupler and dust cap included on all models.

▼ Steel rope is easily cut with the smooth guillotine action of an Enerpac cutterhead.



▼ Selection Chart Maximum Cutting Capacities (Ø in mm)

| Cutter Head Operation | Capacity ton | Model Number | Oil Capacity (cm³) | Length (mm) | Steel Wire Rope, Hemp-core or IWRC 6x7 6x12 6x19 | Round Bar | | | | Wire Strand | | | | Cable | | Replacement Blades (kg) | |
|-----------------------|-----------------|------------------|-----------------------|----------------|---|--------------------|----------------------|------------------|-----------------|--------------------------|----------------------------|------|------------------------|---------------------|---------------------------|----------------------------|-----------------|
| | | | | | | Copper Wire or Bar | Aluminum Wire or Bar | Soft Steel Bolts | Reinforcing Bar | Bare Copper Wire Strands | Bare Aluminum Wire Strands | ACSR | Guy Steel Wire Strands | Telephone Cable CPP | Underground Cable (Power) | | |
| Single-Acting | 4 | WHC-750* | 19,7 | 127 | 19 | 19 | 19 | 19 | 13 | 19 | 19 | 19 | 16 | ☆ | ☆ | 3,2 | WCB-750 |
| | 20 | WHC-1250* | 134,4 | 279 | 31 | 31 | 31 | 31 | 25 | 31 | 31 | 31 | 22 | ☆ | ☆ | 11,3 | WCB-1250 |
| | 13 | WHC-2000 | 119,6 | 381 | 25 | 31 | 31 | 22 | ☆ | 50 | 50 | 50 | 19 | ☆ | ☆ | 10,4 | WCB-2000 |
| | 3 | WHC-3380 | 65,5 | 482 | ☆ | ☆ | ☆ | ☆ | ☆ | 76 | 76 | ☆ | ☆ | 85 | 85 | 9,1 | WCB-3380 |
| | 8 | WHC-4000 | 137,7 | 609 | ☆ | ☆ | ☆ | ☆ | ☆ | 89 | 89 | ☆ | ☆ | 101 | 101 | 14,5 | WCB-4000 |
| Dbl.-Act. | 20 | WHR-1250 | 122,9 | 419 | 31 | 31 | 31 | 31 | 25 | 31 | 31 | 31 | 22 | ☆ | ☆ | 11,8 | WCB-1250 |

* Available in sets with P-392 Hand Pump, P-392FP Foot Pump or PATG-1102N Turbo Air Pump.

☆ Will not cut designated material

Self-Contained Hydraulic Cutters

▼ Shown from left to right: WMC-2000, WMC-750



- Rotating heads for operator convenience
- Guillotine action for smooth cutting operation
- Carrying bag included for easy carrying and tool protection
- Velcro straps to secure handles on larger models for easy carry
- Spring return for easy operation
- Light weight self-contained tool, can be used anywhere.

WMC Series



Capacity:

3 - 20 ton

Cutting Capacity:

Ø 14 - 85 mm



Replacement Blades

60-62HRc hardened replacement blades.

| For Cutter Model Number | Order Blades Model Number |
|-------------------------|---------------------------|
| WMC-580 | WCB-750 |
| WMC-750 | WCB-750 |
| WMC-1000 | WCB-1000 |
| WMC-1250 | WCB-1250 |
| WMC-1580 | WCB-1580 |
| WMC-2000 | WCB-2000 |
| WMC-3380 | WCB-3380 |



CAUTION !

A "☆" in the charts on these pages means that this hydraulic cutter is not designed to cut this size or type of material. Any attempt to do so may result in personal injury and damage to the unit and will void the warranty.

▼ Selection Chart Maximum Cutting Capacities (Ø in mm)

| Capacity ton | Model Number | Length (mm) | Steel Wire Rope, Hempcore or IWRC 6x7 6x12 6x19 | Round Bar | | | | Wire Strand | | | | | Cable | | Weight (kg) |
|-----------------|-------------------|----------------|--|--------------------|----------------------|------------------|-----------------|--------------------------|----------------------------|-------------------|------------------------|------------------------|---------------------|---------------------------|----------------|
| | | | | Copper Wire or Bar | Aluminum Wire or Bar | Soft Steel Bolts | Reinforcing Bar | Bare Copper Wire Strands | Bare Aluminum Wire Strands | ACSR Wire Strands | Guy Steel Wire Strands | Guy Steel Wire Strands | Telephone Cable CPP | Underground Cable (Power) | |
| 4 | WMC-580 | 381 | 16 | 16 | 16 | 16 | 10 | 16 | 16 | 16 | 14 | 14 | ☆ | ☆ | 3,6 |
| 4 | WMC-750 | 381 | 17 | 19 | 19 | 17 | 13 ** | 19 | 19 | 19 | 14 | 14 | ☆ | ☆ | 3,6 |
| 20 | WMC-1000 * | 679 | ☆ | 19 | 19 | 19 | 19 | ☆ | ☆ | ☆ | ☆ | ☆ | ☆ | ☆ | 11,3 |
| 20 | WMC-1250 | 679 | 31 | 28 | 31 | 31 | 22 | 31 | 31 | 31 | 22 | 25 | ☆ | ☆ | 10,4 |
| 6 | WMC-1580 | 558 | 19 | 19 | 19 | 19 | ☆ | 38 | 38 | 38 | 16 | 16 | ☆ | ☆ | 6,8 |
| 13 | WMC-2000 | 628 | 25 | 31 | 31 | 22 | ☆ | 50 | 50 | 50 | 19 | 19 | ☆ | ☆ | 10,9 |
| 3 | WMC-3380 | 660 | ☆ | ☆ | ☆ | ☆ | ☆ | 46 | 42 | 76 | 76 | ☆ | 85 | 85 | 10,0 |

* Cuts 12 mm alloy chain grade 70 (type G7 transport or tie-down) or grade 80 (for overhead lifting applications)

** Low Alloy ☆ Will not cut designated material.

STB-Series, Pipe Bender Sets

▼ Shown: STB-101H



Quick, Safe and Wrinkle-free Bending

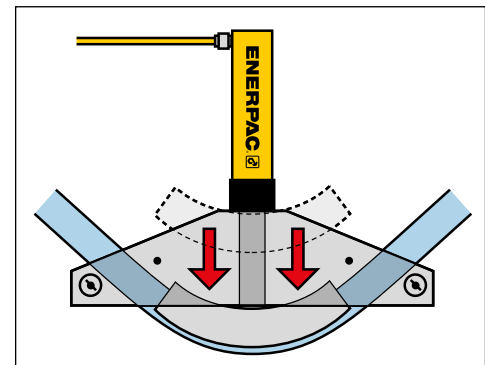


'One Shot' and 'Sweep'

One shot shoes give up to a 90° bend without resetting.









Sweep shoes are used where increasing radii are required for multiple parallel pipe installations.

- Makes smooth, wrinkle-free bends
- Sets include genuine Enerpac cylinder, hose and manual, air or electric pump
- Sets are also available without hydraulics
- Bending shoes and bending frame are lightweight, heat-treated aluminium
- All sets include sturdy steel storage case
- All sets include BZ-12091 angle indicator for accurate bending
- BZ-12377 Shoe Lock Pin included in every set
- Eject-O-Matic™ benders (STB-202 models) have double-acting cylinder to eject pipe from the bending shoe.



▲ Typical one shot bending operation.

▼ SELECTION CHART

| Pipe Range Nominal Size (inch) | | Bender Set Model Number | Hand Pump * | Air Pump * | Electric Pump * | | Cylinder * | Hose * | Saddle * |  (kg) |
|--------------------------------------|-----------|-------------------------------|---|---|---|---|---|---|---|---|
| One Shot | Sweep | |  |  |  |  |  |  |  | |
| 1/2 - 2 | - | STB-101X | - | - | - | - | - | - | A-12 | 40 |
| | | STB-101N | - | - | - | - | RC-1010 | HC-7206 | A-12 | 48 |
| | | STB-101H | P-392 | - | - | - | RC-1010 | HC-7206 | A-12 | 52 |
| | | STB-101A | - | PATG-1102N | - | - | RC-1010 | HC-7206 | A-12 | 54 |
| | | STB-101E | - | - | PUJ-1200E ²⁾ | - | RC-1010 | HC-7206 | A-12 | 57 |
| 1 - 2 | 2 1/2 - 4 | STB-221X | - | - | - | - | - | - | A-29 | 104 |
| | | STB-221N | - | - | - | - | RC-2510 | HC-7206 | A-29 | 119 |
| | | STB-221H | P-80 | - | - | - | RC-2510 | HC-7206 | A-29 | 130 |
| 1 1/4 - 4 | - | STB-202X ¹⁾ | - | - | - | - | - | - | A-29 | 143 |
| | | STB-202N ¹⁾ | - | - | - | - | RR-3014 | HC-7206 (2x) | A-29 | 174 |
| | | STB-202E ¹⁾ | - | - | - | ZU4408SE ²⁾ | RR-3014 | HC-7206 (2x) | A-29 | 212 |

* See corresponding sections in this catalog for more detailed specifications.

¹⁾ Eject-O-Matic™

²⁾ For 115 volt applications replace the last digit of Set Model Number and pump from 'E' to 'B'.

Pipe Bender Sets

| Nominal Pipe Size (inch) | Wall Thickness (mm) | Schedule Pipe * | Pipe Bend Inside Radius (inch) | STB-101 | STB-221 ø 1 - 2" One Shot | STB-202 | One Shot Bending Shoe Model Number | Sweep Bending Shoe Model Number |
|-----------------------------|------------------------|-----------------|-----------------------------------|----------------------|---------------------------------|-----------------------|------------------------------------|---------------------------------|
| | | | | ø ½ - 2" One Shot | ø 2¼ - 4" Sweep | ø 1¼ - 4" One Shot | | |
| ½ | 2,8 | 40 | 27/8 | Yes | - | - | BZ-12011 | - |
| | 3,7 | 80 | | Yes | - | - | | |
| | 4,7 | 160 | | WS | - | - | | |
| | 7,5 | DEH | | WS | - | - | | |
| ¾ | 2,9 | 40 | 4 | Yes | - | - | BZ-12021 | - |
| | 3,9 | 80 | | Yes | - | - | | |
| | 5,5 | 160 | | WS | - | - | | |
| | 7,8 | DEH | | WS | - | - | | |
| 1 | 3,4 | 40 | 5½ | Yes | Yes | - | BZ-12031 | - |
| | 4,5 | 80 | | Yes | Yes | - | | |
| | 6,4 | 160 | | WS | WS | - | | |
| | 9,1 | DEH | | - | WS | - | | |
| 1¼ | 3,6 | 40 | 67/16 | Yes | Yes | Yes | BZ-12041 | - |
| | 4,9 | 80 | | Yes | Yes | Yes | | |
| | 6,4 | 160 | | WS | WS | Yes | | |
| | 8,7 | DEH | | - | WS | WS | | |
| 1½ | 3,7 | 40 | 7 5/16 | Yes | Yes | Yes | BZ-12051 | - |
| | 5,1 | 80 | | Yes | Yes | Yes | | |
| | 7,1 | 160 | | WS | WS | Yes | | |
| | 10,2 | DEH | | - | WS | WS | | |
| 2 | 3,9 | 40 | 8 5/16 | - | Yes | Yes | BZ-12061 | - |
| | 5,5 | 80 | | - | Yes | Yes | | |
| | 8,7 | 160 | | - | WS | Yes | | |
| 2½ | 5,2 | 40 | 9½ | - | Yes | Yes | BZ-12341 | BZ-12382 |
| | 7,0 | 80 | | - | WS | Yes | | |
| | 9,5 | 160 | | - | WS | Yes | | |
| 3 | 5,5 | 40 | 11¼ | - | Yes | Yes | BZ-12351 | BZ-12383 |
| | 7,6 | 80 | | - | WS | Yes | | |
| 3½ | 5,7 | 40 | 15½ | - | Yes | Yes | BZ-12391 | BZ-12384 |
| | 8,1 | 80 | | - | WS | Yes | | |
| 4 | 6,0 | 40 | 17¾ | - | Yes | Yes | BZ-12392 | BZ-12385 |
| | 8,6 | 80 | | - | - | Yes | | |

* Schedule Pipe: 40 = Standard; 80 = Extra Heavy; 160 = Double Extra Heavy;
DEH = Double Extra Heavy (slightly thicker than 160);
WS = Can be bent using wider spacing for swivel shoes.

STB Series



Nominal Pipe Size:

½ - 4 inch

Maximum Bending:

90°

Maximum Operating Pressure:

700 bar



All bender sets are designed to bend mild steel pipe. For other material please consult Enerpac.

| Frame Assembly | Pivot Pins (2x) | Pivot Shoes (2x) | Bending Shoes included (Shoes with ³⁾ are Sweep, all other shoes are One Shot) | | | | | | | | | Bender Set Model Number | |
|----------------|-----------------|------------------|--|----------|----------|----------|------------------------|------------------------|------------------------|------------------------|------------------------|-------------------------|----------|
| | | | | | | | | | | | | | |
| BZ-12371 | BZ-12375 | BZ-12071 | BZ-12011 | BZ-12021 | BZ-12031 | BZ-12041 | BZ-12051 | BZ-12061 | - | - | STB-101X | | |
| | | | | | | | | | | | | STB-101N | |
| | | | | | | | | | | | | | STB-101H |
| | | | | | | | | | | | | | STB-101A |
| | | | | | | | | | | | | | STB-101E |
| BZ-12372 | BZ-12376 | BZ-13401 | BZ-12031 | BZ-12041 | BZ-12051 | BZ-12061 | BZ-12382 ³⁾ | BZ-12383 ³⁾ | BZ-12384 ³⁾ | BZ-12385 ³⁾ | STB-221X | | |
| | | | | | | | | | | | STB-221N | | |
| | | | | | | | | | | | | STB-221H | |
| BZ-12374 | BZ-12376 | BZ-13401 | - | BZ-12041 | BZ-12051 | BZ-12061 | BZ-12341 | BZ-12351 | BZ-12391 | BZ-12392 | STB-202X ¹⁾ | | |
| | | | | | | | | | | | STB-202N ¹⁾ | | |
| | | | | | | | | | | | | STB-202E ¹⁾ | |