

▼ Shown: STTLS Safe T™ Torque Lock



## Hands-free Torque Wrench System



### Safe T™ Torque Lock

The Safe T™ Torque Lock is suitable for all bolted applications from 140 ft-lbs to 11,175 ft-lbs. using a heavy-duty impact socket.

The patented mechanical locking system creates a hands-free torque wrench solution suitable for Enerpac only square drive tools.

Suitable for:

<b>S-Series</b>	<b>RSQ-Series</b>
S3000X	RSQ3000
S6000X	RSQ5000
S11000X	RSQ11000



### IMPORTANT:

Safe T™ Torque Lock not suitable for use on PTFE coated nuts.

### Safety – Safe T™ Torque Lock

- Transforming Enerpac S-Series and RSQ-Series wrenches into a dedicated hands-free tool
- Improves operator safety during bolting operations by minimizing exposure to pinch points and high-pressure hydraulic connections
- Grips securely to the application in any orientation, including inverted positions
- Minimizes drop hazards of falling tools
- Reduces operator fatigue on overreaching or awkward positioning of the tool

### Simplicity

- With one twist of the locking collar the Safe T™ Torque Lock grips onto the application, firmly holding the full tool weight in place
- Assembles onto the torque wrench with one push of the square drive quick-release button for tightening or loosening
- Locking feature dramatically reduces the number of tool lifts

### Versatility

- Suitable for both S-Series & RSL-Series squaredrive wrenches
- Simple twist & lock mechanism is user friendly, easy to operate
- No additional loose components like reaction washers are needed

▼ *Hands-free torque wrench system: STLLS-model with S-Series torque wrench. The square drive of the wrench can easily be exchanged by the Safe T™ Torque Lock model.*





## Common Torque Lock Applications:

- Oil & Gas flanges
- Tower Crane installation
- Machine installation/assembly (Mining),
- Wind Tower installation etc.

## Industries

- Oil & Gas, Petrochemical
- Wind Power Generation
- Mining
- Marine
- Manufacturing
- Rail and more

## STTL Series

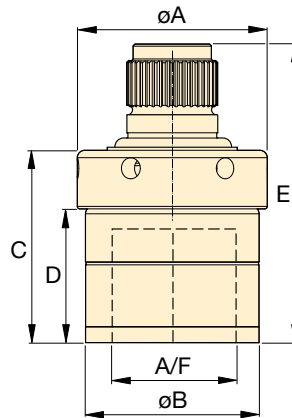
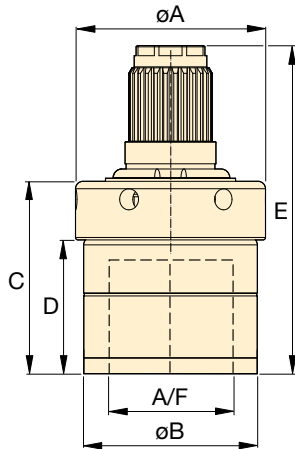


Hexagon Range (A/F):

**1<sup>13</sup>/<sub>16</sub> - 3<sup>1</sup>/<sub>8</sub> inch**

Hexagon Range (A/F)

**46 - 75 mm**



**STTLS**  
for S-Series Spline Fitting

**STTLR**  
for RSQ-Series Spline Fitting



## Back-Up Spanners

Hands free tool to be used to stop back nut from turning during make up or break out.

Hexagon Sizes (A/F)		For use with torque wrench model	Safe T™ Torque Lock Model Number		Dimensions (in)					Wt. (lbs)	Dimensions (mm)					Wt. (kg)
(inch)	(mm)		For S-Series Spline Fitting	For RSQ-Series Spline Fitting	A	B	C	D	E		A	B	C	D	E	
1 <sup>13</sup> / <sub>16</sub>	46	S3000X	STTLS31046	-	3.0	2.8	3.1	2.1	5.2	4.4	77	71	78	54	133	2.0
		RSQ3000	-	STTLR31046					4.8	4.2					121	1.9
2	50	S3000X	STTLS31550	-	3.5	3.2	3.1	2.1	5.2	5.7	89	82	78	54	133	2.6
		RSQ3000	-	STTLR31550					4.8	5.7					123	2.6
2 <sup>3</sup> / <sub>16</sub>	55	S3000X	STTLS31055	-	3.7	3.4	3.3	2.3	5.4	6.6	93	86	83	58	138	3.0
		RSQ3000	-	STTLR31055					5.1	6.4					130	2.9
2 <sup>3</sup> / <sub>8</sub>	-	RSQ3000	-	STTLR315238	3.9	3.6	3.6	2.6	5.4	7.7	99	92	91	67	136	3.5
2	50	RSQ5000	-	STTLR51550	3.5	3.2	3.1	2.1	5.2	5.9	89	82	78	54	132	2.7
		S6000X	STTLS61560M	-					5.9	8.2					150	3.7
-	60	RSQ5000	-	STTLR51560M	3.9	3.6	3.4	2.5	5.7	8.2	99	92	86	62	145	3.7
		S6000X	STTLS615238	-					6.0	8.4					154	3.8
2 <sup>3</sup> / <sub>8</sub>	-	RSQ5000	-	STTLR515238	3.9	3.6	3.6	2.6	5.9	8.4	99	92	91	67	150	3.8
		S6000X	STTLS61565	-					6.8	11.7					172	5.3
2 <sup>9</sup> / <sub>16</sub>	65	RSQ5000	-	STTLR51565	4.2	3.9	4.2	2.9	6.6	11.9	107	100	108	74	168	5.4
		S6000X	STTLS61570	-					6.8	13.0					173	5.9
2 <sup>3</sup> / <sub>4</sub>	70	RSQ5000	-	STTLR51570	4.5	4.2	4.3	3.0	6.7	13.2	114	107	109	76	169	6.0
		S6000X	STTLS61575	-					7.0	12.3					177	5.6
2 <sup>15</sup> / <sub>16</sub>	75	RSQ5000	-	STTLR51575	4.4	4.1	4.4	3.1	6.9	13.2	112	105	113	80	173	5.8
		S6000X	STTLS61575	-					7.7	13.2					195	6.0
-	60	RSQ11000	-	STTLR111560M	3.9	3.6	3.4	2.5	6.1	9.3	99	92	86	62	156	4.2
		S11000X	STTLS111560M	-					6.6	9.3					167	4.2
2 <sup>9</sup> / <sub>16</sub>	65	RSQ11000	-	STTLR111565	4.2	3.9	4.2	2.9	7.5	12.8	107	100	107	74	189	5.8
		S11000X	STTLS111565	-					7.0	12.8					178	5.8
2 <sup>3</sup> / <sub>4</sub>	70	RSQ11000	-	STTLR111570	4.5	4.2	4.3	3.0	7.5	14.1	114	107	109	76	191	6.4
		S11000X	STTLS111570	-					7.1	14.3					181	6.5
2 <sup>15</sup> / <sub>16</sub>	75	RSQ11000	-	STTLR111575	4.4	4.1	4.4	3.1	7.7	13.2	112	105	113	80	195	6.0
		S11000X	STTLS111575	-					7.2	13.2					183	6.0
3 <sup>1</sup> / <sub>8</sub>	-	RSQ11000	-	STTLR1115318	4.8	4.5	4.5	3.2	7.8	16.1	122	115	115	81	197	7.3
		S11000X	STTLS1115318	-					7.3	16.3					185	7.4