

ENERPAC 

POWERFUL SOLUTIONS. GLOBAL FORCE.

Repair Parts Sheet

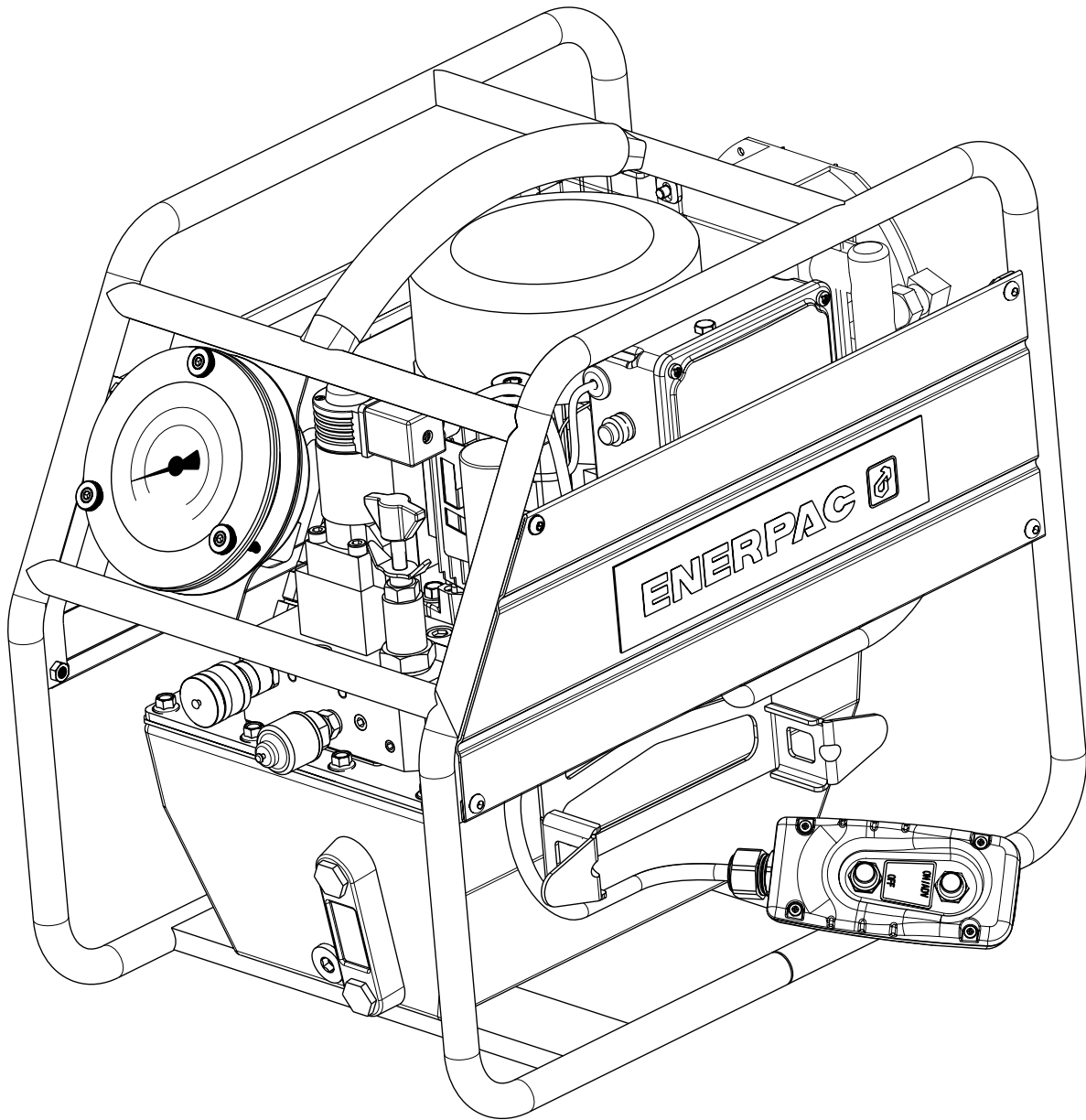
TQ-700 Classic Bolting Pump

L3061 Rev. B 03/13

For Date Codes Beginning with the Letter "A"

To Protect Your Warranty, Use Only ENERPAC Hydraulic Oil.

Enerpac recommends that all kit components be installed to insure optimum performance of the repaired product.



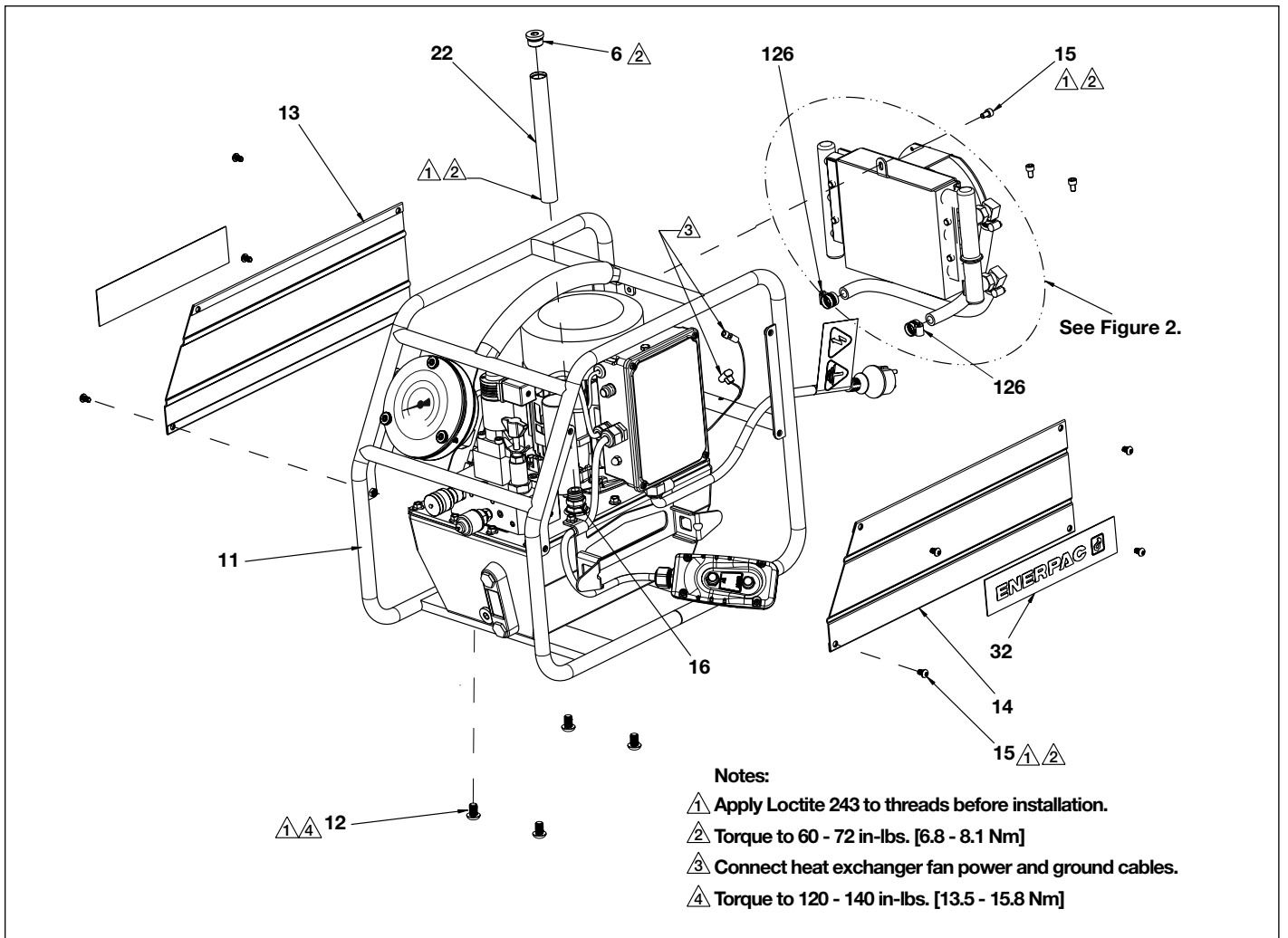


Figure 1, Pump Main Assembly

Repair Parts List (Refer to figure 1)			
Item	Part Number	Qty.	Description
6	B1006016	1	Plug, Socket SAE
11	DD2630201	1	Roll Bar
12	CBE817028-1E	4	BHCS, M8 x 12 Zinc
13	DD2656111	1	Side Panel, Left
14	DD2662111	1	Side Panel, Right
15	☆☆ CBE615028-1E	11	BHCS, M6 x 10mm Zinc
16	F100096-19	1	Union, SAE #8
22	DD2633268	1	Tube, Oil Fill
32	G426026	2	Decal, Enerpac
125	(See Figure 2)	1	Heat Exchanger
126	☆☆ DC9639299	2	Hose Clamp, Steel
☆ Items included with TQHE-115 Heat Exchanger Kit (115 Volt). ☆ Items included with TQHE-230 Heat Exchanger Kit (230 Volt).			

Notes:

- ⚠ Apply Loctite 243 to threads before installation.
- ⚠ Torque to 60 - 72 in-lbs. [6.7 - 8.1 Nm]
- ⚠ Connect heat exchanger fan power and ground cables.
See Figure 2B for locations.

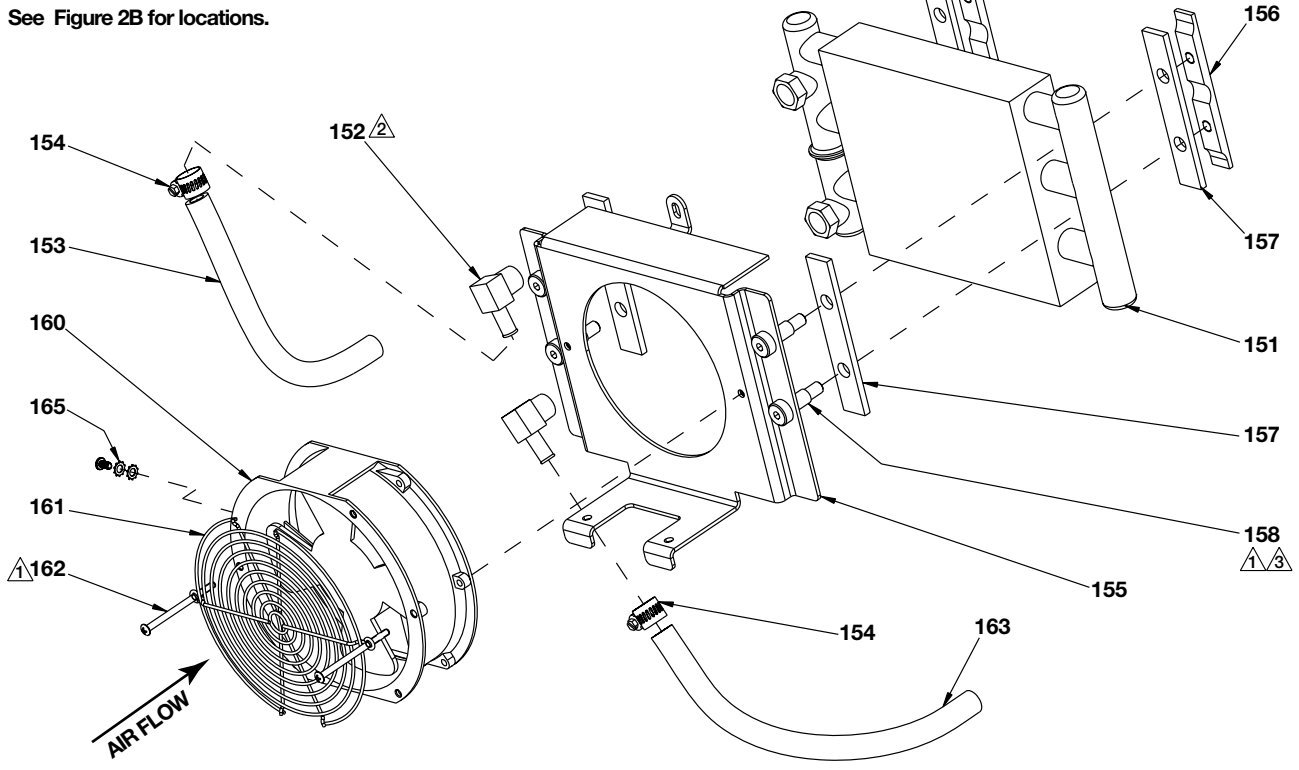


Figure 2A, Oil Cooler Assembly

Repair Parts List (Refer to figure 2A)			
Item	Part Number	Qty.	Description
151	☆☆ DC9546471	1	Heat Exchanger
152	☆☆ PA2029097	2	Hose Barb, Beaded
153	☆☆ DC9335646	1	Hose, Bypass, 8"
154	☆☆ DC9639299	2	Hose Clamp, Steel
155	☆☆ DD2632111	1	Bracket, Heat Exchanger
156	☆☆ DC9555471	2	Bracket, HX Mount
157	☆☆ DC9554037	4	Gasket, HX Mountr
158	☆☆ DC9576242	4	Shoulder Bolt
160	☆ DC8276470	1	Fan, 115V
	☆ DC8277470	1	Fan, 230V
161	☆☆ DC3227689	1	Guard, Fan
162	☆☆ DC9575628	2	Bolt, 8-32 x 2"
163	☆☆ DC9643646	1	Hose, Bypass
165	☆☆ DA15066	2	Lockwasher
☆ Items included in TQHE-115 Heat Exchanger Kit (115 Volt). ☆ Items included in TQHE-230 Heat Exchanger Kit (230 Volt).			

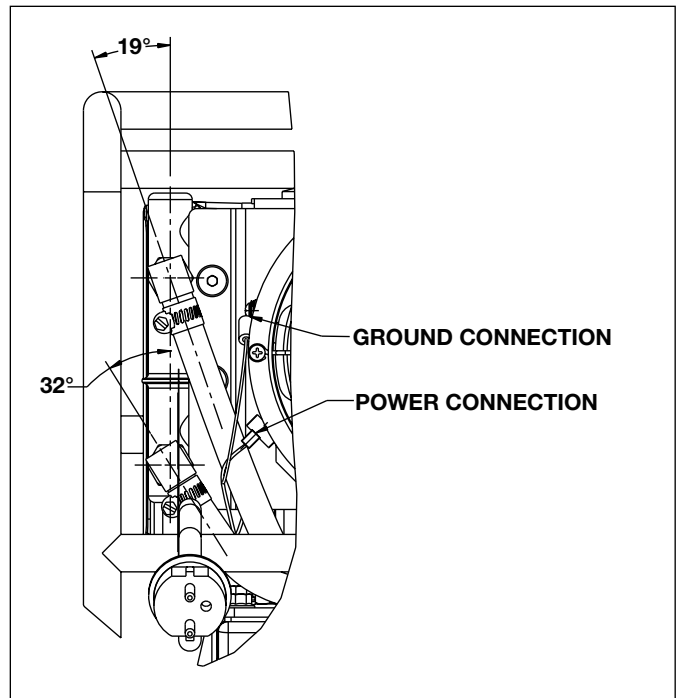


Figure 2B, Oil Cooler Wiring Details

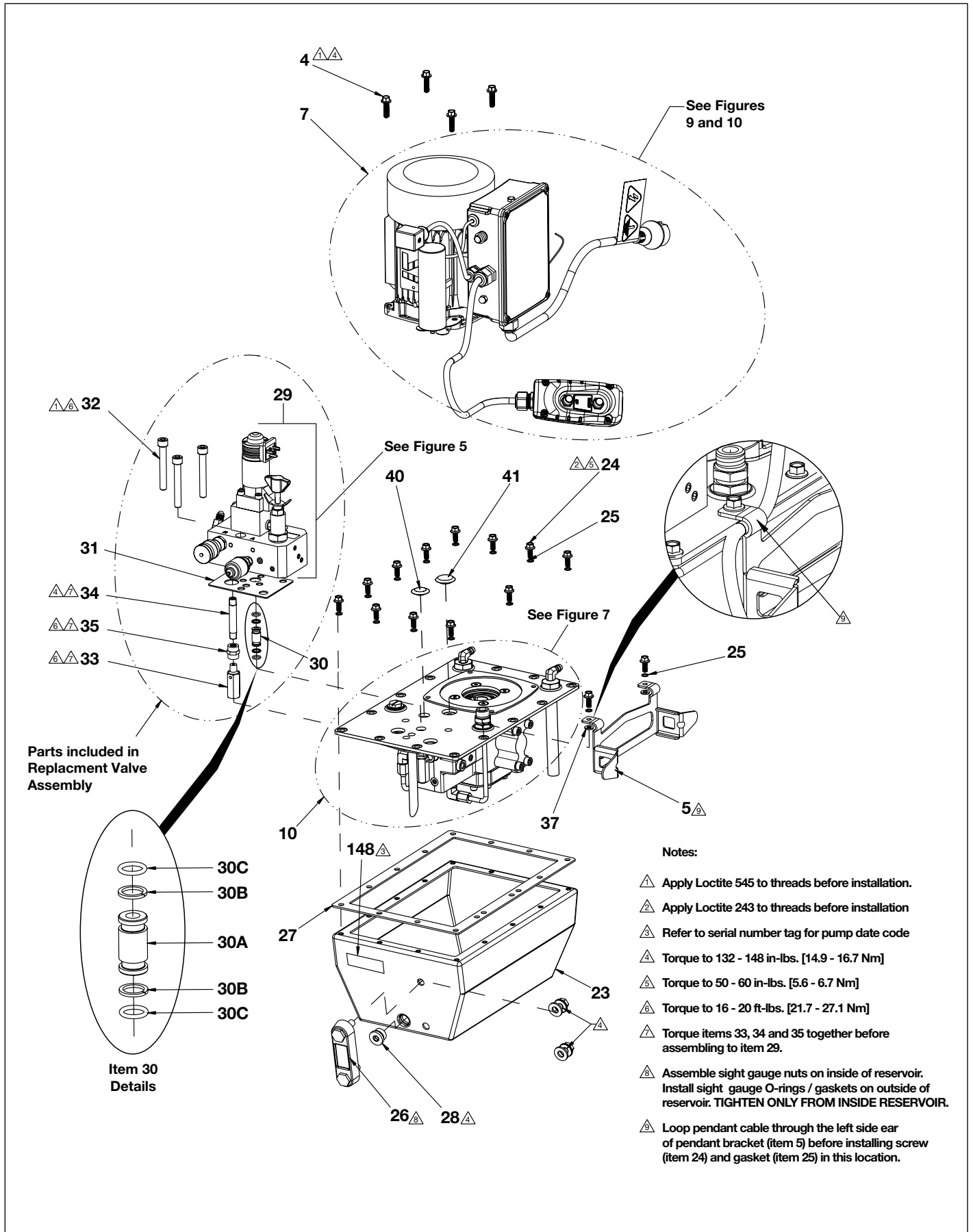


Figure 3, Pump Major Components and Subassemblies

Repair Parts List (Refer to figure 3)			
Item	Part Number	Qty.	Description
4	B2011046	4	HHFCS, 1/4-20 x 1"
5	DD2692111	1	Bracket, Cord
7	(See Figures 9 and 10)	1	Motor and Pendant
10	(See Figure 7)	1	Pump and Coverplate
23	DD2629025	1	Reservoir, 1 Gallon
24	B2005046	14	Screw, 1/3-20 x 5/8"
25	* S3037	14	Gasket, Copper
26	DC2621223	1	Sight Glass Assembly
27	* 85469E	1	Gasket, Reservoir
28	DC8249006	1	Plug, Threaded, Magnetic
29	▲ DD2683900	1	Valve Assembly, 115V
	▼ DD2682900	1	Valve Assembly, 230V
	● DD2786900	1	Valve Assembly, 115V Multiport
	▶ DD2697900	1	Valve Assembly, 230V Multiport
30	▲▼●▶ 68963E	1	Adapter Assembly (includes items 30A, 30B & 30C)
30A	88073E	1	Adapter, Valve
30B	★ B1012564	2	Backup Ring, Split
30C	★ B1007503	2	O-Ring
31	▲▼●▶ 69242E	1	Gasket, Valve
32	▲▼●▶ 99921E	3	SHCS, 3/8-16 x 2"
33	▲▼●▶ 68999E	1	Relief Valve Assy (internal)
34	▲▼●▶ 68917E	1	Pipe Nipple, 1/8"
35	▲▼●▶ 68918E	1	Pipe Coupling
37	* DD2655037	2	Gasket, Cord
148	DD2722026	1	Decal, Product
<p>★ Items included in TQRK Pump Seal Kit. * Items included in TQ700K Cover Plate Gasket Kit. ▲ Items included in VE42TQC-115 Replacement Valve Assembly. ▼ Items included in VE42TQC-230 Replacement Valve Assembly. ● Items included in VE42TQMC-115 Replacement Valve Assembly. ▶ Items included in VE42TQMC-230 Replacement Valve Assembly. Note: Item 29 not sold separately (included only in replacement valve assembly).</p>			

Notes:

- ① Apply Loctite 243 to threads before installation.
- ② Assemble item 19 to 16. Torque to 32 ft-lbs. minimum [43.4 Nm]
- ③ Orient as shown.
- ④ Finger tight.
- ⑤ Torque to 120 - 140 in-lbs. [13.5 - 15.8 Nm]
- ⑥ Apply Teflon tape to item 16 threads prior to assembling to item 19.

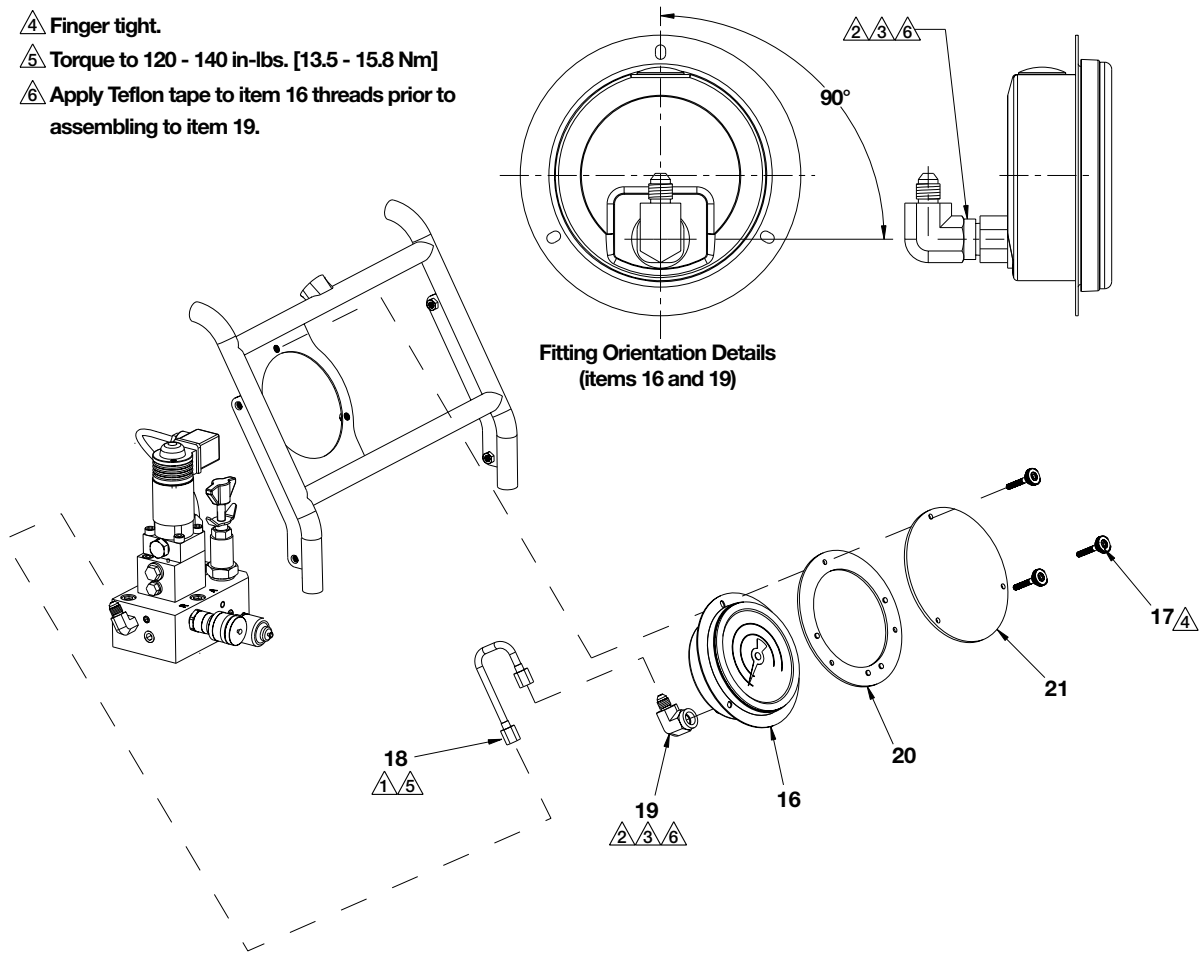


Figure 4, Pressure Gauge Assembly

Repair Parts List (Refer to figure 4)

Item	Part Number	Qty.	Description	Item	Part Number	Qty.	Description
16	DC3760900	1	Pressure Gauge	19	F100094-126	1	Elbow, 1/4" NPT
17	DD2659147	3	Knob, 10-32 Screw	20	DC2926004	1	Flange
18	DD2635268	1	Tube, Gauge	21	DD2627689	1	Guard, Gauge

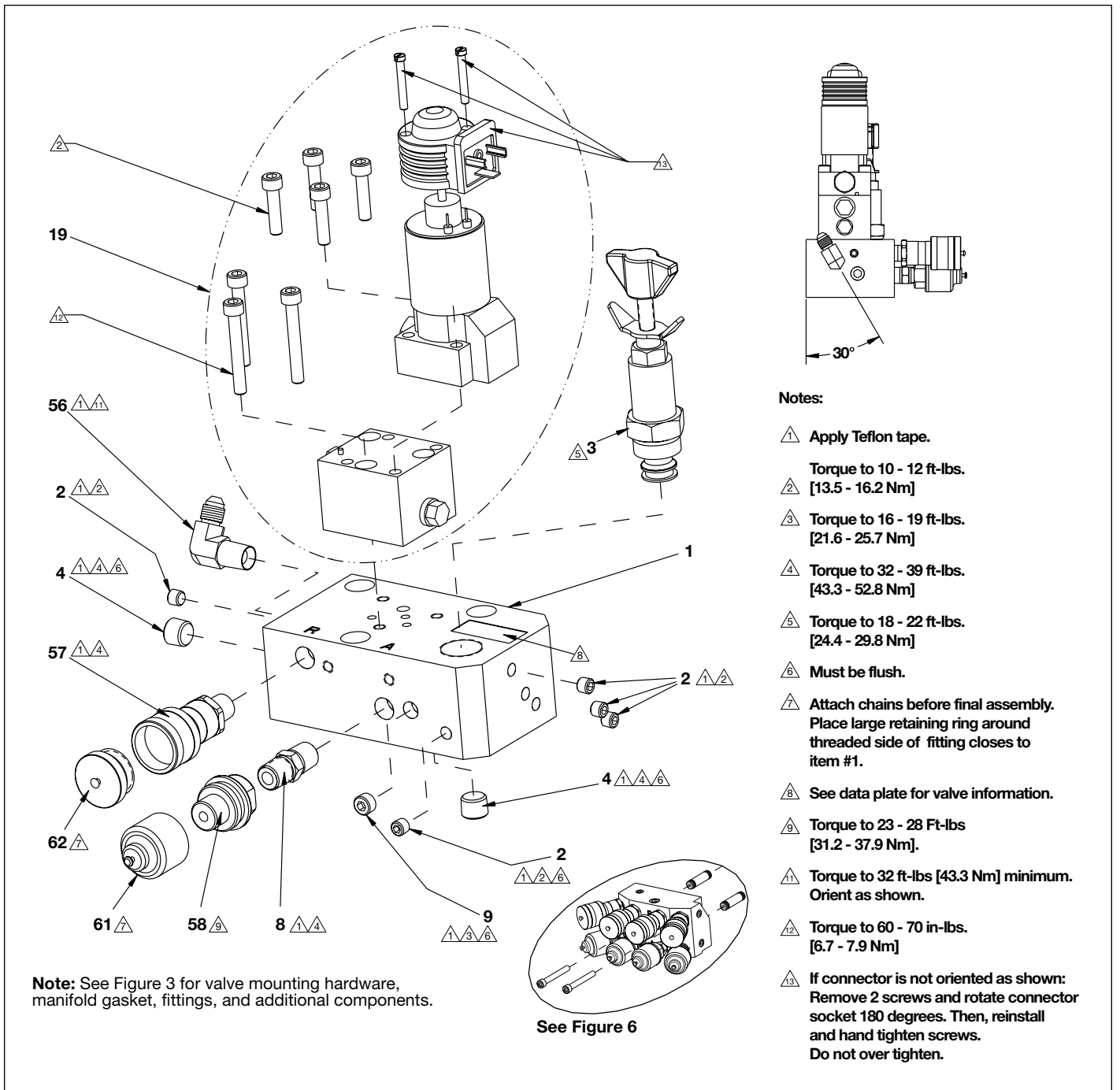


Figure 5, Control Valve Assembly

Repair Parts List (Refer to figure 5)

Item	Part Number	Qty.	Description	Item	Part Number	Qty.	Description
1	† 45422E	1	Manifold, Valve	19	45429E	1	Assy, Solenoid Valve 230V
2	† DC6792245	5	Plug, Flush PTF-SAE .062	56	† 45929E	1	Elbow, Male 1/4"
3	† 45423SR	1	Cartridge, User Adj. Relief	57	U962148134-2	1	Coupler, Female
4	† A1016245	1	Plug, 1/4" Flush	58	DC6188020	1	Coupler
8	4100067	1	Nipple, 1/4"	61	DC6187234	1	Cap, Dust
9	† DC6793245	1	Plug, Flush, PTF-SAE	62	DC6629020	1	Dust Cap, Metal
19	45424E	1	Assy, Solenoid Valve 115V				

† Items included in 45422SR Valve Manifold Repair Kit.

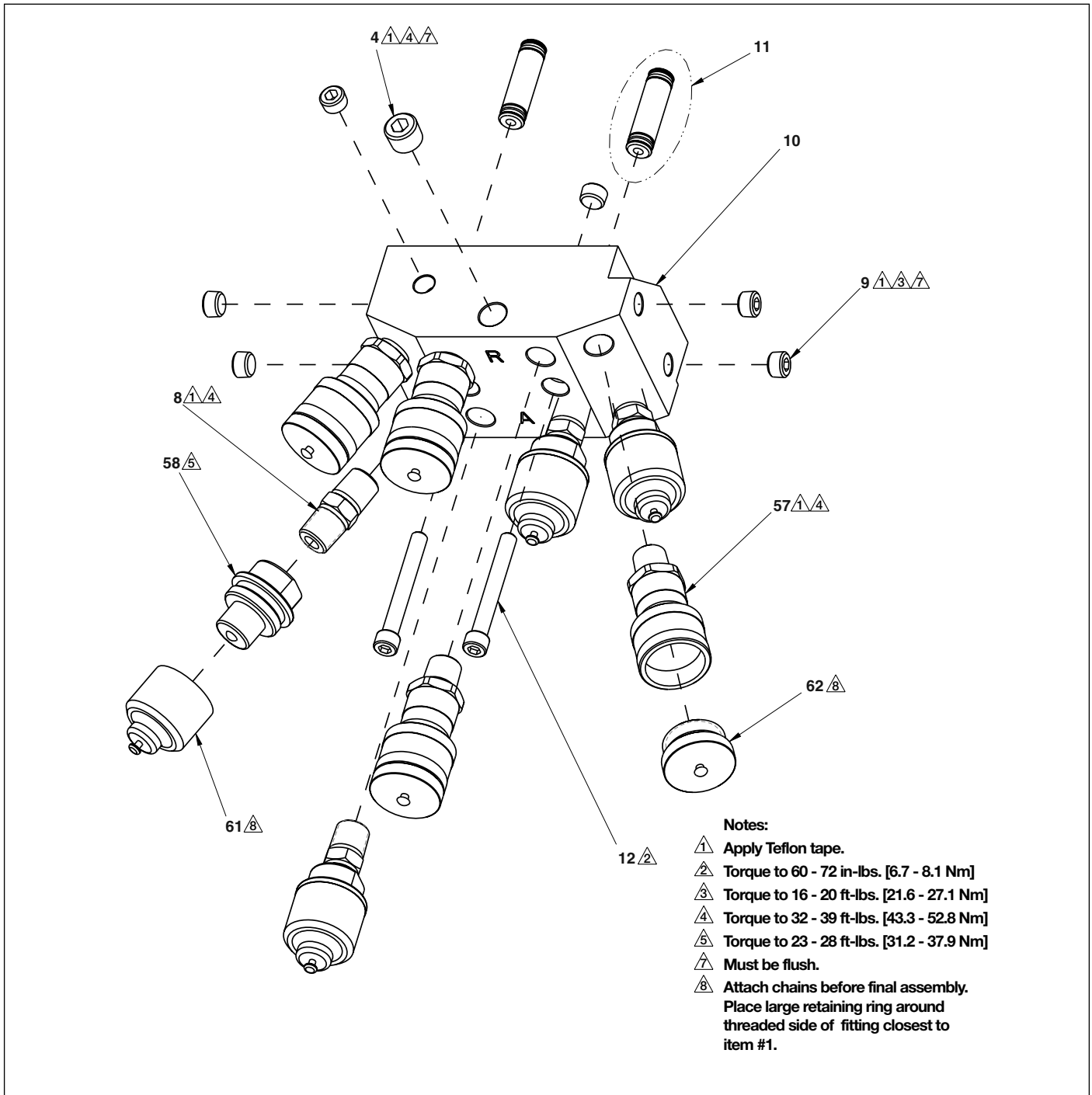
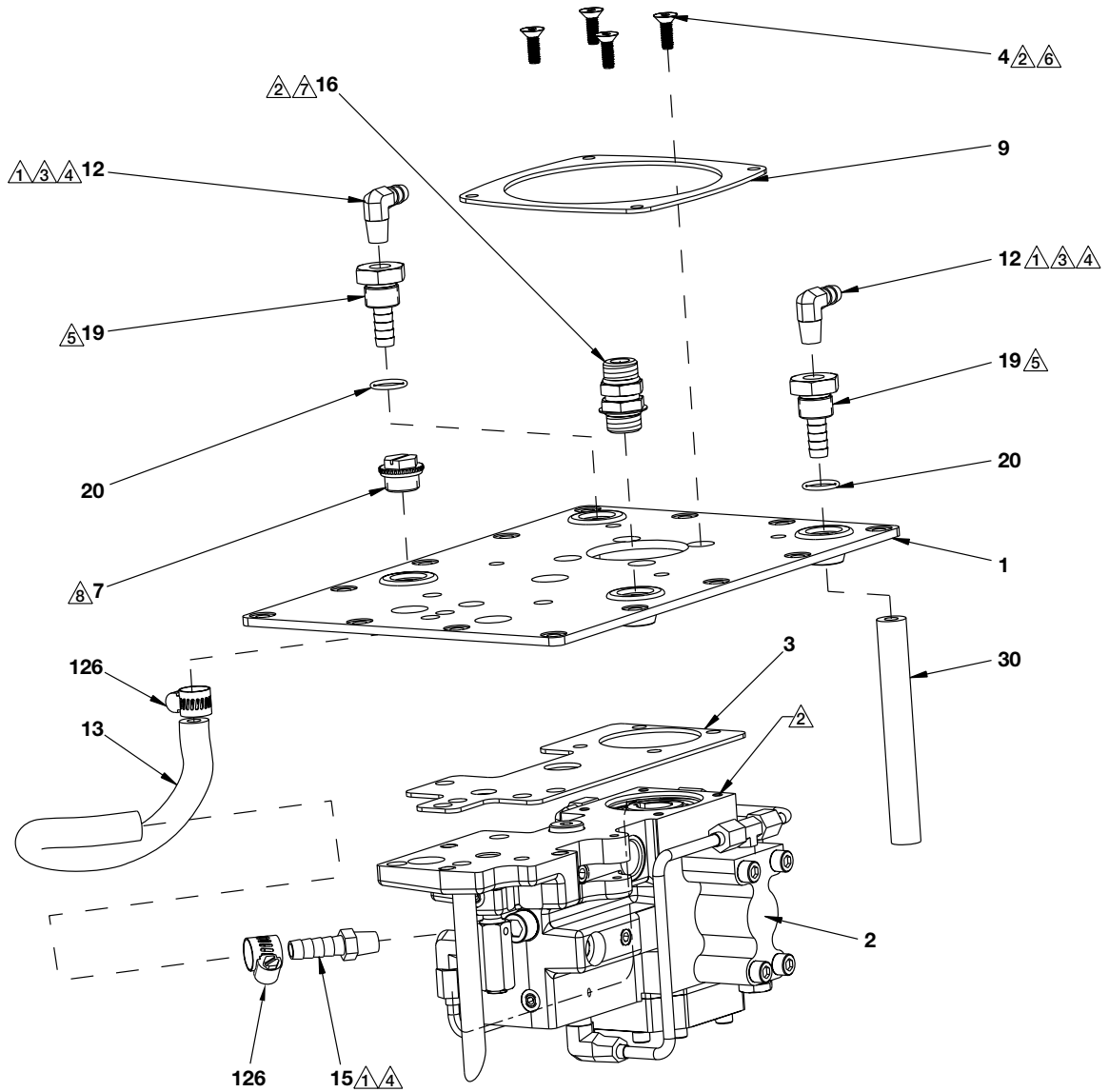


Figure 6, TQM Multi Port Manifold Assembly (optional)

Repair Parts List (Refer to figure 6)							
Item	Part Number	Qty.	Description	Item	Part Number	Qty.	Description
4	❖ A1016245	2	Plug, 1/4" Flush	12	❖ 81907E	2	SHCS, 1/4-20 x 2"
8	❖ 4100067	4	Nipple, 1/4"	57	❖ U962148134-2	4	Coupler, Female
9	❖ DC6793245	1	Plug, Flush, PTF-SAE	58	❖ DC6188020	4	Coupler
10	❖ 45620E	1	Multiport Adapter	61	❖ DC6187234	4	Cap, Dust
11	❖ 45622E	2	Adapter, Valve	62	❖ DC6629020	4	Dust Cap, Metal

❖ Items included in TQM Multiport Kit.



Notes:

- ① Apply Loctite 545 to threads before installation.
- ② Apply Loctite 243 to threads before installation.
- ③ Orient fittings as shown.
- ④ Torque to 15 ft.-lbs. [20.3 Nm] minimum.
- ⑤ Torque to 40 - 45 ft.-lbs. [54.2 - 61.0 Nm]
- ⑥ Torque to 72 - 84 ft.-lbs. [97.6 - 113.8 Nm]
- ⑦ Torque to 15 - 18 ft.-lbs. [20.3 - 24.4 Nm]
- ⑧ Torque to 5 - 7 in.-lbs. [0.56 - 0.79 Nm]

Figure 7, Cover Plate and Pump Element Assembly

Repair Parts List (Refer to figure 7)

Item	Part Number	Qty.	Description	Item	Part Number	Qty.	Description
1	DD2628101	1	Cover Plate	13	DD2645646	1	Hose, Rubber, 16"
2	DD2693900SR	1	Pump Assembly (See Fig. 8)	15	CBE615028-1E	3	BHCS, M6 x 10mm Lo
3	* 46032E	1	Pump Gasket	16	F100096-19	1	Union, SAE #8
4	46279E	4	FHCS, 1/4-28 x 0	19	DC9273097	2	Fitting, Bypass
7	DC9586271	1	Thread Protector	20	* B1908503	2	O-Ring
9	* DD2661037	1	Gasket, Motor	30	DC9418646	1	Hose, Bypass
12	DC3938096	2	Elbow	126	DC9639299	1	Hose Clamp, Steel

* Items included in TQ700K Cover Plate Gasket Kit.

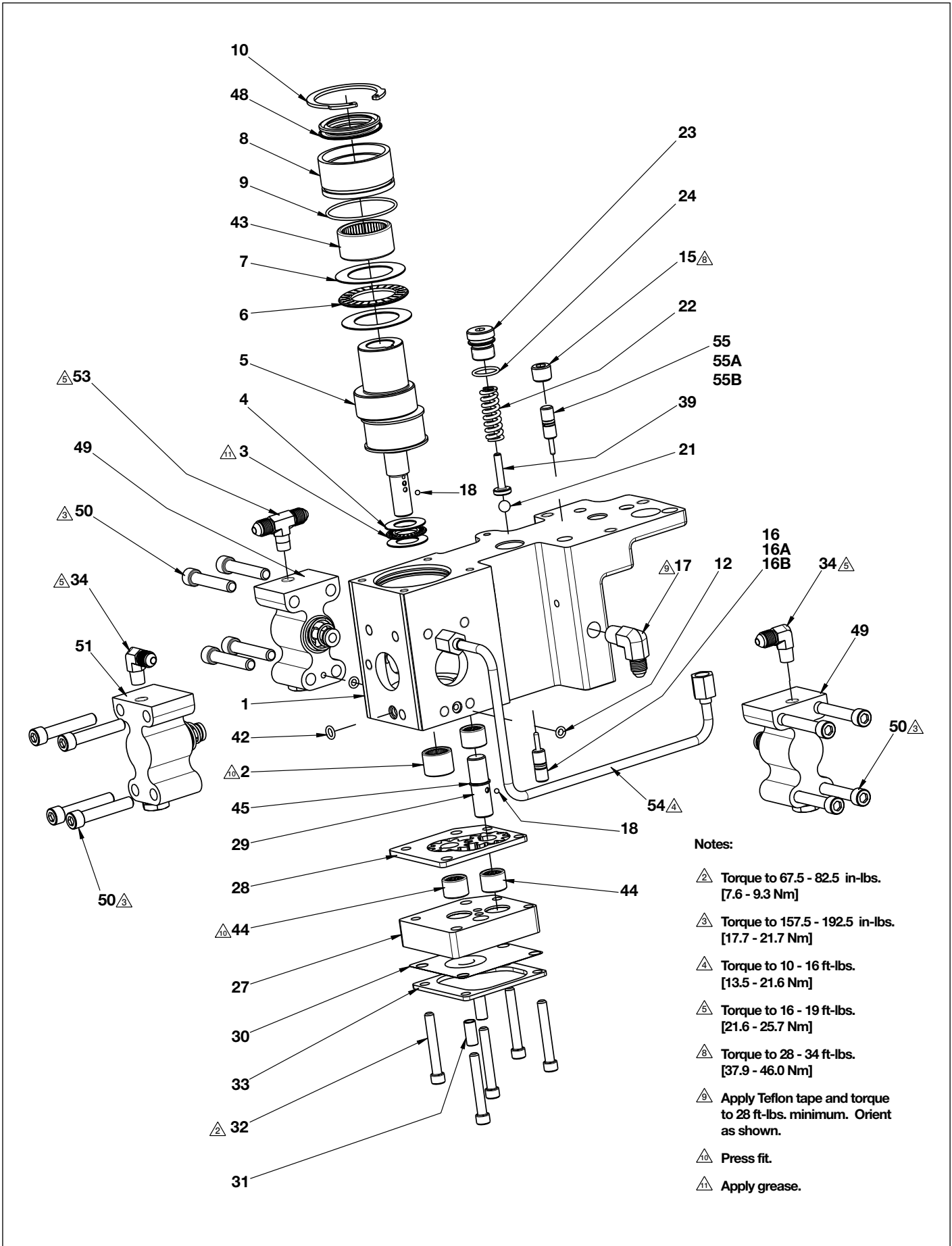
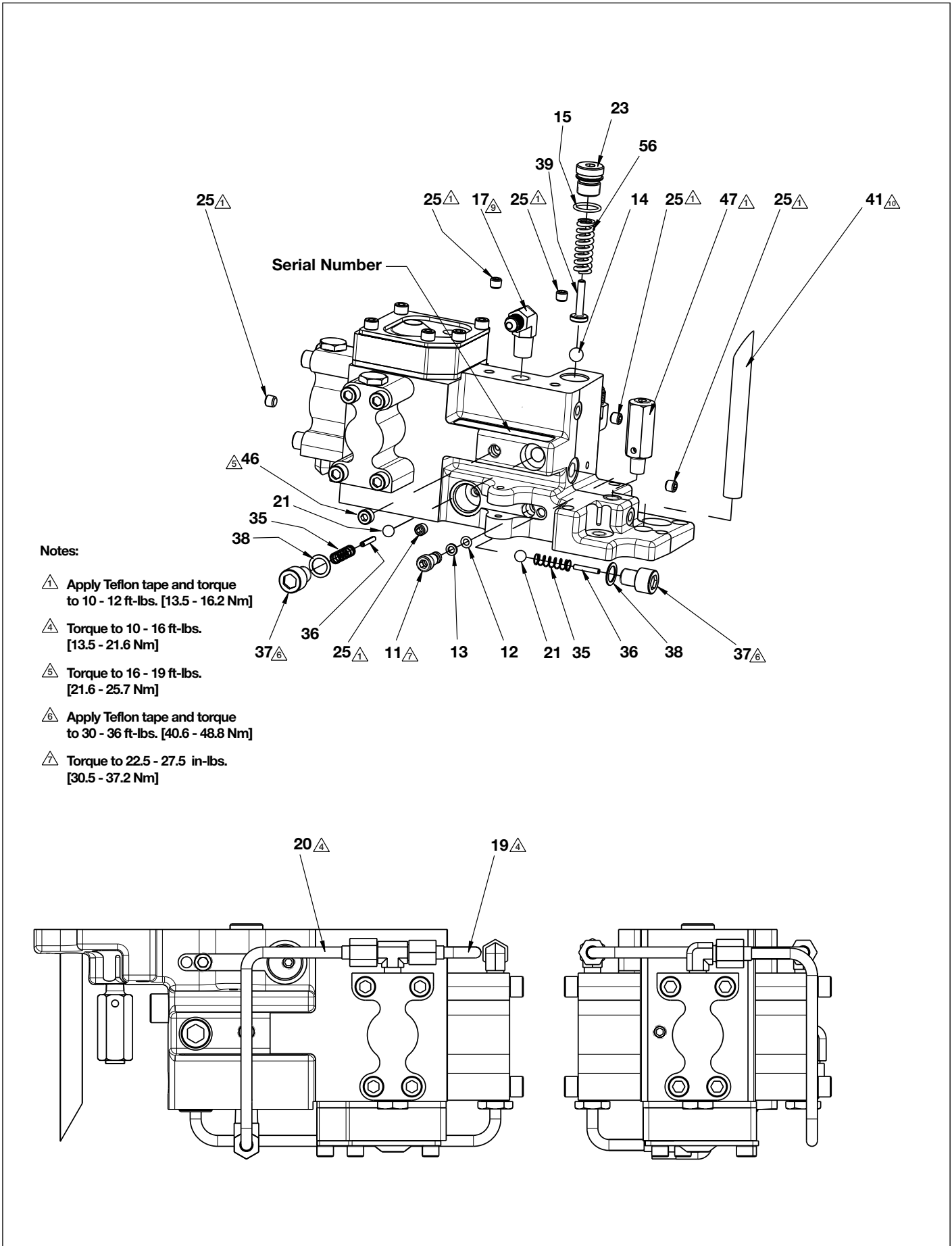


Figure 8A, Pump Element Assembly, DD2693900SR

Repair Parts List (Refer to figures 8A and 8B)

Item	Part Number	Qty.	Description	Item	Part Number	Qty.	Description
1	* 46410E	1	Pump Body	29	◆ 68850E	1	Shaft, Idler
2	✚ 68360E	1	Bearing, Roller	30	◆ 68921E	1	Screen
3	66033E	1	Bearing, Thrust	31	◆ 68894E	2	Tube, Guide .11
4	✚ 66474E	2	Thrust Washer	32	B1016028	5	Screw, Socket Head
5	✚ DD2657900	1	Shaft, Eccentric	33	◆ 68927E	1	Plate, Screen MT
6	✚ 66106E	1	Bearing, Thrust	34	69354E	2	Elbow, Male 1/8"
7	✚ 66108E	2	Thrust Washer	35	68225E	2	Spring
8	✚ 45908E	1	Sleeve, Eccentric Shaft	36	* B1055057	2	Spring Pin
9	★ B1237503	1	O-Ring, 70 Duro	37	* 45904E	2	Ball Stop
10	✚ 68978E	1	Ring, Retaining	38	★★ 86269E	2	Gasket, 29/64"
11	* 43283E	1	Plug, Dump	39	* 43673E	2	Spring Cap
12	★ B1003503	1	O-Ring	41	* 68569E	1	Tube, Return
13	★★ 56080087	1	Washer, Backup	42	★ B1005503	1	O-Ring
14	✚* B1011016	1	Ball, 3/8" Diameter	43	✚ 66030E	1	Roller Bearing
15	* A1008245	1	Flush Plug, 1/4" Diameter	44	◆* 68891E	3	Roller Bearing
16	✚* 43766E	1	Unloading Piston (includes items 16A and 16B)	45	◆ 68892E	1	Ring, Retaining
16A	★ B1004503	1	O-Ring	46	* A1007245	1	Flush Plug, 1/8" Diameter
16B	★ B1009564	1	Washer, Backup	47	66220SR	1	Cartridge, Relief Valve
17	45929E	2	Elbow, Male	48	★✚ 45930E	1	Shaft Seal
18	B1003016	2	Ball, 1/8" Diameter	49	DS1470900SR	2	Piston Block Assy, 3/16"
19	46548E	1	Tube, Piston Block	50	B1356028	12	Capscrew, Socket Head
20	✚ 45815E	1	Outlet Tube	51	45932SR	1	Piston Block Assy, 5/16"
21	✚* B1009016	3	Ball, 5/16" Diameter	53	45426E	1	Tee, Male 1/8"
22	✚* 43671E	1	Spring, Unloading	54	DD2696268	1	Tube, 3-Stage
23	✚* 45903E	2	Screw, Adjusting	55	✚* 46613E	1	Unloading Piston (includes items 55A and 55B)
24	★★ 56020162	2	O-Rings	55A	★ B1004503	1	O-Ring
25	* A1006245	6	Flush Plug, 1/16"	55B	★ B1009564	1	Washer, Backup
27	◆ 45900E	1	Plate, Bottom	56	DD4431110	1	Spring, Unloading
28	◆ 68848E	1	Gear Set, 3/16"				

- * Items included in 46410SR Pump Body Repair Kit.
- ✚ Items included in DD2657900SR Eccentric Assembly Repair Kit.
- ★ Items included in TQRK Pump Seal Kit.
- ◆ Items included in 68848K Gear Pump Repair Kit
- ✚ Items included in 46613K Bypass Repair Kit



Repair Parts List (Refer to figures 8A and 8B)

Item	Part Number	Qty.	Description	Item	Part Number	Qty.	Description
1	* 46410E	1	Pump Body	29	◆ 68850E	1	Shaft, Idler
2	✦ 68360E	1	Bearing, Roller	30	◆ 68921E	1	Screen
3	66033E	1	Bearing, Thrust	31	◆ 68894E	2	Tube, Guide .11
4	✦ 66474E	2	Thrust Washer	32	B1016028	5	Screw, Socket Head
5	✦ DD2657900	1	Shaft, Eccentric	33	◆ 68927E	1	Plate, Screen MT
6	✦ 66106E	1	Bearing, Thrust	34	69354E	2	Elbow, Male 1/8"
7	✦ 66108E	2	Thrust Washer	35	68225E	2	Spring
8	✦ 45908E	1	Sleeve, Eccentric Shaft	36	* B1055057	2	Spring Pin
9	★ B1237503	1	O-Ring, 70 Duro	37	* 45904E	2	Ball Stop
10	✦ 68978E	1	Ring, Retaining	38	★★ 86269E	2	Gasket, 29/64"
11	* 43283E	1	Plug, Dump	39	* 43673E	2	Spring Cap
12	★ B1003503	1	O-Ring	41	* 68569E	1	Tube, Return
13	★★ 56080087	1	Washer, Backup	42	★ B1005503	1	O-Ring
14	✦ B1011016	1	Ball, 3/8" Diameter	43	✦ 66030E	1	Roller Bearing
15	* A1008245	1	Flush Plug, 1/4" Diameter	44	◆* 68891E	3	Roller Bearing
16	✦ 43766E	1	Unloading Piston (includes items 16A and 16B)	45	◆ 68892E	1	Ring, Retaining
16A	★ B1004503	1	O-Ring	46	* A1007245	1	Flush Plug, 1/8" Diameter
16B	★ B1009564	1	Washer, Backup	47	66220SR	1	Cartridge, Relief Valve
17	45929E	2	Elbow, Male	48	★✦ 45930E	1	Shaft Seal
18	B1003016	2	Ball, 1/8" Diameter	49	DS1470900SR	2	Piston Block Assy, 3/16"
19	46548E	1	Tube, Piston Block	50	B1356028	12	Capscrew, Socket Head
20	✦ 45815E	1	Outlet Tube	51	45932SR	1	Piston Block Assy, 5/16"
21	✦ B1009016	3	Ball, 5/16" Diameter	53	45426E	1	Tee, Male 1/8"
22	✦ 43671E	1	Spring, Unloading	54	DD2696268	1	Tube, 3-Stage
23	✦ 45903E	2	Screw, Adjusting	55	✦ 46613E	1	Unloading Piston (includes items 55A and 55B)
24	★★ 56020162	2	O-Rings	55A	★ B1004503	1	O-Ring
25	* A1006245	6	Flush Plug, 1/16"	55B	★ B1009564	1	Washer, Backup
27	◆ 45900E	1	Plate, Bottom	56	DD4431110	1	Spring, Unloading
28	◆ 68848E	1	Gear Set, 3/16"				

- * Items included in 46410SR Pump Body Repair Kit.
- ✦ Items included in DD2657900SR Eccentric Assembly Repair Kit.
- ★ Items included in TQRK Pump Seal Kit.
- ◆ Items included in 68848K Gear Pump Repair Kit
- ✦ Items included in 46613K Bypass Repair Kit

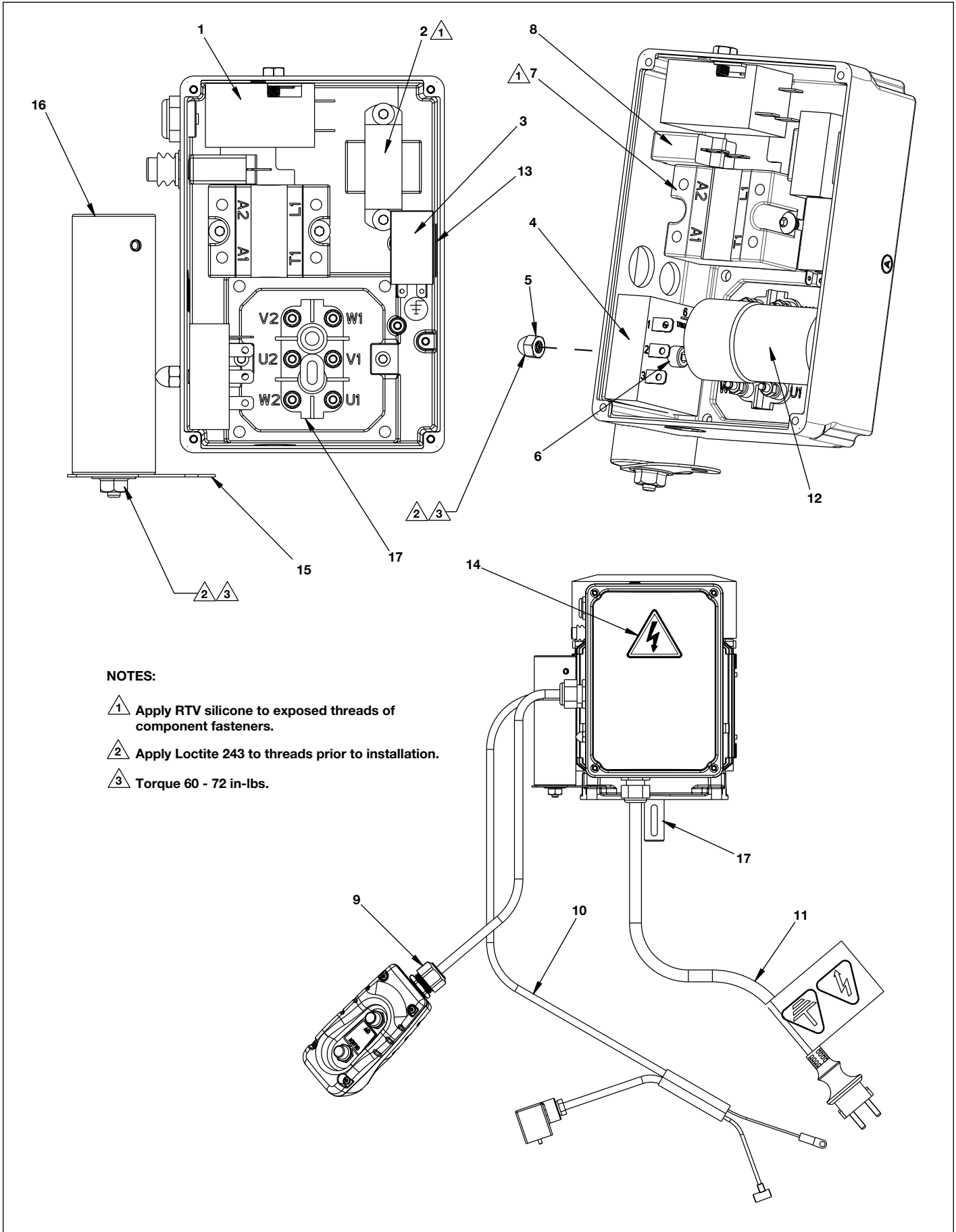


Figure 9, Electrical Box and Motor Assembly, 230V 50/60Hz

Repair Parts List (Refer to figure 9)

Item	Part Number	Qty.	Description	Item	Part Number	Qty.	Description
1	◆* DD2678380	1	Relay, Current Operated	10	◆* DD2623960	1	Wire Harness Sol and Fan
2	◆* DD2624480	1	Transformer	11	◆ DD2621960	1	Power Cord, 230V 50Hz
3	◆* DD2681380	1	Relay		* DD2620960	1	Power Cord, 230V 60Hz
4	◆* DC8281784	1	Timer, SSAC, 15 Seconds	12	◆* DD2676380	1	Capacitor, starting
5	◆* CAE1060055-1A	1	Nut	13	◆* - - - -	1	Velcro (for relay)
6	◆* CBE623028-1A	1	SHCS, M6 x 25, Zinc	14	◆* DC9922026	1	Decal, High Voltage
7	◆* DD2211980	1	SSR, AC Fired, 24VAC	15	◆* DD2634111	1	Bracket, Capacitor Mount
8	◆ DD2721380	1	Circuit Breaker, 7A (50 Hz)	16	◆* DD2674380	1	Running Capacitor, 230V
	* DD2788380	1	Circuit Breaker, 8A (60 Hz)	17	◆* DD2636259	1	Motor, 1 HP
9	◆* (See Fig. 10)	1	Pendant and Cable Assy.				

◆ Items included with DD2665900SR Motor and Electrical Assembly Kit (230V 50Hz).

* Items included with DD2667900SR Motor and Electrical Assembly Kit (230V 60Hz).

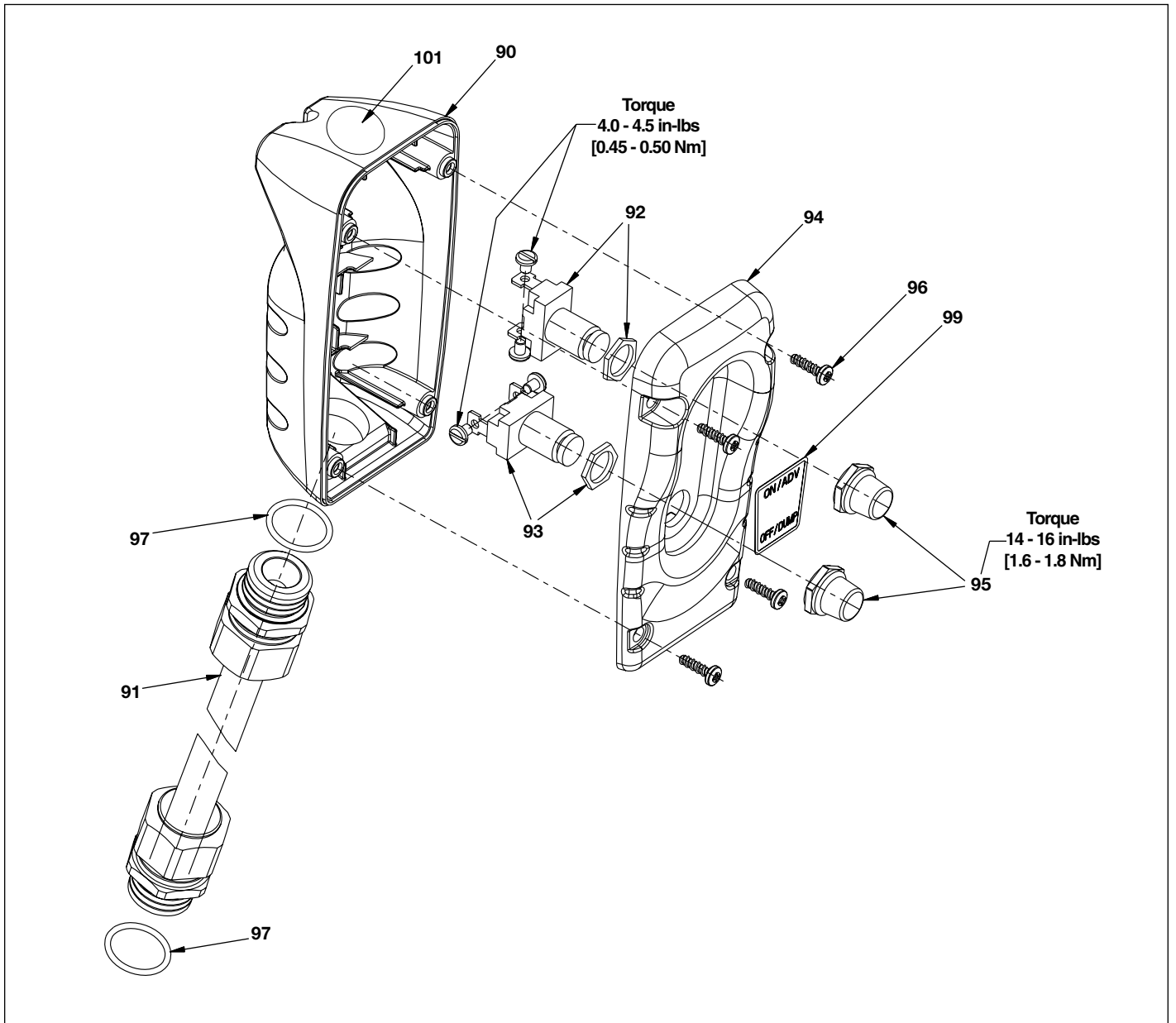


Figure 10, Pendant Assembly, 2-Button

Repair Parts List for Figure 10

Item	Part Number	Qty.	Description	Item	Part Number	Qty.	Description
90	◆ DC9425424	1	Enclosure, Lower	95	◆ DC8284379	2	Switch Cover
91	◆ DD1276960	1	Pendant Wire, BTW	96	◆ DC9428008	4	Screw, Hi-Low #8 x 1/2
92	◆ DC8282379	1	Pendant Button, NO	97	◆ B1223503	2	O-Ring
93	◆ DC8283379	1	Pendant Button, NC	99	◆ DC8127026	1	Decal, Pendant
94	◆ DC8122424	1	Enclosure, Upper	101	◆ DD1394026	1	Decal, Pressure Relief

◆ Items included in Pendant Kit DD1275900SR

Enerpac Worldwide Locations

◆ e-mail: info@enerpac.com

◆ internet: www.enerpac.com

Australia and New Zealand

Actuant Australia Ltd.
Block V Unit 3
Regents Park Estate
391 Park Road
Regents Park NSW 2143
(P.O. Box 261) Australia
T +61 (0)2 9743 8988
F +61 (0)2 9743 8648
sales-au@enerpac.com

Brazil

Power Packer do Brasil Ltda.
Rua Luiz Lawrie Reid, 548
09930-760 - Diadema (SP)
T +55 11 5687 2211
F +55 11 5686 5583
Toll Free: 0800 891 5770
vendasbrasil@enerpac.com

Canada

Actuant Canada Corporation
6615 Ordan Drive, Unit 14-15
Mississauga, Ontario L5T 1X2
T +1 905 564 5749
F +1 905 564 0305
Toll Free:
T +1 800 268 4987
F +1 800 461 2456
customer.service@actuant.com

China

Actuant (China) Industries Co. Ltd.
No. 6 Nanjing East Road,
Taicang Economic Dep Zone
Jiangsu, China
T +86 0512 5328 7500
F +86 0512 5335 9690
Toll Free: +86 400 885 0369
sales-cn@enerpac.com

France, Switzerland, North Africa and French speaking African countries

ENERPAC
Une division d'ACTUANT France S.A.
ZA de Courtaboeuf
32, avenue de la Baltique
91140 VILLEBON /YVETTE
France
T +33 1 60 13 68 68
F +33 1 69 20 37 50
sales-fr@enerpac.com

Germany and Austria

ENERPAC GmbH
P.O. Box 300113
D-40401 Düsseldorf
Willstätterstrasse 13
D-40549 Düsseldorf, Germany
T +49 211 471 490
F +49 211 471 49 28
sales-de@enerpac.com

India

ENERPAC Hydraulics Pvt. Ltd.
No. 1A, Peenya Industrial Area
IInd Phase, Bangalore, 560 058, India
T +91 80 40 792 777
F +91 80 40 792 792
sales-in@enerpac.com

Italy

ENERPAC S.p.A.
Via Canova 4
20094 Corsico (Milano)
T +39 02 4861 111
F +39 02 4860 1288
sales-it@enerpac.com

Japan

Applied Power Japan LTD KK
Besshocho 85-7
Kita-ku, Saitama-shi 331-0821, Japan
T +81 48 662 4911
F +81 48 662 4955
sales-jp@enerpac.com

Middle East, Egypt and Libya

ENERPAC Middle East FZE
Office 423, LOB 15
P.O. Box 18004, Jebel Ali, Dubai
United Arab Emirates
T +971 (0)4 8872686
F +971 (0)4 8872687
sales-ua@enerpac.com

Russia

Rep. office Enerpac
Russian Federation
Admirala Makarova Street 8
125212 Moscow, Russia
T +7 495 98090 91
F +7 495 98090 92
sales-ru@enerpac.com

Southeast Asia, Hong Kong and Taiwan

Actuant Asia Pte Ltd.
83 Joo Koon Circle
Singapore 629109
T +65 68 63 0611
F +65 64 84 5669
Toll Free: +1800 363 7722
sales-sg@enerpac.com

South Korea

Actuant Korea Ltd.
3Ba 717, Shihwa Industrial Complex
Jungwang-Dong, Shihung-Shi,
Kyunggi-Do
Republic of Korea 429-450
T +82 31 434 4506
F +82 31 434 4507
sales-kr@enerpac.com

Spain and Portugal

ENERPAC SPAIN, S.L.
Avda. Los Frailes, 40 – Nave C & D
Pol. Ind. Los Frailes
28814 Daganzo de Arriba
(Madrid) Spain
T +34 91 884 86 06
F +34 91 884 86 11
sales-es@enerpac.com

Sweden, Denmark, Norway, Finland and Iceland

Enerpac Scandinavia AB
Fabriksgatan 7
412 50 Gothenburg
Sweden
T +46 (0) 31 799 0281
F +46 (0) 31 799 0010
scandinavianinquiries@enerpac.com

The Netherlands, Belgium, Luxembourg, Central and Eastern Europe, Baltic States, Greece, Turkey and CIS countries

ENERPAC B.V.
Galvanistraat 115
6716 AE Ede
P.O. Box 8097
6710 AB Ede
The Netherlands
T +31 318 535 911
F +31 318 535 848
sales-nl@enerpac.com

Enerpac Integrated Solutions B.V.

Opaalstraat 44
7554 TS Hengelo
P.O. Box 421
7550 AK Hengelo
The Netherlands
T +31 74 242 20 45
F +31 74 243 03 38
integratedsolutions@enerpac.com

South Africa and other English speaking African countries

Enerpac Africa Pty Ltd.
No. 5 Bauhinia Avenue
Cambridge Office Park
Block E
Highveld Techno Park
Centurion 0157
South Africa
T: +27 12 940 0656

United Kingdom and Ireland

ENERPAC Ltd.,
Bentley Road South
Darlaston, West Midlands
WS10 8LQ
England
T +44 (0)121 50 50 787
F +44 (0)121 50 50 799
sales-uk@enerpac.com

USA, Latin America and Caribbean

ENERPAC
P.O. Box 3241
Milwaukee WI 53201 USA
T +1 262 293 1600
F +1 262 293 7036
User inquiries:
T +1 800 433 2766
Distributor inquiries/orders:
T +1 800 558 0530
F +1 800 628 0490
Technical inquiries:
techservices@enerpac.com
sales-us@enerpac.com

All Enerpac products are guaranteed
against defects in workmanship and
materials for as long as you own them.

For the location of your nearest authorized
Enerpac Service Center, visit us at
www.enerpac.com

012313