


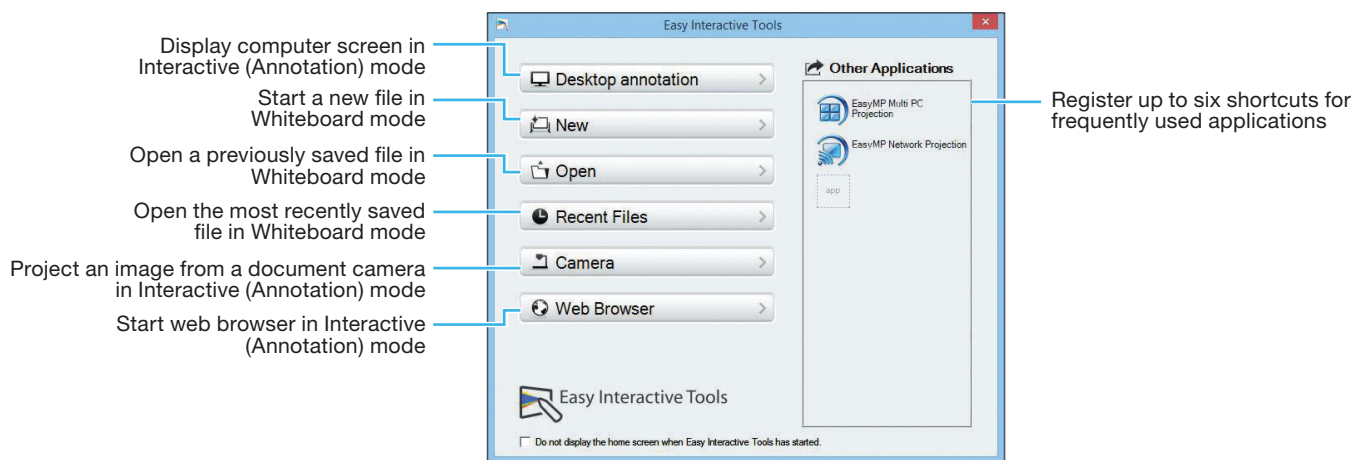


## Starting Easy Interactive Tools

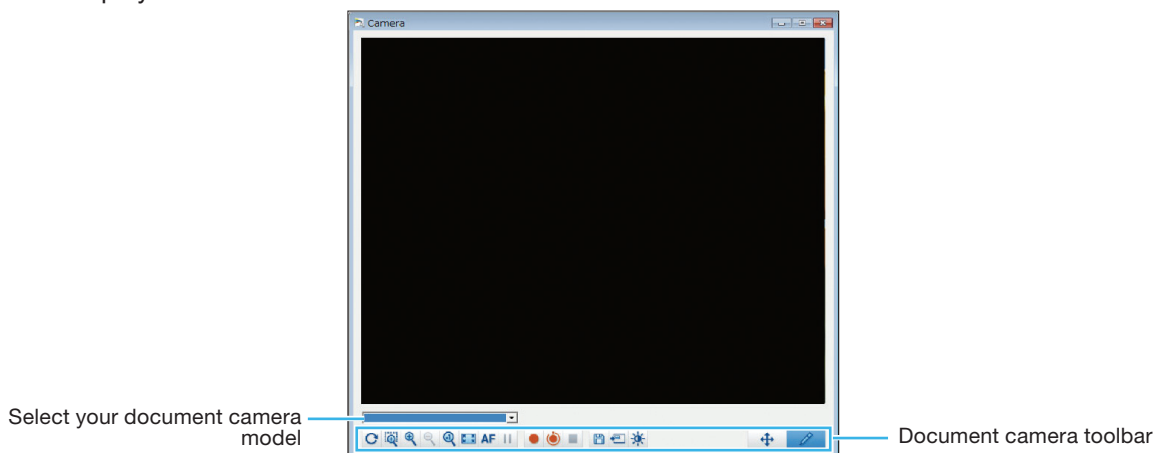
To start Easy Interactive Tools on your computer, do one of the following:





- **Windows:** Double-click the  Easy Interactive Tools icon on your desktop or do one of the following:
  - **Windows Vista®/Windows® 7:** Click  or **Start > All Programs or Programs > EPSON Projector > Easy Interactive Tools Ver.X.XX.**
  - **Windows 8/Windows 8.1:** Navigate to the **Apps** screen and select **Easy Interactive Tools Ver.X.XX.**
  - **Windows 10:** Click  > **All Apps > Easy Interactive Tools Ver.X.XX.**
- **OS X:** From the Applications folder, double-click **Easy Interactive Tools Ver.X.XX.**

The Command and Drawing toolbars and the Easy Interactive Tools Home screen appear.



If you are using a document camera, click the  **Camera** button. The Camera screen with document camera toolbar is displayed.



You can hide the toolbars by selecting the  Close icon on the Drawing toolbar, then select one of the   arrows (on the sides of the screen) to redisplay the toolbars. To exit Easy Interactive Tools, select the  exit icon in the upper right corner of the Command toolbar.

## Using the Toolbars

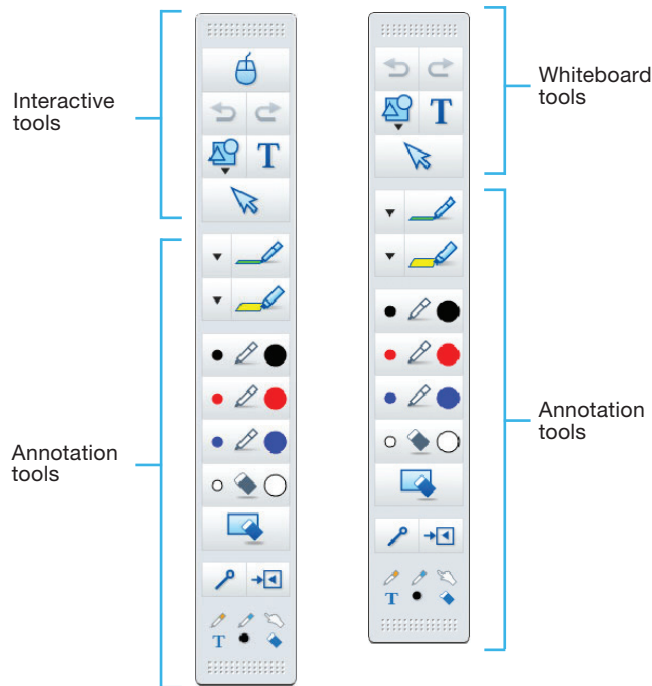
A Drawing toolbar and a Command toolbar are available. (If you are using a document camera, a toolbar is available on the Camera screen as well.)

### Drawing Toolbar

Select drawing functions from the Drawing toolbar in each mode.

#### Interactive (Annotation) Mode

In Interactive (Annotation) mode, the Drawing toolbar appears on the projected image. You can use the interactive pen or your finger (if applicable) as a mouse to perform interactive functions from your desktop, such as opening applications, accessing links, and operating scroll bars.



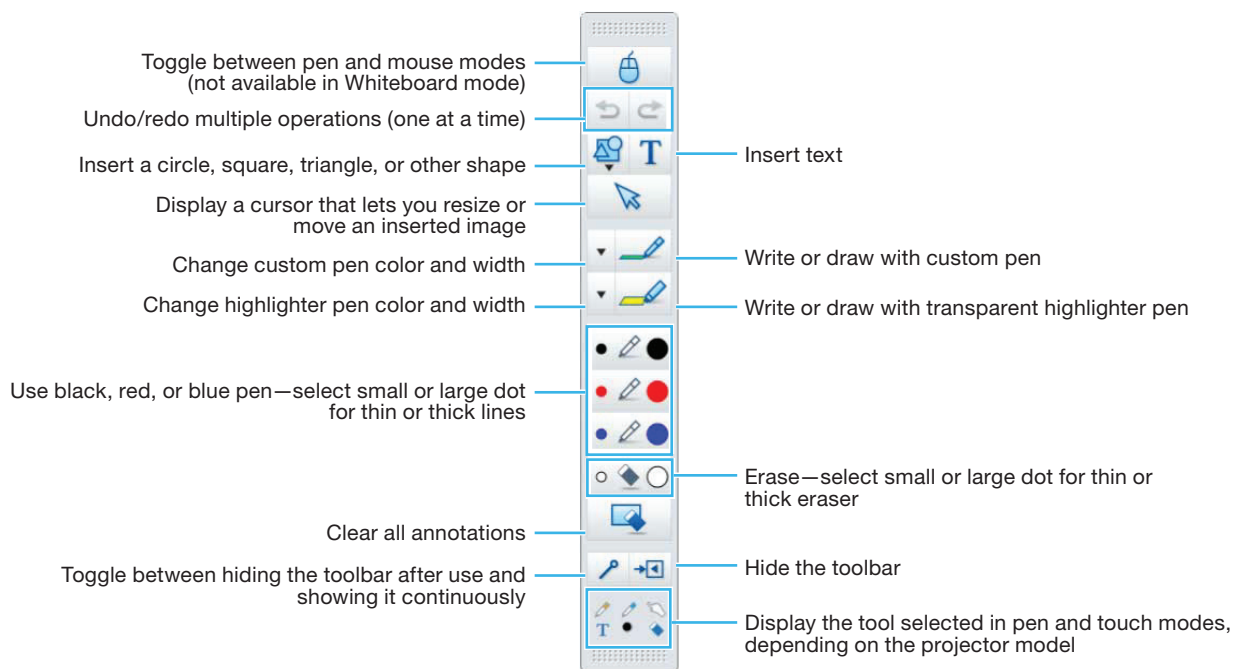
Interactive toolbar Whiteboard toolbar

#### Whiteboard Mode



In Whiteboard mode, the Drawing toolbar appears on a blank surface, background image, or pattern. You can write or draw with the interactive pen or your finger (if applicable), import images, and save or print your pages.

You cannot perform interactive functions from your desktop in this mode.

The Drawing toolbar allows you to select the thickness and color of the pen lines, and add graphics or text to the drawing area.

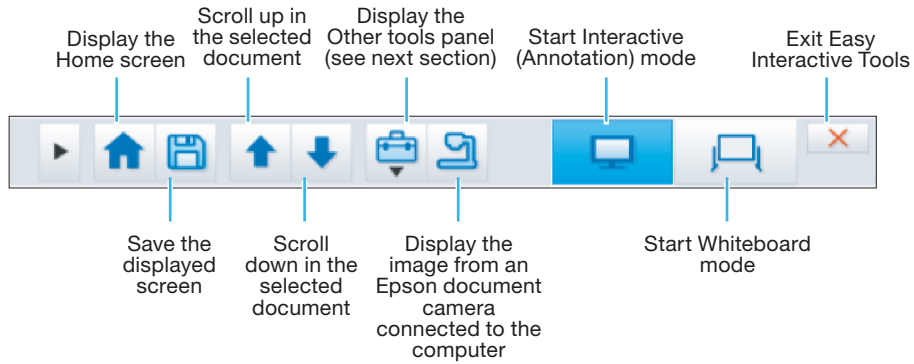



## Command Toolbar

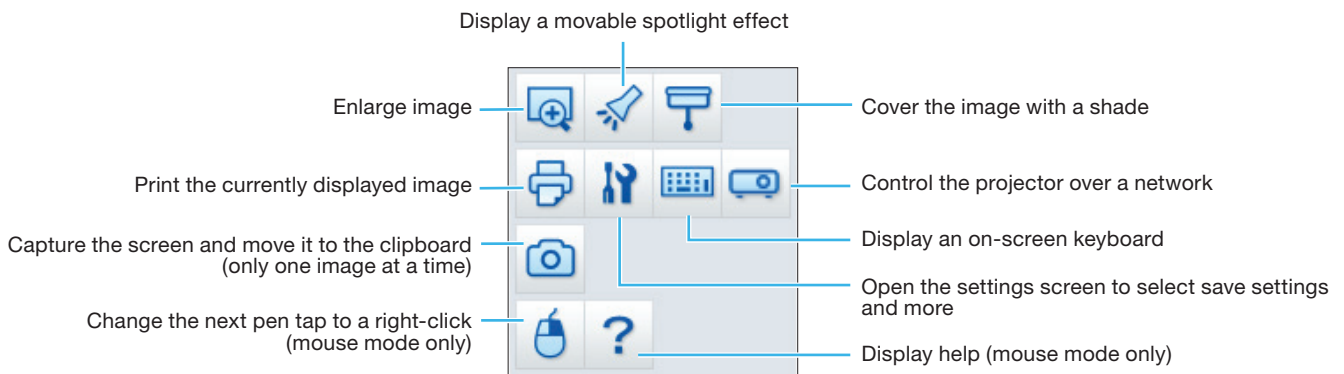
The Command toolbar allows you to change the mode, save files, control connected devices, and select additional settings. To toggle between Interactive (Annotation) and Whiteboard modes, select the  Annotation mode icon on the Command toolbar to display the interactive (annotation) toolbar, or the  Whiteboard mode icon to display the whiteboard toolbar.

### Interactive (Annotation) Mode

The following functions are available in Interactive (Annotation) mode.

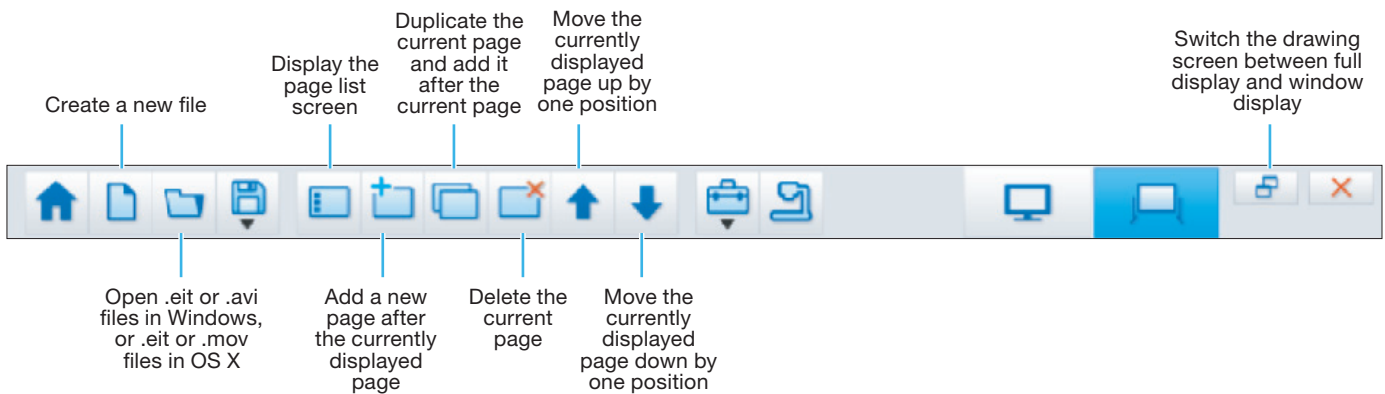



To display the tools shown below, select the  Other tools icon.

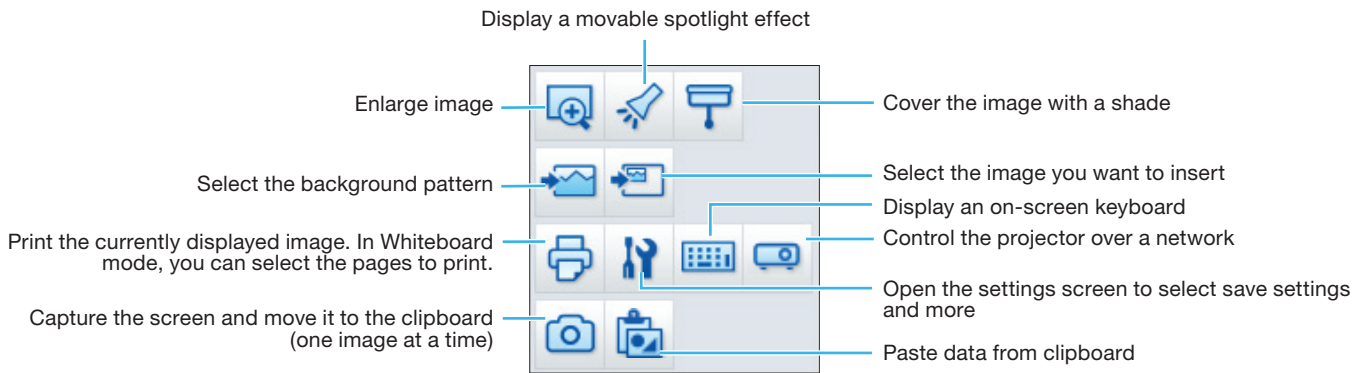


### Whiteboard Mode



In Whiteboard mode, the following functions are available, in addition to those described above.

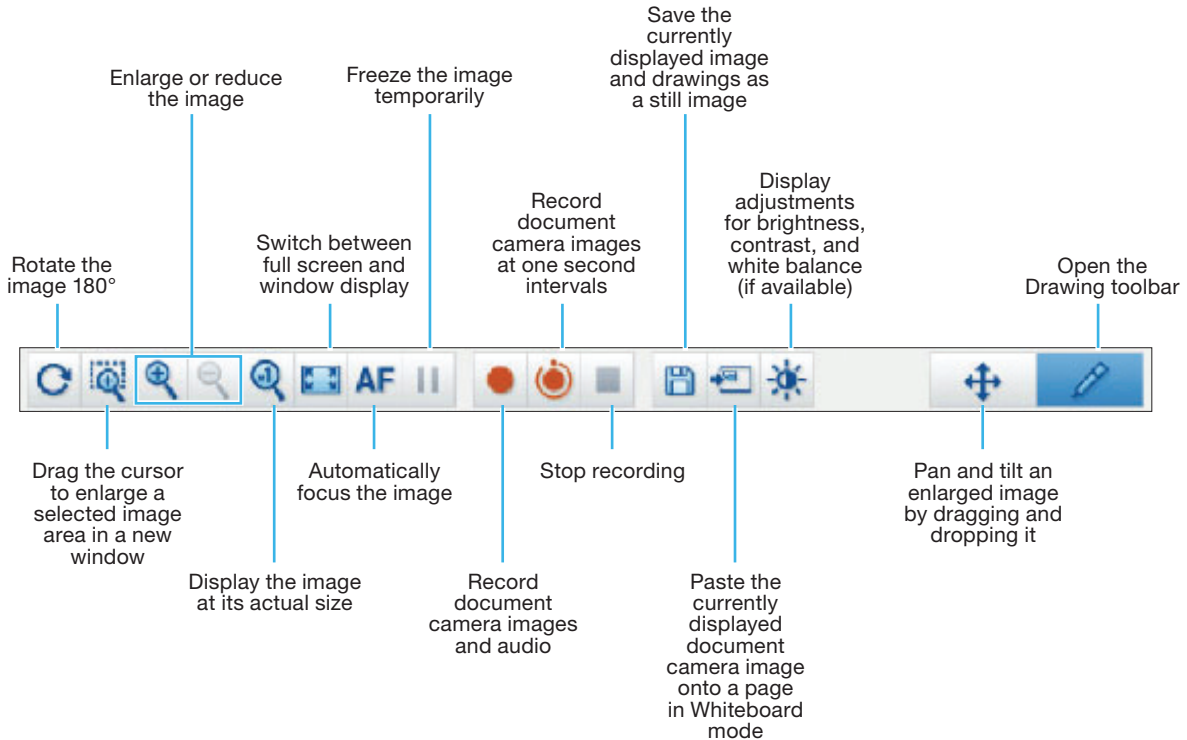


To display the tools shown below, select the  Other tools icon.






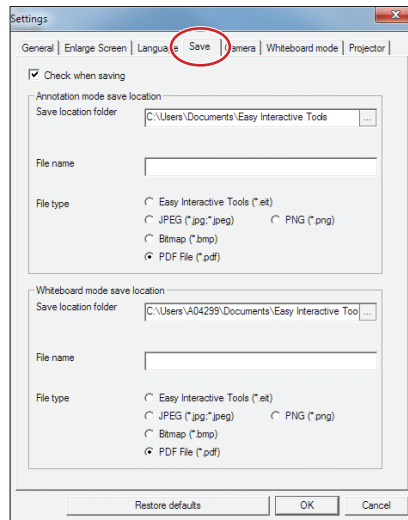
## Document Camera Toolbar

When you select the  Camera icon on the Command toolbar or the  **Camera** button on the Easy Interactive Tools Home screen, the Camera screen and document camera toolbar are displayed. The following functions are available on the document camera toolbar.

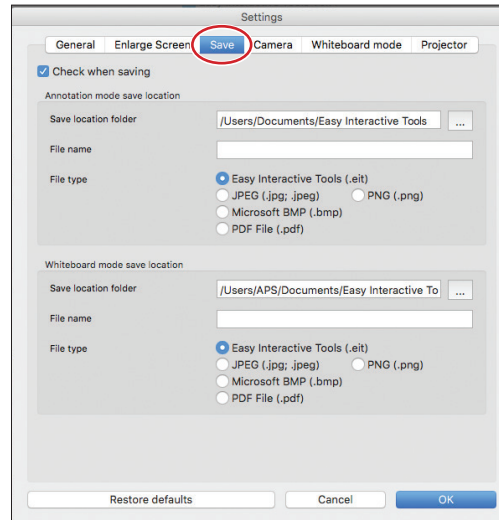


## Saving Your Files

- To save your screen or pages as .pdf files in your Documents > Easy Interactive Tools folder, simply select the  Save tool icon on the Command or document camera toolbar. Easy Interactive Tools names your file automatically.
- To select other locations and formats for saving, follow these steps:
  - 1 Select the  Other tools icon on the Command toolbar, select the  Settings tool icon, then select the **Save** tab as shown below.



Windows



OS X

- 2 Select the location, file name, and file type. You can save all your screens and pages as one PDF file.  
**Note:** If you plan to edit a file more than once, save it as an .eit file.
- 3 If you want to select different settings each time you save, select the **Check when saving** checkbox.
- 4 Select **OK** to close the Settings window.



205 Westwood Ave, Long Branch, NJ 07740  
Phone: 866-94 BOARDS (26273) / (732)-222-1511  
Fax: (732)-222-7088 | E-mail: sales@touchboards.com

EPSON is a registered trademark and EPSON Exceed Your Vision is a registered logomark of Seiko Epson Corporation.

OS X is a trademark of Apple Inc., registered in the U.S. and other countries.

General Notice: Other product names are for identification purposes only and may be trademarks of their respective owners. Epson disclaims any and all rights in those marks.

This information is subject to change without notice.

© 2016 Epson America, Inc., 5/16

CPD-40861R1