

PowerLite[®] Ultra-short-throw 3LCD Projectors

570

XGA Resolution

575W

WXGA Resolution

580

XGA Resolution
Ultra Bright

585W

WXGA Resolution
Ultra Bright



PowerLite 585W shown

Ultra-short-throw projectors with connectivity for the BYOD classroom.

3x Brighter Colors¹, and reliable performance — 3LCD, 3-chip technology

One measurement of brightness is not enough — look for both high color brightness and high white brightness. The PowerLite 570, 575W, 580 and 585W have:

Color Brightness — 2700 to 3300 lumens²

White Brightness — 2700 to 3300 lumens²

Amazing image quality — available in native XGA and WXGA (widescreen) resolutions

The ideal wall-mount installation — get a 93" (XGA) or 100" (WXGA) image from as little as 12" away; significantly reduces shadow interference and glare

Convenient collaboration for BYOD classrooms — wirelessly share and compare students' work from multiple devices, simultaneously, with Moderator software³

Manage your projector and present remotely — easy network connectivity; software included

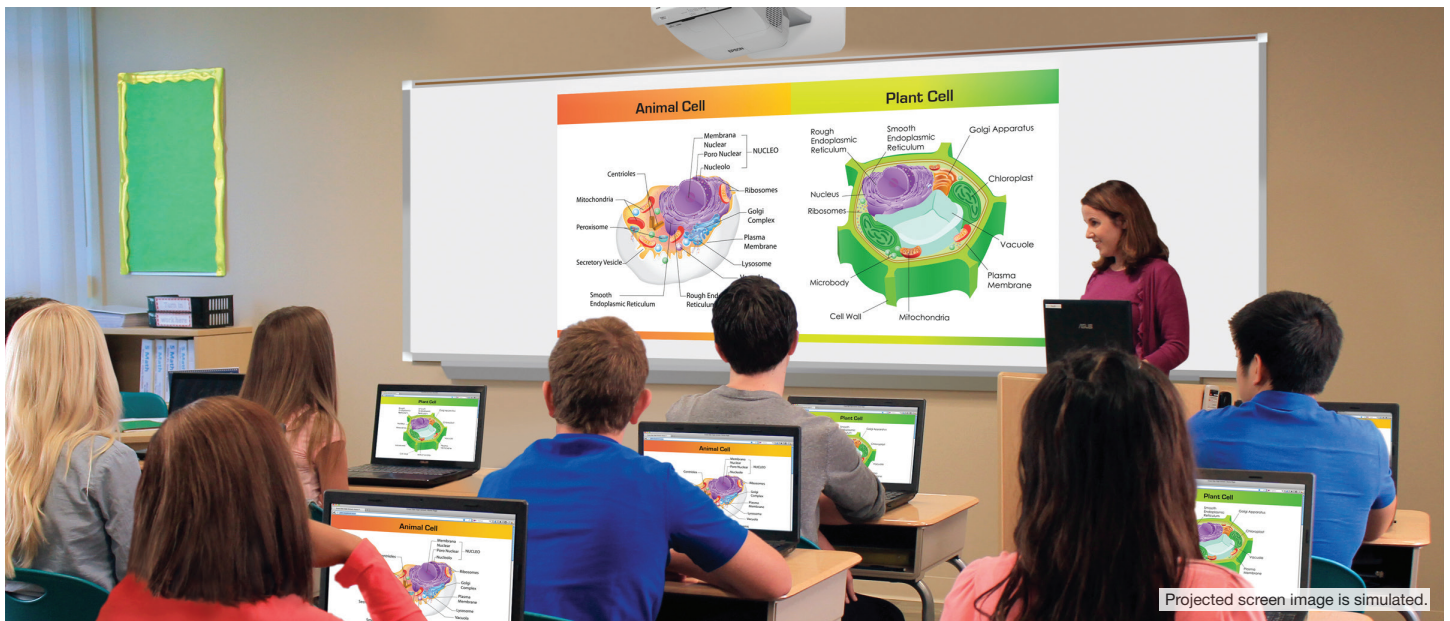
Wireless projection — supports iPhone[®], iPad[®] and Android[™] mobile devices with the Epson iProjection[™] App⁴

2x HDMI[™] — supports multiple high-definition A/V devices, with MHL[®] support⁵

Powerful sound to engage every student — built-in 16 W speaker and microphone input; or, use external speakers, even in Standby Mode

Long-life, low-cost lamp — lasts up to 10,000 hours (570/575W) in ECO Mode⁶





Ultra-short-throw projectors with connectivity for the BYOD classroom.

The perfect ultra-short-throw projectors for today's BYOD classroom, the PowerLite 570, 575W, 580 and 585W deliver a whole new level of collaborative learning. With brilliant image quality, plus advanced network connectivity and wireless performance, these projectors make it easy to share engaging lessons and control the projector remotely. Offering 3x Brighter Colors¹ than competitive models, Epson 3LCD projectors ensure bright, vivid lessons. Available in both XGA and larger-than-life WXGA resolutions, these projectors deliver dynamic images that are sure to captivate any classroom. They can project 93" (XGA) or 100" (WXGA) images from just 12" away. And, they feature Moderator software³, so you can easily share and compare students' work from multiple devices, simultaneously.

Projectors at a glance



	PowerLite 570	PowerLite 575W	PowerLite 580	PowerLite 585W
Resolution:	XGA (1024 x 768)	WXGA (1280 x 800)	XGA (1024 x 768)	WXGA (1280 x 800)
Color Brightness:	2700 lumens²	2700 lumens²	3200 lumens²	3300 lumens²
White Brightness:	2700 lumens²	2700 lumens²	3200 lumens²	3300 lumens²

Amazing image quality



PowerLite 570 / 575W



PowerLite 580

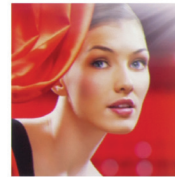


PowerLite 585W

3x Brighter Colors with Epson¹

Brilliant image quality requires high color brightness (color light output), and Epson 3LCD projectors have 3x Brighter Colors than leading competitive projectors.¹

One brightness measurement (lumens) is not enough. A projector's specification needs to show both high color brightness and high white brightness. If color brightness is lower than white brightness, images may be dark, dull and lose detail. If not provided, be sure to ask for a projector's color brightness specification.



EPSON

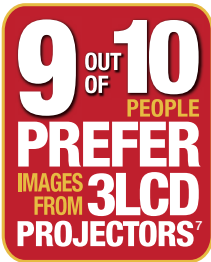
High color brightness and high white brightness



COMPETITOR

Color brightness significantly lower than white brightness

Actual photographs of projected images from an identical signal source. Price, resolution and white brightness are similar for both projectors (Epson 3LCD and 1-chip DLP competitor). Both projectors are set to their brightest mode.



3LCD — The #1 projection technology in the world

- All 3LCD projectors have both high color brightness and high white brightness
- All 3LCD projectors have 3 chips
- 25% lower power consumption for lower energy costs⁸
- 20 years of road-tested reliability



Remarkable resolution for brilliant clarity and detail

Resolution defines the level of detail and depth you'll see in a projected image. It's measured as the number of pixels wide by the number of pixels high. The more pixels, the better the detail.

1.5x more resolution than SVGA



SVGA (800 x 600)

Meets basic projection needs



XGA (1024 x 768)

Ensures sharper detail

2x more resolution than SVGA



WXGA (1280 x 800)

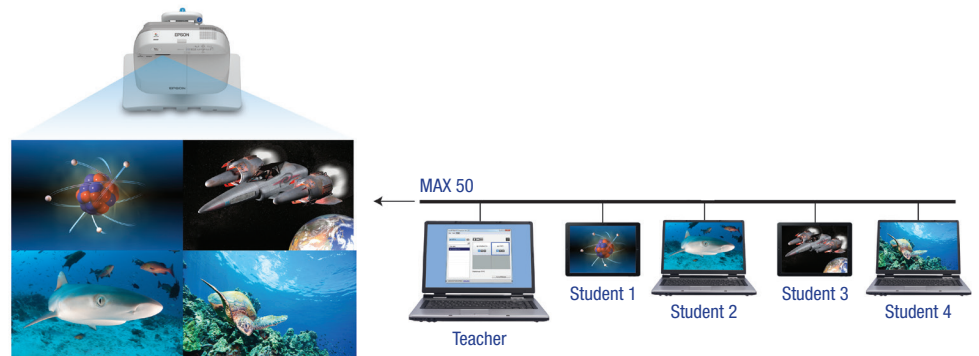
Offers high-definition and is ideal for widescreen (16:10) displays

Classroom collaboration

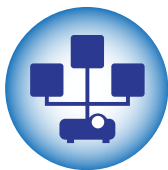
Teaching tools

Support BYOD classroom collaboration using Epson's Moderator feature³.

- Moderator (teacher) can display up to four different device screens simultaneously and control which device screens to display
- Connect to up to 50 Windows®, Mac®, iOS® or Android devices
- Encourage and control classroom collaboration; perfect for comparing students' work side-by-side



Advanced connectivity



EasyMP
network
projection



Free
Epson iProjection App

Networking features that take teaching to the next level

- Manage up to 1024 Epson networked projectors using the included EasyMP® Monitor software or Crestron RoomView® — saves time and money
- Update projector firmware in-house via the network, a USB cable or a USB flashdrive — eliminates the need for external service center repairs; saves time and money
- Send updates or announcements remotely to up to 1024 Epson networked projectors using the Message Broadcasting⁹ plug-in for EasyMP Monitor
- Connect your projector to an access point to share it with the entire class, without running more cables

Share from your tablet or smartphone

Display from your iOS or Android mobile device with the free Epson iProjection App and any nearby Epson projector.⁴

- Control your presentation with just a touch of the screen
- Advance through PowerPoint® or Keynote® presentations
- Zoom in and out of PDF, Excel® and Word documents
- Project Web pages and view brilliant, high-quality images

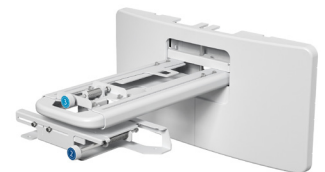
Easy to use



Simple Setup Suite from Epson

Epson projectors offer a suite of innovative features that ensure flexible placement and fast, easy setup.

- **2x HDMI** — supports multiple high-definition A/V devices. Compatible with the latest laptops, Blu-ray Disc® and media players
- **MHL** — the latest in connectivity⁵
 - Display content from your MHL-enabled smartphones, tablets and streaming devices
 - Use the projector remote to control MHL-enabled devices
 - Charge your MHL-enabled device when it's plugged into the projector
 - Offers instant access to movies, games and more
- **Quick Corner®** — this innovative feature allows you to move any of the four corners of an image independently, to adjust each corner for a perfectly rectangular picture
- **Advanced 3-in-1 USB Plug 'n Play instant setup** — instantly project audio and video from a PC or Mac via a USB connection
- **Quick, convenient control** — Instant Off® means no cool-down time required; it's ready to shut down when you are
- **Copy menu settings for multiple projector installations** — save on installation time; copy settings via a USB flash drive, USB cable or LAN
- **Flexible wall mount (included)** — easily install the projector with convenient adjustments, color-coded dials and on-screen prompts. Wide cut-outs facilitate cable management



Easily conserve power

- **ECO Mode** — operates the projector in a lower brightness setting
- **Light Optimizer Mode** — adjusts the lamp brightness, based on the projected image
- **Auto Mode** — sensor automatically adjusts the lamp brightness, based on the room environment
- **Sleep Mode (A/V Mute)** — control your presentation; it's right at your fingertips
- **Direct Power On/Off** — power the projector on/off with the flip of a wall switch
- **Standby audio** — even when the projector is in Standby Mode, you can use the projector's internal speaker or pass audio out to an external speaker

1 Compared to leading 1-chip DLP business and education projectors based on NPD data, July 2011 through June 2012. Color brightness (color light output) measured in accordance with IDMS 15.4. Color brightness will vary depending on usage conditions.

2 Color brightness (color light output) and white brightness (white light output) will vary depending on usage conditions. Color light output measured in accordance with IDMS 15.4; white light output measured in accordance with ISO 21118.

3 Moderator feature is part of EasyMP Multi-PC Projection software.

4 Check your owner's manual to determine if a wireless LAN module must be purchased separately to enable wireless connection on your Epson projector. Epson projectors can be networked either through the Ethernet port on the projector (check model specifications for availability) or via a wireless connection. Not all Epson projectors are able to be networked. Availability varies depending on model.

5 Includes one Mobile High-Definition Link® (MHL) HDMI port.

6 PowerLite 570/575W: ECO Mode is up to 10,000 hours. Normal Mode is up to 5000 hours. PowerLite 580/585W: ECO Mode is up to 6000 hours, Normal Mode is up to 4000 hours. Lamp life will vary depending upon mode selected, environmental conditions and usage. Lamp brightness decreases over time.

7 9 out of 10 people preferred images from leading 3LCD projectors over leading 1-chip DLP business and education projectors. Leading projectors selected according to NPD data as of July 2013. Based on independent U.S. research conducted by Radius Research (July 2013).

8 Data source: ProjectorCentral.com Jan. 2013. Average of 1128 shipping models for which the manufacturers provided lumens and total power data, all resolutions and brightness levels. Energy efficiency was measured as wattage per lumen. It was measured for both 3LCD and 1-chip projectors in each of five brightness segments. 3LCD projectors averaged less required electricity per lumen in each of the five segments.

9 Works only with Epson projectors that support presentation over the network capability.

PowerLite® Ultra-short-throw 3LCD Projectors

Specifications

Projection System 3LCD, 3-chip technology
Projection Method Front/rear wall mount
Driving Method Poly-silicon TFT Active Matrix
Pixel Number
 570/580: 786,432 dots (1024 x 768) x 3
 575W/585W: 1,024,000 dots (1280 x 800) x 3
Color Brightness² Color Light Output
 570/575W: 2700 lumens
 580: 3200 lumens
 585W: 3300 lumens
White Brightness² White Light Output
 570/575W: 2700 lumens
 580: 3200 lumens
 585W: 3300 lumens

Aspect Ratio
 570/580: 4:3, 575W/585W: 16:10

Native Resolution
 570/580: 1024 x 768 (XGA)
 575W/585W: 1280 x 800 (WXGA)

Resize
 640 x 580 (VGA), 800 x 600 (SVGA),
 1024 x 768 (XGA/575W and 585W only),
 1152 x 864 (SXGA), 1280 x 800 (WXGA/570 and 580 only),
 1280 x 960 (SXGA2), 1280 x 1024 (SXGA3),
 1280 x 768 (WXGA 60-1/570 and 580 only),
 1360 x 768 (WXGA 60-2), 1440 x 900 (WXGA+),
 1400 x 1050 (SXGA+), 1600 x 900 (WXGA++)

Lamp Type 570/575W: 215 W UHE, 580/585W: 245 W UHE

Lamp Life⁶
 570/575W: Up to 10,000 hours (ECO Mode)
 Up to 5000 hours (Normal Mode)
 580/585W: Up to 6000 hours (ECO Mode)
 Up to 4000 hours (Normal Mode)

Throw Ratio Range
 570/580: 0.31 – 0.42, 575W/585W: 0.27 – 0.37

Size (Projected Distance)
 570/580: 55.9" to 93.2" (0.348 to 0.597 m)
 575W/585W: 60" to 100" (0.348 to 0.597 m)

Keystone Correction Manual
 Vertical ± 3 degrees; Horizontal ± 3 degrees

Mac Connectivity
 Projector is Mac compatible via USB, DVI to HDMI or VGA adapter (not included), DP to HDMI or VGA

Contrast Ratio Up to 10,000:1

Color Reproduction Up to 1.07 billion colors

Projection Lens

Type No optical zoom/Manual focus

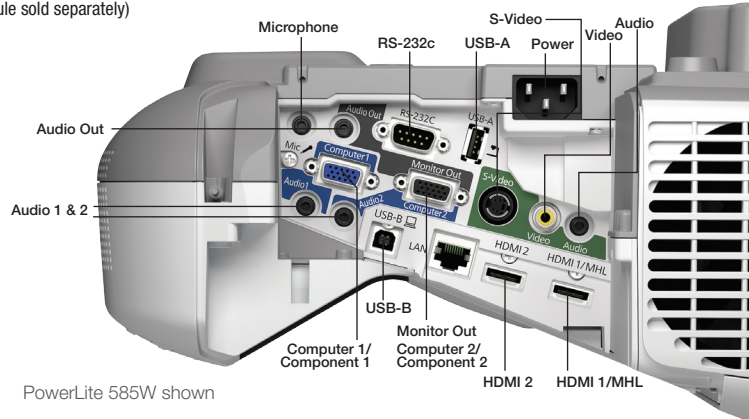
F-number 1.80

Focal Length 3.71 mm

Zoom Ratio Digital zoom 1.0 – 1.35

Interfaces

Wireless LAN Port 802.11 b/g/n
 (optional – module sold separately)



PowerLite 585W shown

Other

Display Performance
 NTSC: 480 lines, PAL: 576 lines (Depends on observation of the multi-burst pattern)

Input Signal NTSC/NTSC4.43/PAL/M-PAL/N-PAL/PAL60/SECAM

Speaker 16 W (mono)

Operating Temperature 41 ° to 95 °F (5 ° to 35 °C)

Power Supply Voltage 100 – 240 V ± 10%, 50/60 Hz

Power Consumption
 570/575W: 333 W (Normal Mode), 239 W (ECO Mode)
 4.3 W Standby (Communication On)
 0.33 W Standby (Communication Off)
 580/585W: 376 W (Normal Mode), 280 W (ECO Mode)
 4.3 W Standby (Communication On)
 0.33 W Standby (Communication Off)

Fan Noise
 35 dB (Normal Mode), 28 dB (ECO Mode)

Security Kensington®-style lock provision, padlock and security cable hole, password protect function

Dimensions (W x D x H)

Including feet: 14.4" x 14.8" x 7.6"
 Excluding feet: 14.4" x 14.8" x 6.1"
 Weight: 11.7 lb

Remote Control

Features Source search, video, LAN, computer, USB, power, aspect, color mode, volume, e-zoom, A/V Mute, freeze, menu, page up and down, help, auto, mouse functions, user, esc

Operating Distance Front/rear: 19.7 ft (6 m)

Support

The Epson ConnectionSM
 Pre-sales support: U.S. and Canada 800-463-7766
www.epson.com

Service Programs
 Two-year projector limited warranty, Epson Road Service program, PrivateLine® dedicated toll-free support and 90-day limited lamp warranty

What's In The Box

PowerLite 570, 575W, 580 or 585W projector, wall mount, 15' power cord, 16' computer cable (VGA), projector remote control, batteries, user manual CD, projector software CDs, Quick Setup Sheet, installation guide, template sheet

Ordering Information

Product Name

PowerLite 570	V11H605020
PowerLite 575W	V11H603020
PowerLite 580	V11H604020
PowerLite 585W	V11H602020

Accessories

Genuine Epson lamp	
570/575W:	V13H010L79
580/585W:	V13H010L80
Replacement air filter	V13H134A40
PowerLite® Pilot™ 2 (ELPCB02)	V12H614020
Active speakers (ELPSP02)	V12H467020
Wireless 802.11b/g/n LAN unit (ELPAP07)	V12H418P12
Quick wireless connection USB key (ELPAP08)	V12H005M08
Epson DC-06 document camera (ELPDC06)	V12H321005
Epson DC-11 document camera (ELPDC11)	V12H377020
Epson DC-12 document camera (ELPDC12)	V12H594020
Epson DC-20 document camera (ELPDC20)	V12H500020
90" Whiteboard	V12H468002
96" Whiteboard	V12H468001



205 Westwood Ave, Long Branch, NJ 07740
 Phone: 866-94 BOARDS (26273) / (732)-222-1511
 Fax: (732)-222-7088 | E-mail: sales@touchboards.com