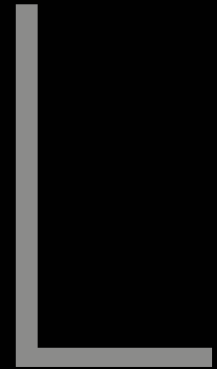


EPSON[®]
EXCEED YOUR VISION



LASER SERIES



NATIVE 4K (12,000 LUMENS) AND
WUXGA (20,000 LUMENS) PROJECTORS



IMMERSIVE



Breakthrough Native 4K Resolution

All projected images in this brochure are simulated.

DESIGNED FOR LIVE EVENTS

For that big reveal, first impressions matter. Whatever the venue size, lighting environment or equipment, there's a lot to keep in mind to make certain all goes off perfectly. With Epson® Pro L Series projectors, you've got one less thing to worry about.

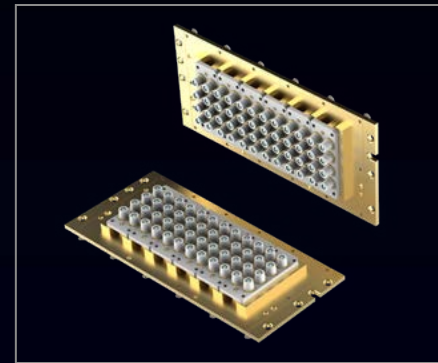
- Laser light source — long life; custom brightness modes
- DMX Art-Net easily integrates with lighting protocols
- Easy installation — 360-degree projection
- Two removable interface slots
- Mechanical shutter
- Sealed light and optical engine
- Tiling assist
- Built-in camera
- Auto image calibration



3LCD AND LASER LIGHT SOURCE

Epson is the first projector manufacturer to combine inorganic 3LCD panels with an inorganic phosphor wheel to achieve higher brightness and reliability. Featuring a lamp-free laser light source, Pro L Series projectors offer numerous advantages:

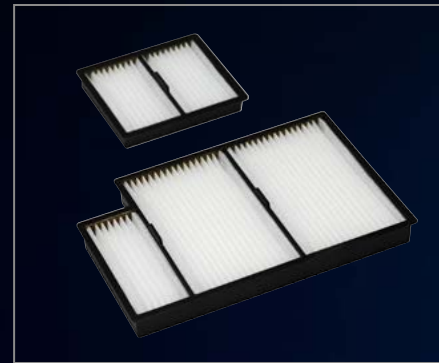
- Solid-state laser light source and electrostatic air filter — for up to 20,000 hours of virtually maintenance-free operation¹
- No waiting for the projectors to warm up or cool down — the projectors reach maximum brightness and turn off almost immediately
- High-speed contrast control, a dynamic contrast ratio up to 2,500,000:1 and a wide color gamut for brilliant, color-rich performance
- Balanced, high-quality images and performance you can count on for an array of applications



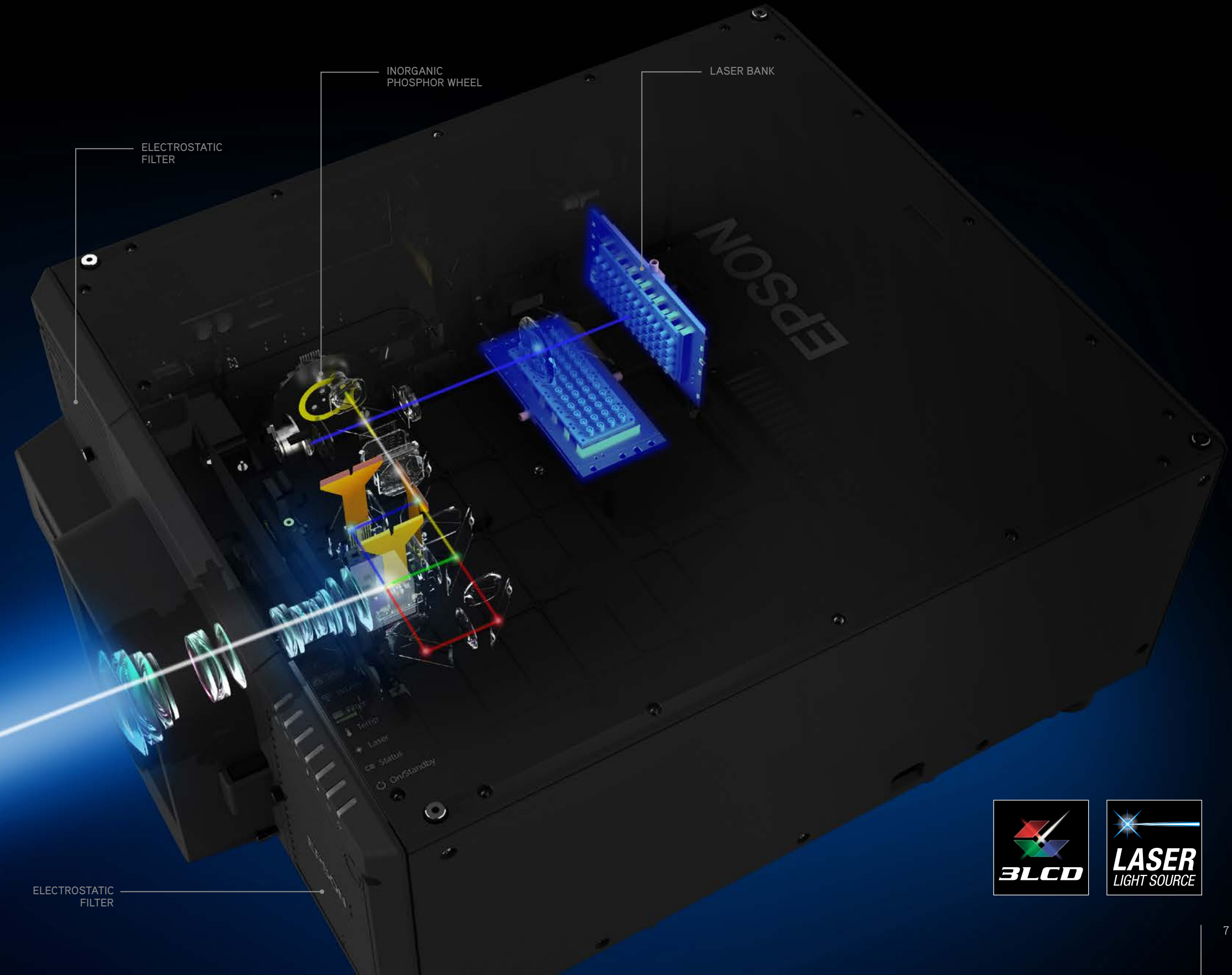
LASER BANK



INORGANIC PHOSPHOR WHEEL



ELECTROSTATIC FILTERS



ELECTROSTATIC FILTER

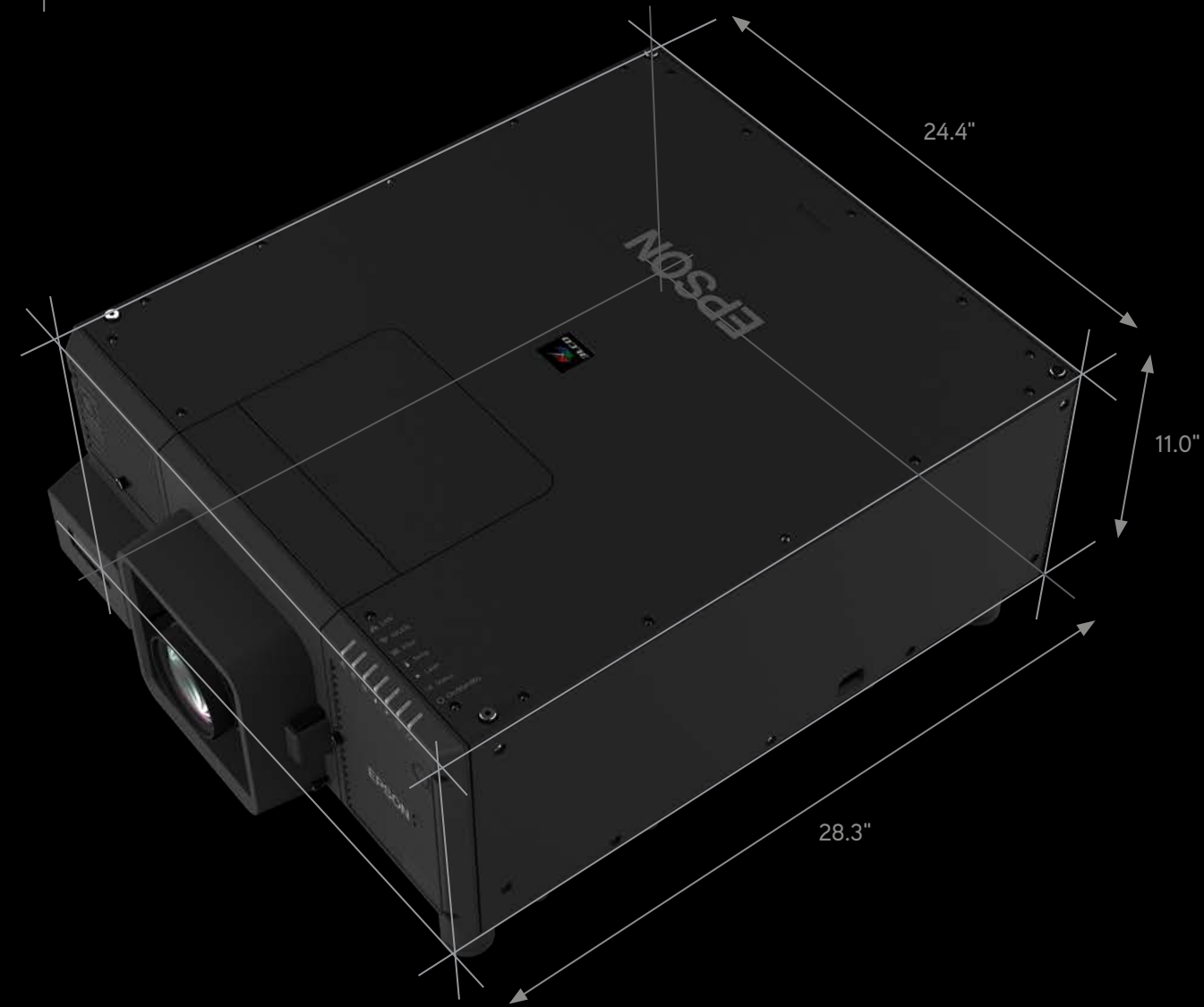


POWERFUL AND COMPACT

Designed to leverage the expertise and high-performance technologies Epson is known for, these high-performance projectors deliver advancements such as a native 4K panel, an innovative cooling system and a zero ultra short-throw offset lens.

BRIGHT OUTPUT, SPACE-SAVING DESIGN

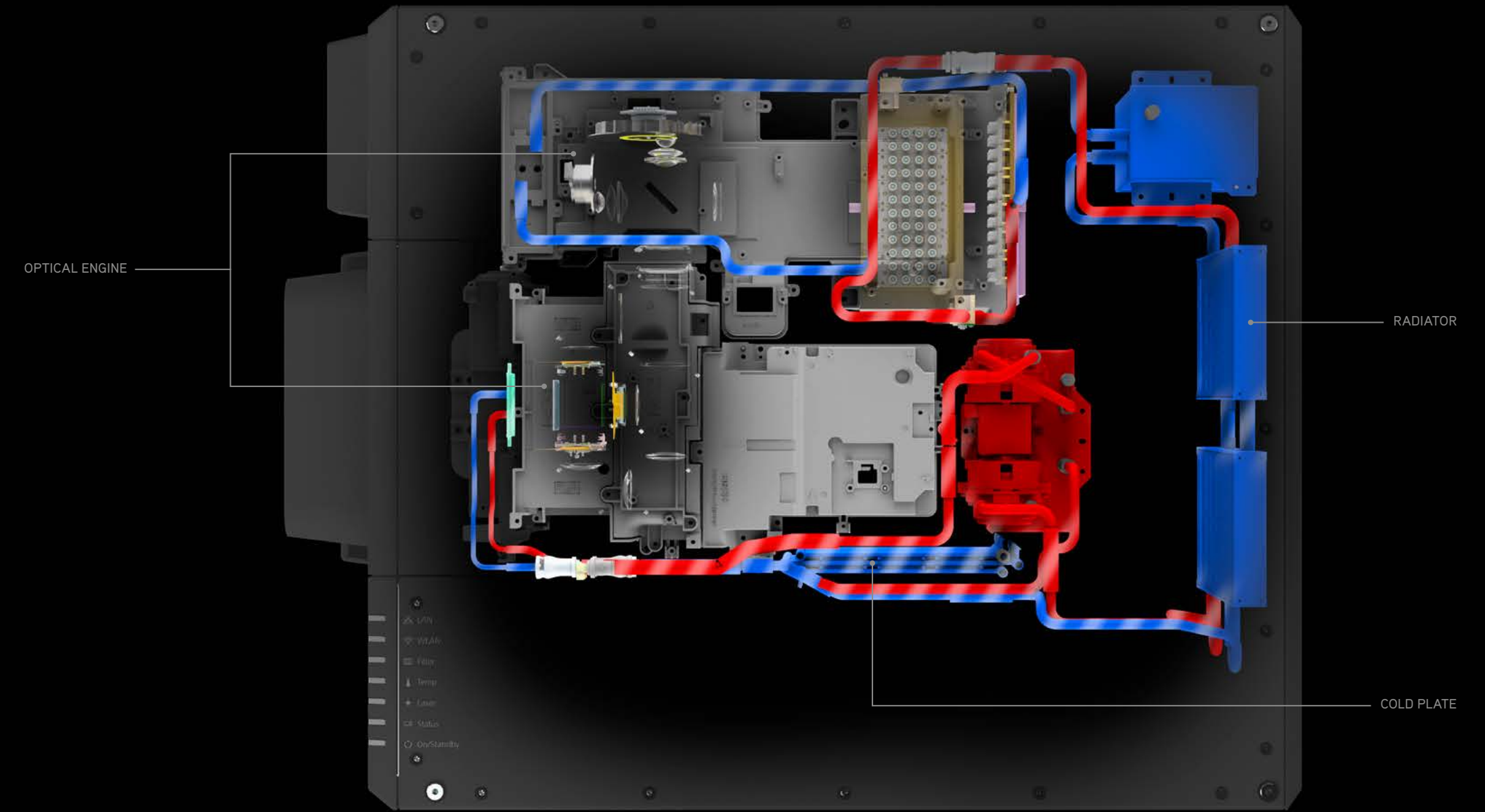
The Pro L20000U and L12000Q are easy to install, whether you're upgrading your existing Epson projector or installing a new one. Choose from a 20,000-lumen WUXGA projector or 12,000-lumen native 4K model. Either way, you're sure to achieve stunning results.



INNOVATIVE LIQUID COOLING SYSTEM

A newly developed liquid cooling system maintains the optimal temperatures of key optical elements. The inorganic LCD panels, inorganic phosphor wheel and laser light source are designed to keep cool no matter how the projector is installed. This efficient cooling system contributes to the projector's compact design.

TOTAL LIQUID COOLING SYSTEM



NATIVE 4K² PANEL

The Pro L12000Q features a 1.03" native 4K panel, designed and manufactured by Epson, to deliver ultra high-definition output and astounding image quality. With its 6 μm pixel pitch, the panel meets the highest standards of quality and performance.



† Pro L12000Q



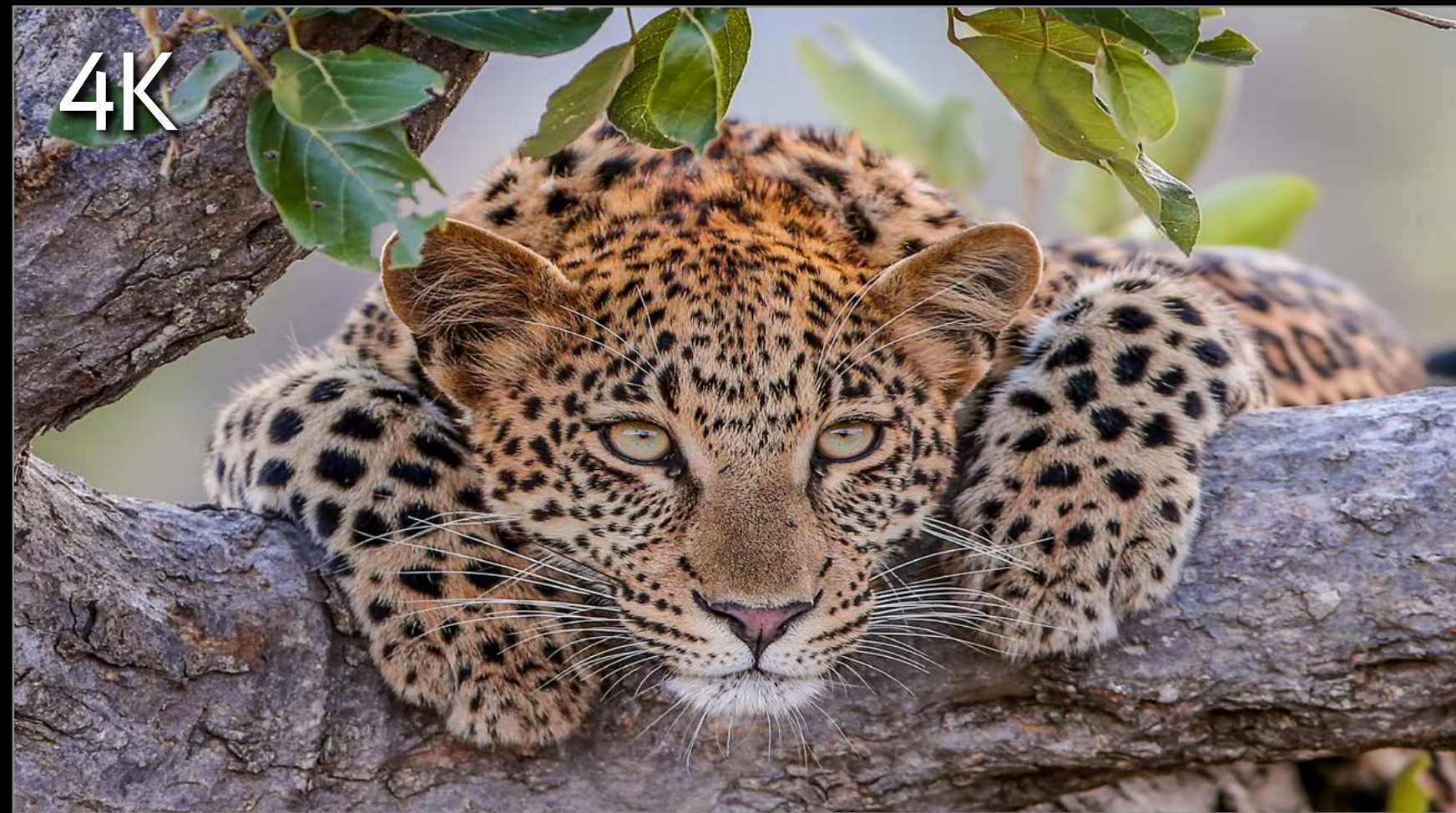
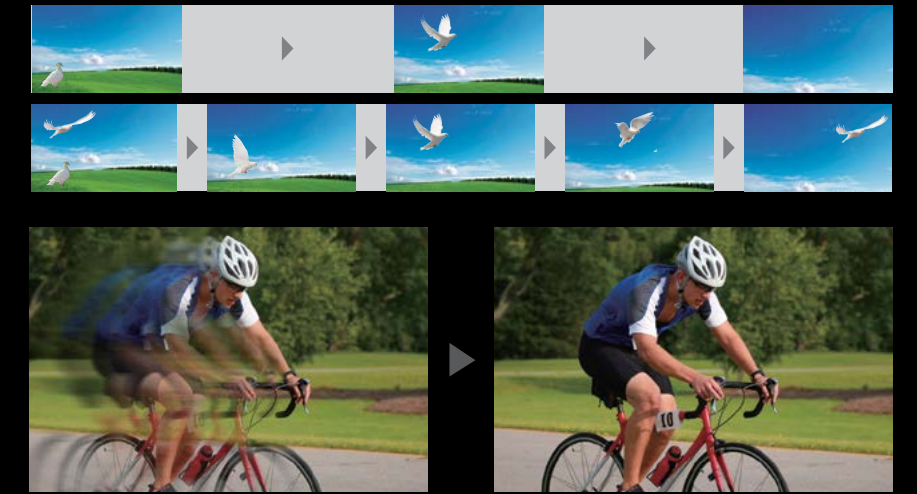
3LCD panel



Manufactured to the highest standards in Epson factories

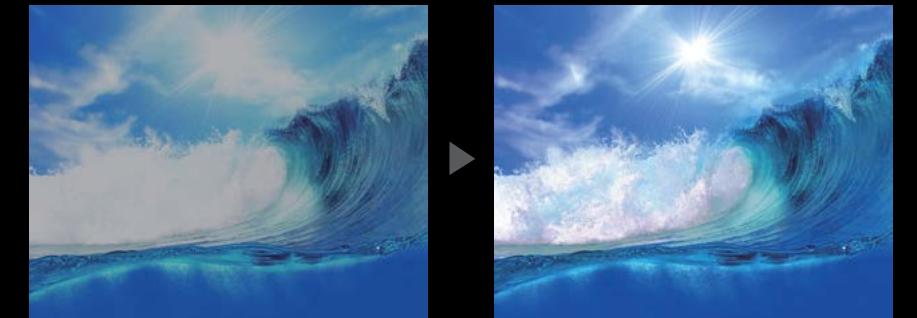
EXTRAORDINARY IMAGE QUALITY

Frame Interpolation²
By analyzing each frame individually, then generating intermediate frames at a rate of 100 Hz/120 Hz, the Pro L20000U delivers ultra smooth video, even when projecting sporting events and other fast-moving content.



© Anthony Goldman / Courtesy NBP Awards

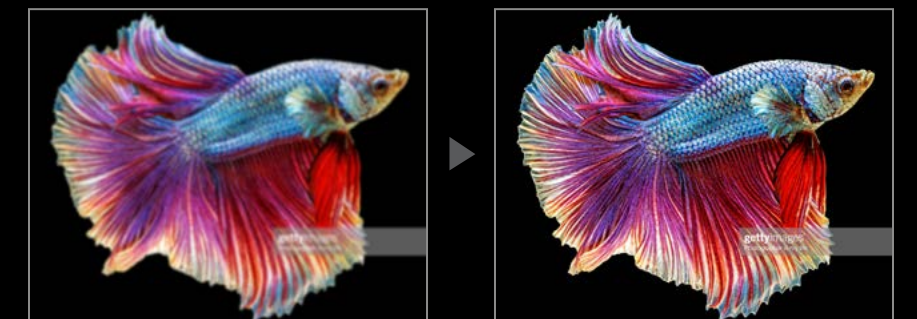
High Dynamic Range HDR
The Pro L20000U and Pro L12000Q projectors support HDR10 and Hybrid Long-Gamma content for dynamic output and a broad tonal range with minimal white or black spotting.



SDR (standard dynamic range)

HDR (high dynamic range)

Image Enhancement
Epson's high-quality image signal processing allows these powerful projectors to consistently deliver crisp, detailed edges.



Without image enhancement technology

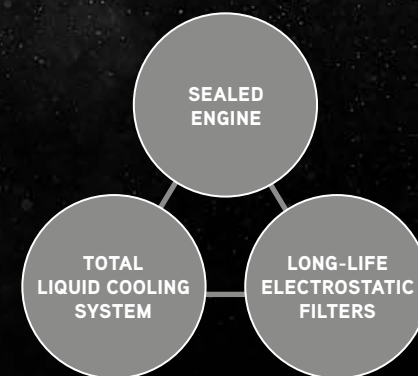
With image enhancement technology

All images on this page are simulated.



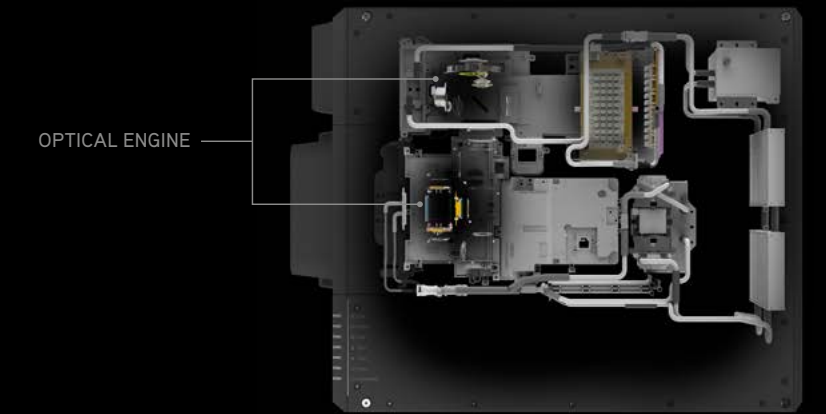
DURABLE, DUST-PROOF STRUCTURE

The Pro L20000U and L12000Q have three layers of protection. The light source and optical elements are both sealed, while the advanced liquid cooling system allows for managed airflow, reducing incoming air to the optical engine by 86 percent³ compared to conventional models⁴. Finally, the replaceable electrostatic filters cut dust intake to minuscule levels for 20,000 hours of virtually maintenance-free performance¹.



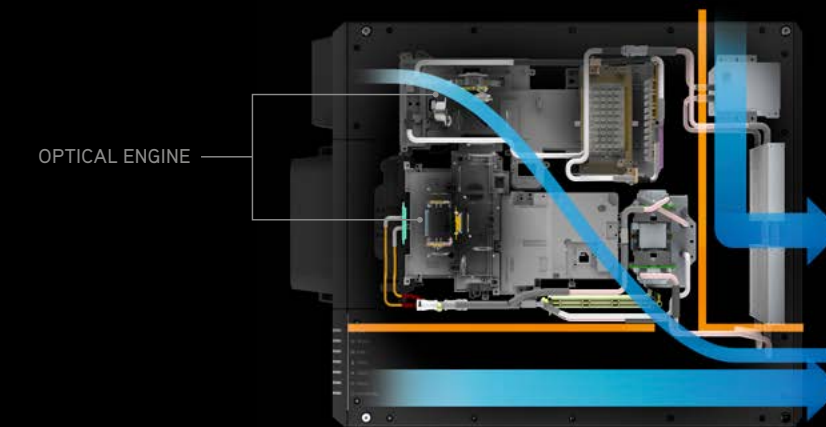
Sealed Optical Engine

Key optical components, including the inorganic panel, inorganic phosphor wheel and laser engine, are sealed to prevent contamination by dust or smoke.



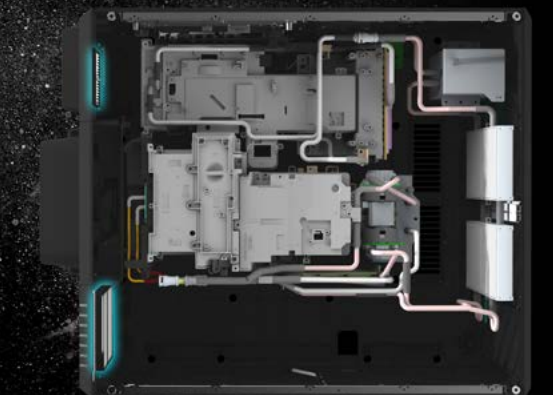
Reduced Airflow

The cooling system takes in air independently for the radiator and power supply. This reduces air flow to the optical engine.



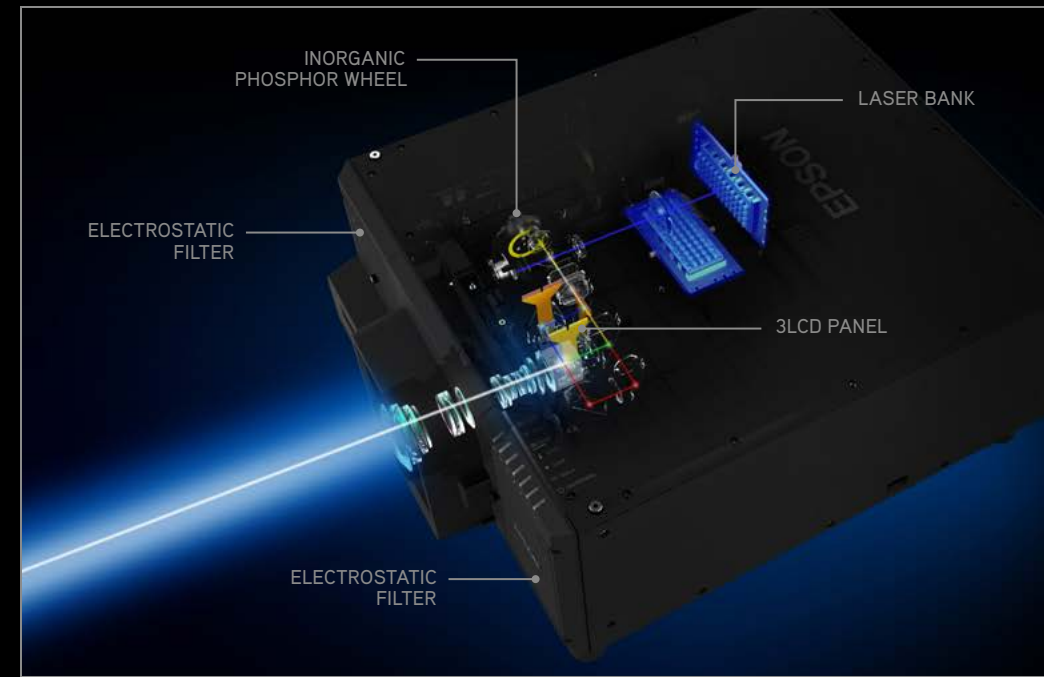
Long-life, Replaceable Electrostatic Filters

Electrostatic filters vastly reduce the risk of incoming dust impairing the optical components.



REMARKABLE RELIABILITY

20,000 Hours of Virtually Maintenance-free Operation¹
 A uniquely designed laser light source and advanced electrostatic filter deliver 20,000 hours of virtually maintenance-free operation¹. Inorganic LCD panels, an inorganic phosphor wheel and a dust-proof design all ensure remarkable reliability, so it's easy to depend on these projectors during live events and critical presentations. Backed by a 20,000 hour warranty⁵, the Pro L20000U and Pro L12000Q offer performance you can count on.



Durable Design

With a pipe frame and baseplate incorporated into the structure, the projector casing offers remarkable durability. The internal structure has also been redesigned to achieve a compact, lightweight performer that's easy to install.



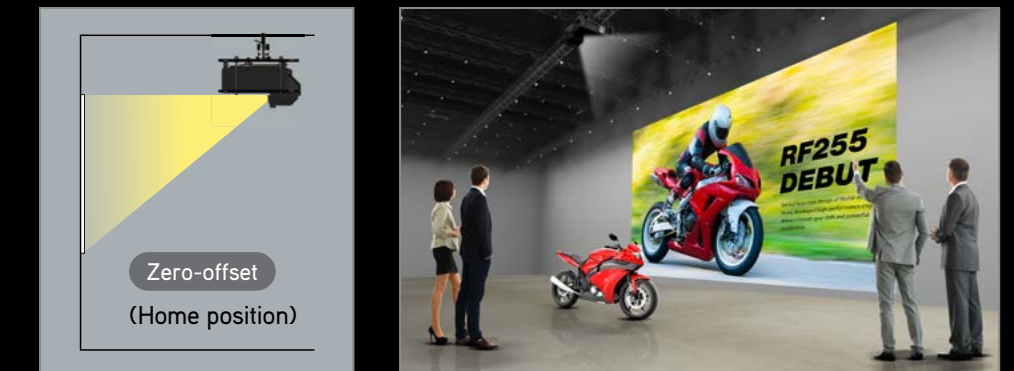
WIDE SELECTION OF POWERED LENSES WITH LENS MEMORY

Up to 10 Lenses to Choose From
 The Pro L20000U and L12000Q projectors offer increased installation flexibility, which allows users to choose the motorized lens best suited for their environment. Choose from a variety of ranges, including ultra short-throw, short-throw, middle-throw and long-throw lenses. A tool-free, quick-release lever enables fast, easy lens exchange. For details, visit Epson.com/projectorlenses

| Part Number | THROW RATIO RANGE | | | |
|-------------|-------------------|-----------|-----------|-----------|
| ELPLL08 | | | 5.09-7.16 | 5.27-7.41 |
| ELPLM11 | | | 3.42-5.23 | 3.54-5.41 |
| ELPLM10 | | 2.34-3.59 | 2.42-3.71 | |
| ELPLM15 | | 1.52-2.47 | 1.57-2.56 | |
| ELPLM06 | | 1.15-1.57 | 1.19-1.62 | |
| ELPLW08 | | 0.83-1.17 | 0.86-1.21 | |
| ELPLW05* | | 0.74-1.03 | N/A | |
| ELPLU04 | | 0.62-0.75 | 0.64-0.77 | |
| ELPLU03* | | 0.46-0.55 | N/A | |
| ELPLX02 | | 0.34 | 0.35 | |

Legend: ■ Pro L12000Q ■ Pro L20000U *Only for Pro L12000Q

Zero-offset Ultra Short-throw Lens
 Project supersized images using the ELPLX02 ultra short-throw lens. Install the projector just inches from the screen or wall — away from foot traffic — and still get huge, bright, crisp projection. Featuring a 0.35 throw ratio and zero offset, this lens is ideal for installation in narrow or tight spaces. And, wide lens shift gives you even more flexibility when you need it.



- Ideal for space-constrained environments — projects large-size images from a short distance away
- Easy installation in narrow spaces and rear-projection applications — 0.35 throw ratio
- Positioning flexibility — extensive lens shift range and zero offset
- Large-screen projection — up to 1,000 inches

Wider Lens Shift Range

Designed with careful consideration of how the lens and optical engine work together, the Pro L20000U and L12000Q offer a remarkably wide lens shift range. They also feature a stepping motor for the range shift mechanism that allows for extremely precise adjustments.

Wide Range of Optical Lenses

An extensive lineup of optional lenses is available for any venue or subject matter.

Powered Lens Position Memory

Up to 10 settings can be stored in the projector memory, including shift positions, focus adjustments and projection sizes.

INTERFACE SLOTS MAKE EXPANSION EASY

Interface slots support a variety of hardware, so you can customize the projector according to your needs. Additionally, they allow for new interfaces and interface updates in the future.

EPSON PROJECTOR PROFESSIONAL TOOL SOFTWARE

Epson Projector Professional Tool Software enables you to easily manage the setup of multiple Epson networked projectors in a single, large space. This intuitive software makes adjustments simple as well. Easily access tools such as geometric correction and Edge Blending. Epson Projector Professional Tool Software supports wired and wireless networks and can be downloaded at no charge from Epson.

ELPIF01

| TERMINAL | PORT | Pro L12000Q | Pro L20000U |
|----------|------|---|---|
| DVI-D | IN:1 | Single Link / Up to WUXGA | Single Link / Up to WUXGA |
| HDMI | IN:1 | 18Gbps / Up to 4K 60Hz RGB:8bit | 10.2Gbps / Up to 4K 60Hz YCbCr 4:2:0 |
| DC Out | IN:1 | 5V 500mA for extension cable which needs external power | |



ELPIF02

| TERMINAL | PORT | Pro L12000Q | Pro L20000U |
|----------|---------------|--|---------------------------------|
| SDI | IN:4 OUT:4 | SD/HD/3G/12G* Single Link or Quad Link Up to 4Kx60Hz YCbCr 4:2:2 | N/A Due to power consumption |



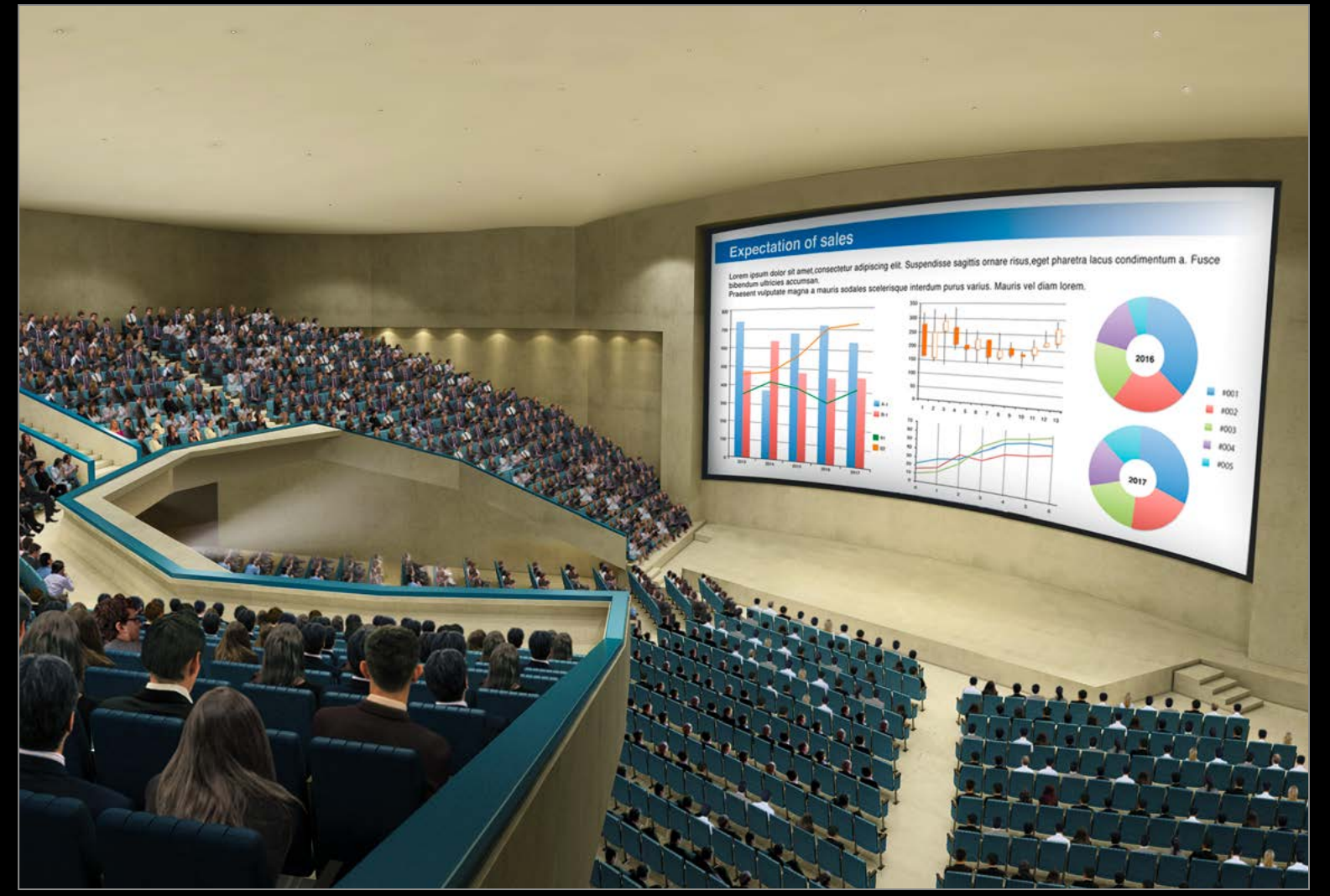
*SDI 1 terminal only
*SDI board for Slot 1 & Slot 2 cannot be used at the same time

ELPIF03

| TERMINAL | PORT | Pro L12000Q | Pro L20000U |
|-------------|------|---|---|
| DisplayPort | IN:2 | 32.4Gbps / Up to 4K 120Hz RGB:4:4:4* | 10.2Gbps / Up to 4K 60Hz YCbCr 4:2:0 |



* Dual Link



FASTER INSTALLATION

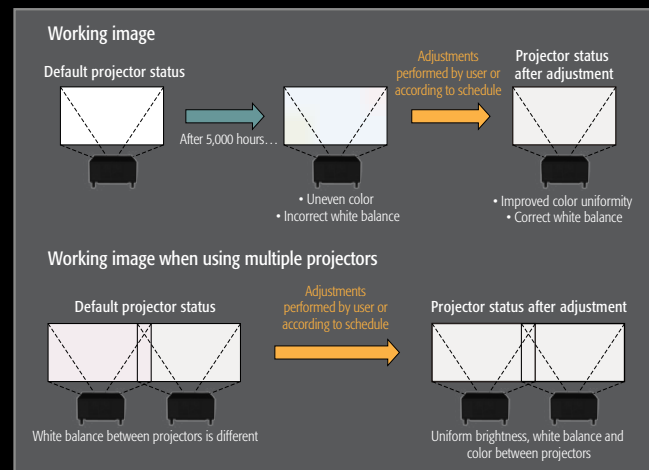
Tiling Assist

The built-in camera automatically compensates for overlapping areas and corner positions to deliver seamless multi-projector displays, making big-screen projections a snap.



Auto Color Adjustments

The built-in camera detects subtle color inconsistencies between multiple projectors. It detects screens that have become unevenly colored over time, allowing the projector to automatically correct color. This function can be set to check color manually or automatically at regular intervals to deliver stable image quality with minimal maintenance.

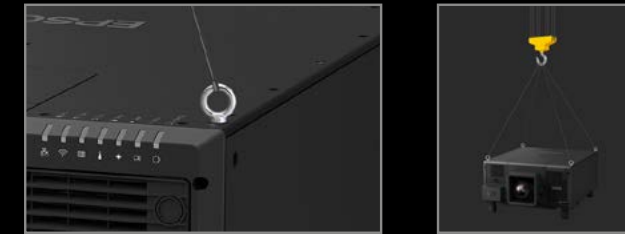


Geometry Correction and Edge Blending

Built-in edge blending to create multi-screen panoramic images. A variety of geometry corrections — like corner and curved projections are also built in.

Screw Holes for Eyebolts

Screw holes are provided on both the top and bottom. Strong threads make it safe and easy to transport the projector via a crane.



DMX Art-Net

The Pro L20000U and Pro L12000Q projectors support DMX Art-Net to easily synchronize lighting effects (such as pre-programmed sequences) with audio.

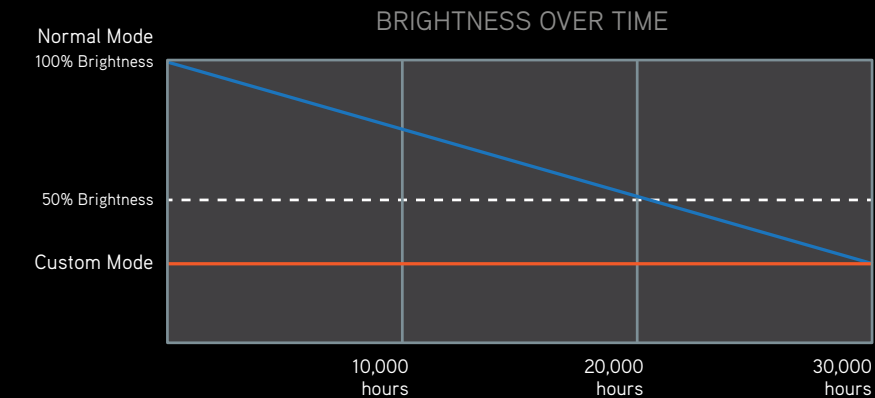
Mechanical Shutter

The mechanical shutter inside the unit is protected against damage from laser lights, which are sometimes part of lightshows.

100V Startup for Setup

The projectors support 100 V power operation for fast, easy installation and setup. The brightness is typically around 70 percent of maximum brightness at 100 V operation.

CUSTOMIZABLE BRIGHTNESS MODES



The blue line is a simplified representation of brightness decline over time in Normal Mode. Actual decline may vary depending on usage environment.

The Pro L20000U and L12000Q projectors offer customizable brightness modes for different applications. These modes allow users to preset brightness and noise levels, as well as maintenance cycles.

- Normal Mode — Designed for maximum brightness needs — ideal for conference rooms, auditoriums and live events.
- Extended Mode — Extends the maintenance cycle by decreasing the brightness by 30 percent — ideal for darker environments with ambient light, such as museums and art galleries, where a reduced maintenance cycle is desired.
- Constant Mode — Maintains the light output of the projector at a constant and consistent brightness — ideal for applications such as command centers.
- Quiet Mode — Reduces the noise level to as low as 30 dB by decreasing the brightness by 30 percent — ideal for libraries, theaters, museums and art galleries.
- Custom Mode — Allows the user to set the brightness of the projector at a variable level from 100 percent to as low as 30 percent to extend the life of the projector.
- Brightness Lock — Allows administrators to prevent changes to the brightness settings.



Custom Mode — Command Center



Quiet Mode — Museum

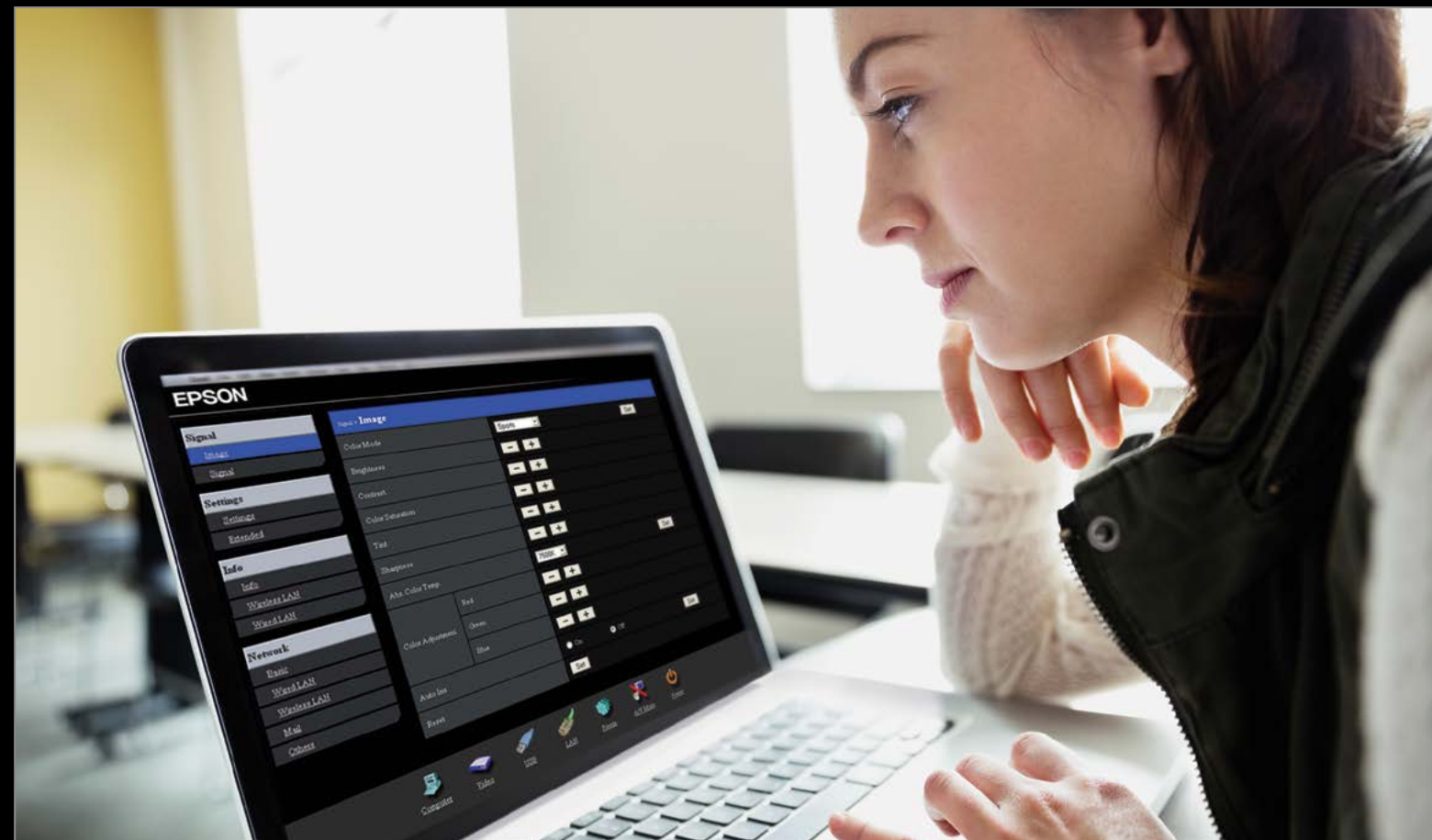
MANAGEMENT AND CONTROL

Epson Projector Management

If you are searching for a solution that gives you control over your time, Epson network projectors with Epson Projector Management capabilities can help. Epson network projectors contain built-in remote access, with no licensing fee added, to Epson Monitor software. These features also give you added control, and the ability to troubleshoot and monitor all Epson network projectors from any computer over a wired or wireless Ethernet network.

Additional features to assist administrators/help desk:

- Remote access and control through the network
- Remote monitoring of up to 1,024 Epson networked projectors
- View status, including input sources, power on/off, lamp life hours and more
- Preventative maintenance features including temperature levels and error alerts
- Schedule filter and lamp timer settings
- Email notification (SMTP) to send alerts to your handheld device
- Enterprise SNMP plug-in available



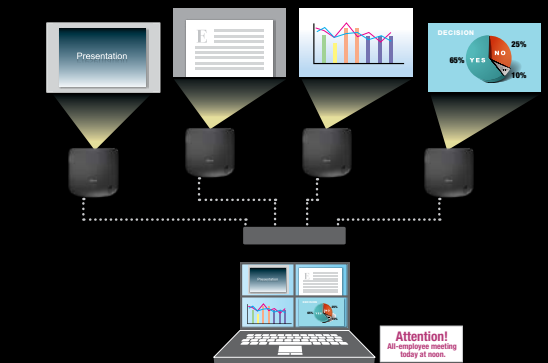
Network Projection — Content Over IP

Use Epson Projector Management to display your computer screen through the projector, via a network, for effective meetings, presentations and digital signage applications. You can use either wired or high-security wireless LAN connections and project the same or up to four different images on up to four projectors, or display a panoramic image.



Full Networkability

Epson network projectors can also be accessed from your browser via an internal webpage. Whether you assign a static IP address or enable DHCP, the projector becomes accessible once it's integrated in your network. The internal webpage lets you control items such as network configuration, projector settings and email alerts.



Message Broadcasting⁶

This innovative feature enables you to broadcast customized images/alerts over the network for announcements or instructions. Messages can be sent to up to 1,024 projectors simultaneously and will overwrite the current screen content if the projector is being used, unless this function is disabled by the presenter. If the projector is off, Message Broadcasting will turn the projector on and then display the message.



Status Monitor

Quickly check the signal, voltage and network information via the monitor.

Settings on Standby

Configure IP settings and reset default values without powering up.

Power Supply Log

Monitor and log times with drops in voltage. The ability to log up to 30 voltage drops can help determine the cause of unexpected shutdowns.

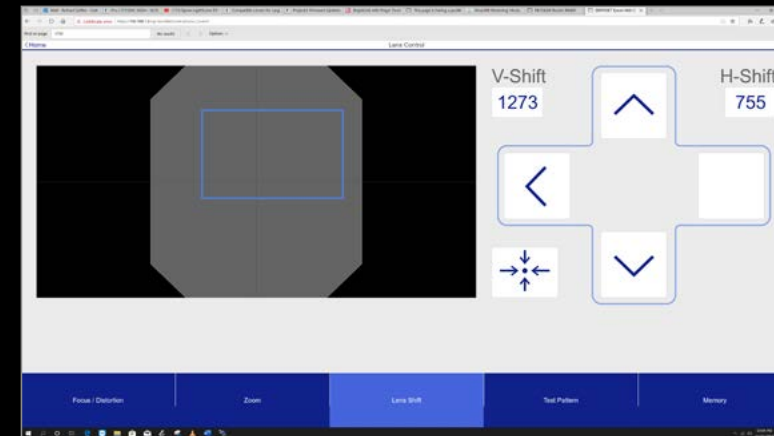
Multiple Interfaces

There are multiple interface options with the Pro L20000U and Pro L12000Q. The LAN terminal is a robust, lockable etherCON connector for reliable performance, even after repeated use. The Pro L12000Q supports using one cable, via 12G SDI⁷, to output a 12G signal from the terminal, while the optional ELPIF03 interface board has a DisplayPort connector that supports 4K – 120 Hz signals.



Web Control with Multi-device Support

Use a web browser or smart device to adjust projector settings. The newly developed OSD Control Pad function makes it easy to control the OSD menu. It even displays a representation of the lens condition on your smart device.



PRODUCT SPECIFICATIONS | DETAILS AND ACCESSORIES

| MODEL | PRO L12000Q | PRO L12002QNL | PRO L20000U | PRO L20002UNL |
|--|---|---------------|-----------------------|---------------|
| Product Code | V11H832820 | V11H832920 | V11H833820 | V11H833920 |
| Road Service Warranty | The projector has a limited warranty of 3 years or 20,000 hours, whichever comes first. | | | |
| Basics | | | | |
| Color Brightness | 12,000 lumens | | 20,000 lumens | |
| White Brightness | 12,000 lumens | | 20,000 lumens | |
| Native Resolution | 4K UHD (3840 x 2160) | | WUXGA (1920 x 1200) | |
| Contrast Ratio | 2,500,000:1 | | | |
| Light Source | Laser Diode | | | |
| Split Screen | Yes | | | |
| Edge Blending | Yes | | | |
| Scheduling Function | Yes | | | |
| Weight (without standard lens, not included) | 113.3 lb | | 109.3 lb | |
| Power Consumption | 1741 W | | 1860 W | |
| Power Supply Voltage | Requires 200-240V for full spec. operation | | | |
| Dimensions (including feet & Lens) | 24.4" x 14.1" x 31.1" | | | |
| Wired | RJ-45 | | | |
| Wireless | Built in | | | |
| Message Broadcasting | Yes | | | |
| Multi-PC Projection | Yes | | | |
| Device Management Software (Moderator) | Yes | | | |
| Crestron RoomView Enabled | Yes | | | |
| Connections | | | | |
| DVI-D | DVI-D x 1 | | | |
| HDMI (HDCP 2.2) | HDMI x 1 | | | |
| HDBaseT | Yes | | | |
| Analog Connections | VGA x 1 | | 5-BNC, VGA x 1 | |
| SDI | 12G-SDI | | 3G-SDI | |
| Display Port | DP x 2 (optional interface board) | | | |
| USB 2.0 Connectors | Type B x 1 / Type A x 1 | | | |
| Monitor Out | Mini D-sub 15-pin x 1 | | Mini D-sub 15-pin x a | |
| Serial Control | Serial: RS-232c x 1 | | | |
| Recommended Accessories | | | | |
| | Replacement Air Filter (ELPAF58) V13H134A58 | | | |
| | HDMI/DVI-D Interface Board (ELPIF01) V12H917F01 | | | |
| | SDI Interface Board (ELPIF02) V12H918F01 | | | |
| | Display Port Interface Board (ELPIF03) V12H916F01 | | | |
| | Epson Ceiling Mount - Low Ceilings (ELPMB47) V12H802010 | | | |
| | Epson Ceiling Mount - High Ceilings (ELPMB48) V12H803010 | | | |

DIMENSIONS



Pro L12000Q

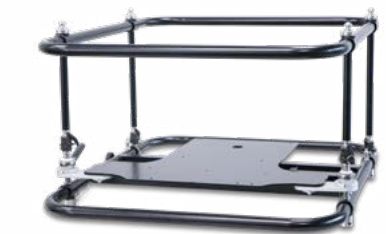


ACCESSORIES



Low Ceiling Mount (ELPMB47)

High Ceiling Mount (ELPMB48)



Low Ceiling Mount (ELPMB47)

For additional mounting solutions visit epson.com/largevenue

EPSON BUSINESS SOLUTIONS

Epson is a leading provider of innovative technology solutions that help businesses succeed. We partner with you to best meet your specific needs, focusing on:

- Improved productivity
- World-class customer service and support
- Cost-effective, high-quality solutions
- A commitment to the environment

Discover how Epson can help you work toward the future — www.epson.com/forbusiness

Better Products for a Better Future™
eco.epson.com



Epson America, Inc.
3840 Kilroy Airport Way, Long Beach, CA 90806

Epson Canada Limited
185 Renfrew Drive, Markham, Ontario L3R 6G3

epson.com/largevenue
epson.ca/largevenue

- 1 No required maintenance for the light source and filter up to 20,000 hours. Approximate time until brightness decreases 50% from first usage. Measured by acceleration test assuming use of 0.04 - 0.20 mg/m³ of particulate matter. Time varies depending on usage conditions and environment. Replacement of parts other than the light source may be required in a shorter period.
- 2 Only for the Pro L20000U.
- 3 Measured by acceleration test assuming use of 0.04 - 0.20 mg/m³ of particulate matter. Time varies depending on usage conditions and environments.
- 4 Compared with Pro L25000U. Results may vary depending on usage conditions.
- 5 3 years or 20,000 hours, whichever comes first.
- 6 Works only with Epson projectors that support presentation over the network capability.
- 7 Only SDI terminal 1.



Pro L20000U: No direct eye exposure to the beam is permitted. RG3 IEC62471-5:2015. Class 1 Laser Product IEC 60825-1:2014



Pro L20000U: Warning! – Do not look into the beam. Hazard Distance: Refer to the manual. Not for household use.