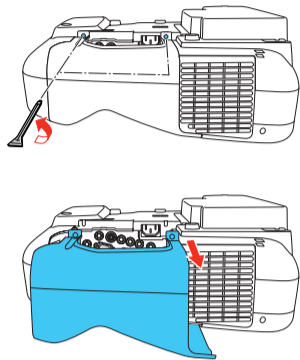


Quick Setup

Before using the projector, make sure you read the safety instructions in the online *User's Guide*.

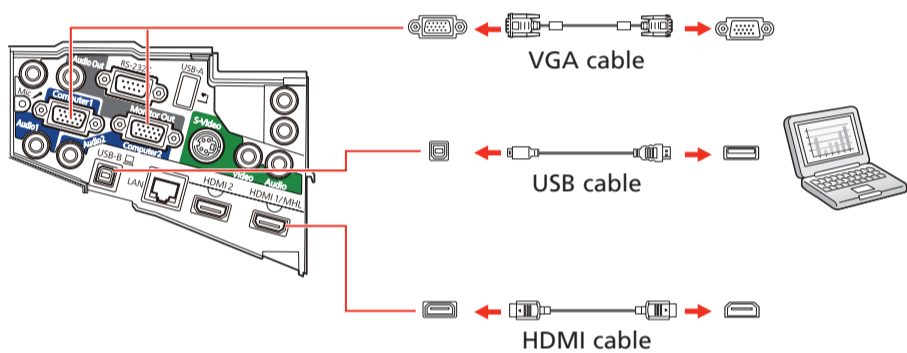
Connect the projector

Before you can connect to the projector, you need to remove the screws and the cable cover.



Computer

Choose from the following connections. See the sections below or the online *User's Guide* for details.



USB port

Connect the square end of a USB cable to the projector's **USB-B** (square) port. Connect the flat end of the cable to any USB port on your computer.

Windows® 2000 SP4 or later: After turning on the projector, follow the on-screen instructions to install the Epson® USB Display software (**EMP_UDSE.EXE**; only on first connection). If the software screen does not display automatically, open **My Computer** or **Computer**, then double-click **EPSON_PJ_UD**.

OS X 10.5.8 or higher: After turning on the projector, the setup folder for USB Display appears in the Finder. Double-click **USB Display Installer** and follow the on-screen instructions to install the Epson USB Display software (only on first connection).

Computer port

Connect one end of a VGA cable to the projector's **Computer1** or **Computer2** port, and the other end to your computer's monitor port. If you are using a laptop, switch it to external display (see "Troubleshooting"). You can also connect an audio cable.

HDMI port

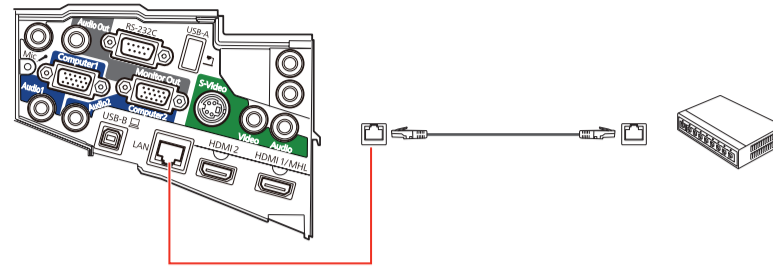
Connect one end of an HDMI cable to one of the projector's **HDMI** ports and the other end to an HDMI port on your computer.

External monitor and speakers

You can connect an external monitor and external speakers to your projector to enhance your presentations. See the online *User's Guide* for details.

Wired network

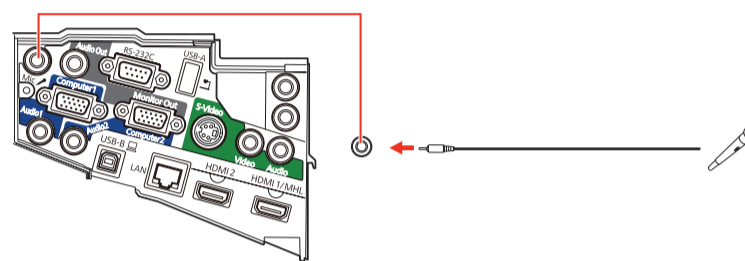
Connect the projector to your network using an Ethernet cable. See "Project over a wired network" for more information.



Note: To connect to a wireless network, you must install the optional Epson Wireless LAN Module (ELPAP07). To purchase the Epson Wireless LAN Module or other accessories, see "Optional accessories". For more information, see the online *User's Guide*.

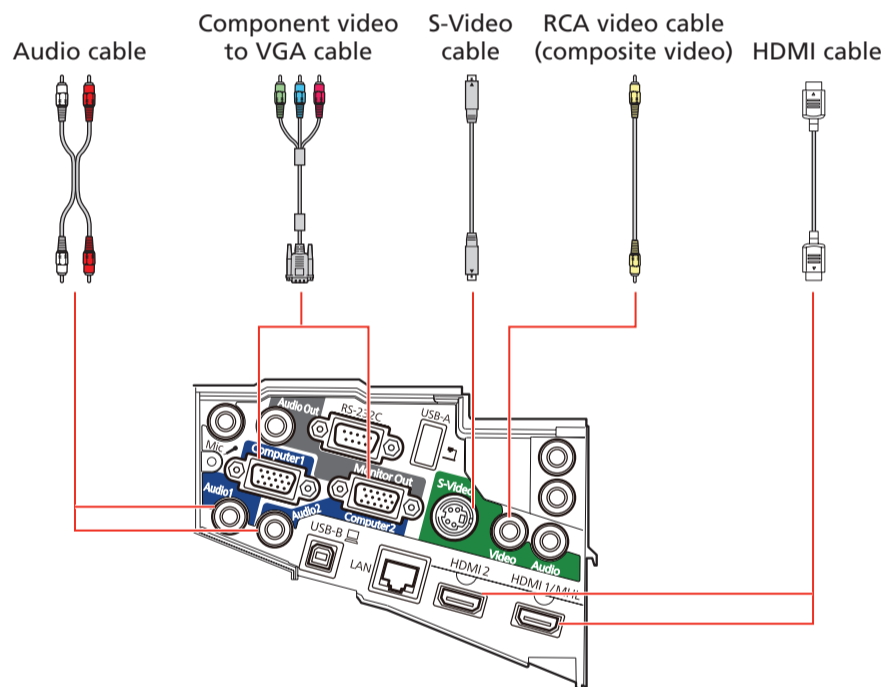
Microphone

Connect a dynamic microphone to the **Mic** port, using a 3.5 mm mini-jack cable.



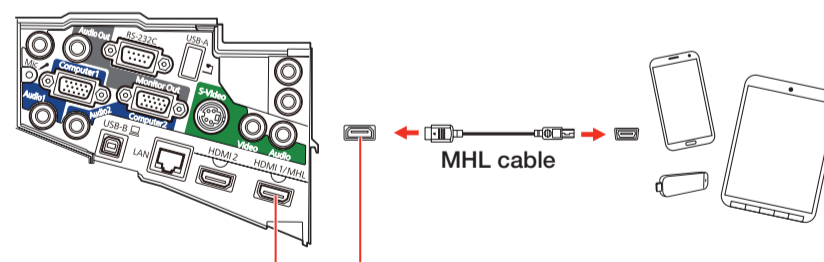
Video device

Connect up to 6 video devices and use the **Source Search** button on the projector or remote control to switch between them. For more information on playing sound through the projector, see the online *User's Guide*.



Mobile media device

Connect tablets, smartphones, and other devices that support the MHL™ standard to the **HDMI 1/MHL** port.

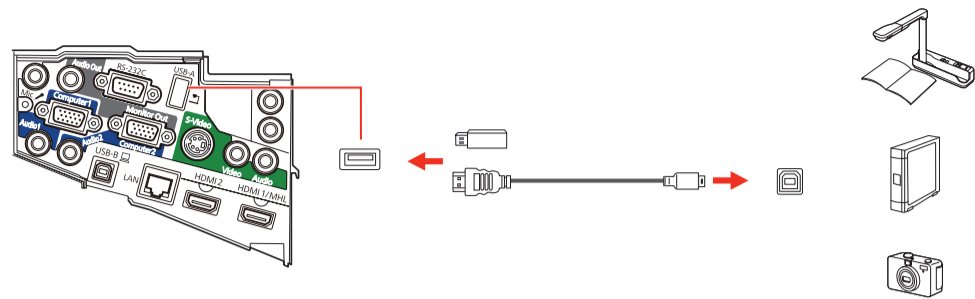


Devices that support an MHL connection include the Samsung™ Galaxy Note II™ and the Roku® Streaming Stick™. Some devices may require an adapter or may not require an MHL cable. Not all features or functions may be supported. Check your device's documentation for more information.



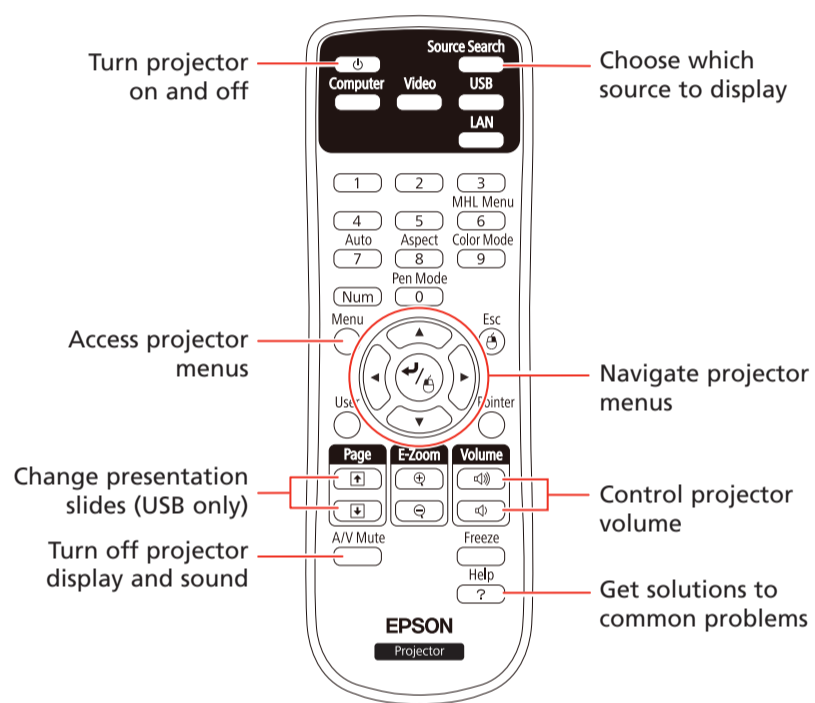
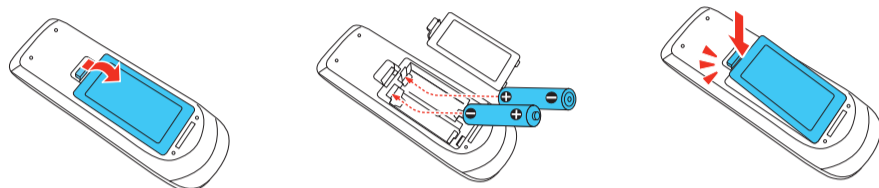
Camera, USB device, or document camera

Connect a digital camera, USB flash drive, USB storage device, or Epson DC-06 document camera to the projector's **USB-A** (flat) port.



Using the remote control

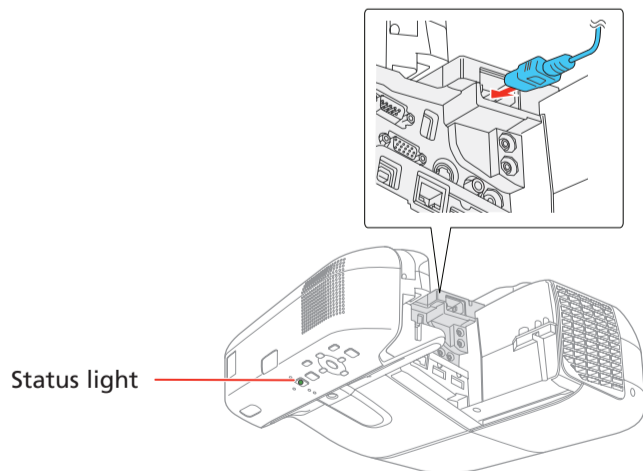
Make sure the batteries are installed as shown (two AA batteries).



For more information on using the remote control, see online *User's Guide*.

Turn on your equipment

- 1 Turn on your computer or video source.
- 2 Make sure the power cord is connected and plugged into an electrical outlet.



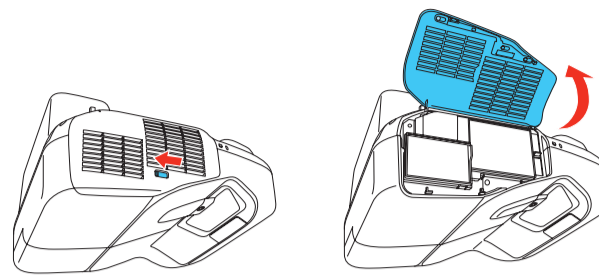
- 3 Press the power button on the projector or remote control. The projector beeps, and the Status light flashes blue and then stays on.

Note: To shut down the projector, press the power button twice.

- 4 If you don't see an image, press the **Source Search** button on the remote control to select the image source.

Note: If you still see a blank screen or have other display problems, see the troubleshooting tips on the back of this sheet.

- 5 If you need to focus the image, first slide the switch on the side of the projector to open the air filter cover. Then raise or lower the focus lever to sharpen the image.



- 6 The default language of the menu system is **English**. To select another language, press the **Menu** button on the remote control. Select **Extended** and press . Select **Language** and press . Select your language and press . Press the **Menu** button to exit the menu system.

Project over a wired network

If you need to configure the projector for your network, see "Network Configuration" on the back of this sheet.

- 1 Press the **LAN** button on the remote control. You see this screen.



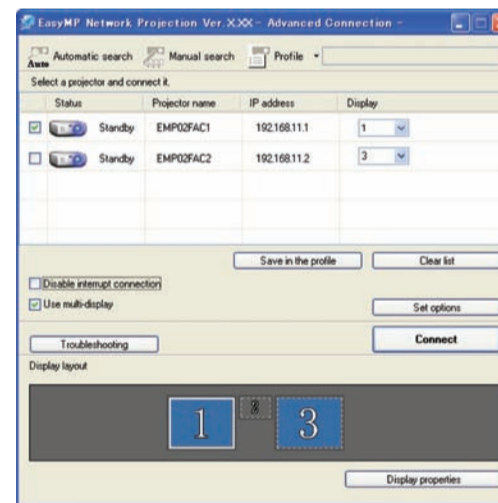
- 2 Start EasyMP® Network Projection on your computer.

Windows 8: Navigate to the **Apps** screen and select **EasyMP Network Projection**.

Other versions of Windows: Select or **Start > Programs** or **All Programs > EPSON Projector > EasyMP Network Projection**.

OS X: Double-click the **EasyMP Network Projection** icon in the Applications folder.

- 3 Select **Advanced Connection Mode** and click **OK**.



- 4 Select the projector you want to connect to, then click **Connect**.

If you don't see the projector you want, click the **Automatic search** button.

- 5 If you see a message asking for a keyword, enter the four digits that appear on the LAN standby screen and click **OK**.

Your computer image is projected, with a floating toolbar:



When you're done presenting, click **Disconnect** on the toolbar.

Note: To project wirelessly, you need the optional wireless LAN module. For more information about using the projector on a network, see the online *User's Guide*.

Network configuration

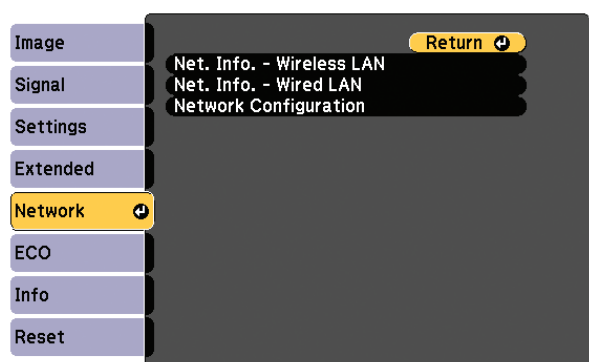
Install the EasyMP Network Projection software on each computer that will project over the network. Use the CD labeled *EPSON Projector Software* to install the program.

For instructions on installing and using your network software, click the icon on your desktop to access the online *EasyMP Network Projection Operation Guide* (requires an internet connection). If you don't see the EasyMP Network Projection Guide icon, you can install it from the projector CD or go to the Epson support site (see "Where to get help").

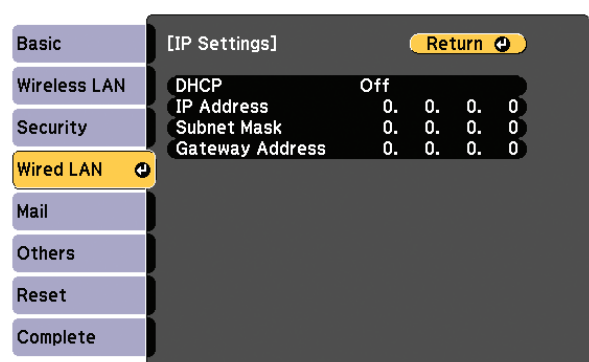
To monitor and control your projector over the network, download and install the EasyMP Monitor software (Windows only) and manual from the Epson support site. You can install a link to the downloads page from the projector CD or go to the Epson support site (see "Where to get help").

Follow the steps here to configure your projector for your wired network using the projector's menu system.

- 1 Press the **Menu** button on the remote control, select the **Network** menu, then press \leftarrow/\rightarrow .



- 2 Choose **Network Configuration** and press \leftarrow/\rightarrow .
- 3 Select the **Wired LAN** menu and press \leftarrow/\rightarrow .
- 4 Choose **IP Settings** and press \leftarrow/\rightarrow . You see a screen like the following:



- 5 If your network assigns addresses automatically, turn on the **DHCP** setting. If not, make sure DHCP is off and enter the projector's **IP Address**, **Subnet Mask**, and **Gateway Address**, as needed. Then press **Esc**.
- 6 When you are finished, select **Complete** and press \leftarrow/\rightarrow , then press \leftarrow/\rightarrow again to save your settings.
- 7 Press the **Menu** button to exit the menu system.

Mobile device

To project from an iOS or Android™ device, download and install the Epson iProjection™ app. Visit www.epson.com/projectorapp (U.S.) or www.epson.ca/projectorapp (Canada) for more information.



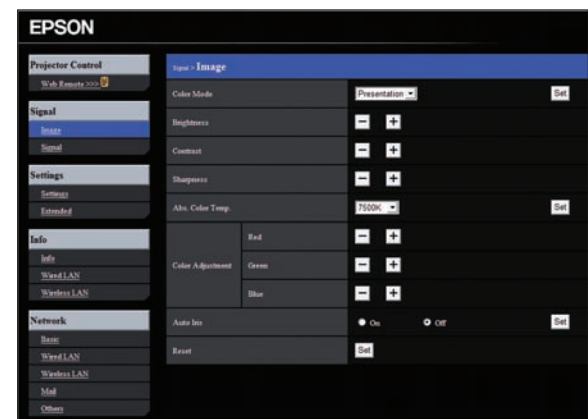
Using web remote

You can use a standard web browser to control the projector through the network. A "virtual remote control" on your computer screen lets you perform many of the same functions as you can with the physical remote control.

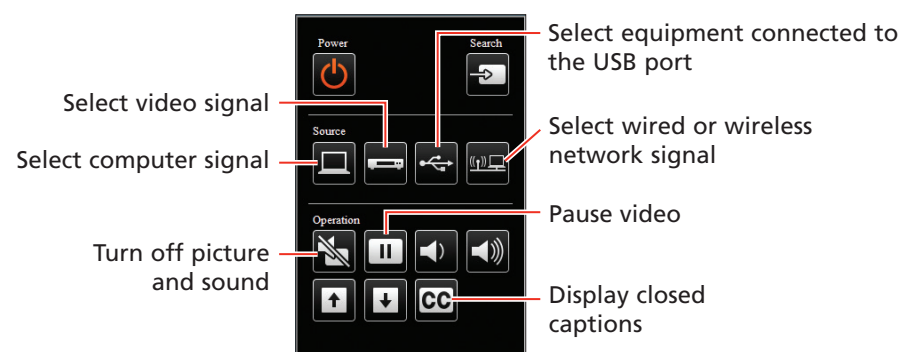
- 1 Open your web browser and enter the IP address of the projector you want to monitor in the browser window.

If you're not sure what the address of the projector is, turn the projector on and select **Net. Info.-Wired LAN** or **Net. Info.-Wireless LAN** from the Network menu to display the IP address of the projector. (Do not enter the leading zeroes.)

- 2 Enter **EPSONWEB** as the default user name and **admin** as the default password, then press \leftarrow/\rightarrow .



- 3 From the Projector Control menu, select **Web Remote**. Use the on-screen buttons to operate the projector, as you would using the remote control.



Troubleshooting

If you see a blank screen or the **No signal** message after turning on your computer or video device, check the following:

- Make sure the Status light on the projector is blue and not flashing.
- Press the **Source Search** button on the projector or the remote control to switch to the correct image source, if necessary.
- If you're using a Windows laptop, press the function key on your keyboard that lets you display on an external monitor. It may be labeled **CRT/LCD** or have an icon such as . You may have to hold down the **Fn** key while pressing it (such as **Fn + F7**). Wait a moment for the display to appear.
- If you're using a Mac laptop, open **System Preferences** and select **Displays**. Select the display or **Color LCD** option if necessary, then click the **Arrange** or **Arrangement** tab, and select the **Mirror Displays** checkbox.

Where to get help

Manuals

For more information about using the projector, click the icons on your desktop to access the online manuals (requires an Internet connection). If you don't have icons to the manuals, you can install them from the projector CD or go to the Epson website, as described below.

Telephone support services

To use the Epson® PrivateLine® Support service, call (800) 637-7661. This service is available for the duration of your warranty period. You may also speak with a support specialist by calling (562) 276-4394 (U.S.) or (905) 709-3839 (Canada).

Support hours are 6 AM to 8 PM, Pacific Time, Monday through Friday, and 7 AM to 4 PM, Pacific Time, Saturday. Days and hours of support are subject to change without notice. Toll or long distance charges may apply.

Internet support

Visit epson.com/support (U.S.) or epson.ca/support (Canada) for solutions to common problems. You can download utilities and documentation, get FAQs and troubleshooting advice, or e-mail Epson.

Registration

Register today to get product updates and exclusive offers. You can use the CD included with your projector, or register online at epson.com/webreg.

Optional accessories

For a list of optional accessories, see the online *User's Guide*.

You can purchase screens or other accessories from an Epson authorized reseller. To find the nearest reseller, call 800-GO-EPSON (800-463-7766). Or you can purchase online at epsonstore.com (U.S. sales) or epson.ca (Canadian sales).

Touchboards

205 Westwood Ave, Long Branch, NJ 07740
Phone: 866-94 BOARDS (26273) / (732)-222-1511
Fax: (732)-222-7088 | E-mail: sales@touchboards.com

EPSON®
EXCEED YOUR VISION



EPSON, EasyMP, and PowerLite are registered trademarks, Epson iProjection is a trademark, and EPSON Exceed Your Vision is a registered logomark of Seiko Epson Corporation. PrivateLine is a registered trademark of Epson America, Inc.

Mac and OS X are trademarks of Apple Inc., registered in the U.S. and other countries.

General Notice: Other product names used herein are for identification purposes only and may be trademarks of their respective owners. Epson disclaims any and all rights in those marks.

This information is subject to change without notice.

© 2014 Epson America, Inc., 1/14
Printed in XXXXXX

CPD-40431