


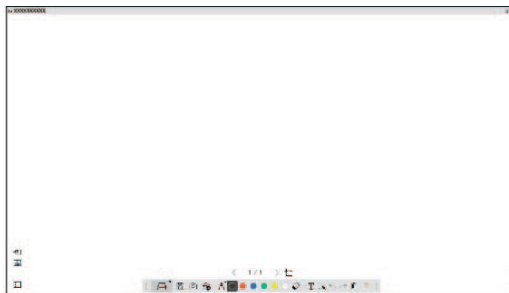


Starting Easy Interactive Tools

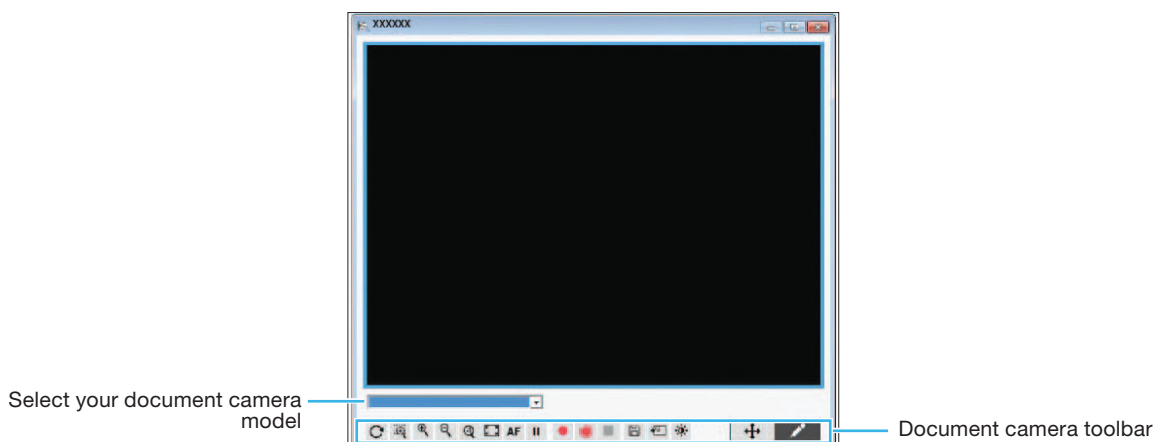
To start Easy Interactive Tools on your computer, do one of the following:


- **Windows:** Double-click the  Easy Interactive Tools icon on your desktop or do one of the following:
 - **Windows® 7:** Click  or **Start > All Programs** or **Programs > EPSON Projector > Easy Interactive Tools Ver.5.XX**.
 - **Windows 8/Windows 8.1:** Navigate to the **Apps** screen and select **Easy Interactive Tools Ver.5.XX**.
 - **Windows 10:** Click  > **All Apps > EPSON Projector > Easy Interactive Tools Ver.5.XX**.
- **Mac:** From the Applications folder, double-click **Easy Interactive Tools Ver.5.XX**.

The Easy Interactive Tools software starts. A plain window and toolbar open in the Whiteboard mode.



If you are using a document camera, click the  **Other tools** >  **Camera** icon on the toolbar. The Camera screen with document camera toolbar is displayed.*



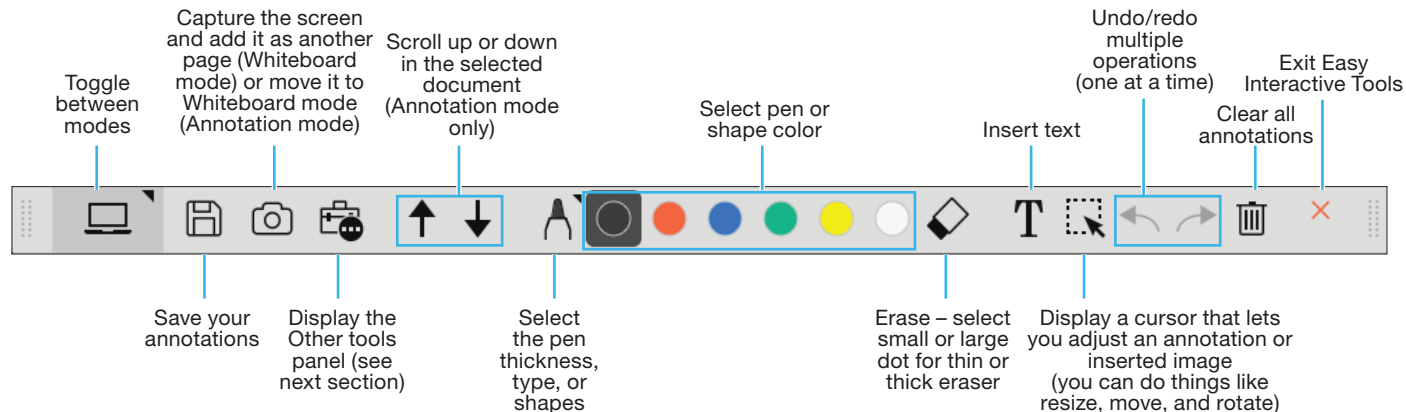
You can move the toolbar by clicking and dragging it to the desired location. To exit Easy Interactive Tools, select the  exit icon in the upper right corner of the toolbar.

*Connect the document camera to your computer via USB.

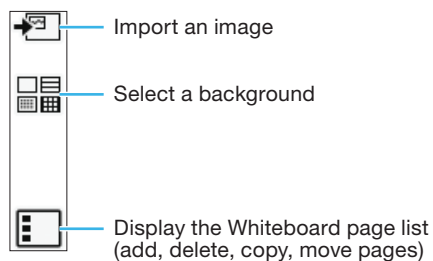
Using the Toolbar

The toolbar appears on the projected image (Annotation or Mouse mode) or on a blank surface, background image, or pattern (Whiteboard mode). You can write or draw with an interactive pen or your finger (if applicable) and capture, save, or print your pages. In Mouse mode, you can interact with your desktop to do things like open applications, access links, and operate scroll bars. You can perform the following functions on the toolbar. (If you are using a document camera, a toolbar is available on the Camera screen as well.)

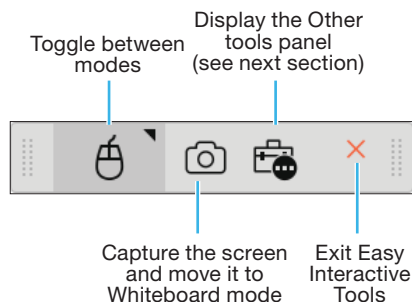
Whiteboard Mode/Annotation Mode




Additional Whiteboard Mode Tools



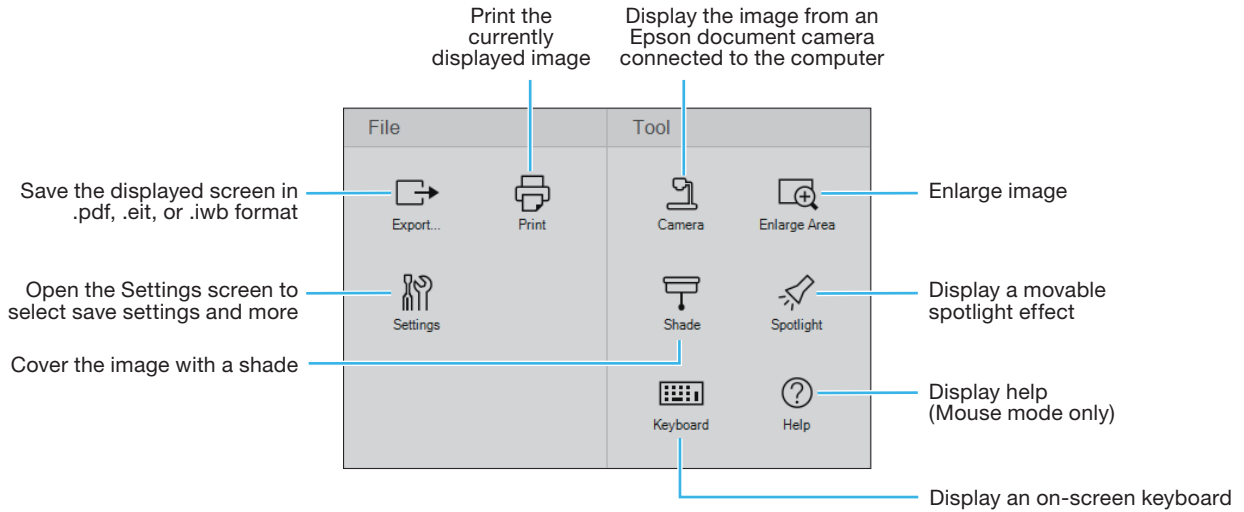
Mouse Mode



Other Tools

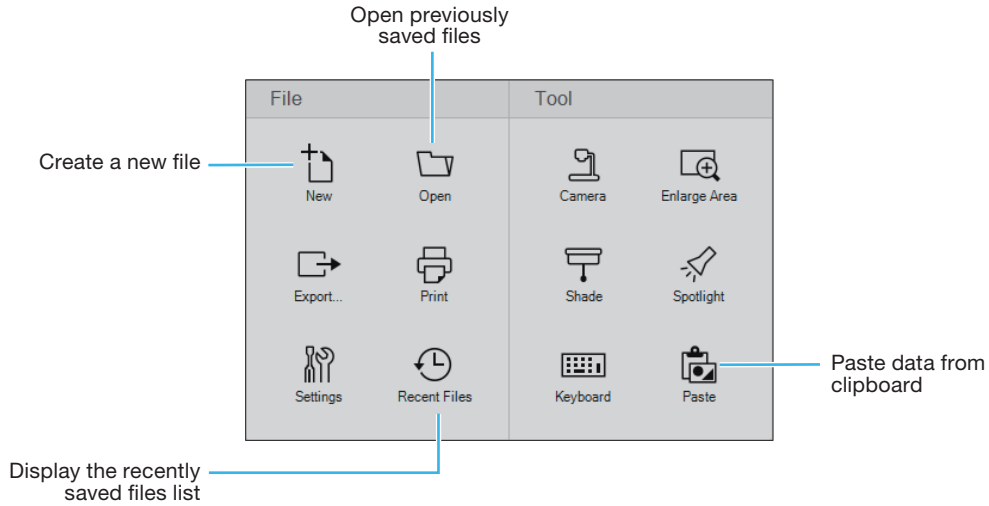
To display the tools shown below, select the  **Other tools** icon. You can print pages, display an image from a connected document camera, and select other tools and settings.

Annotation Mode/Mouse Mode





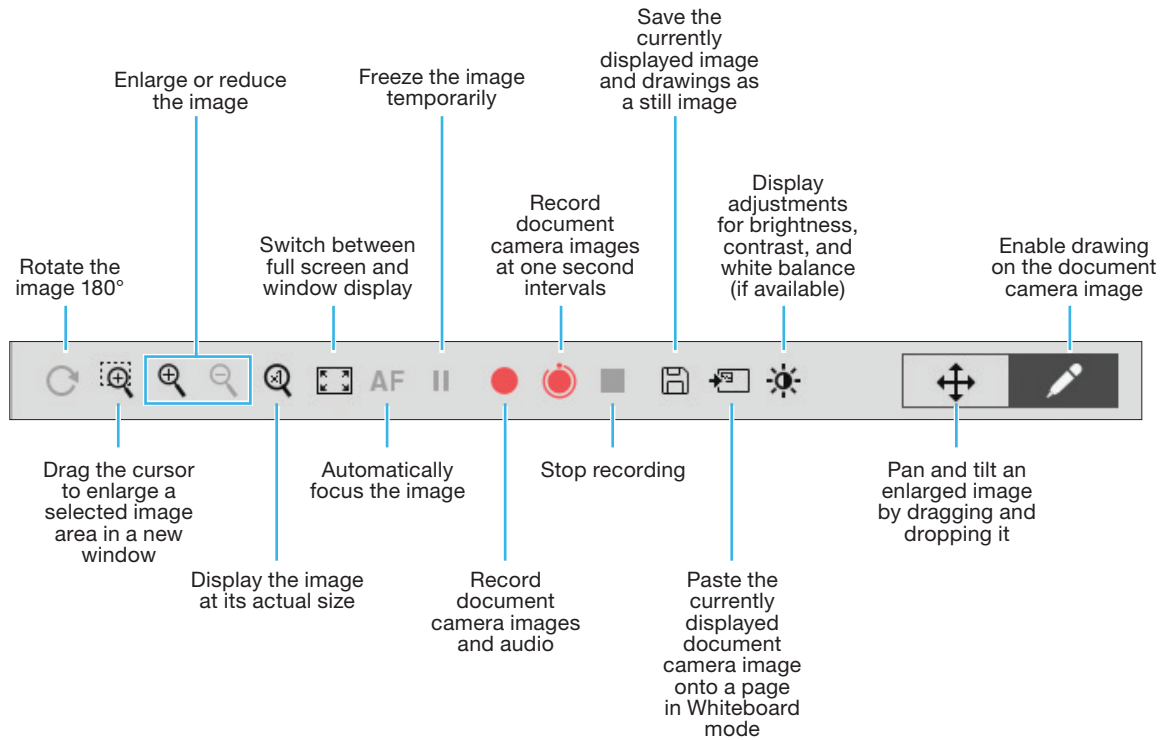
Whiteboard Mode

In Whiteboard mode, the following functions are available, in addition to or instead of those described above.






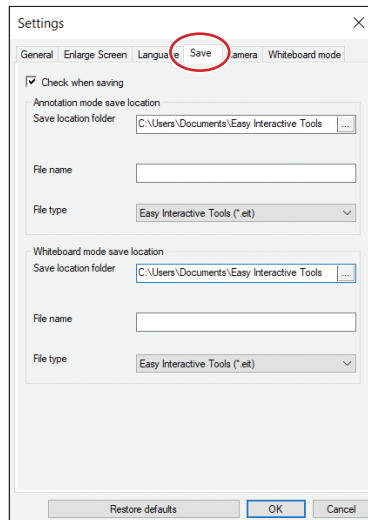
Document Camera Toolbar

When you select  **Other tools** >  **Camera** icon on the toolbar, the Camera screen and document camera toolbar are displayed. The following functions are available on the document camera toolbar.

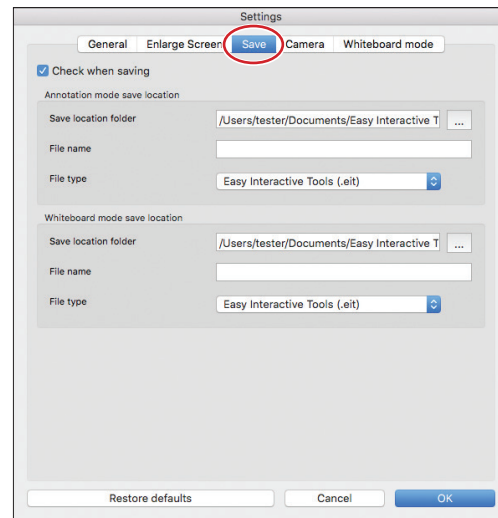


Saving Your Files

- To save your screen or pages as PDF, image, or interactive files in your Documents > Easy Interactive Tools folder, simply select the  **Save** tool icon on the toolbar. Easy Interactive Tools names your file automatically (.eit is the default file type selection).
- To select other locations and formats for saving, follow these steps:
 - 1 Select the  **Other tools** icon on the toolbar, select the  **Settings** icon, then select the **Save** tab as shown below.



Windows



Mac

- 2 Select the location, file name, and file type. You can save all your screens and pages as one PDF file.
Note: If you plan to edit a file, save it as an .eit file.
- 3 If you want to select different settings each time you save, select the **Check when saving** checkbox.
- 4 Select **OK** to close the Settings window.

EPSON is a registered trademark and EPSON Exceed Your Vision is a registered logomark of Seiko Epson Corporation.

Windows is a registered trademark of Microsoft Corporation in the United States and/or other countries.

Mac is a trademark of Apple Inc., registered in the U.S. and other countries.

General Notice: Other product names used herein are for identification purposes only and may be trademarks of their respective owners. Epson disclaims any and all rights in those marks.

This information is subject to change without notice.

© 2020 Epson America, Inc., 3/20