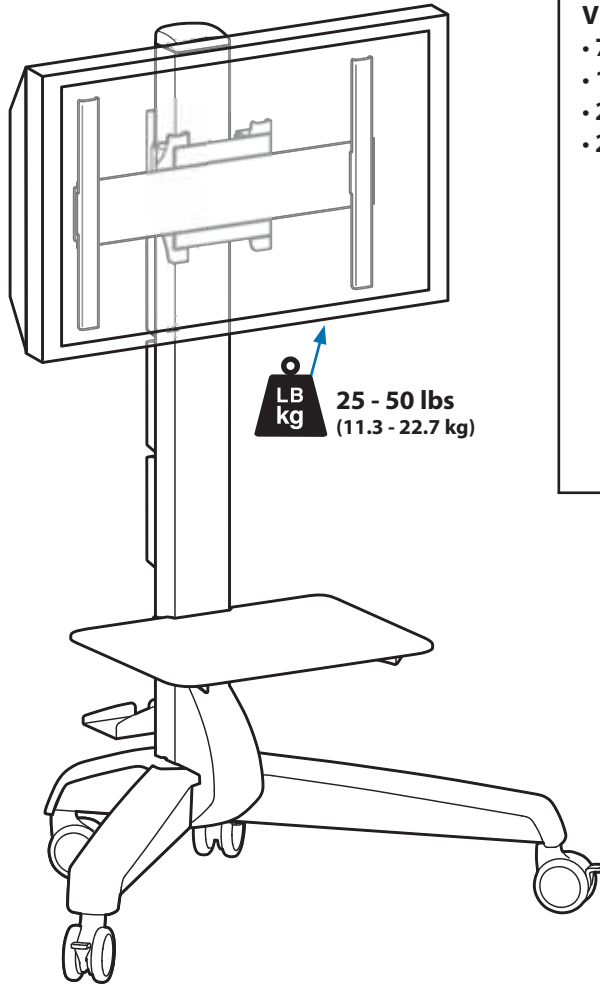


## Neo-Flex Mobile Media Center, LD with 90° Portrait/Landscape rotation

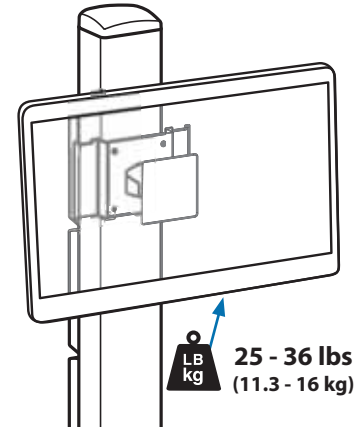
### Holds displays with the following VESA mounting hole pattern:

- 100 x 100 mm
- 200 x 200 mm
- 200 x 300 mm
- 300 x 200 mm
- 300 x 300 mm
- 400 x 200 mm
- 400 x 300 mm
- 500 x 200 mm
- 500 x 300 mm
- 600 x 200 mm
- 600 x 300 mm
- 200 x 400 mm
- 300 x 400 mm
- 400 x 400 mm
- 500 x 400 mm
- 600 x 400 mm

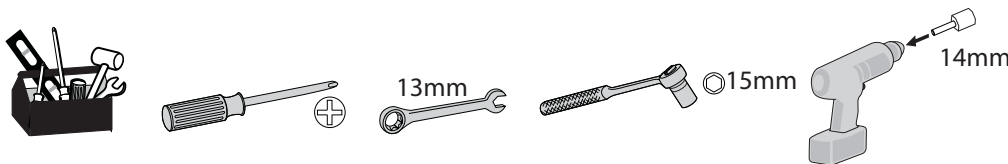


### Holds displays with the following VESA mounting hole pattern:

- 75 x 75 mm
- 100 x 100 mm
- 200 x 100 mm
- 200 x 200 mm



## Tools Needed



For the latest User Installation Guide please visit: [www.ergotron.com](http://www.ergotron.com)



User's Guide - English  
 Guía del usuario - Español  
 Manuel de l'utilisateur - Français  
 Gebruikersgids - Deutsch  
 Benutzerhandbuch - Nederlands  
 Guida per l'utente - Italiano  
 Användarhandbok - svenska  
 ユーザーガイド : 日本語  
 用户指南 : 汉语

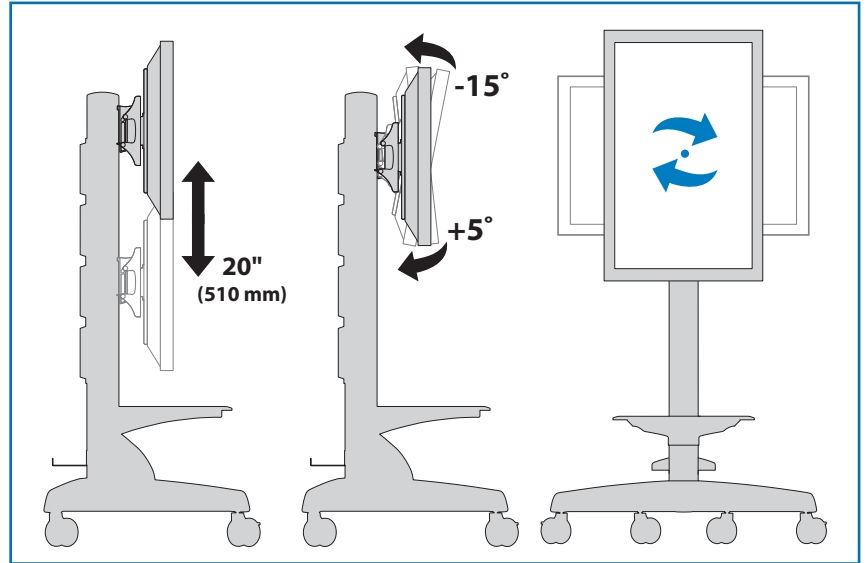
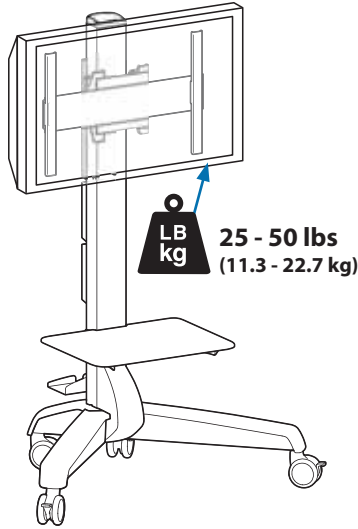
# Touchboards

205 Westwood Ave, Long Branch, NJ 07740  
 Phone: 866-94 BOARDS (26273) / (732)-222-1511  
 Fax: (732)-222-7088 | E-mail: [sales@touchboards.com](mailto:sales@touchboards.com)

# Features & Specifications

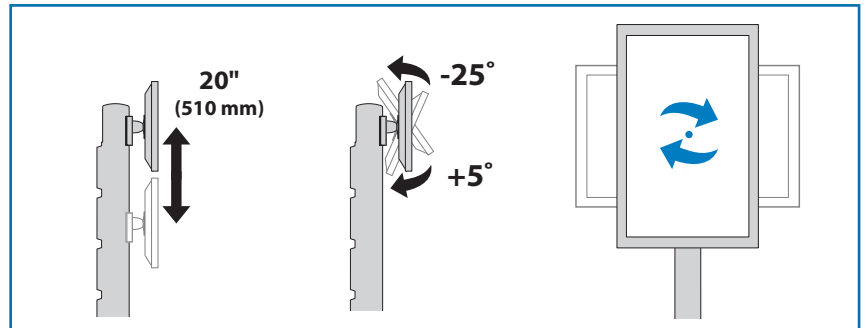
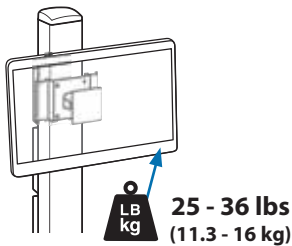
Holds displays with the following VESA mounting hole pattern:

- 100 x 100 mm
- 200 x 200 mm
- 200 x 300 mm
- 300 x 200 mm
- 300 x 300 mm
- 400 x 200 mm
- 400 x 300 mm
- 500 x 200 mm
- 500 x 300 mm
- 600 x 200 mm
- 600 x 300 mm
- 200 x 400 mm
- 300 x 400 mm
- 400 x 400 mm
- 500 x 400 mm
- 600 x 400 mm

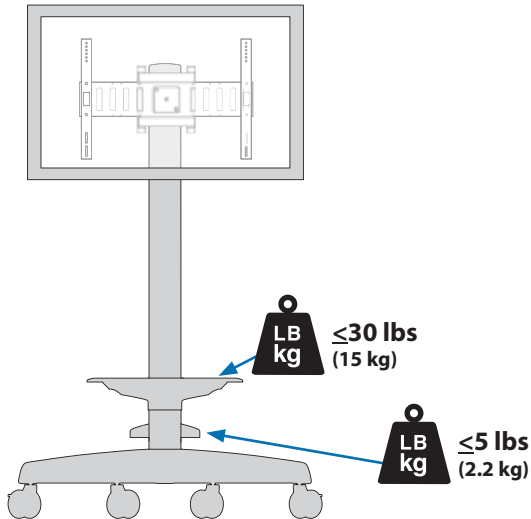


Holds displays with the following VESA mounting hole pattern:

- 75 x 75 mm
- 100 x 100 mm
- 200 x 100 mm
- 200 x 200 mm



ENGLISH



CAUTION: DO NOT EXCEED MAXIMUM LISTED WEIGHT CAPACITY. SERIOUS INJURY OR PROPERTY DAMAGE MAY OCCUR!

# Safety



Important! You will need to adjust this product after installation is complete. Make sure all your equipment is properly installed on the product before attempting adjustments. This product should move smoothly and easily through the full range of motion and stay where you set it. If movements are too easy or difficult or if product does not stay in desired positions, follow the adjustment instructions to create smooth and easy movements. Depending on your product and the adjustment, it may take many turns to notice a difference. Any time equipment is added or removed from this product, resulting in a change in the weight of the mounted load, you should repeat these adjustment steps to ensure safe and optimum operation.

## WARNING

### STORED ENERGY HAZARD! DO NOT OPEN TOWER OR REMOVE SAFETY GUARD!

A primary mechanism within the tower is under tension and can be hazardous to people exposed to it under certain extreme conditions. DO NOT open the tower; DO NOT attempt to service the cart/stand. DO NOT remove safety guards or labels designed to protect or inform of possible hazards. Only Ergotron-approved installers may service or otherwise modify cart/stand. Failure to heed this Warning may result in serious Personal Injury and Damage both to the cart/stand and equipment.



## WARNING

DO NOT load the Cart/Stand past maximum weight capacity. DO NOT mount a display larger than the recommended size. Failure to comply with warning may result in Cart/Stand instability leading to equipment damage or personal injury.



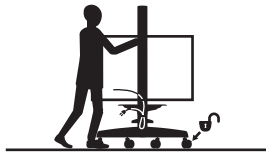
## WARNING



### TIPPING HAZARD!

DO NOT allow children on Cart / Stand. DO NOT route electric cords or equipment cables within reach of children. LOCK CASTERS when Cart is stationary. Failure to comply with this warning may result in Cart / Stand instability leading to equipment damage or personal injury.

## CAUTION



### TIPPING HAZARD!

DO NOT move Cart with Display in highest position. DO NOT push Cart from front or back of Tower. DO NOT move Cart over cords or uneven, dirty, soft or sloping surfaces. DO NOT move Cart by pushing on Display. Failure to comply with this caution may result in Cart instability leading to equipment damage or personal injury.

#### TO MOVE CART

1. Push Display down to lowest position on Cart.
2. Disconnect power cord and attach to Tower.
3. Unlock casters; point casters in direction of travel.
4. Push Cart from side with hands on Tower.

822-025-00



### WARNING

Stored Energy Hazard: The lift mechanism in the tower is under tension and will move up rapidly, on its own, as soon as attached equipment is removed. For this reason, DO NOT remove equipment or make adjustments to lift tension unless the front assembly has been moved to the highest position on the tower! Failure to follow this instruction may result in serious personal injury and/or equipment damage!

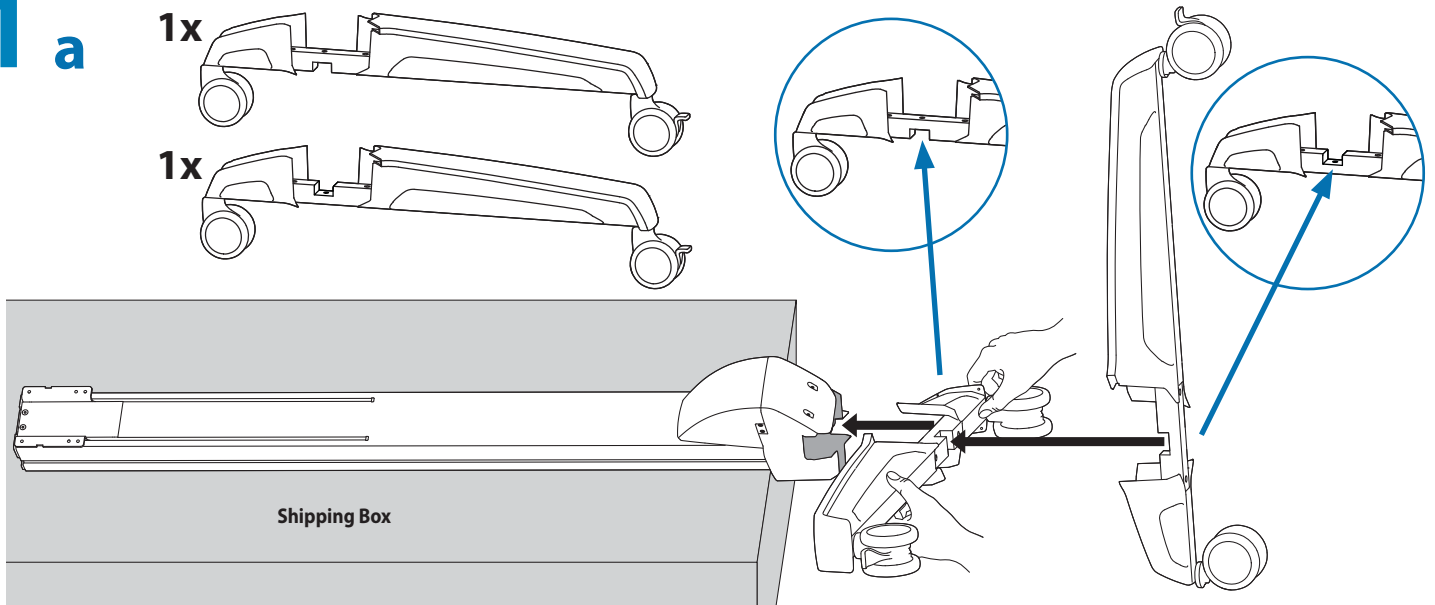
# Components



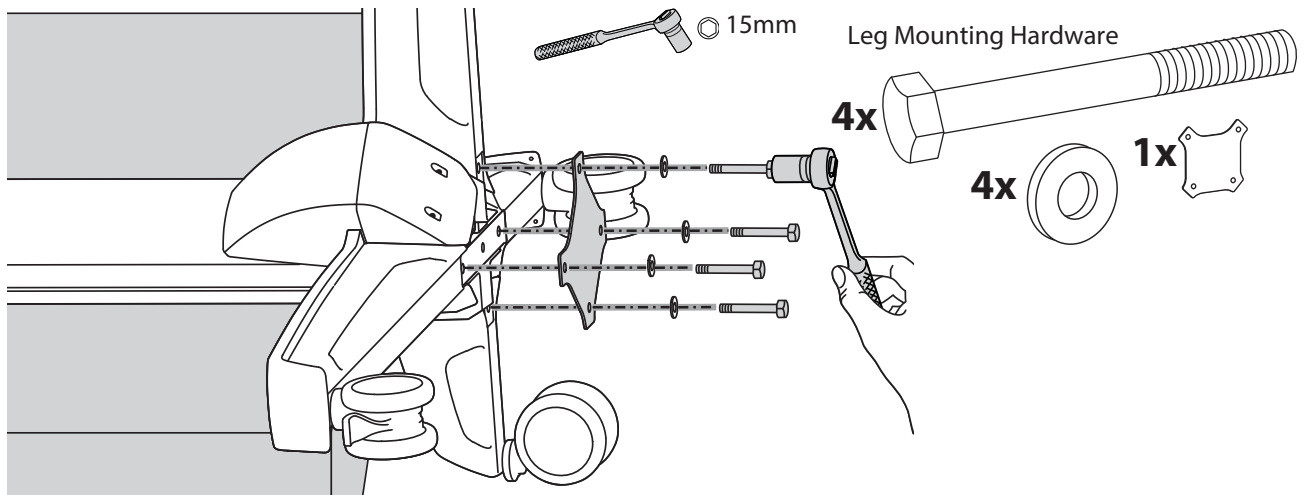
	A	B
1		<b>Leg Mounting Hardware</b> <b>4x</b> M10 x 60mm <b>4x</b>
2		<b>Leg Cover Mounting Screws</b> <b>8x</b> M3.5 x 6mm
3		<b>Shelf Mounting Hardware</b> <b>8x</b> <b>4x</b> M3 x 39mm <b>2x</b>
4		<b>TM Mounting Hardware</b> <b>4x</b> M6x8mm <b>2x</b> <b>4x</b> <b>4x</b> M8 x 14mm <b>1x</b> <b>2x</b> M4 x 16mm
5		<b>400mm Extension Hardware</b> <b>4x</b> <b>4x</b> M5 x 16mm
6		<b>Large Display Cart Hardware</b> <b>4x</b> M6x20mm <b>4x</b> M6x45mm <b>4x</b> M8x25mm <b>4x</b> M8x50mm
7		<b>100x100mm VESA Plate Hardware</b> <b>4x</b> M5 x 10mm
8		<b>Power Strip Hardware</b> <b>2x</b> <b>2x</b> M5x9mm
9		<b>1x</b> <b>1x</b> <b>4x</b> M4 x 12mm <b>4x</b> M6 x 12mm <b>1x</b> M5 x 8mm <b>4x</b> M5 x 7mm <b>4x</b> M5 x 20mm
10		<b>Top Cap Hardware</b> <b>1x</b> <b>1x</b> M5x8mm <b>4x</b> M6 x 8mm <b>4x</b> M5 x 12mm <b>4x</b> M8M5 Converter

ENGLISH

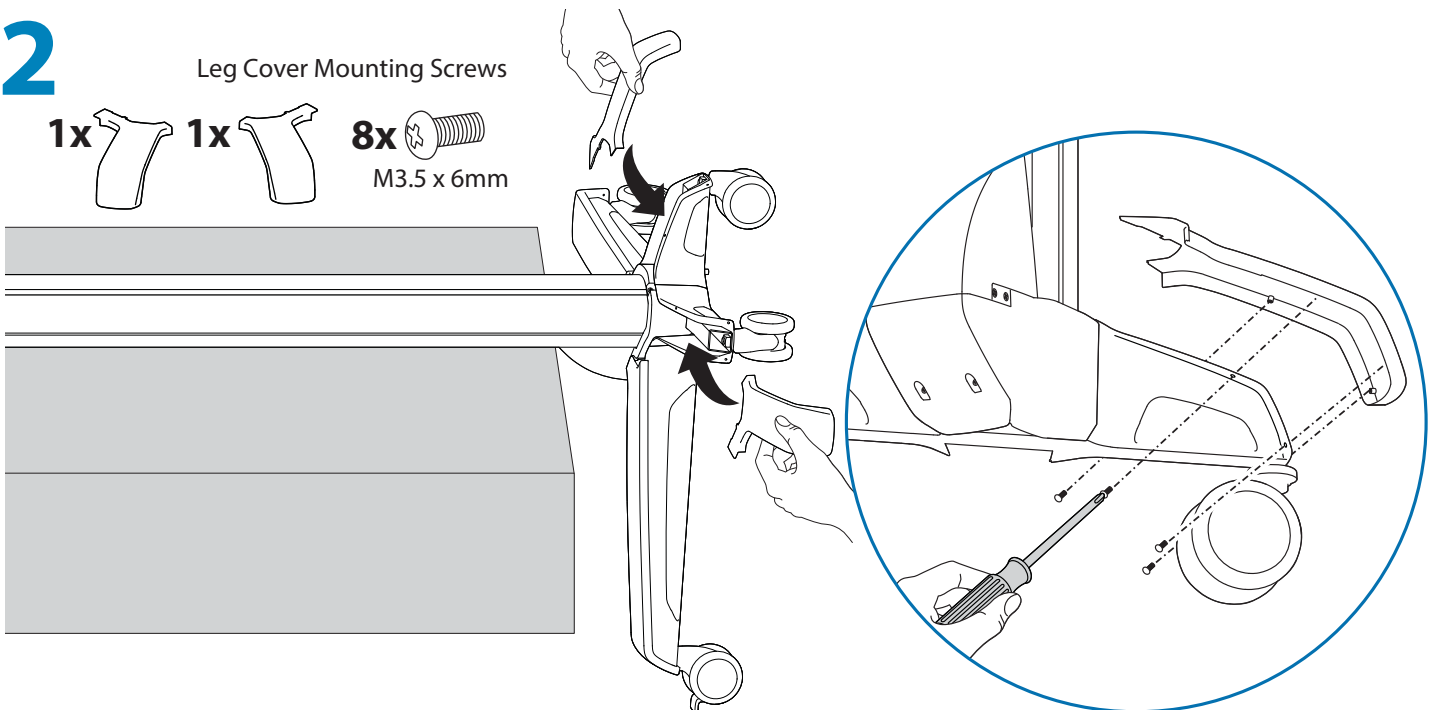
# 1 a



# b



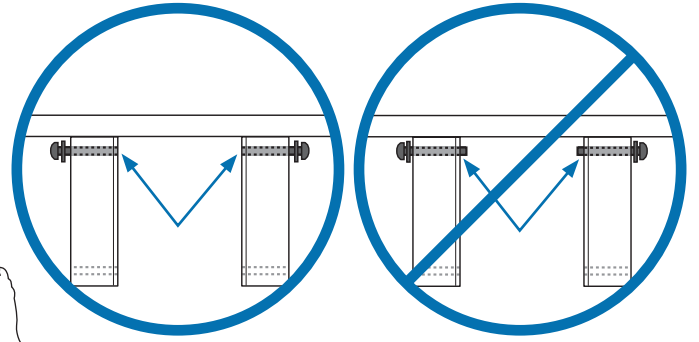
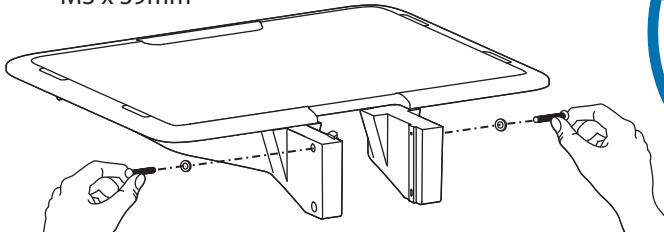
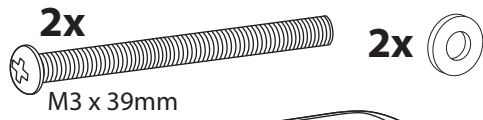
# 2



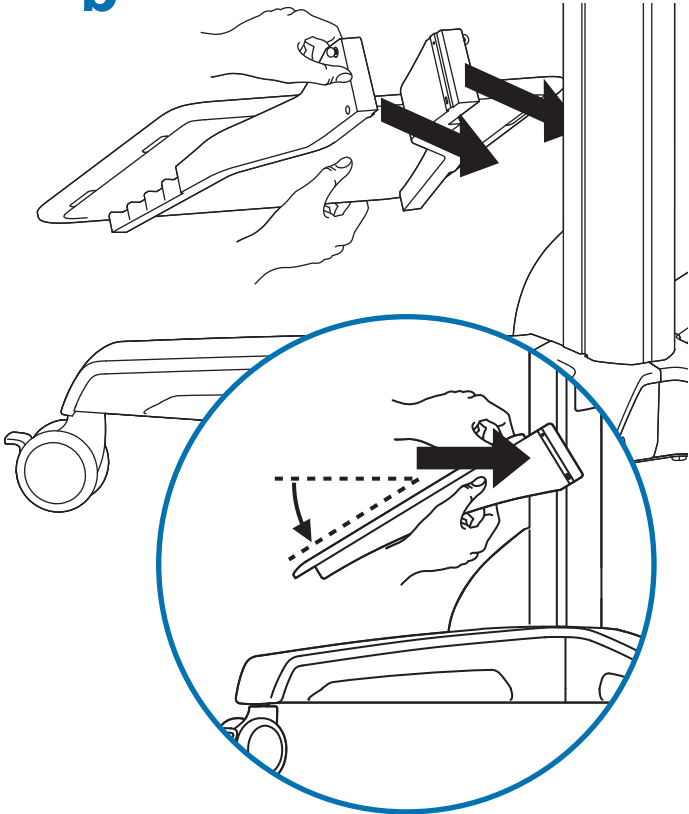
**CAUTION: DO NOT** overtighten fasteners. Overtightening may cause damage to your equipment.

**3 a**

Shelf Mounting Hardware

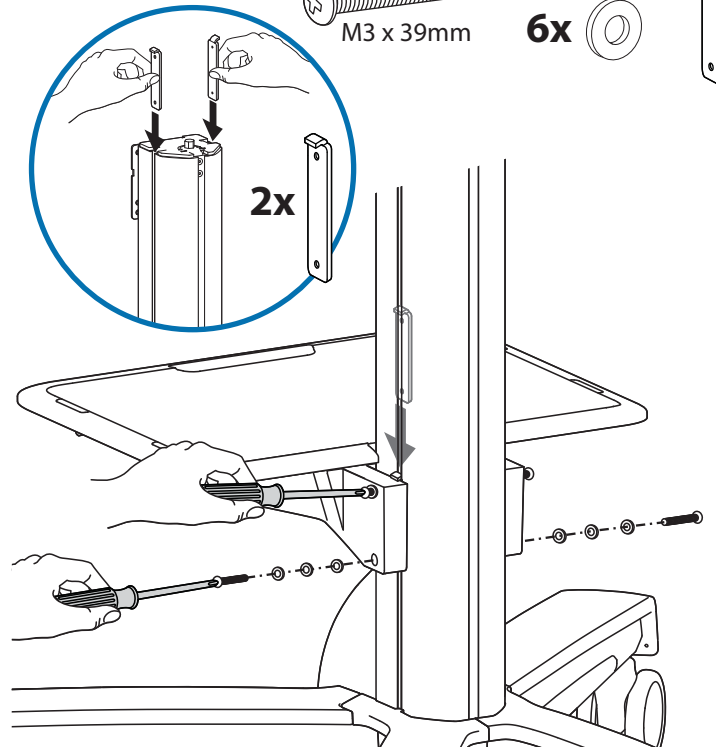
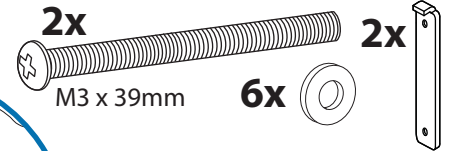


**b**

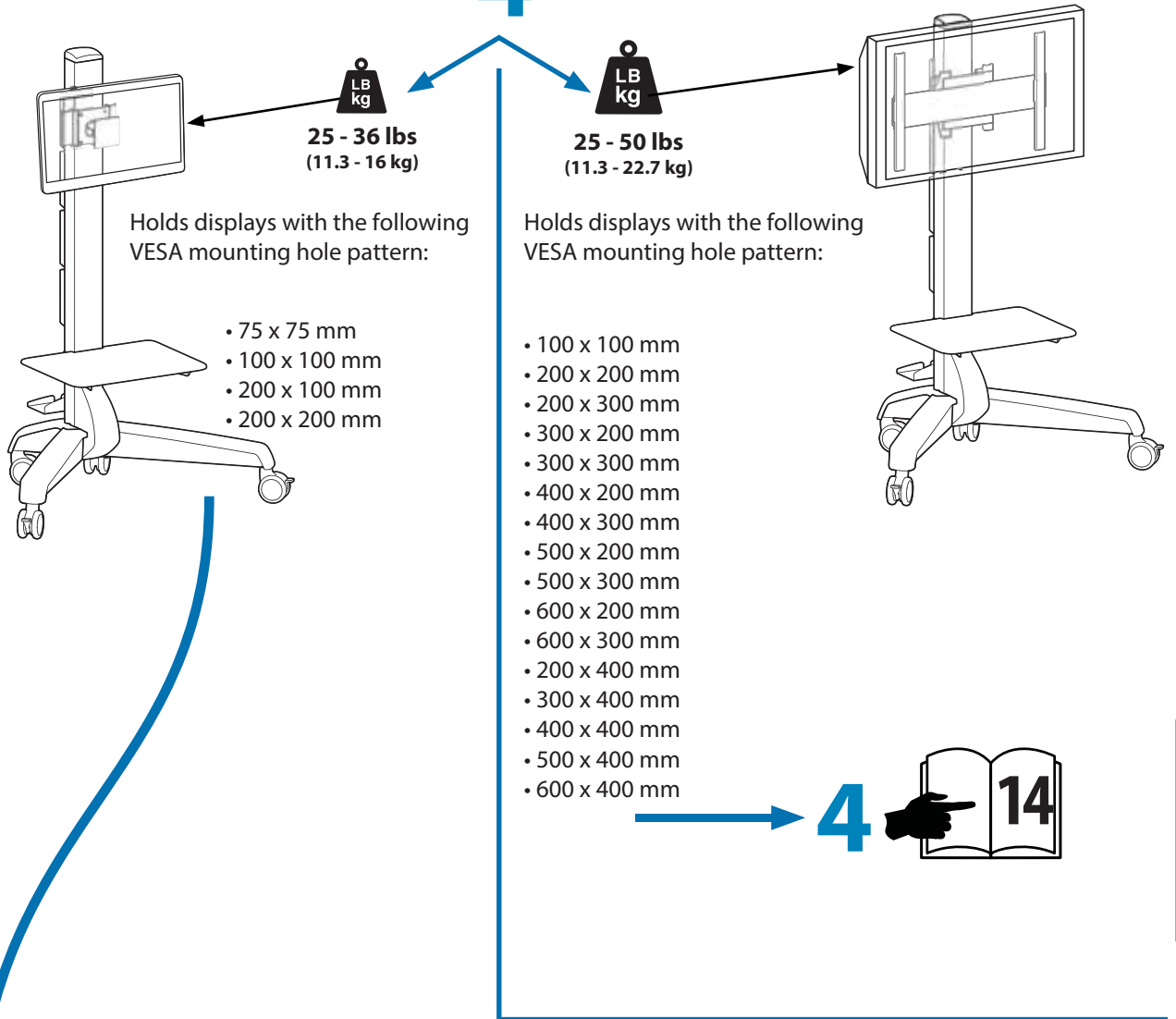


**c**

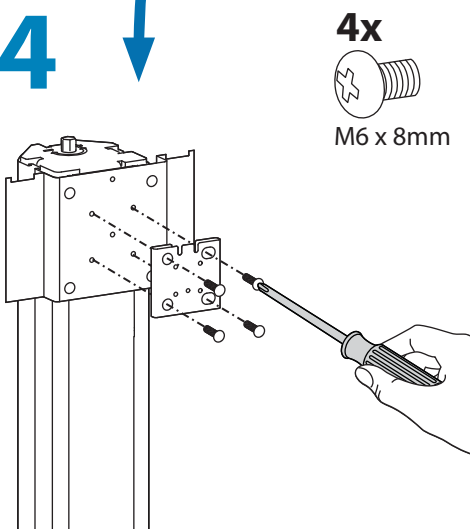
Shelf Mounting Hardware



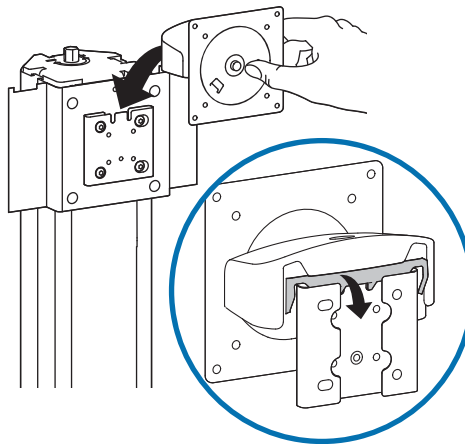
# 4



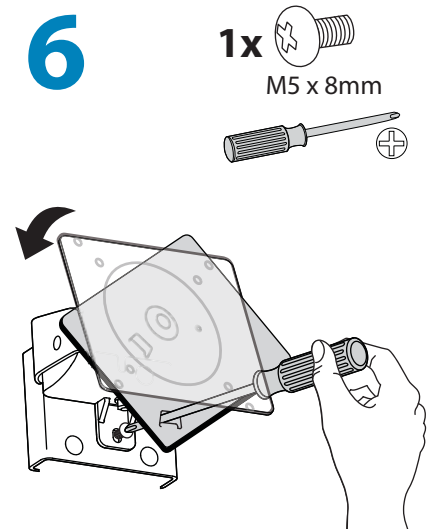
# 4

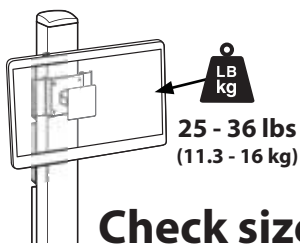


# 5

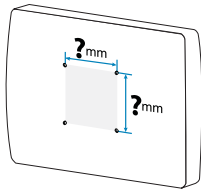


# 6





7

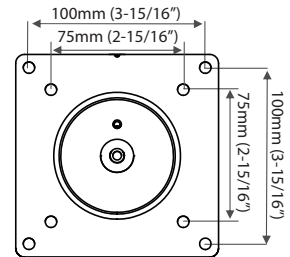
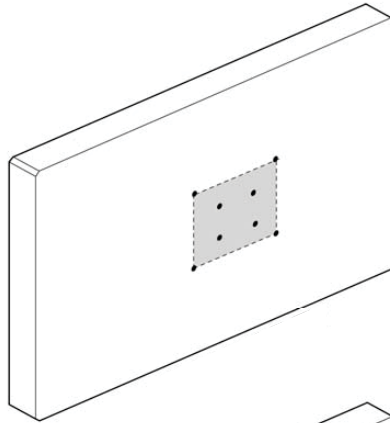


## Check size of TV/Monitor hole pattern

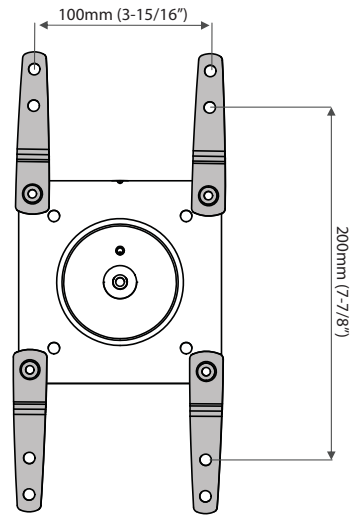
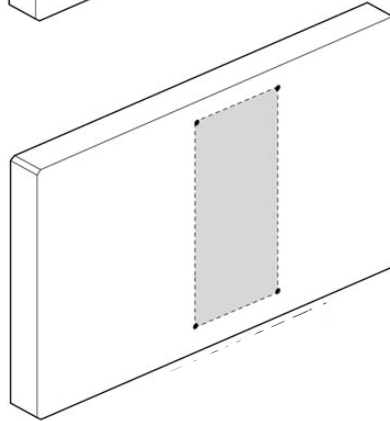
## TV/Monitor Hole Pattern Sizes

## VESA Adapter Configurations

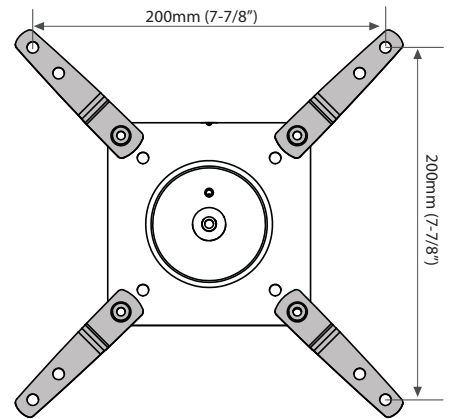
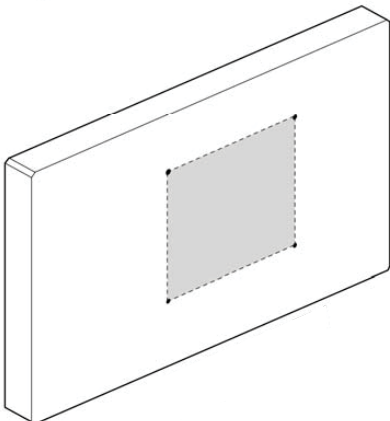
**A** 75x75mm  
100x100mm



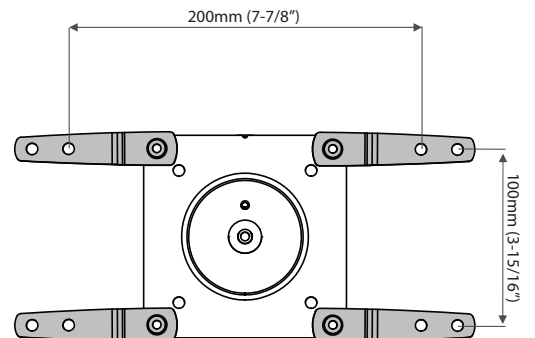
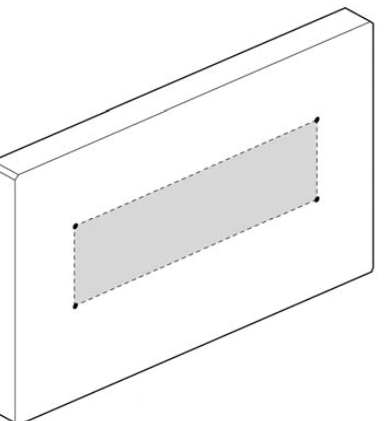
**B** 100x200mm



**C** 200x200mm



**D** 200x100mm

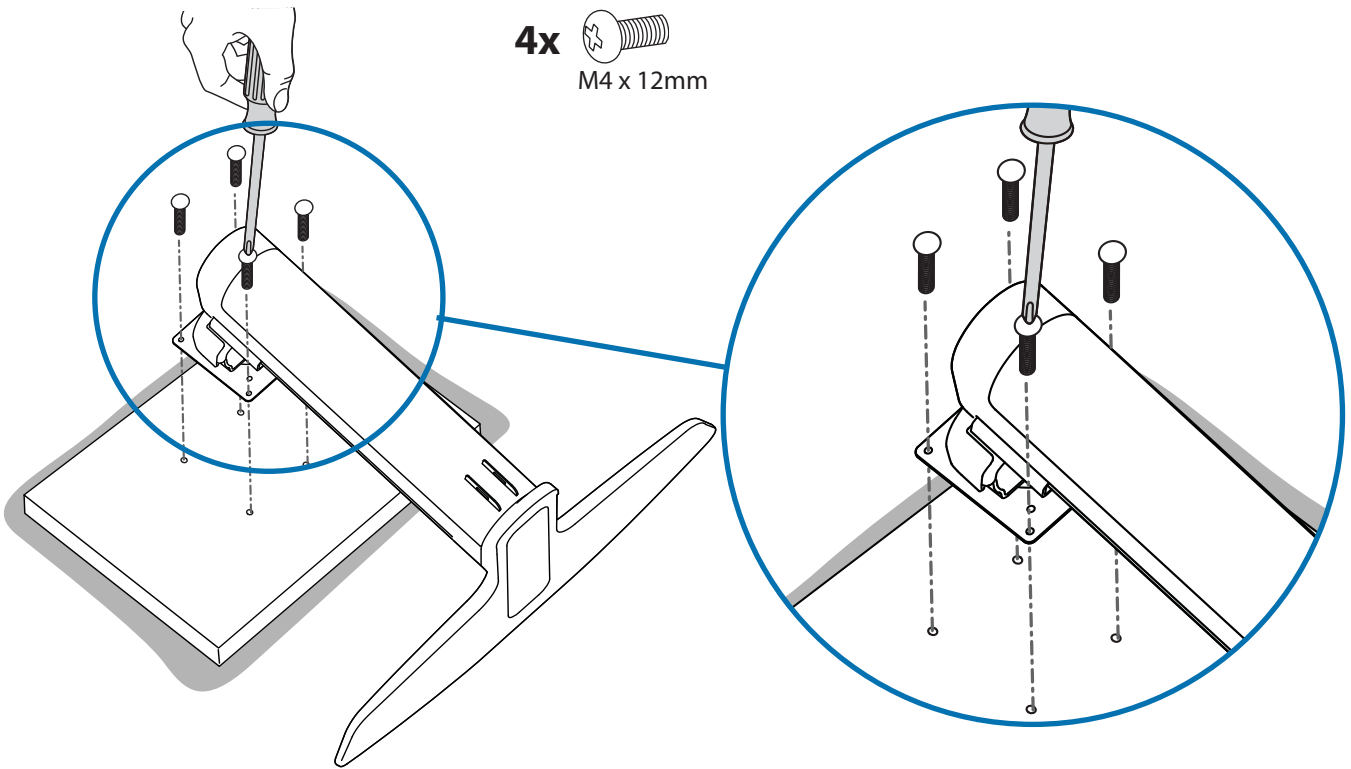
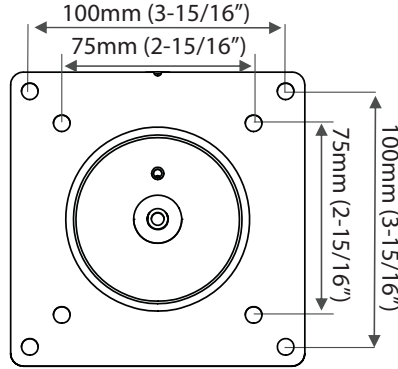
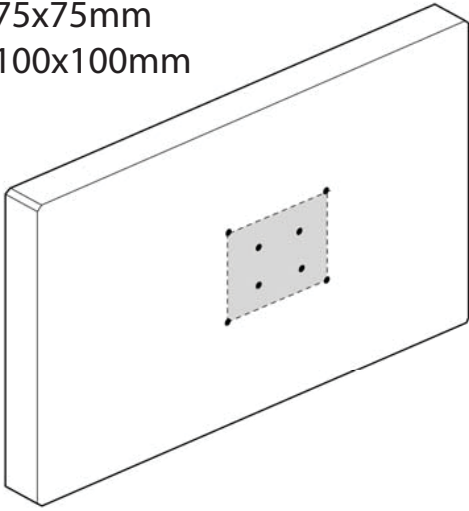




# 7 Mount Type A TV/Monitor to Arm

## A

75x75mm  
100x100mm



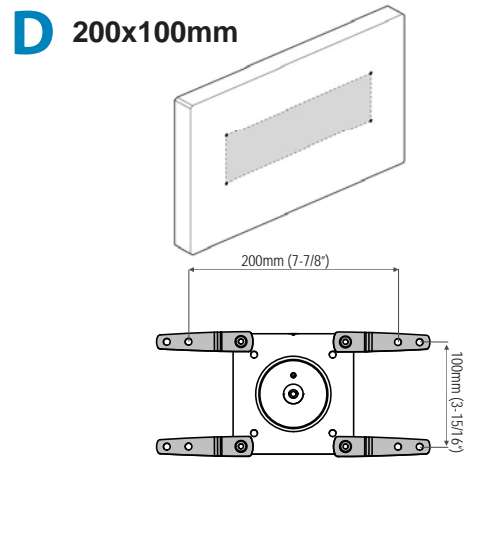
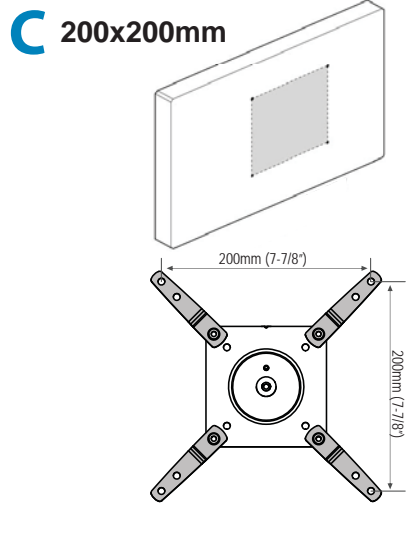
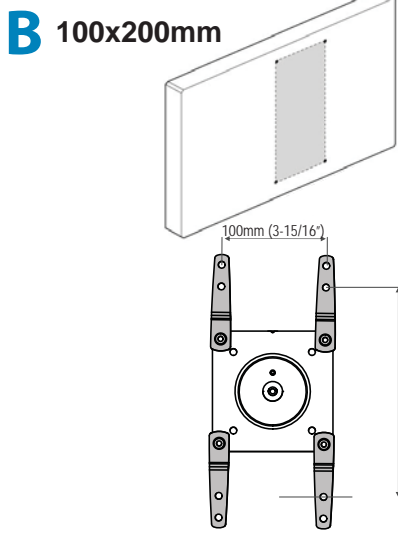
4x  
M4 x 12mm

ENGLISH

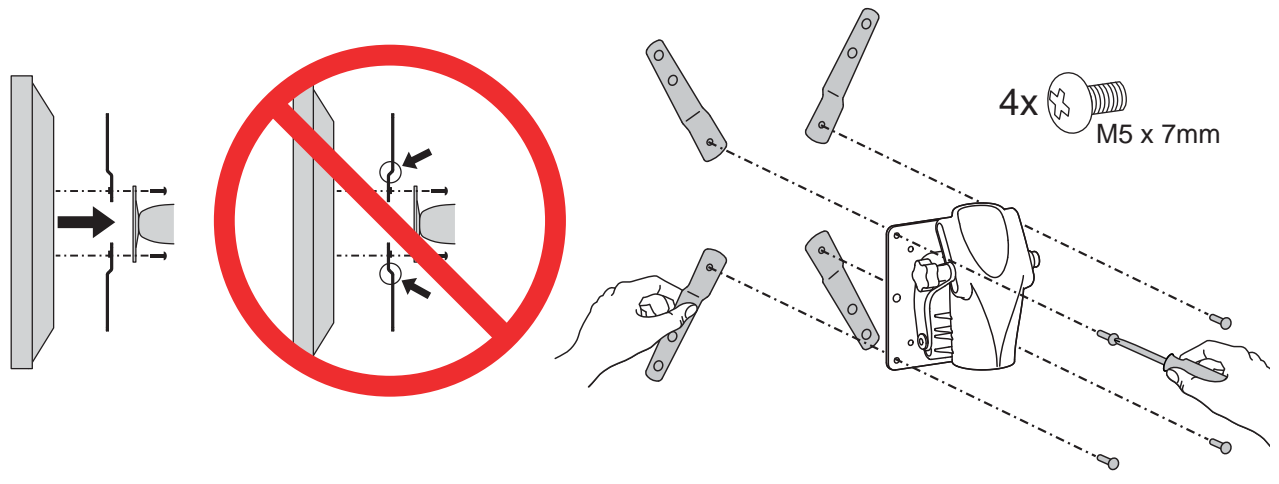
# Touchboards

205 Westwood Ave, Long Branch, NJ 07740  
Phone: 866-94 BOARDS (26273) / (732)-222-1511  
Fax: (732)-222-7088 | E-mail: sales@touchboards.com



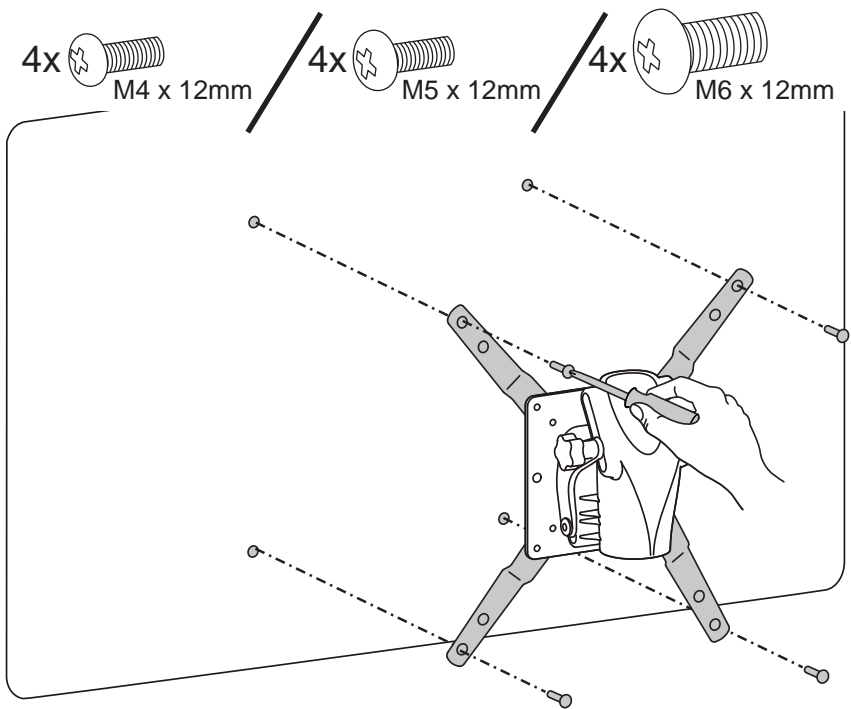


**7a** Mount VESA Adapters to Arm based on TV/Monitor hole pattern size (B, C, or D).



**7b** Mount Type B, C, or D TV/Monitor to Arm

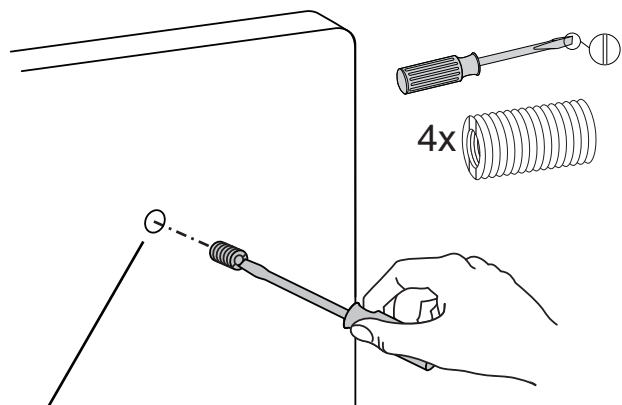
**NOTE:** To reduce M8 holes for use with M5 screws, or if you have a model with Samsung holder rings, follow the **M8M5 KIT** instructions on the next page.



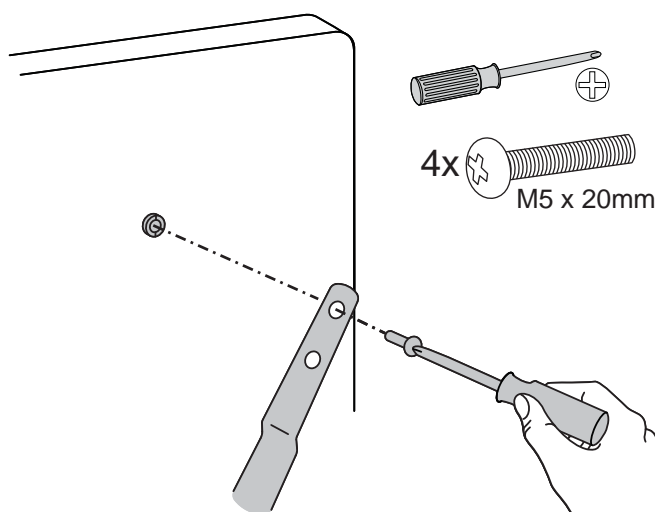
# M8M5 KIT Instructions

**NOTE:** Follow this step only if your TV/monitor has M8 holes which need to be reduced to M5.

Install M8M5 reducer bushing to TV/Monitor and use M5 x 20 mm monitor screws to secure.

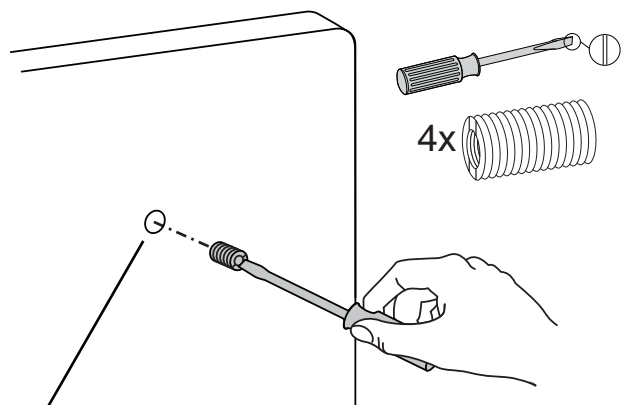


TV/Monitor Mounting  
M8 size hole

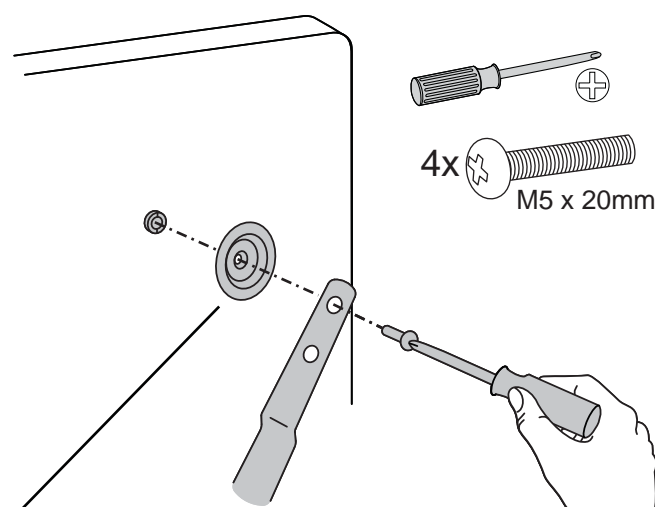


**NOTE:** Follow this step only for Samsung models using the holder ring.

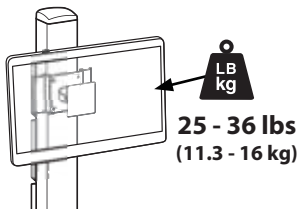
Install M8M5 reducer bushing to TV/Monitor then use M5 x 20 mm monitor screws and Samsung holder ring to secure.



TV/Monitor Mounting  
M8 size hole



Holder Ring  
(Not included \*Samsung Only)



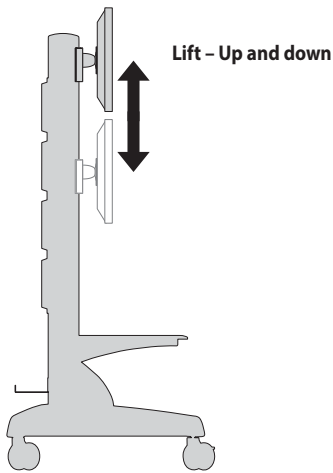
# 8



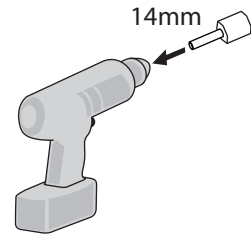
## Adjustment Step

Important! You will need to adjust this product after installation is complete. Make sure all your equipment is properly installed on the product before attempting adjustments. This product should move smoothly and easily through the full range of motion and stay where you set it. If movements are too easy or difficult or if product does not stay in desired positions, follow the adjustment instructions to create smooth and easy movements. Depending on your product and the adjustment, it may take many turns to notice a difference. Any time equipment is added or removed from this product, resulting in a change in the weight of the mounted load, you should repeat these adjustment steps to ensure safe and optimum operation.

**a**



Lift - Up and down



14mm



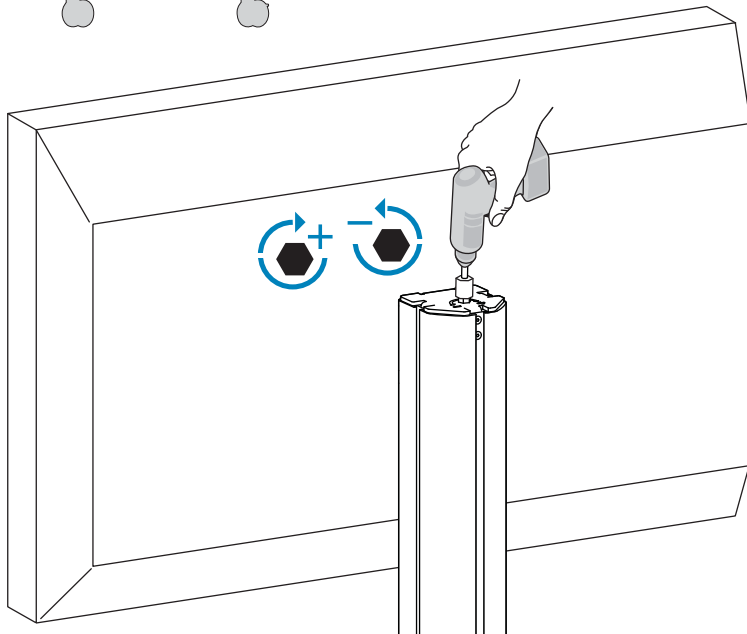
### Increase Lift Strength

If the mounted weight is too heavy or this product does not stay up when raised, then you'll need to increase Lift Strength:

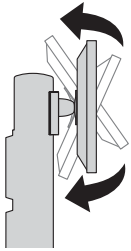


### Decrease Lift Strength

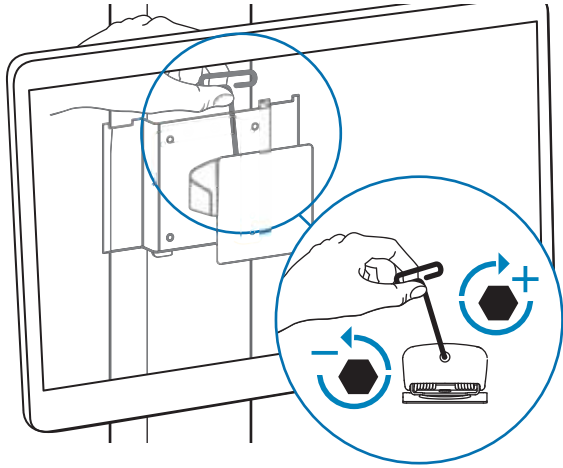
If the mounted weight is too light or this product does not stay down when lowered, then you'll need to decrease Lift Strength:



**b**



Tilt - Forward and Backward



**CAUTION!** The bottom nut will turn during adjustment of the top nut; DO NOT apply any tool to the bottom nut. Serious damage to the Pivot may occur if these instructions are not followed.

+



Increase Friction

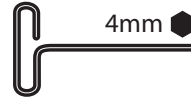
If this product moves too easily, then you'll need to increase friction:

-



Decrease Friction

If this product is too difficult to move, then you'll need to decrease friction:



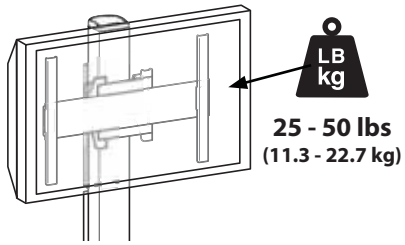
4mm

**9**



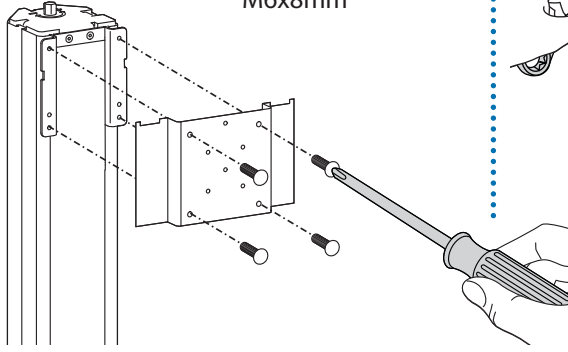
**10**





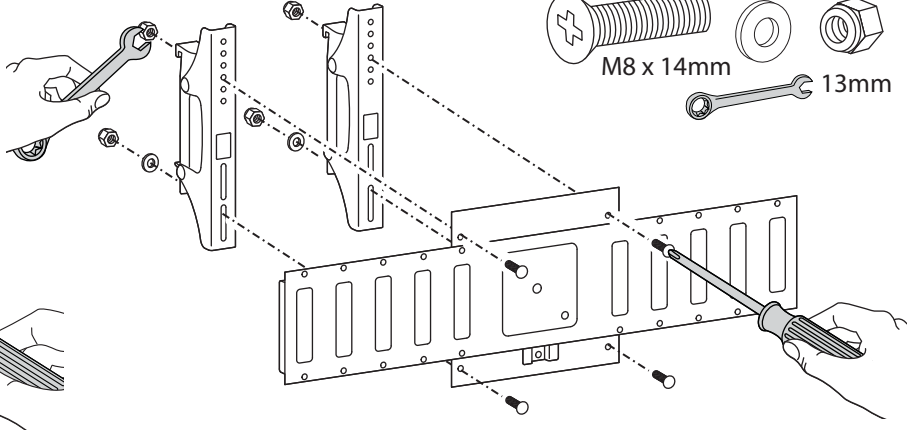
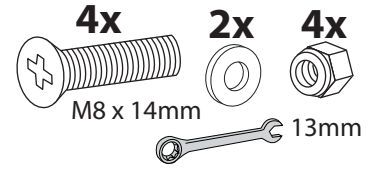
**4 a**

TM Mounting Hardware

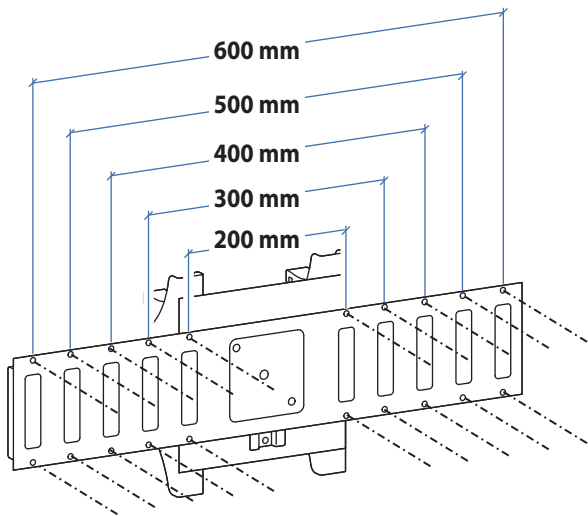
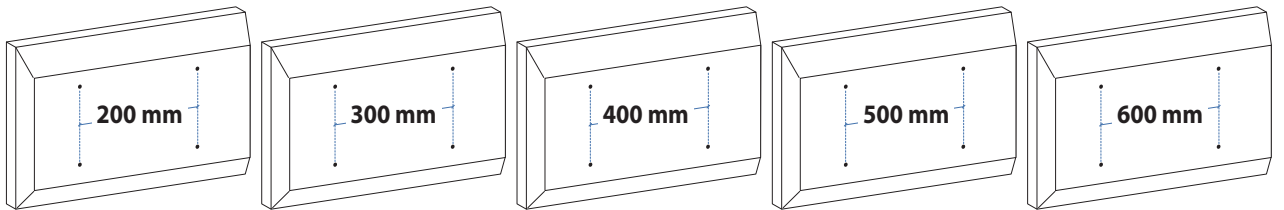
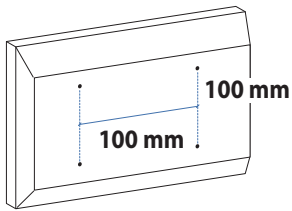


**b**

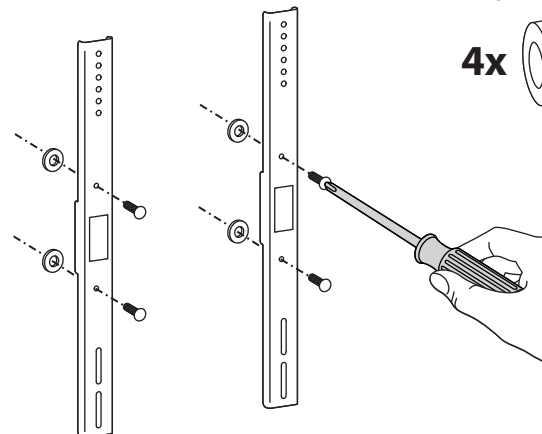
TM Mounting Hardware

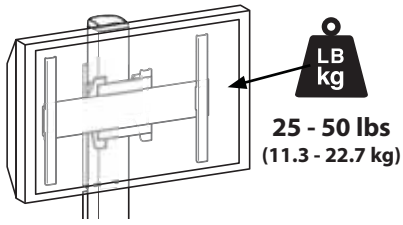


**5**



400mm Extension Hardware

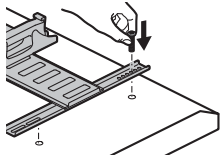




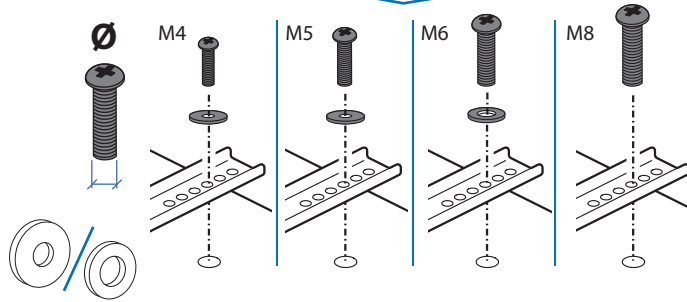
# 6 FIND APPROPRIATE FASTENERS FOR YOUR DISPLAY:

## Large Display Cart Hardware

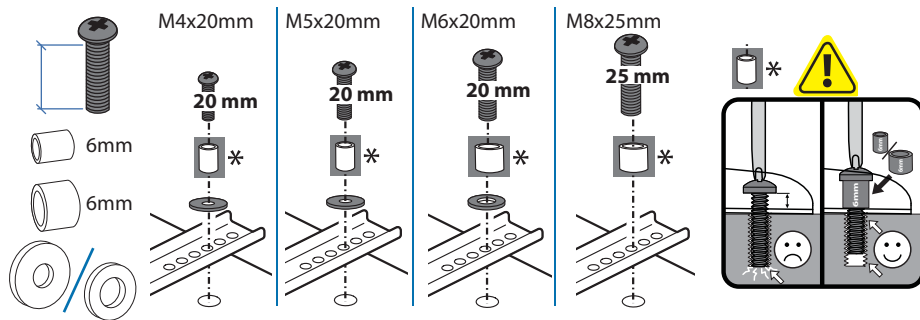
- |                   |                                    |                                   |
|-------------------|------------------------------------|-----------------------------------|
| <b>4x</b> M6x20mm | <b>4x</b> M4x20mm                  | <b>4x</b> 5.1(ID) x 10(OD) x 6mm  |
| <b>4x</b> M6x45mm | <b>4x</b> M4x40mm                  | <b>4x</b> 8.1(ID) x 16(OD) x 6mm  |
| <b>4x</b> M8x25mm | <b>4x</b> M5x20mm                  | <b>4x</b> 5.1(ID) x 10(OD) x 18mm |
| <b>4x</b> M8x50mm | <b>4x</b> M5x40mm                  | <b>4x</b> 8.1(ID) x 16(OD) x 24mm |
|                   | <b>8x</b> 5.3(ID) x 16(OD) x 1.0mm | <b>4x</b> 5.1(ID) x 10(OD) x 12mm |
|                   | <b>4x</b> 6.3(ID) x 14(OD) x 1.0mm | <b>4x</b> 8.1(ID) x 16(OD) x 12mm |



### Screw Diameter



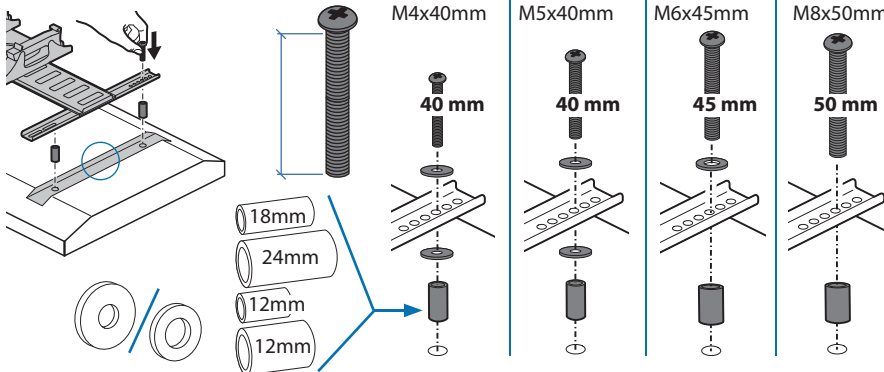
### Screw Length

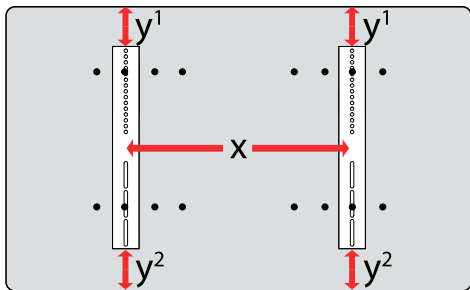
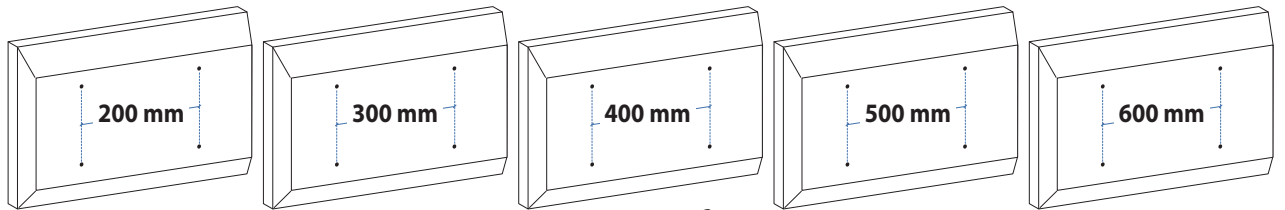
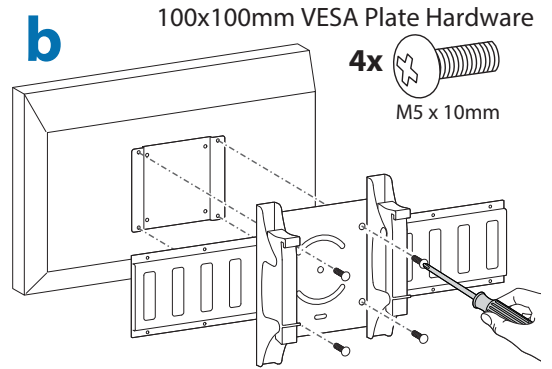
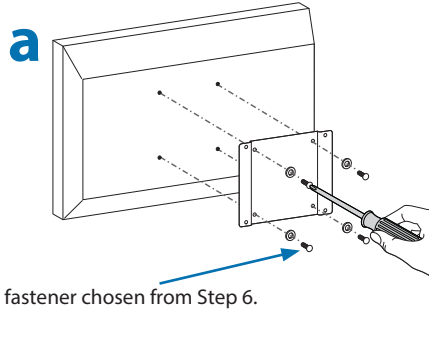
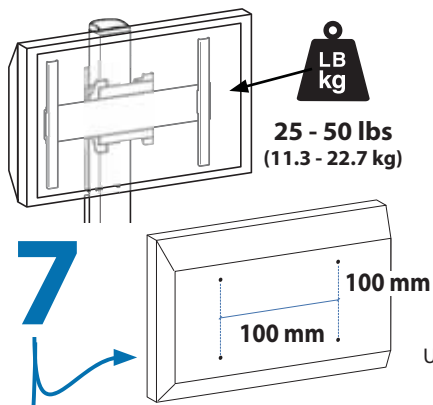


**IMPORTANT:** To ensure screws have the minimum thread engagement in the display, tighten screws with at least six, full, 360° revolutions.

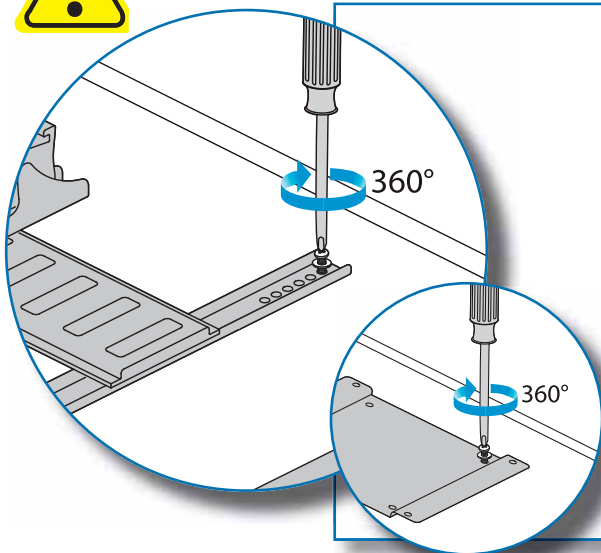
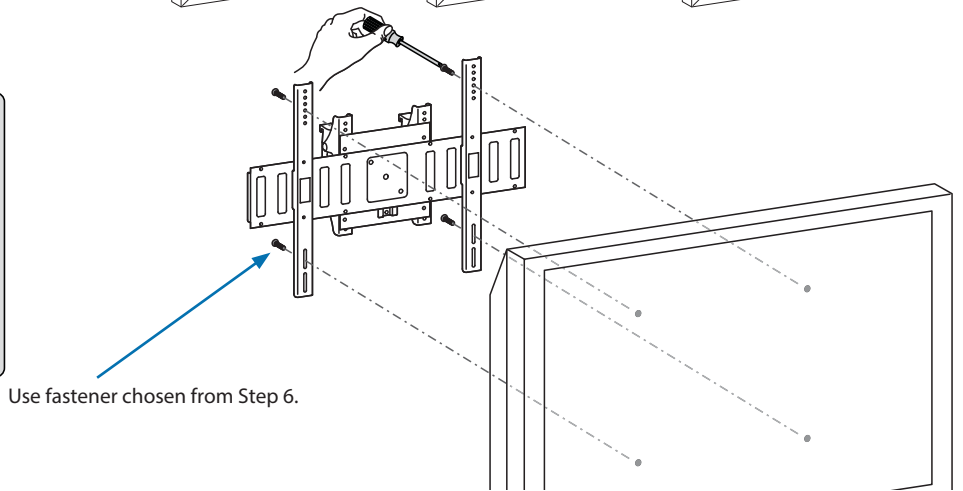
**CAUTION:** DO NOT overtighten fasteners. Overtightening may cause damage to your equipment.

### Recessed Mount





$y^1 = y^2$   
 $x \leq 600\text{mm}$



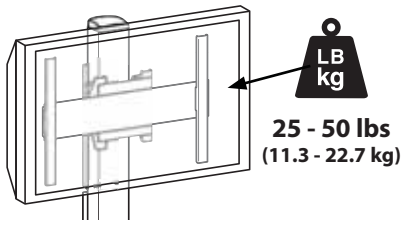
**MINIMUM THREAD ENGAGEMENT**

<b>4mm</b>	<b>4</b>		
<b>5mm</b>	<b>5</b>		
<b>6mm</b>	<b>6</b>		
<b>8mm</b>	<b>8</b>		

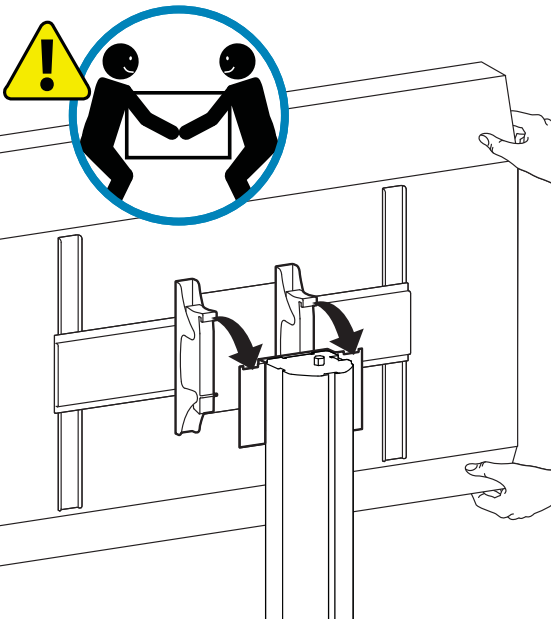
**g** Tighten screws with at least six, full, 360° revolutions\*, but do not over tighten; over tightening may cause damage to display and/or brackets.

\* Six full turns will ensure a minimum thread engagement roughly equal to the diameter of the screw. For instance, if the screw diameter is 8mm, the minimum thread engagement is also 8mm.)

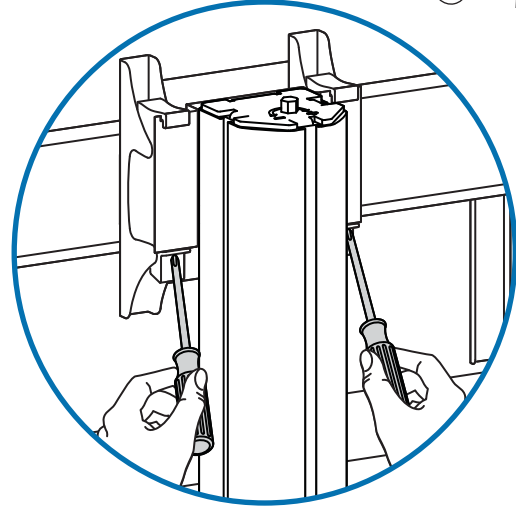





**8** a



**b**

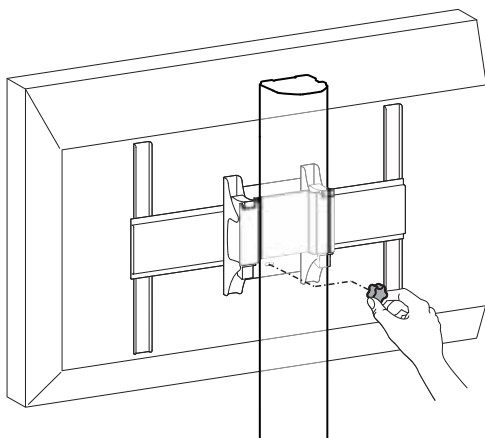
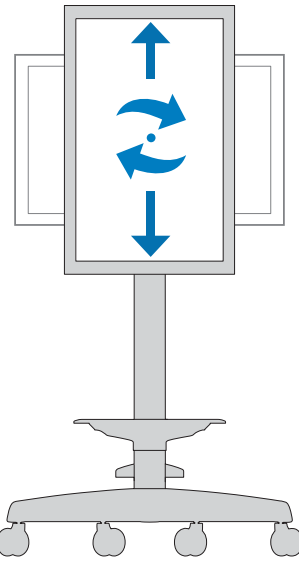
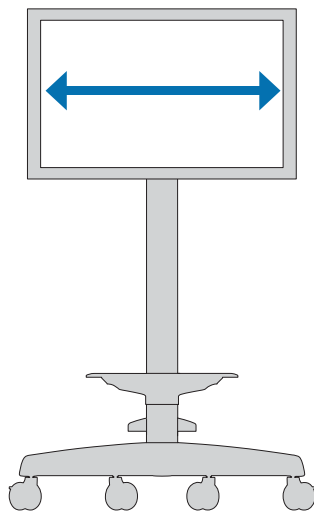


TM Mounting Hardware

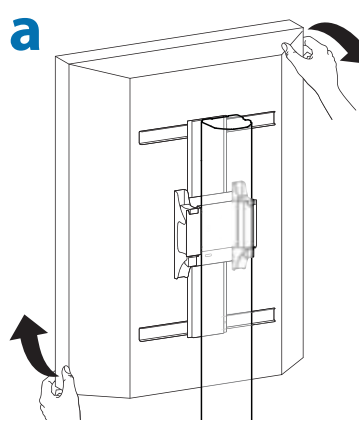
2x  M4 x 16mm

**c**

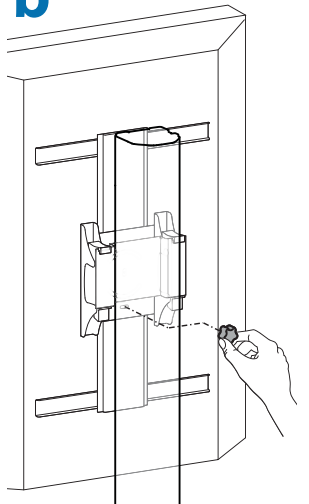
TM Mounting Hardware

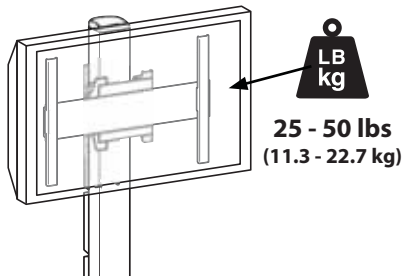


**a**



**b**





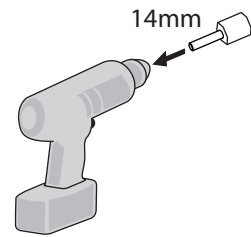
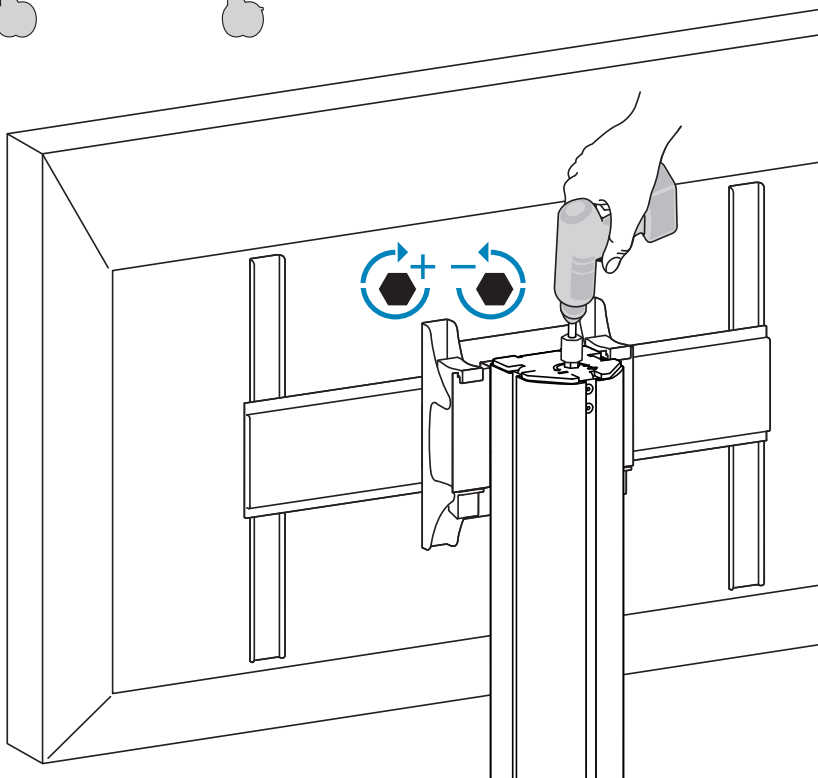
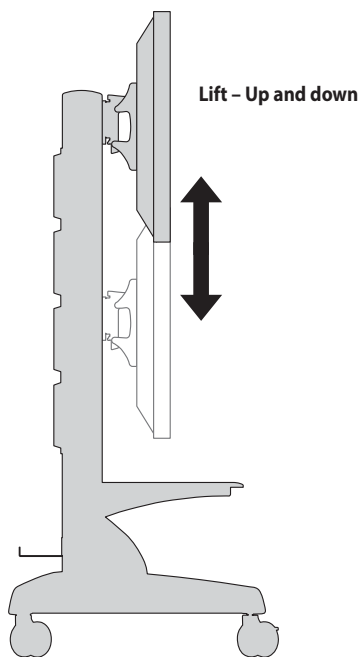
9



# Adjustment Step

Important! You will need to adjust this product after installation is complete. Make sure all your equipment is properly installed on the product before attempting adjustments. This product should move smoothly and easily through the full range of motion and stay where you set it. If movements are too easy or difficult or if product does not stay in desired positions, follow the adjustment instructions to create smooth and easy movements. Depending on your product and the adjustment, it may take many turns to notice a difference. Any time equipment is added or removed from this product, resulting in a change in the weight of the mounted load, you should repeat these adjustment steps to ensure safe and optimum operation.

ENGLISH



### Increase Lift Strength

If the mounted weight is too heavy or this product does not stay up when raised, then you'll need to increase Lift Strength:

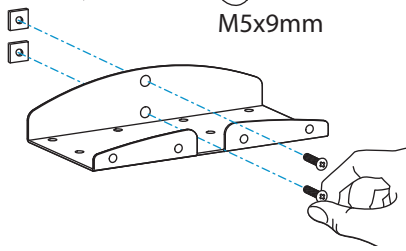
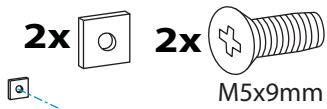


### Decrease Lift Strength

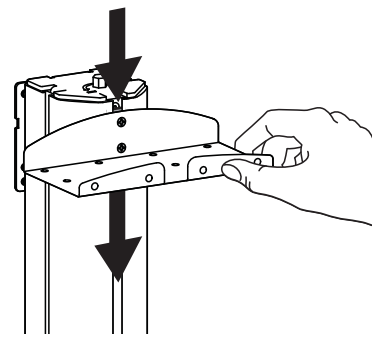
If the mounted weight is too light or this product does not stay down when lowered, then you'll need to decrease Lift Strength:

# 10a

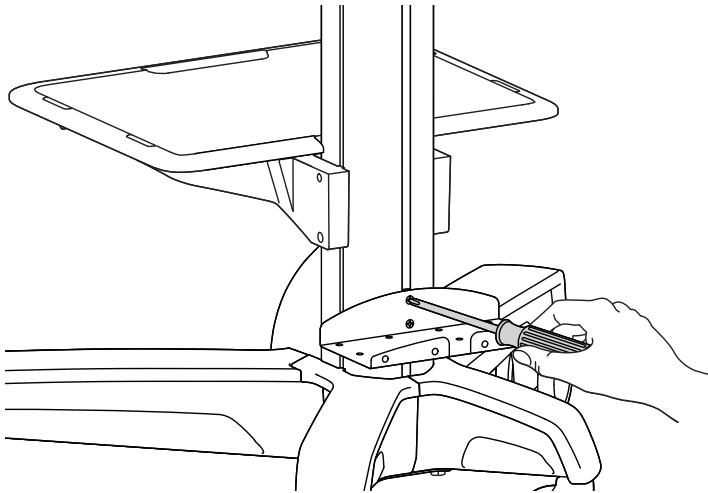
Power Strip Hardware



# b



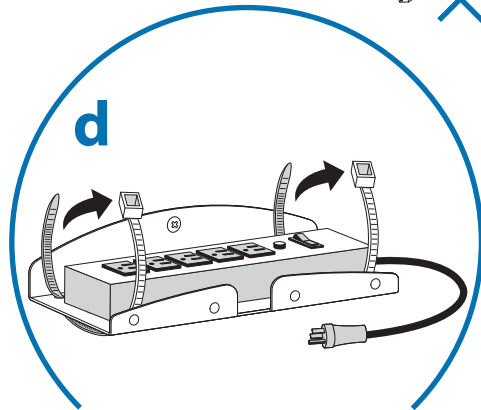
# c



Cable Management Support Hardware

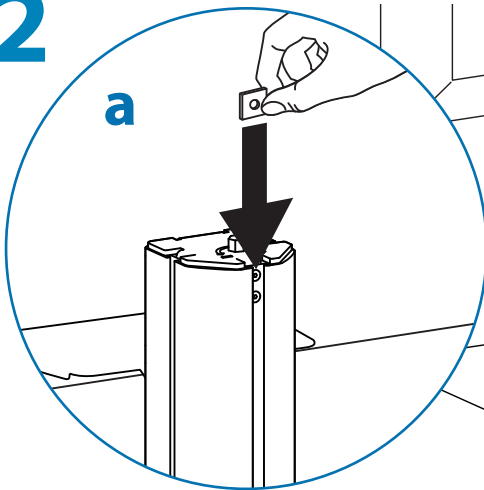


# d

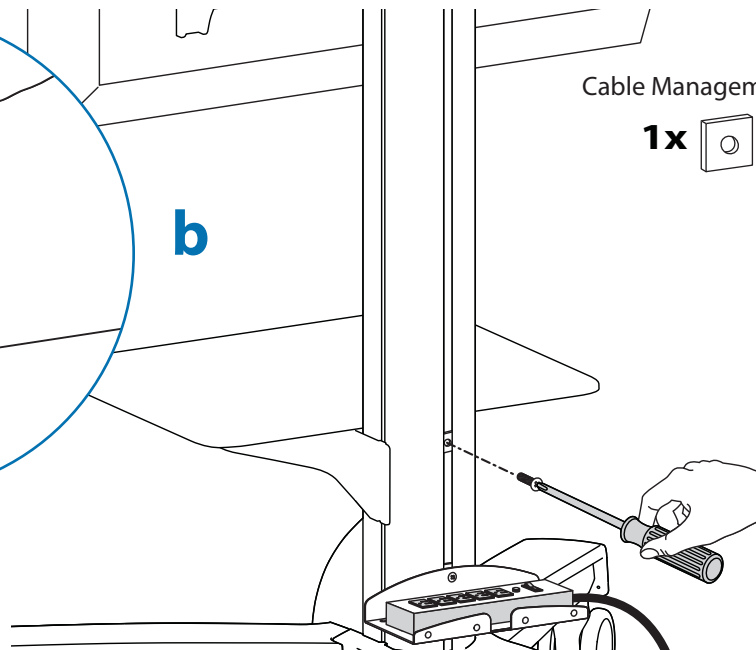


# 12

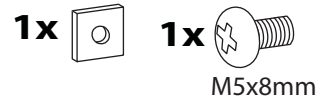
## a



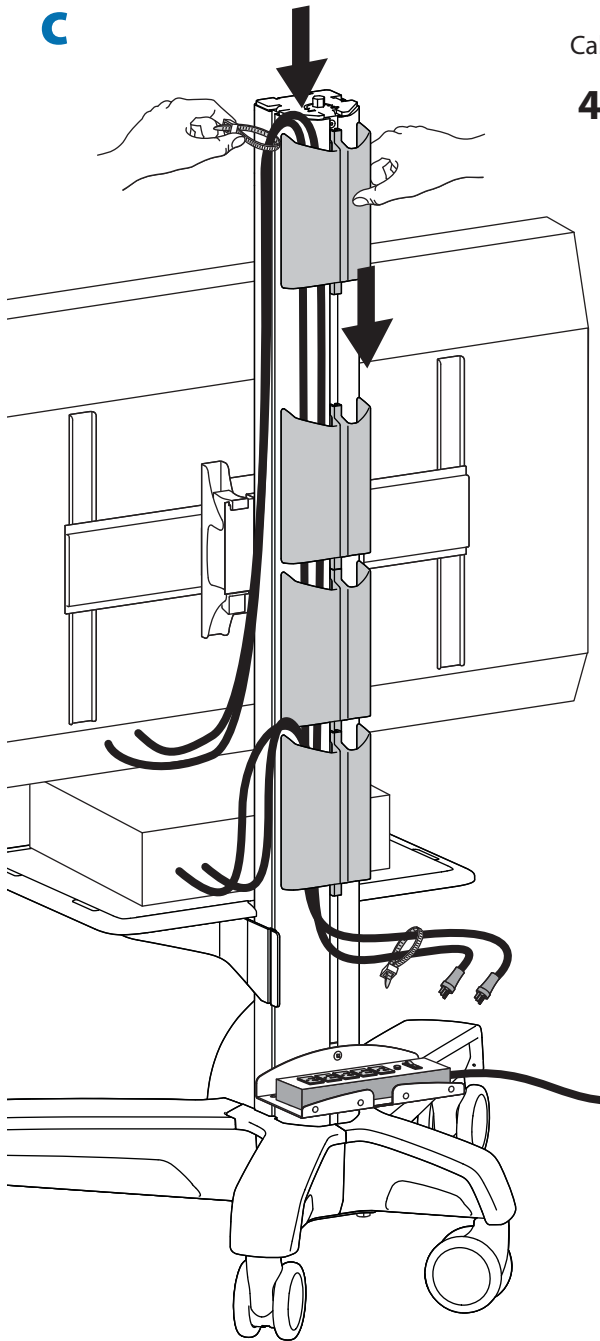
## b



Cable Management Support Hardware



**c**



Cable Management Support Hardware

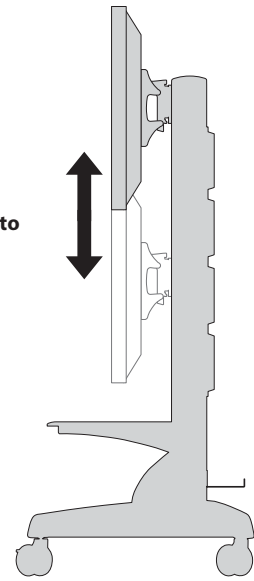
**4x**



**2x**



**NOTE:** Leave enough slack in cables to allow full range of motion.



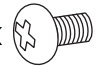
**d**

Top Cap Hardware

**1x**

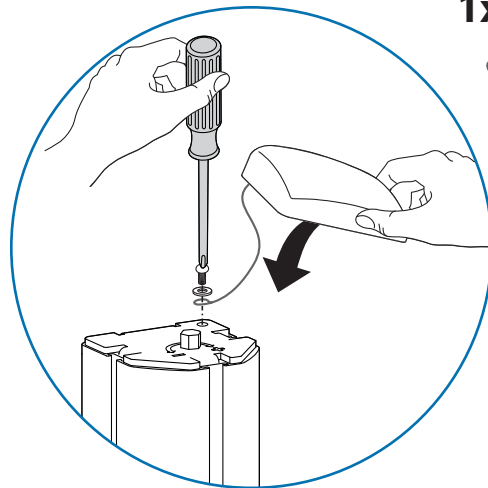


**1x**

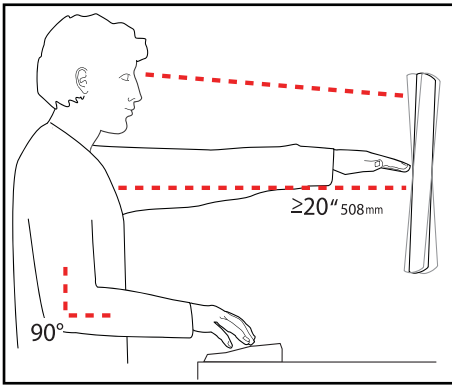


M5x8mm

**1x**



Set Your Workstation to Work For YOU!



Learn more about ergonomic computer use at:  
[www.computingcomfort.org](http://www.computingcomfort.org)

- Height** Position top of screen slightly below eye level.  
Position keyboard at about elbow height with wrists flat.
- Distance** Position screen an arm's length from face—at least 20" (508mm).  
Position keyboard close enough to create a 90° angle in elbow.
- Angle** Tilt screen to eliminate glare.  
Tilt the keyboard back 10° so that your wrists remain flat.

**To Reduce Fatigue**


- Breathe - Breathe deeply through your nose.
- Blink - Blink often to avoid dry eyes.
- Break • 2 to 3 minutes every 20 minutes
- 15 to 20 minutes every 2 hours.

# Touchboards

**205 Westwood Ave, Long Branch, NJ 07740**  
**Phone: 866-94 BOARDS (26273) / (732)-222-1511**  
**Fax: (732)-222-7088 | E-mail: [sales@touchboards.com](mailto:sales@touchboards.com)**

For service and warranty visit [www.ergotron.com](http://www.ergotron.com)

For local customer care phone numbers visit: <http://contact.ergotron.com>



© 2014 Ergotron, Inc.  
All rights reserved.

While Ergotron, Inc. makes every effort to provide accurate and complete information on the installation and use of its products, it will not be held liable for any editorial errors or omissions (including those made in the process of translation from English to another language), or for incidental, special or consequential damages of any nature resulting from furnishing this instruction and performance of equipment in connection with this instruction. Ergotron, Inc. reserves the right to make changes in the product design and/or product documentation without notification to its users. For the most current product information, or to know if this document is available in languages other than those herein, please contact Ergotron. No part of this publication may be reproduced, stored in a retrieval system, or transmitted in any form or by any means, electronic, mechanical, photocopying, recording or otherwise without the prior written consent of Ergotron, Inc., 1181 Trapp Road, Eagan, Minnesota, 55121, USA. Patents Pending and Patented U.S. & Foreign. Ergotron is a registered trademark of Ergotron, Inc.

<b>Americas Sales and Corporate Headquarters</b>	<b>EMEA Sales</b>
St. Paul, MN USA (800) 888-8458 +1-651-681-7600 <a href="http://www.ergotron.com">www.ergotron.com</a> <a href="mailto:sales@ergotron.com">sales@ergotron.com</a>	Amersfoort, The Netherlands +31 33 45 45 600 <a href="http://www.ergotron.com">www.ergotron.com</a> <a href="mailto:info.eu@ergotron.com">info.eu@ergotron.com</a>

<b>APAC Sales</b>	<b>Worldwide OEM Sales</b>
Tokyo, Japan <a href="http://www.ergotron.com">www.ergotron.com</a> <a href="mailto:apacustomerservice@ergotron.com">apacustomerservice@ergotron.com</a>	<a href="http://www.ergotron.com">www.ergotron.com</a> <a href="mailto:info.oem@ergotron.com">info.oem@ergotron.com</a>