

205 Westwood Ave, Long Branch, NJ 07740  
Phone: 866-94 BOARDS (26273) / (732)-222-1511  
Fax: (732)-222-7088 | E-mail: sales@touchboards.com

## Ergotron®

### Glide Wall Mount LD-X, HD and VHD

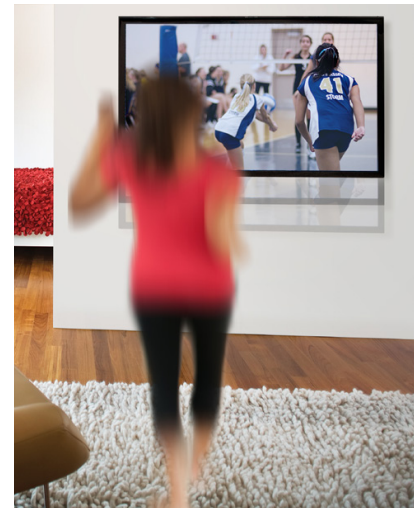





#### Highlights

- Lift, lower and tilt for the perfect picture and comfortable viewing
- Display/TV moves with only a light touch with patented CF Technology
- Discreet mounting hardware nearly disappears
- Raise TV during standing activities; lower while sitting
- Display/TV mounts close to the wall and out of the way
- Lift n' Lock™ for quick installation
- Easy to use – simple installation and effortless operation
- Ratchet-free tilting



Effortlessly lift, lower and tilt your large TV or display for the perfect picture and the most comfortable viewing. This revolutionary design delivers unprecedented height adjustability in an extremely low profile module and easily tilts up to 10° to alleviate glare. Our patented Constant Force (CF) technology lets you position your large display with a simple, light touch—move down for viewing while sitting and up for standing. The Glide Wall Mount is also ideal for gaming and entertaining.



			
	Glide Wall Mount LD-X	Glide Wall Mount HD	Glide Wall Mount VHD
<b>Part # (color)</b>	61-113-085 (black)	61-061-085 (black)	61-128-085 (black)
<b>Typical LCD Size</b>	27–42"	30–60"	≥ 46"
<small>LCD SIZE IS APPROXIMATION. DIMENSION IS DIAGONAL MEASUREMENT OF SCREEN. LCD SIZE MAY BE EXCEEDED AS LONG AS SCREEN WEIGHT DOES NOT EXCEED MAXIMUM WEIGHT CAPACITY OF THE MOUNT.</small>			
<b>Weight Capacity</b>	12–30 lbs (5,4–13,6 kg)	20–40 lbs (9–18 kg)	45–70 lbs (20,4–32 kg)
<b>Lift</b>	10" (25,4 cm)	18" (46 cm)	16" (40,6 cm)
<b>Tilt</b>	10°	10°	10°
<b>VESA</b>	MIS-D/E/F See website for details	MIS-E/F See website for details	MIS-D/E/F See website for details
<b>Depth</b>	4.5" (11,4 cm)	2" (5 cm)	2.7" (6,9 cm)
<b>Warranty</b>	5 years	5 years	5 years
<b>Shipping Dimensions</b>	19.3" x 12.2" x 4.3" (49 x 31 x 11 cm)	32.25" x 18" x 5" (82 x 46 x 12,5 cm)	29" x 20.7" x 4" (77 x 54 x 11 cm)
<b>Shipping Weight</b>	9.3 lbs (4,2 kg)	30 lbs (13,5 kg)	36.4 lbs (16,5 kg)

© 2013 Ergotron, Inc. rev. 12/10/2013/EA Literature made in US Content is subject to change without notification

**Americas Sales and Corporate Headquarters**  
 St. Paul, MN USA  
 (800) 888-8458  
 +1-651-681-7600  
 www.ergotron.com  
 sales@ergotron.com

**EMEA Sales**  
 Amersfoort, The Netherlands  
 +31 33 45 45 600  
 www.ergotron.com  
 info.eu@ergotron.com

**APAC Sales**  
 Tokyo, Japan  
 www.ergotron.com  
 apaccustomerservice@ergotron.com

**Worldwide OEM Sales**  
 www.ergotron.com  
 info.oem@ergotron.com

