

205 Westwood Ave, Long Branch, NJ 07740
Phone: 866-94 BOARDS (26273) / (732)-222-1511
Fax: (732)-222-7088 | E-mail: sales@touchboards.com

ERGOTRON®

Tandem Tablet Holder



Highlights

- Captures the mobility of the Surface and allows the Surface to drive one or multiple monitors
- Connects the Surface below or to the side of a VESA-mounted 20–27" (50,8–68,6 cm) monitor
- Easily remove the tablet from the easel when you need to go mobile
- Sturdy, yet lightweight design maintains touch-screen stability and ensures easy arm adjustments
- Includes a box to hold Microsoft's proprietary Surface Dock on the back of the monitor, providing quick system connection while saving desktop space
- Open architecture also makes it compatible with other popular tablet brands and models



Position your Microsoft® Surface™ or other tablet within your digital workflow

The Tandem Tablet Holder is an accessory that converts a VESA mount to position your Surface alongside or below your monitor. It is designed specifically for Microsoft® Surface™, but its open architecture also makes it compatible with many popular tablet brands and models from Apple®, HP®, Samsung®, Wacom and more.

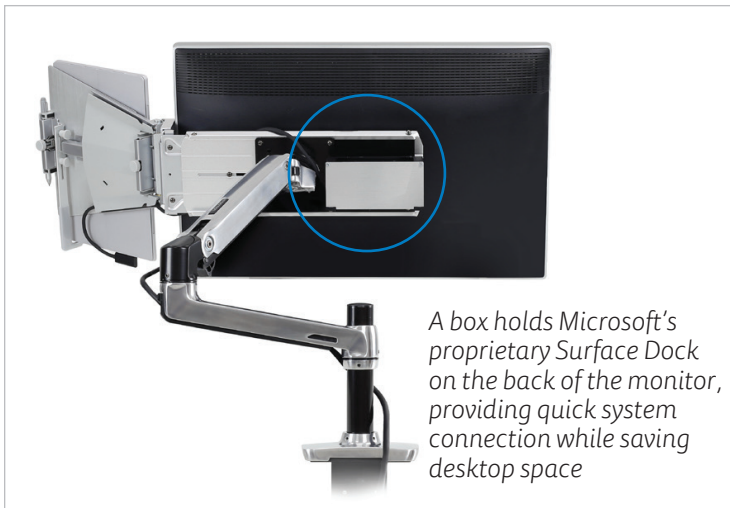


Sturdy metal construction maintains touch-screen stability. It especially works great with a stylus and drawing applications.

Designed for



Surface Pro 3, Surface Pro 4
Surface Book



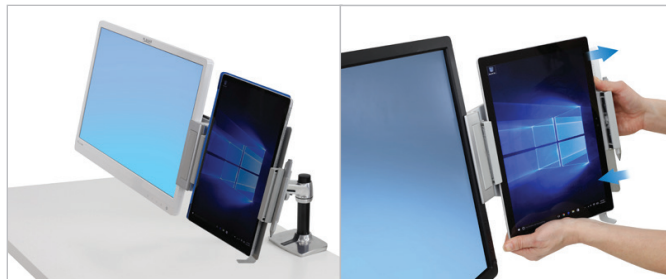
A box holds Microsoft's proprietary Surface Dock on the back of the monitor, providing quick system connection while saving desktop space



The tablet easel can be installed below or on either side of your monitor. The holder assembly easily attaches to the VESA plate of your monitor mount



Achieve a 60° tilt range when tablet is mounted below the monitor



A simple push of a thumb releases the tablet from the easel, allowing you to quickly go mobile with your tablet



**Tandem
Tablet Holder**

- The tablet easel can be installed at the bottom or either side of your monitor; the holder assembly easily attaches to the VESA plate of your monitor mount
- Install the monitor at any point along the easel crossbar to counterbalance the tablet, creating a stable, yet easily adjusted, tandem-screen configuration
- Sturdy metal construction maintains touch-screen stability
- Works great with a stylus and drawing applications
- Lightweight design ensures effortless mounting arm adjustment
- Generally compatible with monitor screen sizes of 20" to 27" diagonal. Monitor thickness should be 2" to 4" (5 to 10 cm); monitor's maximum outside height = 12" (30 cm) and maximum outside width = 27" (69 cm) when VESA hole pattern is centered on back of display
- Includes tablet easel, easel crossbar, Surface Dock box, VESA interface plate and mounting hardware

Part # (color)	85-046-231 (brushed aluminum)
Typical LCD Size	20-27" See website for details
Weight Capacity	≤ 3 lbs (1,3 kg) See website for details
Pan	Side-to-side range (when mounted on either side of monitor): 60°
Tilt	Up/down tilt range (when mounted below monitor): 60°
VESA	MIS-D
Product Weight	6.5 lbs (3 kg)
Shipping Dimensions	20" x 16.3" x 4.5" (51 x 41 x 11,5 cm)
Shipping Weight	8.5 lbs (3,9 kg)
Warranty	5 years

© 2016 Ergotron, Inc. rev. 04/26/2016/EA Literature made in the U.S.A.
Content is subject to change without notification

**Americas Sales and
Corporate Headquarters**

St. Paul, MN USA
(800) 888-8458
+1-651-681-7600
www.ergotron.com
sales@ergotron.com

EMEA Sales

Amersfoort, The Netherlands
+31 33 45 45 600
www.ergotron.com
info.eu@ergotron.com

APAC Sales

Tokyo, Japan
www.ergotron.com
apaccustomerservice@ergotron.com

Worldwide OEM Sales

www.ergotron.com
info.oem@ergotron.com

ERGOTRON®

A Nortek Company

Touchboards

205 Westwood Ave, Long Branch, NJ 07740
Phone: 866-94 BOARDS (26273) / (732)-222-1511
Fax: (732)-222-7088 | E-mail: sales@touchboards.com