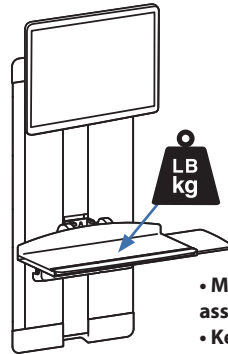
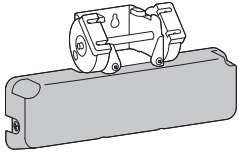


## VL Auto Retracting Keyboard Kit



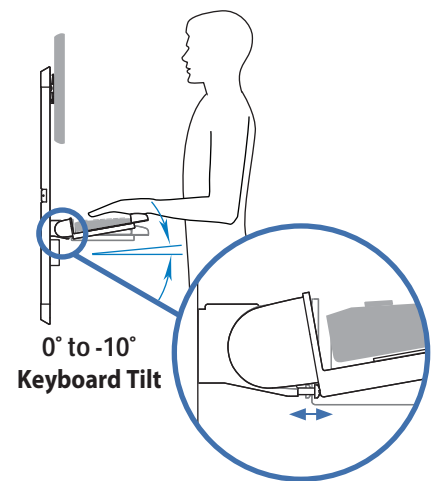
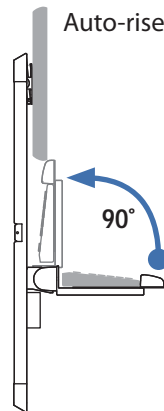
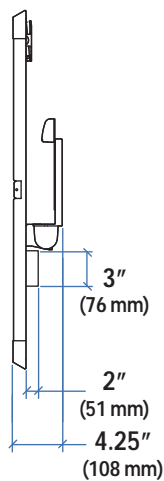
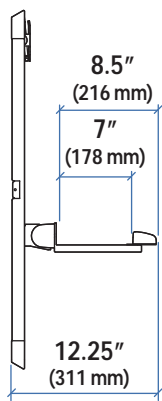
205 Westwood Ave, Long Branch, NJ 07740  
 Phone: 866-94 BOARDS (26273) / (732)-222-1511  
 Fax: (732)-222-7088 | E-mail: sales@touchboards.com

For use with Ergotron products: 25-022-100, 25-022-101, 60-593-216, 60-593-200



**Total weight of equipment mounted to the keyboard tray:**  
**0.75 lbs - 2.5 lbs**  
**(0.34 kg) - (1.14 kg)**

- Monitor height should not exceed 15.75" (400 mm), assuming VESA hole pattern is centered in monitor.
- Keyboard depth should not exceed 7" (178 mm).



**Americas Sales and Corporate Headquarters**

St. Paul, MN USA  
 (800) 888-8458  
 +1-651-681-7600  
 www.ergotron.com  
 sales@ergotron.com

**EMEA Sales**

Amersfoort, The Netherlands  
 +31 33 45 45 600  
 www.ergotron.com  
 info.eu@ergotron.com

**APAC Sale**

Tokyo, Japan  
 www.ergotron.com  
 apaccustomerservice@ergotron.com

**Worldwide OEM Sales**

www.ergotron.com  
 info.oem@ergotron.com

