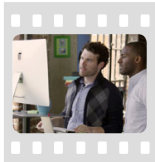
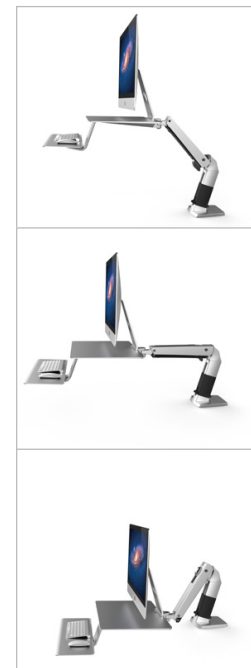


ERGOTRON® WorkFit-A, for Apple®

Stand up and innovate.

The WorkFit-A for Apple is a sleek, height-adjustable workstation designed so that you can stand more, sit less, and become healthier doing so. The advanced ergonomics and uncompromising style of the WorkFit-A are designed so that your body, space, and passion all function in perfect harmony.

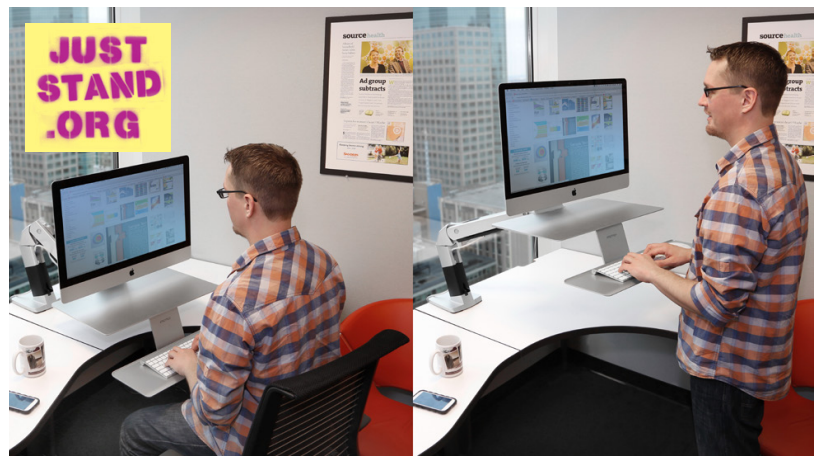


See "WorkFit for Apple"
movies.ergotron.com

People who think different can now work different. Standing is like walking: it increases energy, burns extra calories, tones muscles, improves posture, increases blood flow, and ramps up metabolism.

WorkFit-A Sit-Stand Workstation

- Optimized for the latest iMac®, 24-422-227 also works with non-Apple displays
- Aluminum construction
- Fluid, one-touch motion with patented CF Technology
- Height adjustment range of 19 inches (48 cm)
- Keyboard tilts
- Clamps to back edge of desks up to 31.5" (800 mm) deep
- Grommet mounts through holes in desks up to 29.5" (749 mm) deep





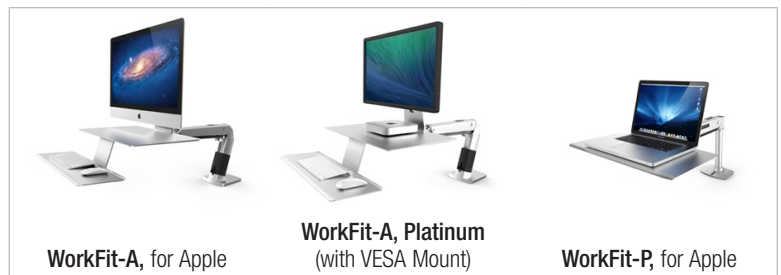
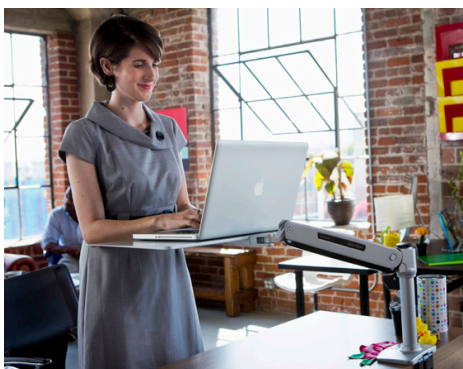
ERGOTRON® WorkFit-P, for Apple

Think on your toes.

The WorkFit-P is an elegant height adjustable laptop stand, perfect for a MacBook®, that can also be used as an extra writing or drawing surface. The WorkFit-P provides an ergonomic, minimalist station that enables you to stand more and sit less, improving your creative output and overall health.

WorkFit-P Sit-Stand Workstation

- Generous worksurface, perfect for laptops
- Aluminum construction
- Fluid, one-touch motion with patented CF Technology
- Height adjustment range of 20 inches (51 cm)
- Holds up to 10 lbs (4.5 kg)
- Clamps to back edge of desks or grommet mounts through holes 0.78–2.56" (20–65 mm) thick



	WorkFit-A, for Apple	WorkFit-A, Platinum (with VESA Mount)	WorkFit-P, for Apple
Part # (color)	24-414-227 (silver)	24-422-227 (silver)	24-408-227 (silver)
Typical LCD Size	21.5–27" Compatible with Apple 27" iMac models (from late 2012 to present that include a built-in base) and 21.5" iMac models (from late 2009 to present that include a built-in base). See website for details	≤ 27" Works with non-Apple VESA compatible displays. Compatible with Apple 21–27" iMac models with Built-in VESA Mount Adapter (from early 2013 to present). See website for details	—
<small>LCD SIZE IS APPROXIMATION. DIMENSION IS DIAGONAL MEASUREMENT OF SCREEN. LCD SIZE MAY BE EXCEEDED AS LONG AS SCREEN WEIGHT DOES NOT EXCEED MAXIMUM WEIGHT CAPACITY OF THE MOUNT.</small>			
Weight Capacity	12.5–27.5 lbs (5.7–12 kg) See website for details	9–24 lbs (4.1–10.9 kg) See website for details	≤ 10 lbs (4.5 kg)
Lift	19" (48 cm)	19" (48 cm)	20" (51 cm)
Tilt	Screen tilt of 30° is built into the iMac base; WorkFit does not provide additional screen tilt capability.	30° ↑ 25° / ↓ 5°	—
Pan	180°	180°	360°
Warranty	5 years	5 years	5 years

© 2014 Ergotron, Inc. rev. 05/06/2014/EA Literature made in US
Content is subject to change without notification

Americas Sales and Corporate Headquarters

St. Paul, MN USA
(800) 888-8458
+1-651-681-7600
www.ergotron.com
sales@ergotron.com

EMEA Sales

Amersfoort, The Netherlands
+31 33 45 45 600
www.ergotron.com
info.eu@ergotron.com

APAC Sales

Tokyo, Japan
www.ergotron.com
apaccustomerservice@ergotron.com

Worldwide OEM Sales

www.ergotron.com
info.oem@ergotron.com



ERGOTRON®

NORTEK A Nortek Company