

esi®



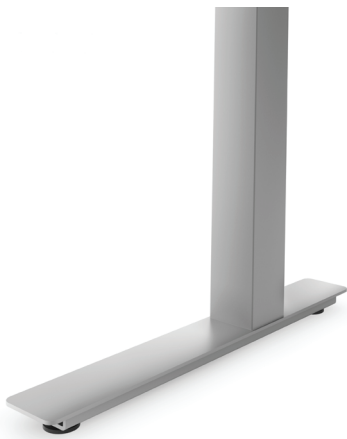
Trada™

Electric height adjustable table base

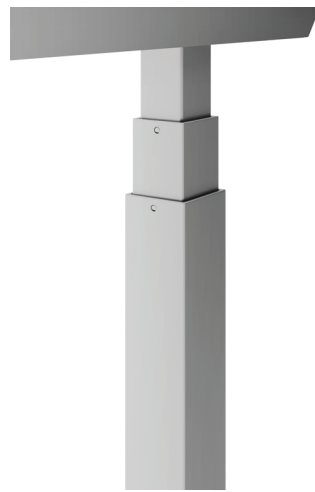


# Trada

## Electric height adjustable table base



C-leg



three stage adjustable leg



standard keypad with up and down buttons



locking casters



digital 4 memory keypad

### Digital 4 memory keypad

- Digital Programmable Keypad with 4 memory settings
- Includes up and down buttons, a digital read out, 4 memory presets and a programmable upper and lower limit
- Sleep Mode to decrease power consumption

Model # 2TDM-DGTLKPD

### Product specs

- Electric height adjustment
- 265 lb. base lifting capacity
- 1.5"/sec adjustment speed
- 25.5" height adjustment range
  - 24.5"–50.0" (low/high)  
(excluding worksurface)
- Anti-collision
- Three stage adjustable legs
- C-leg
- Adjustable width frame accommodates worksurfaces 48.0"–72.0"
- Soft start and stop
- Locking casters available
- Two motors
- ADA compliant
- 9' power cord
- Table base is UL962 listed
- Meets or exceeds BIFMA x5.5, and CSA C22.2 #68 guidelines
- Works with peds or storage with 22.0" max. height
- Low standby power consumption
- Steel frame and foot construction
- Standard keypad with up and down buttons or digital 4-memory keypad available
- Complete tables available (*base and top*)
- Warranty: 15 yr. (*structural*)/7 yr. (*mechanical*)

### Available base finishes

- Silver -SLV
- Black -BLK
- White -WHT

### Caster Kit

- Set of casters for table base
- Increases height by 2.0"
- Locking casters for security

Model # CASTERKIT-2TD

# Trada

## Electric height adjustable table base



### Complete quick ship table model # breakdown

2TD\_\_R4824-QS-T\_\_  
| | | | | | | | | |  
a b d e f g h i j

2TDM\_\_R4824-QS-T\_\_  
| | | | | | | | | |  
a b c d e f g h i j

- a: number of legs
- b: type of table base
- c: 4-memory digital keypad
- d: finish of base
- e: worksurface shape
- f: worksurface width
- g: worksurface depth
- h: quick ship indicator
- i: laminate material
- j: laminate color

### 48.0" x 24.0" quick ship complete table

- Trada table base with a 48.0"w x 24.0"d rectangle TFL worksurface with standard keypad

Model # 2TD\_\_R4824-QS-T\_\_

- Trada table base with a 48.0"w x 24.0"d rectangle TFL worksurface with digital keypad

Model # 2TDM\_\_R4824-QS-T\_\_

### 60.0" x 30.0" quick ship complete table

- Trada table base with a 60.0"w x 30.0"d rectangle TFL worksurface with standard keypad

Model # 2TD\_\_R6030-QS-T\_\_

- Trada table base with a 60.0"w x 30.0"d rectangle TFL worksurface with digital keypad

Model # 2TDM\_\_R6030-QS-T\_\_

■ base finish notation    ■ laminate color notation

### Available base finishes

- Silver -S
- Black -B
- White -W

### Available TFL quick ship laminates

- Beigewood -BG
- Phantom Charcoal -PC
- Shadow Oak -SO
- Designer White -DW
- Grey -GR
- Dove Grey -DV

### Trada table



Quick ship complete table options include: silver, black, or white table bases; 48.0"x24.0" or 60.0"x30.0" rectangle worksurfaces; all six TFL laminates. For all other combinations, please call our Customer Service Department for the estimated lead time and cost.

Multiple worksurface shapes and laminates are available. See Complete Table and Worksurface Guide for worksurface details including laminate colors.

# Trada

Electric height adjustable table base



Table bases		Available worksurfaces				
Table base model	Worksurface shape	Worksurface dimension	TFL standard		HPL standard	HPL premium
			Quick ship	Standard ship	Standard ship	Standard ship
2TD-C48-24-____ 2TDM-C48-24-____	 W D Rectangle	48"w x 24"d	2R4824-QS-TFL-__	2R4824-TFL-__	2R4824-HPL-__	2R4824-PHPL-__
		60"w x 24"d	-	2R6024-TFL-__	2R6024-HPL-__	2R6024-PHPL-__
		72"w x 24"d	-	2R7224-TFL-__	2R7224-HPL-__	2R7224-PHPL-__
2TD-C48-30-____ 2TDM-C48-30-____	 W D Rectangle	48"w x 30"d	-	2R4830-TFL-__	2R4830-HPL-__	2R4830-PHPL-__
		60"w x 30"d	2R6030-QS-TFL-__	2R6030-TFL-__	2R6030-HPL-__	2R6030-PHPL-__
		72"w x 30"d	-	2R7230-TFL-__	2R7230-HPL-__	2R7230-PHPL-__

## Worksurface Program

Multiple worksurface shapes and laminates are available. See the Complete Table & Worksurface Ordering Guide for worksurface details including pricing and laminate colors. TFL quick ship worksurfaces are shipped out in 48 hours, TFL standard and HPL standard/premium worksurfaces ship within three weeks. Lead time may vary depending on quantities ordered and their availability

*Table bases and worksurfaces can be purchased independently or as a combination.*

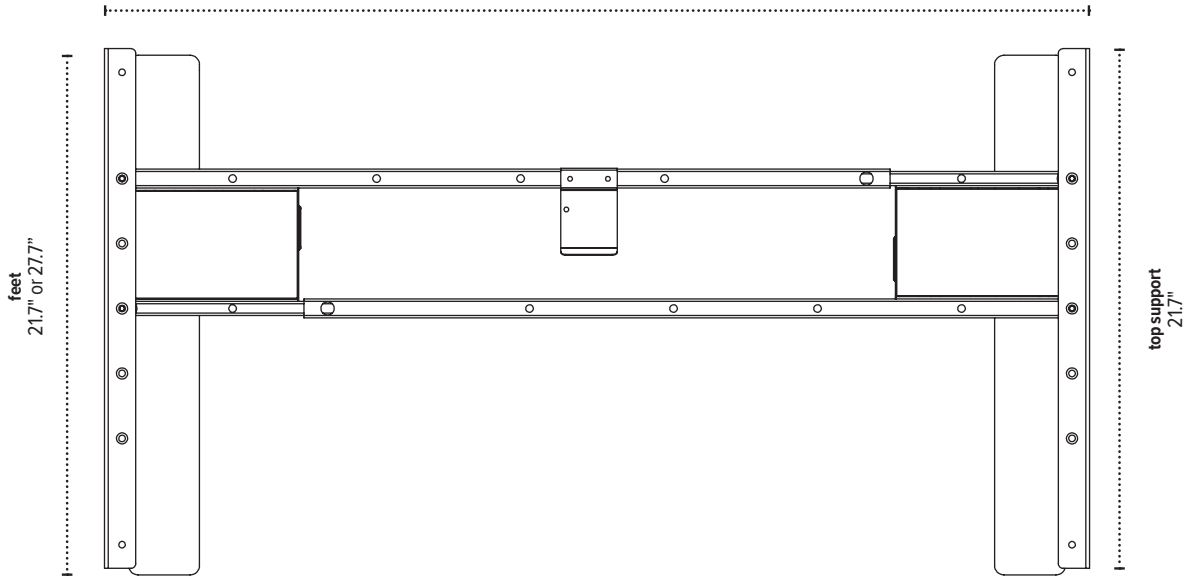
*ESI worksurfaces are made to exact dimensions. If nominal sizing is needed, please specify when ordering.*

# Trada

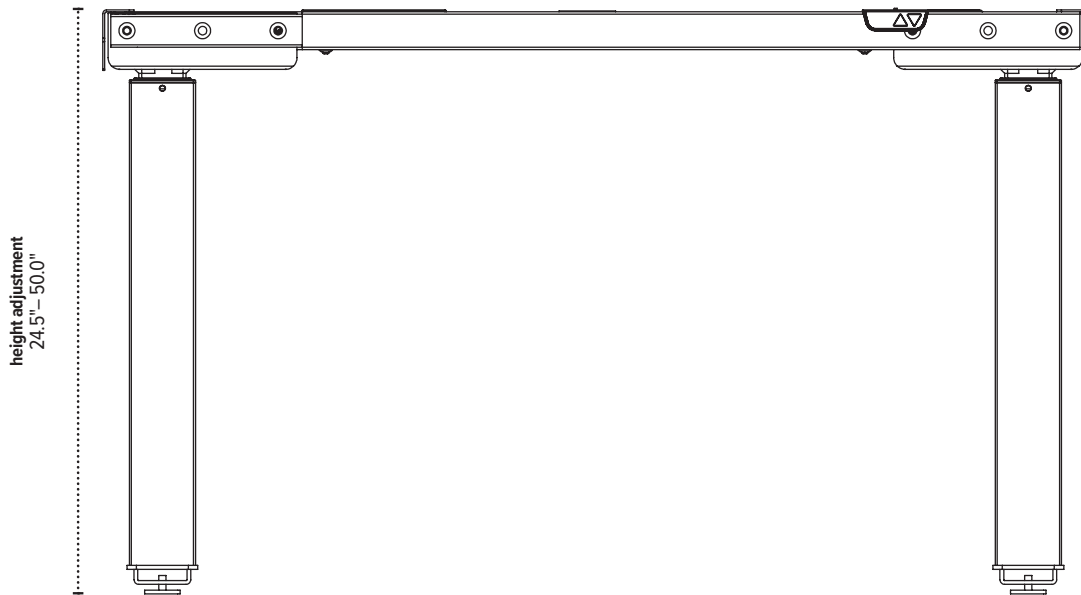
Electric height adjustable table base



Top view  
adjustable frame  
41.0" – 59.5"



Front view



The base dimensions as shown are actual.