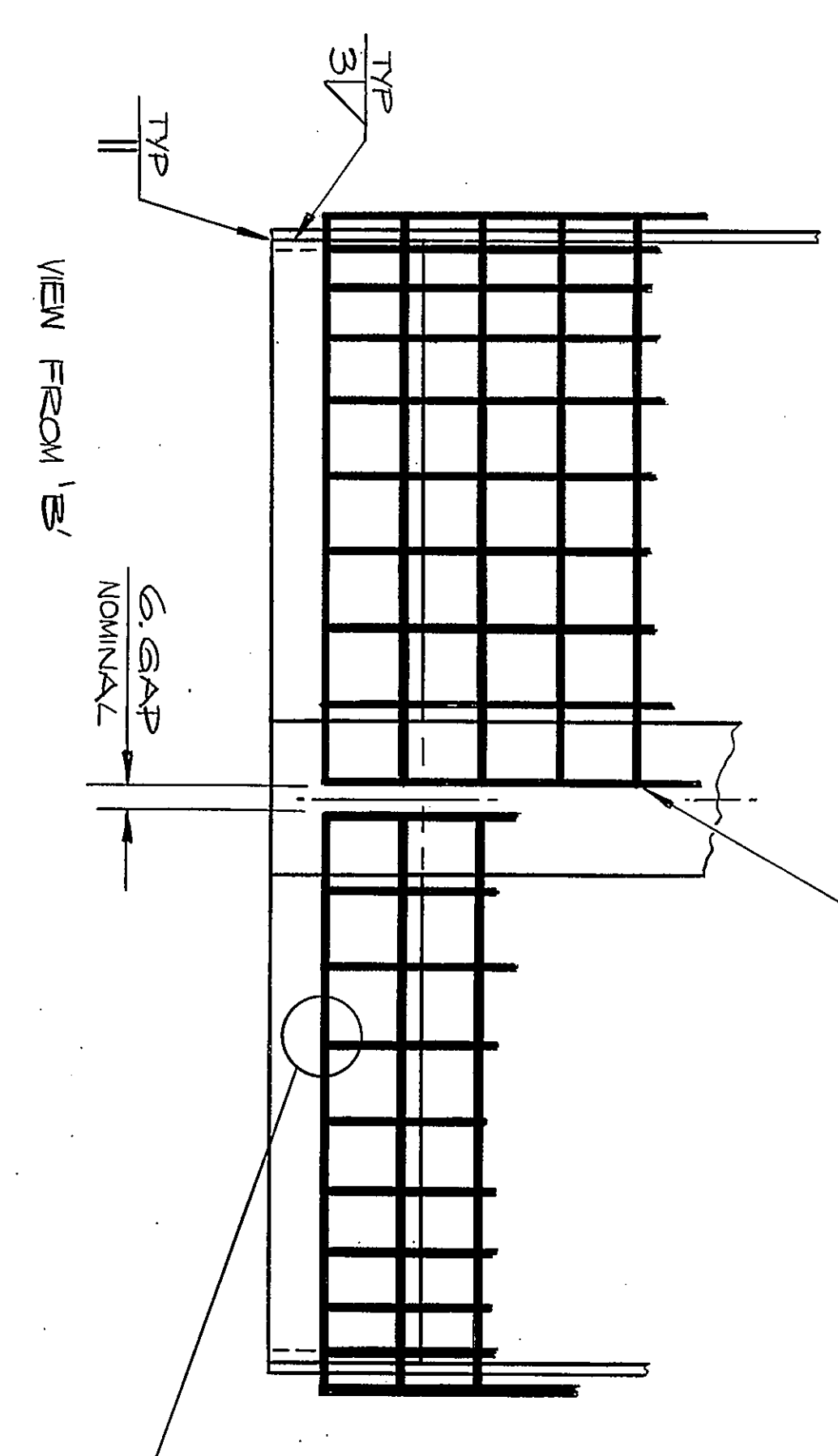
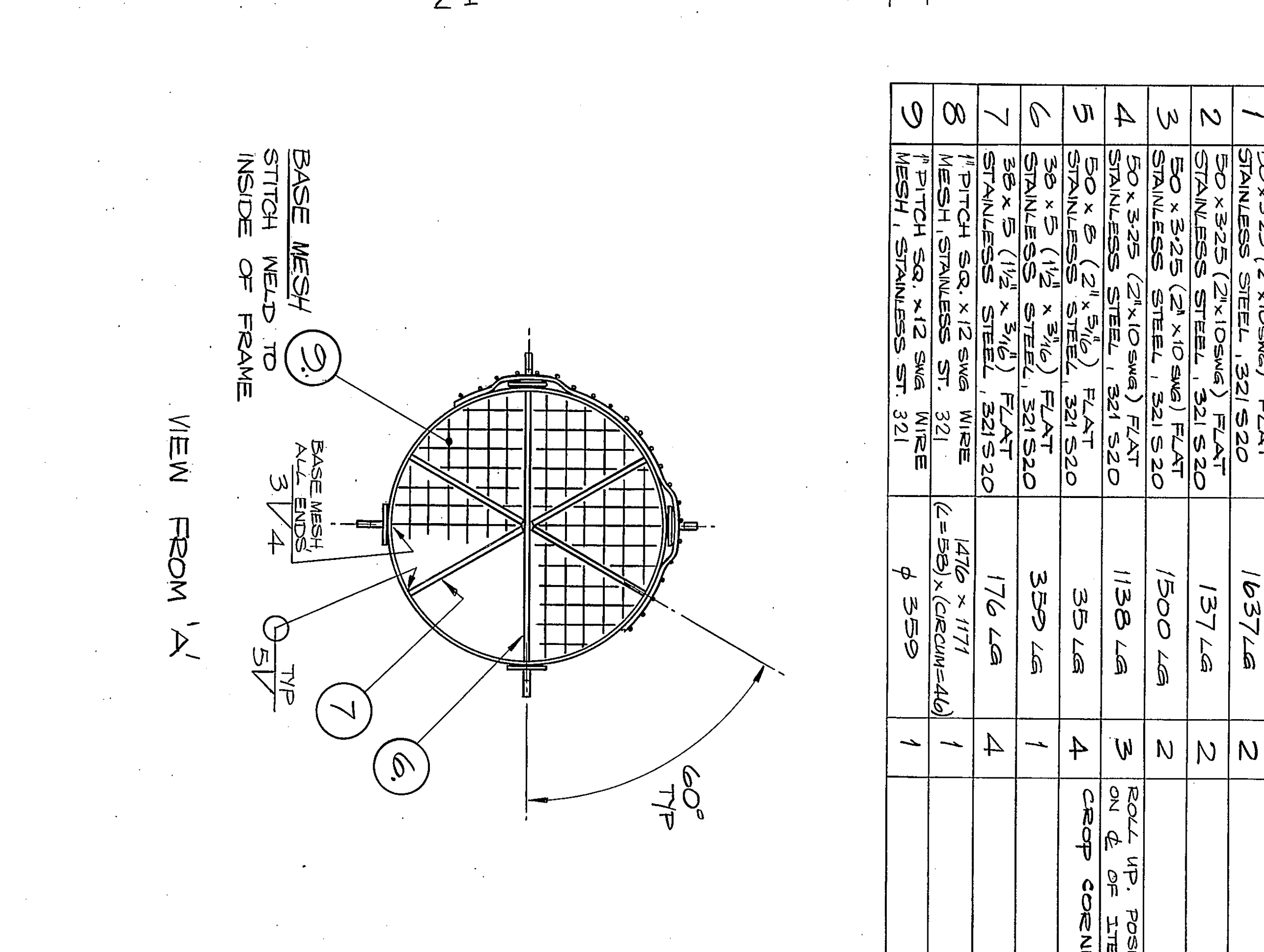
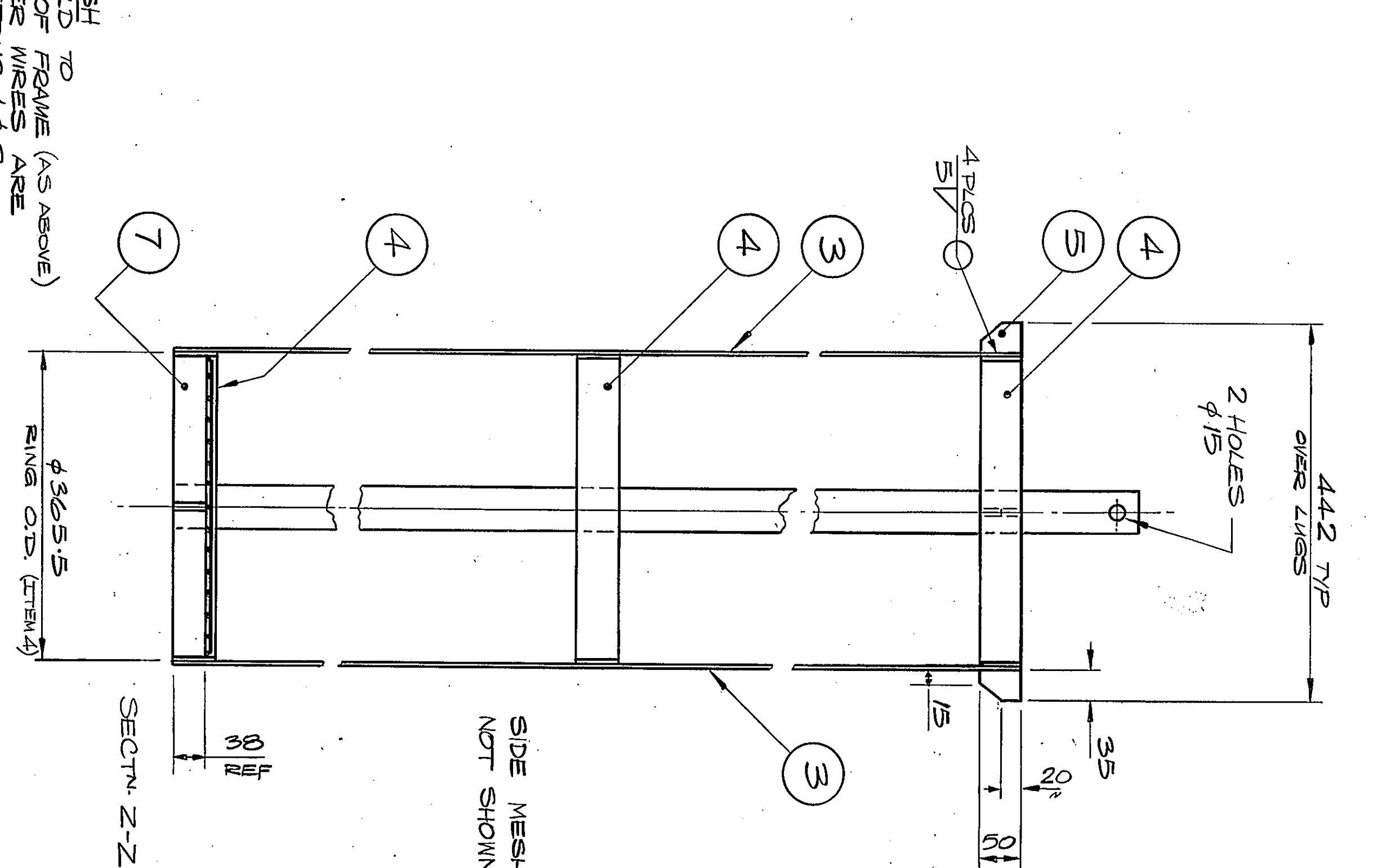
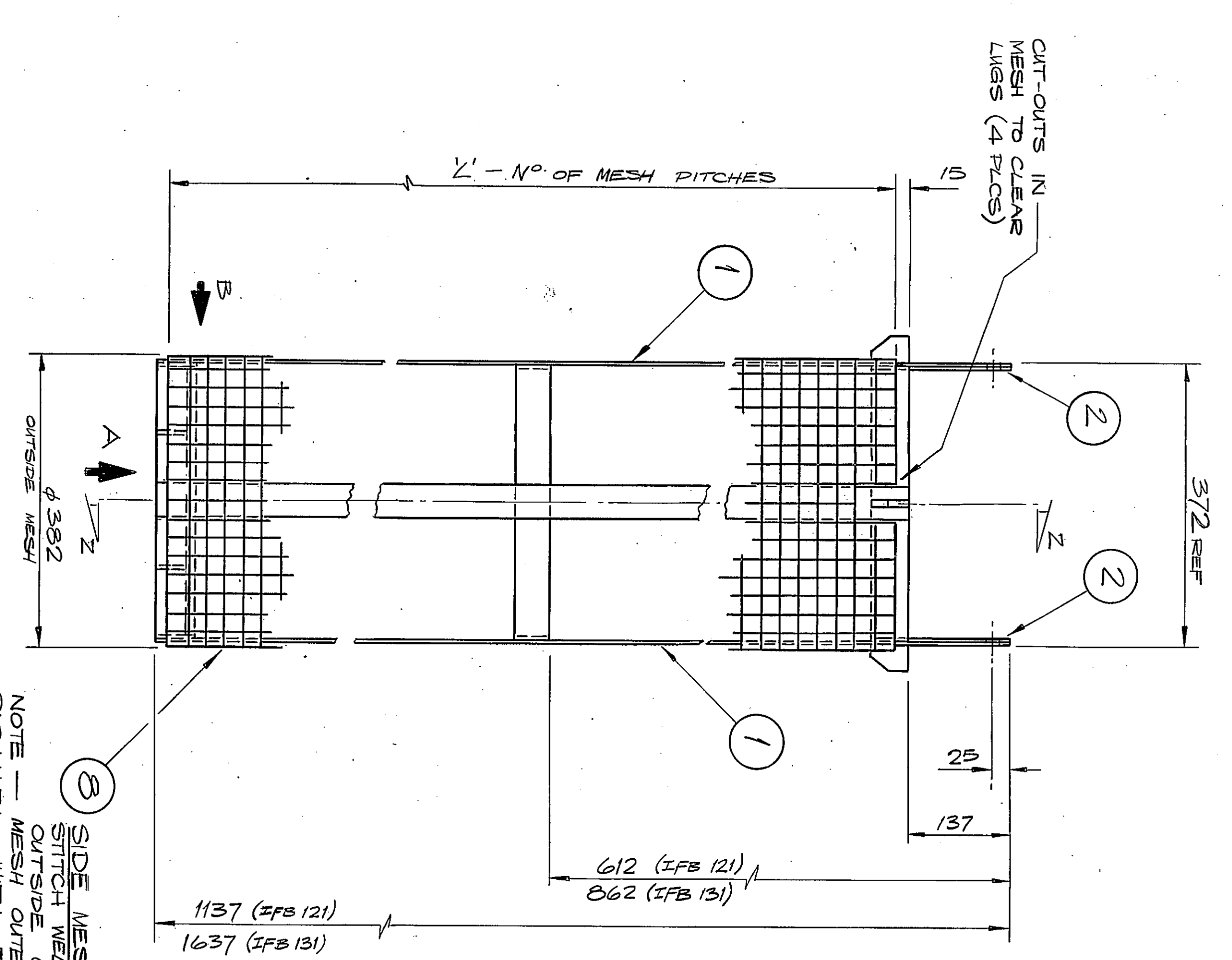
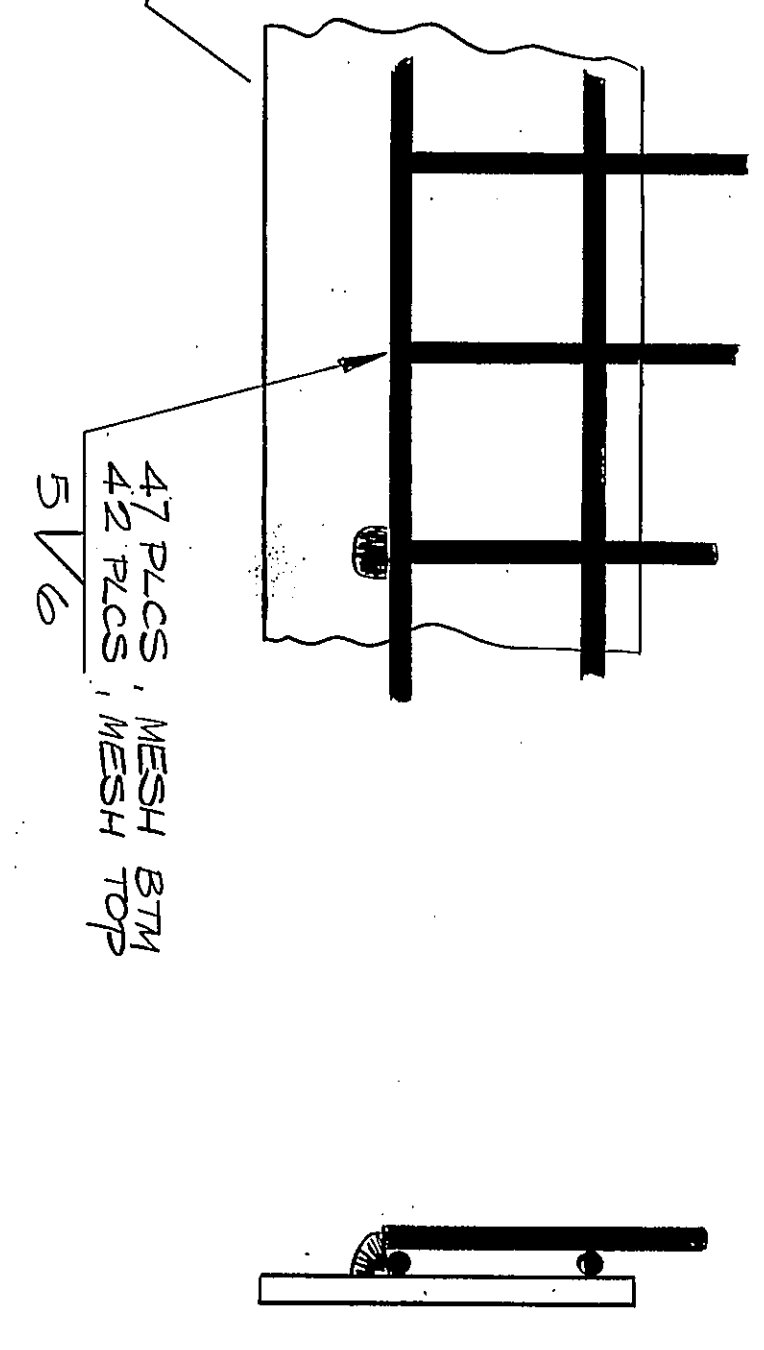


11 PLS, BOTH SIDES OF GAP
ONE WELD PER 4 MESH
PITCHES (MAX)



WELDING NOTE
BASKET FRAME — AT ALL ABUTTING & OVERLAPPING JOINTS, CONTINUOUS WELD, WITH BUTT OR FILLET WELDS AS APPROPRIATE, TO FORM A 'FULLY WELDED STRUCTURE', MINIMUM WELD SIZE 3mm

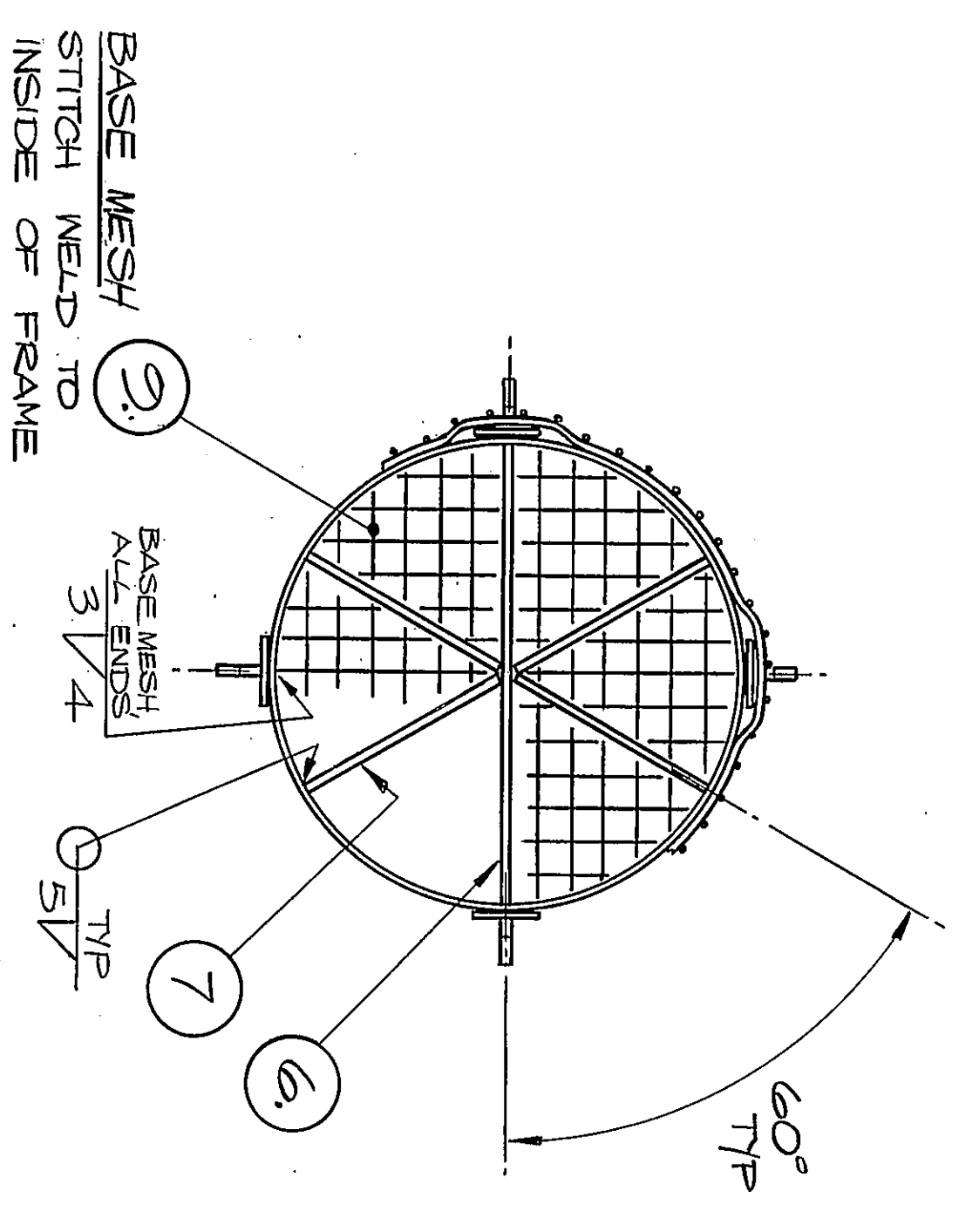


CUTTING LIST IFB 121 DRG. No. F 6426

ITEM No.	MATL.	SIZE	No. OF	REMARKS
1	50 x 3.25 (21 x 10 SWG) FLAT STAINLESS STEEL, 321 S20	1137 LG	2	
2	50 x 3.25 (21 x 10 SWG) FLAT STAINLESS STEEL, 321 S20	137 LG	2	
3	50 x 3.25 (21 x 10 SWG) FLAT STAINLESS STEEL, 321 S20	1000 LG	2	
4	50 x 3.25 (21 x 10 SWG) FLAT STAINLESS STEEL, 321 S20	1138 LG	3	ROLL UP BUTT JOINT POSITION - ED ON & OF ITEMS 1 OR 3
5	50 x 5 (21 x 5/16) FLAT STAINLESS STEEL, 321 S20	35 LG	4	CROP CORNER.
6	38 x 5 (1 1/2 x 3/16) FLAT STAINLESS STEEL, 321 S20	359 LG	1	
7	38 x 5 (1 1/2 x 3/16) FLAT STAINLESS STEEL, 321 S20	176 LG	4	
8	1 1/2 PITCH SQ. X 12 SWG WIRE MESH, STAINLESS ST. 321	908 x 1171 (L=385) x (CIRCUM=46)	1	
9	1 1/2 PITCH SQ. X 12 SWG WIRE MESH, STAINLESS ST. 321	φ 359	1	

CUTTING LIST IFB 131 DRG. No. F 6427

ITEM No.	MATL.	SIZE	No. OF	REMARKS
1	50 x 3.25 (21 x 10 SWG) FLAT STAINLESS STEEL, 321 S20	1637 LG	2	
2	50 x 3.25 (21 x 10 SWG) FLAT STAINLESS STEEL, 321 S20	137 LG	2	
3	50 x 3.25 (21 x 10 SWG) FLAT STAINLESS STEEL, 321 S20	1500 LG	2	
4	50 x 3.25 (21 x 10 SWG) FLAT STAINLESS STEEL, 321 S20	1138 LG	3	ROLL UP. POSITION BUTT JOINT ON & OF ITEMS 1 OR 3
5	50 x 5 (21 x 5/16) FLAT STAINLESS STEEL, 321 S20	35 LG	4	CROP CORNER.
6	38 x 5 (1 1/2 x 3/16) FLAT STAINLESS STEEL, 321 S20	359 LG	1	
7	38 x 5 (1 1/2 x 3/16) FLAT STAINLESS STEEL, 321 S20	176 LG	4	
8	1 1/2 PITCH SQ. X 12 SWG WIRE MESH, STAINLESS ST. 321	1476 x 1171 (L=585) x (CIRCUM=46)	1	
9	1 1/2 PITCH SQ. X 12 SWG WIRE MESH, STAINLESS ST. 321	φ 359	1	



DO NOT SCALE THIS PRINT

SURFACE TEXTURE OTHERWISE STATED

PROJECTION THIRD ANGLE

MATERIAL No. SEE TABLES ABOVE

FINISH REMOVE ALL BURRS, SHARP EDGES & BREAK CORNERS

TITLE BASKET ASSY - IFB 121 & IFB 131

TECHNE (CAMBRIDGE) LTD.

DIMENSIONS IN MILLIMETRES

TOLERANCES UNLESS OTHERWISE STATED:

2 DECIMAL PLACES (eg. 0.60) ± 0.1

1 DECIMAL PLACE (eg. 0.6) ± 0.2

FRACTIONS (eg. 5/8 OR 5/16) ± 0.4

ANGLES .30 MINS.

MACHINED DIAMETERS TO BE CONCENTRIC TO WITHIN 0.1 T.I.M.

DRILLED & PUNCHED HOLES: ± 0.05 UP TO & INC. 5mm DIA. UNLESS OTHERWISE STATED

SCALE 1:5

DATE 09.06.89

CHECKED

DRAWN

DATE

3RD ANGLE PROJ.

DRG. No. F6426 - 6427

PROPRIETARY NOTE: THIS DRAWING IS THE PROPERTY OF TECHNÉ (CAMBRIDGE) LTD. AND MUST NOT BE REPRODUCED OR DISCLOSED WITHOUT THEIR WRITTEN CONSENT.

NO. OF USED ON

1 IFB 121 (600 6426)

1 IFB 131 (600 6427)

NO. DATE MOD.

5 09 EQU1034

REWORK TO INCLUDE MODS: STRENGTHENED BASE & POSITIONING LIGS