

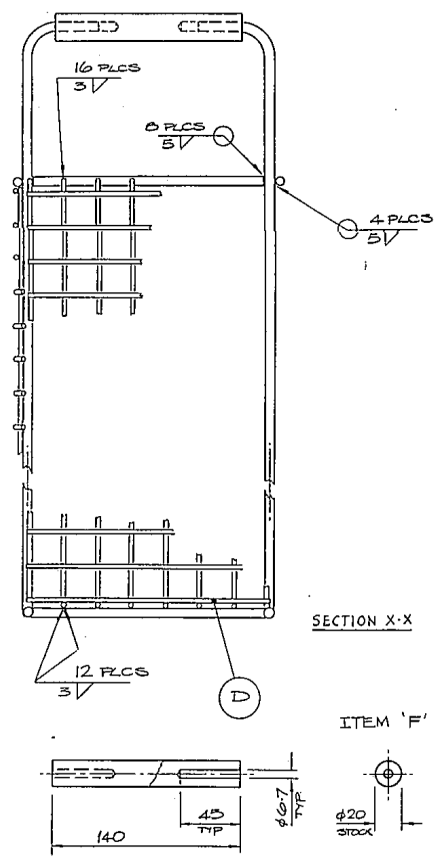
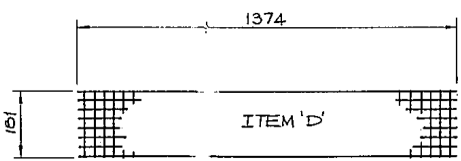
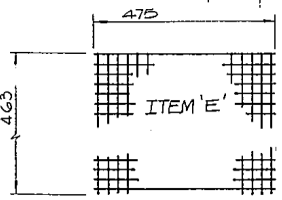
WELD AT ALTERNATE 'VERTICAL' WIRES (10 WELDS)
2 PLS X 10 Ls (40)

ALL WIRE ENDS
3/

WELD AT ALTERNATE 'HORIZONTAL' WIRES (23 WELDS, F5414 / 27 WELDS, F5405)
X 10 Ls (40) 2 PLS

NOTES

1 POSITION ITEMS 'F' (2) ON FRAME BEFORE WELDING.



| ITEM N ^o | N ^o OFF | MAT ^l / MAT ⁿ N ^o |
|---------------------|--------------------|--|
| A | 2 | ROD 321 SS |
| B | 4 | ROD 321 SS |
| C | 2 | ROD 321 SS |
| D | 1 | MESH 321 SS |
| E | 2 | MESH 321 SS |
| F | 2 | 'DELFIN' 5000758 |

PROPRIETARY NOTE
THIS DRAWING IS THE PROPERTY OF TECHNE (CAMBRIDGE) LTD. AND MUST NOT BE USED, COPIED OR DISCLOSED WITHOUT THEIR WRITTEN CONSENT.

| NO. OFF | USED ON |
|---------|---------|
| 1 | IFB-201 |

| | | | |
|-------------------------|-----------|-----------------|----|
| DRG. No. | | FB201 | |
| DATE | 23 JUN 90 | DRAWN | RS |
| DATE | | CHECKED | |
| SCALE | 1:2 | 3RD ANGLE PROJ. | |
| TECHNE (CAMBRIDGE) LTD. | | | |

| | | | | | | |
|-------------------------|-------------------------------------|-------------------------------------|--|--|--|---|
| DO NOT SCALE THIS PRINT | DIMENSIONS IN MILLIMETRES | TOLERANCES UNLESS OTHERWISE STATED: | 2 DECIMAL PLACES (eg. 0.60) ± 0.1 1 DECIMAL PLACE (eg. 0.6) ± 0.2 | FRACTIONS (eg. 5 OR 5/8) ± 0.4 ANGLES .30 MINS. | MACHINED DIAMETERS TO BE CONCENTRIC TO WITHIN 0.1 F.I.M. | DRILLED & PUNCHED HOLES: ± 0.05 UP TO & INC. 5mm DIA. UNLESS OTHERWISE STATED: ± 1% OVER 5mm. DIA. |
| | SURFACE TEXTURE OTHERWISE STATED | PROJECTION THIRD ANGLE | MATERIAL No. 321 WIRE MESH ST. ST. φ 1/2 500 0758 ROD 'DELFIN', φ 20 | FINISH REMOVE ALL BURRS, SHARP EDGES & BREAK CORNERS CLEAN | TITLE BASKET IFB-201 | |