

FLIR T620bx & T640bx

High Performance Thermal Imaging With on-board 5MP Visual Camera, Interchangeable Lens With Autofocus & Large 4.3" Touchscreen LCD

These thermal cameras combine excellent ergonomics with superior image quality, providing ultimate image clarity and accuracy:

Highest IR Resolution in Its Class – Crisp thermal images with 307,200 pixels (640 × 480) for the best detection, pictures, and temperature measurements from long range

New! MSX™ Enhancement – Multi-Spectral Dynamic Imaging adds visible spectrum definition to IR images in real time for excellent thermal detail that instantly highlights problem locations (T640bx only)

New! Field of View (FOV) Match – Option to match the visible camera field of view to the IR FOV for better documentation

New! GPS – Automatically adds location data to images for including in reports (live link in FLIR Tools Reports to Google Maps)

New! Compass – Adds camera pointing direction to every image for additional location documentation (T640bx only)

Programmable Button – Provides easy access to favorite functions

Wi-Fi Connectivity – Send images/data to smartphones and tablets and share information with the FLIR Tools Mobile for Apple® and Android™ (live video streaming & remote control via the mobile device)

Accuracy – Calibrated within +/- 2°C or +/- 2% of reading

Temperature Range – measures to 1202°F (650°C)

Scalable P-i-P and Thermal Fusion – Blend thermal with visible light images on-screen; includes picture-in-picture window sizing

Humidity, Dew Point, & Insulation Alarms – Alerts user when it detects moisture intrusion and insulation issues

Multiple Measurements – 10 measurement spots, 5 box areas, Delta T temperature differential, isotherm, & auto hot/cold markers

METERLINK® – Wirelessly transmit vital diagnostic data from clamp and moisture meters directly to the camera for annotating thermal images to further support findings and decisions

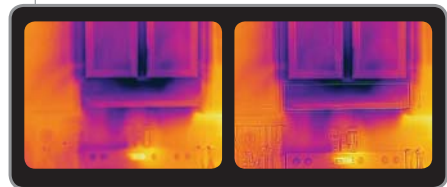
Annotation – Add voice comments via Bluetooth headset and text notes from the touchscreen keypad. New! T640bx has image sketch feature to draw circles and pointers on IR/Visual stored images

InstantReport – Create PDF document directly from the camera

Includes – (see back specification chart for included accessories)



Wi-Fi Connectivity



Original IR Image on the Left and with MSX™ Enhancement on the Right image (available on T640bx model)



Built-in 5MP Digital Camera, LED Lamps, Laser Pointer, Diopter, Image Capture Button and Auto/Manual focus capability, 120° Rotating Lens & digital Zoom



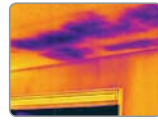
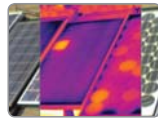
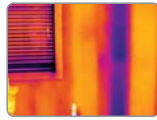
Thermal Fusion is an IR image shown above, below or within temperature interval blended onto a digital image



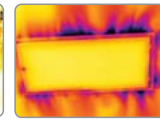
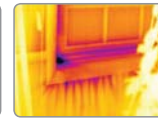
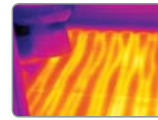
Sketch on IR — allows you to draw circles and pointers on IR/Visual stored images (T640bx only)



Applications



Water Damage — Water leak on ceiling, gutter, & roof top



Insulation — Energy Loss, Home Inspection, and HVAC

Imaging Specifications

FEATURES	FLIR T620bx	FLIR T640bx
Thermal sensitivity (N.E.T.D)	<0.04°C at 30°C	<0.035°C at 30°C
Zoom	4X Continuous	8X Continuous
Focus	Manual or Automatic (one shot)	Continuous, Manual or Automatic (one shot)
LCD Image Sketch	—	Draw on stored images right on touchscreen
Multi-Spectral Dynamic Imaging (MSX)	—	IR image with enhanced detail presentation
Viewfinder	—	Color Viewfinder for viewing images in bright or sunny conditions
Measurement Presets	—	Presets for standard measurements
Profile Measurement Analysis	—	Shows a live graph of temperatures across a line on the image
Compass	—	Adds camera pointing direction to each image
COMMON FEATURES		
Temperature range	-40°F to 1202°F (-40°C to 650°C)	
Frame Rate	30Hz	
Field of view/Minimum focus distance/FOV Match	25° x 19° / 0.82ft (0.25m) / Field of View Match where Digital Image FOV adapts to the IR lens	
Detector Type - Focal plane array (FPA) uncooled microbolometer	640 x 480 pixels	
Spectral range	7.5 to 14µm	
Lens	25° or 45° models (optional 7°, 15°, 25°, 45°, 80°, Close up 100, 50µm lenses available)	
Display	Built-in touch-screen 4.3" color LCD (800 x 480 pixels)	
Image modes	Thermal/Visual/Fusion/P+P (Resizable and movable) and Thumbnail Gallery	
Automatic image adjustment	Continuous/manual; linear or histogram based; possible to lock max, min or span temperature	
Manual image adjustment	Level/span/max/min	
Image Storage	1000 radiometric JPEG images (SD card memory)	
Image annotation	Voice (60 sec); text comments, Sketch	
Periodic image storage	7 seconds to 24 hours (IR) and 14 seconds to 24 hours (IR and visual)	
Video Lamp	Bright LED lamp	
Laser Classification/Type	Class 2/Semiconductor AlGaInP Diode Laser: 1mW/635nm (red)	
Set-up controls	Mode selector, color palettes, configure info to be shown in image, local adaptation of units, language, date and time formats, and image gallery	
Measurement modes	10 Spotmeters, 5 Box areas, Isotherm, Auto hot/cold spot, Delta T	
Alarm Alerts	1 Humidity alert, 1 Dew Point alert, and Insulation alert	
Measurement correction	Reflected ambient temperature & emissivity correction	
GPS	Location data automatically added to every image from built-in GPS	
Video Recording in Camera and Video Streaming	Non-radiometric IR-video recording (MPEG-4 to memory card), Visual and Radiometric IR-video streaming (Full dynamic to PC using USB or Wi-Fi), and Non-radiometric IR-video streaming (MPEG-4 using Wi-Fi and uncompressed colorized video using USB)	
Battery Type/operating time	Li-Ion/ 2.5 hours, Display shows battery status	
Charging system	In camera AC adaptor/2 bay charging system	
Shock / Vibration / Encapsulation; Safety	25G, IEC 60068-2-29 / 2G, IEC 60068-2-6 / IP54; EN/UL/CSA/PSE 60950-1	
Dimensions/Weight	5.6 x 7.7 x 3.7" (143x196x94mm)/2.87lbs (1.3kg), including battery	
Accessories included	SD Memory Card, 100-260V AC adaptor/charger, two Li-Ion rechargeable batteries, 2-bay battery charger, power supply (with multi-plugs), FLIR Tools™ software, USB cable, video cable, Bluetooth® headset, lens cap, neckstrap, and hard case	

Ordering Information

55901-4302	FLIR T620bx Thermal Imaging IR Camera (640x480) with Wi-Fi and standard 25° Lens
55901-4303	FLIR T620bx Thermal Imaging IR Camera (640x480) with Wi-Fi plus 45° Lens
55902-4502	FLIR T640bx Thermal Imaging IR Camera (640x480) with Wi-Fi and standard 25° Lens
55902-4503	FLIR T640bx Thermal Imaging IR Camera (640x480) with Wi-Fi plus 45° Lens

ACCESSORIES

T198055	Li-Ion Rechargeable Battery
T910490	Cigarette Lighter Adapter Kit, 12VDC (1.2m cable)
T198126	2-Bay Battery Charger including Power Supply (multi plugs)
T911048	Camera Pouch Case



BOSTON

FLIR Systems, Inc.
PH: +1 866.477.3687

PORTLAND

Corporate Headquarters
FLIR Systems, Inc.
PH: +1 866.477.3687

CANADA

FLIR Systems, Ltd.
PH: +1 800.613.0507

MEXICO/LATIN AMERICA

FLIR Systems Brasil
Av. Antonio Bardella
PH: +55 15 3238 8070



Warranty: 10-Year
Detector Protection
5-Year Battery
2-Year Parts & Labor
(when camera is registered
within 60 Days)