

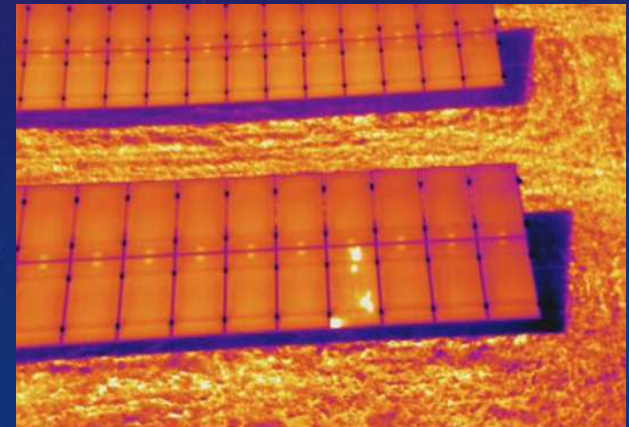
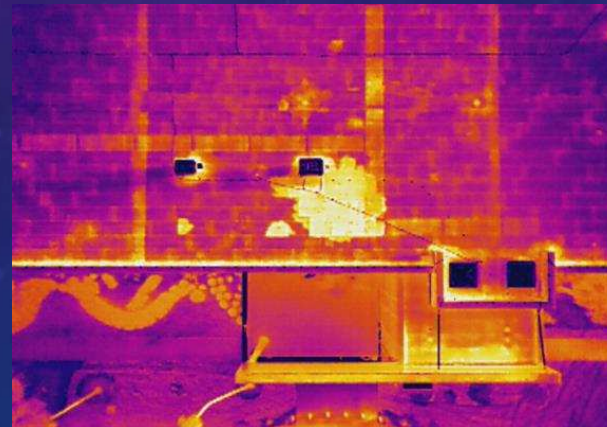


# FLIR MATRICE 200 V2, MATRICE 210 V2 AND MATRICE 210 V2 RTK OVERVIEW

VERSIONS AS OF MARCH 2019

INSTRUMENTS SOLUTIONS

FIRST RESPONDER  
UTILITY  
BUILDING  
SOLAR



The background is a dark blue gradient with a subtle pattern of white dots. On the left side, there are several overlapping circular elements. A large, semi-circular scale with numerical markings from 140 to 260 in increments of 10 is visible. Other circles include dashed lines, solid lines, and arrows indicating clockwise or counter-clockwise rotation. The overall aesthetic is technical and futuristic.

# INSTRUMENTS 2019 PRODUCT OFFERING

UAS



# ZENMUSE XT2 - AIRFRAMES



Matrice 200 V2

- Single Gimbal plus FPV
- Cendence S Remote
- **FLIR adds 7.85" Crystal Sky tablet**
- Includes 2 TB55 Batteries



Matrice 210 V2

- FPV
- Dual Downward Gimbal
- Cendence S RC
- 7.85 Crystal Sky Tablet ULTRA
- 2 TB55 Batteries



Matrice 210 V2-RTK

# MATRICE 200 V2 SERIES IMPROVEMENTS



## **CENDENCE S RC**

Featuring OcuSync 2.0 system supporting automatic dual frequency band switching and extends flight range to up to 8km.



## **Calibration**

Adjust the drone's center of gravity in the DJI Pilot app based on the payload configuration.



## **1-Click Upgrade**

The remote controller, drone, payloads (Excluding XT2), RTK module/base station can be upgraded simultaneously in DJI Pilot or DJI Assistant 2



## **Anti-Collision Beacon**

Top and bottom anti-collision beacons, the V2 drones are visible at night or in lowlight conditions.

# NOTEWORTHY CHANGES

- M200 V2 Series DOES NOT support TB50 batteries. TB55 high capacity is the only battery supported
- CENDENCE RC's are not interchangeable between V1 and the V2 Matrice 200 series.
  - Matrice M200/210/210RTK only works with original Cendence
  - M200 V2 Series only works with Cendence S with OccuSync
  - All three M200 V2 Series ship with the Cendence S
- M210/M210RTK V2 Series DO NOT include the upward gimbal connector or external GPS modules that were included in V1 kits. These are now optional accessories.



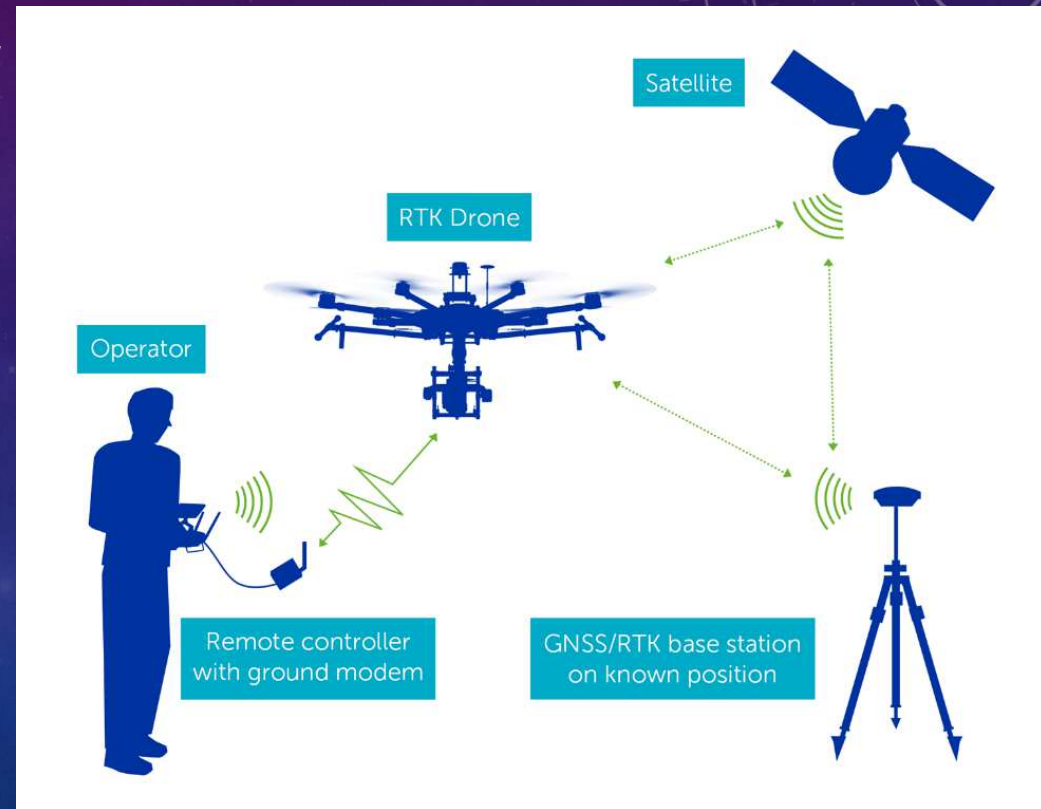
# WHAT IS REAL TIME KINETIC (RTK)

RTK is a secondary GPS signal providing location data to the drone from a base station away from RF/EMI or with clear view of the sky

## Benefits of RTK

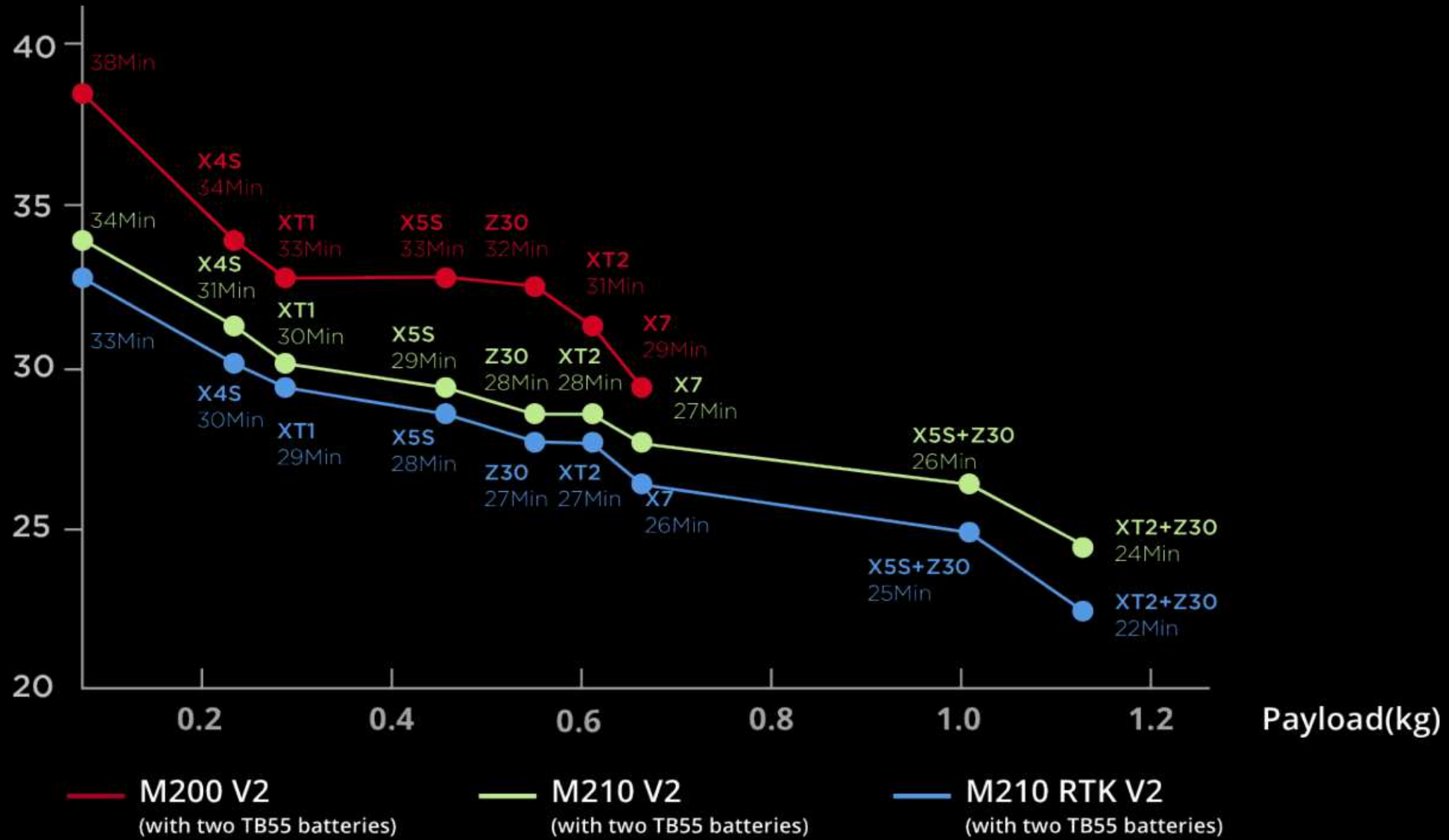
- RTK can provide pinpoint (centimeter) accuracy of the aircraft during flight.
- RTK provides protection from interference from radio frequency (RF) and electromagnetic fields (EMF). Interference of this kind may occur when flying your aircraft close to power lines, radio towers, large metal structure, etc.
- Another useful feature of RTK is the accurate geotagging of the information the aircraft captures. This includes both images and video which will be tagged with the aircraft's location for future use.

Source: David Atkinson- Heliguy Blogger  
<https://www.heliguy.com/blog/2017/10/04/benefits-of-rtk/>





Flight Time(Min)





# DRONE AND XT SELECTION GUIDE BY APPLICATION

		Airframe			XT2 Model- All Models Radiometric, 30hz or 9Hz Based on Region					
		M200	M210	M210RTK	640 13mm	640 19mm	640 25mm	336 9mm	336 13mm	336 19mm
First Responder	<u>Search and Rescue</u>	✓	✓✓		✓✓	✓		✓		
	<u>Suspect apprehension</u>	✓	✓✓		✓✓	✓		✓		
	<u>Fire-Structure</u>	✓	✓✓		✓✓			✓		
	<u>Fire- Wildland</u>	✓✓	✓✓		✓✓					
Building	<u>Roofing or Structure</u>					✓				
	<u>Moisture</u>	✓✓	✓✓		✓✓					
	<u>Energy Efficiency</u>	✓✓	✓✓		✓✓			✓		
	<u>HVAC roof top systems</u>	✓✓	✓✓		✓✓			✓		
Utility	<u>Manufacturing Plants</u>	✓✓	✓✓		✓✓	✓		✓		
	<u>Solar</u>	✓	✓✓	✓	✓✓	✓				
	<u>Transmission, distribution, substations</u>		✓	✓✓		✓✓	✓✓		✓	✓
	<u>Cell &amp; Radio tower</u>			✓✓		✓✓	✓✓			
Other	<u>Utility Plant- smoke stacks, cooling towers, hot spots in stock piles</u>									
	<u>Above ground mining</u>	✓	✓✓		✓✓	✓✓		✓		
	<u>Conveyor belt/bearings</u>	✓✓	✓		✓	✓✓				
	<u>Concrete delamination</u>	✓✓	✓		✓✓	✓✓		✓✓		
	<u>Large Campus (steam pipes)</u>	✓✓	✓		✓✓			✓✓		
	<u>Wildlife Management</u>	✓✓	✓		✓✓			✓		

✓ FLIR recommended

✓✓ Highly Recommended

# NEW KITS WITH V2 & XT2



**M200 V2 XT2 R**  
336-9mm

**M200 V2 XT2 R**  
640x512-13mm, 19, or 25mm

**M210 V2 XT2 R**  
640x512-13mm, 19, or 25mm

**M210 V2 RTK XT2 R**  
640x512-13mm, 19, or 25mm

- M200 V2 Airframe
- XT2 336x256
- CENDENCE™ S
- 7.85" Crystal Sky
- 2 TB55 Batteries
- FLIR Thermal Studio

- M200 Airframe
- XT2 640x512
- CENDENCE™ S
- 7.85" Crystal Sky
- 2 TB55 Batteries
- FLIR Thermal Studio

- M210 Airframe
- XT2 640x512
- CENDENCE™ S
- 7.85" Crystal Sky ULTRA
- 2 TB55 Batteries
- FLIR Thermal Studio

- M210RTK Airframe
- XT2 640x512
- CENDENCE™ S
- 7.85" Crystal Sky ULTRA
- 2 TB55 Batteries
- FLIR Thermal Studio

1st Responder  
Home Inspection

1st Responder  
Building Inspection  
Utility

1st Responder  
Building Inspection  
Utility  
Dual Camera Opps.

Utility  
Structure Inspection  
High Precision GPS  
Dual Camera Opps.

Model

Included items

Market

# M200 V2 KIT- WHAT'S IN THE BOX



Mobile device holder &  
Crystal Sky adapter



CENDENCE S RC + battery



WB37  
Battery

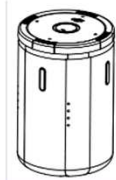
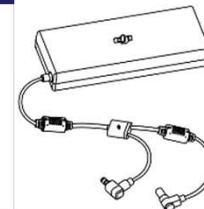
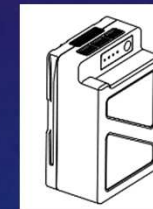
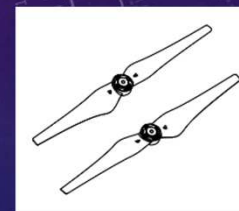


7.8" Crystal Sky + battery



XT2 Gimbal

Airframe



2 TB55 Batteries, charger,  
cables, 64GB Micro SD, 4  
propellers, other cables and  
accessories

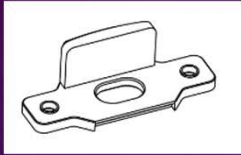
FLIR Thermal Studio Software



DJI Case

ADDITIONAL BATTERIES, VISUAL CAMERAS, ACCESSORIES CAN BE ADDED TO ANY PACKAGE

# M210 V2 KIT- WHAT'S IN THE BOX

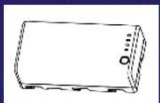


Mobile device holder &  
Crystal Sky adapter



CENDENCE S RC

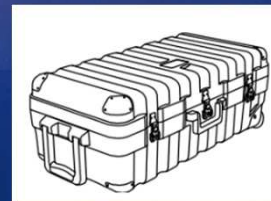
7.8" Crystal Sky



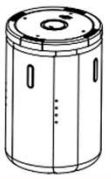
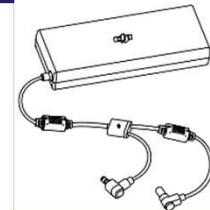
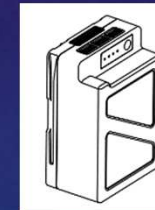
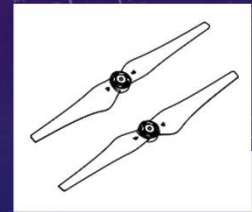
(2) WB37  
Battery &  
charging hub



XT2 Gimbal



Airframe



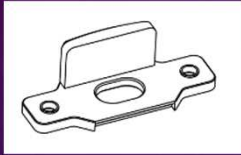
2 TB55 Batteries, charger,  
cables, 64GB Micro SD, 4  
propellers, other cables and  
accessories

FLIR Thermal Studio Software

ADDITIONAL BATTERIES, VISUAL CAMERAS, ACCESSORIES CAN BE ADDED TO ANY PACKAGE



# M210 V2 RTK KIT- WHAT'S IN THE BOX



Mobile device holder &  
Crystal Sky adapter



CENDENCE S RC

7.8" Crystal Sky



(2) WB37  
Battery &  
charging hub

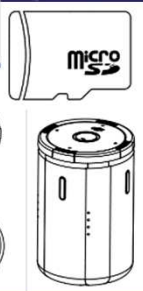
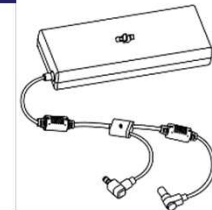
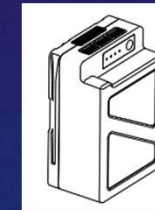
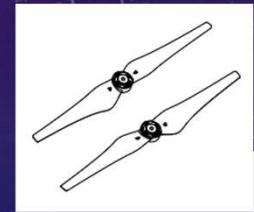


XT2 Gimbal

DJI Case



Airframe



2 TB55 Batteries, charger,  
cables, 64GB Micro SD, 4  
propellers, other cables and  
accessories

FLIR Thermal Studio Software

ADDITIONAL BATTERIES, VISUAL CAMERAS, ACCESSORIES CAN BE ADDED TO ANY PACKAGE