

# Flat Panel Motorized Lifting Mount Series

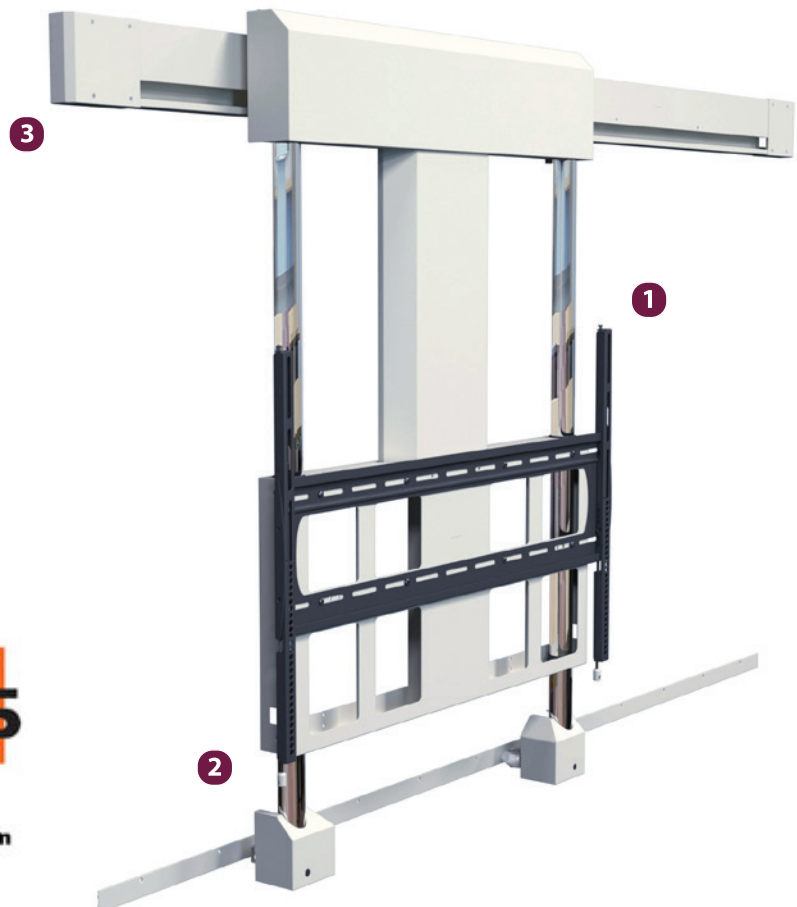
Model: **FPS-200, FPS-300**

Typical Screen Sizes: 50-90 in. Weight Capacity: 250 lb / 113.6 kg.

## Features

- 1** Works with interactive display panels
- 2** Motorized lifting and lowering system with 18" of adjustment
- 3** FPS-300 includes 8 feet of track
  - FPS-300 chosen as winner of rAve's 2012 Best of InfoComm Award
  - Built in lateral shift on wall plate for the FPS-300
  - Integrated cable management
  - Great option for educational use in the classroom or corporate training
  - VESA mounting patterns

The FPS Flat Panel Lifting Mount series provides a simple stationary or mobile wall mounted unit that utilizes a motorized lifting and lowering system to help gently guide the display to the desired height. Mounting over the top of a whiteboard, the FPS Series can be easily adjusted to the desired vertical position and provide a great tool for interactive presentations or classroom learning environments. The FPS-300 also easily glides the display across the whiteboard and rolls the display into place.

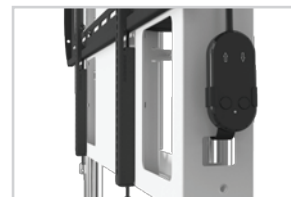


# Touchboards

205 Westwood Ave, Long Branch, NJ 07740  
 Phone: 866-94 BOARDS (26273) / (732)-222-1511  
 Fax: (732)-222-7088 | E-mail: sales@touchboards.com



FPS series offers motorized lift and lower with 18" of adjustment



Easy remote controlled access to adjust panel to desired height



FPS-EXT Extension Kit available for FPS-300 to expand track to any desired length



# Flat Panel Motorized Lifting Mount Series

## FPS-200, FPS-300

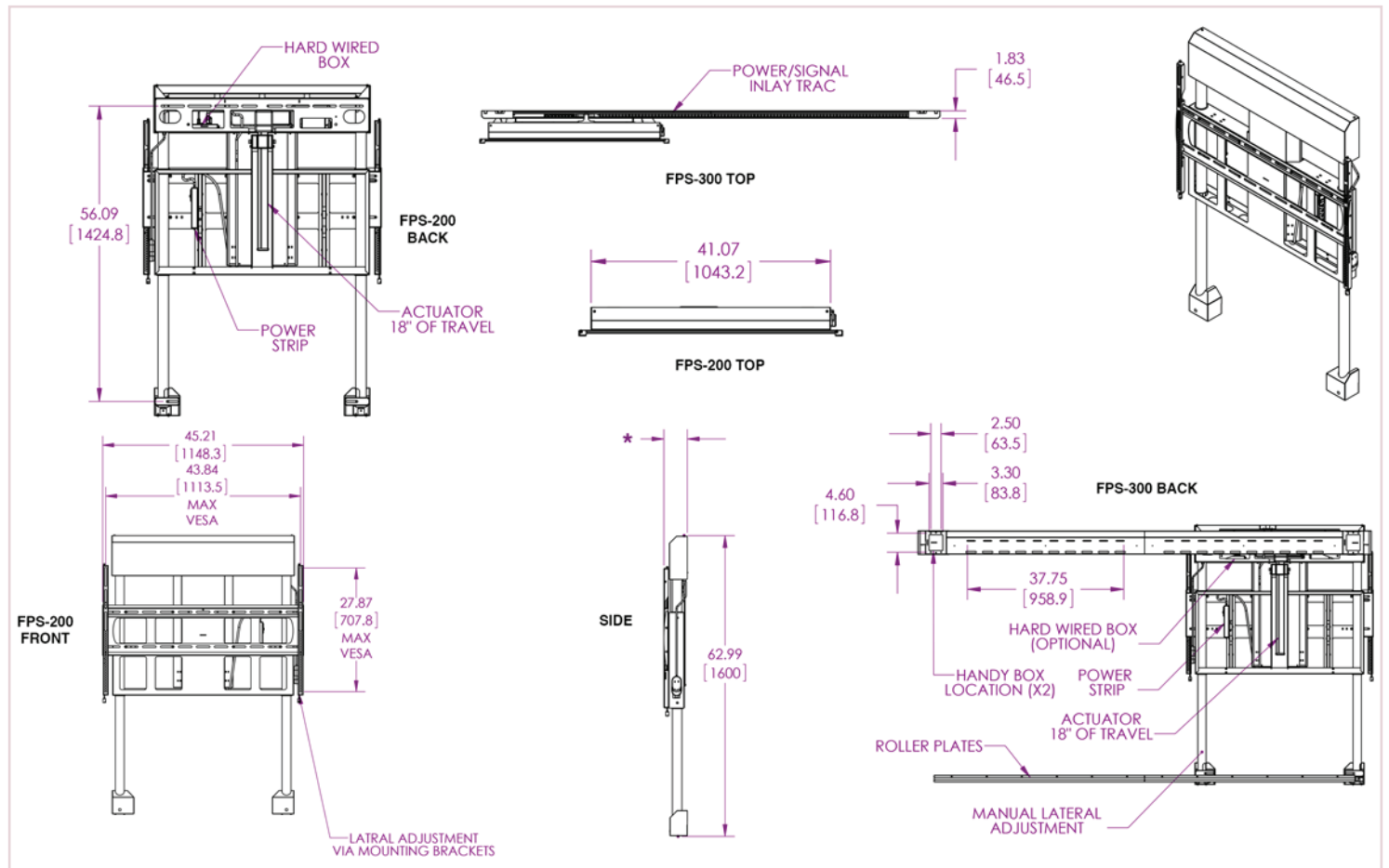
### Specifications

Width x Height x Depth*		Mounting Pattern	
FPS-200	45.21 x 62.99 x 4.89 in.   1148.3 x 1600 x 124.1 mm	200 x 200 mm (Min) x 600 x 400 mm (Max)	
FPS-300	45.21 x 62.99 x 7.72 in.   1148.3 x 1600 x 196.2 mm	200 x 200 mm (Min) x 600 x 400 mm (Max)	
Total Weight Capacity		Screen Sizes	
250 lb.   113.6 kg		FPS-200	50-90 in.
250 lb.   113.6 kg		FPS-300	65-90 in.
Weight Capacity / Mount		Warranty	
250 lb.   113.6 kg		Limited Lifetime	
250 lb.   113.6 kg		Limited Lifetime	
Color		Warranty	
White		Limited Lifetime	
White		Limited Lifetime	

### Accessories

 <p>Extension Kit for Flat Panel Slider <b>FPS-EXT</b></p>	 <p>18 inch Right-Angle Power Cord <b>PSD-ACR18</b></p>	 <p>Single Equipment Shelf <b>SHLF-EQ</b></p>
--	--	--

### Architectural Drawing



Specifications subject to change without notice

T: 800.368.9700 | [www.mounts.com](http://www.mounts.com) | 1321 S. State College Blvd., Fullerton, CA 92831 USA



Visit [mounts.com](http://mounts.com) to see the complete line of AV solutions from Premier Mounts, including flat-panel mounts, projector mounts, carts/stands, and a full assortment of accessories.  
© 2014 Premier Mounts. All rights reserved. Rev. 01-14-06

Rev. 02-15-02