

## AT-A-GLANCE



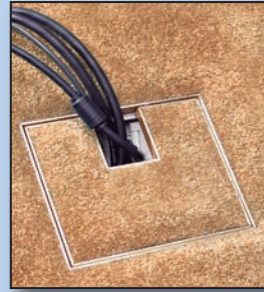
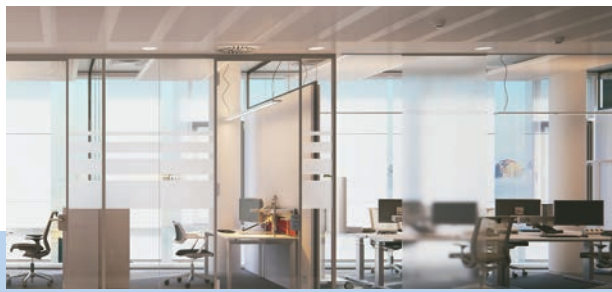
Audio, Video, Signal Management and Infrastructure Technologies

# FLOOR BOXES

## Bringing Elegant Cable Access To Your Infrastructure.

A unique variety of boxes to handle stage, raised access, poured concrete or retro-fit flooring applications. FSR matches the décor of your installation with solid construction, beautiful carpet rims, flanges, and available accessories.

Our Fire-Resistant floor solutions expand the versatility of our floor box line by providing enhanced, fire-resistant versions of our existing products. Our FRK kits are UL listed and comply with UL 263 Fire Resistance Ratings.



**FIRE RATED**



# WALL BOXES



## Protect and Secure your Infrastructure Connections

Indoor and outdoor wall boxes protect your wall plates, panels and connections elegantly and securely.

The PWB-FR-450 is the industry's only fire-rated box of this size. Every wall mounted display needs a PWB!



PWB-100



PWB-250



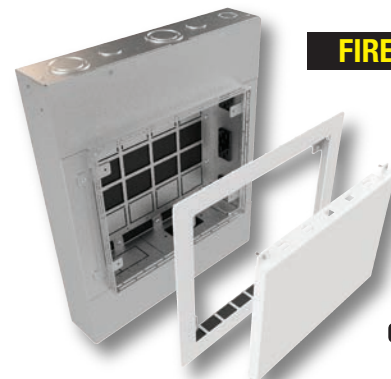
PWB-353

 **WEATHER BOX**



**NEW**

OWB-500P



**FIRE RATED**



PWB-FR-450 Large Project Wall Box

# HUDDLEVU



From a single computer, to a full classroom or multi-media boardroom, HuddleVU will distribute and process with cost-effective quality.

We created 3 HuddleVU Works bundles. Each bundle comes with all the essentials. You select the height and finish of your table, and then add the flat screen. If you want to be creative, each bundle has a range of options. All HuddleVU Works systems are shipped with the table box mounting brackets, AC distribution, and wire management installed. All holes for the table boxes are pre-cut!

Larger collaboration systems and the award winning Dugout are also available!



### HuddleVU Works - Mini

The "Mini" bundle is perfect for 2 to 4 users. A 4 user HV-1000 including the smart looking table box with color coded cables, brackets and electronics are included.



### HuddleVU Works - Classic

This system is your "go to" for up to 6 users. The Classic bundle comes with one HV-T6 table box, two HV-T3 table boxes, 2 HDMI switchers, control unit, and cables.




### HuddleVU Works - Platinum

Designed for ultimate control and up to 7 users. A FLEX touch panel control system is built into the T6-FLEX table box. Two HV-T3 table boxes, scaling switcher, control unit, and cables are included.

# TABLE BOXES



A wide variety of table boxes that are unique and upscale, meeting the aesthetic demands of today's consultants, architects and clients. Brass, black, bronze and nickel finishes, a variety of sizes, shapes, and accessories are available from stock.

 This symbol indicates the device is **RETRACTOR Ready** and accepts the number of retractors shown in the circle.



Patent No. US 6,881,080 B2



Patent Number US D553,306 S



P: 800.332.FSR1 • W: fsrinc.com • E: sales@fsrinc.com



# CEILING BOXES

Now you can remove the unsightly equipment boxes hanging off projector poles and mount them in this architecturally-designed ceiling enclosure. Many styles, various price ranges, and "Smart and Green" modules make these boxes perfect for classrooms, boardrooms, meeting rooms and public spaces. These are your equipment racks for ceilings and walls.



# ROOM CONTROL & COMBINING



**FSR makes room control user friendly and cost effective!**

## FLEX-LT - ROOM CONTROL AT YOUR FINGERTIPS

- 3.5" Diagonal Color LCD Touch Screen
- Self-contained with many features and models
- Wall or desk mounting
- Up to 4 serial and 4 IR Ports (select models)
- Multi Command Scripting, Conditionality, Flags and Counters
- Built In Clock / Calendar with Scheduler
- CU Configuration Utility



**FLEX-I016 I/O Expansion Unit**  
Provides 16 Ground Closure Inputs, 16 Lamp Outputs and, RS-232 & IP Communication to expand the control capabilities of FLEX as well as interfacing with any 3rd party control system.

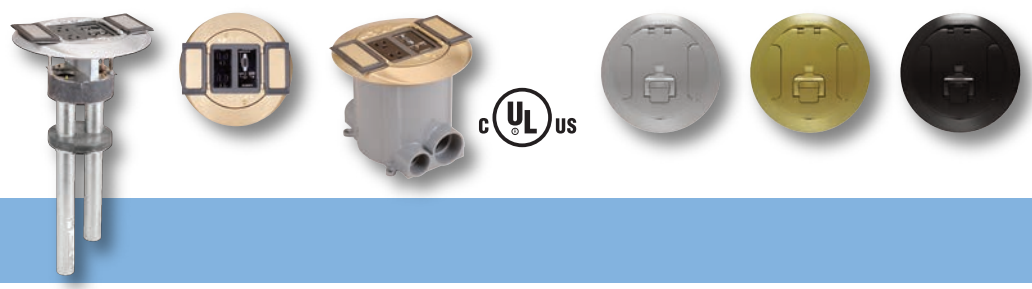


**ML-116 SIXTEEN ROOM COMBINING**  
Join several systems together and control up to 256 Rooms!



**BMS-1032 Background Music System**  
Select between 10 stereo audio sources from an elegant wall plate.

# SMART FIT (POKE-THRU)



## It's Not Just Power Anymore!

FSR SmartFit is an innovative system that provides flexible AV solutions for fire rated "poke-thrus". The SmartFit system features a universal cover assembly and multiple sub-plates that install on the fire rated "poke-thrus". NOW AVAILABLE IN 4", 6" & 8" SIZES.



P: 800.332.FSR1 • W: fsrinc.com • E: sales@fsrinc.com



# SWITCHING, SCALING & SIGNAL PROCESSING



## Digital Video Solutions



**DV-HDA-12AUD**  
1x2 HDMI with extracted audio output



**DV-HSW4K-41**  
4x1 HDMI Digital Switcher



**DV-HMSW4K-88**  
8-Input x 8-Output HDMI Matrix Switcher



**DV-HDA-14AUD**  
1x4 HDMI Distribution Amp with extracted audio output



**DV-HSW-21A**  
2x1 HDMI VGA Switcher



**DV-MFSW-21A**  
2x1 HDMI / VGA Switcher



**DV-MFSS-71**  
7 x 1 Multi-Format Glitch-free Scaling Switcher



**DV-MFMV-74**  
7 x 1 MultiVU Scaling Windowing Switcher



**Compass 3.0**  
Presentation Switcher Family



**DV-PC2HD**  
PC to HDMI Converter



**Digital Ribbon Cables**  
High speed, high definition HDMI signal transmission over distances of up to 325 ft.

## HDBaseT™ EXTENDERS



### 70 meter



**HD-H70-SP** — HDBaseT 70 Meter Slim-Pack Transmitters & Receivers Set

### 100 meter



**HD-H-SP-Tx** — 100 Meter HDBaseT Slim-Pack Transmitter



**HD-HPC-SP-Tx** — 100 Meter HDBaseT Slim-Pack HDMI & VGA Switcher Transmitter



**HD-H-SP-Rx** — 100 Meter HDBaseT Slim-Pack Receiver



**HD-HAUD-SP-Rx** — 100 Meter HDBaseT Slim-Pack Receiver with Analog Audio Output



**HD-HWP-TX**  
100 Meter HDMI Transmitter Wall Plate



**HD-HPCWP-TX**  
100 Meter HDBaseT™ HDMI & VGA Switcher Transmitter Wall Plate

FSR is now stocking **West Penn HDBaseT Certified Category 6A Plenum Cable Assemblies** in pre-terminated lengths from 50' to 330' (15 meter to 100 Meter). These are plenum rated cables that come in specific lengths with the shielded connectors already attached and will work with all of our FSR HDBaseT™ Products.

# IPAD MOUNTS & CHARGERS

The iPad® wall mount is designed for strength, practicality, and fits many versions of the iPad leaving no visible hardware. We use tamper resistant hardware for security, symmetrical hole patterns provide rapid mounting in portrait or landscape mode. Attractive openings for cable egress are provided. Standard colors are silver and black. As an added value we will print a client logo on the front FREE with orders of 10 pieces or more.

## The Perfect PoE/USB Charger

You can power and charge the iPad from a PoE-Ethernet drop without the need for AC line power. Mount this small cube in a 2-gang wall box behind the FSR iPad wall mount. The PoE / USB charger will operate and charge the iPad supporting Apple®'s charging standard. The PoE / USB Charger will also notify the iPad that it is connected to a charger avoiding annoying pop-ups.

## DC Powered USB Chargers

Our DC Powered USB chargers for your smart devices come in a variety of form factors to meet your requirements. The chargers incorporate the necessary firmware to communicate with your device and provide it the correct charging wattage, up to a full 12 watts. All models come complete with a universal power supply.



PoE/USB Charger



IT-USB-CHRG

IPS-D717S

SS-USB-CHRG

SS-USB-CHRG-PS6

DC Powered Chargers

# LEGACY PRODUCTS



**RGB-HV-2** Ultra High Bandwidth RGB Video Distribution Amplifiers in 1x2 through 1x16. (RGB-HV-2 shown)



**CDA Series** High Resolution 1x2 through 1x6 Distribution Amplifier with or without audio. (CDA-2 and CDA-4EQ shown)



**PFD Pathfinder Matrix Switchers** Available in 4x2 through 32x32 with or without audio.



**CVD-4/6** Composite Video Distribution Amplifier



**IT-VCM VOLUME CONTROL MODULE**



**IT-A25 AUDIO AMP MODULES**

# INTELLIGENT PLATE SOLUTIONS



The IPS family of interconnect solutions offers a comprehensive selection of accessories, available in white, ivory or black. Simply select a plate that fits your application and available space. Then select your internal connector plate. IPS Plates come with a lifetime warranty. We offer FREE standard labeling. Visit our web site and drag and drop your solutions with IPS Designer.

All FSR Table, Floor, Wall and Ceiling Box CAD drawings are available on our website. For assistance in selecting the proper box to hold your power, data voice, video, etc., please call us at 1-800-332-FSR1 (3771).



© iPad is a registered trademark of Apple Inc., registered in the US and other countries. The products contained on these pages are not endorsed by or affiliated with Apple Inc.



HDBaseT™ and the HDBaseT Alliance logo are trademarks of the HDBaseT Alliance.™



244 Bergen Boulevard · Woodland Park, NJ 07424  
800.332.FSR1 · 973.785.4347 · F: 973.785.3318  
W: fsrinc.com · E: sales@fsrinc.com

LIT1188L

© 2016 FSR, Inc. All Rights Reserved