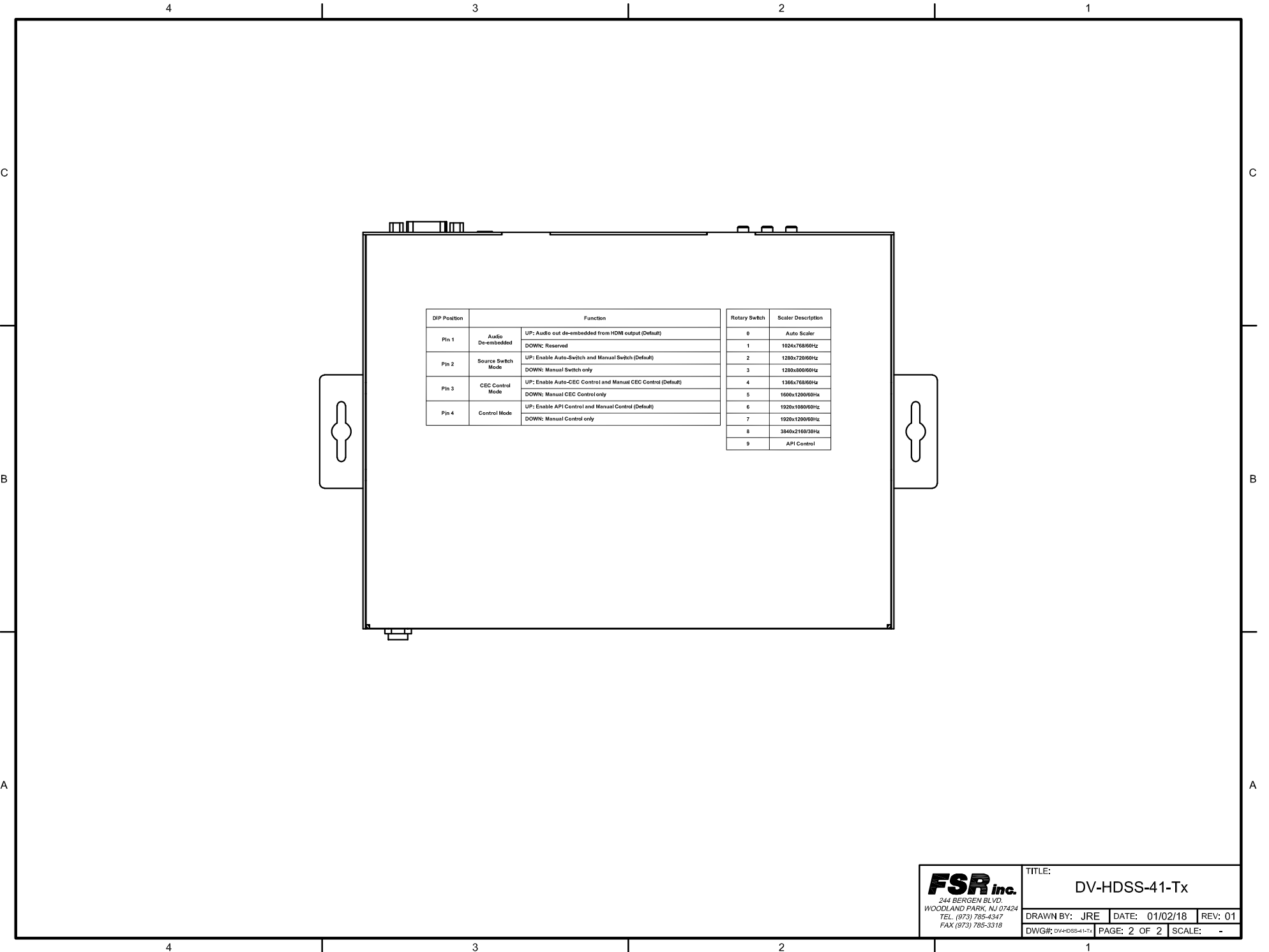


<b>FSR inc.</b> 244 BERGEN BLVD. WOODLAND PARK, NJ 07424 TEL. (973) 785-4347 FAX (973) 785-3318	TITLE: DV-HDSS-41-Tx		
	DRAWN BY: JRE	DATE: 01/02/18	REV: 01
	DWG#: DV-HDSS-41-Tx	PAGE: 1 OF 2	SCALE: -



DIP Position		Function	Rotary Switch	Scaler Description
Pin 1	Audio De-embedded	UP: Audio out de-embedded from HDMI output (Default)	0	Auto Scaler
		DOWN: Reserved	1	1024x768/60Hz
Pin 2	Source Switch Mode	UP: Enable Auto-Switch and Manual Switch (Default)	2	1280x720/60Hz
		DOWN: Manual Switch only	3	1280x800/60Hz
Pin 3	CEC Control Mode	UP: Enable Auto-CEC Control and Manual CEC Control (Default)	4	1366x768/60Hz
		DOWN: Manual CEC Control only	5	1600x1200/60Hz
Pin 4	Control Mode	UP: Enable API Control and Manual Control (Default)	6	1920x1080/60Hz
		DOWN: Manual Control only	7	1920x1200/60Hz
			8	3840x2160/30Hz
			9	API Control

**FSR inc.**  
 244 BERGEN BLVD.  
 WOODLAND PARK, NJ 07424  
 TEL: (973) 785-4347  
 FAX (973) 785-3318

TITLE: DV-HDSS-41-Tx		
DRAWN BY: JRE	DATE: 01/02/18	REV: 01
DWG#: DV-HDSS-41-Tx	PAGE: 2 OF 2	SCALE: -