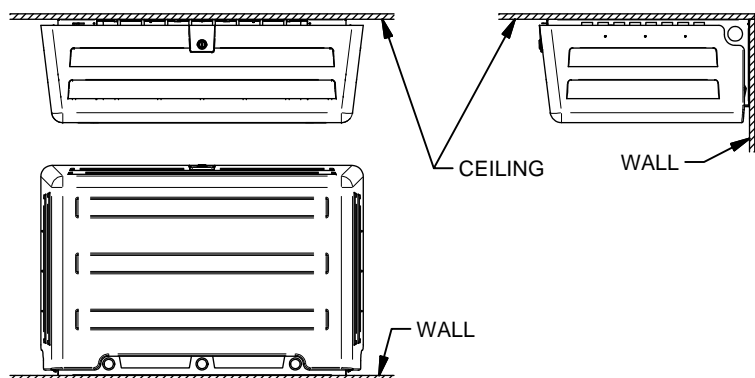


1. DETERMINE LOCATION OF TS-400 ASSEMBLY AND REMOVE APPROPRIATE KNOCK-OUT PANELS FOR WIRES/CONDUITS ROUTED TO THE TS-400 UNIT. USE THE TS-400 CHASSIS AS A TEMPLATE TO TRANSFER THE .328 DIAMETER HOLE PATTERN TO WALL AND CEILING. HOLES USED TO SECURE CHASSIS WILL BE DETERMINED ON SITE BY INSTALLER. INSTALLER TO PROVIDE HARDWARE OR USE SUPPLIED TOGGLE BOLTS.

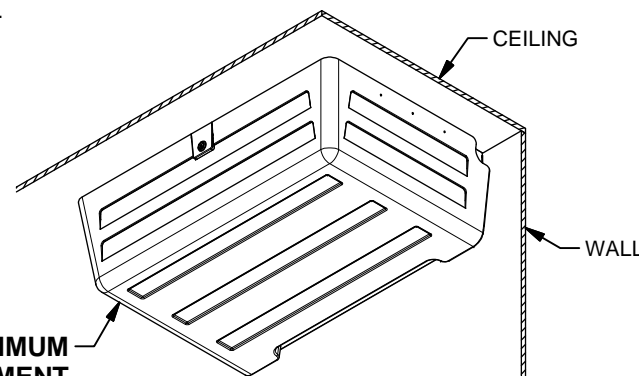
SHEET ROCK (1/2" MIN) / METAL STUD APPLICATIONS - WALL ANCHOR LOCATIONS - 6 TOP ROW, 2 BOTTOM ROW, MINIMUM 16" SPAN

SHEET ROCK (1/2" MIN) / WOOD STUD APPLICATIONS - LAG BOLTS WITH WASHERS MAY BE USED TO INSTALL TO WOODEN STUDS. WALL ANCHOR LOCATIONS - 2 TOP ROW, 2 BOTTOM ROW, MINIMUM 16" SPAN

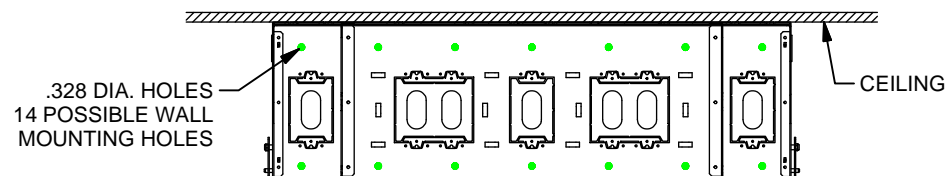
BLOCK CONSTRUCTION - USE APPROPRIATE ANCHORS OR PROVIDED TOGGLE BOLTS. WALL ANCHOR LOCATIONS - 2 TOP ROW, 2 BOTTOM ROW, MINIMUM 16" SPAN.



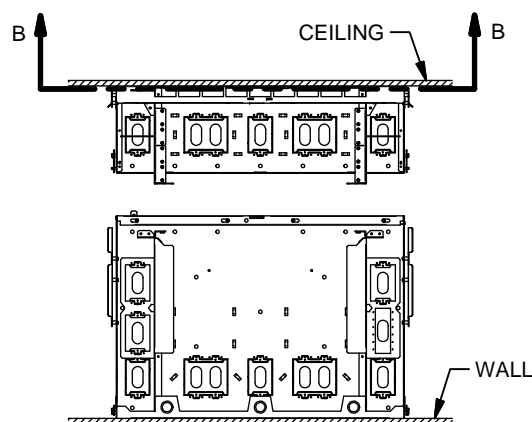
TS-400 WITH COVER



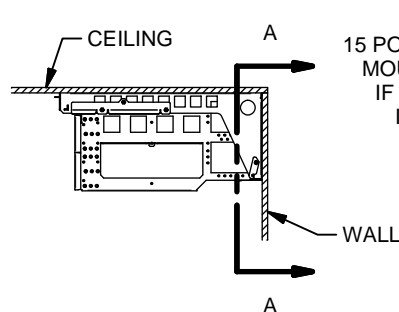
**TS-400 - MAXIMUM
EQUIPMENT
LOAD - 50 LBS**



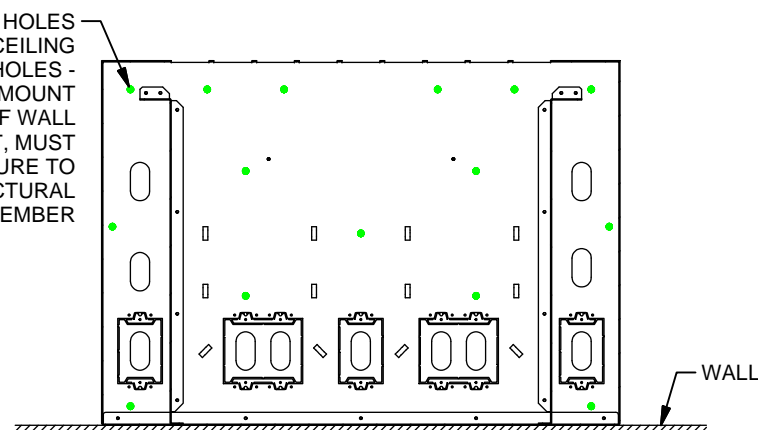
SECTION A-A



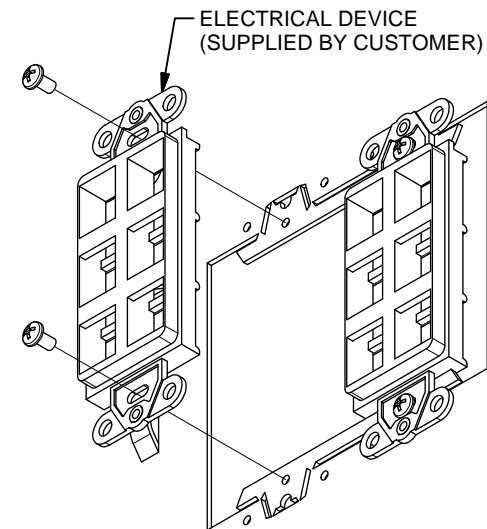
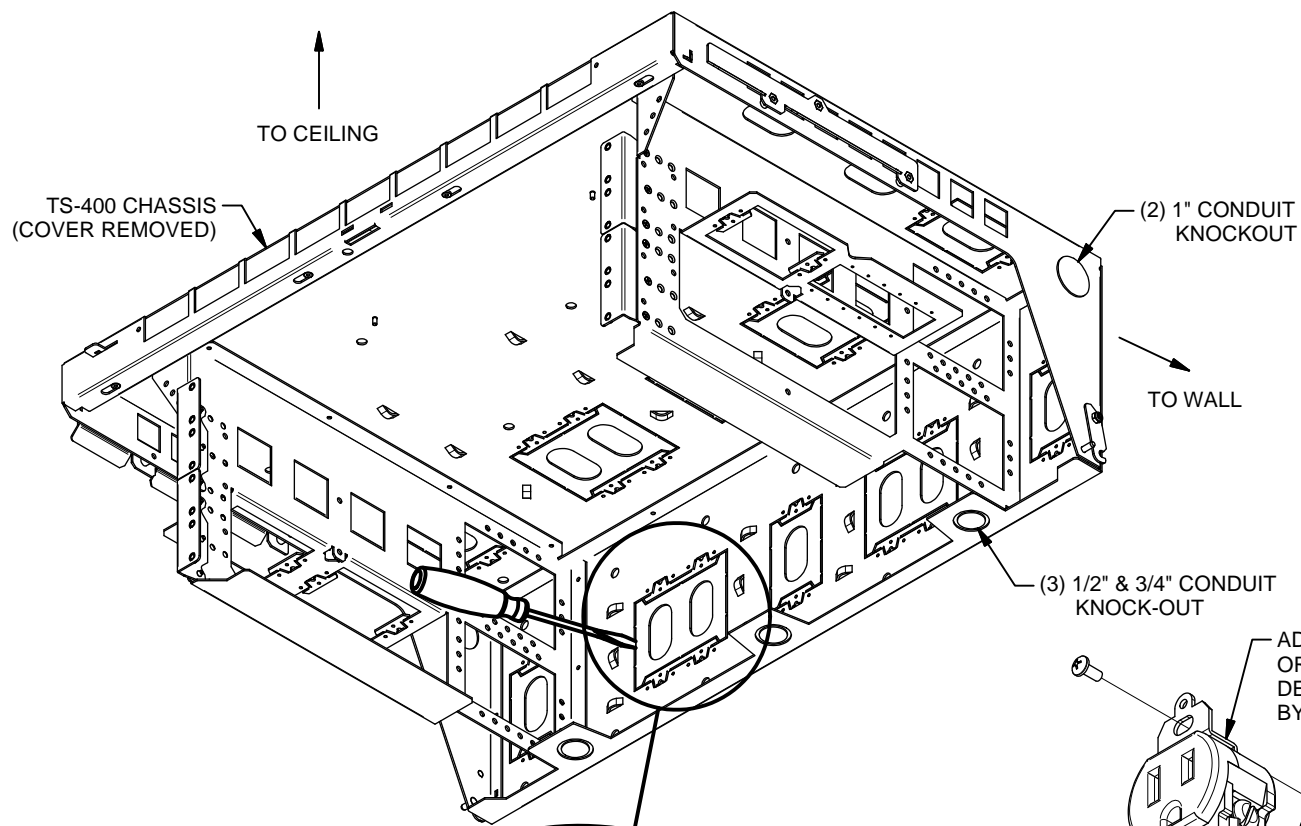
TS-400 WITHOUT COVER



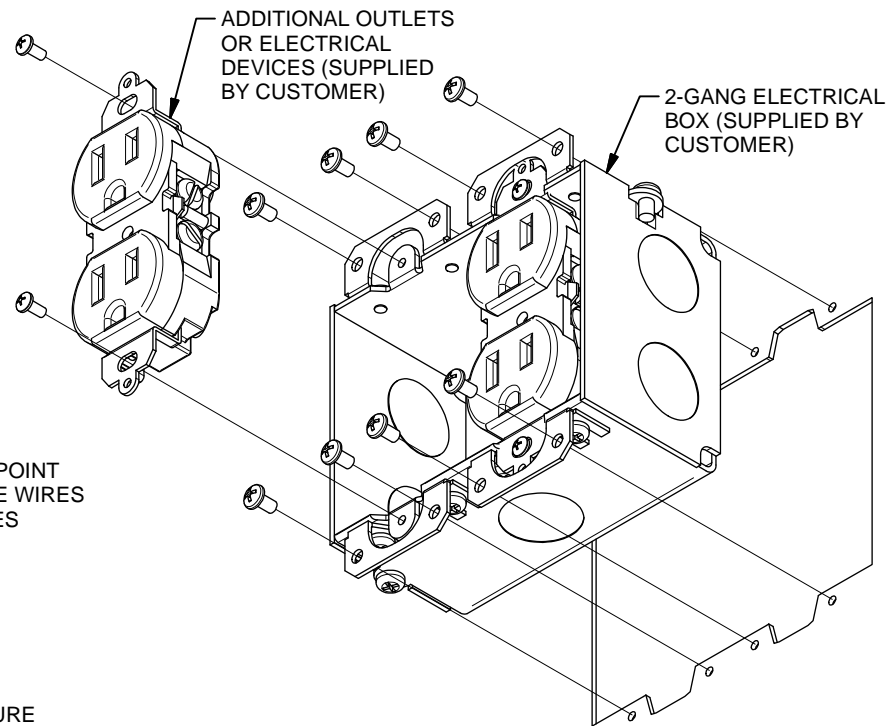
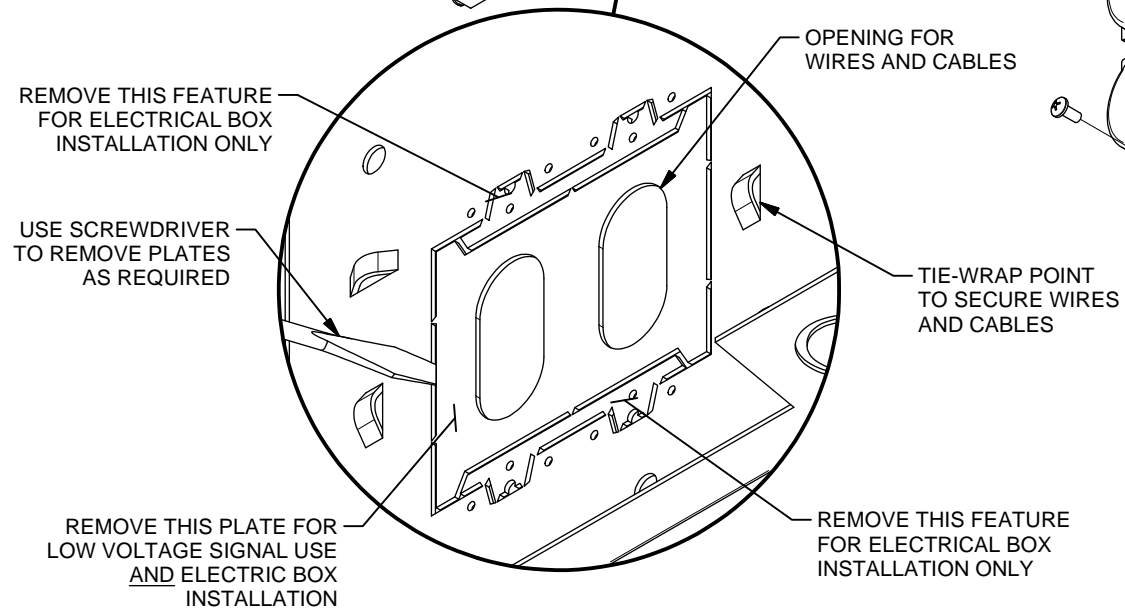
.328 DIA. HOLES
15 POSSIBLE CEILING
MOUNTING HOLES -
IF CEILING MOUNT
IN LIEU OF WALL
MOUNT, MUST
SECURE TO
STRUCTURAL
MEMBER



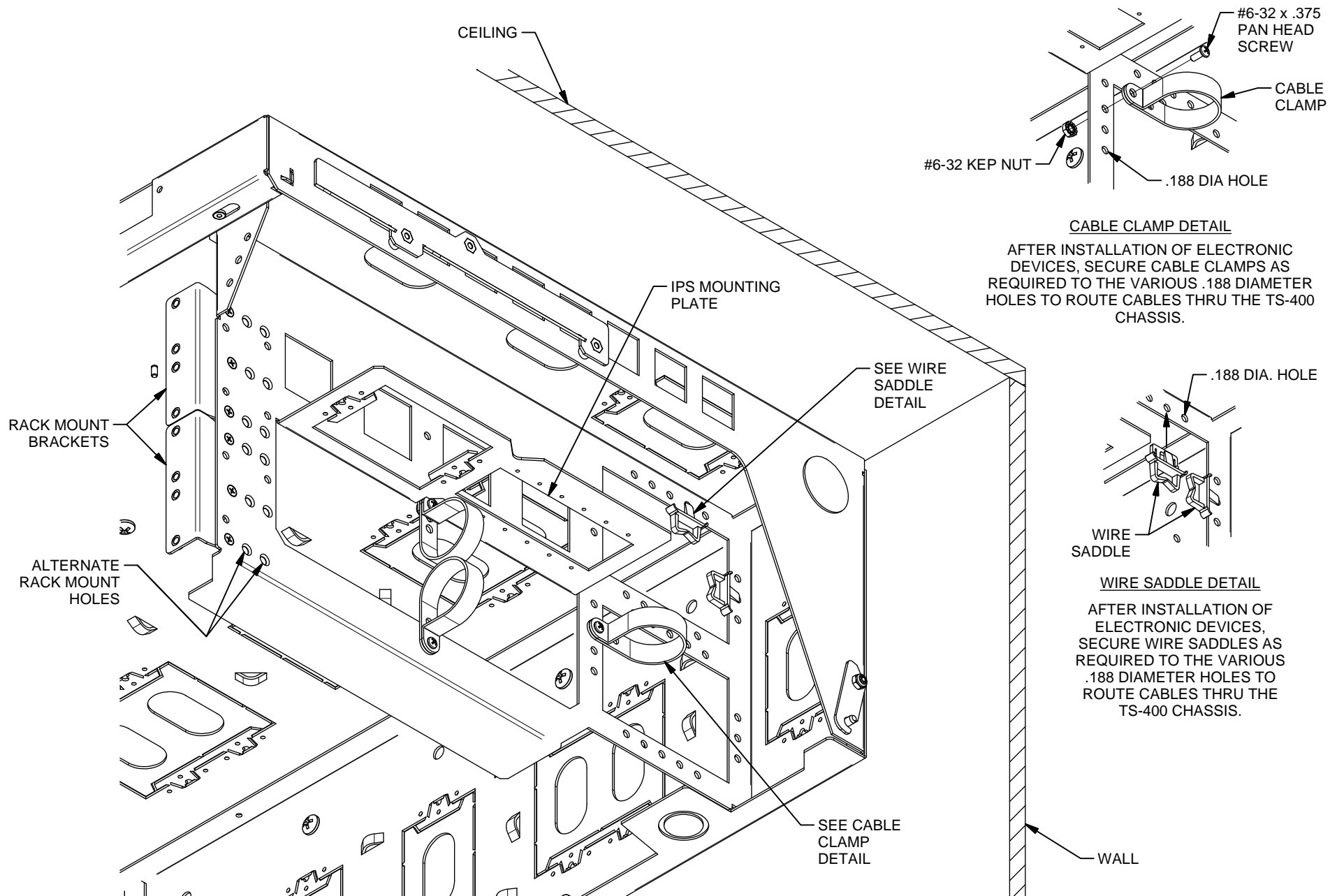
SECTION B-B



LOW SIGNAL DETAIL

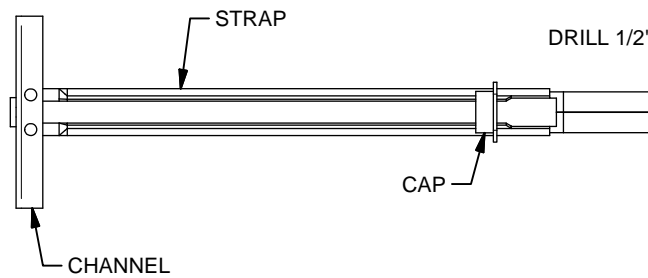


ELECTRIC BOX INSTALLATION DETAIL

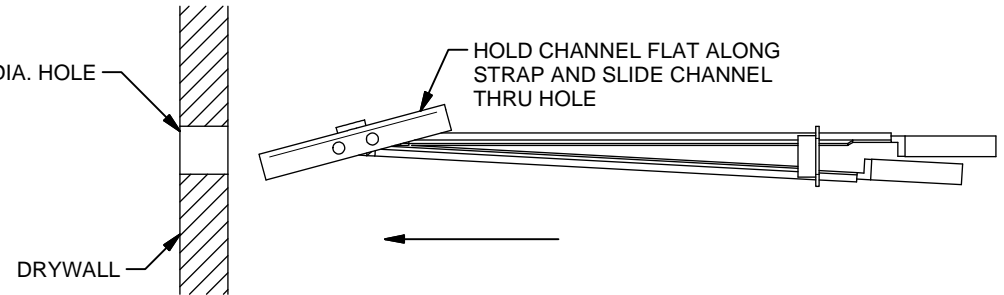


1/4" TOGGLE BOLT INSTALLATION (8 PROVIDED)

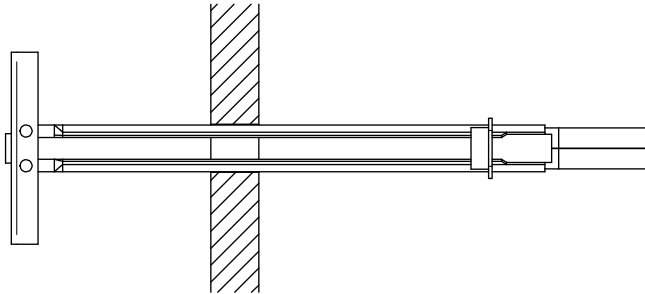
1a.



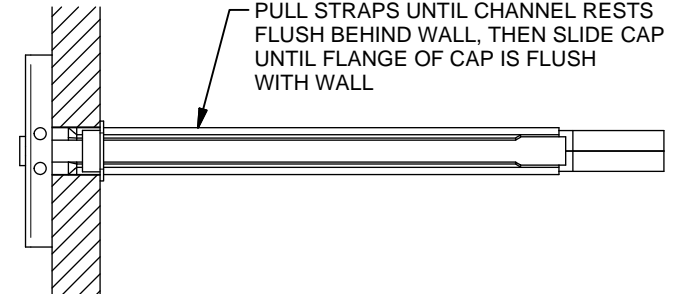
1b.



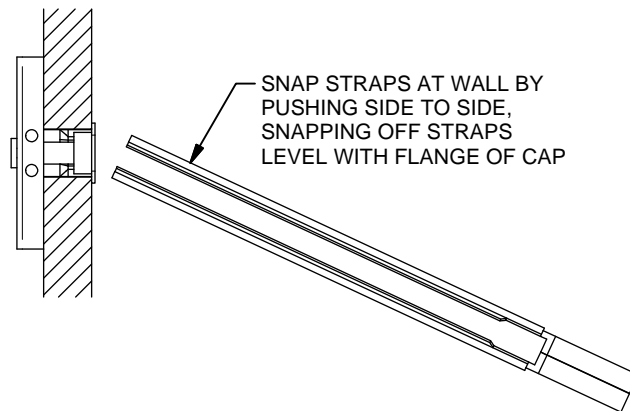
1c.



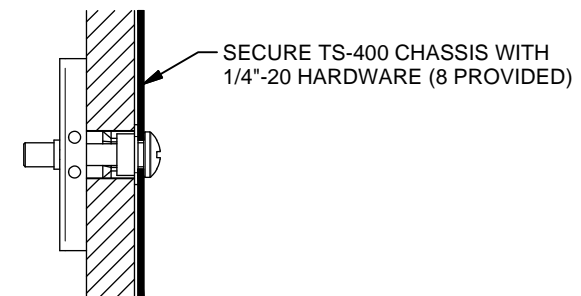
1d.



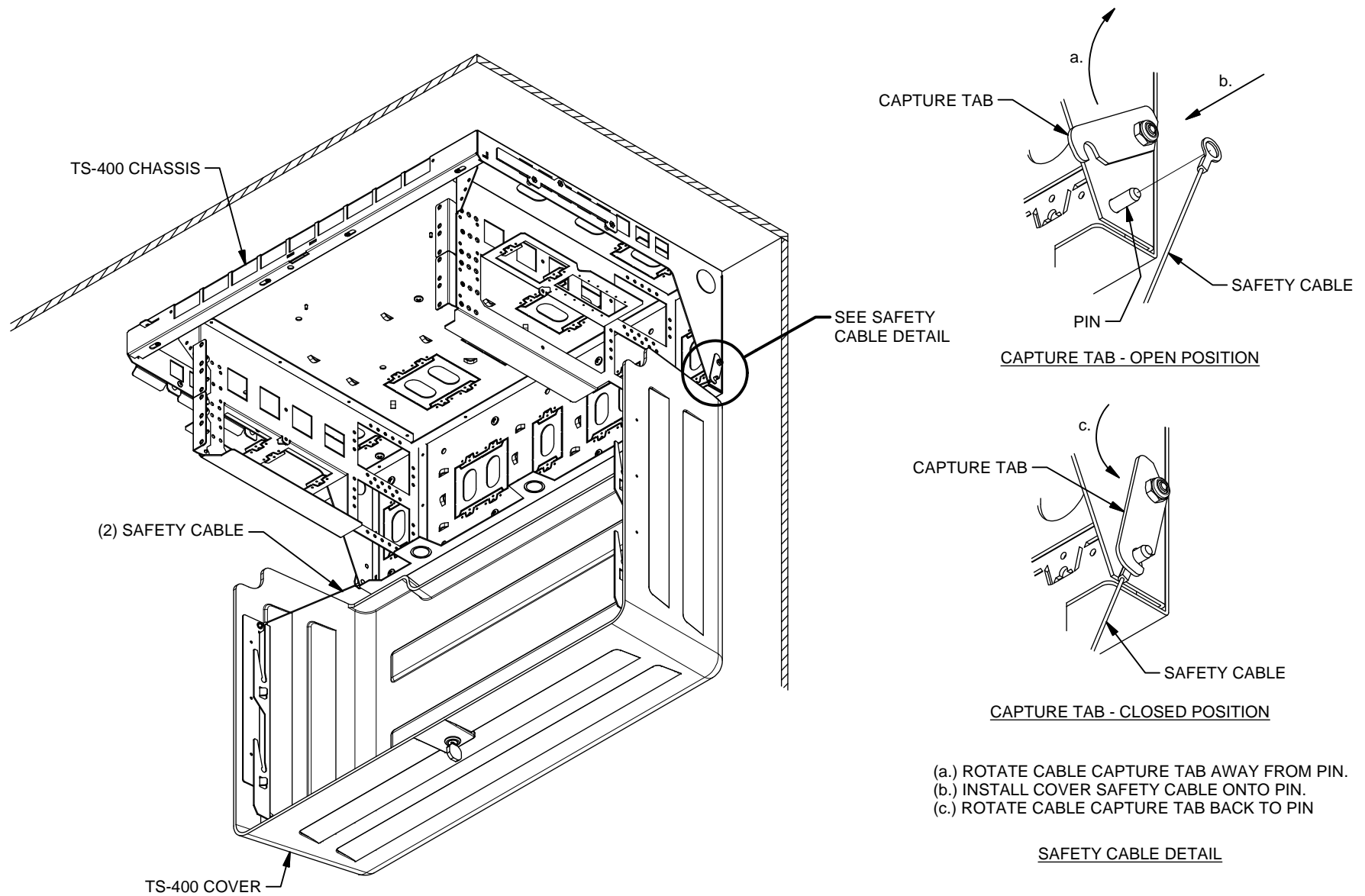
1e.



1f.



2. AFTER CHASSIS IS MOUNTED TO WALL, INSTALL COVER'S SAFETY CABLE TO CHASSIS.



3. INSTALL COVER ONTO CHASSIS. MAINTAIN TENSION ON SAFETY CABLE WHILE POSITIONING COVER TO CHASSIS. REVERSE STEPS TO REMOVE COVER FROM CHASSIS.

