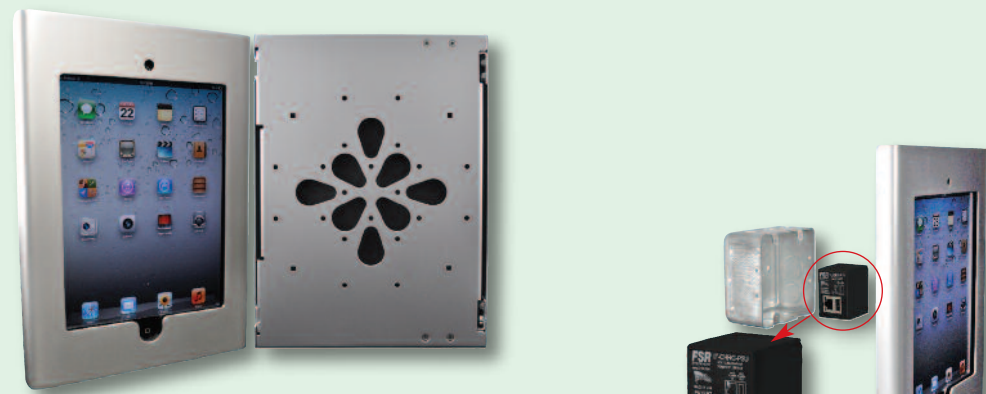


IPAD MOUNTS & CHARGERS



The iPad® wall mount is designed for strength, practicality and elegance, that fits both the iPad 2 and the new iPad. There is no visible hardware, and we use tamper resistant hardware for security. Symmetrical hole patterns provide rapid mounting in portrait or landscape mode. Attractive openings for cable egress are provided. Standard colors are silver and black. As an added value we will print a client logo on the front FREE with orders of 10 pieces or more.



The Perfect PoE/USB Charger

You can power and charge the iPad from a PoE-Ethernet drop without the need for AC line power. Mount this small cube in a 2-gang wall box behind the FSR iPad wall mount. The PoE / USB charger will operate and charge the iPad supporting Apple's charging standard. The PoE / USB Charger will also notify the iPad that it is connected to a charger avoiding annoying pop-ups.

DC Powered USB Chargers

Our DC Powered USB chargers for your smart devices come in a variety of form factors to meet your requirements. The chargers incorporate the necessary firmware to communicate with your device and provide it the correct charging wattage, up to a full 12 watts. All models come complete with a universal power supply.



© iPad is a registered trademark of Apple Inc., registered in the US and other countries. The products contained on these pages are not endorsed by or affiliated with Apple Inc.

MFG. SPECIFIC PWBs



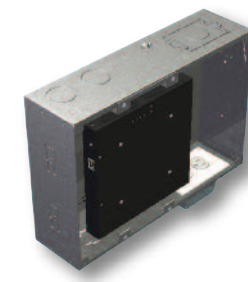
FSR now offers several "MMS" (Manufacturer Mounting Solutions) PWB housings. All models have the same basic features and include bracketry for specific manufacturer's components as listed under each model. These are designed to quickly and easily install behind a wall mounted display or a projector. The component and power supply are mounted to a removable bracket which is then mounted to the PWB back box. The back box is typically installed flush with the wall's surface, between either wood or steel studs. Mounting screws are included. A duplex box is also included and can be mounted at either the top or bottom duplex area on the back box. There are two 1" and 1.25" concentric knockouts on the top and bottom for cable/conduit entry. Built in cable tie slots with ties included.



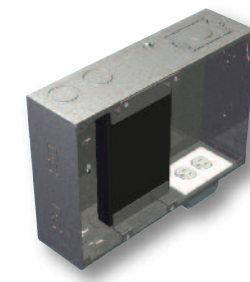
PWB-270
Flat Panel Display Wall Box for Crestron
DM-RMC-SCALER-C Receiver



We offer PWB Series boxes that work with the Cisco 4400 Series Media Players. Contact the factory for more details.



PWB-280
Flat Panel Display Wall Box for SVSI N1000, N2000, N3000 powered Encoders



PWB-290
Flat Panel Display Wall Box for AMX AVB-RX-DXLINK-HDMI Receiver/ AVB-TX-MULTI-DXLINK Multi-Format Transmitter/DXLF-HDMIRX Fiber Receiver/DXLF-MFTX Fiber Transmitter and Power Supplies

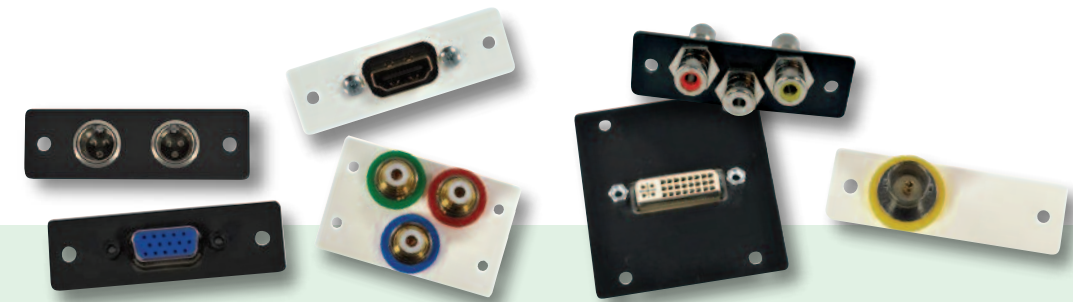
Touchboards

205 Westwood Ave, Long Branch, NJ 07740
Phone: 866-94 BOARDS (26273) / (732)-222-1511
Fax: (732)-222-7088 | E-mail: sales@touchboards.com



WALL BOXES

INTELLIGENT PLATE SOLUTIONS



The IPS family of interconnect solutions offers a comprehensive selection of accessories, available in white, ivory or black. Simply select a plate that fits your application and available space. Then select your internal connector plate. IPS Plates come with a lifetime warranty.

We offer FREE standard labeling. Visit our web site and drag and drop your solutions with IPS Designer.

LITE-IT

The Light with a Brain



LITE-it easily provides lighting in floor, wall, ceiling boxes, equipment racks, or anywhere a work light is needed. LITE-it is included with the larger OWB boxes (OWB-X and OWB-500P) for safe connecting in dimly lit areas. LITE-it can be used with all our Core Solutions. Add LITE-it to every box!



Specifications are subject to change without notice.



244 Bergen Boulevard · Woodland Park, NJ 07424
800.332.FSR1 · 973.785.4347 · F: 973.785.3318
W: fsrinc.com · E: sales@fsrinc.com
© 2016 FSR, Inc. All Rights Reserved

LIT1185K



Protect and Secure your Infrastructure Connections

Created to Amaze

PWB SERIES



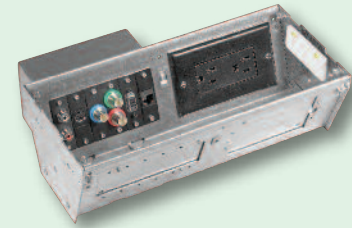
Every wall-mounted flat screen needs a PWB.
Mount a PWB in the wall and end the clutter of hanging cables and equipment.

New Expanded Line.

Every wall-mounted flat screen needs a PWB! Mount a PWB in the wall and end the messy hanging cables! Power, data, interfaces and more mount discretely behind the flat screen. Covers are available in white or black. A variety of boxes, including versions to handle 3-inch walls, are in stock. Neat and efficient cable management is just a PWB away.

The PWB-353 Wall Box has the characteristics of the PWB-253 but has an open face design and a white interior. An extended trim ring, rather than a cover, provides easy access to the interior. The extended trim ring provides a clean appearance covering rough cuts in the sheetrock.

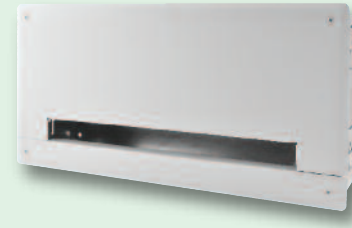
The standard PWB-450 is the largest of our PWB series.



PWB-100



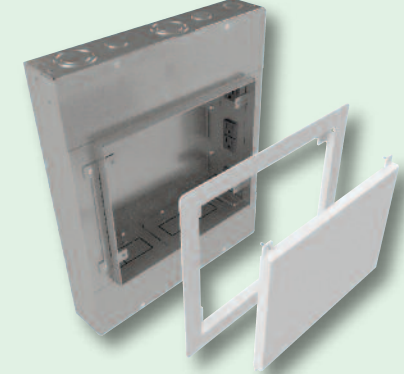
PWB-200
PWB-203 for 3" Walls



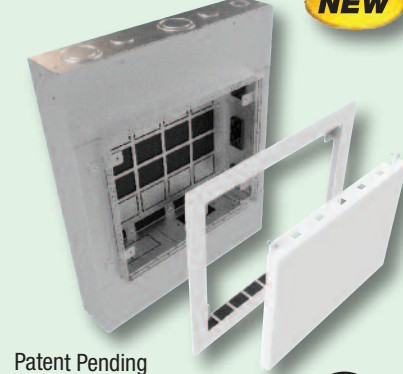
PWB-250
PWB-253 for 3" Wall



PWB-353
Open face design with
extended trim ring.



PWB-450 Large Project Wall Box



Patent Pending
FIRE RATED cUL US

PWB-FR-450 Large Project Wall Box

OUTDOOR

The World's Only Outdoor Wall Boxes Designed for AV & IT Connections.

OWB Outdoor Wall Boxes are the latest addition to FSR's metal products line. Locking doors in white are standard with other color and style options available upon request including windows.

Each large OWB (OWB-X and OWB-500P) is equipped with a LITE-it for safely connecting in dimly lit areas.



OWB-X



OWB-X3-IPS



OWB-X3-XLR



OWB-X3-PLT

WEATHER BOX



OWB-500P



OWB-CP1



OWB-CP1-W



P: 800.332.FSR1 • W: fsrinc.com • E: sales@fsrinc.com



WB SERIES



The WB Series is an effective way to secure and protect wall plates and data plates with multiple network connections.

FSR's Wall Box series offers 18 different models to fit a variety of applications. Recessed and surface mounts are available for new or existing construction as well as solid door or window versions. Rugged yet attractive, the WB series is an effective way to secure and protect wall plates and data plates where multiple control, data and AV access points are necessary.

WB-3G-4G

These AV wall boxes are available in two sizes; either a standard 3-gang plate or a standard 4-gang plate.

The appropriate blank plate is supplied with each wall box.



WB-MS2G



WB-PS4G



WB-R2G



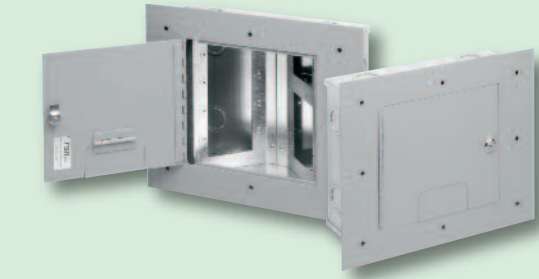
WB-MS1G



WB-4G

WB-500-JL

These larger wall boxes utilize the same back boxes as the FL-500P and FL-600P with plenty of room for connectors and cables. The small door flips back allowing the cables to pass through while the main door is locked.



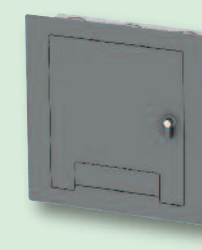
WB-500P-JL

SMWB Surface Mount Boxes

Designed for mounting standard gang devices and plates. These rugged utility boxes can be used to conveniently mount accessories from FSR and other manufacturer's controls, switch panels, keypads and IPS wall plates. Available in 1-gang thru 4-gang in black or white textured paint.



WB-X1



WB-X2



WB-X Series

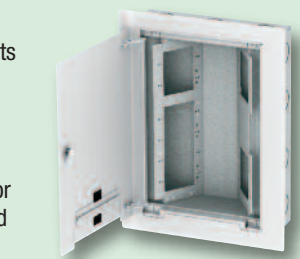
Large Capacity Wall Boxes with Safe, Secure Cable Management

There are three back box styles that are currently available in three different connector capacities for a total of nine possible configurations.

The internal connector mounting plate styles handle either standard gang plates, FSR's huge assortment of IPS inserts or "XLR" type connectors.

The WB-X IPS and XLR style have tapped holes on the connector mounting plates for easy connector mounting and are painted black.

All back boxes include installation brackets for mounting in old or new construction.



WB-X3-GNG
Interior view



WB-X3
Closed view



P: 800.332.FSR1 • W: fsrinc.com • E: sales@fsrinc.com

