



WALL SOLUTIONS



Protect and Secure your Infrastructure Connections

FSR Works For You

PWB SERIES

New Expanded Line.

Every wall-mounted flat screen needs a PWB! Mount a PWB in the wall and end the messy hanging cables! Power, data, interfaces and more mount discretely behind the flat screen. Covers are available in white or black. A variety of boxes, including versions to handle 3-inch walls, are in stock. Neat and efficient cable management is just a PWB away.

The PWB-CMU8 is the first dedicated Masonry Wall Box engineered for installation in 8" block walls. The all-metal CMU8 is designed to replace the front portion of one block and, with the optional paintable cover, provides an attractive surface with no visible jagged block edges. The box has two opposing 2-gang device boxes inside, providing space for power and low voltage devices, including most receivers.

The standard PWB-450 is the largest of our PWB series.



PWB-100



PWB-200 PWB-203 for 3" Walls



PWB-CMU8



PWB-250 PWB-253 for 3" Wall

OUTDOOR

The World's Only Outdoor Wall Boxes Designed for AV & IT Connections.

OWB Outdoor Wall Boxes are the latest addition to FSR's metal products line. Locking doors in white are standard with other color and style options available upon request including windows.

Each large OWB (OWB-X and OWB-500P) is equipped with a LITE-it for safely connecting in dimly lit areas.



OWB-GNG shown

The OWB-X-GNG "gang" style back box includes factory mounted moveable high voltage dividers so that compartments containing AC line power can be isolated from low voltage and signal areas. Multiple gang arrangements are accomplished with a combination of supplied moveable dividers and spacer/filler panels.

The OWB-X3-IPS and -XLR style back boxes have tapped holes on the connector mounting plates for easy connector mounting and are painted black.

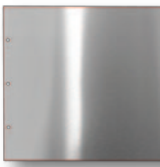
The OWB-X3-PLT style has a blank mounting plate to be punched or drilled by the user per their requirements. The depth of the plate is field adjustable.



OWB-X3-IPS bracket (three provided)



OWB-X3-XLR bracket (four provided)



OWB-X3-PLT bra (one provided)





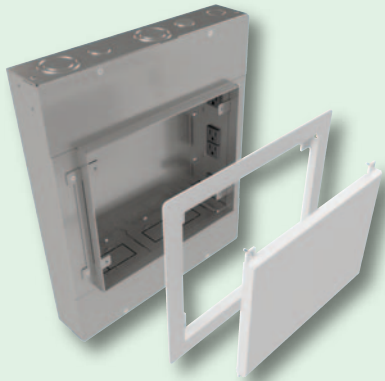
Every wall-mounted flat screen needs a PWB.
Mount a PWB in the wall and end the clutter of hanging cables and equipment.



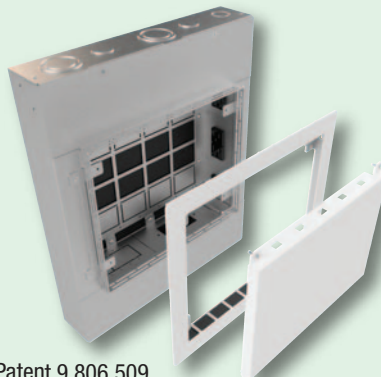
PWB-320/323



PWB-320/323XL



PWB-450 Large Project Wall Box



Patent 9,806,509

FIRE RATED



PWB-FR-450 Large Project Wall Box



RETRACTOR Ready

PWB-HVBX is "Retractor Ready" allowing users easy access to AV cables and AC power.



WEATHER BOX



OWB-500P



OWB-CP1



OWB-CP1-W



acket

WB SERIES



The WB Series is an effective way to secure and protect wall plates and data plates with multiple network connections.

FSR's Wall Box series offers 18 different models to fit a variety of applications. Recessed and surface mounts are available for new or existing construction as well as solid door or window versions. Rugged yet attractive, the WB series is an effective way to secure and protect wall plates and data plates where multiple control, data and AV access points are necessary.



WB-MS2G



WB-PS4G



WB-R2G



WB-MS1G

WB-CMU-6G

The WB-CMU-6G-B is a new six-gang wall box used in Masonry wall construction. The unit is designed for CMU construction with a large volume plate area for high-density configurations recessed to protect the connectors and multiple KO openings for 3/4" to 1-1/4" conduit. It can separate compartments for high and low voltage, and gang plates can be configured in many different electrical plate configuration combinations. The box comes complete with a divider and spacers; no extra parts are needed.

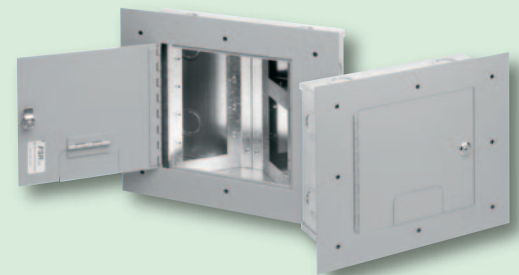


WB-CMU-6G



WB-500-JL

These larger wall boxes utilize the same back boxes as the FL-500P and FL-600P with plenty of room for connectors and cables. The small door flips back allowing the cables to pass through while the main door is locked.



WB-500P-JL

WB-3G-4G

These AV wall boxes are available in two sizes; either a standard 3-gang plate or a standard 4-gang plate.

The appropriate blank plate is supplied with each wall box.



WB-4G

WB-X Series

Large Capacity Wall Boxes with Safe, Secure Cable Management

There are three back box styles that are currently available in three different connector capacities for a total of nine possible configurations.

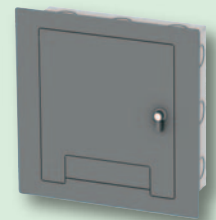
The internal connector mounting plate styles handle either standard gang plates, FSR's huge assortment of IPS inserts or "XLR" type connectors.

The WB-X IPS and XLR style have tapped holes on the connector mounting plates for easy connector mounting and are painted black.

All back boxes include installation brackets for mounting in old or new construction.



WB-X1



WB-X2

SMWB Surface Mount Boxes

Designed for mounting standard gang devices and plates. These rugged utility boxes can be used to conveniently mount accessories from FSR and other manufacturer's controls, switch panels, keypads and IPS wall plates. Available in 1-gang thru 4-gang in black or white textured paint.

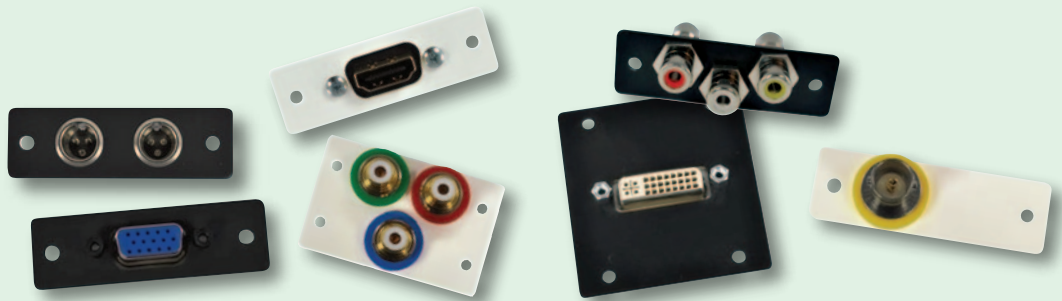


WB-X3-GNG
Interior view



WB-X3
Closed view

INTELLIGENT PLATE SOLUTIONS



The IPS family of interconnect solutions offers a comprehensive selection of accessories, available in white, ivory or black. Simply select a plate that fits your application and available space. Then select your internal connector plate. IPS Plates come with a lifetime warranty.

We offer FREE standard labeling. Visit our web site and drag and drop your solutions with IPS Designer.

LITE-IT

The Light with a Brain



LITE-it easily provides lighting in floor, wall, ceiling boxes, equipment racks, or anywhere a work light is needed. LITE-it is included with the larger OWB boxes (OWB-X and OWB-500P) for safe connecting in dimly lit areas. LITE-it can be used with all our Core Solutions. Add LITE-it to every box!

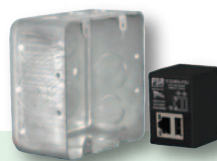
POWERED CHARGERS

The Perfect PoE/USB Charger

You can power and charge the iPad from a PoE-Ethernet drop without the need for AC line power. Mount this small cube in a 2-gang wall box behind the iPad wall mount. The PoE / USB charger will operate and charge the iPad supporting Apple's ® charging standard. The PoE / USB Charger will also notify the iPad that it is connected to a charger avoiding annoying pop-ups.

DC Powered USB Chargers

Our DC Powered USB chargers for your smart devices come in a variety of form factors to meet your requirements. The chargers incorporate the necessary firmware to communicate with your device and provide it the correct charging wattage, up to a full 12 watts. All models come complete with a universal power supply.



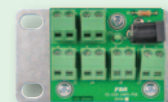
IT-USB-CHRG



SS-USB-CHRG



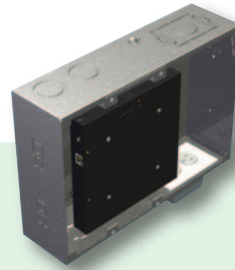
IPS-D717S



SS-USB-CHRG-PS6

® iPad is a registered trademark of Apple Inc., registered in the US and other countries. The products contained on these pages are not endorsed by or affiliated with Apple Inc.

MFG. MOUNTING SOLUTIONS



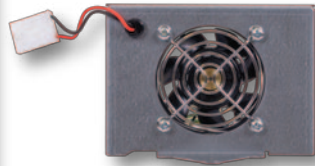
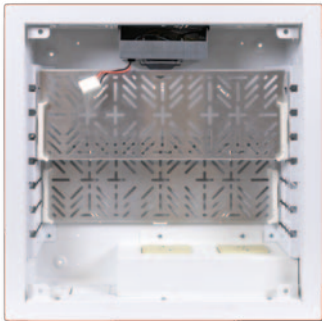
FSR now offers several “MMS” (Manufacturer Mounting Solutions) PWB housings. All models have the same basic features and include bracketry for specific manufacturer’s components as listed under each model. These are designed to quickly and easily install behind a wall mounted display or a projector.

The component and power supply are mounted to a removable bracket which is then mounted to the PWB back box.

The back box is typically installed flush with the wall’s surface, between either wood or steel studs. Mounting screws are included. A duplex box is also included and can be mounted at either the top or bottom duplex area on the back box. There are two 1” and 1.25” concentric knockouts on the top and bottom for cable/

PWB-320 Cooling Fan

The PWB-320 Wall Box cooling Fan is a thermostat controlled variable speed fan. As the heat inside the wall box rises the speed of the fan will too, keeping equipment inside at a safe temperature. The maximum air flow the fan puts out is 25 cubic feet per minute.



PWB-270
Flat Panel Display Wall
Box for Crestron
DM-RMC-SCALER-C Receiver



PWB-280
The PWB-280 wall box is specifically designed to house the SVSi model N1000, N2000 or N3000 series PoE powered encoders.



We offer PWB Series boxes that work with the Cisco 4400 Series Media Players. Contact the factory for more details.

All FSR Table, Floor, Wall and Ceiling Box CAD drawings and BIM objects are available on our website. For assistance in selecting the proper box to hold your power, data, voice, video, etc., please call us at 1-800-332-FSR1 (3771).



244 Bergen Boulevard · Woodland Park, NJ 07424
800.332.FSR1 · 973.998.2300 · F: 973.785.3318
W: fsrinc.com · E: sales@fsrinc.com

LIT1185Q

© 2022 FSR, Inc. All Rights Reserved



Specifications are subject to change without notice.