

# FSR PWB-CMU8 Installation Instructions

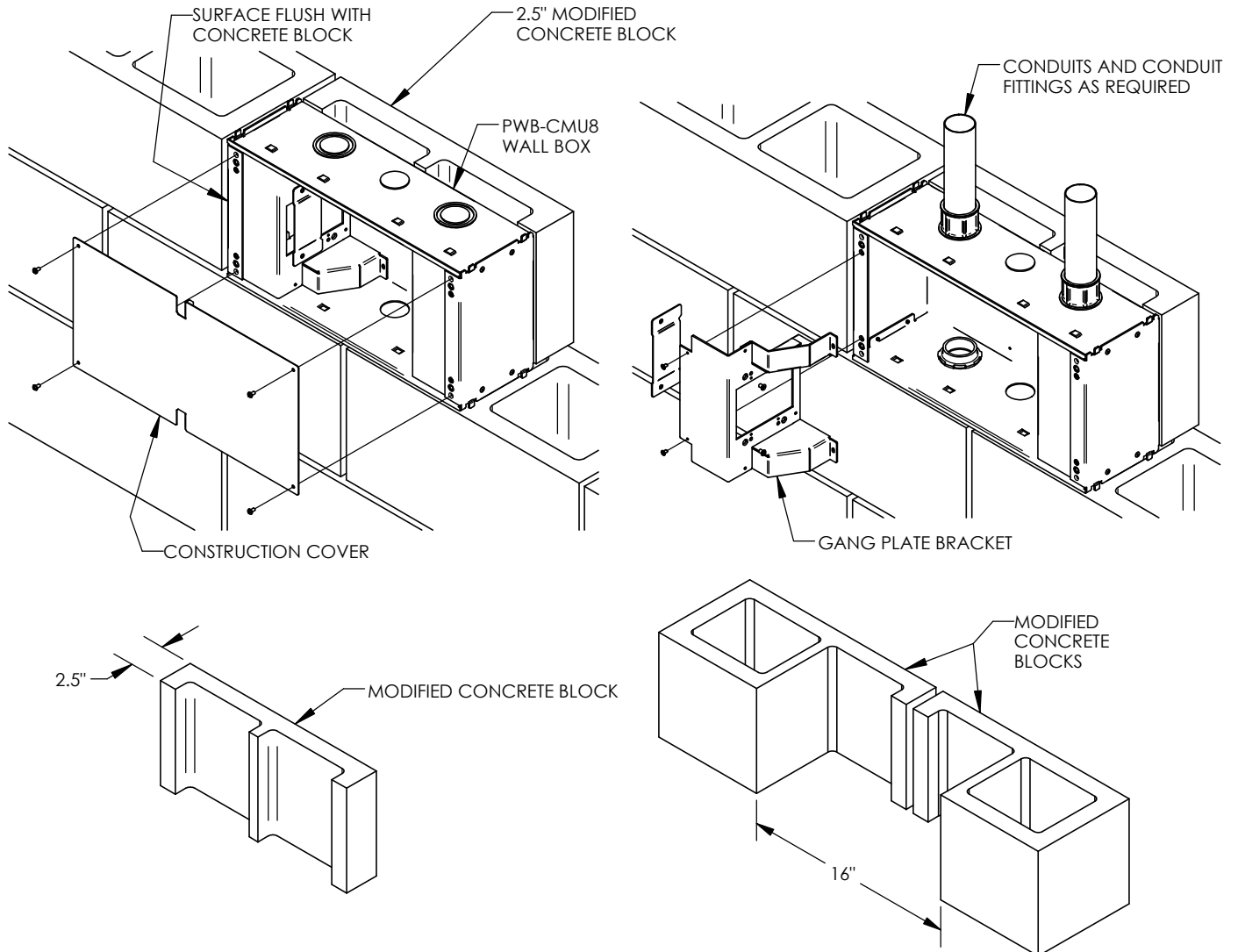
244 Bergen Boulevard, Woodland Park, NJ 07424, Phone: 973.785.4347 - FAX 973.785.4207

## WALL BOX INSTALLATION

1. REMOVE CONSTRUCTION COVER AND GANG PLATE BRACKET FROM BOX. INSERT CONDUIT FITTINGS AND CONDUIT INTO BOX. MORTAR SHOULD BE APPLIED TO THE TOP AND SIDES OF BLOCKS SURROUNDING WALL BOX. RE-INSERT GANG PLATE BRACKET AND CONSTRUCTION COVER WITH SUPPLIED HARDWARE BEFORE ANY MORTAR IS APPLIED TO THE BOX.
2. A MODIFIED CONCRETE BLOCK WILL NEED TO BE CUT 2.5" DEEP, LENGTHWISE, AS SHOWN, OR AS SECONDARY BLOCK MODIFICATION IS SHOWN.
3. PLACE THE WALL BOX ON THE BLOCK WALL, ENSURING THE FRONT SURFACE OF THE WALL BOX IS FLUSH WITH CONCRETE BLOCK WALL. APPLY MORTAR TO THE MODIFIED BLOCK, INCLUDING ANY WEBS THAT MEET THE BACK OF THE WALL BOX. ALL SEAMS AROUND THE WALL BOX SHOULD BE FILLED WITH MORTAR.

**NOTE\*\*** IT IS IMPORTANT THAT THE CONSTRUCTION COVER IS INSTALLED ON WALL BOX PRIOR TO PLACING THE WALL BOX ON THE BLOCK WALL AND BEFORE ANY CONCRETE BLOCKS ARE PLACED ABOVE THE UNIT.

**NOTE\*\*** IF CENTER KNOCKOUT WILL BE UTILIZED, ENSURE THE CENTER WEB FROM THE CONCRETE BLOCK ABOVE OR BELOW THE WALL BOX IS REMOVED.



# FSR PWB-CMU8 Installation Instructions

244 Bergen Boulevard, Woodland Park, NJ 07424, Phone: 973.785.4347 - FAX 973.785.4207

## ELECTRICAL INSTALLATION

1. AFTER MORTAR HAS SET REMOVE AND DISCARD CONSTRUCTION COVER AND HARDWARE. REMOVE GANG PLATE BRACKET TO INSTALL AND WIRE ELECTRICAL DEVICES. INSTALL 1-GANG BLOCK OFF PLATE AS REQUIRED. RE-INSERT GANG PLATE BRACKETS WITH SUPPLIED HARDWARE.
2. INSTALL FINISHED COVER PLATE WITH HARDWARE PROVIDED.

NOTICE: FOR INSTALLATION BY A QUALIFIED ELECTRICIAN IN ACCORDANCE WITH ALL NATIONAL AND LOCAL ELECTRICAL CODES.

