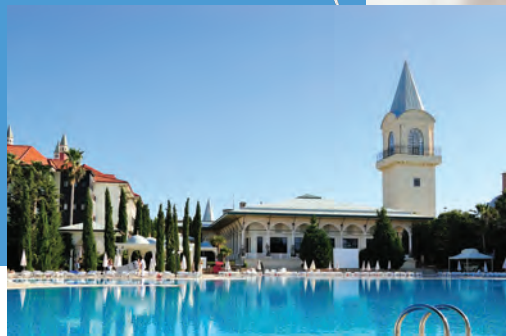




# AT-A-GLANCE



Audio, Video, Signal Management and Infrastructure Technologies

Empowering Connections



# FLOOR BOXES

## Bringing Elegant Cable Access To Your Infrastructure.

A unique variety of boxes to handle stage, raised access, poured concrete or retro-fit flooring applications. FSR matches the décor of your installation with solid construction, beautiful carpet rims, flanges, and available accessories.

Our Fire-Resistant floor solutions expand the versatility of our floor box line by providing enhanced, fire-resistant versions of our existing products. Our FRK kits are UL listed and comply with UL 263 Fire Resistance Ratings.



**FIRE RATED**



CLASSIFIED  
C UL US

# SMART-WAY RACEWAY

## The Intelligent Choice

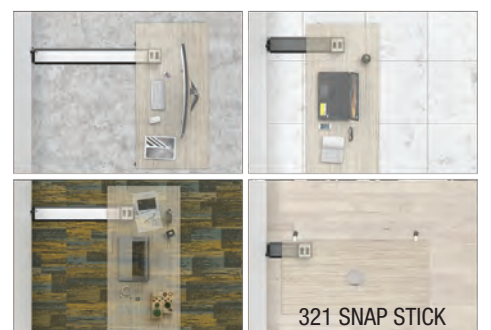
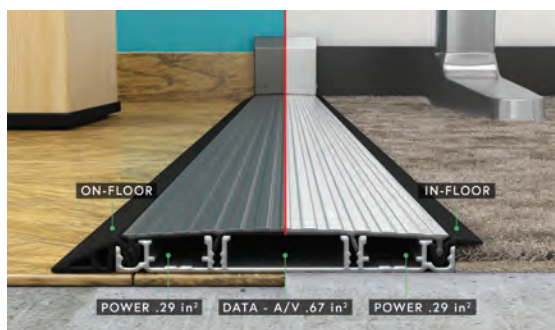
The Smart-Way Raceway System is the intelligent choice for wire management.

It installs on top of or in any flooring and provides a quick, easy, affordable and attractive installation.

The Smart-Way Raceway gets cables where they're needed. The raceway is perfect for collaborative environments or classrooms.

The raceway compartments provide ample space for power, communications and A/V connectivity.

The Smart-Way is only 0.6" high, ADA compliant, available in slate gray or aluminum finishes and is sold in 6' sections.



SMART-WAY STICK

321 SNAP STICK



# WALL BOXES



## Protect and Secure your Infrastructure Connections

Indoor and outdoor wall boxes protect your wall plates, panels and connections elegantly and securely.

The PWB-FR-450 is the industry's only fire-rated box of this size. Every wall mounted display needs a PWB!



PWB-100



PWB-320/323



PWB-320/323XL



PWB-CMU8



**FIRE RATED**

**WEATHER BOX**



OWB-500P



PWB-HVBX is "Retractor Ready" allowing users easy access to AV cables and AC power.

PWB-FR-450 Large Project Wall Box  
Patent 9,806,509

# HUDDLEVU KITS

From a single computer, to a full classroom or multi-media boardroom, HuddleVU Kits will distribute and process with cost-effective quality.

FSR takes the work out of designing collaboration systems. Now with the prepackaged systems integrators can choose the appropriate kit to fit their customers needs. The kits range from two to four users and include a CT6 table box, a switcher and all the necessary cables. Each kit can be upgraded with optional cable retractors or with FSR's HuddleVU Air wireless presentation switcher.



**DUAL DIGITAL KIT**  
CT6 Table Box +  
DV-HSW-21A  
2 x 1 HDMI Switcher  
and Cable Kit

**DUAL LEGACY KIT**  
CT6 Table Box +  
DV-MFSW-21A  
2 x 1 HDMI Switcher  
and Cable Kit

**QUAD UNIVERSAL KIT**  
CT6 Table Box +  
DV-HDSS-41-Tx  
4 x 1 Scaling Switcher  
and Cable Kit

**QUAD DIGITAL KIT**  
CT6 Table Box +  
DV-T6SS4K-41A  
4x1 Presentation Scaling  
Switcher and Cable Kit

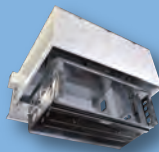


# CEILING BOXES

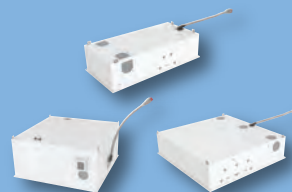
Now you can remove the unsightly equipment boxes hanging off projector poles and mount them in this architecturally-designed ceiling enclosure. Many styles, various price ranges, and "Smart and Green" modules make these boxes perfect for classrooms, boardrooms, meeting rooms and public spaces. These are your equipment racks for ceilings and walls.



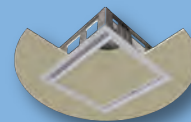
CB-12



CB-224



CB-MLS



CB-SR22  
(shown with CB-22 Ceiling Box)

# TABLE CONNECTIVITY

A wide variety of table boxes that are unique and upscale, meeting the aesthetic demands of today's consultants, architects and clients. Brass, black, aluminum and nickel finishes, a variety of sizes, shapes, and accessories are available from stock.



SYMPHONY "POPS"



MODULAR LINX SYSTEM



SYMPHONY COLLECTION



HARMONY COLLECTION



UNITY COLLECTION



MAIN UNIT

SATELLITE UNIT

SYMPHONY LINX

OPTIONAL SATELLITE UNIT

# SMARTFIT (POKE-THRU)



## It's Not Just Power Anymore!

FSR SmartFit is an innovative system that provides flexible AV solutions for fire rated "poke-thrus". The SmartFit system features a universal cover assembly and multiple sub-plates that install on the fire rated "poke-thrus". NOW AVAILABLE IN 4", 6", 8" & 10" SIZES.



P: 973.998.2300 • W: fsrinc.com • E: sales@fsrinc.com





# SWITCHING, SCALING, EXTENDING & SIGNAL PROCESSING



## Digital Video Solutions



**DV-HDA4K-12AUD**  
1x2 HDMI@ 2.0 splitter that simultaneously routes one HDMI@ source to two HDMI@ displays



**DV-HMSW4K-44**  
High Performance HDMI 4x4 Matrix Switcher



**DV-HMSW4K-88**  
8-Input x 8-Output HDMI Matrix Switcher



**DV-HSW4K-41AUD**  
4x1 HDMI auto switcher with four HDMI@ video inputs and one HDMI@ output



**DV-HDA-14AUD**  
1x4 HDMI Distribution Amp with extracted audio output



**DV-HSW-21A**  
2x1 HDMI VGA Switcher



**DV-MFSW-21A**  
2x1 HDMI / VGA Switcher



**AirShare DV-AS-21**  
2x1 HDMI WiFi Auto Switcher

**DR-EDID**  
EDID Manager / Learner



**DV-MFSS-71**  
7 x 1 Multi-Format Glitch-free Scaling Switcher



**DV-MFMV-74**  
7 x 1 MultiVU Scaling Windowing Switcher



Next Generation Digital Ribbon 4K & 8K Cables utilize a proprietary technology to allow high speed, high definition HDMI signal transmission over distances of up to 328 ft. Available with CoilGuard™ steel reinforced cable.



**HDMI**  
HIGH DEFINITION MULTIMEDIA INTERFACE  
**(HDCP)**

Now available with USB Type-C connector

## HDBaseT™ EXTENDERS



### 70 meter



**HD-H704K-SP**  
HDBaseT 70m extender set - Compressed 4K-60 4:4:4, IR & RS- 232 18v PoE.



**HD-HWP-TX**  
100 Meter HDMI Transmitter Wall Plate

### 100 meter



**HD-H704K-WP** — The HD-H704K-WP 18G HDMI@ extender consists of a single gang wall plate transmitter and a small thin brick receiver



**HD-HU-SP-Tx** — 100 Meter HDBaseT 2.0 HDMI & USB Transmitter



**DV-HDSS-41-Tx** — 100 Meter Four Input and Two Output Scaling Auto Switcher with HDBT



**HD-HPCUWP-Tx**  
100 Meter true HDBaseT 2.0 5-Play Transmitter Wall Plate



**HD-H-SP-Rx** — 100 Meter HDBaseT Slim-Pack Receiver



**HD-HU-SP-Rx** — 100 Meter HDBaseT 2.0 HDMI & USB Receiver

# CONCERTTO CABLE MANAGEMENT

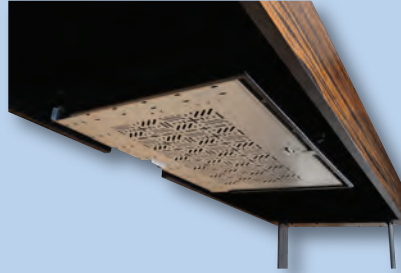


## CONCERTTO

This system provides clean, elegant cable management in table designs that lack a pedestal for hiding cables and power as they transition from the tables boxes to the floor.

## CONCERTTO Under-Table Rack

Under-table Rack shelving mounts multiple pieces of AV, Digital, or Data equipment to the underside of tables with easy access.



## BLOCK & SLIDE

The Block and Slide provide a simple, economical and elegant way to route cabling from the underside of the work surface to the floor. Both models feature easy installation and add an aesthetically appealing appearance under any workspace.



# CHARGING STATIONS



## SYMPHONY Pedestal

This floor standing unit gives you AC power, USB charging, snap-ins, cable pass-through and any other type of connectivity that you may require. Perfect for under a desk or waiting area applications. Available in black or white.



## Wireless Charger

The TC-WC1 fuses a refined minimalism with wireless charging technology. It is easy to install, giving you charging capabilities at your fingertips. The wireless charger is available in black or white with an aluminum bezel.

# ROOM CONTROL & COMBINING



**FSR makes room control user friendly and cost effective!**

## FLEX-LT - ROOM CONTROL AT YOUR FINGERTIPS

- 3.5" Diagonal Color LCD Touch Screen
- Self-contained with many features and models
- Wall or desk mounting
- Up to 4 serial and 4 IR Ports (select models)
- Multi Command Scripting, Conditionality, Flags and Counters
- Built In Clock / Calendar with Scheduler
- CU Configuration Utility



CT6-Flex

24/7  
TECH  
SUPPORT



Flex-LT



## FLEX-IO16 I/O Expansion Unit

Provides 16 Ground Closure Inputs, 16 Lamp Outputs and, RS-232 & IP Communication to expand the control capabilities of FLEX as well as interfacing with any 3rd party control system.



## ML-116 SIXTEEN ROOM COMBINING

Join several systems together and control up to 256 Rooms!



## BMS-1032 Background Music System

Select between 10 stereo audio sources from an elegant wall plate.



HDBaseT™ and the HDBaseT Alliance logo are trademarks of the HDBaseT Alliance.



All FSR Table, Floor, Wall and Ceiling Box CAD drawings are available on our website. For assistance in selecting the proper box to hold your power, data voice, video, etc., please call us at 973-998-2300.



244 Bergen Boulevard · Woodland Park, NJ 07424

973.998.2300 · F: 973.785.3318

W: fsrc.com · E: sales@fsrc.com

© 2022 FSR, Inc. All Rights Reserved

LIT1188U