



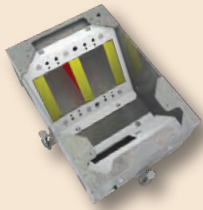
FLOOR SOLUTIONS



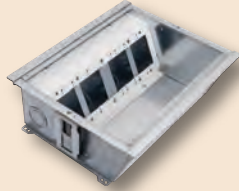
Bringing Elegant Cable Access To Your Infrastructure

FSR Works For You

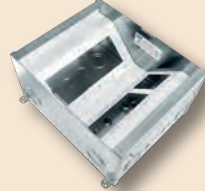
CONCRETE



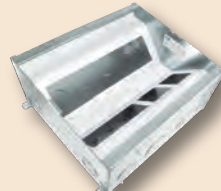
Model # FL-200
Size: 8 3/4" X 6"
Depth: 3", 4"
Cover Size: 8 3/4" X 6" X 1/8"
Knockouts: Range - 3/4" to 1 1/4"
Brackets: 1 sloping field transformable, 1 sloping Decora Opening
Floor Type: Concrete



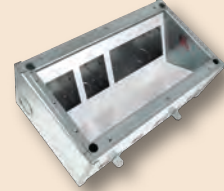
Model # FL-400P (*)
Size: 10 1/2" X 14 1/8"
Depth: 5"
Cover Size: 10 1/2" X 14 1/8"
Knockouts: Range - 1/2" to 2"
Brackets: 1 sloping field transformable
Floor Type: Concrete, Wood, Raised Floor



Model # FL-500P (*)
Size: 10" X 12"
Depth: 2 1/4", 3", 4", 5", 6", 8", 10"
Cover Size: 10 1/2" X 12 1/2" X 1/8"
Knockouts: Range - 3/4" to 1 1/2"
Brackets: 2 sloping field transformable
Floor Type: Concrete



Model # FL-600P (*)
Size: 13 1/2" X 12"
Depth: 3", 4", 5", 6", 8, 10
Cover Size: 14" X 12 1/2" X 1/8"
Brackets: 2 sloping field transformable
Knockouts: Range - 3/4" to 2"
Floor Type: Concrete

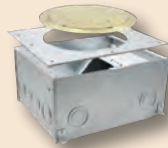


Model # FL-700 (*)
Size: 8" X 14"
Depth: 5 1/4"
Cover Size: 8" X 14" X 1/8"
Knockouts: 6 either 1/2" and 3/4"
Brackets: 1 sloping
Floor Type: Concrete



Model # FL-800 (*)
Size: 8" X 14"
Depth: 5 1/4"
Cover Size: 8" X 14" X 1/8"
Knockouts: 8 either 1" and 1 1/4"
Brackets: 1 sloping
Floor Type: Concrete

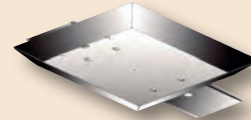
FL-500P, 600P and 640P have reconfigurable internal brackets. 5" and deeper back boxes also have cable "pass-through" capability.



Cover mounting kits allow the Smart-Fit 8" round cover to be installed on a 4" or 6" deep FL-500/540 & 600/640 Floor Box.

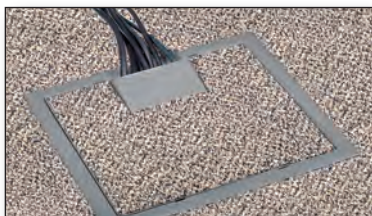
Pour Pan

If your application is a poured concrete floor and the box rests on soil, rock or gravel, you must first install the Pour Pan.



A temporary cover is included and protects the floor boxes interior during installation. Order your finished cover separately.
 (*) These boxes are designed for the new UL safety standard for scrub water. The standard only applies to boxes installed in concrete, not raised access boxes.

RAISED ACCESS

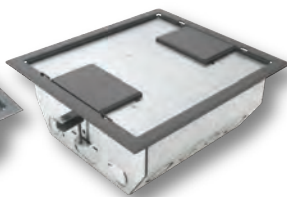


Model # FL-540P
Size: 10" X 12"
Depth: 4", 5", 6", 8", 10"
Cover Size: 10" X 12" X 1/8"
Knockouts: Range - 3/4" to 1 1/2"
Brackets: 2 sloping field transformable
Floor Type: Raised access, stage & computer floors

The RFL-AVs



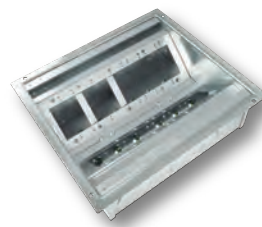
RFL-QAV-BLK



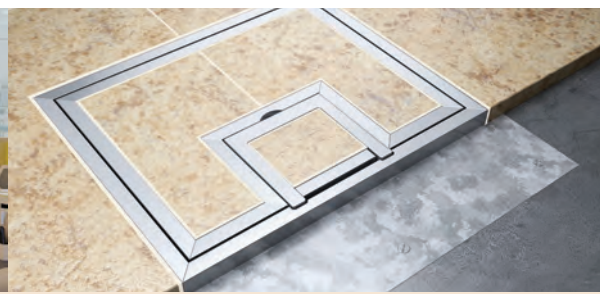
RFL-QAV-CLYDD



RFL-DAV-SLGRY

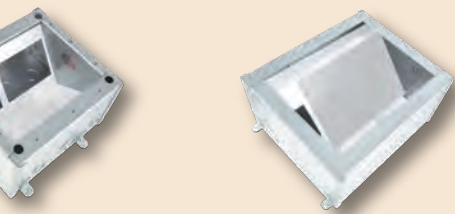


Model # FL-640P
Size: 13.5" X 12"
Depth: 4", 5", 6", 8", 10"
Cover Size: 14" X 12.5" X 1/8"
Knockouts: Range - 3/4" to 1 1/2"
Brackets: 2 sloping field transformable
Floor Type: Raised access, stage & computer floors



Steel construction makes FSR back boxes virtually indestructible. They are your solution for power, audio, video, telecommunications and data.

FIRE RATED



FL-710 (*)
Size: 8" X 9"
Depth: 5 1/4"
Cover Size: 8" X 9" X 1/8"
Knockouts: 6 either 1/2" and 3/4"
Brackets: 3 either 1" and 1 1/4"
Floor Type: 1 sloping
Concrete

Model# FL-2000
Size: 10" X 12"
Depth: 6"
Cover Size: 10 1/2" X 12 1/2"
Knockouts: 2 total in AC section:
 1 rear either 1/2" and 3/4"
 4 total in AV section:
 3 rear and 1 right side either 1" and 1 1/4"
Brackets: 1 sloping
Floor Type: Concrete



SmartFit Series

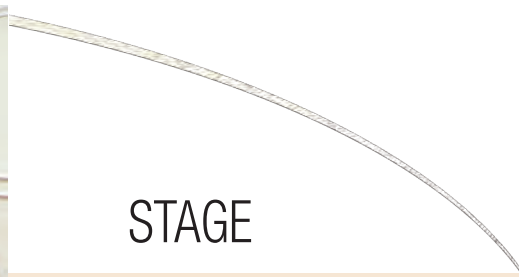
Designed for use in fire-rated floors, these sturdy core hole products are available in 4", 6", 8" and 10" diameters. All models offer flexibility via mounting bracketry to accommodate a wide assortment of power, data and audio video connection options. A complete line of sub-plates for device mounting and connectors is available.

Available cover finishes:

- Brushed Aluminum
- Brushed Brass
- Black

The cover technology exceeds UL scrub water testing requirements. Individual spec sheets and drawings available on the FSR website.

One piece all welded design providing both strength and ease of installation. Cover is painted with Sandtex for a non-skid finish, available in black or oak.



STAGE



Model # FL-1200
Size: 3 3/4" X 4 3/4"
Depth: 4 1/2"
Cover Size: 4 3/4" X 6" X 1/8"
Knockouts: 1 rear either 1/2" and 3/4"
 1 bottom either 1/2" and 3/4"
Brackets: 1 Sloping
Floor Type: Raised access, stage & computer floors



Model # FL-1300
Size: 5 1/2" X 7 1/2"
Depth: 4 7/8"
Cover Size: 6 1/8" X 8 1/2" X 1/8"
Knockouts: 2 rear concentric either 1/2" and 3/4"
 1 bottom concentric either 1/2" and 3/4"
 1 each left and right sides concentric 1/2" and 3/4"
Brackets: 1 Sloping
Floor Type: Raised access, stage & computer floors



Model # FL-1500
Size: 11 1/4" X 8"
Depth: 6"
Cover Size: 13 1/2" X 9 1/2" X 3/16"
Knockouts: 4 rear either 1" and 1 1/4",
 4 bottom either 1" and 1 1/4"
Brackets: 1 Sloping
Floor Type: Raised access, stage & computer floors



Model # FL-1550
Size: 11 1/4" X 8"
Depth: 6"
Cover Size: 13 1/2" X 9 1/2" X 3/16"
Knockouts: Rear: (2) either 1", 1 1/4", 1 1/2", (2) 3/4"
 Bottom: (2) either 1", 1 1/4", 1 1/2", (2) 3/4"
 R/L Sides: (2) 1" or 1 1/4" concentric
Brackets: 1 Sloping
Floor Type: Raised access, stage & computer floors



P: 800.332.FSR1 • W: fsrinc.com • E: sales@fsrinc.com



RESIDENTIAL

SmartFit™ (Poke-Thru)



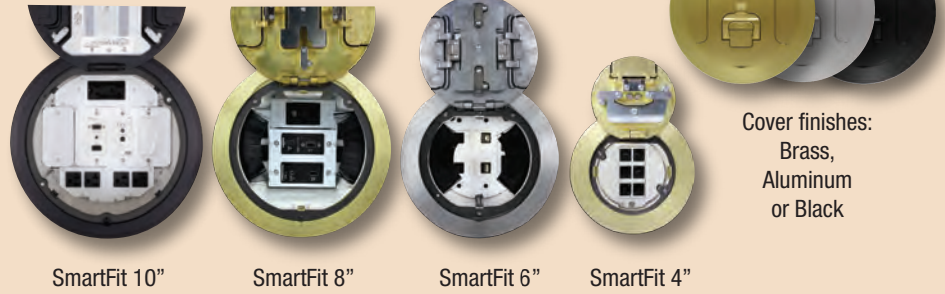
It's Not Just Power Anymore

FSR SmartFit is an innovative system that provides flexible power and AV solutions for fire rated 'Poke-Thrus'. The SmartFit system features a universal cover assembly and multiple sub-plates that install in the fire rated 'Poke-Thrus' and are now available in 4", 6", 8" and 10" sizes.

The system offers three architectural finishes: Aluminum, Brass, and Black, providing an attractive appearance with superior durability.

With the SmartFit system, FSR delivers one consistent look for installations with power and audio/video requirements. There are sub-plates available in the SmartFit line, including a Dual Decora and 3-IPS-insert sub-plate.

FIRE RATED



SmartFit 10"

SmartFit 8"

SmartFit 6"

SmartFit 4"

Cover finishes:
Brass,
Aluminum
or Black



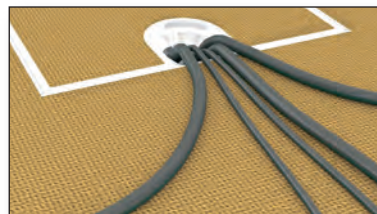
SF-IPS-PB Kit with a SF-BLKT-CV Cover

HEAVY-LOAD



The FLH20 Heavy-Load Capacity Floor Box combines rugged construction and elegant design for carpeted and non-carpeted floors.

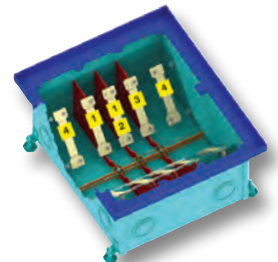
Perfect for Hotels, Ballrooms, Stages, Convention Centers, Museums, Warehouses, Showrooms, and Lobbies.



Compartment Dividers:
Remove or arrange as needed to isolate compartments.



Center Dividers:
Remove to run cables across compartments.



Field Configurable Interior



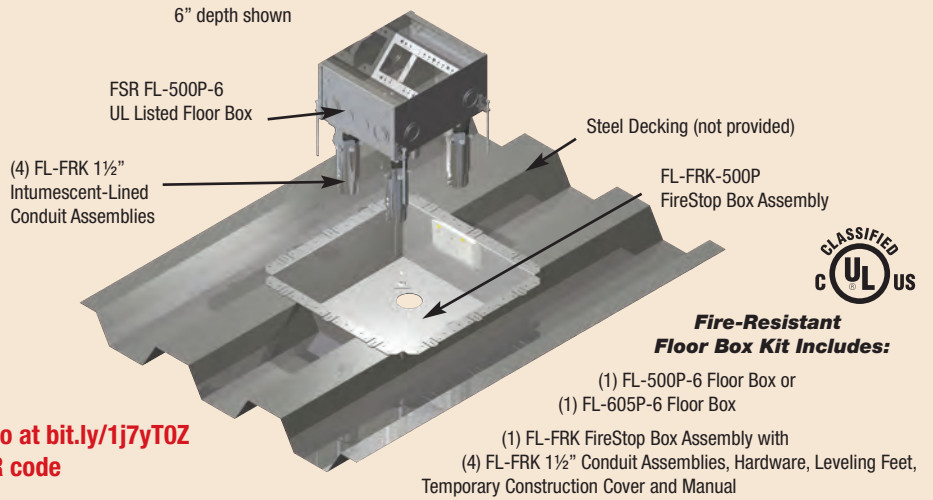
FIRE-RATED



The Fire-Resistant Kit is offered in two sizes: the FL-500P-6-FRK and FL-605P-6-FRK. Both models include a UL listed 3-hour Fire-Resistant Floor Box system comprised of a FireStop box, and four FL-FRK 1½” Intumescent-Lined Conduit Assemblies, hardware and installation instructions. A temporary construction cover is included to protect the floor box interior during installation. Order your finished cover separately.



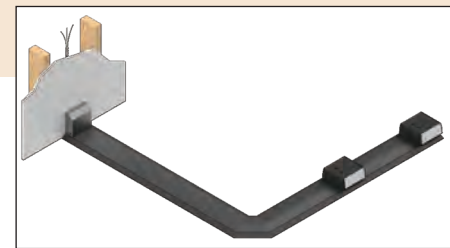
Watch the video at bit.ly/1j7yT0Z or scan this QR code



SMART-WAY RACEWAY SYSTEM



The Smart-Way On-Floor Raceway System is the intelligent choice for wire management. It installs on top of any flooring and provides a quick, easy, affordable and attractive installation. The Smart-Way On-Floor Raceway gets cables where they're needed. The raceway is perfect for collaborative environments or classrooms. The raceway compartments provide ample space for power, communications and A/V connectivity. The Smart-Way is only 0.6" high, ADA compliant, available in slate gray or aluminum finishes and is sold in 6' sections.



INTELLIGENT PLATE SOLUTIONS



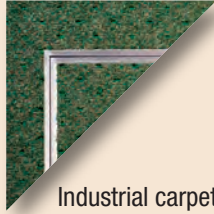
The IPS family of interconnect solutions offers a comprehensive selection of accessories, available in white or black. Simply select a plate that fits your application and available space. Then select your internal connector plate. IPS Plates come with a lifetime warranty. We offer FREE standard labeling. Visit our web site and drag and drop your solutions with IPS Designer.

COVER FINISHES

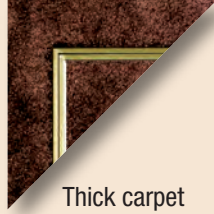
Elegant hand-mitered edging on covers blend with any decor or color combination. For use with virtually all choices of floor covering.



Wood floor installation using 1/2" brass edging on cover



Industrial carpet installed using 1/4" low profile aluminum edging on cover



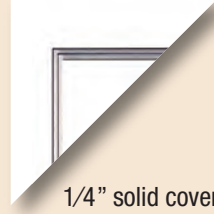
Thick carpet installation using 1/2" brass edging on cover



Ceramic tile installed using 1/2" aluminum edging on cover



1/4" painted edging with industrial carpet



1/4" solid cover in anodized aluminum or painted gray, clay or black



Available in brass, aluminum or painted edging to compliment floor covering.



The new U-Access cover design features a handle to easily lift the cover. All corner fasteners have been removed.

See a larger view at bit.ly/1aKZzT6 or scan this QR Code



FACILITIES USING FSR FLOOR BOXES

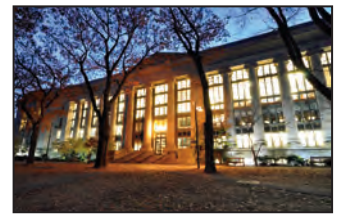
- Apple, Cupertino, CA
- Facebook, Palo Alto, CA
- Howard Hughes Institute, Chevy Chase, MD
- Bank of America, Boston, MA
- Kennedy Center of Performing Arts, Wash., DC
- FBI, Chantilly, VA
- UT Museum of Natural History, Salt Lake City
- ESPN Zone, Las Vegas, NV
- Seminole Hard Rock Casino, Hollywood, FL
- Merck & Company, Rahway, NJ
- Federal Reserve Bank, Chicago, IL
- PIXAR Animation, Emeryville, CA
- Mastercard International, MO
- Princeton University, Princeton, NJ
- San Joaquin County Office of Education, Stockton, CA
- Oregon Museum of Science & Industry, Portland, OR

All FSR Table, Floor, Wall and Ceiling Box CAD drawings and BIM objects are available on our website. For assistance in selecting the proper box to hold your power, data, voice, video, etc., please call us at 1-800-332-FSR1 (3771).

A complete BIM Object Library of all our products is on the ARCAT website (www.ARCAT.com) and is also available embedded in MasterSpec and software.



Hershey Convention Center
Hershey, PA



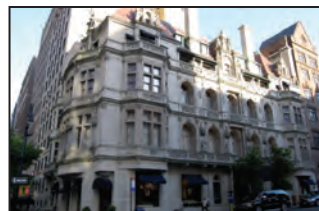
Harvard Law School
Cambridge, MA



Tiger Woods Learning Center
Orange Cty., CA



Marriott Marquis Hotel, NYC



Ralph Lauren, NY



Google, CA



244 Bergen Boulevard · Woodland Park, NJ 07424
800.332.FSR1 · 973.785.4347 · F: 973.785.3318
W: fsrinc.com · E: sales@fsrinc.com

© 2020 FSR, Inc. All Rights Reserved

LIT11890



Specifications are subject to change without notice.