



# FLOOR BOX COMPARISON GUIDE

## CONCRETE POUR IN PLACE

**FL-200**

**FL-400**

**FL-500P**

**FL-600**

**FL-605P-6-FRK**

**FL-700P**

**FL-710P**

**FL-2000**

**FLH20**



## Raised Access

**FL-540P**

**FL-640P**

**FL-1200**

**FL-1300**

**FL-1500**

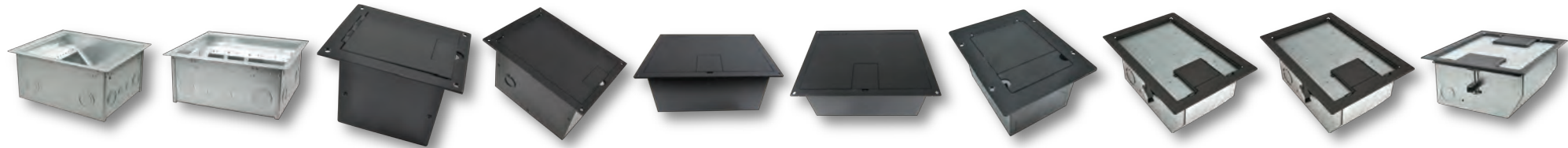
**FL-1550**

**FP-2**

**RFL-AV**

**RFL-D**

**RFL-Q**



## Poke-Thru

**SF-PB**

**SF-PK1**

**SF4**

**SF6**

**SF8**

**SF-10**



### FSR Inc.

244 Bergen Boulevard, Woodland Park, NJ 07424 · Phone: 973.998.2300 · Fax: 973.785.4207  
Web: [www.fsrinc.com](http://www.fsrinc.com) · E-mail: [sales@fsrinc.com](mailto:sales@fsrinc.com) · Order Desk: 1-800-332-FSR1



Specifications are subject to change without notice.

Objects pictured are not to scale.

LIT 1315E



## Back Box Specifications

## Cover Specifications

Floor Type	Model	Box Size *	Box Depth* (")	Gang Capacity (depends on model)	Cover Size*	Cover Styles Available	Cover Finishes Available	Door Types
<b>Concrete Pour in Place</b>	FL-200P	6.15 x 8.75"	3" / 4"	Configurable	6" x 8.75"	1/2 or 1/4 flange/Solid/Flat	Brs, Alu, Gry, Cly, Blk, Slvr	Lift Off / Hinged
	FL-400	10.875" x 12"	5"	Configurable	10.6875" x 12.5"	1/2 or 1/4 flange/Solid/Flat	Brs, Alu, Gry, Blk, Slvr	Hinged
	FL-500P	10" x 12"	2.25" / 3" / 4" / 6" / 8" / 10"	Configurable on 4"-10" deep models	10.5" x 12.5"	1/2 or 1/4 flange/Solid/Flat	Brs, Alu, Gry, Cly, Blk, SS, Slvr	Lift Off / Hinged
	FL-600P	13.5" x 12"	3" / 4" / 6" / 8" / 10"	Configurable on 4"-10" deep models	14" x 12.5"	1/2 or 1/4 flange/Solid/Flat	Brs, Alu, Gry, Cly, Blk, SS, Slvr	Lift Off / Hinged
	FL-700	8" x 14"	5 1/4"	2-SG / 1-3G	7" x 13 1/8"	1/4" flange	Brs, Alu, Blk	Lift Off
	FL-710	8" x 9"	5 1/4"	1-SG / 1-2G	8" x 9"	1/4" flange	Brass	Lift Off
	SF-PB	5.56" round	5.91"	2-SG with many options-See spec sheet	8" dia. carpet 5.62" tile	Over carpet or Tile	Brass, Black, Silver	2 Hinged
<b>High Load</b>	FLH20-0	13" x 11"	6"	2-4G configurable with supplied dividers	14.74" x 12.75"	Solid	Aluminum	Lift Off: 2 door
	FLH20-1	13" X 11"	6"	2-4G configurable with supplied dividers	15" x 13"	1/4" flange	Aluminum	Lift Off: 2 door
<b>Wood Or Linoleum Over Poured Concrete Floors</b>	FL-200P	6.15 x 8.75"	3" / 4"	Configurable	6" x 8.75"	1/2 or 1/4 flange/Solid/Flat	Brs, Alu, Gry, Cly, Blk, Slvr	Lift Off / Hinged
	FL-400	10.875" x 12"	5"	Configurable	10.6875" x 12.5"	1/2 or 1/4 flange/Solid/Flat	Brs, Alu, Gry, Blk, Slvr	Hinged
	FL-500P	10" x 12"	2.25" / 3" / 4" / 6" / 8" / 10"	Configurable on 4"-10" deep models	10.5" x 12.5"	1/2 or 1/4 flange/Solid/Flat	Brass, Silver, SS	Lift Off/Hinged
	FL-600P	13.5" x 12"	3" / 4" / 6" / 8" / 10"	Configurable on 4"-10" deep models)	14" x 12.5"	1/2 or 1/4 flange/Solid/Flat	Blk, Silver, SS	Lift Off/Hinged
	FL-1550	11 7/8" x 8"	6"	Configurable with many options	13.5" x 9.5"	Over carpet or Tile	Black Sandtex	Hinged
	FL-2000	12" x 10"	6"	(optional plates available)	12.5" x 10.5"	Solid fixed	Black	Hinged
<b>Poke Thru</b>	SF-PK1	4" round	14.85 including 1" conduit	2-SG with many options-See spec sheet	8" dia. carpet 5.62" tile	Over carpet or tile	Brass, Black, Silver	2 Hinged
	SF-PK1.5	4" round	14.85 including 1.5" conduit	2-SG with many options-See spec sheet	8" dia. carpet 5.62" tile	Over carpet or tile	Brass, Black, Silver	2 Hinged
	SF-4	4" round	8"	1 - SG with many options	5.53"	Over carpet or tile	Brs, Alu, Blk	Hinged
	SF-6	6" round	8.5"	2-SG with many options-See spec sheet	7.5"	Over carpet or tile	Brass, Black, Silver	Hinged
	SF-8	8" round	8.6"	3-SG with many options-See spec sheet	9.5"	Over carpet or tile	Brass, Black, Silver	Hinged
	SF-10	8" round	8.6"	3-SG with many options-See spec sheet	9.5"	Over carpet or tile	Brass, Black, Silver	Hinged
<b>Carpet over Raised Access Floor Stage &amp; Computer Floors</b>	FL-400	10.875" x 12"	5"	Configurable	10.6875" x 12.5"	1/2 or 1/4 flange/Solid/Flat	Brs, Alu, Gry, Blk, Slvr	Hinged
	FL-540P	10" x 12"	4" / 6" / 8" / 10"	Configurable	11.5" x 13.5"	1/4" flange/Flat	Alu, Brs, Blk, Slvr	Lift Off
	FL-640P	13.5" x 12"	4" / 6" / 8" / 10"	Configurable	15" x 13.5"	1/4" flange/Flat	Alu, Brs, Blk, Slvr	Lift Off
	RFL4.5-D2G	9.5" x 6.25"	4.5"	2-2G	10.91" x 7.65"	Over carpet	Black, Gray, Clay	Lift off: 1 or 2 Door carpet, 1 Door solid
	RFL4.5-D1G	9.5" x 6.25"	4.5"	3-SG (Two power and one for data use only)	10.91" x 7.65"	Over carpet	Black, Gray, Clay	Lift off: 1 or 2 Door carpet, 1 door solid
	RFL3-D1G	9.5" x 6.25"	3.25"	2-SG	10.91" x 7.65"	Over carpet	Black, Gray, Clay	Lift off: 1 or 2 Door carpet, 1 door solid
	RFL4.5-Q2G	10.75" x 9.5"	4.5"	4-2G	12.16" x 10.91"	Over carpet	Black, Gray, Clay	Lift off: 1 or 2 Door carpet, 1 door solid
	RFL4.5-Q1G	10.75" x 9.5"	4.5"	6-SG (Four power and two for data use only)	12.16" x 10.91"	Over carpet	Black, Gray, Clay	Lift off: 1 or 2 Door carpet, 1 door solid
	RFL3-Q1G	10.75" x 9.5"	3"	2-2SG	12.16" x 10.91"	Over carpet	Black, Gray, Clay	Lift off: 1 or 2 Door carpet, 1 door solid
	RFL-QAV	10.75" x 9.5"	4.5	4G configurable with supplied dividers	12.16" x 10.91"	Over carpet	Black, Gray, Clay	Lift off: 1 or 2 Door carpet, 1 door solid
RFL-DAV	9.5" x 6.25"	4.5	2G or 2-1G with supplied divider	10.91" x 7.65"	Over carpet	Black, Gray, Clay	Lift off: 1 Door carpet, 1 door solid	
<b>Wood or Linoleum over Raised Access Floor Stage &amp; Computer Floors</b>	FP-2	7 3/4" x 5 3/4"	4 3/4"	2G	9 3/4" x 7 3/4"	Solid fixed	Black Textured	Hinged
	FL-400	10.875" x 12"	5"	Configurable	10.6875" x 12.5"	1/2 or 1/4 flange/Solid/Flat	Brs, Alu, Gry, Blk, Slvr	Hinged
	FL-1200	4 5/8" x 3 3/8"	4 1/2"	1G, blank and XLR(2) plates included	6" x 4 3/4"	Solid fixed	Black Sandtex	Hinged
	FL-1300	5 1/8" x 7 1/8"	4 7/8"	2G blank plate included	8.5" x 6 1/8"	Solid fixed	Black Sandtex	Hinged
	FL-1500	11 7/8" x 8"	6"	1G with optional plates available	13.5" x 9.5"	Solid fixed	Black	Hinged
<b>Fire Rated</b>	FL-500P-6-FRK	11 7/8" x 8"	6"	1G with optional plates available	10.5" x 12.5"	1/2 or 1/4 flange/Solid/Flat	Black	Lift Off / Hinged
	FL-605P-6-FRK	11 7/8" x 8"	6"	2G with optional plates available	14" x 12.5"	1/2 or 1/4 flange/Solid/Flat	Black	Lift Off / Hinged

Specifications are subject to change without notice. Dimensions are approximate. Always check current spec sheets for complete descriptions of boxes. Detailed Specs & Drawings are available at: [www.fsrrinc.com](http://www.fsrrinc.com)