



Digital Video

Take the hassle out of designing and installing digital video based video systems!

Connect with Confidence

DV SWITCHERS (CONT'D)



DV-HSW-21A* 2X1 HDMI Digital Switcher

The DV-HSW-21A is a 2x1 HDMI switcher capable of handling 4k resolutions (4k 2160p [3840x2160] @60Hz (4:2:0) in a small footprint. This switcher provides LED Feedback for contact closures and will work with FSR's Table Boxes that have integrated LED's and push buttons for a compact 2 HDMI HuddleVU System. Features include a locking 12V power supply, control via: front panel push-buttons, contact closure, RS-232 via Phoenix 3-pin, and Auto-Sensing.



DV-MFSW-21A* 2X1 VGA/HDMI Digital Switcher

The DV-MFSW-21A is a HDMI + VGA & Audio to HDMI switcher capable of handling 4k resolutions (4k 2160p [3840x2160] @60Hz (4:2:0) in a small footprint. This switcher provides LED Feedback for contact closures and will work with FSR's Table Boxes that have integrated LED's and push buttons for a compact HuddleVU System. Features include a locking 12V power supply; control via front panel push-buttons, contact closure, RS-232 via Phoenix 3-pin, and Auto-Sensing.



MODELS AVAILABLE THAT OFFER CEC SUPPORT

The DV-HSW-21CEC and DV-MFSW-21CEC models can automatically power-up displays that have CEC capability when a source is connected. They can also power the display off after the input signal is removed for 2 minutes. Using this new CEC feature along with the auto-sense feature allows users to simply connect an input cable to a laptop or other source, and the unit will then switch to that input and turn the display on. Disconnecting the input will turn off the display after a 2-minute delay.

* Switchers on these two pages, marked with an *, can be easily integrated with FSR's full line of HuddleVU collaboration systems and furniture solutions. They can also be easily controlled via our FLEX Control Systems.



DV DISTRIBUTION AMPLIFIER

DV Distribution Amps are used where a single HD source needs to feed multiple displays such as classrooms and overflow areas.

DV-HDA-14AUD HDMI 1X4

Distribution Amplifier with Built-in Audio De-embedder

- Advanced EDID management for sources & displays
- Extract the audio from HDMI source via analog outputs (RCA)
- HDTV Resolutions: 1080P 60Hz., 4K 2160p (3840x2160) @30Hz
- VESA Standard Resolutions to UXGA (1600x1200) @ 60Hz



DV SWITCHERS (CONT'D)



DV-HSW-21A* 2X1 HDMI Digital Switcher

The DV-HSW-21A is a 2x1 HDMI switcher capable of handling 4k resolutions (4k 2160p [3840x2160] @60Hz (4:2:0)) in a small footprint. This switcher provides LED Feedback for contact closures and will work with FSR's Table Boxes that have integrated LED's and push buttons for a compact 2 HDMI HuddleVU System. Features include a locking 12V power supply, control via: front panel push-buttons, contact closure, RS-232 via Phoenix 3-pin, and Auto-Sensing.



DV-MFSW-21A* 2X1 VGA/HDMI Digital Switcher

The DV-MFSW-21A is a HDMI + VGA & Audio to HDMI switcher capable of handling 4k resolutions (4k 2160p [3840x2160] @60Hz (4:2:0)) in a small footprint. This switcher provides LED Feedback for contact closures and will work with FSR's Table Boxes that have integrated LED's and push buttons for a compact HuddleVU System. Features include a locking 12V power supply; control via front panel push-buttons, contact closure, RS-232 via Phoenix 3-pin, and Auto-Sensing.



MODELS AVAILABLE THAT OFFER CEC SUPPORT

The DV-HSW-21CEC and DV-MFSW-21CEC models can automatically power-up displays that have CEC capability when a source is connected. They can also power the display off after the input signal is removed for 2 minutes. Using this new CEC feature along with the auto-sense feature allows users to simply connect an input cable to a laptop or other source, and the unit will then switch to that input and turn the display on. Disconnecting the input will turn off the display after a 2-minute delay.

* Switchers on these two pages, marked with an *, can be easily integrated with FSR's full line of HuddleVU collaboration systems and furniture solutions. They can also be easily controlled via our FLEX Control Systems.



DV DISTRIBUTION AMPLIFIER

DV Distribution Amps are used where a single HD source needs to feed multiple displays such as classrooms and overflow areas.

DV-HDA-14AUD HDMI 1X4

Distribution Amplifier with Built-in Audio De-embedder

- Advanced EDID management for sources & displays
- Extract the audio from HDMI source via analog outputs (RCA)
- HDTV Resolutions: 1080P 60Hz., 4K 2160p (3840x2160) @30Hz
- VESA Standard Resolutions to UXGA (1600x1200) @ 60Hz



HDMI 2.0 Digital Ribbon Cables

FSR's Next Generation Digital Ribbon Cables utilize a proprietary technology to allow high speed, high definition HDMI signal transmission over distances of up to 328 ft.

DR-H2.0-xxM HDMI 2.0 Digital Ribbon Cable

- HDMI 2.0 with 4k@60Hz YUV 4:4:4 and HDCP 2.2 compliance
- Now supports HDMI 2.0, DDC for HDCP, EDID, PCM, Dolby, DTS-HD and True HD audio
- UL Listed, Plenum Rated (Type CMP, CMR) hybrid copper and polymer cables
- Overcomes distance limitations of conventional HDMI cables
- Integrated Aramid cords increases pull strength to 44lbs
- Cable and connectors easily fit within a 1" conduit
- ARC compatible

DR-H2.0-SR-xxM Digital Ribbon Cable with SS Reinforced Jacket

- Stainless Steel Reinforced Construction
- 4K-60Hz 4:4:4 High Speed Compatible with direct connection from Source to Display
- Now supports HDMI 2.0, DDC for HDCP, EDID, PCM, Dolby, DTS-HD and True HD audio
- UL Listed, Plenum Rated (Type CMP, CMR) hybrid copper and polymer cables
- Overcomes distance limitations of conventional HDMI cables
- Enhanced Pull Strength of 100 lbs.
- ARC Compatible
- Suitable for Rough Service. Short term load limit of 2000N/100mm (450lbs./4")

DR-EDID

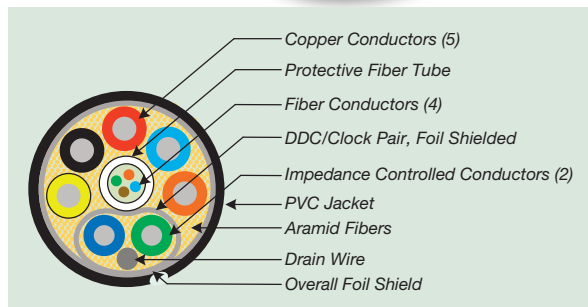
The DR-EDID Emulator is designed to manipulate the EDID information provided to a connected HDMI source or any device connected prior to the unit in the HDMI chain.

- 16 preinstalled EDID
- Passive inline device – No external power needed
- Bi-directional (bi-gender). It can be used in either direction
- HDCP 1.4 / 2.2 Compatible
- Hot pluggable
- Supports HDMI 1.3/1.4/2.0
- Supports up to 4K/UHD @ 60Hz
- Learn and test the EDID from any Display

NEXT GENERATION
DIGITAL RIBBON CABLES

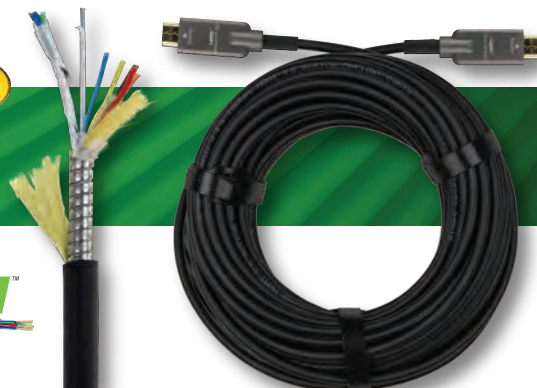
NEW

Plenum Rated  **US**



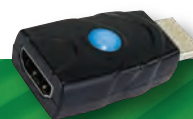
NEW

CoilGuard™



DR-EDID
EMULATOR

NEW



HDBaseT™ 100 METER TRANSMITTERS & RECEIVERS



Any 100 Meter Transmitter (Tx) can be used with any 100 Meter Receiver (Rx)

- HDBaseT™ 5Play™ Units that transmit uncompressed full HD digital HDMI video, Audio, Control (Bi-directional IR & RS-232), 100BaseT Ethernet, and Bi-directional PoH.
- Input resolutions: Supports 4k 2160p (3840x2160) @60Hz (4:2:0) / 1080P / 1080i / 720P / 576P / 480P / 576i / 480i
- For best resolution and ESD performance Shielded CAT-6A cable is recommended.
- HDBaseT™ transmits out to 100 Meters via Shielded CAT-6A cable at resolutions up to 1080p @60Hz (48 bpp) or 4k 2160p (3840x2160) @60Hz (4:2:0).
- Sets are powered via 12V 2A DC power supply which allows 2-way powering. Power the set from the Transmitter or the Receiver (TX-RX or RX-TX).
- Power supply included with all receivers.

HD-HPCWP-Tx Switcher / Transmitter Wall Plate

HDBaseT™ HDMI + VGA & Audio Switcher 2-gang Decora style wall plate transmitter. HDBaseT™ 5-Play device that transmits HD Video, Audio, Bi-directional Control (IR & RS-232), Ethernet, and Power via 1 CAT-6A shielded cable out to 100 Meters. Powered by any FSR 100m Receiver or locally.

HD-HWP-Tx Transmitter Wall Plate

HDBaseT™ HDMI 2-gang Decora style wall plate transmitter (HDMI only version of HD-HPCWP-Tx wall plate).

HD-H-SP-Tx Transmitter

True HDBaseT™ 5-Play device that transmits HD Video, Audio, Bi-Directional Control (IR & RS-232), Ethernet, and Power.

HD-H-SP-Rx Receiver

HDBaseT™ 5-Play Receiver, receives HD Video, Audio, Bi-Directional Control (IR & RS-232), Ethernet, and Power (ships with power supply).

AUTO SWITCHING



HD-HPCWP-TX

HD-HWP-TX

HD-HWP-TX BACK



HDBaseT™ 100 METER TRANSMITTERS & RECEIVERS WITH USB

HD-HPCUWP-TX 100m

HDBaseT 2.0 Transmitter Wall Plate

The HD-HPCUWP-TX is a 2x1 switcher for HDMI and VGA w/audio inputs with an HDBaseT 2.0 output. It features standard two-gang mounting, with one HDMI, one VGA plus audio input and a separate stereo audio channel on a 3.5 mm connector. The USB port is configurable to be a host or a device. HDMI signals up to 4K/UHD@60 (YUV 4:2:0 color sub-sampling), VGA input signals up to 1920 x 1200, embedded audio, and control signals can be extended up to 328 feet (100 meters).

AUTO
SWITCHING



HD-HU-SP-Tx & HD-HU-SP-Rx HDBaseT 2.0 and USB Transmitter & Receiver Sets

Based on HDBaseT™ 2.0 Technology these true HDBaseT 5-Play devices transmit HD Video (up to 4k @60hz.), Audio, Bi-Directional Control (IR & RS-232), Ethernet, and Bi-directional Power via 1 CAT-6A shielded cable out to 100 Meters. They also carry two-way USB 2.0 on the same cable. There is also an analog audio-in on the TX and analog audio-out on the RX unit.



HDBaseT™ 70 METER TRANSMITTER AND RECEIVER 4K@ 60Hz 4:4:4

HD-H704K HDBaseT™ 70 Meter

Ultra Slim-Pack Transmitter & Receiver Set

70 Meter Class B HDBaseT™ Rx/Tx set transmits uncompressed full HD Digital HDMI Video, Audio, Control (Bi-Directional IR & RS-232), and Power (No Ethernet). HDBaseT™ transmits out to 70 Meters via shielded CAT-6A cable at resolutions up to 1080p @60Hz (48 bpp) or up to 4K@60Hz 4:4:4, HDCP 2.2. Set comes with TX, Rx, Power Supply, IR Emitters & receivers and mounting ears.



FSR is now stocking West Penn HDBaseT™ Certified Category 6A Plenum Cable Assemblies in pre-terminated lengths from 50' to 330' (15 meter to 100 Meter). These plenum rated cables come in specific lengths with the shielded connectors already attached and will work with all of our FSR HDBaseT™ Products.



Specifications are subject to change without notice.
HDBaseT™ and the HDBaseT Alliance logo are
trademarks of the HDBaseT Alliance.

244 Bergen Boulevard · Woodland Park, NJ 07424
800.332.FSR1 · 973.785.4347 · F: 973.785.3318
W: fsrinc.com · E: sales@fsrinc.com

© 2017 FSR, Inc. All Rights Reserved.

LIT1385K