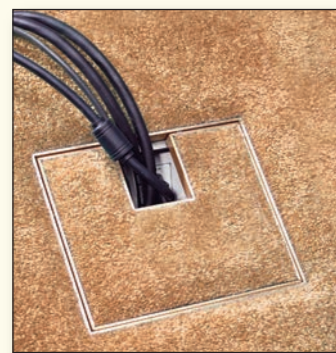
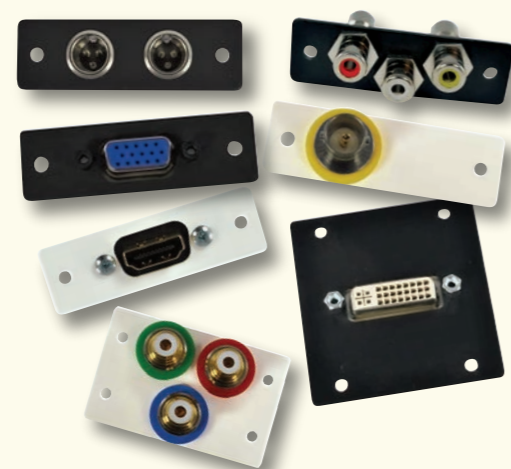


## Built for all Venues and all Surfaces

- Easily accessible floor boxes provide practical solutions for cable storage.
- A large hinged section of the cover folds back to allow full access to internal cables and connector plates.
- A smaller hinged trap door fastens back to create an efficient cable exit.
- Cable storage in the box allows unencumbered travel. ADA compliant.
- All Steel construction.
- Brass or aluminum low-profile edging blends seamlessly into decor.
- Hand mitered carpet edges provide elegant finishing touches.
- 11 gauge steel covers installed flush with floor. Only hand mitered carpet edges are visible when covers are in place.



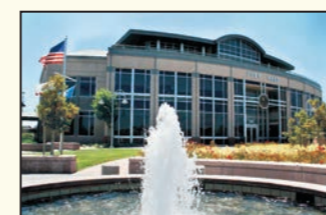
## Intelligent Plate Solutions



The IPS family of interconnect solutions offers a comprehensive selection of accessories, available in white, ivory or black. Simply select a plate that fits your application and available space. Then select your internal connector plate. IPS Plates come with a lifetime warranty. We offer FREE standard labeling. Visit our web site and drag and drop your solutions with IPS Designer.

## Facilities Using FSR Floor Boxes

Apple, Cupertino, CA  
 Facebook, Palo Alto, CA  
 Google, CA  
 Howard Hughes Institute, Chevy Chase, MD  
 Bank of America, Boston, MA  
 Kennedy Center of Performing Arts, Wash., DC  
 Mohegan Sun, CT  
 New England School of Law, Boston, MA  
 FBI, Chantilly, VA  
 All Well Center Ice Arena, Plymouth, NH  
 UT Museum of Natural History, Salt Lake City  
 ESPN Zone, Las Vegas  
 Seminole Hard Rock Casino, Hollywood, FL  
 Merck & Company, Rahway, NJ  
 Federal Reserve Bank, Chicago, IL  
 Miami-Dade Fire Rescue, FL  
 Friendship Baptist Church, Cincinnati, OH  
 PIXAR Animation, Emeryville, CA  
 Mastercard International, MO  
 Princeton University, Princeton, NJ  
 Ocean House Hotel, Watch Hill, RI  
 Harvard Law School, MA  
 Broward County Courthouse, FL  
 Meadowlands Racetrack, NJ  
 Ralph Lauren, NY  
 Northeast Library, Washington, DC  
 Lindt Chocolate, NH  
 Freddie MAC, VA  
 New England Law, Boston, MA  
 Alpha Natural Resources, Julian, WV  
 San Joaquin County Office of Education, Stockton, CA  
 Princeton Academy of the Sacred Heart, Princeton, NJ  
 Oregon Museum of Science & Industry, Portland, OR



Foster City City Hall  
Foster City, CA



Metropolitan Convention Center  
Columbia, SC



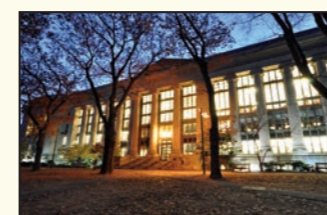
Saint Agnes Medical Center  
Fresno, CA



Tiger Woods Learning Center  
Orange Cty., CA



Hershey Convention Center  
Hershey, PA



Harvard Law School  
Cambridge, MA



Valleydale Church, Birmingham, AL



Marriott Marquis Hotel, NYC



Ralph Lauren, NY



Google, CA



Meadowland Racetrack, NJ



Lindt Chocolate, NH

All FSR Table, Floor, Wall and Ceiling Boxes CAD drawings are available on our DVD.

For your FREE COPY, or for assistance in selecting the proper box to hold your power, data, voice, video, etc., please call us at 1-800-332-FSR1 (3771).

A complete BIM Object Library of all our products is on the ARCAT website ([www.ARCAT.com](http://www.ARCAT.com)) and is also available embedded in MasterSpec and SpecAgent software.



244 Bergen Boulevard · Woodland Park, NJ 07424  
 800.332.FSR1 · 973.785.4347 · F: 973.785.3318  
 W: [fsrinc.com](http://fsrinc.com) · E: [sales@fsrinc.com](mailto:sales@fsrinc.com)  
 © 2015 FSR, Inc. All Rights Reserved

LIT1189J

## Add an FSR Table, Wall, Ceiling Box, or LITE-it

### Table Boxes and Retractors

A wide variety of table boxes and retractors that are unique and upscale, meeting the aesthetic demands of today's consultants, architects and clients. Brass, black, bronze and nickel finishes, a variety of sizes, shapes, and accessories are available from stock.

Patent Number US D553,306 S

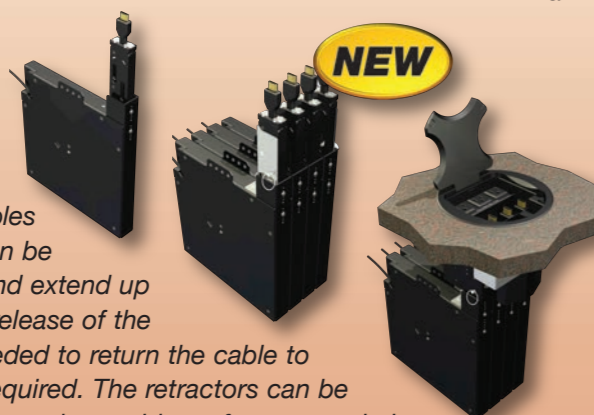


T3-AC2 table box is essential for convenient table top access. The 3 1/2" stylish box can be matched to any décor.



Elegantly mount any gooseneck microphone with this T3-MJ mini table box.

FSR's cable management system offers convenience as well as cable storage and protection, hiding unsightly cables when not in use. The cables can be quickly deployed by the user and extend up to four feet. A simple pull and release of the extended cable is all that is needed to return the cable to the reel. No button release is required. The retractors can be mounted in a horizontal position under a table surface to maximize space and provide clearance for seating.



**NEW**



PWB-250  
Project  
Wall Box



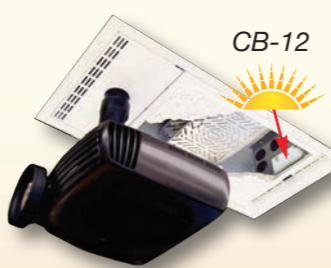
PWB-353  
Project Wall Box

Connections on the wall become safe, simple and secure using an FSR wallbox.



### Ceiling Boxes and Wall Enclosures

Remove the unsightly equipment boxes hanging off projector poles and mount them in this architecturally-designed ceiling enclosure. Many styles, various price ranges, and "Smart and Green" modules make these boxes perfect for classrooms, boardrooms, meeting rooms and public spaces. These are your equipment racks for ceilings and walls.



CB-12



PWB-250  
Project  
Wall Box



PWB-353  
Project Wall Box

Connections on the wall become safe, simple and secure using an FSR wallbox.



PWB-353  
Project Wall Box



P: 800.332.FSR1 · W: [fsrinc.com](http://fsrinc.com) · E: [sales@fsrinc.com](mailto:sales@fsrinc.com)



## Floor Boxes



205 Westwood Ave, Long Branch, NJ 07740  
 Phone: 866-94 BOARDS (26273) / (732)-222-1511  
 Fax: (732)-222-7088 | E-mail: [sales@touchboards.com](mailto:sales@touchboards.com)

Elegant Infrastructure  
 Cable Access Solutions  
 for Any Type of Floor

## Cover Finishes

Elegant hand-mitered edging on covers blend with any decor or color combination. For use with virtually all choices of floor covering.



Available in brass, aluminum or painted edging to compliment floor covering.



The new U-Access cover design features a handle to easily lift the cover. All corner fasteners have been removed.

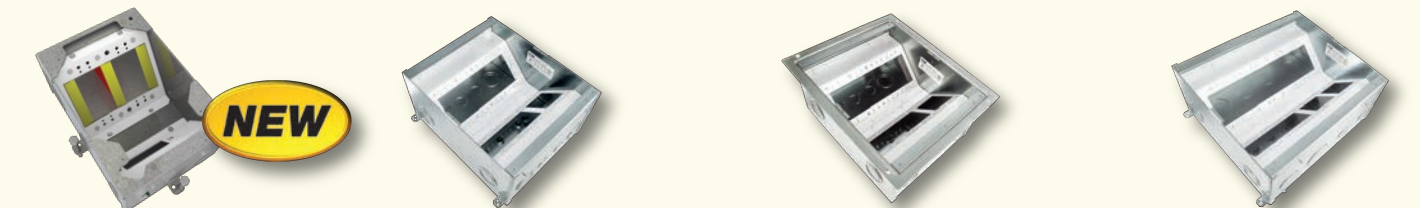
See a larger view at [bit.ly/1aKZzT6](http://bit.ly/1aKZzT6) or scan this QR Code

## Back Boxes

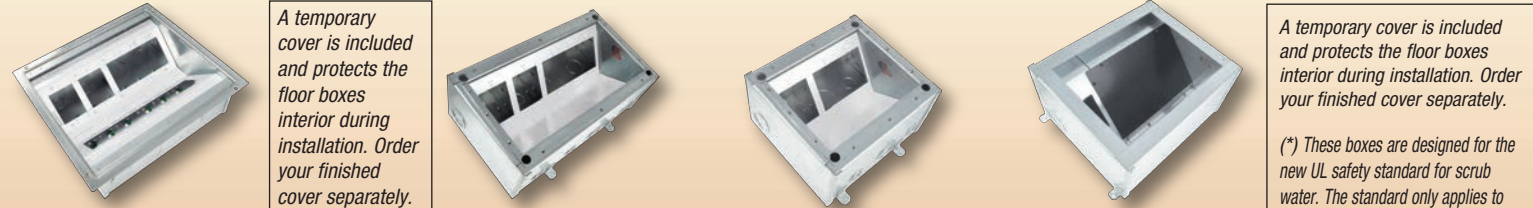
The steel construction makes FSR back boxes extremely sturdy. They are your solution for power, audio, video, telecommunications and data.

FL-500P, 540P, 600P and 640P have reconfigurable internal brackets. 6" and deeper back boxes also have cable "pass-through" capability.

LITE-it add it to every box!



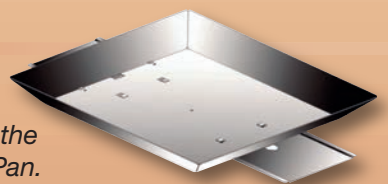
Model #	FL-200	FL-500P (*)	FL-540P	FL-600P (*)
Size:	8 3/4" X 6"	10" X 12"	10" X 12"	13.5" X 12"
Depth:	3", 4"	2-1/4", 3", 4", 6", 8", 10"	4", 6", 8", 10"	3", 4", 6", 8", 10"
Cover Size:	8 3/4" X 6" X 1/8"	10-1/2" X 12-1/2" X 1/8"	10-1/2" X 12-1/2" X 1/8"	14" X 12-1/2" X 1/8"
Knockouts:	8 total, either 1" and 1-1/4"	12 total, either 1" and 1-1/4"	8 total either 1" and 1-1/4"	2 Sloping field transformable
Brackets:	1 Sloping field transformable, 1 Sloping Decora Opening	2 Sloping field transformable	2 Sloping field transformable	14 total either 1" and 1-1/4"
Floor Type:	Concrete	Concrete	Raised access, stage & computer floors	Concrete



Model #	FL-640P	FL-700 (*)	FL-710 (*)	FL-2000
Size:	13.5" X 12"	8" X 14"	8" X 9"	10" X 12"
Depth:	4", 6", 8", 10"	5-1/4"	5-1/4"	6"
Cover Size:	14" X 12-1/2" X 1/8"	8" X 14" X 1/8"	8" X 9" X 1/8"	10-1/2" X 12-1/2"
Knockouts:	14 either 1" and 1-1/4"	6 either 1/2" and 3/4"	6 either 1/2" and 3/4"	2 total in AC section: 1 rear either 1/2" and 3/4"
Brackets:	2 Sloping field transformable	1 Sloping	1 Sloping	4 total in AV section: 3 rear and 1 right side either 1" and 1-1/4"
Floor Type:	Raised access, stage & computer floors	Concrete	Concrete	1 Sloping

## Pour Pan

The FSR Pour Pan is the answer to Floor Box installations that are on grade. If your application is a poured concrete floor and the box rests on soil, rock or gravel, you must first install the Pour Pan.



**Touchboards**  
 205 Westwood Ave, Long Branch, NJ 07740  
 Phone: 866-94 BOARDS (26273) | (732)-222-1511  
 Fax: (732)-222-7088 | E-mail: sales@touchboards.com

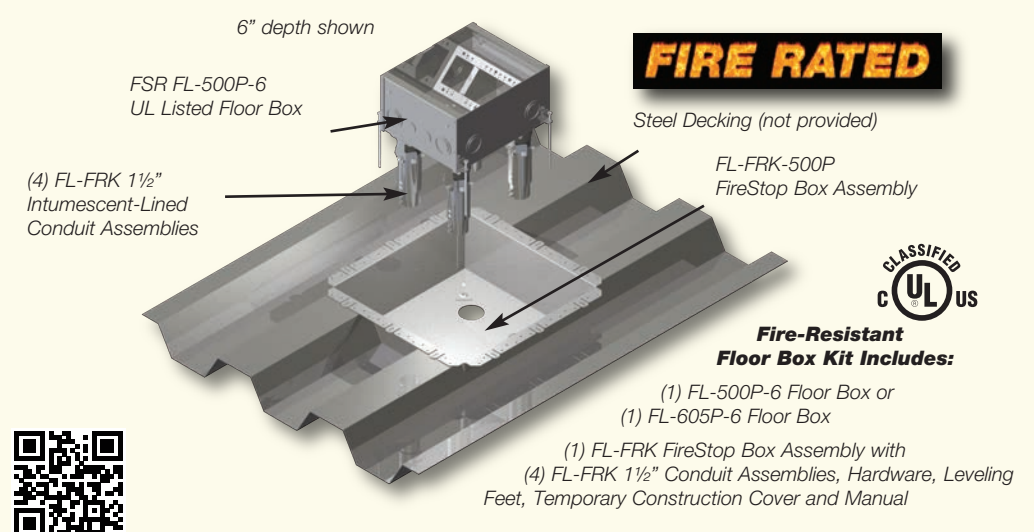
## Fire-Resistant Floor Box Solutions

NEW

Our Fire-Resistant floor solutions expand the versatility of our floor box line by providing enhanced, fire-resistant versions of our existing products.

The Fire-Resistant Kit is offered in two sizes: the FL-500P-6-FRK and FL-605P-6-FRK. Both models include a UL listed 3-hour Fire-Resistant Floor Box system comprised of a FireStop box, and four FL-FRK 1 1/2" Intumescent-lined Conduit Assemblies, hardware and installation instructions. A temporary construction cover is included to protect the floor box's interior during installation. Order your finished cover separately.

Watch the video at [bit.ly/1j7yT0Z](http://bit.ly/1j7yT0Z) or scan this QR code



FIRE RATED

CLASSIFIED UL US

Fire-Resistant Floor Box Kit Includes:

- (1) FL-500P-6 Floor Box or (1) FL-605P-6 Floor Box
- (1) FL-FRK FireStop Box Assembly with (4) FL-FRK 1 1/2" Conduit Assemblies, Hardware, Leveling Feet, Temporary Construction Cover and Manual

## SmartFit™ (Poke-Thru)

Buy American Compliant

FIRE RATED

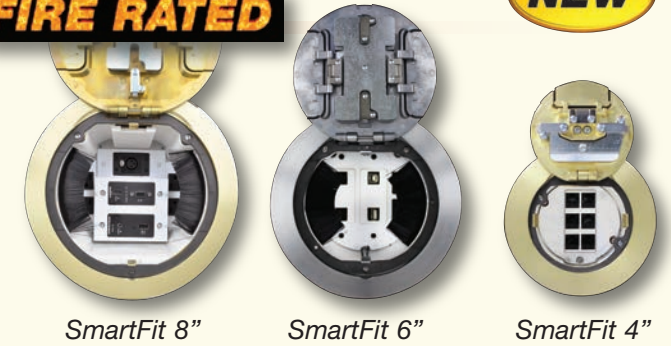
NEW

It's Not Just Power Anymore

FSR SmartFit is an innovative system that provides flexible power and AV solutions for fire rated Poke-Thrus'. The SmartFit system features a universal cover assembly and multiple sub-plates that install in the fire rated Poke-Thrus' and are now available in 4", 6", and 8" sizes.

The system offers three architectural finishes: Aluminum, Brass, and Black, providing an attractive appearance with superior durability.

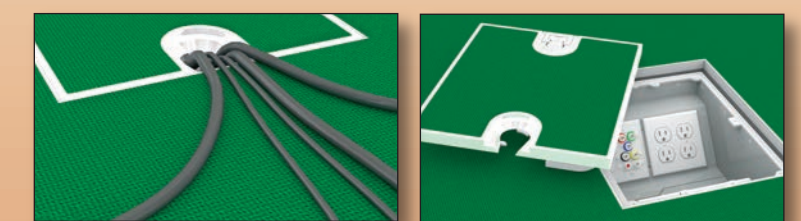
With the SmartFit system, FSR delivers one consistent look for installations with power and audio/video requirements. There are sub-plates available in the SmartFit line, including a Dual Decora and 3-IPS-insert sub-plate.



## The FLH20 "Super" Floor Box

The FLH20 High Load Capacity Floor Box combines rugged construction and elegant design for carpeted and non-carpeted floors.

Perfect for ballrooms, convention spaces, and high traffic areas where heavy equipment such as forklifts, automobiles, scissor lifts, and portable stages are used.

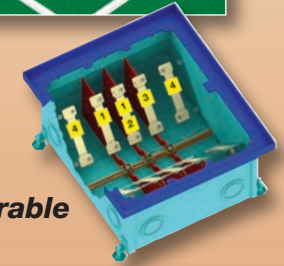


U.S. PAT. 7,989,710

**Compartment Dividers:** Remove or arrange as needed to isolate compartments.

**Center Dividers:** Remove to run cables across compartments.

Field Configurable Interior



## Raised Floor Boxes

The all metal construction provides one or two cable access doors, or a solid metal cover.

FSR's Raised Access Floor Boxes are designed to handle a variety of connections and applications.

The RFL Series of Floor Boxes is available in many sizes and depths. The all-metal construction is built to handle the rigors of a floor environment, yet blends into the floor pattern.

The beveled steel carpet rim is available standard in gray, black or clay. We will provide custom finishes to match your design. Covers are available with one or two access doors, or a solid metal cover.



The RFL-AVs

## Stage Boxes

One piece all welded design providing both strength and ease of installation. Cover is painted with Sandtex for a non-skid finish, available in black or oak.



Model #	FP-2-BLK	FL-1200	FL-1300	FL-1500
Size:	7-3/4" X 5-3/4"	3-3/8" X 4-5/8"	5-1/8" X 7-1/8"	11 7/8" X 8"
Depth:	4-3/4"	4-1/2"	4-7/8"	6"
Cover Size:	7-3/4 X 5-3/4" X 1/8"	4-3/4 X 6" X 1/8"	6-1/8" X 8-1/2" X 1/8"	13-1/2" X 9-1/2" X 3/16"
Knockouts:	Open area for a two gang box. (Customer supplied)	1 rear either 1/2" and 3/4" 1 bottom either 1/2" and 3/4" 1 Sloping	2 rear concentric either 1/2" and 3/4" 1 bottom concentric either 1/2" and 3/4" 1 each left and right sides concentric 1/2" and 3/4"	4 rear either 1" and 1-1/4", 4 bottom either 1" and 1-1/4"
Brackets:	1 Sloping	1 Sloping	1 Sloping	1 Sloping
Floor Type:	Raised access, stage & computer floors	Raised access, stage & computer floors	Raised access, stage & computer floors	Wood or linoleum over raised access, stage & computer floors

## New UL Requirements

UL has added a new requirement for UL listing. Boxes to be installed in concrete must pass a "scrub water" test. FSR passed the test and exceeded the specs. Our boxes are approved, not only for carpet over concrete, but wood and tile as well. This requirement is only for boxes in concrete, it is not required for raised access or stage floors.

## LITE-it

NEW



LITE-it easily provides lighting in floor, wall and ceiling boxes, or anywhere a work light is needed. LITE-it can be used with all our Core Solutions. Add LITE-it to every box!

Look for this symbol to see where LITE-it can be installed.

