



CEILING SOLUTIONS



Protect and Secure your Infrastructure Connections

FSR Works For You

OVERHEAD RACK ENCLOSURES



CB-224 shown with pole



CB-224 shown without pole

Part of FSR's Infrastructure Solutions

Audio, Video and Data designers and installers struggle to find space to mount equipment. Floor space is becoming increasingly expensive, and the equipment security is always on people's minds.

Overhead Rack Enclosures are the answer! FSR's enclosures provide mounting space without impacting floor space. We use the space above the drop ceiling or on the wall near the ceiling. This also keeps the equipment separate from the room space, providing an added level of security not available in traditional floor and wall racks.

Overhead Rack Enclosure products are available in two categories — Ceiling Boxes and Wall Enclosures.

The Ceiling Boxes mount above a standard "T" grid drop ceiling, and are available in 3 sizes. They have the capacity to hold 2 half rack sizes all the way up to 4 full width rack devices.

Mounting the CB-12 or CB-22 ceiling boxes in a Drywall ceiling is now possible using one of the CB-SR12 or CB-SR22 Drywall Mounting Frames as shown inside.

CB-12



CB-24



CB-224



Ceiling Boxes showing the ETL logo are approved to UL60950-1 and UL2043-2006 Standards.



CB-12



Plenum Rated

The CB-12 series is a 1' x 2' Ceiling Box designed to fit into a standard 2' x 2', 2' x 4' drop ceiling or a drywall ceiling using of the CB-SR12 FRAMES. It features space for 2 half rack devices and has 4 AC receptacles in the box as well as 1 external AC outlet in the room. A master power switch is accessible from the room.



CB-12 shown closed

The 'P' or Pole option adds a p

CB-12-PTF



The CB-12-PTF ceiling enclosure ensures the safety of the PoE nodes from the start. The CB-12-PTF can be mounted in any location such as, acoustical tile ceilings, hard deck ceilings using CB-SR12 or enclosure mounting with either a threaded rod or a cable kit. The ceiling enclosure holds 12 Platformatics Nodes – PoE-LN2, has a removable card cage and has venting on the sides and on top to keep nodes within the permissible operating temperatures. Having the PoE nodes already installed in our ceiling enclosure will help you reduce installation and service time.



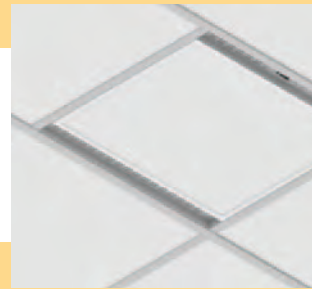
CB-12-PTF

CB-22



Plenum Rated

The CB-22 series is a 2' x 2' Ceiling Box designed to fit into a standard 2' x 2', 2' x 4' drop ceiling or a drywall ceiling using of the CB-SR22 FRAMES as shown below. It features space for 2 full width rack devices and has 5 AC receptacles in the box and 1 external AC outlet in the room. A master power switch is accessible from the room.

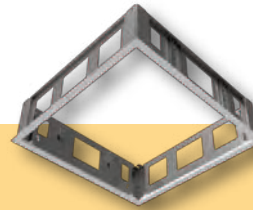


CB-22 shown closed

The 'P' or Pole option adds a p
The 'S' or Smart option adds c
draw of specific outlets, allowi

CB SERIES DRYWALL MOUNTING "FRAMES"

If you want to mount our popular ceiling boxes in a drywall ceiling, you need the "FRAME". The CB-SR12 and CB-SR22 drywall mounting frames are expressly designed to easily mount FSR's 2' x 2' (CB-22) and 1' x 2' (CB-12) Ceiling Enclosures. The mounting frame can be installed in the ceiling opening using threaded rod, stranded wire cable, or screws through specific holes in the sides of the unit. The ceiling box can then be hung vertically, via the included cables, while the equipment is mounted and wired allowing convenient access to the components and cables. The ceiling box can then be lifted into the frame and locked into place. The ceiling box interior can be accessed in the same way for future re-cabling and service. Ceiling boxes and frames are ordered separately depending on the type of ceiling.



Frame

CB-224



Plenum Rated

The CB-224 series is a 2' x 2' high capacity ceiling box designed to fit into a standard 2' x 2' or 2' x 4' drop ceiling. It features a drop-down 4RU cage for easy installation and mounting of rack equipment. Cable guides for service loops are provided to allow the equipment to be connected in the down position and then slid up into place. The drop-down cage features pneumatic assistance to counter some of the weight of the equipment installed. The CB-224 has 6 AC outlets in the box and 1 in the room. A master power switch is accessible from the room.



CB-224 shown closed

The 'P' or Pole option adds a
The 'S' or Smart option adds
specific outlets, allowing the



CB-12 open showing installed equipment



CB-12P with optional Projector Pole Mount

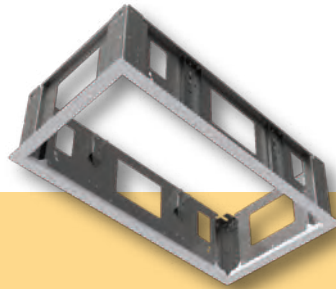


CB-12P with optional Projector Pole Mount open with installed equipment

projector pole adapter. This allows cabling to pass from inside the ceiling box, down the pole and to the projector, providing a nice clean installation.



CB-12-PTF with acoustic ceiling tile



CB-SR12 drywall mounting frame



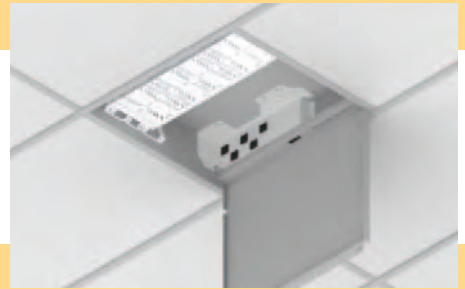
CB-12-PTF 90° mount in soffit



CB-22 open showing installed equipment



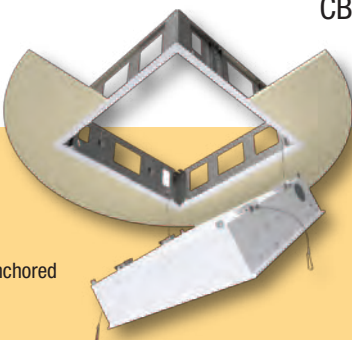
CB-22P with optional Projector Pole Mount



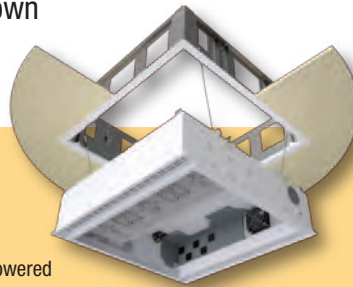
CB-22P shown open rotated 90° to show power outlets

projector pole adapter. This allows cabling to pass from inside the ceiling box, down the pole and to the projector providing a nice clean installation. cooling fans and the Smart Power module. The module allows the power in the box to be either remotely controlled or switched based on the current draw of the power in the box to be switched on and off automatically with the projector.

CB-SR22 shown



Anchored



Lowered



In place



CB-224 shown open



CB-224P shown with equipment enclosure extended



CB-224P shown closed with optional projector pole adapter

projector pole adapter. This allows cabling to pass from inside the ceiling box down the pole and to the projector, providing a nice clean installation. cooling fans and the Smart Power module. This module allows the power in the box to be either remotely controlled or switched based on the current draw of the power in the box to be switched on and off automatically with the projector.

MODULAR LINX SYSTEM PRE-WIRED CEILING BOXES

With the MLS pre-wired ceiling boxes, the electrical contractor can install and power the MLS starter cable at any time during the initial construction phase. The CB-MLS eliminates coordinating return visits to the site to connect AC to the ceiling box after the AV contractor completes hanging the unit.

CB-12-MLS



CB-22-MLS

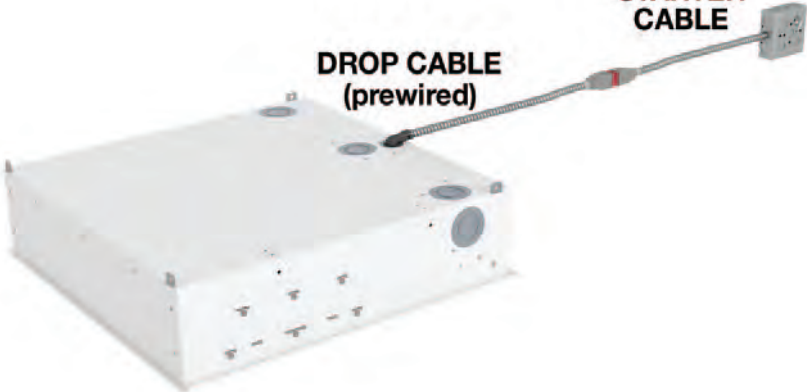


CB-224-MLS



STARTER
CABLE

DROP CABLE
(prewired)



SKYBOX SERIES

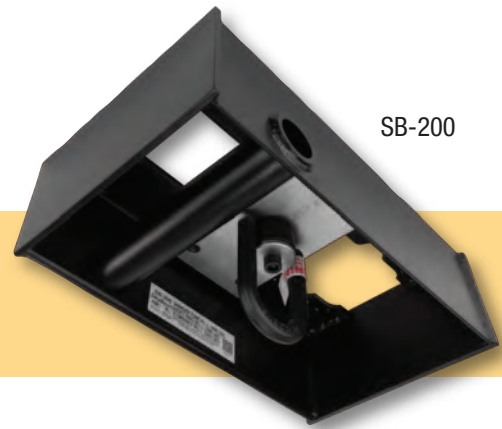
The SkyBox rigging point has been specifically designed to create permanent rigging point for trusses, lighting systems, line arrays and speakers in multi-use architectural environments. The SkyBox handles the rigors of daily staging events while remaining out of view when not in use.

The SkyBox is structurally mounted above the ceiling grid and easily exposed for use by removing the ceiling tile or opening the SB-HATCH doors. When finished, simply return the tile or close the doors and the SkyBox will be hidden from view.

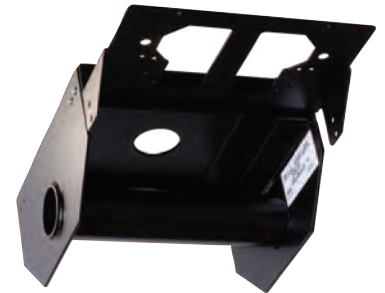
The SkyBox (SB-50) contains an integrated 1.5" pipe which functions as a rigging point for lighting instruments, trusses and speakers. An optionally installed bracket provides mounting for Two 4" Standard 19 series Electrical Boxes to handle your power and control requirements. W.L.L. 1000 LBS.

The SkyBox (SB-200) contains an integrated swivel hoist ring and a 1.5" pipe which functions as a rigging point for lighting fixtures, trusses, line arrays and many other rigging needs. Integrated within the SkyBox are locations for Two 4" Standard 19 series Electrical Boxes to handle multiple locations for your power and control requirements. Tube W.L.L. 1000 LBS, hoist ring W.L.L. 2,300 LBS, combined W.L.L. 2,300 LBS.

The SkyBox Hatch (SB-Hatch) provides bomb-bay door access to any of the SkyBox rigging points. The Hatch provides an architectural pleasing method of access without the need to touch any ceiling tiles.



SB-200



SB-50



SB-Hatch

LITE-IT

The Light with a Brain



LITE-it easily provides lighting in floor, wall, ceiling boxes, equipment racks, or anywhere a work light is needed. LITE-it is included with the larger OWB boxes (OWB-X and OWB-500P) for safe connecting in dimly lit areas. LITE-it can be used with all our Ceiling Solutions. Add LITE-it to every box!



MADE IN THE USA



Specifications are subject to change without notice.



244 Bergen Boulevard · Woodland Park, NJ 07424
800.332.FSR1 · 973.998.2300 · F: 973.785.3318
W: fsrinc.com · E: sales@fsrinc.com

© 2021 FSR, Inc. All Rights Reserved

LIT1413H