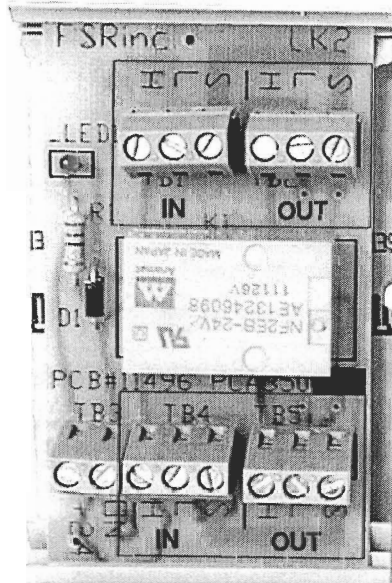


244 Bergen Boulevard, West Paterson, NJ 07424

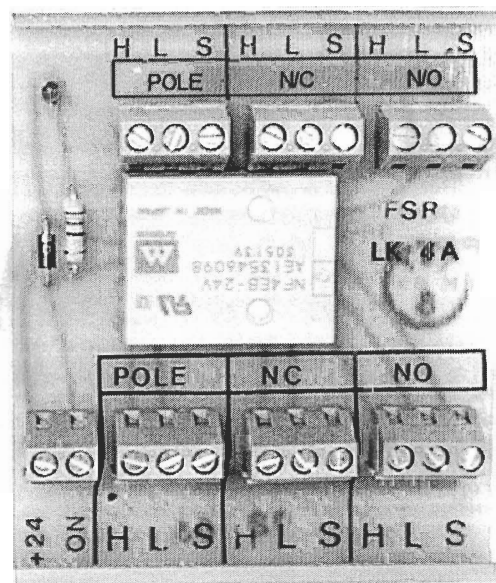
Tel 973-785-4347

Fax 973-785-4207

E-Mail sales@fsrinc.com



**LK-2**



**LK-4**

**Description:**

These relay cards are designed to accept and switch standard, 2 wire and shield, audio lines (Belden 8451 or equivalent).

Both cards feature terminal strips for each of the 3-position audio lines. An LED status indicator and protection diodes to suppress transients are also provided.

**LK-2**

Accepts up to four audio lines and can open or short, and close these lines (see diagram).

**LK-4**

Accepts up to 6 audio lines and switches from A to B to C (see diagram).

**Electrical Specifications:**

Contact Arrangement:

LK-2- 2 Form C bifurcated,  
 LK-4- 4 Form C bifurcated

Contact Rating:

Non inductive load  
 Max 2 Amp @ 30 VDC or 0.5  
 Amp @ 115 VAC

Contact Material:

Fine silver gold clad

Capacitance:

Contact to contact 4pt.  
 (typical)

Contact Resistance:

50 milliohms initially  
 200 milliohms at end of life

Operate Time:

10 ms at nominal coil  
 voltage

Release Time:

4 ms at nominal coil voltage

Contact Bounce (Typical):

2 ms (included in operate  
 and release time)

Max. Operating Speed:

50 Hz

Dielectric Strength (initial):

1000 Vrms: 750 across  
 contact gap

Insulation Resistance:

1000 megohms @ 20°C,  
 500 VDC

Drop Out:

10% or more of nominal coil  
 voltage

**Power:**

**LK-2**

Voltage — 24VDC  
 Current — 30MA

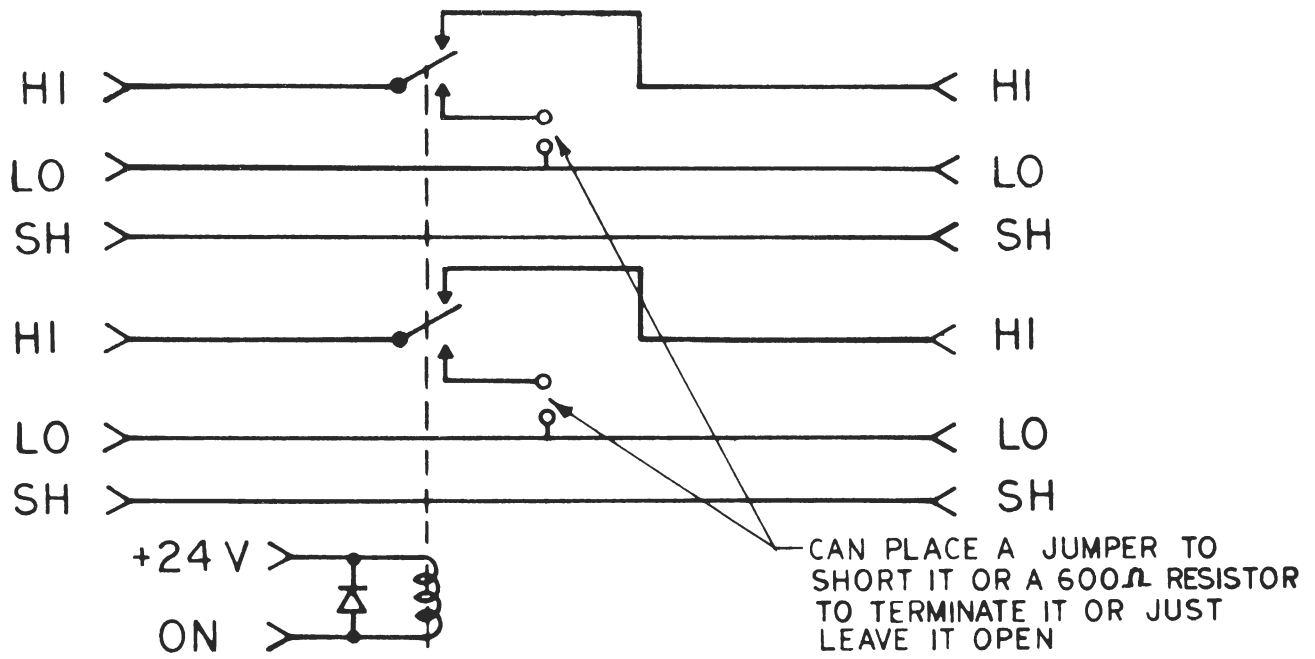
**LK-4**

Voltage — 24VDC  
 Current — 30MA

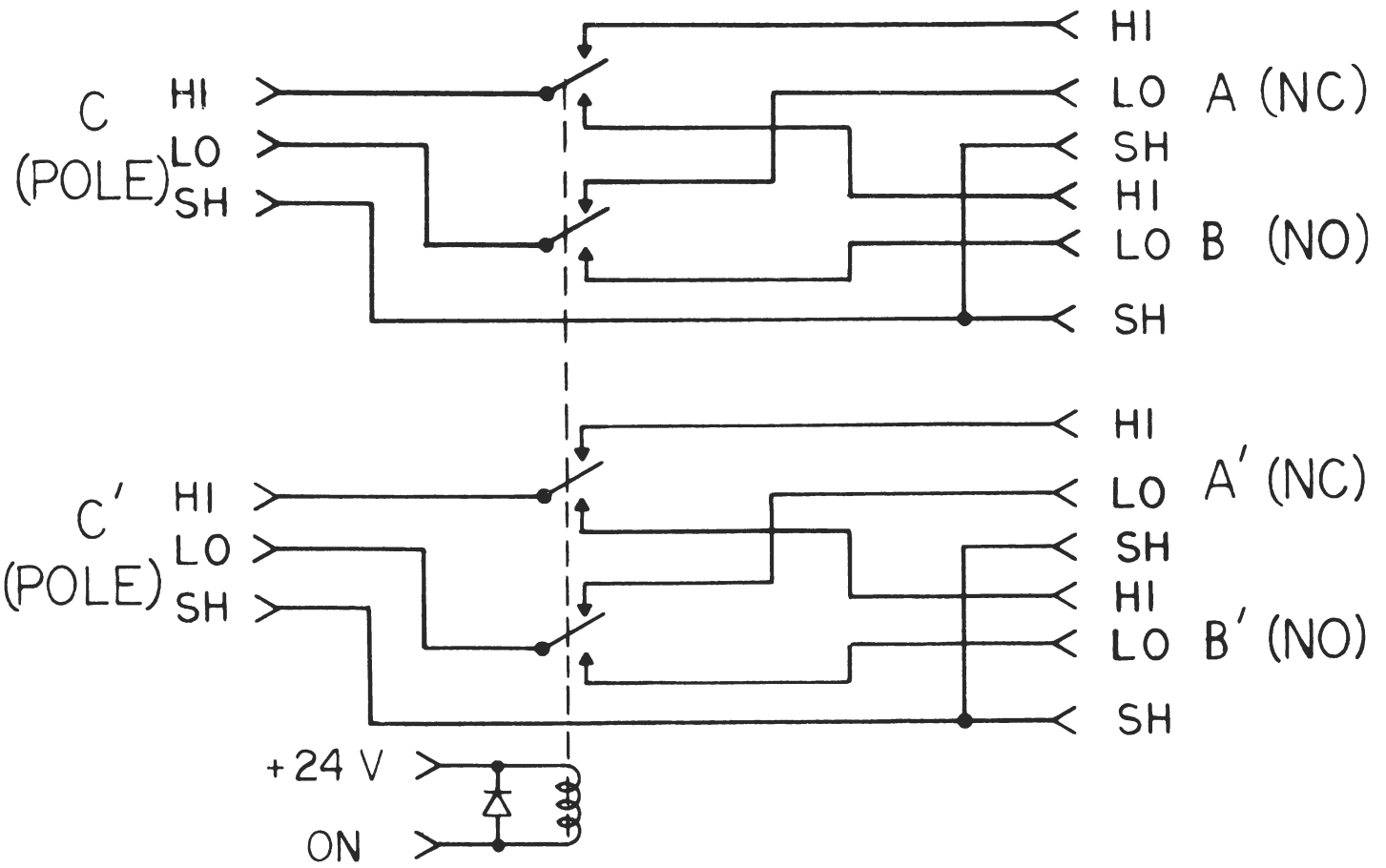
**Size:**

LK-2 2"W, 3¼"D, ¾"H

LK-4 3"W, 3¼"D, ¾"H



SCHMATIC DIAGRAM LK-2



SCHMATIC DIAGRAM LK-4