



*With PWB Wall Box
mounted behind
the display, cable
clutter is gone*



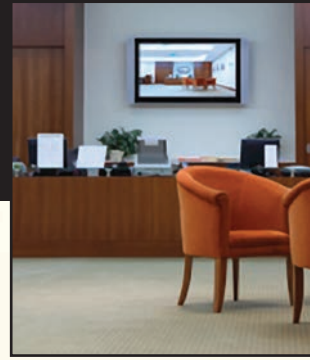
*Without PWB Wall Box
cables are visible
and ugly*

Touchboards

205 Westwood Ave, Long Branch, NJ 07740
Phone: 866-94 BOARDS (26273) / (732)-222-1511
Fax: (732)-222-7088 | E-mail: sales@touchboards.com

Project Wall Boxes

***Behind Every Display Install
a PWB Wall Box***



Whether it's a Boardroom, Huddle Area, Classroom, Lobby, Hotel, C
EVERY Display Needs

Architects, engineers, consultants and integrators want to deliver the best installation to their clients. Don't let dangling wires and cords destroy your clean finish! By simply installing one of our many PWB's behind the flat screen, you handle connections for power, data, cable, and more! Available with white or black finished covers, back boxes and covers are in stock for a quick delivery. They are Made in the USA, and have been creatively engineered and manufactured responsibly!

PWB-100



With Cover

Without Cover

The **PWB-100** installs easily in the wall behind any display allowing your display to sit flush against the wall. This unit provides a neat and secure environment for the audio, video, control and power connections.

The unit accommodates up to six single space IPS plates and a UL listed single gang gem box for AC power.

FSR designed this unit for new and existing construction. Brackets are included for mounting to studs in new construction as well as surface mount clips for mounting to sheet rock or plywood in existing construction.

PWB-200 / PWB-203



The **PWB-200** is approximately 7"x7"x4" with two single gang knockouts, and one IPS knockout to mount up to six single IPS plates. The unit is designed to fit 2"x4" stud walls. The interior of the PWB-200 has all flat sides which lets you add more equipment in a smaller footprint.

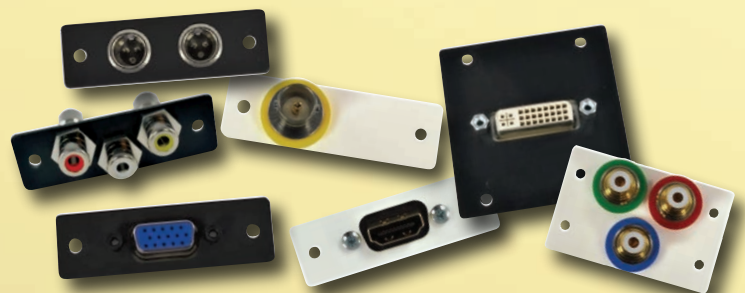
The **PWB-203** 3" deep model is specifically sized for 2x3 stud walls. Supplied with a steel duplex cover plate to ensure proper fit in the shallow back box.

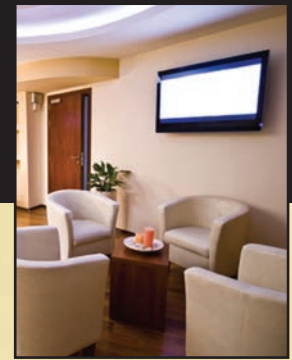
The models in this brochure are shown with IPS plates and accessories that are not included.



ADD IPS (Intelligent Plate Solutions) PLATES

Add IPS to your installation! We now offer "labeled IPS plates" at no additional cost. Custom labeling and logos can also be added for a small charge. In the photos, you will notice examples of IPS plates mounted in the PWB units. The IPS Planner on our web site will help you design your plates simply and efficiently.





Conference Center, Airport, Arena, Reception Area or Family Room...
Needs a PWB Wall Box!

THE LARGER MODELS WITH THE HIGHEST CAPACITY!

These units feature stud-to-stud mounting, a universal single gang punch-out for duplex or low voltage connectivity to be mounted without additional hardware, & pass thru capability.

PWB-250



This unit is approximately 14.25"x7"x4" and has three single gang knockouts and one IPS knockout to mount up to six single IPS plates. In addition, a removable passthru enclosure provides an additional single gang knockout and can be used to isolate cables that the installer may need to pass through the backbox. The PWB-250-2KO is a version with 2" KO's available at the top and bottom of the box for special applications.

PWB-253



Specifically sized for installation in 2"x3" stud walls, the PWB-203 and PWB-253 are 3" deep versions of the PWB-200 and PWB-250 respectively. One steel duplex cover plate (PWB-203/253) and one steel Decora cover plate (PWB-253 only) is included for convenience and to ensure proper fit in the shallow back box.

PWB-353



The PWB-353 Wall Box has an open face design with a white interior and white extended trim ring, including quick access to cables and connectors without cover removal. There are multiple knockouts for power, and openings for up to 6 single IPS connector plates. At 3" deep, it is designed for use in 3" or 4" stud walls. The extended trim ring provides a clean appearance while covering rough cuts in the drywall created during installation.



THE LITE WITH A BRAIN



LITE-it easily provides lighting in floor, wall and ceiling boxes, or anywhere a work light is needed. LITE-it can be used with all of our Core Solutions. Add LITE-it to every box!



Look for this symbol to see where LITE-it can be installed.



FSR MANUFACTURER MOUNTING SOLUTIONS

FSR is now offering several "MMS" (Manufacturer Mounting Solutions) PWB housings. All models have the same basic features and include bracketry for specific manufacturer's components as listed under each model. The PWB series housings are specifically designed to quickly and easily install behind a wall mounted display or a projector. The component and power supply are mounted to a removable bracket which is in turn mounted to the PWB back box. The back box is typically installed flush with the wall's surface.

PWB-270

Plasma/Flat Panel Display Wall Box for Crestron DM-RMC-SCALER-C Receiver



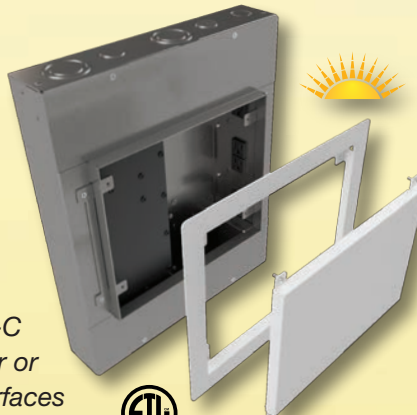
PWB-280

Plasma/Flat Panel Display Wall Box for SVSI N1000, N2000, N3000 PoE powered Encoders



PWB-450**

The standard PWB-450 is the largest of our PWB series. Two mounting brackets are available for mounting the Crestron DM-RMC-4K-SCALER-C receiver/room controller or other digital media interfaces and devices as well as 4 AC outlets and mounting for Decora plates.



PWB-290

Plasma/Flat Panel Display Wall Box for AMX AVB-RX-DXLINK-HDMI Receiver/AVB-TX-MULTI-DXLINK Multi-Format Transmitter /DXLF-HDMIRX Fiber Receiver /DXLF-MFTX Fiber Transmitter and Power Supplies



** Also available in a Fire resistant version PWB-FR-450.



We offer PWB Series boxes that work with the Cisco 4400 Series Media Players. Contact the factory for more details.



244 Bergen Boulevard · Woodland Park, NJ 07424
800.332.FSR1 · 973.785.4347 · F: 973.785.3318
W: fsrinc.com · E: sales@fsrinc.com LIT1442C
© 2013 FSR, Inc. All Rights Reserved

